



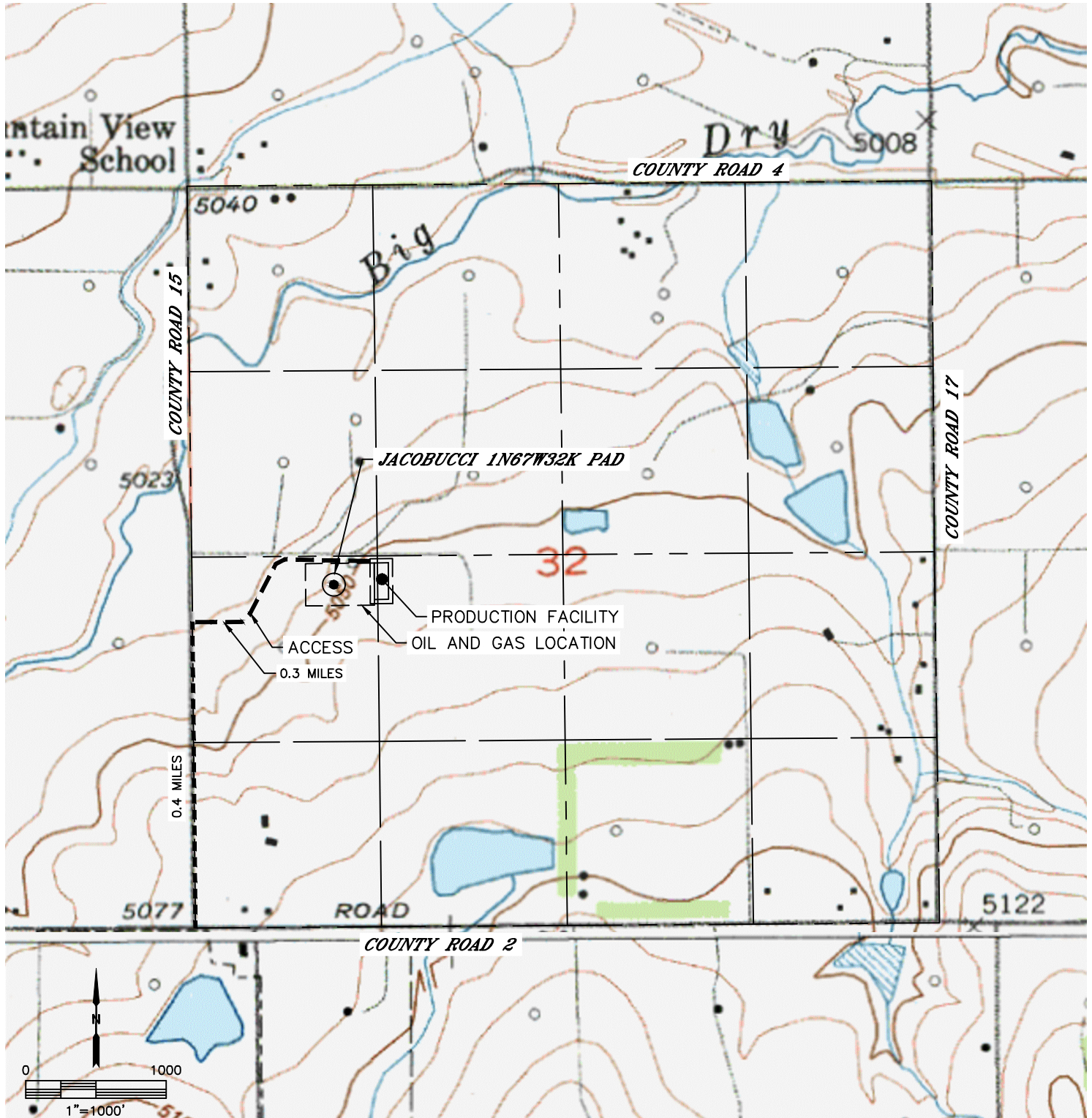
Lat40°, Inc. 6250 W. 10th Street, Unit 2, Greeley, CO 970-515-5294

# ACCESS ROAD MAP

JACOBUCCI 1N67W32K PAD

SECTION: 32  
TOWNSHIP: 1N  
RANGE: 67W  
6TH. P.M.  
WELD COUNTY, CO

DRIVING DIRECTIONS TO JACOBUCCI 1N67W32K PAD  
FROM THE INTERSECTION OF COUNTY ROAD 15 AND COUNTY ROAD 2, DRIVE NORTH ON COUNTY ROAD 15  
FOR 0.4 MILES TO AN ACCESS ROAD TO THE EAST. FOLLOW ACCESS ROAD TO EAST FOR 0.3 MILES TO  
PROPOSED DRILL PAD.





Lat40°, Inc. 6250 W. 10th Street, Unit 2, Greeley, CO 970-515-5294

# ACCESS ROAD MAP

JACOBUCCI 1N67W32K PAD

SECTION: 32  
TOWNSHIP: 1N  
RANGE: 67W  
6TH. P.M.  
WELD COUNTY, CO

