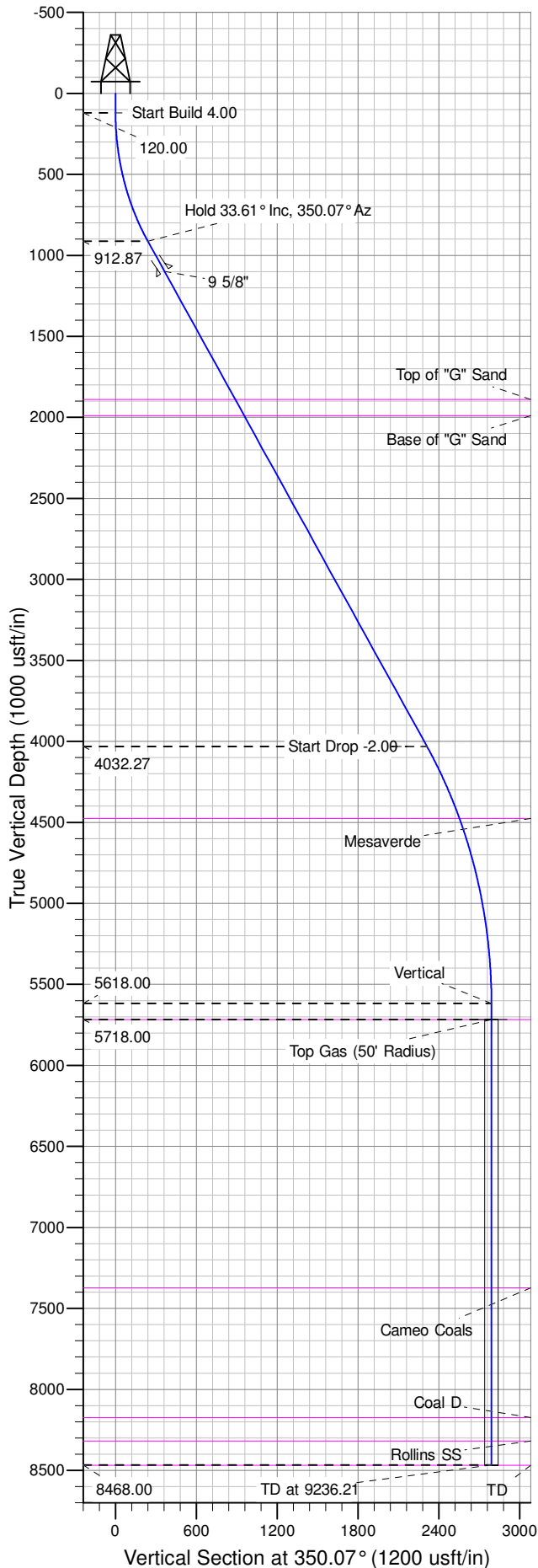
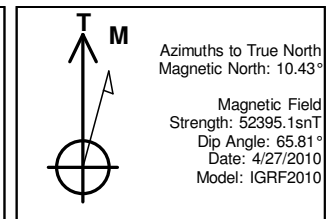
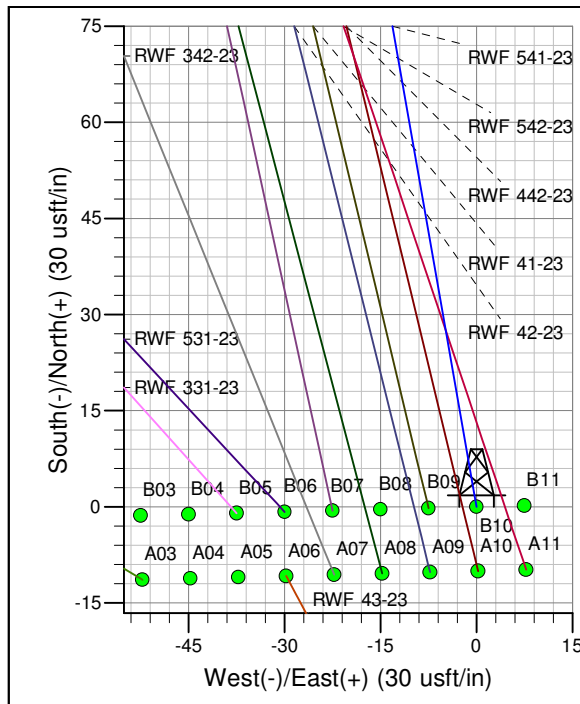
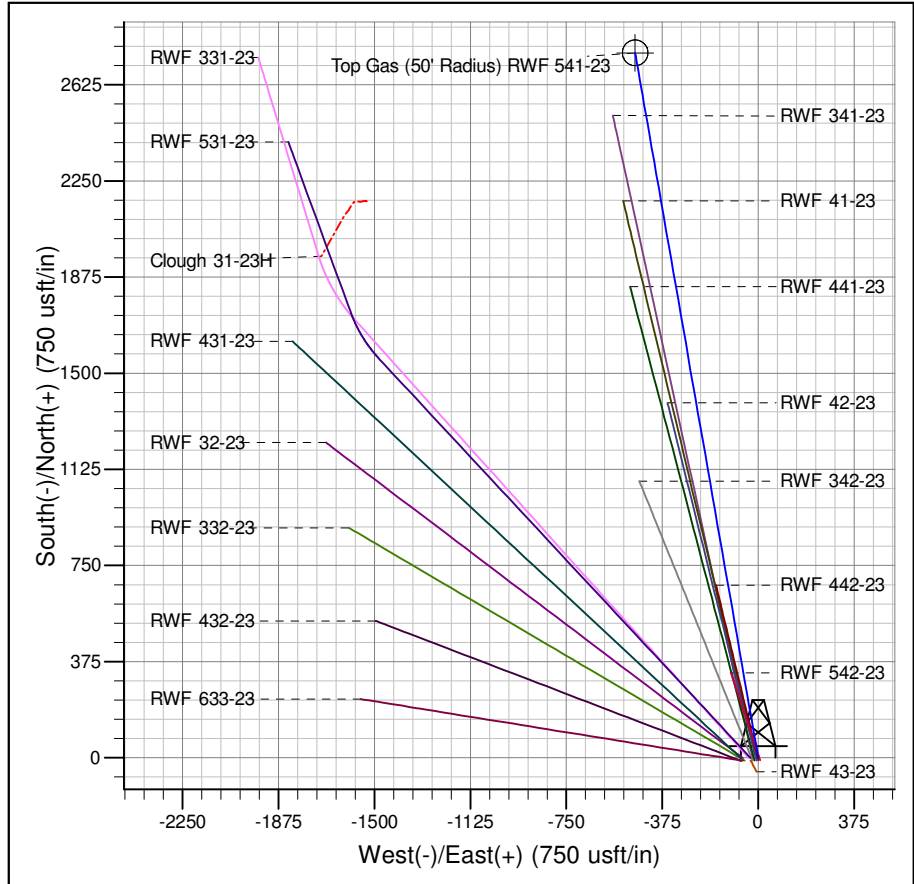




Well Name: RWF 541-23
Surface Location: RWF 43-23 Pad
North American Datum 1983 , US State Plane 1983, Colorado Central Zone
Ground Elevation: 5599.00
+N/-S 0.00 +E/-W 0.00 Northing 1619214.50 Easting 2337911.50 Latitude 39.51004 Longitude -107.84689 Slot B10
KELLY BUSHING @ 5625.00usft (Nabors 576 (26' RKB) mab)



ANNOTATIONS									
TVD	MD	Inc	Azi	+N/-S	+E/-W	Vsect	Departure	Annotation	
120.00	120.00	0.00	0.00	0.00	0.00	0.00	0.00	Start Build	4.00
912.87	960.23	33.61	350.07	235.87	-41.28	239.45	239.45	Hold	33.61° Inc, 350.07° Az
4032.27	4705.76	33.61	350.07	2278.07	-398.65	2312.69	2312.69	Start Drop	-2.00
5618.00	6386.21	0.00	350.07	2749.79	-481.21	2791.58	2791.58	Vertical	
5718.00	6486.21	0.00	0.00	2749.79	-481.21	2791.58	2791.58	Top Gas	
8468.00	9236.21	0.00	0.00	2749.79	-481.21	2791.58	2791.58	TD at	9236.21



Project: RU 23-06S-094W
Site: RWF 43-23 Pad
Well: RWF 541-23
Plan #4 26Mar14 kjs