

# HALLIBURTON

iCem<sup>®</sup> Service

## **CATAMOUNT EXPLORATION LLC**

**For: REED FISHER**

Date: Wednesday, April 27, 2016

## **LAMKE 33-5-29 #1 PRODUCTION**

LAMKE 33-5-29 #1 PRODUCTION

Job Date: Thursday, April 21, 2016

Sincerely,

**JACOB AYERS**

## Legal Notice

---

### Warning Disclaimer

Although the information contained in this report is based on sound engineering practices, the copyright owner(s) does (do) not accept any responsibility whatsoever, in negligence or otherwise, for any loss or damage arising from the possession or use of the report whether in terms of correctness or otherwise. The application, therefore, by the user of this report or any part thereof, is solely at the user's own risk.

### Limitations of Liability

Except as expressly set forth herein, there are no representations or warranties by Halliburton, express or implied, including implied warranties of merchantability and/or fitness for a particular purpose. In no event will Halliburton or its suppliers be liable for consequential, incidental, special, punitive or exemplary damages (including, without limitation, loss of data, profits, use of hardware, or software). Customer accepts full responsibility for any investment made based on results from the Software. Any interpretations, analyses or modeling of any data, including, but not limited to Customer data, and any recommendation or decisions based upon such interpretations, analyses or modeling are opinions based upon inferences from measurements and empirical relationships and assumptions, which inferences and assumptions are not infallible, and with respect to which professional may differ. Accordingly, Halliburton cannot and does not warrant the accuracy, correctness or completeness of any such interpretation, recommendation, modeling or other products of the Software Product. As such, any interpretation, recommendation or modeling resulting from the Software for the purpose of any drilling, well treatment, production or financial decision will be at the sole risk of Customer. Under no circumstances will Halliburton or its suppliers be liable for any damages.

Table of Contents

---

Real-Time Job Summary .....  
    Job Event Log.....  
Attachments.....  
    LAMKE 33-5-29 #1 PRODUCTION-Custom Results.png.....  
Custom Graphs.....  
    Custom Graph.....

## 1.0 Real-Time Job Summary

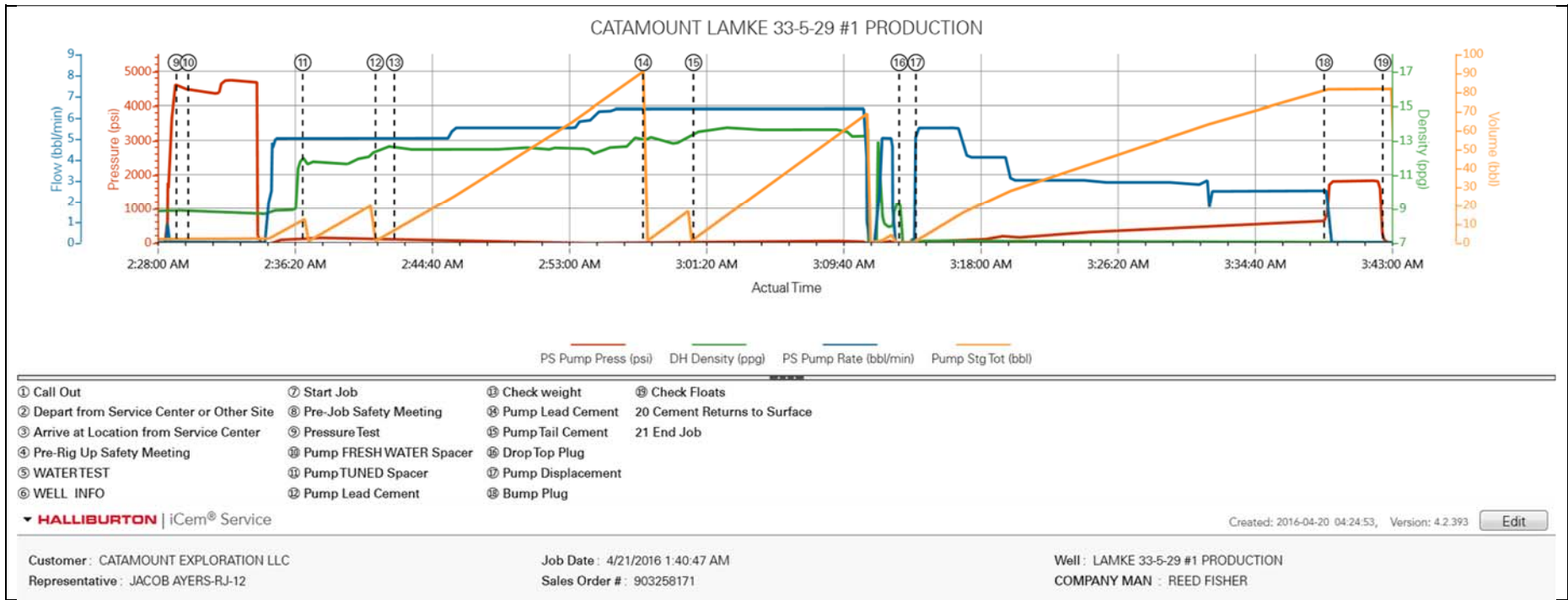
## 1.1 Job Event Log

Type	Seq. No.	Activity	Graph Label	Date	Time	Source	PS Pump Press (psi)	DH Density (ppg)	PS Pump Rate (bbl/min)	Pump Stg Tot (bbl)	Comments
Event	1	Call Out	Call Out	4/20/2016	04:27:28	USER					CALL OUT @ 2045
Event	2	Depart from Service Center or Other Site	Depart from Service Center or Other Site	4/20/2016	04:27:39	USER					LEFT YARD @ 2200
Event	3	Arrive at Location from Service Center	Arrive at Location from Service Center	4/20/2016	04:28:01	USER					ARRIVED ON OCATION @ 2330
Event	4	Pre-Rig Up Safety Meeting	Pre-Rig Up Safety Meeting	4/21/2016	01:00:00	USER					WITH CREW PRIOR TO RIGGING UP
Event	5	Other	WATER TEST	4/21/2016	01:41:15	USER	75.30	0.03	0.00	0.0	CLORIDES >29 SULFATES >200 TEMP 73 PH 6
Event	6	Other	WELL INFO	4/21/2016	01:42:17	USER	76.30	0.03	0.00	0.0	SURFACE 8 5/8 24# @394' OH 7 7/8 PRODICTION 5.5" 17# @3418 SJ= 43.13
Event	7	Start Job	Start Job	4/21/2016	01:52:55	COM5					
Event	8	Pre-Job Safety Meeting	Pre-Job Safety Meeting	4/21/2016	02:00:00	USER	-45.70	8.29	0.00	0.0	WITH ALL AFFECTED PERSONEL ON LOCATION
Event	9	Pressure Test	Pressure Test	4/21/2016	02:29:16	USER	4554.30	8.88	0.00	1.8	TEST LINES TO 4600 PSI
Event	10	Pump Spacer	Pump FRESH WATER Spacer	4/21/2016	02:30:00	USER	4447.30	8.83	0.00	1.8	10 BBL FRESH WATER SPACER
Event	11	Pump Spacer	Pump TUNED Spacer	4/21/2016	02:36:57	USER	134.30	11.57	5.00	12.6	20 BBL TUNED SPACER @ 11.5 #
Event	12	Pump Lead Cement	Pump Lead Cement	4/21/2016	02:41:22	USER	119.30	12.38	5.00	1.5	150 SKS @12.3# 2.42YIELD = 64.8 BBL SLURRY
Event	13	Check Weight	Check weight	4/21/2016	02:42:32	COM5	104.30	12.52	5.00	7.3	
Event	14	Pump Lead Cement	Pump Lead Cement	4/21/2016	02:57:38	USER	1.30	13.04	6.40	0.3	40 SKS @12.3 2.43 YIELD =17.3 BBLSLURRY

Event	15	Pump Tail Cement	Pump Tail Cement	4/21/2016	03:00:42	USER	24.30	13.45	6.40	2.7	185 SKS @13.5 1.87YIELD = 61.6 BBL SLURRY
Event	16	Drop Top Plug	Drop Top Plug	4/21/2016	03:13:12	USER	-87.70	8.28	0.00	0.0	SHUT DOWN WASH PUMPS AND LINES DROP PLUG
Event	17	Pump Displacement	Pump Displacement	4/21/2016	03:14:13	USER	7.30	7.03	5.50	1.2	CALCULATED DISPLACEMENT 78.3 BBL ACTUALY PUMPED MARK TO MARK 279 BBL
Event	18	Bump Plug	Bump Plug	4/21/2016	03:39:01	USER	763.30	7.08	2.50	81.2	CALCULATED PSI TO LAND PLUG 815PSI PLUG ACTUALLY LANDED @ 760 PSI
Event	19	Check Floats	Check Floats	4/21/2016	03:42:35	USER	37.30	7.01	0.00	81.5	FLOATS HELD .5 BBL BACK
Event	20	Cement Returns to Surface	Cement Returns to Surface	4/21/2016	03:45:31	USER	-91.70	6.98	0.00	0.0	Calcuated cmt back to surface 35 bbl ACTUAL CMT BACK 20 BBL TUNED SPACER BACK 0 BBL GOOD CMT BACK
Event	21	End Job	End Job	4/21/2016	03:49:13	COM5					

2.0 Attachments

2.1 LAMKE 33-5-29 #1 PRODUCTION-Custom Results.png



## 3.0 Custom Graphs

### 3.1 Custom Graph

