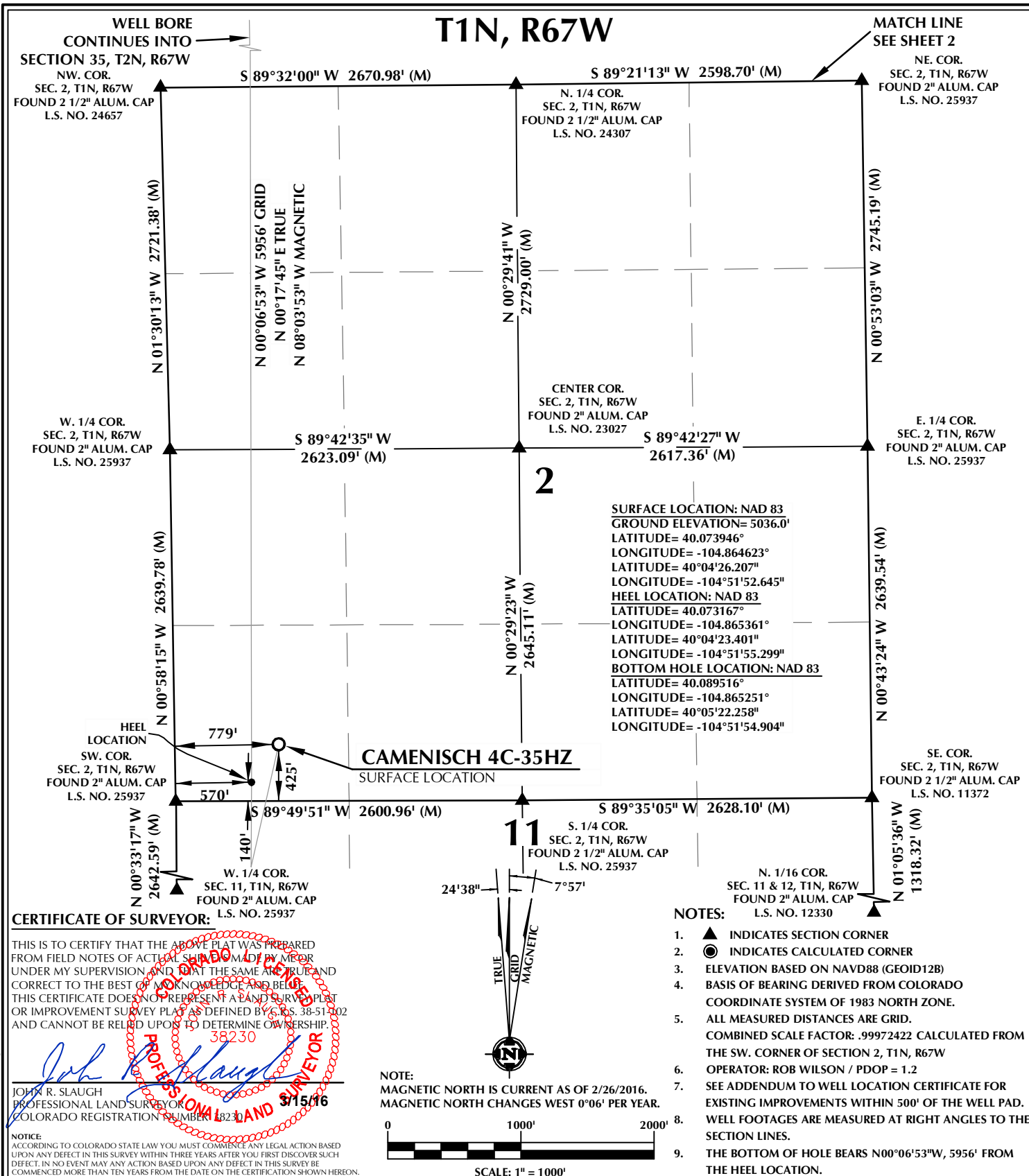


K:\LAND\2015\2015-50 CAMENISCH T1N, R67W, 2 PLATS\CAMENISCH 29C-35HZ PLAT.dwg, 3/18/2016 9:12:25 AM, lba



WELL PAD - CAMENISCH 29C-35HZ

CAMENISCH 4C-35HZ
WELL LOCATION CERTIFICATE
425' FSL & 779' FWL SWSW (SURFACE)
140' FSL & 570' FWL SWSW (HEEL)
LOCATED IN SECTION 2
T1N, R67W, 6TH P.M.
732' FSL & 678' FWL SWSW (BOTTOM)
LOCATED IN SECTION 35
T2N, R67W, 6TH P.M.
WELD COUNTY, COLORADO

**Kerr-McGee Oil &
Gas Onshore L.P.**
1099 18th Street
Denver, Colorado 80202



CONSULTING, LLC

SHERIDAN OFFICE
1095 Saberton Avenue
Sheridan, Wyoming 82801
Phone 307-674-0609

LOVELAND OFFICE
1635 Foxtrail Drive, Suite 204
Loveland, Colorado 80538
Phone 970-776-4331

DRAFTED BY:	SJM	CHECKED BY:	JRS	SHEET NO:
DATE DRAFTED:	3/15/16	DATE SURVEYED:	11/19/15	1
REVISED:		FILE NAME:	15-50	1 OF 2

T2N, R67W

NW. COR.
SEC. 35, T2N, R67W
FOUND 3 1/4" ALUM. CAP
L.S. NO. 13258

NE. COR.
SEC. 35, T2N, R67W
FOUND 3 1/4" ALUM. CAP
L.S. NO. 22098

S 89°51'11" W 5269.88' (M)

N 00°28'21" W 2647.75' (M)

N 00°28'35" W
2638.44' (C)

N 00°27'52" W 2629.17' (M)

W. 1/4 COR.
SEC. 35, T2N, R67W
FOUND 2" ALUM. CAP
L.S. NO. 25937

CENTER COR.
SEC. 35, T2N, R67W
FOUND 2" ALUM. CAP
NUMBER ILLEGIBLE

E. 1/4 COR.
SEC. 35, T2N, R67W
FOUND 2 1/2" ALUM. CAP
L.S. NO. 34980

S 89°39'02" W
2635.09' (M)

S 89°39'06" W
2634.36' (M)

35

N 00°28'42" W 2647.91' (M)

1915'

591'

732'

678'

652'

BOTTOM OF HOLE:
732' FSL & 678' FWL

1983'

N 01°15'24" W
2642.76' (M)

SURFACE LOCATION: NAD 83
GROUND ELEVATION= 5036.0'
LATITUDE= 40.073946°
LONGITUDE= -104.864623°
LATITUDE= 40°04'26.207"
LONGITUDE= -104°51'52.645"
HEEL LOCATION: NAD 83
LATITUDE= 40.073167°
LONGITUDE= -104.865361°
LATITUDE= 40°04'23.401"
LONGITUDE= -104°51'55.299"
BOTTOM HOLE LOCATION: NAD 83
LATITUDE= 40.089516°
LONGITUDE= -104.865251°
LATITUDE= 40°05'22.258"
LONGITUDE= -104°51'54.904"

SW. COR.
SEC. 35, T2N, R67W
FOUND 2 1/2" ALUM. CAP
L.S. NO. 24657

S 89°32'00" W 2670.98' (M)

S. 1/4 COR.
SEC. 35, T2N, R67W
FOUND 2 1/2" ALUM. CAP
L.S. NO. 24307

S 89°21'13" W 2598.70' (M)

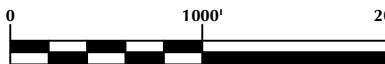
SE. COR.
SEC. 35, T2N, R67W
FOUND 2" ALUM. CAP
L.S. NO. 25937

MATCH LINE
SEE SHEET 1

24'38" 7°57'



NOTE:
MAGNETIC NORTH IS CURRENT AS OF 2/26/2016.
MAGNETIC NORTH CHANGES WEST 0°06' PER YEAR.



SCALE: 1" = 1000'

CERTIFICATE OF SURVEYOR:

THIS IS TO CERTIFY THAT THE ABOVE PLAT WAS PREPARED FROM FIELD NOTES OF ACTUAL SURVEY MADE BY ME OR UNDER MY SUPERVISION AND THAT THE SAME ARE TRUE AND CORRECT TO THE BEST OF MY KNOWLEDGE AND BELIEF. THIS CERTIFICATE DOES NOT REPRESENT A LAND SURVEY PLAT OR IMPROVEMENT SURVEY PLAT AS DEFINED BY C.R.S. 38-51-302 AND CANNOT BE RELIED UPON TO DETERMINE OWNERSHIP.

John R. Slaugh
JOHN R. SLAUGH
PROFESSIONAL LAND SURVEYOR
COLORADO REGISTRATION NUMBER 18230

NOTICE:
ACCORDING TO COLORADO STATE LAW YOU MUST COMMENCE ANY LEGAL ACTION BASED UPON ANY DEFECT IN THIS SURVEY WITHIN THREE YEARS AFTER YOU FIRST DISCOVER SUCH DEFECT. IN NO EVENT MAY ANY ACTION BASED UPON ANY DEFECT IN THIS SURVEY BE COMMENCED MORE THAN TEN YEARS FROM THE DATE ON THE CERTIFICATION SHOWN HEREON.

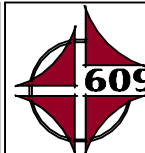
NOTES:

1. ▲ INDICATES SECTION CORNER
2. ● INDICATES CALCULATED CORNER
3. ELEVATION BASED ON NAVD88 (GEOID12B)
4. BASIS OF BEARING DERIVED FROM COLORADO COORDINATE SYSTEM OF 1983 NORTH ZONE.
5. ALL MEASURED DISTANCES ARE GRID.
COMBINED SCALE FACTOR: .99972422 CALCULATED FROM THE SW. CORNER OF SECTION 2, T1N, R67W
6. OPERATOR: ROB WILSON / PDOP = 1.2
7. SEE ADDENDUM TO WELL LOCATION CERTIFICATE FOR EXISTING IMPROVEMENTS WITHIN 500' OF THE WELL PAD.
8. WELL FOOTAGES ARE MEASURED AT RIGHT ANGLES TO THE SECTION LINES.
9. THE BOTTOM OF HOLE BEARS N00°06'53"W, 5956' FROM THE HEEL LOCATION.

WELL PAD - CAMENISCH 29C-35HZ

CAMENISCH 4C-35HZ
WELL LOCATION CERTIFICATE
425' FSL & 779' FWL SWSW (SURFACE)
140' FSL & 570' FWL SWSW (HEEL)
LOCATED IN SECTION 2
T1N, R67W, 6TH P.M.
732' FSL & 678' FWL SWSW (BOTTOM)
LOCATED IN SECTION 35
T2N, R67W, 6TH P.M.
WELD COUNTY, COLORADO

**Kerr-McGee Oil &
Gas Onshore L.P.**
1099 18th Street
Denver, Colorado 80202



CONSULTING, LLC

SHERIDAN OFFICE
1095 Saberton Avenue
Sheridan, Wyoming 82801
Phone 307-674-0609

LOVELAND OFFICE
1635 Foxtrail Drive, Suite 204
Loveland, Colorado 80538
Phone 970-776-4331

DRAFTED BY:	SJM	CHECKED BY:	JRS	SHEET NO:
DATE DRAFTED:	3/15/16	DATE SURVEYED:	11/19/15	2
REVISED:		FILE NAME:	15-50	2 OF 2