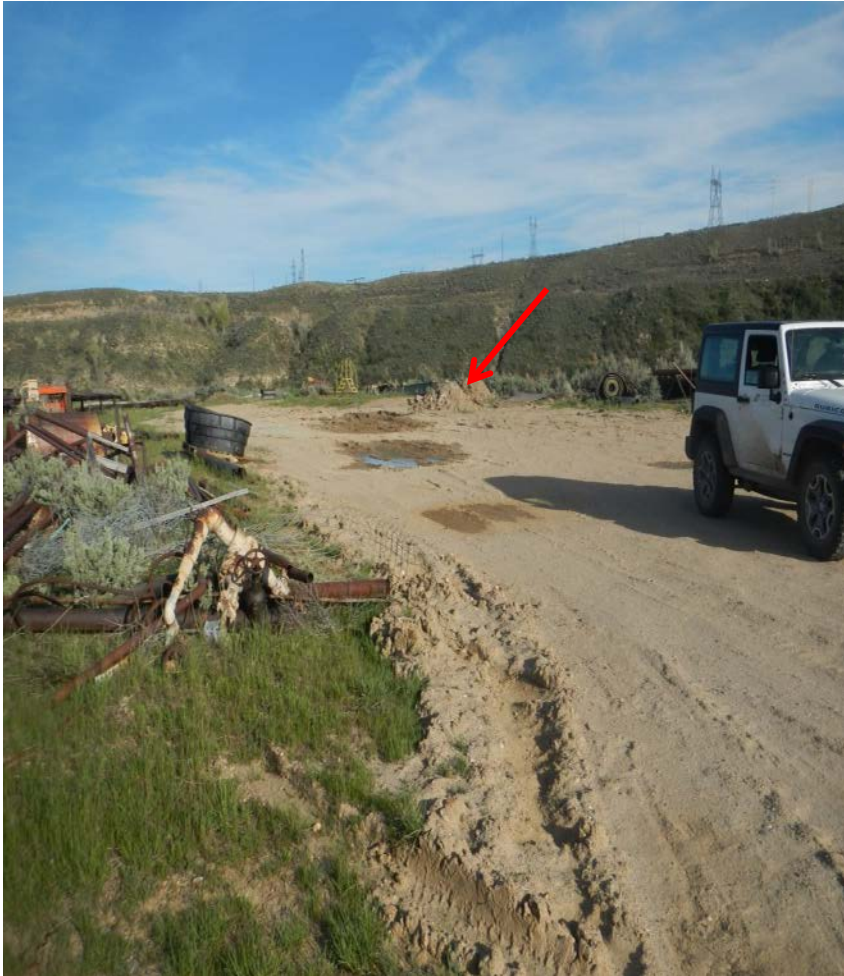


Photo#1:

View SE over Location.

Arrow marks site of plugging Procedures



Photo#2:

View NW over Location .





Photo#3:  
View from SE Corner.



Photo#4:  
View to NE from Location





Photo#5:



Photo#6:

Location receives run -off water from Gravel Pits /Irrigation.



May 13, 2016

Inspection Photos: Vaughn Orphan API#081-05332

Photo#7:

Stored O&G Equipment surrounds Location.



Photo#8:





## Well Condition 5/13/2016



May 13, 2016

Inspection Photos: Vaughn Orphan API#081-05332