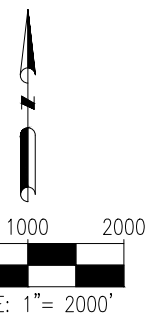
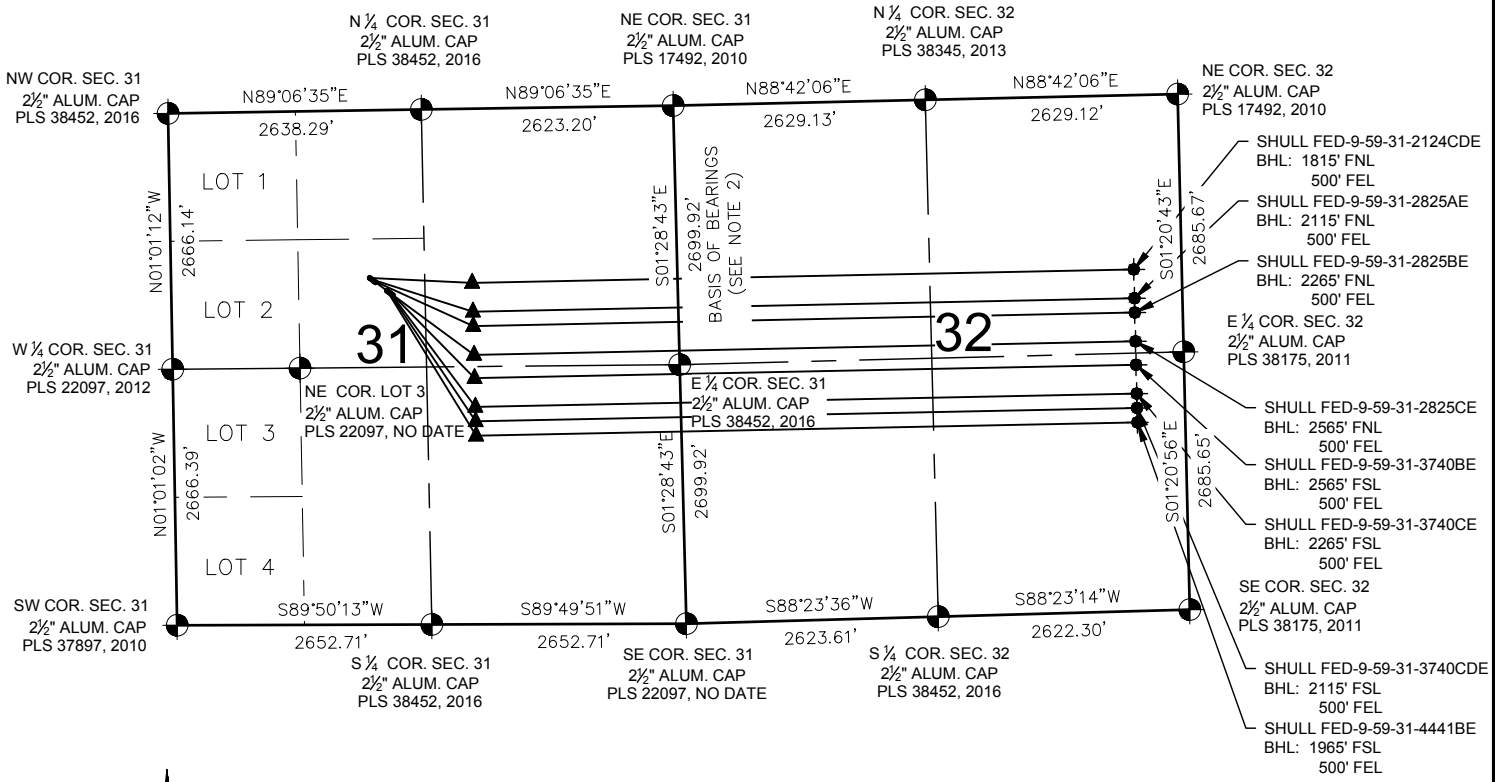


# SHULL PAD 9-59-31-SENW MULTI-WELL PLAN



- LEGEND**
- = EXISTING MONUMENT
  - = CALCULATED POSITION
  - = PROPOSED WELL
  - ◆ = EXISTING WELL
  - ⬤ = BOTTOM HOLE
  - ▲ = LANDING POINT
  - LP = LANDING POINT
  - BHL = BOTTOM HOLE LOCATION

- NOTES:**
1. THIS FIELD SURVEY CONFORMS TO THE MINIMUM STANDARDS SET BY THE C.O.G.C.C., RULE NO. 215
  2. BEARINGS ARE BASED ON THE ASSUMPTION THAT THE EAST LINE OF THE NORTHEAST QUARTER OF SECTION 31, BEARS S01°28'43"E BETWEEN THE MONUMENTS SHOWN HEREON.
  3. GRID DISTANCES ARE SHOWN, AS GPS MEASURED IN THE FIELD, WITH TIES TO WELLS MEASURED PERPENDICULAR TO SECTION LINES. TO GET GROUND DISTANCES MULTIPLY THE SHOWN DISTANCE BY 1.000240741.
  4. FIELD VERIFICATION OF MONUMENTS COMPLETED WITHIN 1 YEAR OF SIGNATURE DATE.

- NOTES:**
- SHULL FED-9-59-31-2124CDE TO BE AT 1746' FNL & 2070' FWL. BOTTOM HOLE AT 1815' FNL & 500' FEL.
  - SHULL FED-9-59-31-2825AE TO BE AT 1761' FNL & 2089' FWL. BOTTOM HOLE AT 2115' FNL & 500' FEL.
  - SHULL FED-9-59-31-2825BE TO BE AT 1776' FNL & 2109' FWL. BOTTOM HOLE AT 2265' FNL & 500' FEL.
  - SHULL FED-9-59-31-2825CE TO BE AT 1792' FNL & 2129' FWL. BOTTOM HOLE AT 2565' FNL & 500' FEL.
  - SHULL FED-9-59-31-4441BE TO BE AT 1883' FNL & 2248' FWL. BOTTOM HOLE AT 1965' FSL & 500' FEL.
  - SHULL FED-9-59-31-3740CDE TO BE AT 1898' FNL & 2267' FWL. BOTTOM HOLE AT 2115' FSL & 500' FEL.
  - SHULL FED-9-59-31-3740CE TO BE AT 1914' FNL & 2287' FWL. BOTTOM HOLE AT 2265' FSL & 500' FEL.
  - SHULL FED-9-59-31-3740BE TO BE AT 1929' FNL & 2307' FWL. BOTTOM HOLE AT 2565' FSL & 500' FEL.

PREPARED BY:  Petroleum Field Services, LLC 7535 Hilltop Circle Denver, CO 80221	FIELD DATE: 02-24-16	SITE NAME: SHULL PAD 9-59-31-SENW	PREPARED FOR:  Crescent Point ENERGY CORP	
	DRAWING DATE: 04-20-16	SURFACE LOCATION: SE 1/4 NW 1/4 SEC. 31, T9N, R59W, 6TH P.M. WELD COUNTY, COLORADO		
	BY: TJN	CHECKED BY: KAD		