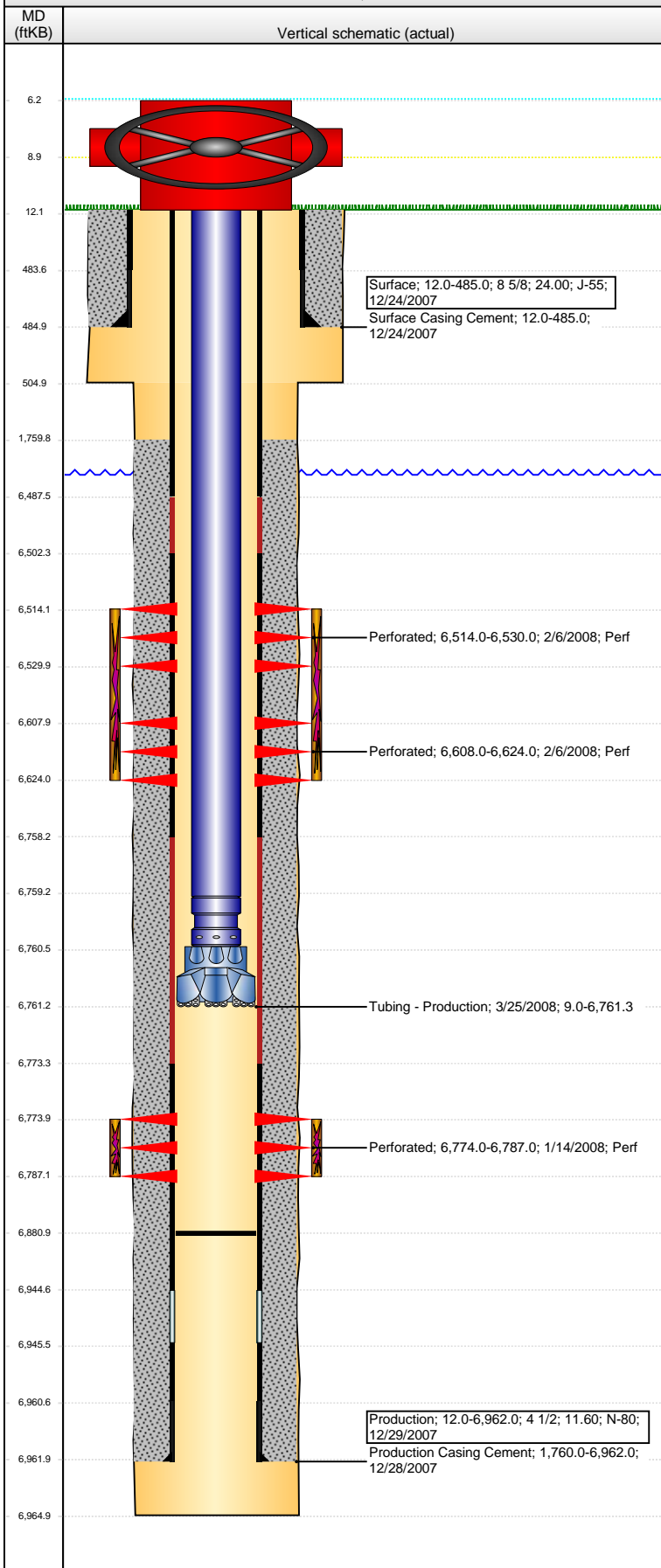


Well Name: LOLOFF B26-33

VERTICAL - ORIGINAL HOLE, 5/26/2016 9:50:26 AM

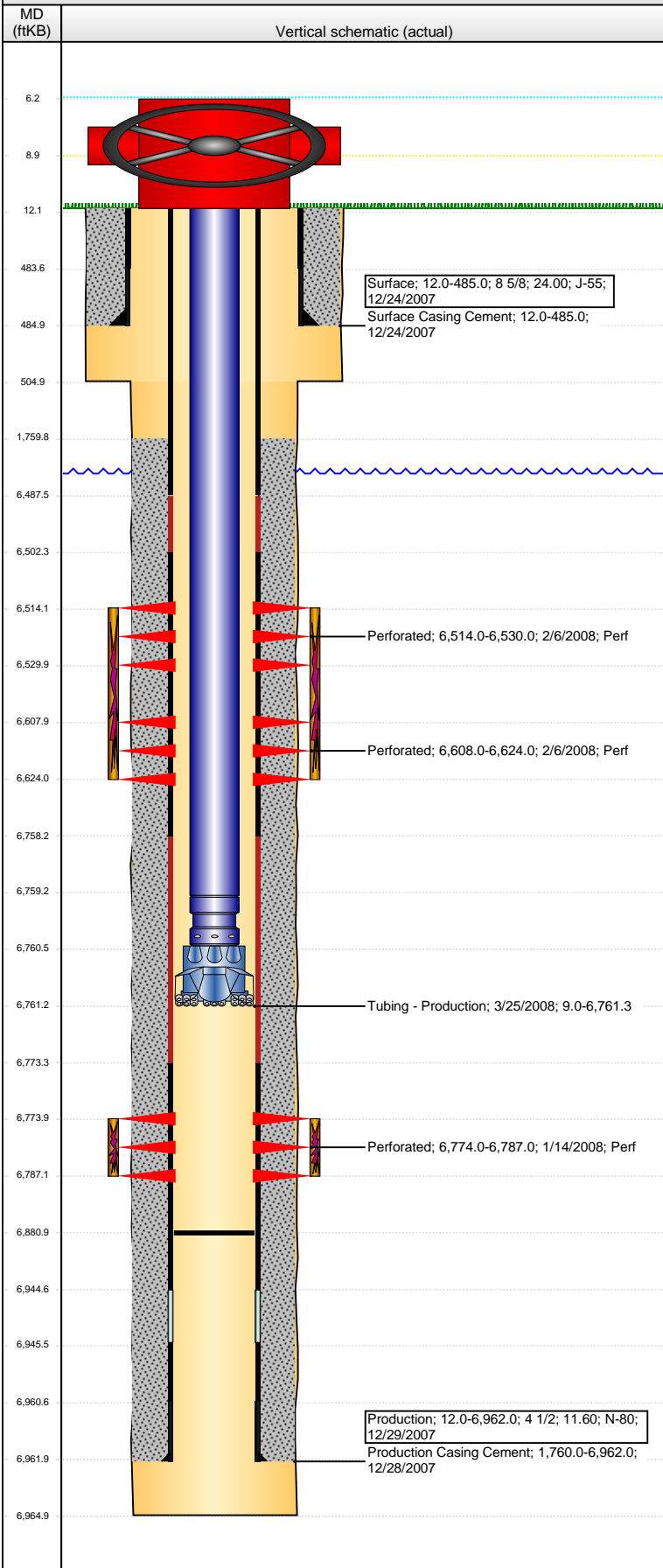


Well Header			
API	Business Unit	District	Well Config
05-123-26070	DJ BASIN	15	VERTICAL
Original KB Elevation (ft)	KB - GL / MSL (ftKB)	Spud Date	P & A Date
4,644	12.00	12/23/2007	
Comment			
Directions To Well			
WCR 52 & WCR 57, 3/10ths North, East into location.			
Congressional Location			
Quarter 1	Quarter 2	Quarter 3	Quarter 4
		SW	SW
Section	Township	Twnshp N...	Range
26	5 N		64
Rng E/W Dir			
W			
Bottom Hole Location			
North-South Distance (ft)	From N or S Line	East-West Distance (ft)	From E or W Line
Plug Back Total Depths			
Date	Depth (ftKB)	Method	Com
3/25/2008	6,881.0	TAG	
Wellbore Sections			
Section Des	Size (in)	Act Top, MD (ftKB)	Act Btm, MD (ftKB)
SURFACE	12 1/4	12	505
PRODUCTION	7 7/8	505	6,965
Zone Statuses			
Zone Name	Status Date	Status	Fluid Type
CODELL	2/19/2008	PR	
NIOBRARA	2/19/2008	PR	
Job	Prod Method		
DRILLING/CO...			
DRILLING/CO...			
Casing Strings			
Surface, 485.0ftKB			
Casing Description	Run Date	OD (in)	Wt/Len (l...)
Surface	12/24/2007	8 5/8	24.00
Grade	Top, MD (ft...)	MD (ftKB)	
J-55	12.0	485.0	
Production, 6,962.0ftKB			
Casing Description	Run Date	OD (in)	Wt/Len (l...)
Production	12/29/2007	4 1/2	11.60
Grade	Top, MD (ft...)	MD (ftKB)	
N-80	12.0	6,962.0	
Cement			
Description	Top Depth (ftKB)	Bottom Depth (ftKB)	
Surface Casing Cement	12.0	485.0	
Description	Top Depth (ftKB)	Bottom Depth (ftKB)	
Production Casing Cement	1,760.0	6,962.0	
Tubing Strings			
Tubing Description	Run Date	String...	ID (in)
Tubing - Production	3/25/2008	2 3/8	1.995
Wt (lb/ft)	Grade	Len (ft)	Set De...
4.70	J-55	6,752.25	25
Tubing Components			
Item Des	OD (in)	Wt (lb/ft)	Grade
Tubing	2 3/8	4.70	J-55
Jts	Len (ft)	Btm (ftKB)	Btm (TVD) (ftKB)
217	6,750.25	6,759.3	
Pump Seating Nipple	2 3/8	1.20	6,760.5
Blade Bit	3 7/8	0.80	6,761.3
Perforation Data			
Zone	Bnch/St g	Entered Shot Total	Top (ftKB)
NIOBRARA, ORIGINAL HOLE	A	64	6,514.00
Btm (ftKB)	Date		
6,530.00	2/6/2008		
NIOBRARA, ORIGINAL HOLE	B	64	6,608.00
6,624.00	2/6/2008		
CODELL, ORIGINAL HOLE		52	6,774.00
6,787.00	1/14/2008		
Stimulations & Treatments			
Date	Zone	Primary Job Type	
2/6/2008	CODELL, ORIGINAL HOLE	DRILLING/COMPLETION - ORIGINAL	
Technical Result	Tech Result Details		Tech Result Note
Success	According to Plan		
Comment			
CODELL FRAC: 11 PERFS OPEN 385# NWB & 307# PERF FRICTION. A DRIVE LINE BROKE ON A PUMP DURING 1#. AN EQUIPMENT OPERATOR'S HARD HAT FELL OFF AND INTO THE FAN BLADE CAUSING THE FAN BLADE TO BREAK DURING 3# SAND. THE BA AND VICON WERE ERRATIC.			
Date	Zone	Primary Job Type	
2/6/2008	NIOBRARA, ORIGINAL HOLE	DRILLING/COMPLETION - ORIGINAL	
Technical Result	Tech Result Details		Tech Result Note
Success	According to Plan		
Comment			
NIOBRARA FRAC WENT WELL. AVG NOLTE = -0.01.			

Well Name: LOLOFF B26-33

VERTICAL - ORIGINAL HOLE, 5/26/2016 9:50:28 AM

Other In Hole



Run Date	Des	OD (in)	Top (ftKB)	Btm (ftKB)
12/28/2007	Caliper/Comp.Density/Neutron/GR/SP/ML		2,500.0	6,945.0
12/28/2007	DIL/GR/SP/Caliper		485.0	6,965.0
1/9/2008	CBL/CCL/GR		1,620.0	6,916.0
11/18/2014	GYRO		10.0	6,700.0

Logs				
Date	Type	Top, MD (ftKB)	Btm, MD (ftKB)	
12/28/2007	Caliper/Comp.Density/Neutron/GR/SP/ML	2,500.0	6,945.0	
12/28/2007	DIL/GR/SP/Caliper	485.0	6,965.0	
1/9/2008	CBL/CCL/GR	1,620.0	6,916.0	
11/18/2014	GYRO	10.0	6,700.0	