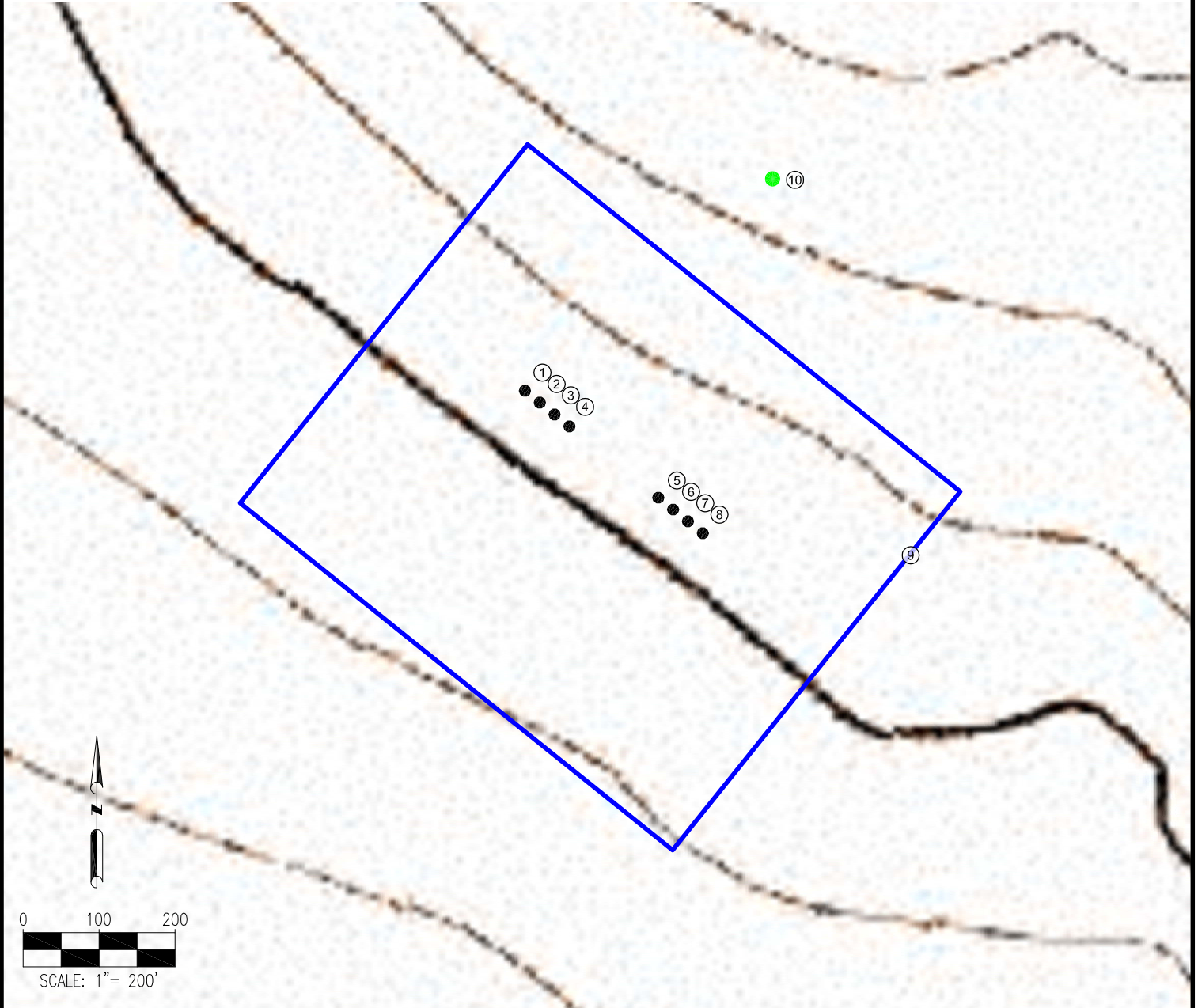


# SHULL PAD 9-59-31-NENW REFERENCE AREA MAP



- 1. SHULL FED-9-59-31-0508BE
- 2. SHULL FED-9-59-31-1209CE
- 3. SHULL FED-9-59-31-1209BE
- 4. SHULL FED-9-59-31-2124CE
- 5. SHULL FED-9-59-31-0508CDE
- 6. SHULL FED-9-59-31-1209AE

- 7. SHULL FED-9-59-31-2124CE2
- 8. SHULL FED-9-59-31-2124BE
- 9. DISTURBANCE AREA
- 10. REFERENCE PHOTO POINT

**REFERENCE LOCATION**

REFERENCE PHOTO POINT  
 LAT: 40.712260°  
 LONG: -104.021601°  
 ELEVATION: 4927'

**LEGEND:**

- = PROPOSED WELL
- = REFERENCE PHOTO POINT
- = DISTURBANCE AREA

**NOTES:**

1. THIS ILLUSTRATION DOES NOT REPRESENT A MONUMENTED LAND SURVEY AND THEREFORE CANNOT BE RELIED UPON TO DETERMINE OWNERSHIP.
2. THIS ILLUSTRATION IS INTENDED FOR REFERENCE USE ONLY AND SHOULD NOT BE USED TO ESTABLISH, TRANSFER, OR DISPUTE BOUNDARIES.
3. PARCEL LINES DEPICTED HEREON MAY NOT HAVE BEEN FIELD VERIFIED AND MAY BE BASED UPON PUBLICLY AVAILABLE DATA.

**DATA SOURCE:**

TOPO MAP: USGS  
  
 PUBLICLY AVAILABLE DATA SOURCES HAVE NOT BEEN INDEPENDENTLY VERIFIED BY PFS.

PREPARED BY:



FIELD DATE:  
02-24-16

DRAWING DATE:  
04-21-16

BY:  
KAD

CHECKED BY:  
MLP

SITE NAME:

SHULL PAD 9-59-31-NENW

SURFACE LOCATION:

NE 1/4 NW 1/4 SEC. 31, T9N, R59W, 6TH P.M.  
 WELD COUNTY, COLORADO

PREPARED FOR:

