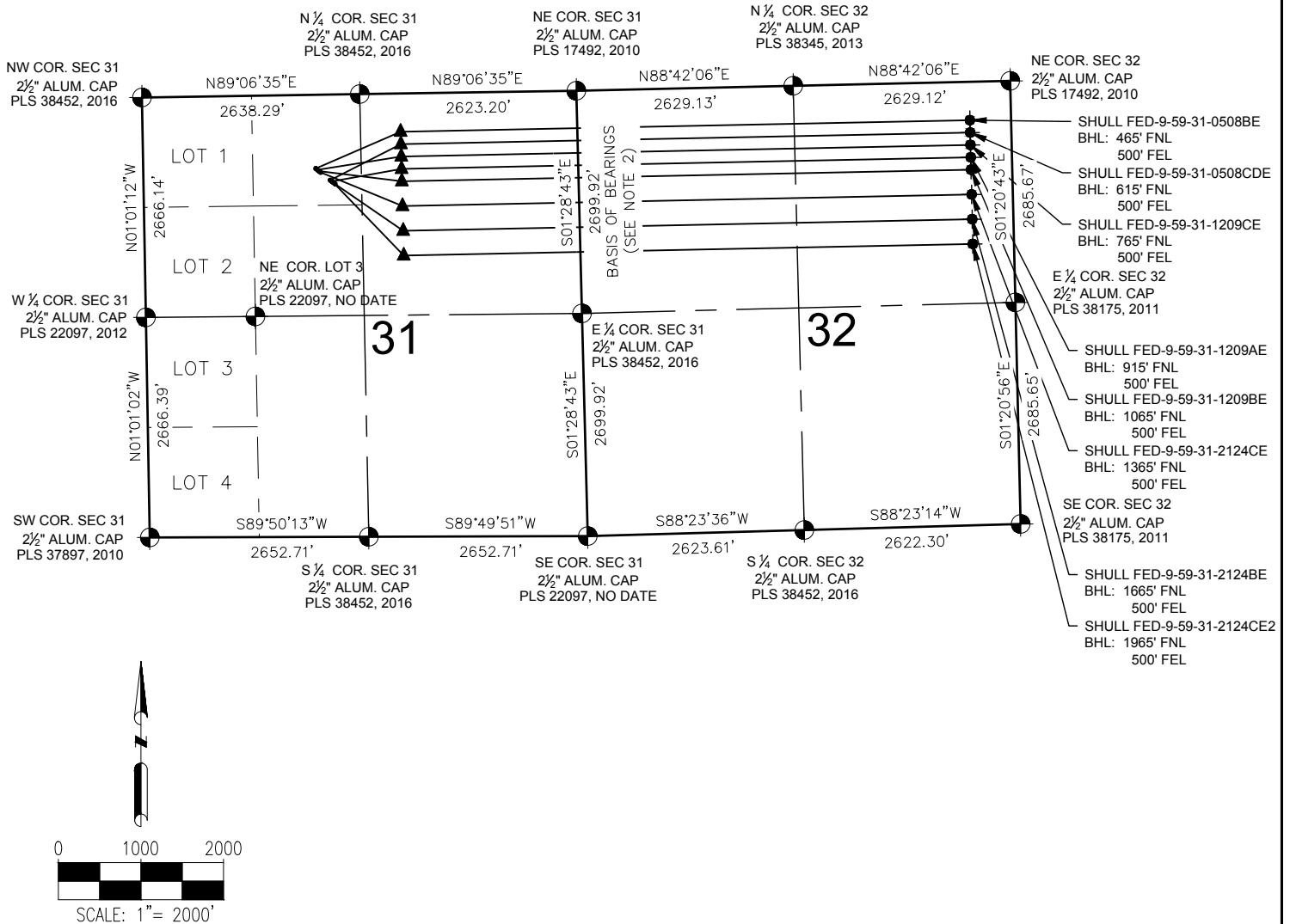


SHULL PAD 9-59-31-NENW MULTI-WELL PLAN



LEGEND

- = EXISTING MONUMENT
- = CALCULATED POSITION
- = PROPOSED WELL
- ◆ = EXISTING WELL
- = BOTTOM HOLE
- ▲ = LANDING POINT
- LP = LANDING POINT
- BHL = BOTTOM HOLE LOCATION

NOTES:

- THIS FIELD SURVEY CONFORMS TO THE MINIMUM STANDARDS SET BY THE C.O.G.C.C., RULE NO. 215
- BEARINGS ARE BASED ON THE ASSUMPTION THAT THE EAST LINE OF THE NORTHEAST QUARTER OF SECTION 31, BEARS S01°28'43"E BETWEEN THE MONUMENTS SHOWN HEREON.
- GRID DISTANCES ARE SHOWN, AS GPS MEASURED IN THE FIELD, WITH TIES TO WELLS MEASURED PERPENDICULAR TO SECTION LINES. TO GET GROUND DISTANCES MULTIPLY THE SHOWN DISTANCE BY 1.000240741.
- FIELD VERIFICATION OF MONUMENTS COMPLETED WITHIN 1 YEAR OF SIGNATURE DATE.

NOTES:

- SHULL FED-9-59-31-0508BE TO BE AT 894' FNL & 2090' FWL. BOTTOM HOLE AT 465' FNL & 500' FEL.
- SHULL FED-9-59-31-1209CE TO BE AT 910' FNL & 2109' FWL. BOTTOM HOLE AT 765' FNL & 500' FEL.
- SHULL FED-9-59-31-1209BE TO BE AT 926' FNL & 2128' FWL. BOTTOM HOLE AT 1065' FNL & 500' FEL.
- SHULL FED-9-59-31-2124CE TO BE AT 942' FNL & 2148' FWL. BOTTOM HOLE AT 1365' FNL & 500' FEL.
- SHULL FED-9-59-31-0508CDE TO BE AT 1037' FNL & 2263' FWL. BOTTOM HOLE AT 615' FNL & 500' FEL.
- SHULL FED-9-59-31-1209AE TO BE AT 1053' FNL & 2282' FWL. BOTTOM HOLE AT 915' FNL & 500' FEL.
- SHULL FED-9-59-31-2124CE2 TO BE AT 1069' FNL & 2301' FWL. BOTTOM HOLE AT 1965' FNL & 500' FEL.
- SHULL FED-9-59-31-2124BE TO BE AT 1085' FNL & 2321' FWL. BOTTOM HOLE AT 1665' FNL & 500' FEL.

PREPARED BY:



FIELD DATE:

02-24-16

DRAWING DATE:

04-20-16

BY:

TJN

CHECKED BY:

KAD

SITE NAME:

SHULL PAD 9-59-31-NENW

SURFACE LOCATION:

NE 1/4 NW 1/4 SEC. 31, T9N, R59W, 6TH P.M.
WELD COUNTY, COLORADO

PREPARED FOR:

