

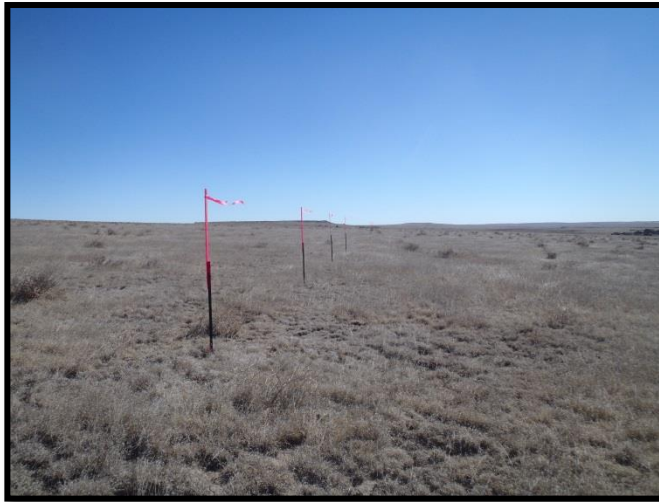
# LOCATION PHOTOS



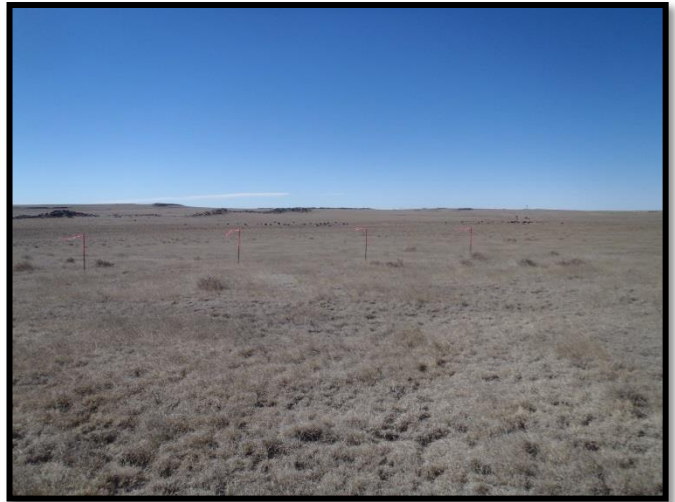
**Looking North**



**Looking East**



**Looking South**



**Looking West**

**Well Pad Name:** SHULL PAD 9-59-31-NENW

**Operator:** CRESCENT POINT ENERGY

**Location:** T9N R59W S31 NENW

**Date Taken:** 02/24/16



Crescent Point  
ENERGY CORP

7535 Hilltop Circle  
Denver, CO 80221  
(303) 928-7128  
[www.petro-fs.com](http://www.petro-fs.com)

