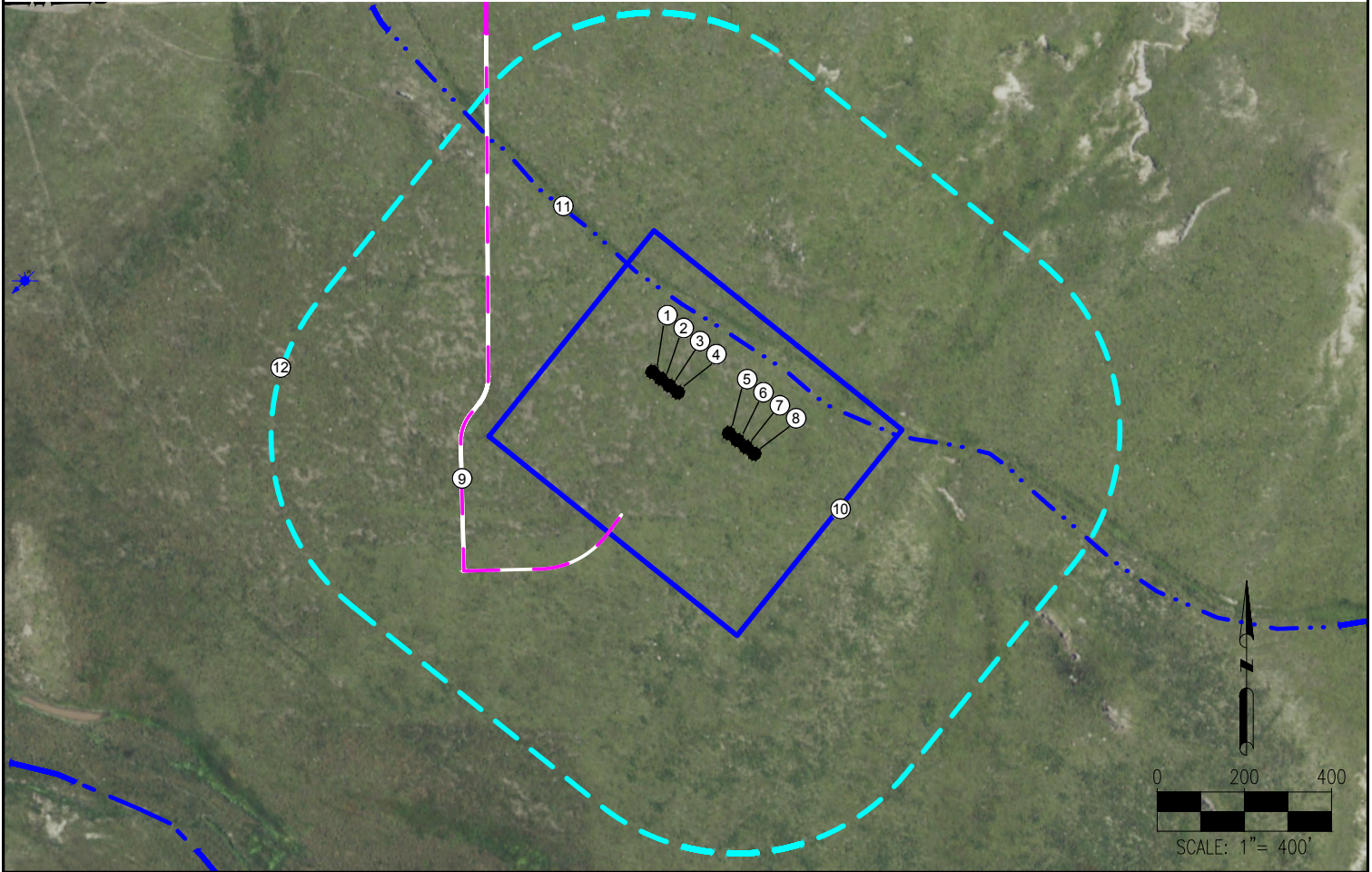


SHULL PAD 9-59-31-NENW LOCATION DRAWING



- | | |
|------------------------------|-----------------------------------|
| 1. SHULL FED-9-59-31-0508BE | 11. DITCH (ABANDONED) IS ±177' NE |
| 2. SHULL FED-9-59-31-1209CE | 12. 500' RADIUS |
| 3. SHULL FED-9-59-31-1209BE | |
| 4. SHULL FED-9-59-31-2124CE | |
| 5. SHULL FED-9-59-31-0508CDE | |
| 6. SHULL FED-9-59-31-1209AE | |
| 7. SHULL FED-9-59-31-2124CE2 | |
| 8. SHULL FED-9-59-31-2124BE | |
| 9. PROPOSED ACCESS ROAD | |
| 10. DISTURBANCE AREA | |

LEGEND:

- | | | | |
|--|-----------------|--|--------------------|
| | = PROPOSED WELL | | = DISTURBANCE AREA |
| | = WATER WELL | | = 500' RADIUS |
| | = PROPOSED ROAD | | |
| | = DITCH | | |
| | = STREAM | | |

MEASURED FROM NEAREST WELL OR FACILITY:

- | | |
|----------------------------------|-----------|
| BUILDING | ±5280' NW |
| BUILDING UNIT | ±5280' NW |
| PUBLIC ROAD (COUNTY ROAD 100) | ±864' N |
| PROPERTY LINE (MARTIN, TAMERA K) | 894' N |
| UTILITY (POWERLINE) | ±5280' NW |
| RAILROAD | ±5280' W |

REFERENCE LOCATION

SHULL FED-9-59-31-2124CE

LAT: 40.711378°
LONG: -104.022585°
ELEVATION: 4905'
942' FNL & 2148' FWL
PDOP: 1.8
GPS OPERATOR: ALEC SHULL

NOTES:

- THIS ILLUSTRATION DOES NOT REPRESENT A MONUMENTED LAND SURVEY AND THEREFORE CANNOT BE RELIED UPON TO DETERMINE OWNERSHIP.
- THIS ILLUSTRATION IS INTENDED FOR REFERENCE USE ONLY AND SHOULD NOT BE USED TO ESTABLISH, TRANSFER, OR DISPUTE BOUNDARIES.
- PARCEL LINES DEPICTED HEREON MAY NOT HAVE BEEN FIELD VERIFIED AND MAY BE BASED UPON PUBLICLY AVAILABLE DATA.

DATA SOURCE:

AERIAL IMAGERY: NAIP 2015
WATER WELLS: COLORADO DWR
NHD: USGS

PUBLICLY AVAILABLE DATA
SOURCES HAVE NOT BEEN
INDEPENDENTLY VERIFIED BY
PFS.

MEASURED FROM NEAREST EDGE OF DISTURBANCE:

SURFACE WATER (ABANDONED DITCH) ±0' N

MEASURED FROM NEAREST WELL:

WATER WELL	±1455' NW	SWL = 40'
PERMIT: 5911		RECEIPT: 9059457

DISTURBANCE ACREAGE:

10.14 ACRES DRILLING OPERATIONS
3.44 ACRES INTERIM RECLAIM

CURRENT SURFACE USE:
RANGELAND

FUTURE SURFACE USE:
RANGELAND

PREPARED BY:



FIELD DATE:

02-24-16

DRAWING DATE:

04-21-16

BY:

KAD

CHECKED BY:

MLP

SITE NAME:

SHULL PAD 9-59-31-NENW

SURFACE LOCATION:

NE 1/4 NW 1/4 SEC. 31, T9N, R59W, 6TH P.M.
WELD COUNTY, COLORADO

PREPARED FOR:

