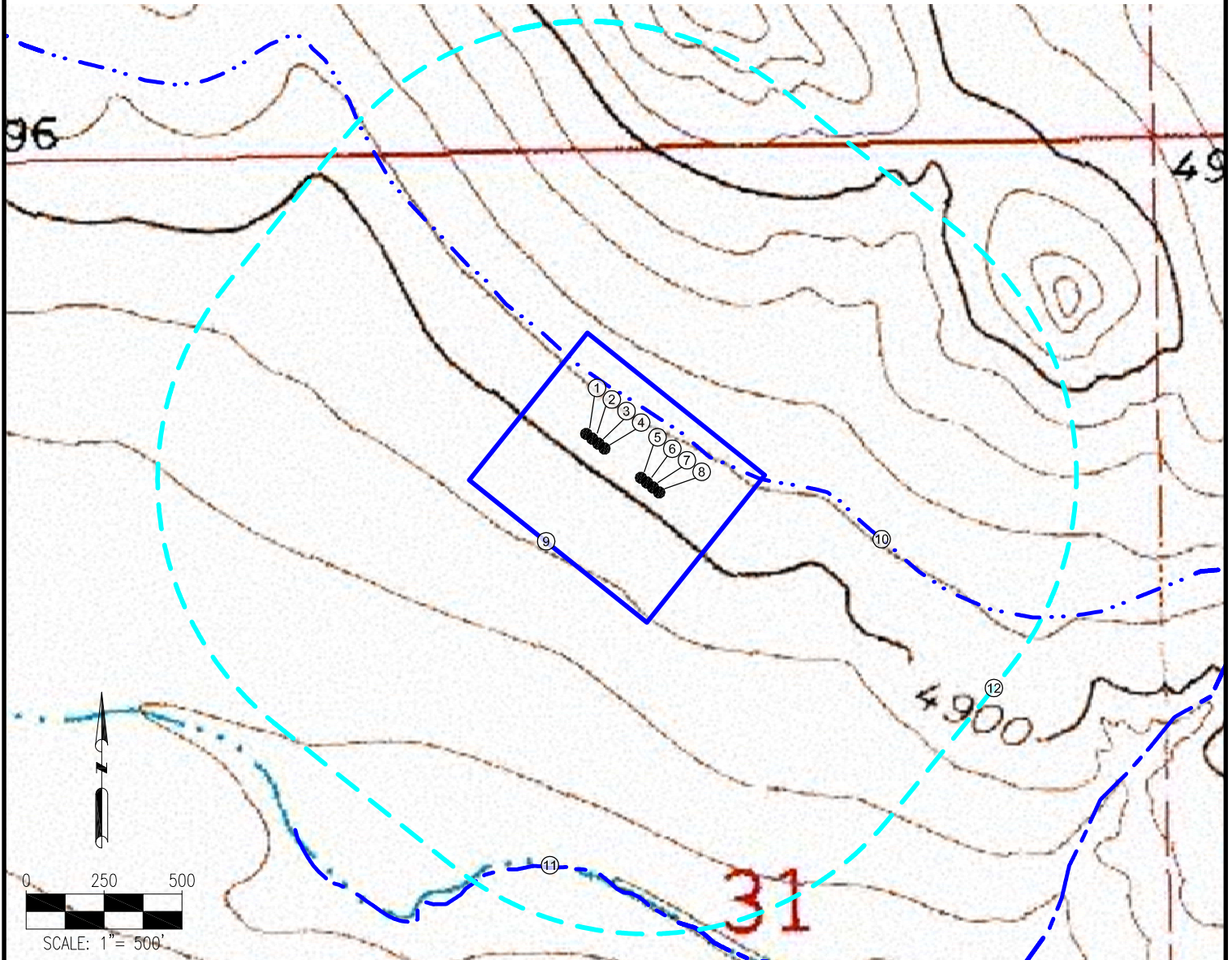


# SHULL PAD 9-59-31-NENW HYDROLOGY MAP



MEASUREMENTS ARE MADE FROM THE NEAREST EDGE OF THE DISTURBANCE AREA.

- |                              |                                      |
|------------------------------|--------------------------------------|
| 1. SHULL FED-9-59-31-0508BE  | 10. DITCH (ABANDONED) IS $\pm 0'$ NE |
| 2. SHULL FED-9-59-31-1209CE  | 11. STREAM IS $\pm 817'$ S           |
| 3. SHULL FED-9-59-31-1209BE  | 12. 1000' RADIUS                     |
| 4. SHULL FED-9-59-31-2124CE  |                                      |
| 5. SHULL FED-9-59-31-0508CDE |                                      |
| 6. SHULL FED-9-59-31-1209AE  |                                      |
| 7. SHULL FED-9-59-31-2124CE2 |                                      |
| 8. SHULL FED-9-59-31-2124BE  |                                      |
| 9. DISTURBANCE AREA          |                                      |

## LEGEND:

- = PROPOSED WELL
- = STREAM
- ... = DITCH
- ▭ = DISTURBANCE AREA
- = 1000' RADIUS

## NOTES:

1. THIS ILLUSTRATION DOES NOT REPRESENT A MONUMENTED LAND SURVEY AND THEREFORE CANNOT BE RELIED UPON TO DETERMINE OWNERSHIP.
2. THIS ILLUSTRATION IS INTENDED FOR REFERENCE USE ONLY AND SHOULD NOT BE USED TO ESTABLISH, TRANSFER, OR DISPUTE BOUNDARIES.
3. PARCEL LINES DEPICTED HEREON MAY NOT HAVE BEEN FIELD VERIFIED AND MAY BE BASED UPON PUBLICLY AVAILABLE DATA.

## DATA SOURCE:

TOPO MAP: USGS  
NHD: USGS  
  
PUBLICLY AVAILABLE DATA  
SOURCES HAVE NOT BEEN  
INDEPENDENTLY VERIFIED BY PFS.

PREPARED BY:



FIELD DATE:  
02-24-16

DRAWING DATE:  
04-21-16

BY:  
KAD

CHECKED BY:  
MLP

SITE NAME:

SHULL PAD 9-59-31-NENW

SURFACE LOCATION:

NE 1/4 NW 1/4 SEC. 31, T9N, R59W, 6TH P.M.  
WELD COUNTY, COLORADO

PREPARED FOR:

