

Company: Anadarko Petroleum Company

Well: Green XX 8-4

Field: Wattenberg

County: Weld State: Colorado

Ultrasonic Imager

Cement Evaluation (Short)

Gamma Ray - CCL Log

County: Weld  
 Field: Wattenberg  
 Location: SHL: NW NW 8 1N 65W  
 Well: Green XX 8-4  
 Company: Anadarko Petroleum Company

Location:	SHL: NW NW 8 1N 65W 560' FNL & 660' FWL LAT: 40.071660 / LONG: -104.694910	Elev.:	K.B. 4989.00 ft G.L. 4977.00 ft D.F. 4989.00 ft
Permanent Datum:	Mean Sea Level	Elev.:	0.00 ft
Log Measured From:	Kelly Bushing	Elev.:	4989.00 ft above Perm.Datum
Drilling Measured From:	Kelly Bushing		
API Serial No.	Section: 8	Towship: 1N	Range: 65W
05-123-23718			

Logging Date	24-Sep-2015
Run Number	One
Depth Driller	8142.00 ft
Schlumberger Depth	8142.00 ft
Bottom Log Interval	7700.00 ft
Top Log Interval	185.00 ft
Casing Fluid Type	Water
Salinity	
Density	9 lbm/gal
Fluid Level	0.00 ft
BIT/CASING/TUBING STRING	
Bit Size	7.88 in
From	1085.00 ft
To	8142.00 ft
Casing/Tubing Size	4.5 in
Weight	11.6 lbm/ft
Grade	N80
From	12.00 ft
To	8121.00 ft
Max Recorded Temperatures	242.64 degF
Logger on Bottom	24-Sep-2015 02:13:00
Unit Number	9115
Recorded By	Peter Brookens
Location:	Fort Morgan, Colora
Witnessed By	Logan Lehnert

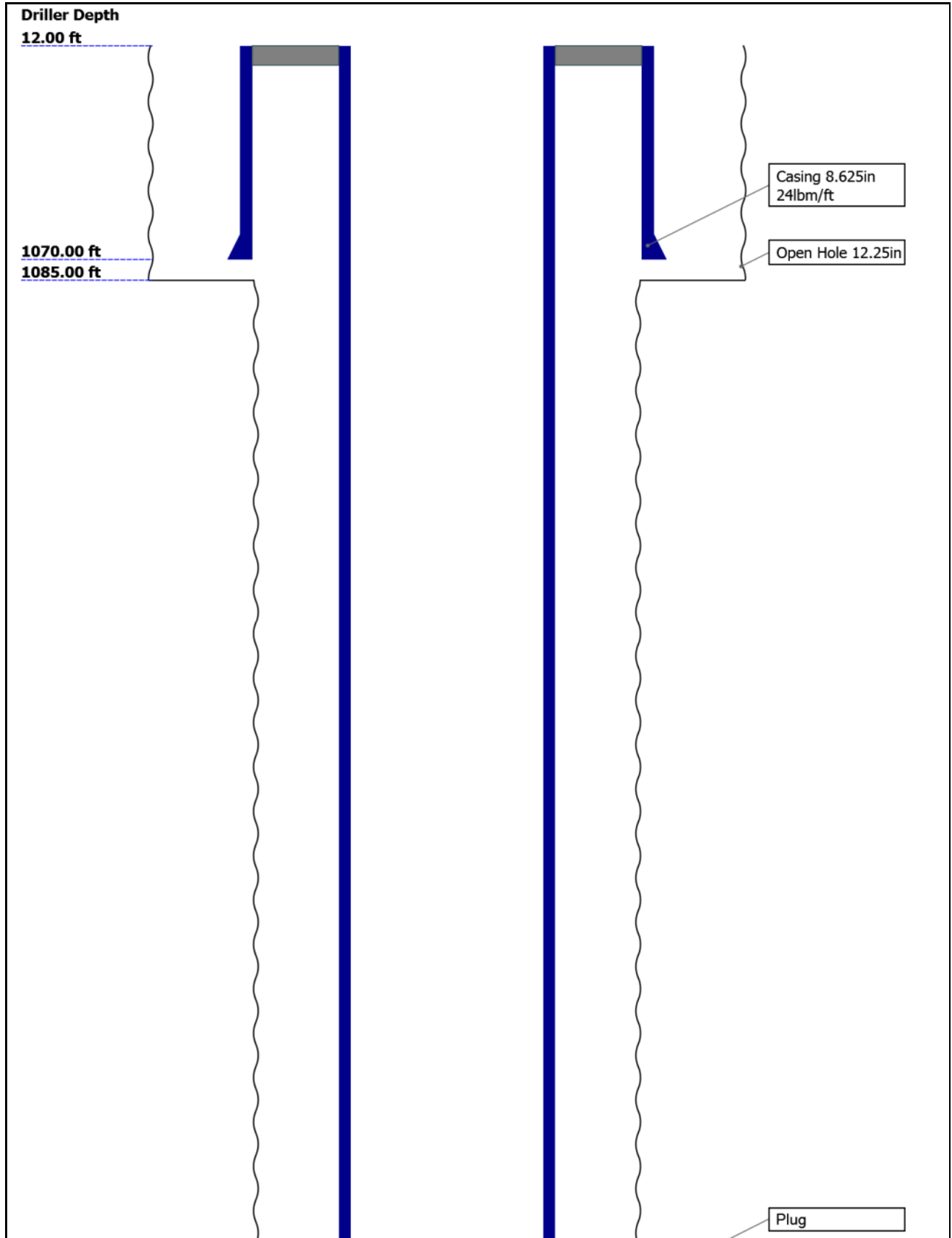
## Disclaimer

THE USE OF AND RELIANCE UPON THIS RECORDED-DATA BY THE HEREIN NAMED COMPANY (AND ANY OF ITS AFFILIATES, PARTNERS, REPRESENTATIVES, AGENTS, CONSULTANTS AND EMPLOYEES) IS SUBJECT TO THE TERMS AND CONDITIONS AGREED UPON BETWEEN SCHLUMBERGER AND THE COMPANY, INCLUDING: (a) RESTRICTIONS ON USE OF THE RECORDED-DATA; (b) DISCLAIMERS AND WAIVERS OF WARRANTIES AND REPRESENTATIONS REGARDING COMPANY'S USE AND RELIANCE UPON THE RECORDED-DATA; AND (c) CUSTOMER'S FULL AND SOLE RESPONSIBILITY FOR ANY INFERENCE DRAWN OR DECISION MADE IN CONNECTION WITH THE USE OF THIS RECORDED-DATA.

## Contents

1. Header
2. Disclaimer
3. Contents
4. Well Sketch
5. Borehole Size/Casing/Tubing Record
6. Operational Run Summary
7. Remarks and Equipment Summary
8. Depth Summary
9. Import of USI Cement
  - 9.1 USI Fluid Properties Measurement
  - 9.2 USI Cement
  - 9.3 Parameter Listing
10. Import of USI Goodwin
  - 10.1 USI Goodwin
11. XYZ ( USI Fluid Acoustic Slowness vs Depth 3.0 in )
12. XYZ ( USI Acoustic Impedance of Mud vs Depth 3.0 in )

# Well Sketch



7745.00 ft

7814.00 ft

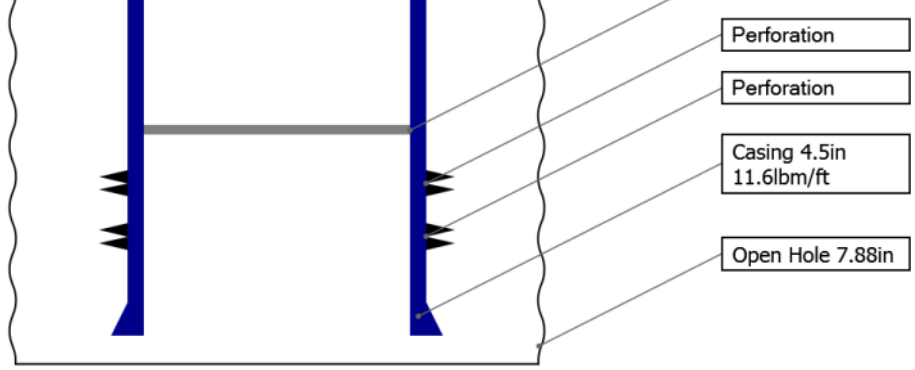
7820.00 ft

7824.00 ft

7832.00 ft

8121.00 ft

8142.00 ft



## Borehole Size/Casing/Tubing Record

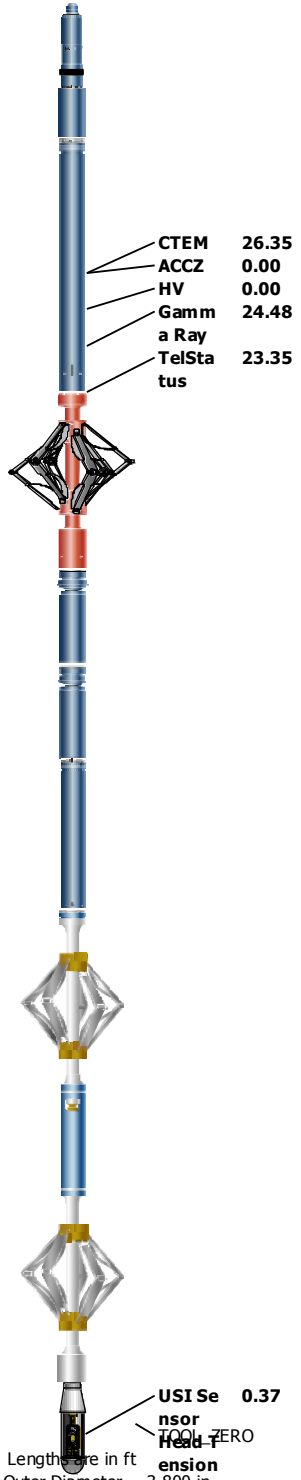
Bit					
Bit Size ( in )	12.25	7.88			
Top Driller ( ft )	12	1085			
Top Logger ( ft )	12	1085			
Bottom Driller ( ft )	1085	8142			
Bottom Logger ( ft )	1085	8142			
Casing					
Size ( in )	8.625	4.5			
Weight ( lbm/ft )	24	11.6			
Inner Diameter ( in )	8.097	4			
Grade	J55	N80			
Top Driller ( ft )	12	12			
Top Logger ( ft )	12	12			
Bottom Driller ( ft )	1070	8121			
Bottom Logger ( ft )	1070	8121			

## Operational Run Summary

Parameter ( unit )	One				
Date Log Started	24-Sep-2015				
Time Log Started	01:07:42				
Date Log Finished	24-Sep-2015				
Time Log Finished	03:26:07				
Top Log Interval ( ft )	185.00				
Bottom Log Interval ( ft )	7700.00				
Total Depth ( ft )	7745.00				
Max Hole Deviation ( deg )	4.58				
Azimuth of Max Deviation ( deg )	339.73				
Bit Size ( in )	7.880				
Logging Unit Number	9115				
Logging Unit Location	Fort Morgan, Colorado				
Recorded By	Peter Brookens				

Witnessed By	Logan Lehnert				
Service Order Number	D7FE-00026				

## Remarks and Equipment Summary

One: Toolstring	One: Remarks	
<div style="display: flex; justify-content: space-between;"> <div style="width: 45%;"> <p><b>Equip name</b> &amp; <b>length</b></p> <p><b>LEH-QT:</b> 32.77 2493 LEH-QT: 2493</p> <p><b>EDTC-B:</b> 29.85 8629 EDTH-B: 8652 EDTG-A EDTC-B: 8629</p> <p><b>CME-AF</b> 23.35 :XX</p> <p><b>AH-120</b> 19.56 :729</p> <p><b>AH-184</b> 17.56 :2765</p> <p><b>USIT-E:9</b> 15.56 92 ECH-MFA :1964 USAC-A: 992 USIS-A:9 99 USSC-B USRS-AB :865 USI-SEN SOR</p> </div> <div style="width: 45%;"> <p><b>MP name</b> &amp; <b>Offset</b></p> <p>CTEM 26.35 ACCZ 0.00 HV 0.00 Gamma 24.48 a Ray TelSta 23.35 tus</p> <p>USI Se 0.37 nsor TOOL_ZERO Head F ension</p> </div> </div>  <p style="font-size: small; margin-top: 10px;">Lengths are in ft Maximum Outer Diameter = 3.800 in Line: Sensor Location, Value: Gating Offset All measurements are relative to TOOL_ZERO</p>	<p>Logging Objective: Cement and Corrosion Evaluation.</p> <p>Toolstring ran as per toolsketch. Centralized with CME-AF and two knuckles used.</p> <p>All presentations as per client request.</p> <p>Log recorded 10 deg and 3in resolution.</p> <p>Main and Repeat Passes logged at 6000 ft/hr. Main pass logged with 1000 PSI. Repeat pass logged with 0 PSI.</p> <p>Logged from 7700' up to 185'. Interval discussed and approved with client.</p> <p>Freepipe Normalization performed from 387' to 366', assuming UDFSZ = 1.8 MRayl.</p> <p>Field pick TOC = 3597'. Expected TOC = 3585'.</p> <p>Cement Info:</p> <p>380 sks of 50:50 POZ G cmt @ 13.8 ppg + additives, 80 sks of HLC g 10.6 ppg + additives &amp; 260 sks of 50:50 Poz G cmt @ 14.</p> <p>Zone of missing cement between 4350' and 4100'.</p> <p>Max recorded temperature: 242.64 degF.</p> <p>TD not tagged (discussed with client).</p> <p>AFE: 88864588</p> <p>Crew: Musgrave, Ocanas, Brookens</p>	

## Depth Summary

	One		
--	-----	--	--

### Depth Measuring Device

Type	IDW-JA		
Serial Number	5895		
Calibration Date			

Calibrator Serial Number			
Calibration Cable Type	7-46		
Wheel Correction 1	-2		
Wheel Correction 2	-1		

### Tension Device

Type	CMTD-B/A		
Serial Number	147		
Calibration Date	04-Sep-2015		
Calibrator Serial Number	78805A		
Number of Calibration Points	10		
Calibration Root Mean Square Error	10		
Calibration Peak Error	20		

### Logging Cable

Type	7-46A-XS		
Serial Number	U714069		
Length	12800.00 ft		
Conveyance Type	Wireline		
Rig Type	Land		

One:Depth Control Parameters		Depth Control Remarks
Log Sequence	First Log In the Well	All Schlumberger Wireline depth procedures followed.
Rig Up Length At Surface		IDW used as primary depth control.
Rig Up Length At Bottom		Z-chart used as secondary depth control.
Rig Up Length Correction		Depth Accuracy: 0.05%
Stretch Correction	8.42 ft	Depth Repeatability: 0.02%
Tool Zero Check At Surface		Repeat & Main passes tied in with down log using GR peaks from 7500'-7450'.

### Import of USI Cement

### USIT - Fluid Properties Measurement

Run Name	Pass Name	Start Depth(ft)	Stop Depth(ft)
Run 1	Main[3]:Up	7690.52	168.24

Fluid Velocity = "Automatic".  
CFVL equals DFSL channel

Start Depth(ft)	Stop Depth(ft)	Start Value(us/ft)	End Value(us/ft)
-----------------	----------------	--------------------	------------------

Mud Impedance = "FreePipe Norm."  
Free Pipe normalization zone is : 111.47m(365.73ft) to 117.88m(386.75ft)

MUD\_N\_FRP = 1.00  
DFD = 1.08g/cm3(9.00lbm/gal)  
CZMD median computed in free pipe normalization interval = 1.58 MRayl

Start Depth(ft)	Stop Depth(ft)	Start Value(Mrayl)	End Value(Mrayl)
-----------------	----------------	--------------------	------------------

One

### USI Cement - Main Pass - 1000 PSI

<b>Log</b>	Company:Anadarko Petroleum Company	Well:Green XX 8-4
	One: Main[3]:Up:S007	

Description: USI Cement Format: USI Cement Index Scale: 2 in per 100 ft Index Unit: ft Index Type: Measured Depth Creation Date: 05-Jan-2016 12:24:32

TIME\_1900 - Time Marked every 60.00 (s)

Casing

Casing  
Collar  
Locator  
Ultrasonic  
(CCLU)  
USIT-E

-20 in 20

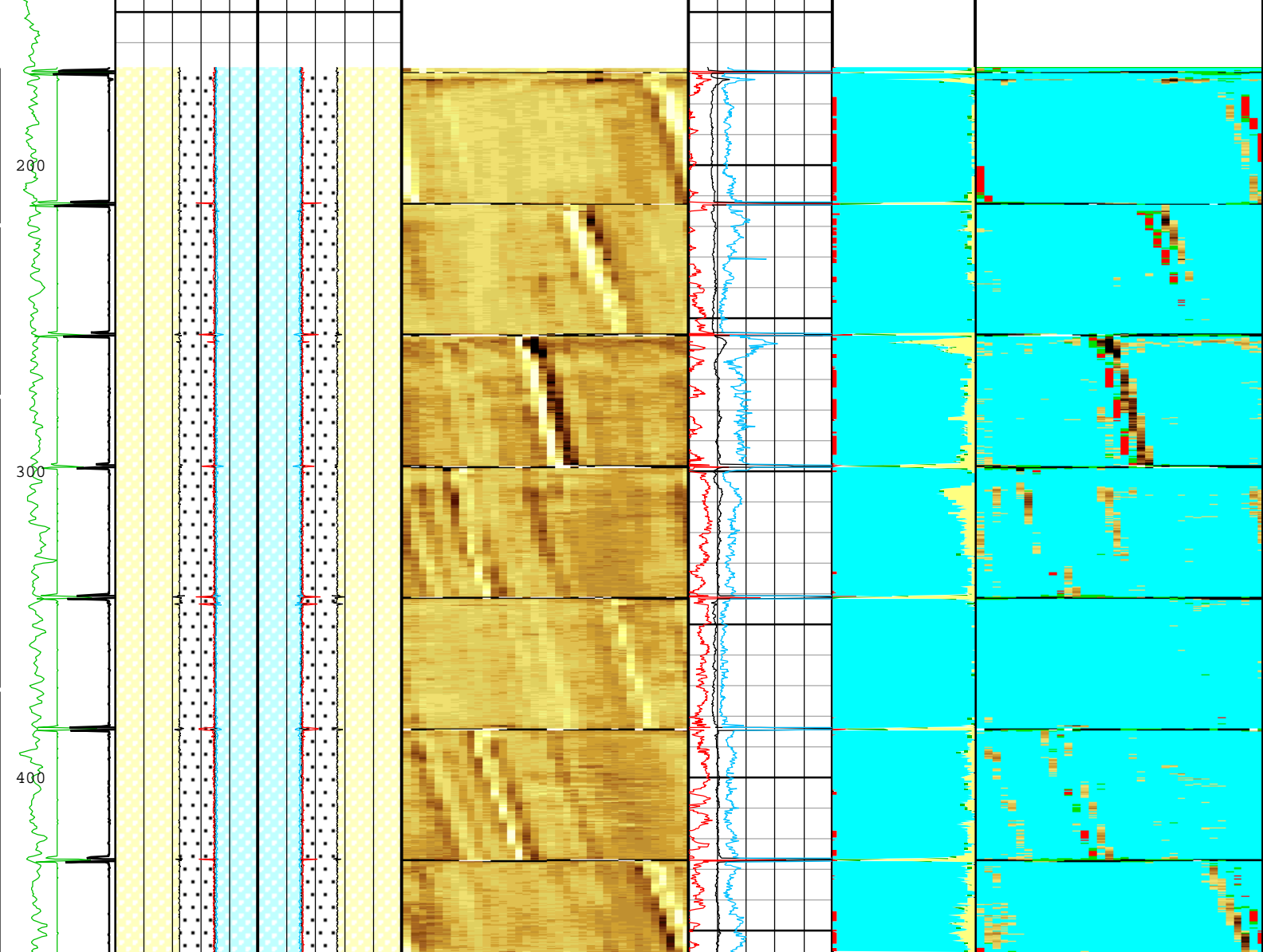
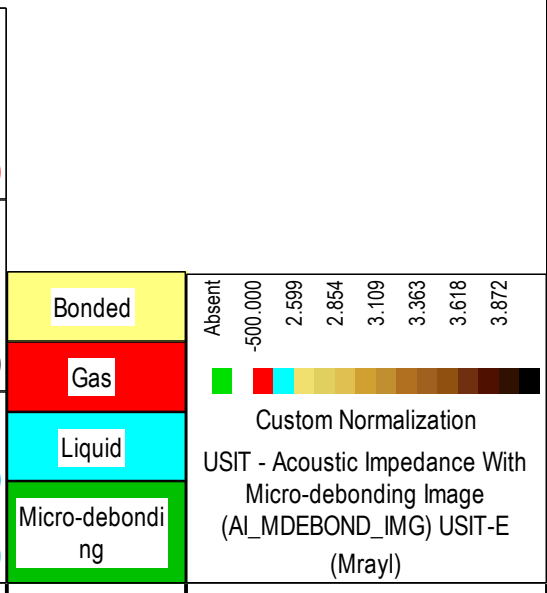
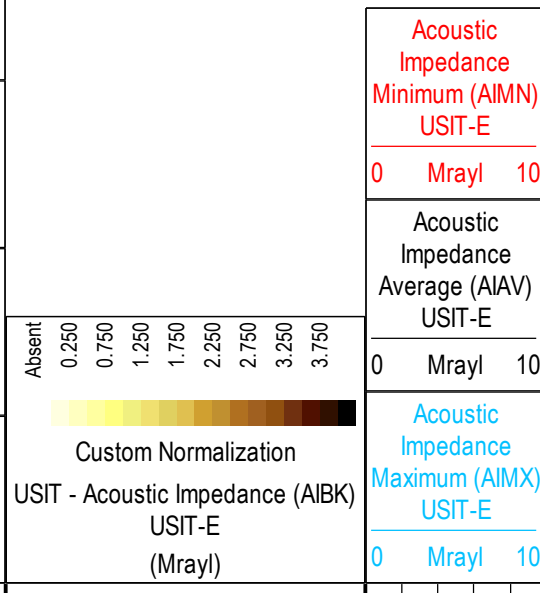
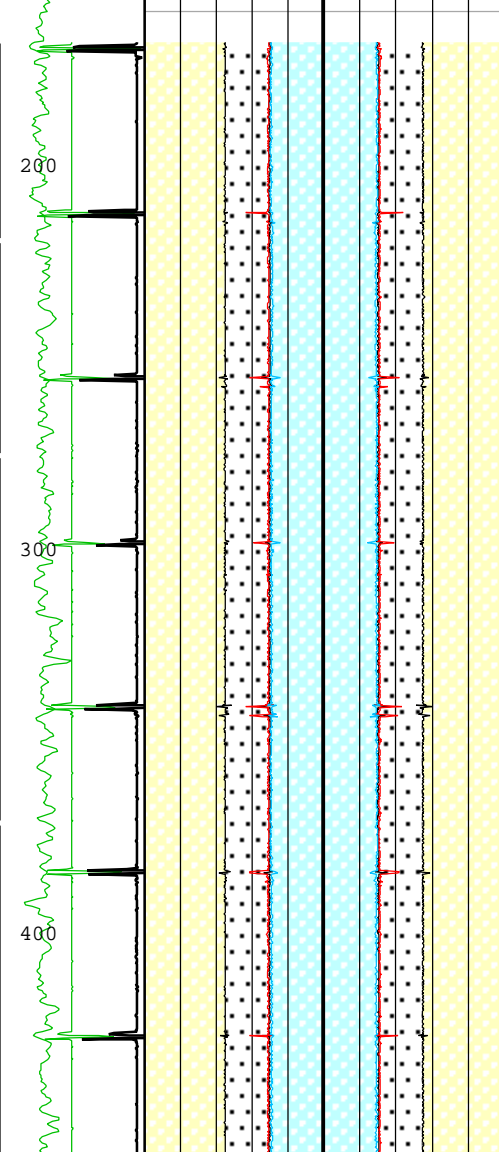
Gamma Ray (ECGR_EDT C) EDTC-B	External Radii Average (ERAV) USIT-E	External Radii Average (ERAV) USIT-E
	2.7 in 1.7	1.7 in 2.7

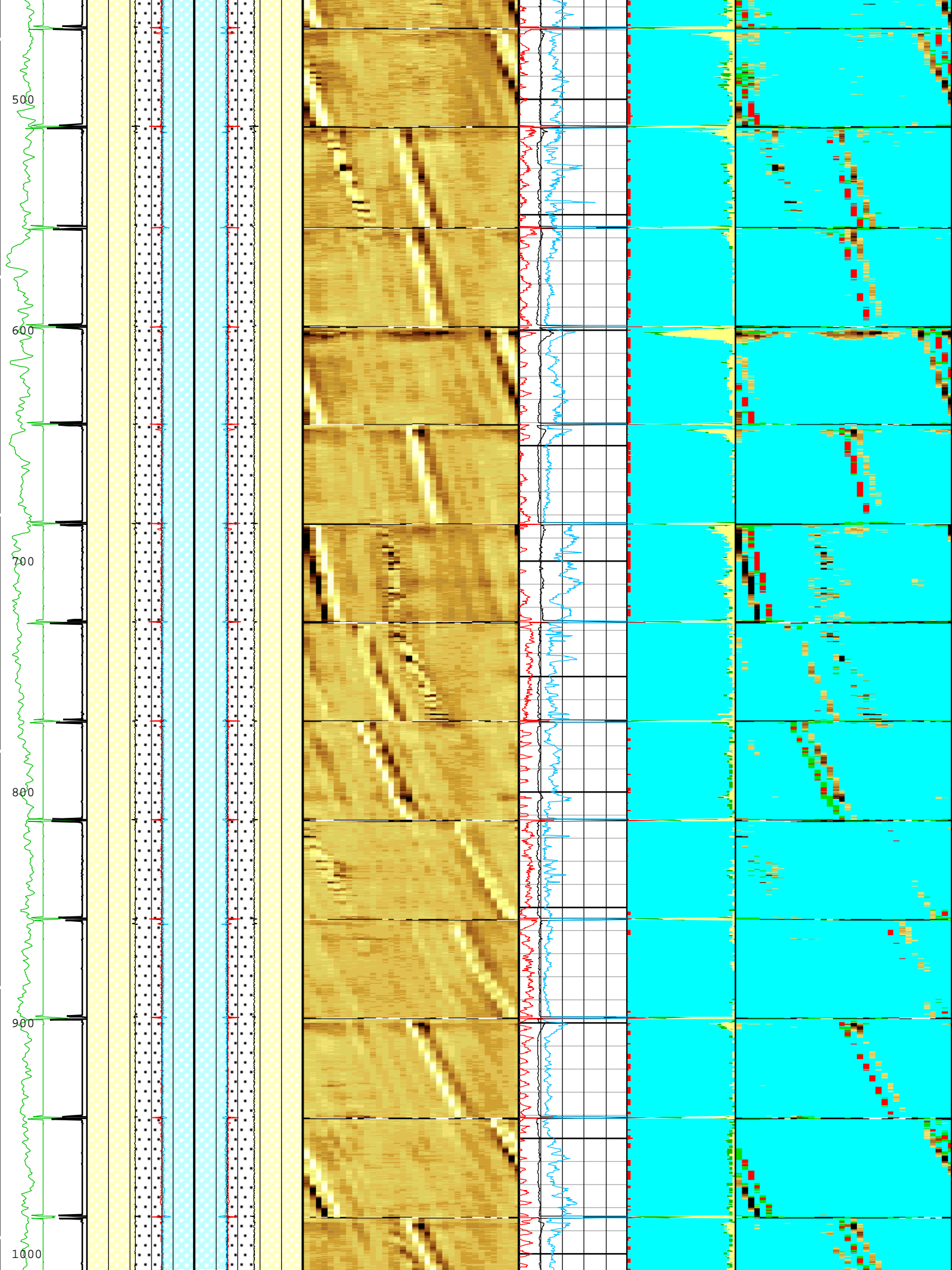
Stuck Tool Indicator, Total (STIT)	Internal Radius Averaged Value (IRAV) USIT-E	Internal Radius Averaged Value (IRAV) USIT-E
	2.7 in 1.7	1.7 in 2.7

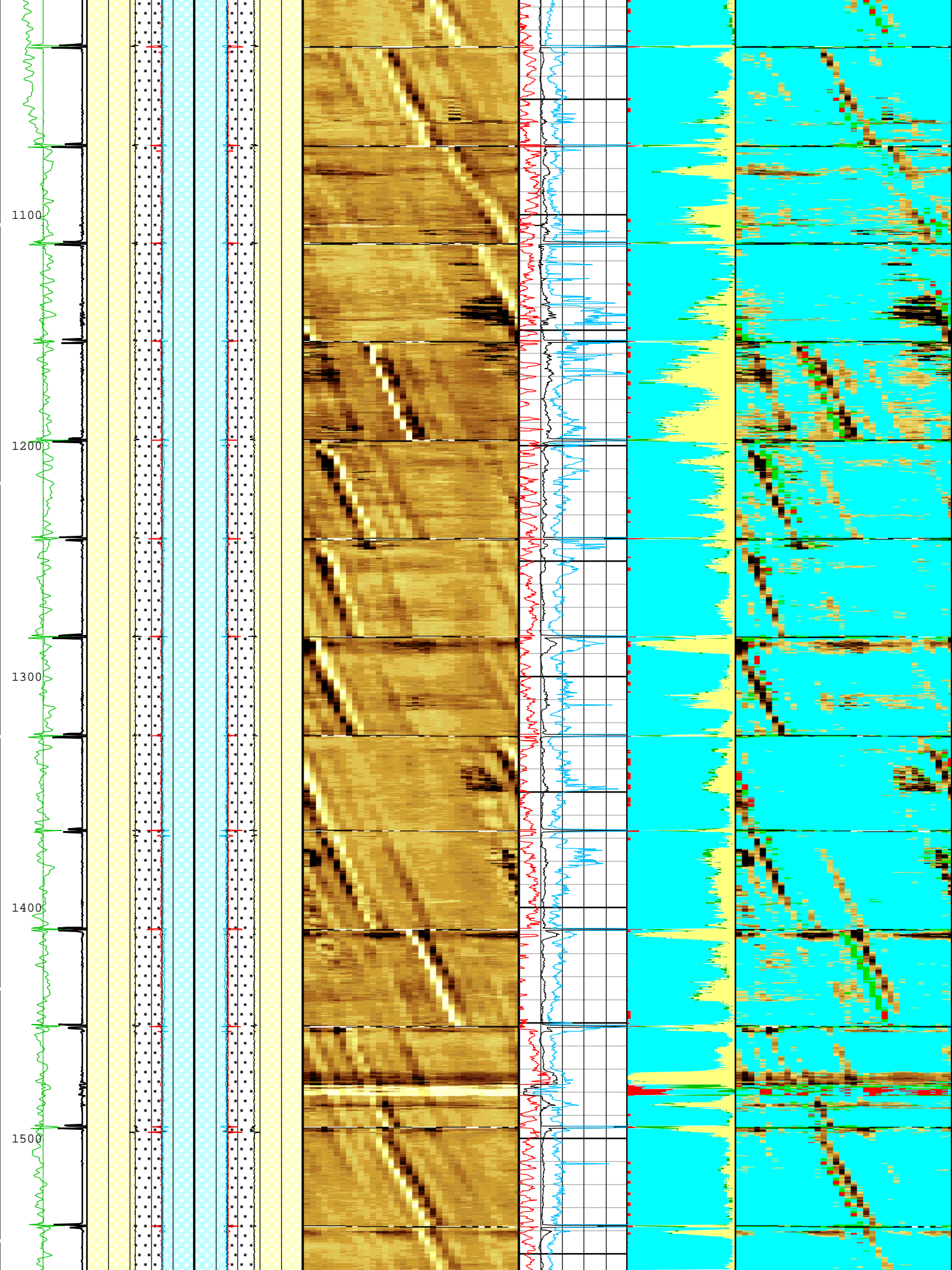
Casing Collar Locator Ultrasonic (CCLU) USIT-E	Internal Radius Maximum Value (IRMX) USIT-E	Internal Radius Maximum Value (IRMX) USIT-E
	2.7 in 1.7	1.7 in 2.7

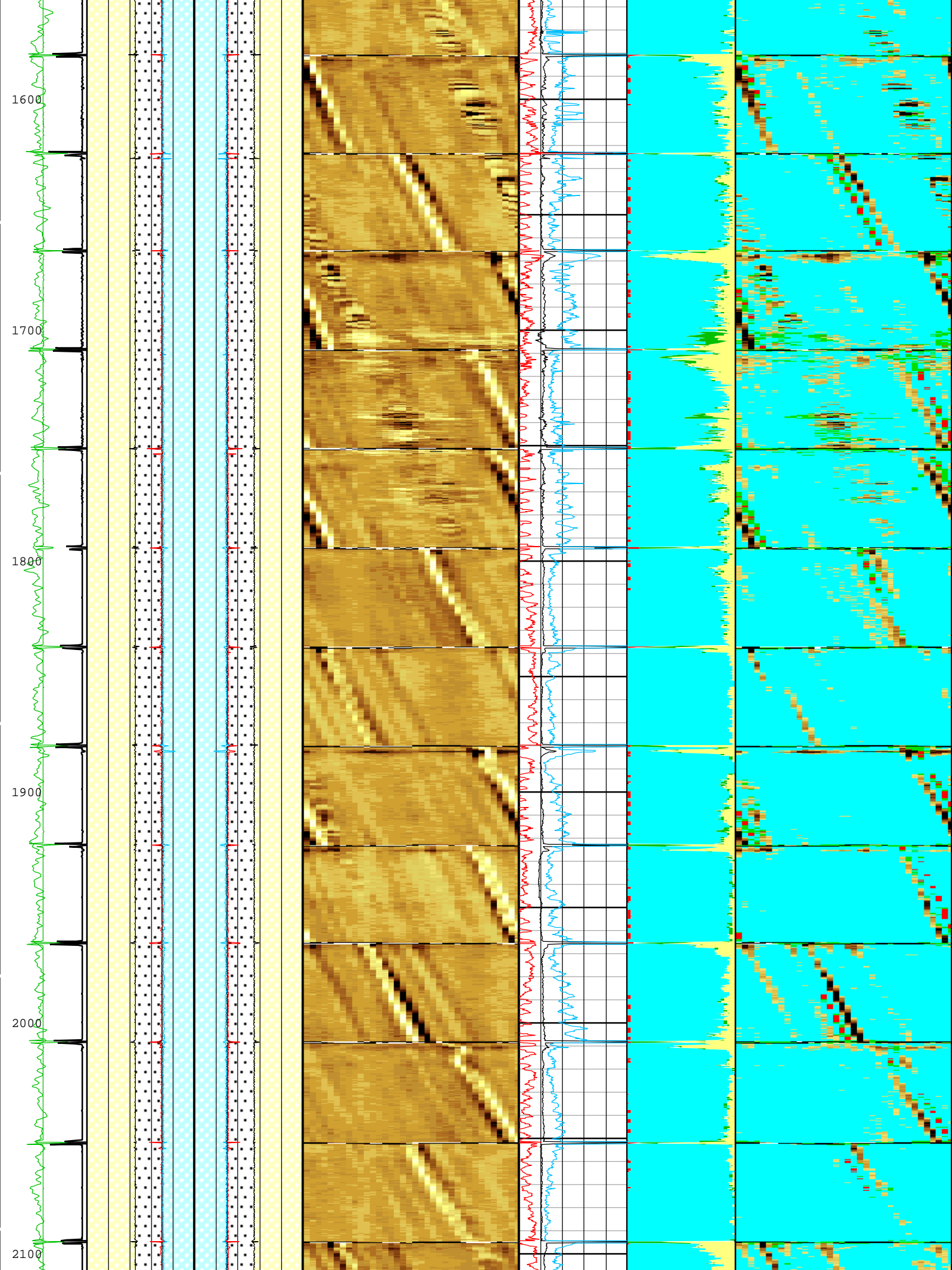
Casing Collar Locator Ultrasonic (CCLU) USIT-E	Internal Radius Minimum Value (IRMN) USIT-E	Internal Radius Minimum Value (IRMN) USIT-E
	2.7 in 1.7	1.7 in 2.7

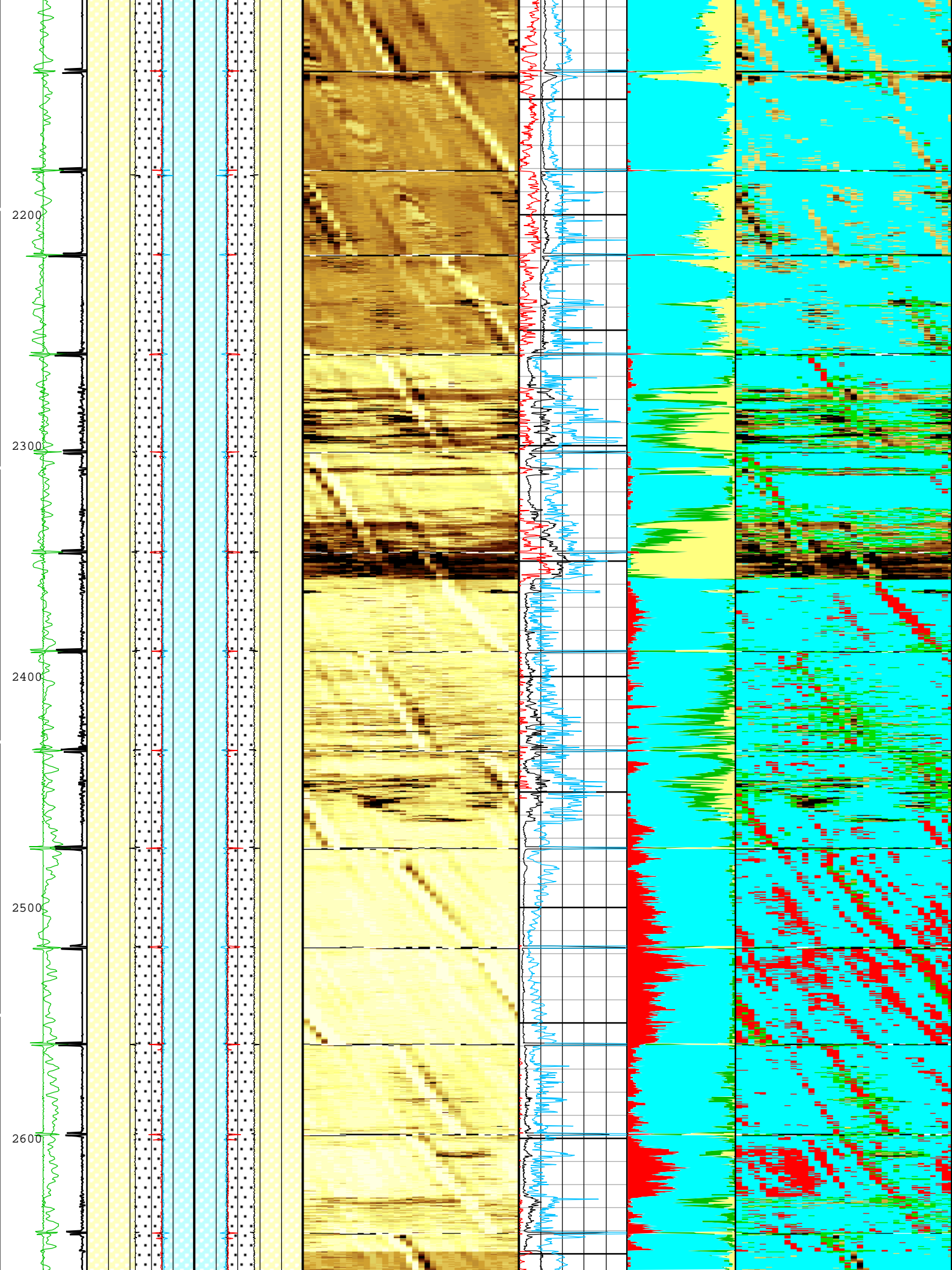
-19 in 1

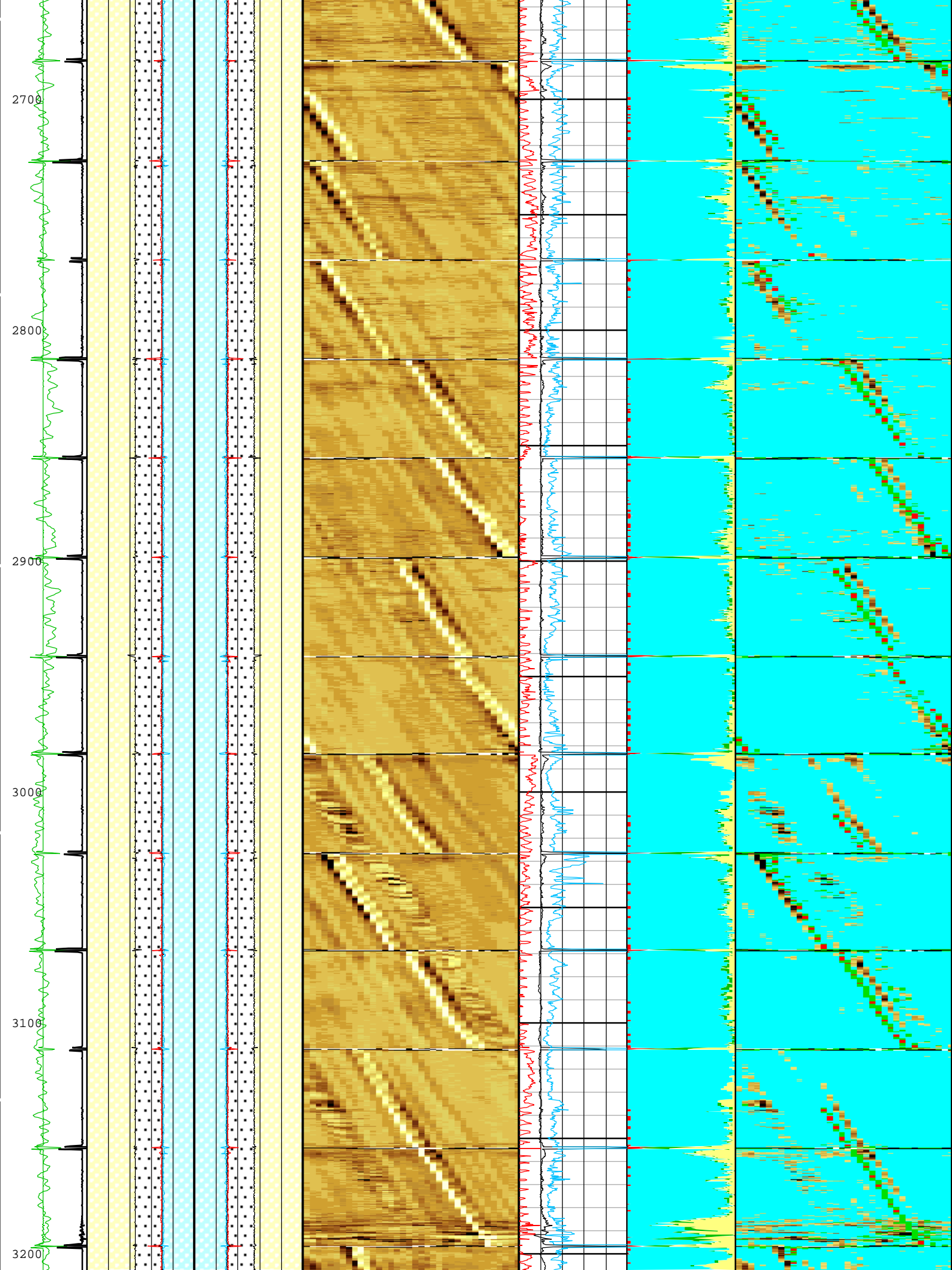


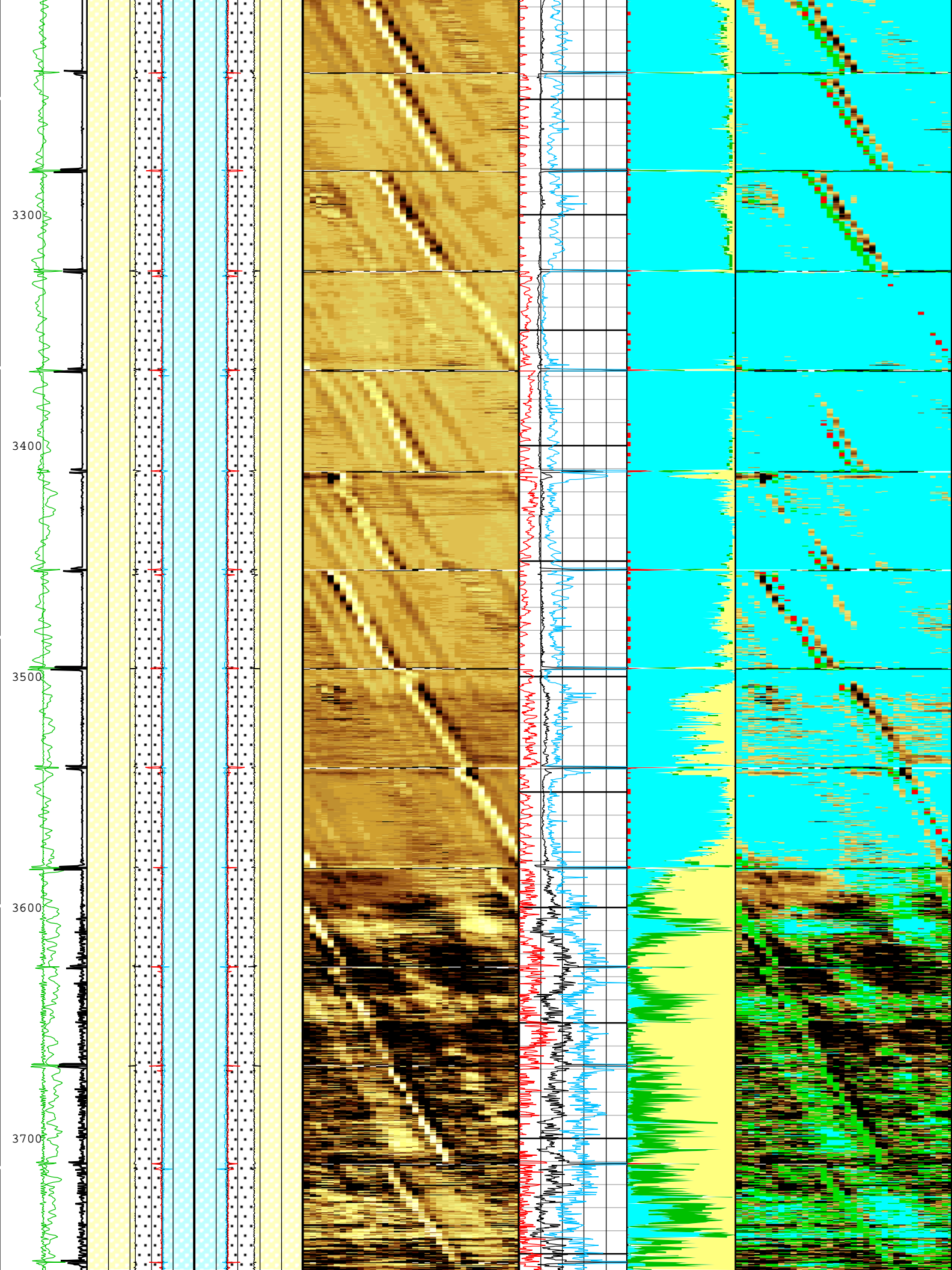


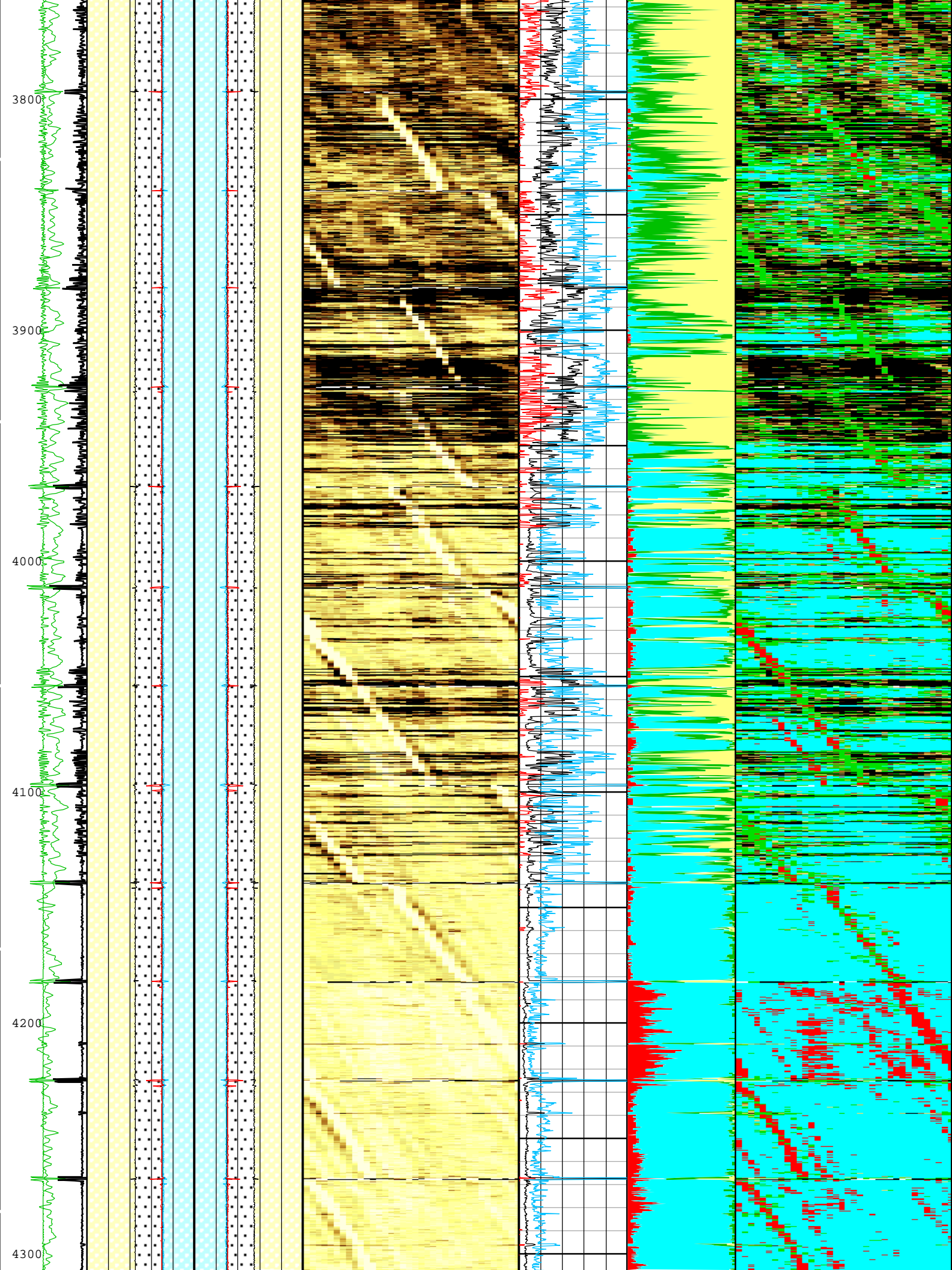


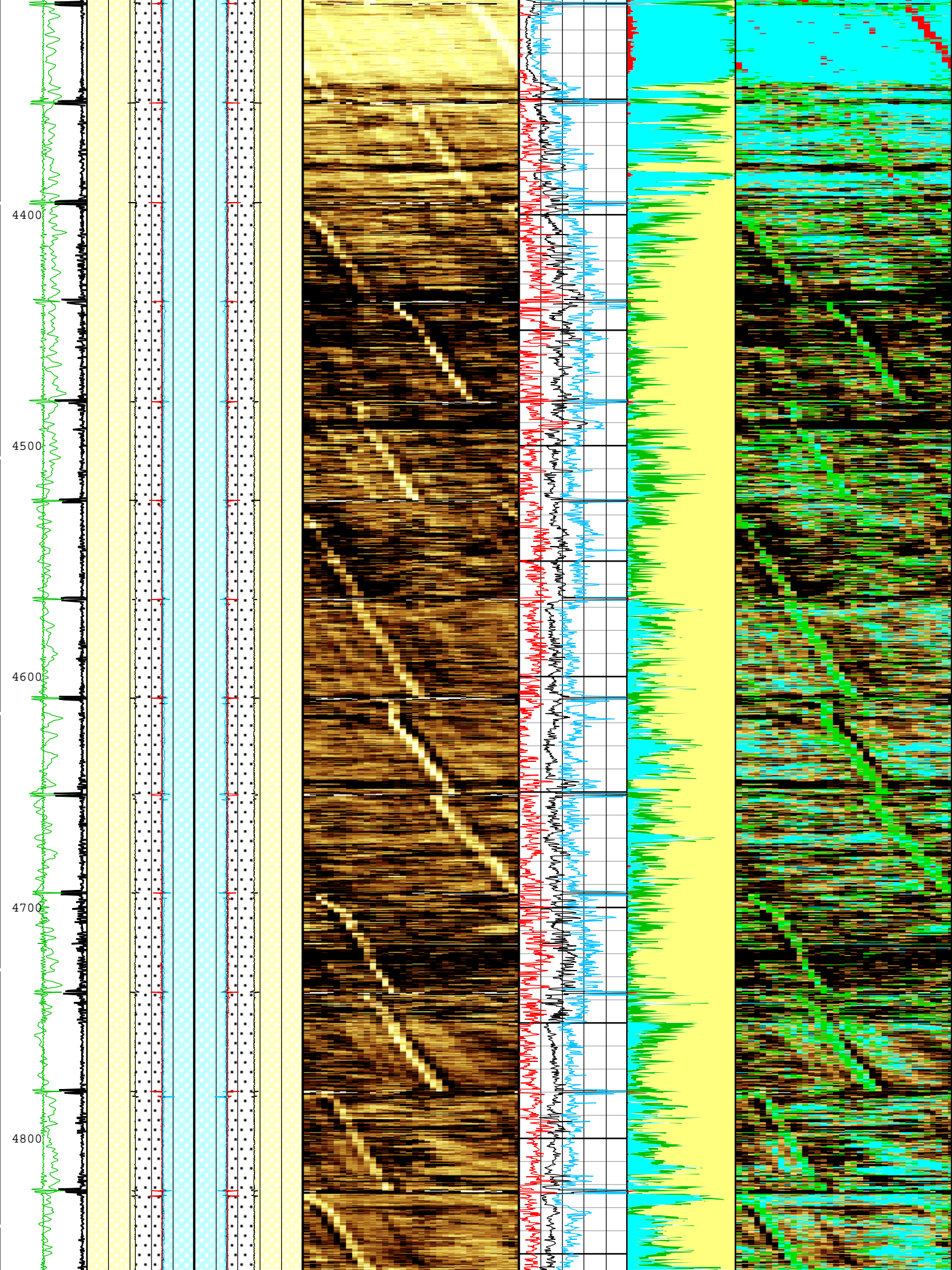


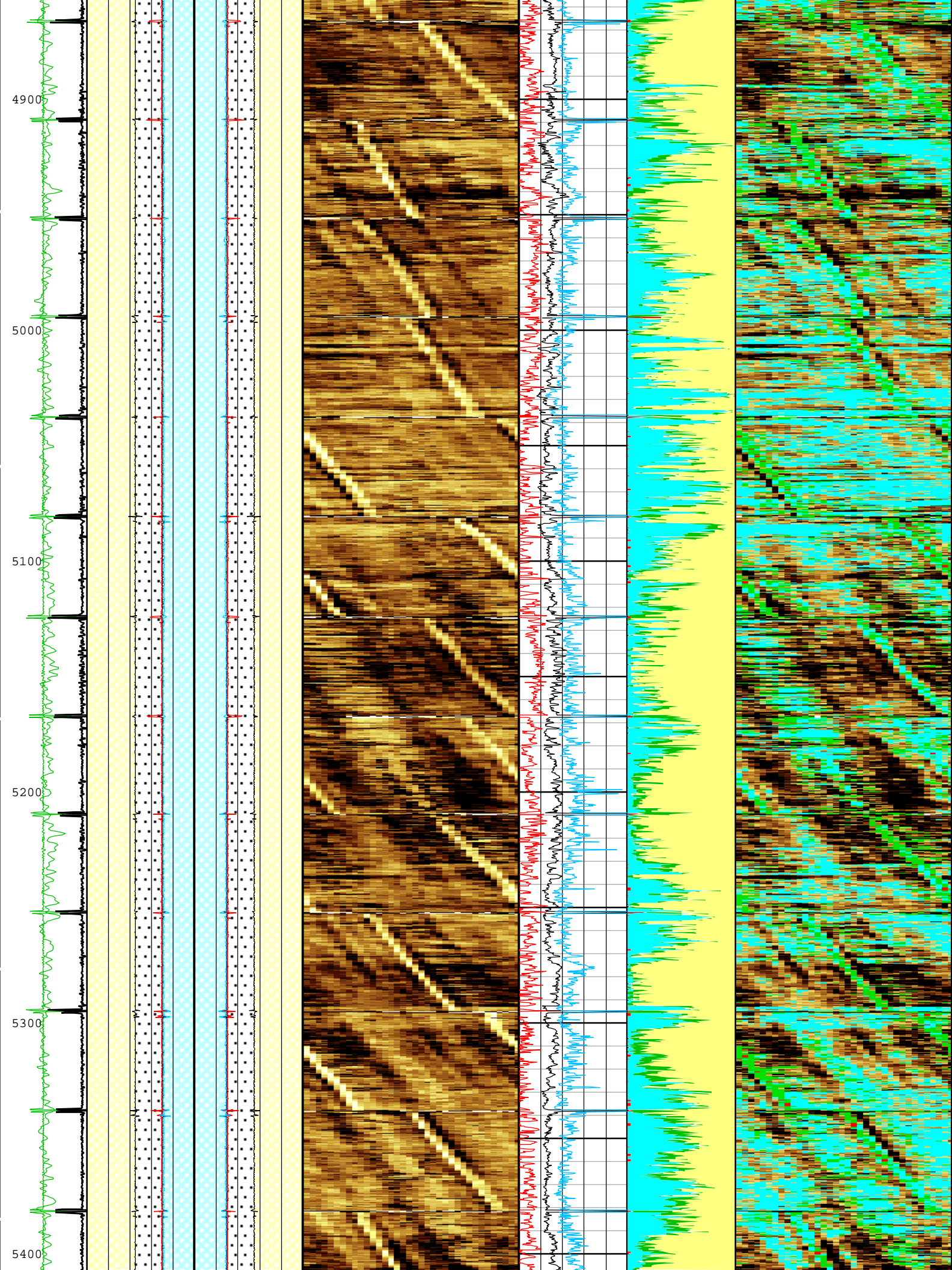


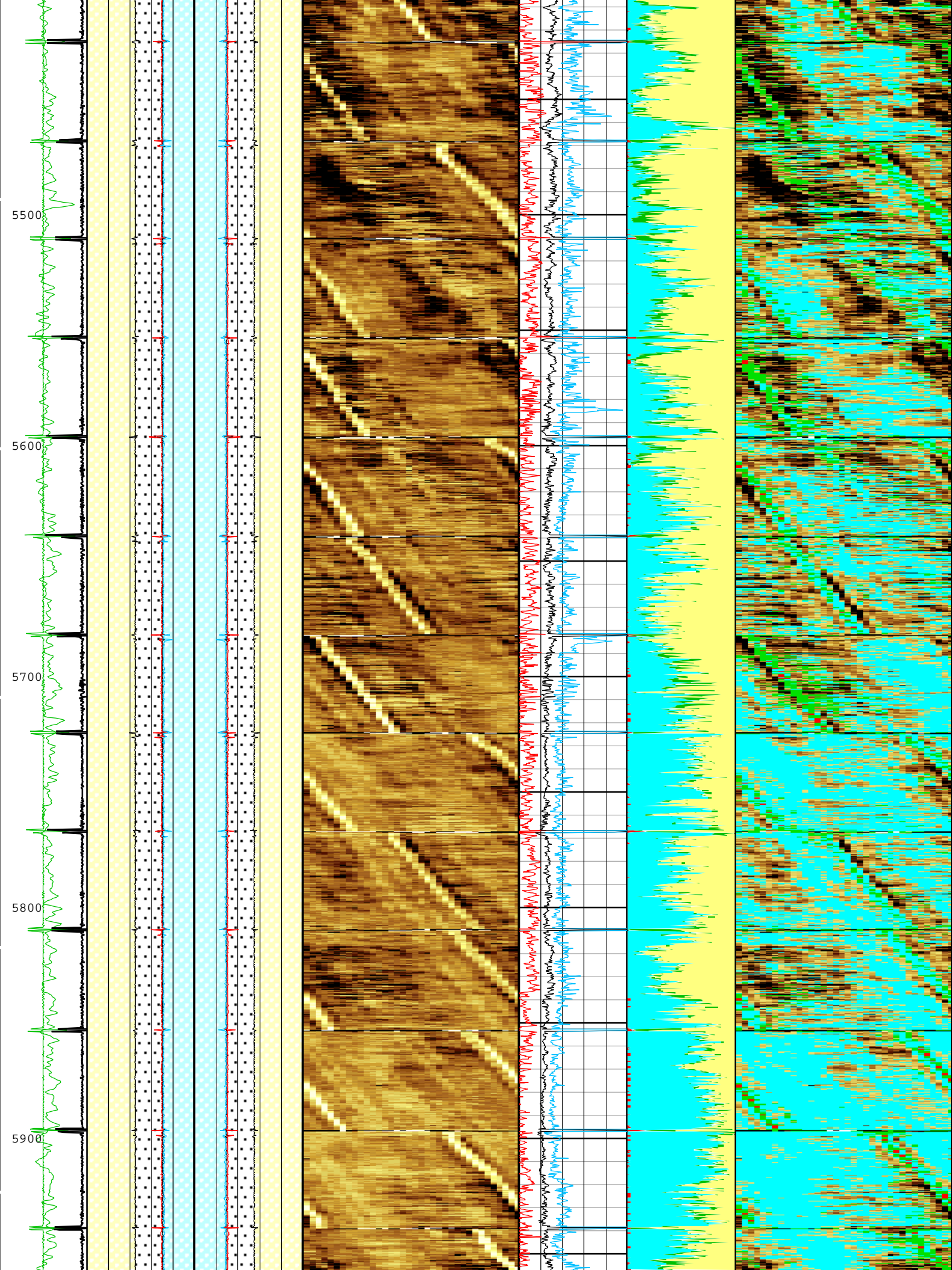


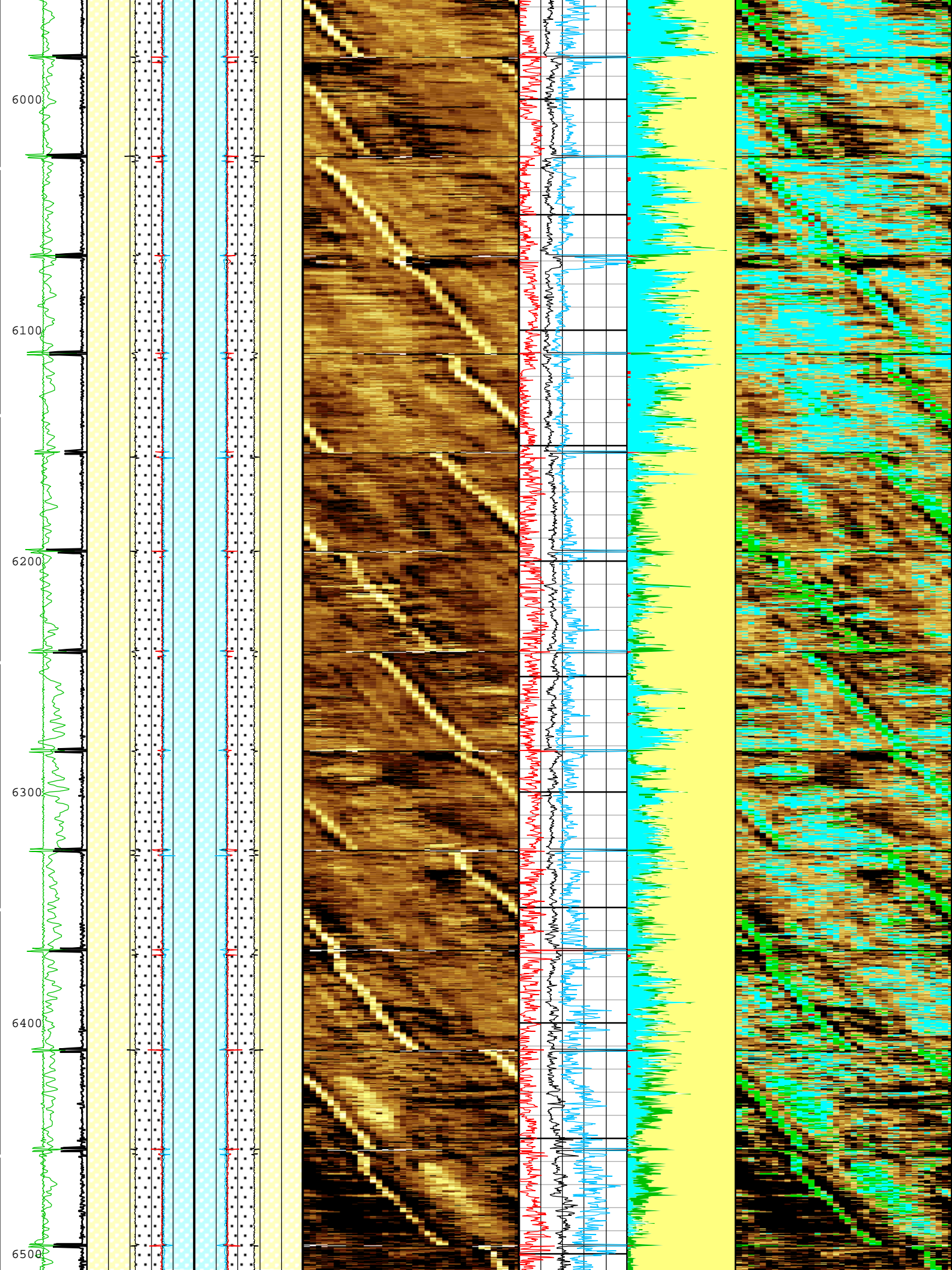


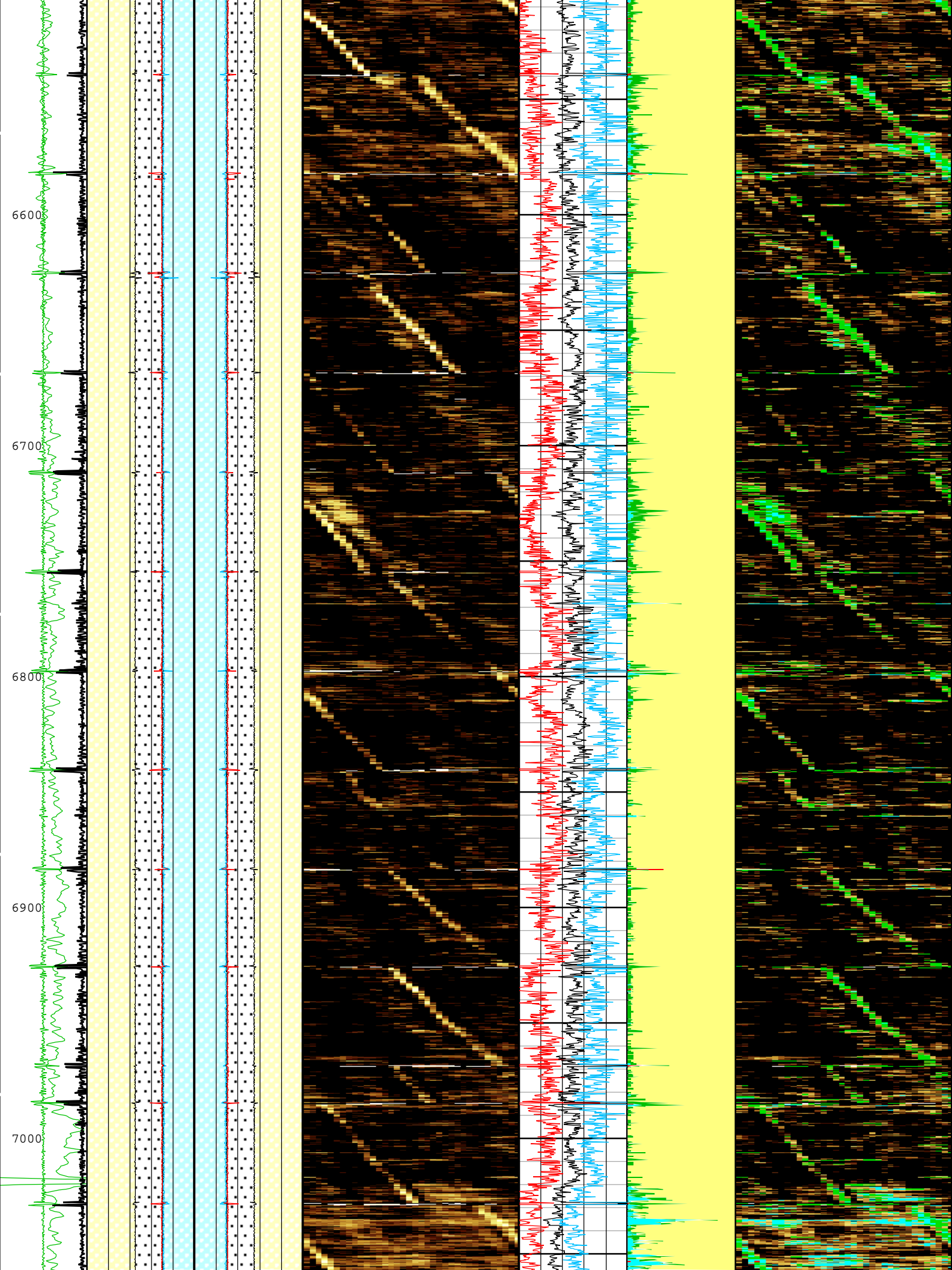


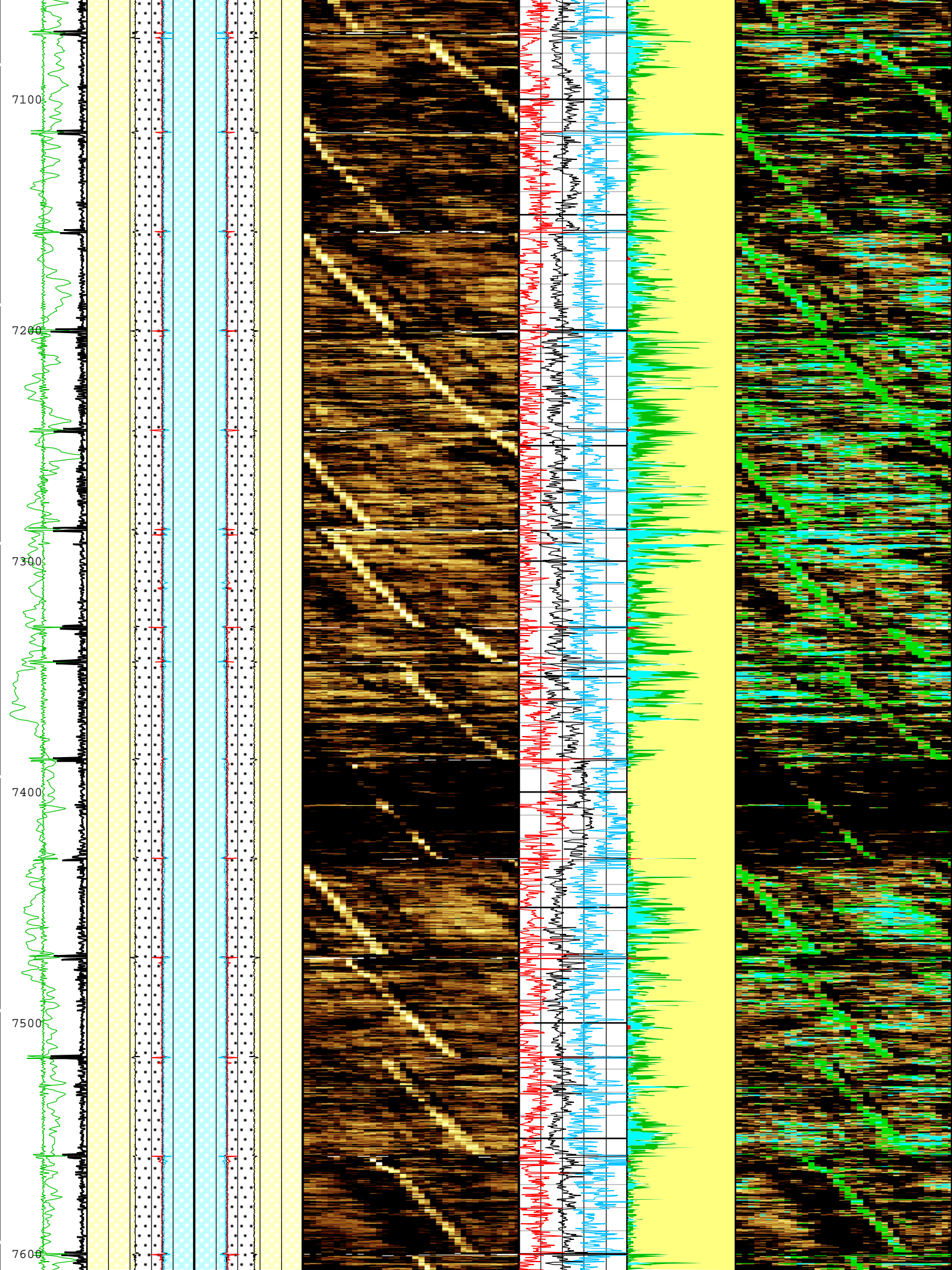


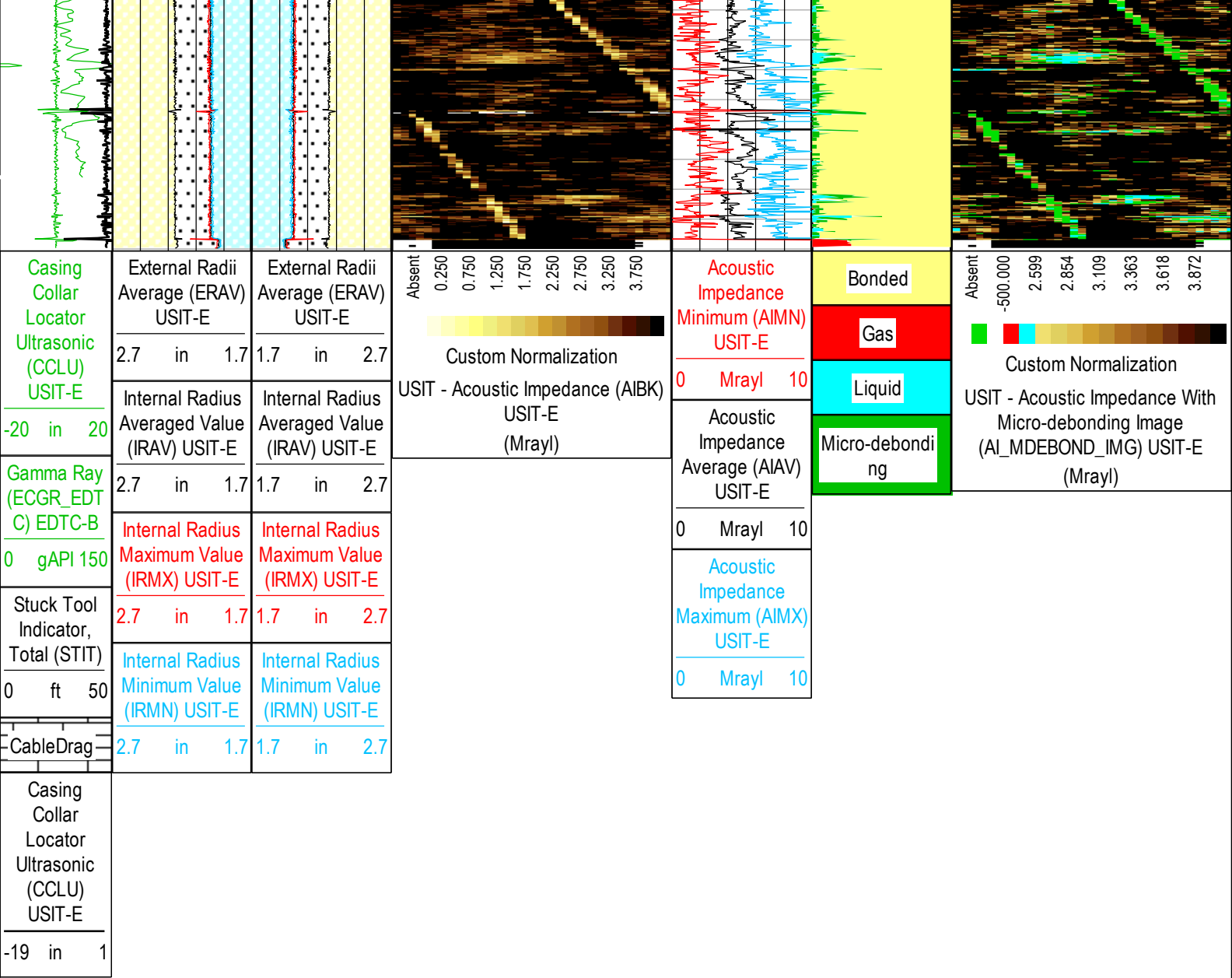












TIME\_1900 - Time Marked every 60.00 (s)

Description: USI Cement Format: USI Cement Index Scale: 2 in per 100 ft Index Unit: ft Index Type: Measured Depth Creation Date: 05-Jan-2016 12:24:32

## Channel Processing Parameters

### One: Parameters

Parameter	Description	Tool	Value	Unit
ISSBAR	Barite Mud Presence Flag	Borehole	No	
BERJ	Bad Echo Rejection	USIT-E	On	
BHS	Borehole Status (Open or Cased Hole)	Borehole	Cased	
BS	Bit Size	WLSESSION	Depth Zoned	in
CASING_PRATIO	Casing Poisson Ratio	USIT-E	Standard Poisson Ratio	
CBLO	Casing Bottom (Logger)	WLSESSION	8121	ft
CDEN	Cement Density	EDTC-B	16.69	lbm/gal
CMTY(U-USIT_CEMT)	Cement Type	USIT-E	Light Cement	
DC_MODE	Depth Correction Mode	DepthCorrection	Real-time	
DFD	Drilling Fluid Density	Borehole	9	lbm/gal
DFT	Drilling Fluid Type	Borehole	Water	
DTMD	Borehole Fluid Slowness	Borehole	206	us/ft
FDII	FPM Data Interpolation Interval	USIT-E	0	ft
GCSE_DOWN_PASS	Generalized Caliper Selection for WL Log Down Passes	Borehole	BS	

GCSE_UP_PASS	Generalized Caliper Selection for WL Log Up Passes	Borehole	BS	
GR_MULTIPLIER	Gamma Ray Multiplier	EDTC-B	1	
HEMA	Hematite Presence Flag	Borehole	No	
ICE_PROCESS	ICE Processing	USIT-E	Yes	
IMAR	Image Rotation	USIT-E	Off	
MEAS_WLEN	Tcube Processing Window Length in Measurement Mode	USIT-E	15.37	us
MUD_N_FRP	Free Pipe Mud Normalization Factor	USIT-E	1	
MUD_N_THE	Theoretical Mud Normalization Factor	USIT-E	1	
RCOD	Reference Calibrator Outer Diameter	USIT-E	4.5	in
RCSO	Reference Calibrator Standoff	USIT-E	0.842	in
RCTH	Reference Calibrator Thickness	USIT-E	0.216	in
SDNV	Number of Vertical Samples used for Micro-debonding Computation	USIT-E	5	
SDTHOR	Acoustic Impedance STD Horizontal Threshold for Micro-debonding	USIT-E	0.5	Mrayl
SDTVER	Acoustic Impedance STD Vertical Threshold for Micro-debonding	USIT-E	0.3	Mrayl
SOCN	Standoff Distance	EDTC-B	0.125	in
SOCO	Standoff Correction Option	EDTC-B	No	
TCUB	T^3 Processing Level	USIT-E	Loop	
TD	Total Measured Depth	Borehole	7745	ft
THDH	Maximum Search Thickness (percentage of nominal)	USIT-E	130	%
THDL	Minimum Search Thickness (percentage of nominal)	USIT-E	70	%
TPOS_EDTC	Tool Position: Centered or Eccentered	EDTC-B	Eccentered	
U-USIT_DFSZ	Drilling Fluid Specific Acoustic Impedance	USIT-E	1.8	Mrayl
UFGDE	Fiberglass Density	USIT-E	16.27	lbm/gal
UFGPS	Fiberglass Processing Selection	USIT-E	No	
UFGVL	Fiberglass Velocity	USIT-E	9678.48	ft/s
USI_FSOD	USIT USI Fluid Slowness Fits Casing Outer Diameter	USIT-E	0_OFF	
USI_FVEL_SEL	USI Fluid Velocity Selection	USIT-E	Automatic	
USI_ZMUD_SEL	USI Mud Impedance Selection	USIT-E	FreePipe Norm.	
THDP	Thickness Detection Policy	USIT-E	Fundamental	
VCAS	Ultrasonic Transversal Velocity in Casing	USIT-E	51.4	us/ft
ZCAS	Acoustic Impedance of Casing	USIT-E	46.25	Mrayl
ZINI	Initial Estimate of Cement Impedance	USIT-E	-1	Mrayl
ZMUD	Acoustic Impedance of Mud	Borehole	1.51	Mrayl
ZTCM	Acoustic Impedance Threshold for Cement	USIT-E	2.6	Mrayl
ZTGS	Acoustic Impedance Threshold for Gas	USIT-E	0.3	Mrayl

## Depth Zone Parameters

Parameter	Value	Start ( ft )	Stop ( ft )
BS	12.25	144	1085
BS	7.88	1085	7690.5

All depth are actual.

## Tool Control Parameters

### One: Parameters

Parameter	Description	Tool	Value	Unit
AGMN	Minimum Gain of Cartridge	USIT-E	-12	dB
AGMX	Maximum Gain of Cartridge	USIT-E	18	dB
U-USIT_DDT5	USIC Downhole Decimation for T5 only	USIT-E	0_NONE	
DOT(DOS)	Distance between Opposite Transducer Faces	USIT-E	1.756	in
EMXV	EMEX Voltage	USIT-E	Time Zoned	V

HRES	Horizontal Resolution	USIT-E	10 deg	
MAX_LOG_SPEED	Toolstring Maximum Logging Speed	WLSESSION	6750	ft/h
MOTOR_PROTECT	Motor Protection	USIT-E	On	
TMUC	Type of Mud	USIT-E	BRI	
UACLV_PERM	Ultrasonic ACLV Permanent	USIT-E	No	
ULOG	Logging Objective	USIT-E	MEASUREMENT	
UMFR	Modulation Frequency	USIT-E	500000	Hz
USFR	Ultrasonic Sampling Frequency	USIT-E	666667	Hz
UPAT	USIT Emission Pattern	USIT-E	Pattern 600 KHz	
UWKM	USIT Working Mode	USIT-E	Uncompressed 10 deg at 3.0 in HF	
USIT_DEPTHLOG	Starting Depth Log for Ultrasonics	USIT-E	7700	ft
USSP	Ultrasonic Service	USIT-E	USI	
VRES	Vertical Resolution	USIT-E	3.0 in	
WINB	Window Begin Time	USIT-E	18.52	us
WINE	Window End Time	USIT-E	58.52	us

### Time Zone Parameters

Parameter	Value	Start Time	Stop Time	Start Depth (ft)	Stop Depth (ft)
EMXV	50	24-Sep-2015 02:14:12	24-Sep-2015 02:31:50	7690.52	5941.08
EMXV	48	24-Sep-2015 02:31:50	24-Sep-2015 02:34:32	5941.08	5650.61
EMXV	46	24-Sep-2015 02:34:32	24-Sep-2015 03:24:55	5650.61	168.24

All depth are at tool zero.

## Import of USI Goodwin

### One

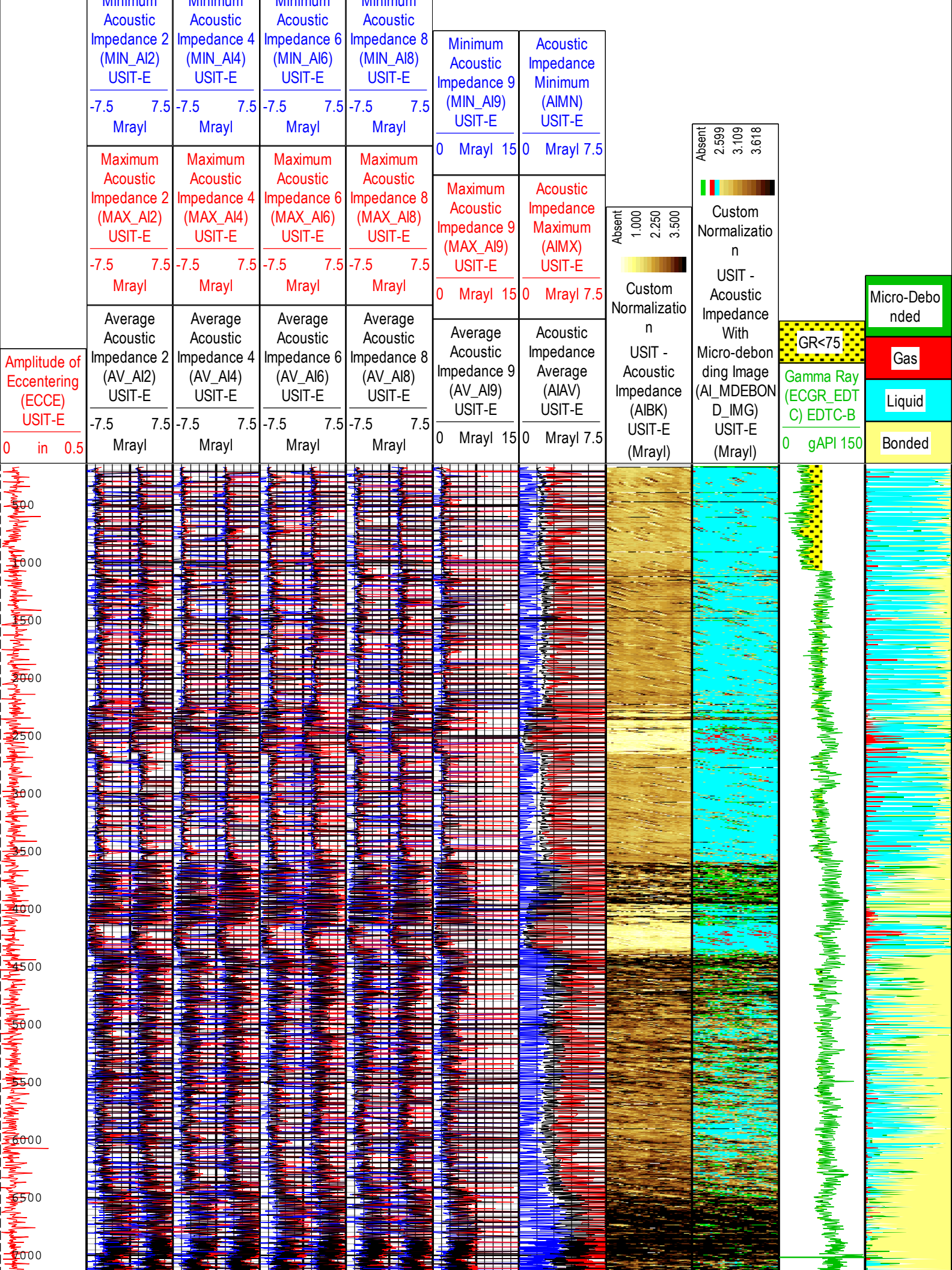
### USI Goodwin Compressed - Main Pass - 1000 PSI

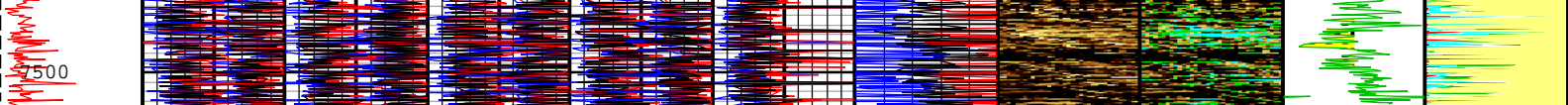
**Log** Company:Anadarko Petroleum Company Well:Green XX 8-4  
One: Main[3]:Up:S007

Description: USI Goodwin Format: USI Goodwin Index Scale: 0.1 in per 100 ft Index Unit: ft Index Type: Measured Depth Creation Date: 05-Jan-2016 12:24:40

TIME\_1900 - Time Marked every 60.00 (s)

Minimum Acoustic Impedance 1 (MIN_AI1) USIT-E	Minimum Acoustic Impedance 3 (MIN_AI3) USIT-E	Minimum Acoustic Impedance 5 (MIN_AI5) USIT-E	Minimum Acoustic Impedance 7 (MIN_AI7) USIT-E
0 Mrayl 15	0 Mrayl 15	0 Mrayl 15	0 Mrayl 15
Maximum Acoustic Impedance 1 (MAX_AI1) USIT-E	Maximum Acoustic Impedance 3 (MAX_AI3) USIT-E	Maximum Acoustic Impedance 5 (MAX_AI5) USIT-E	Maximum Acoustic Impedance 7 (MAX_AI7) USIT-E
0 Mrayl 15	0 Mrayl 15	0 Mrayl 15	0 Mrayl 15
Average Acoustic Impedance 1 (AV_AI1) USIT-E	Average Acoustic Impedance 3 (AV_AI3) USIT-E	Average Acoustic Impedance 5 (AV_AI5) USIT-E	Average Acoustic Impedance 7 (AV_AI7) USIT-E
0 Mrayl 15	0 Mrayl 15	0 Mrayl 15	0 Mrayl 15
Minimum	Minimum	Minimum	Minimum





<b>Amplitude of Eccentering (ECCE) USIT-E</b> 0 in 0.5	<b>Minimum Acoustic Impedance 1 (MIN_AI1) USIT-E</b> 0 Mrayl 15	<b>Minimum Acoustic Impedance 3 (MIN_AI3) USIT-E</b> 0 Mrayl 15	<b>Minimum Acoustic Impedance 5 (MIN_AI5) USIT-E</b> 0 Mrayl 15	<b>Minimum Acoustic Impedance 7 (MIN_AI7) USIT-E</b> 0 Mrayl 15	<b>Minimum Acoustic Impedance 9 (MIN_AI9) USIT-E</b> 0 Mrayl 15	<b>Acoustic Impedance Minimum (AIMN) USIT-E</b> 0 Mrayl 7.5	Absent 1.000 2.250 3.500 Custom Normalization USIT - Acoustic Impedance (AIBK) USIT-E (Mrayl) Absent 2.699 3.109 3.618 Custom Normalization USIT - Acoustic Impedance With Micro-debonding Image (AI_MDEBOND_IMG) USIT-E (Mrayl)	GR<75 Gamma Ray (ECGR_EDTC) EDTC-B 0 gAPI 150	<b>Micro-Debonded</b>
	<b>Maximum Acoustic Impedance 1 (MAX_AI1) USIT-E</b> 0 Mrayl 15	<b>Maximum Acoustic Impedance 3 (MAX_AI3) USIT-E</b> 0 Mrayl 15	<b>Maximum Acoustic Impedance 5 (MAX_AI5) USIT-E</b> 0 Mrayl 15	<b>Maximum Acoustic Impedance 7 (MAX_AI7) USIT-E</b> 0 Mrayl 15	<b>Maximum Acoustic Impedance 9 (MAX_AI9) USIT-E</b> 0 Mrayl 15	<b>Acoustic Impedance Maximum (AIMX) USIT-E</b> 0 Mrayl 7.5			<b>Gas</b>
	<b>Average Acoustic Impedance 1 (AV_AI1) USIT-E</b> 0 Mrayl 15	<b>Average Acoustic Impedance 3 (AV_AI3) USIT-E</b> 0 Mrayl 15	<b>Average Acoustic Impedance 5 (AV_AI5) USIT-E</b> 0 Mrayl 15	<b>Average Acoustic Impedance 7 (AV_AI7) USIT-E</b> 0 Mrayl 15	<b>Average Acoustic Impedance 9 (AV_AI9) USIT-E</b> 0 Mrayl 15	<b>Acoustic Impedance Average (AIAV) USIT-E</b> 0 Mrayl 7.5			<b>Liquid</b>
	<b>Minimum Acoustic Impedance 2 (MIN_AI2) USIT-E</b> -7.5 7.5 Mrayl	<b>Minimum Acoustic Impedance 4 (MIN_AI4) USIT-E</b> -7.5 7.5 Mrayl	<b>Minimum Acoustic Impedance 6 (MIN_AI6) USIT-E</b> -7.5 7.5 Mrayl	<b>Minimum Acoustic Impedance 8 (MIN_AI8) USIT-E</b> -7.5 7.5 Mrayl					<b>Bonded</b>
	<b>Maximum Acoustic Impedance 2 (MAX_AI2) USIT-E</b> -7.5 7.5 Mrayl	<b>Maximum Acoustic Impedance 4 (MAX_AI4) USIT-E</b> -7.5 7.5 Mrayl	<b>Maximum Acoustic Impedance 6 (MAX_AI6) USIT-E</b> -7.5 7.5 Mrayl	<b>Maximum Acoustic Impedance 8 (MAX_AI8) USIT-E</b> -7.5 7.5 Mrayl					
	<b>Average Acoustic Impedance 2 (AV_AI2) USIT-E</b> -7.5 7.5 Mrayl	<b>Average Acoustic Impedance 4 (AV_AI4) USIT-E</b> -7.5 7.5 Mrayl	<b>Average Acoustic Impedance 6 (AV_AI6) USIT-E</b> -7.5 7.5 Mrayl	<b>Average Acoustic Impedance 8 (AV_AI8) USIT-E</b> -7.5 7.5 Mrayl					

TIME\_1900 - Time Marked every 60.00 (s)

Description: USI Goodwin Format: USI Goodwin Index Scale: 0.1 in per 100 ft Index Unit: ft Index Type: Measured Depth Creation Date: 05-Jan-2016 12:24:40

XYZ Company: Anadarko Petroleum Company Well: Green XX 8-4 One: Main[3]:Up:S007

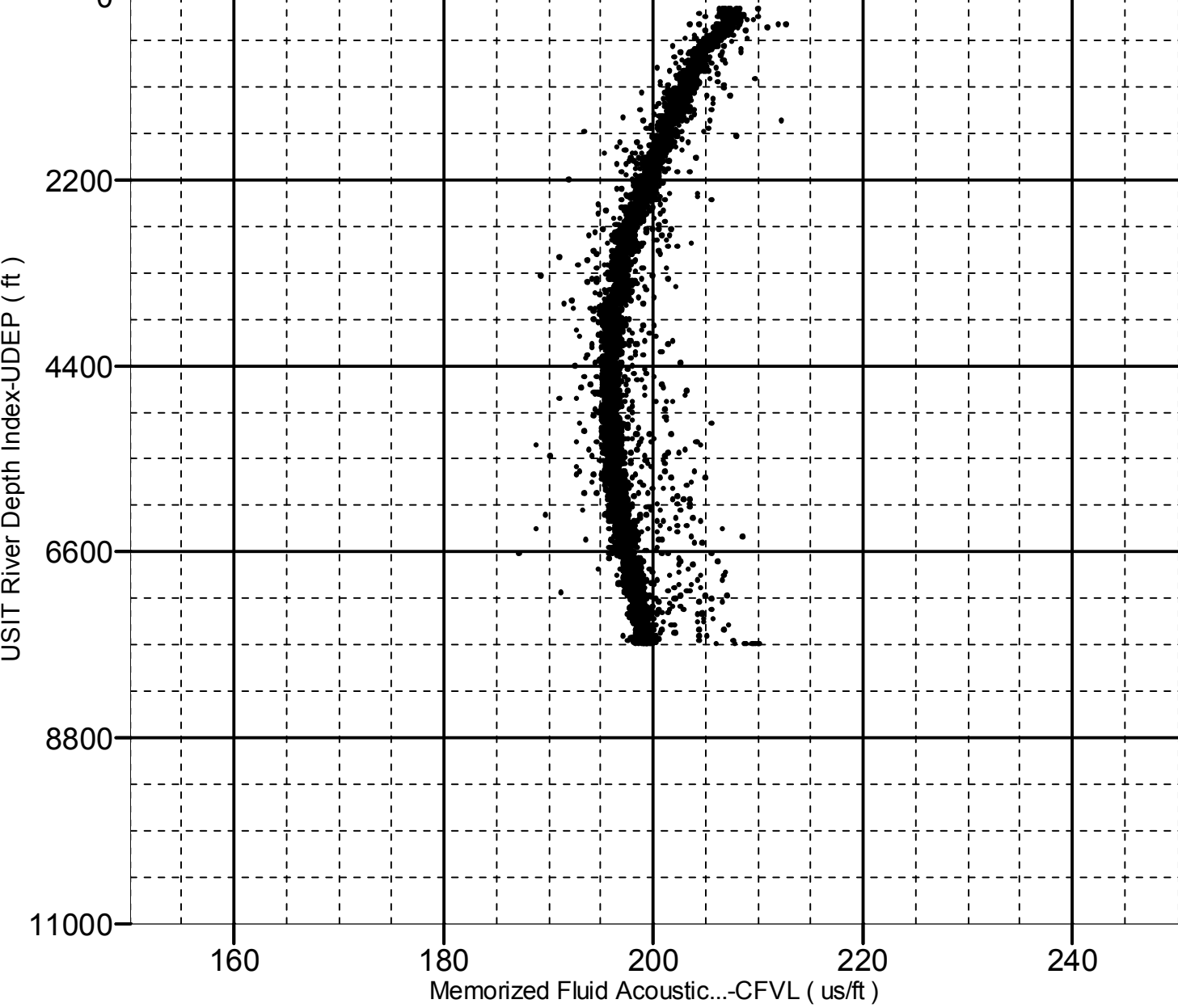
# Fluid Acoustic Slowness vs Depth

## 2D Cross Plot

Index Range: From 7690.25 to 168.00 ft

- CFVL-UDEP





XYZ

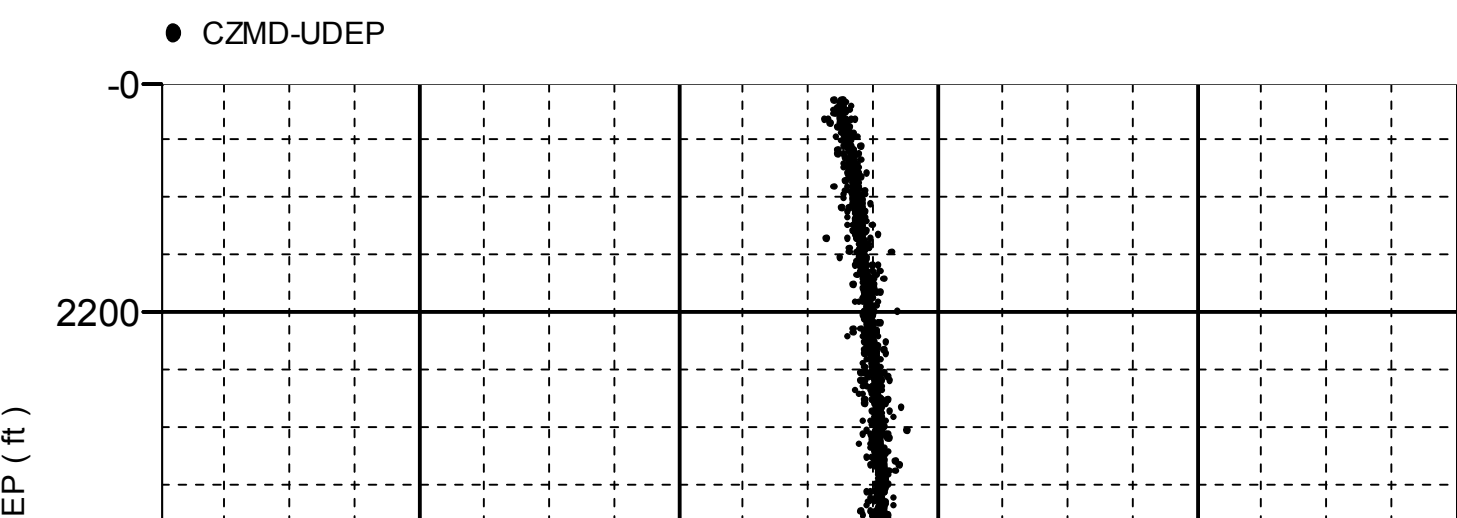
Company:Anadarko Petroleum Company Well:Green XX 8-4

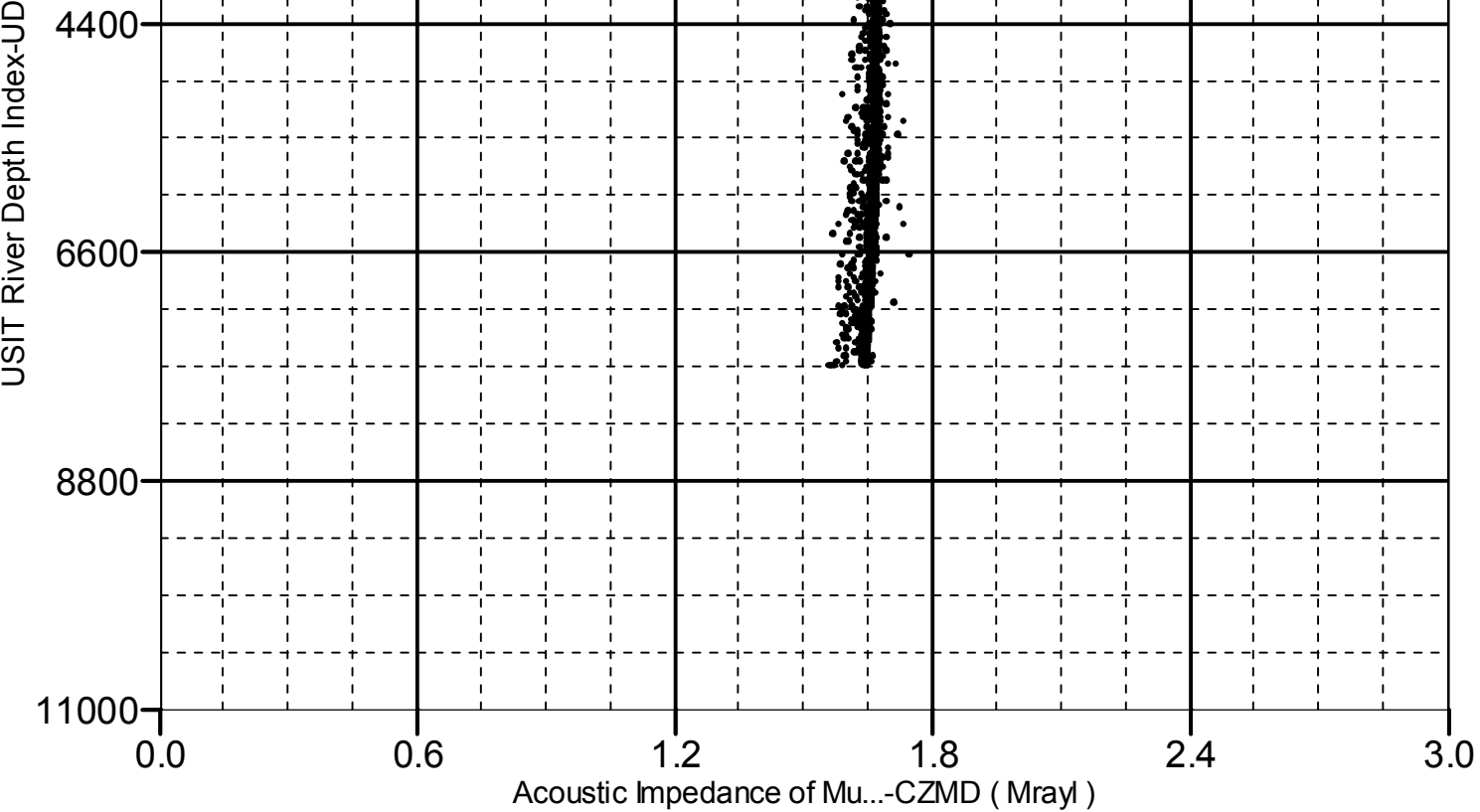
One: Main[3]:Up:S007

# Acoustic Impedance of Mud vs Depth

## 2D Cross Plot

Index Range: From 7690.25 to 168.00 ft





Company: Anadarko Petroleum Company

**Schlumberger**

Well: Green XX 8-4

Field: Wattenberg

County: Weld

Ultrasonic Imager

Cement Evaluation (Short)

Gamma Ray - CCL Log