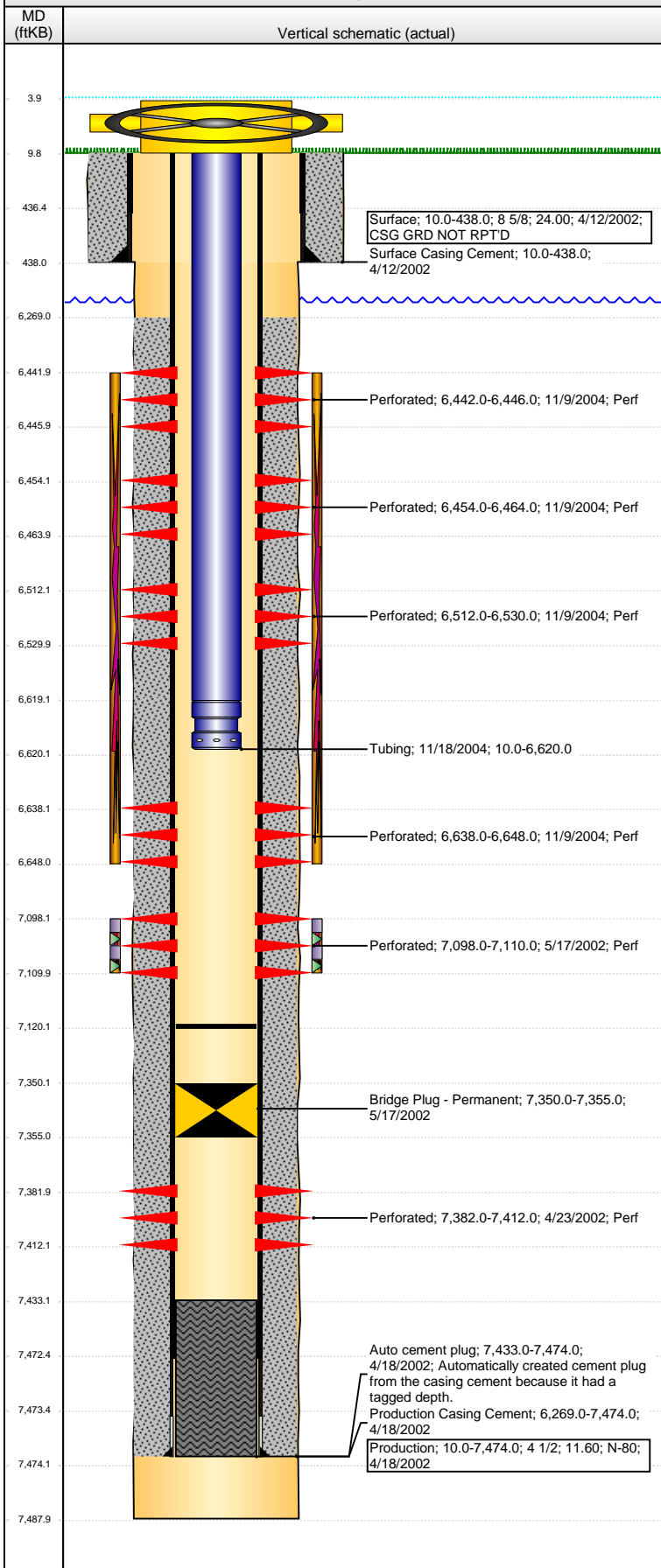


**Well Name: CERVI 13-15**

VERTICAL - ORIGINAL HOLE, 5/24/2016 11:31:10 AM



## Well Header

API 05-123-20816	Business Unit DJ BASIN	District 15	Well Config VERTICAL
Original KB Elevation (ft) 4,740	KB - GL / MSL (ftKB) 10.00	Spud Date 4/11/2002	P & A Date

## Comment

5/17/02 SET CIBP OVER DAKOTA PERFS, DAKOTA NEVER FRAC'D OR PRODUCED

11/18/04 DRILLED CIBP AND PUSHED PAST J SAND PERFS, EXACT TAG DEPTH NOT REPORTED

2/27/04 PLUNGER LIFT

Directions To Well

## Congressional Location

Quarter 1	Quarter 2	Quarter 3	Quarter 4	Section	Township	Twntshp N...	Range	Rng E/W Dir
		NW	SW	15	4	N	63	W

## Bottom Hole Location

North-South Distance (ft)	From N or S Line	East-West Distance (ft)	From E or W Line

## Plug Back Total Depths

Date	Depth (ftKB)	Method	Com
4/21/2002	7,433.0	CASED HOLE LOG	DEPTH LOGGER ON CBL
5/17/2002	7,350.0	TAG	CIBP W/ 1 SX SAND OVER DAKOTA
11/18/2004	7,120.0	TAG	DRILL CIBP AND PUSH PAST J SAND PERFS, DE...

## Wellbore Sections

Section Des	Size (in)	Act Top, MD (ftKB)	Act Btm, MD (ftKB)
SURFACE	12 1/4	10	438
PRODUCTION	7 7/8	438	7,488

## Zone Statuses

Zone Name	Status Date	Status	Fluid Type	Job	Prod Method
DAKOTA	5/17/2002	SI		DRILLING/CO...	
CODELL	11/22/2004	PR		RECOMPLETI...	
J SAND	6/27/2002	PR		DRILLING/CO...	
J SAND	11/22/2004	PR		RECOMPLETI...	
NIOBRARA	11/22/2004	PR		RECOMPLETI...	

## Casing Strings

### Surface, 438.0ftKB

Casing Description	Run Date	OD (in)	Wt/Len (l...	Grade	Top, MD (ft...	MD (ftKB)
Surface	4/12/2002	8 5/8	24.00		10.0	438.0

### Production, 7,474.0ftKB

Casing Description	Run Date	OD (in)	Wt/Len (l...	Grade	Top, MD (ft...	MD (ftKB)
Production	4/18/2002	4 1/2	11.60	N-80	10.0	7,474.0

## Cement

Description	Top Depth (ftKB)	Bottom Depth (ftKB)
Surface Casing Cement	10.0	438.0
Description	Top Depth (ftKB)	Bottom Depth (ftKB)
Production Casing Cement	6,269.0	7,474.0

## Tubing Strings

Tubing Description	Run Date	String...	ID (in)	Wt (lb/ft)	Grade	Len (ft)	Set De...
Tubing	11/18/2004	2 3/8	1.995	4.70	J-55	6,610.00	

## Tubing Components

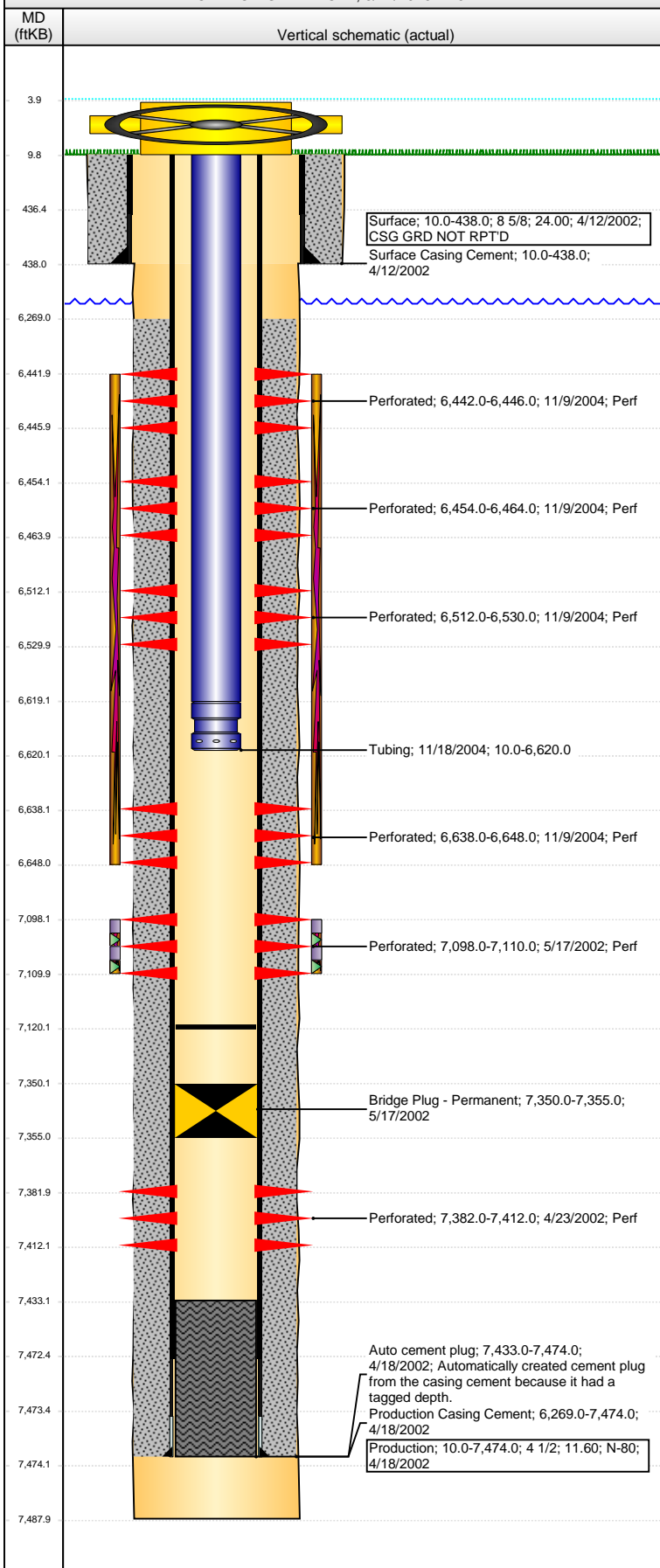
Item Des	OD (in)	Wt (lb/ft)	Grade	Jts	Len (ft)	Btm (ftKB)	Btm (TVD) (ftKB)
Tubing	2 3/8	4.70	J-55	209	6,609.00	6,619.0	
Pump Seating Nipple	2 3/8	1.10			1.00	6,620.0	

## Perforation Data

Zone	Bnch/St g	Entered Shot Total	Top (ftKB)	Btm (ftKB)	Date
NIOBRARA, ORIGINAL HOLE		8	6,442.00	6,446.00	11/9/2004
NIOBRARA, ORIGINAL HOLE		20	6,454.00	6,464.00	11/9/2004
NIOBRARA, ORIGINAL HOLE		36	6,512.00	6,530.00	11/9/2004
CODELL, ORIGINAL HOLE		40	6,638.00	6,648.00	11/9/2004
J SAND, ORIGINAL HOLE		48	7,098.00	7,110.00	5/17/2002
DAKOTA, ORIGINAL HOLE		120	7,382.00	7,412.00	4/23/2002

**Well Name: CERVI 13-15**

VERTICAL - ORIGINAL HOLE, 5/24/2016 11:31:12 AM



## Stimulations & Treatments

Date	6/3/2002	Zone	J SAND, ORIGINAL HOLE	Primary Job Type	DRILLING/COMPLETION - ORIGINAL	
Technical Result		Tech Result Details		Tech Result Note		
Comment						
Date	1/15/2004	Zone	J SAND, ORIGINAL HOLE	Primary Job Type	PLUNGER INSTALL	
Technical Result		Tech Result Details		Tech Result Note		
Comment						
10% HCL ACID JOB						
Date	11/10/2004	Zone	NIOBRARA-CODELL, ORIGINAL HOLE	Primary Job Type	RECOMPLETION	
Technical Result		Tech Result Details		Tech Result Note		
Comment						
LIMITED ENTRY FRAC						
Other In Hole						
Run Date	Des			OD (in)	Top (ftKB)	Btm (ftKB)
5/17/2002	Bridge Plug - Permanent			4	7,350.0	7,355.0
Logs						
Date	Type				Top, MD (ftKB)	Btm, MD (ftKB)
4/18/2002	COMPENSATED DENSITY				448.0	7,475.0
4/21/2002	CBL/CCL/GR				6,316.0	7,428.0