

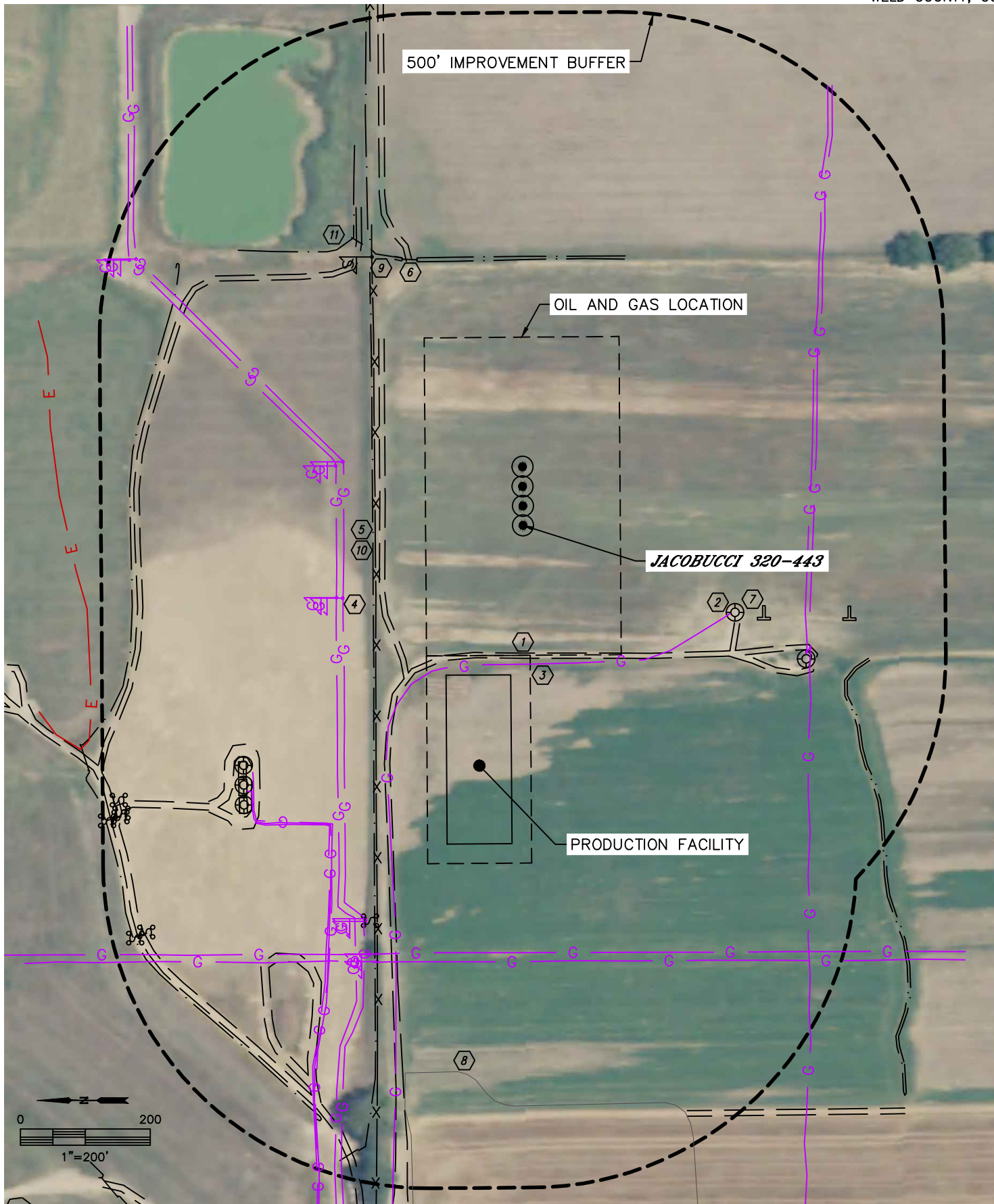


Lat40°, Inc. 6250 W. 10th Street, Unit 2, Greeley, CO 970-515-5294

LOCATION DRAWING

JACOBUCCI 1N67W320 PAD

SECTION: 32
TOWNSHIP: 1N
RANGE: 67W
6TH. P.M.
WELD COUNTY, CO





Lat40°, Inc. 6250 W. 10th Street, Unit 2, Greeley, CO 970-515-5294

LOCATION DRAWING

JACOBUCCI 1N67W32O PAD

SECTION: 32
TOWNSHIP: 1N
RANGE: 67W
6TH. P.M.
WELD COUNTY, CO

IMPROVEMENTS:
(MEASURED FROM THE PROPOSED JACOBUCCI 320-443 WELL LOCATION)

- ① NO BUILDING UNITS WITHIN 500' IMPROVEMENT BUFFER
- ② NO BUILDINGS WITHIN 500' IMPROVEMENT BUFFER
- ③ ROAD 197' W, 212' N, 359' & 937' SW, 443' & 472' NE, 537', 745' & 754' NW
- ④ EXISTING WELL HEAD 353' & 482' SW, 567', 587' & 608' NW
- ⑤ GAS LOCATE ±214' W (PDC), ±276' & ±287' N, ±546', ±548' & ±550' NW (ANADARKO), ±440' & ±447' S, ±479' SW (KPK), ±658' & ±670' W (SINCLAIR)
- ⑥ GAS MARKER 294', 303', 723' & 731' NE, 299', 308', 653', 656', 697' & 708' NW
- ⑦ FENCE 228' N, 753' NE
- ⑧ PIPE 440' NE, 994' NW
- ⑨ POST 398' & 523' SW, 653', 753', 761', 766', 786', 854' & 873' NW
- ⑩ EDGE OF EXISTING DRILL PAD 848' NW
- ⑪ SANITARY SEWER MARKER 474' NE
- ⑫ DITCH 231' & 605' N, 409' E, 550' SW
- ⑬ POND 512' NE