



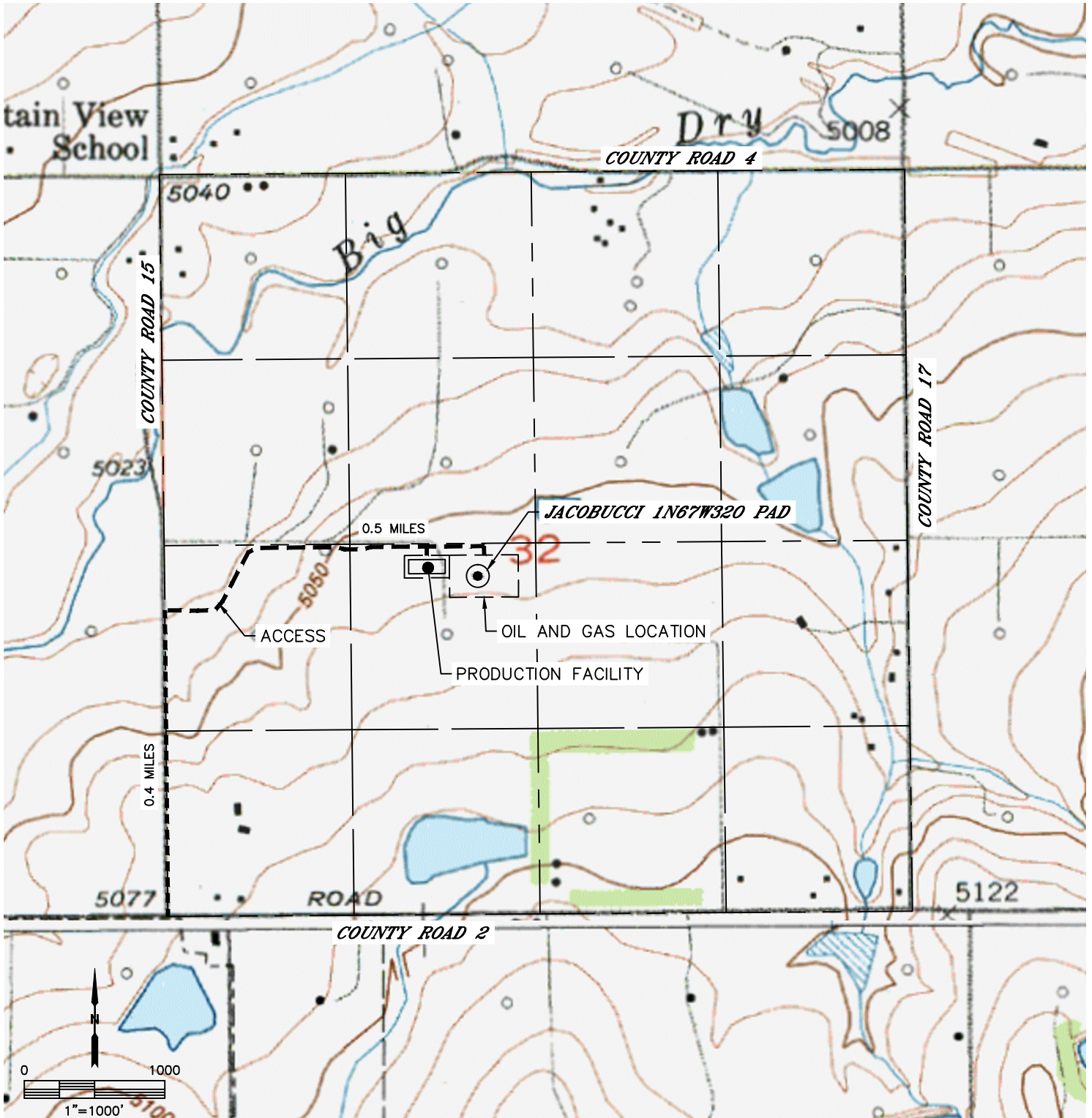
Lat40°, Inc. 6250 W. 10th Street, Unit 2, Greeley, CO 970-515-5294

# ACCESS ROAD MAP

JACOBUCCI 1N67W32O PAD

SECTION: 32  
TOWNSHIP: 1N  
RANGE: 67W  
6TH. P.M.  
WELD COUNTY, CO

DRIVING DIRECTIONS TO JACOBUCCI 1N67W32O PAD  
FROM THE INTERSECTION OF COUNTY ROAD 15 AND COUNTY ROAD 2, DRIVE NORTH ON COUNTY ROAD 15 FOR 0.4 MILES TO AN ACCESS ROAD TO THE EAST. FOLLOW ACCESS ROAD TO EAST FOR 0.5 MILES TO PROPOSED DRILL PAD.





Lat40°, Inc. 6250 W. 10th Street, Unit 2, Greeley, CO 970-515-5294

# ACCESS ROAD MAP

JACOBUCCI 1N67W320 PAD

SECTION: 32  
TOWNSHIP: 1N  
RANGE: 67W  
6TH. P.M.  
WELD COUNTY, CO

