

As Plugged to Abandon 4/12/16

LEASE Segelke
SW SW

Sec 30, T 6N, R 54W

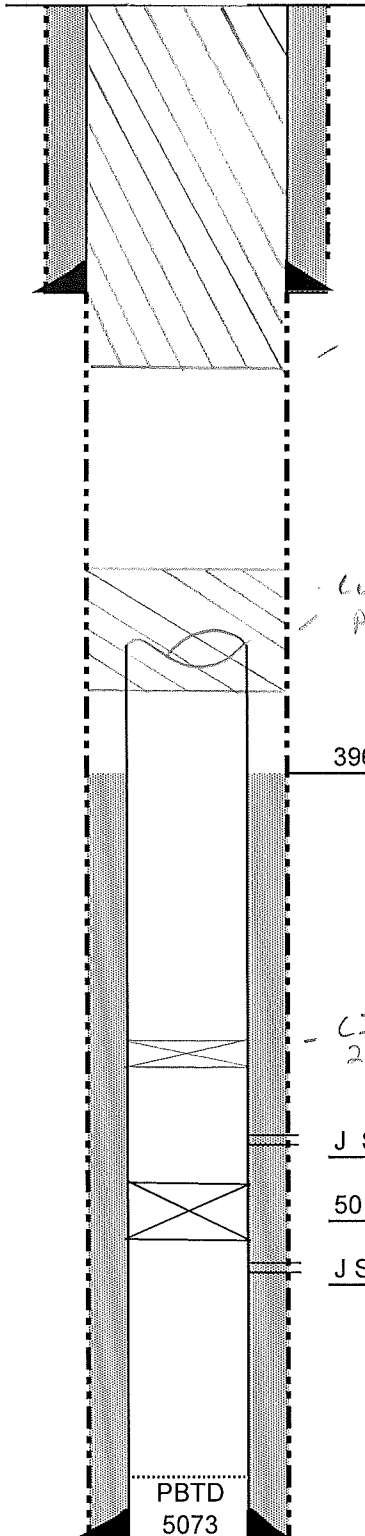
WELL NO. 1
Logan

API: 05- 075-05019
County, Colorado

- weld plate on top of
surface csg

SURFACE CASING

8-5/8" Surface Casing @ 113'
with 100 sacks
Top of Cement @ Circulated to Surface



Pump 50 SX C/T @ 160'

Tag C/T @ 127' - pump 40 SX C/T @ 127'

Pump 400' L 15 SX to fill to surface

- cut 5 1/2" csg @ 2008'

- Pump 40 SX C/T

3965' Top of Cement

- CIAP @ 4950'
2 SX C/T on top

J Sand 5002-06

5015' - Cement Retainer

J Sand 5020-26 (squeezed w/ 75 sacks)

PRODUCTION CASING

5-1/2" , 14 # Prod CSG @ 5,073'
with 150 sacks
TOP OF CEMENT @ 3,965'

TD: 5058