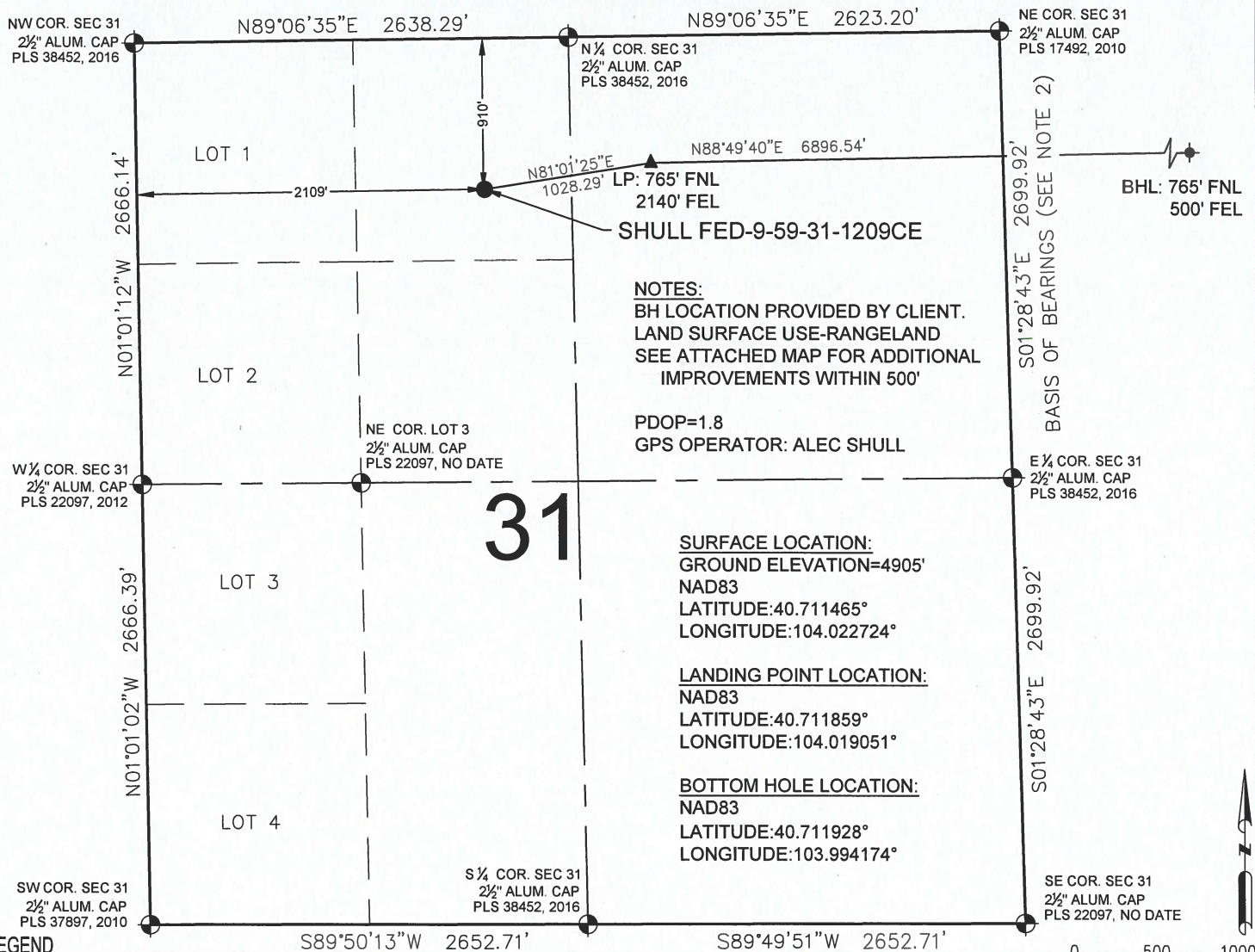
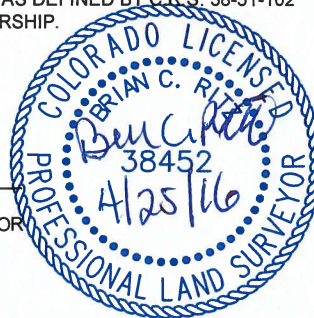


# SHULL FED-9-59-31-1209CE WELL LOCATION CERTIFICATE



I, BRIAN C. RITZ, A LICENSED PROFESSIONAL LAND SURVEYOR IN THE STATE OF COLORADO DO HEREBY CERTIFY TO **CRESCENT POINT ENERGY**, THAT THE SURVEY AND WELL LOCATION CERTIFICATE SHOWN HEREON WERE DONE BY ME OR UNDER MY DIRECT SUPERVISION AND THAT THE DRAWING SHOWN HEREON ACCURATELY DEPICTS THE PROPOSED LOCATION OF THE WELL. THIS CERTIFICATE DOES NOT REPRESENT A LAND SURVEY PLAT OR IMPROVEMENT SURVEY PLAT AS DEFINED BY C.R.S. 38-51-102 AND CANNOT BE RELIED UPON TO DETERMINE OWNERSHIP.



SHEET 1 OF 2

PREPARED BY:



FIELD DATE:

02-24-16

DRAWING DATE:

04-19-16

BY:

CHECKED BY:

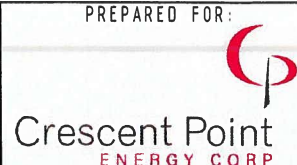
WELL NAME:

SHULL FED-9-59-31-1209CE

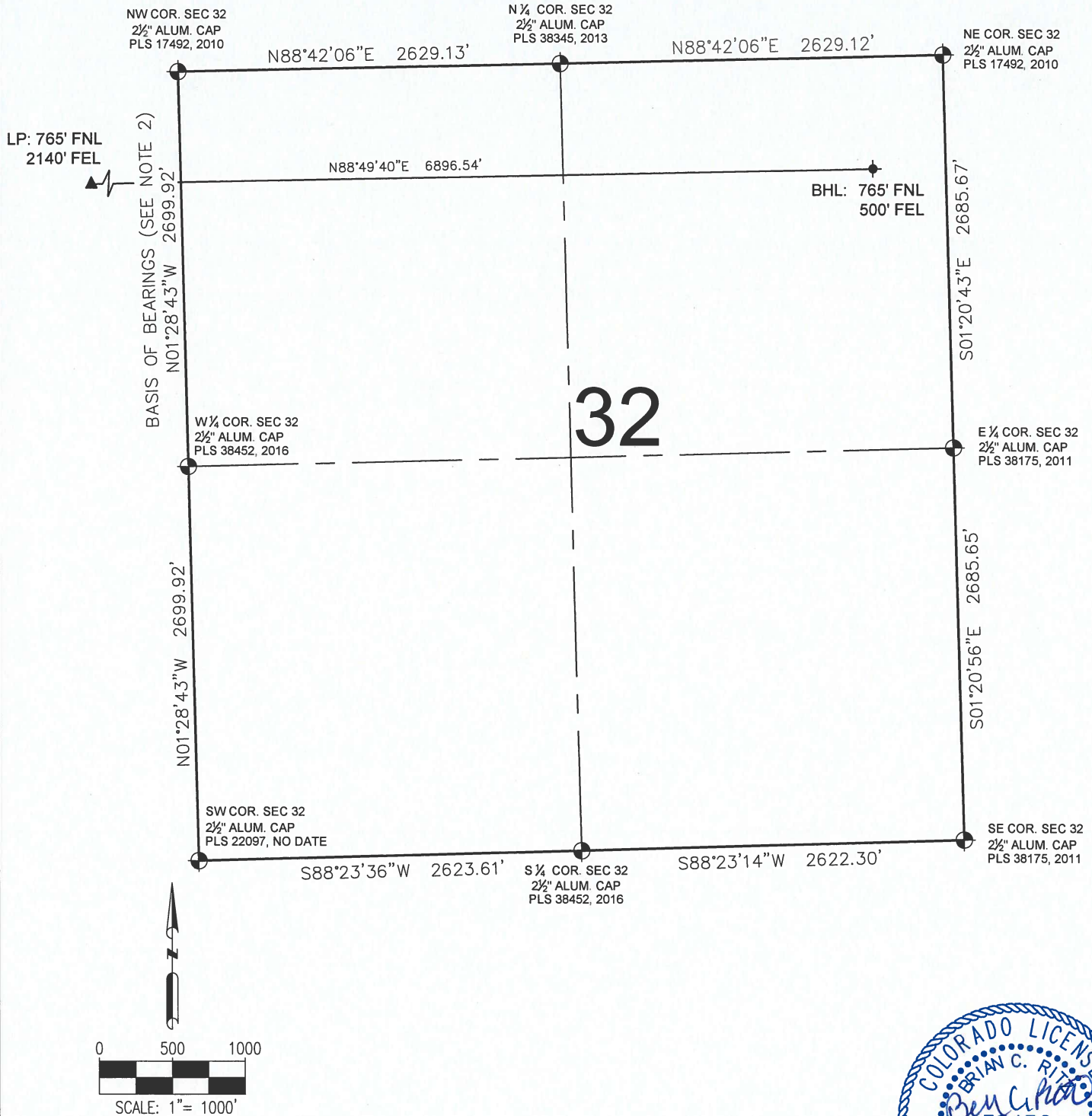
SURFACE LOCATION:

NE1/4 NW1/4 SEC. 31, T9N, R59W, 6TH P.M.  
WELD COUNTY, COLORADO

PREPARED FOR:



# SHULL FED-9-59-31-1209CE WELL LOCATION CERTIFICATE



## LEGEND

- ⊕ = EXISTING MONUMENT
- = CALCULATED POSITION
- = PROPOSED WELL
- ◆ = EXISTING WELL
- ⬤ = BOTTOM HOLE
- ▲ = LANDING POINT
- LP = LANDING POINT
- BHL = BOTTOM HOLE LOCATION

BRIAN C. RITZ, PLS 38452  
COLORADO LICENSED PROFESSIONAL LAND SURVEYOR  
FOR AND ON BEHALF OF P.F.S., LLC



SHEET 2 OF 2

PREPARED BY:



FIELD DATE:  
02-24-16

DRAWING DATE:  
04-19-16

BY:  
TJN

CHECKED BY:  
KAD

WELL NAME:

SHULL FED-9-59-31-1209CE

SURFACE LOCATION:

NE1/4 NW1/4 SEC. 31, T9N, R59W, 6TH P.M.  
WELD COUNTY, COLORADO

PREPARED FOR:

