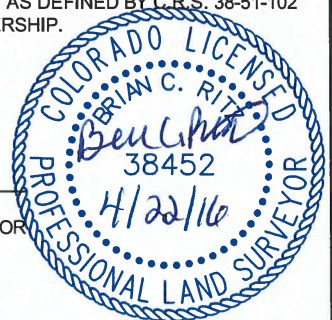
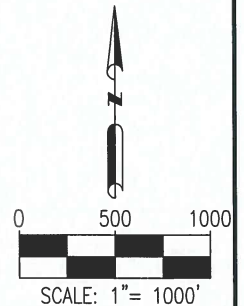
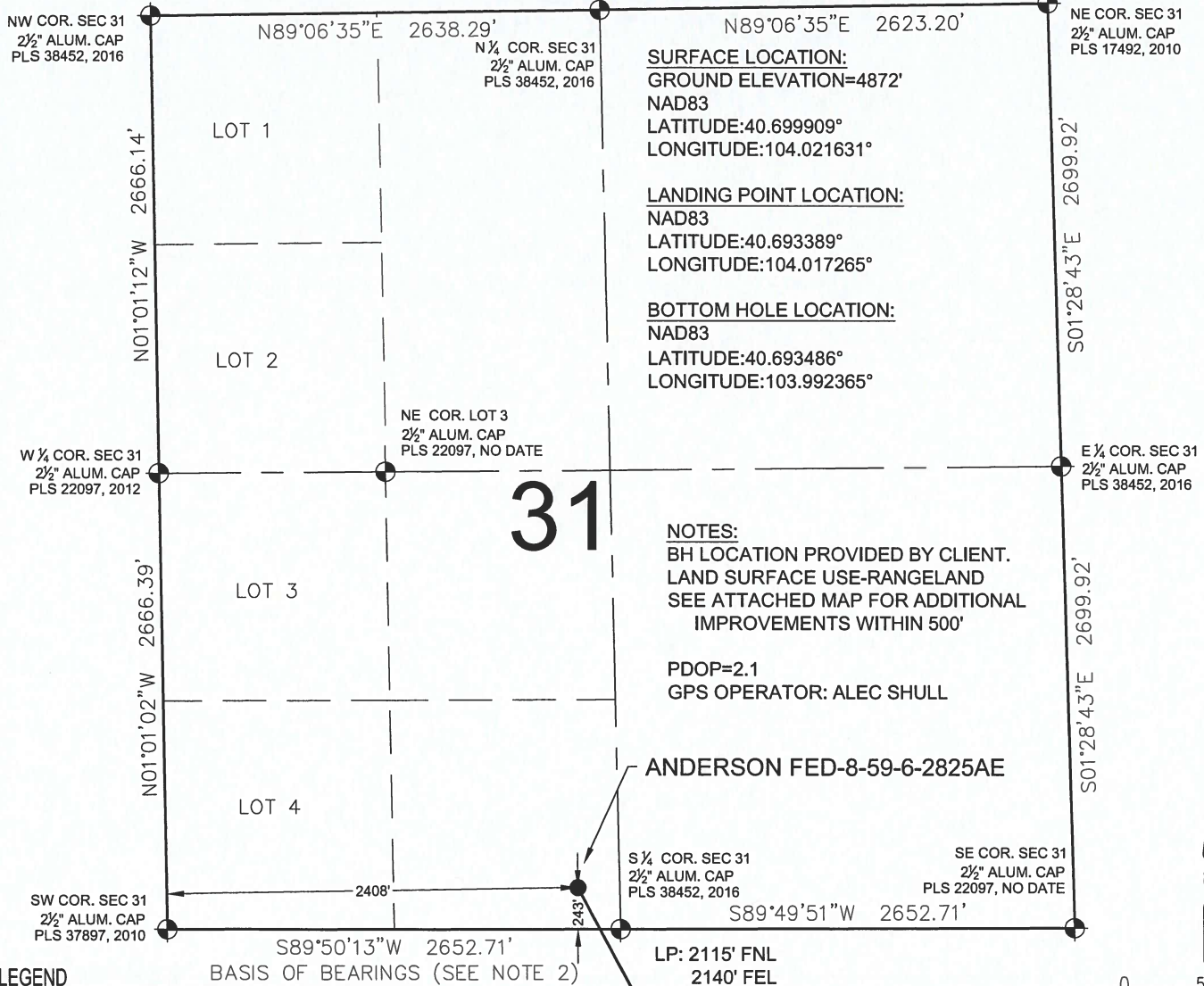


ANDERSON FED-8-59-6-2825AE WELL LOCATION CERTIFICATE

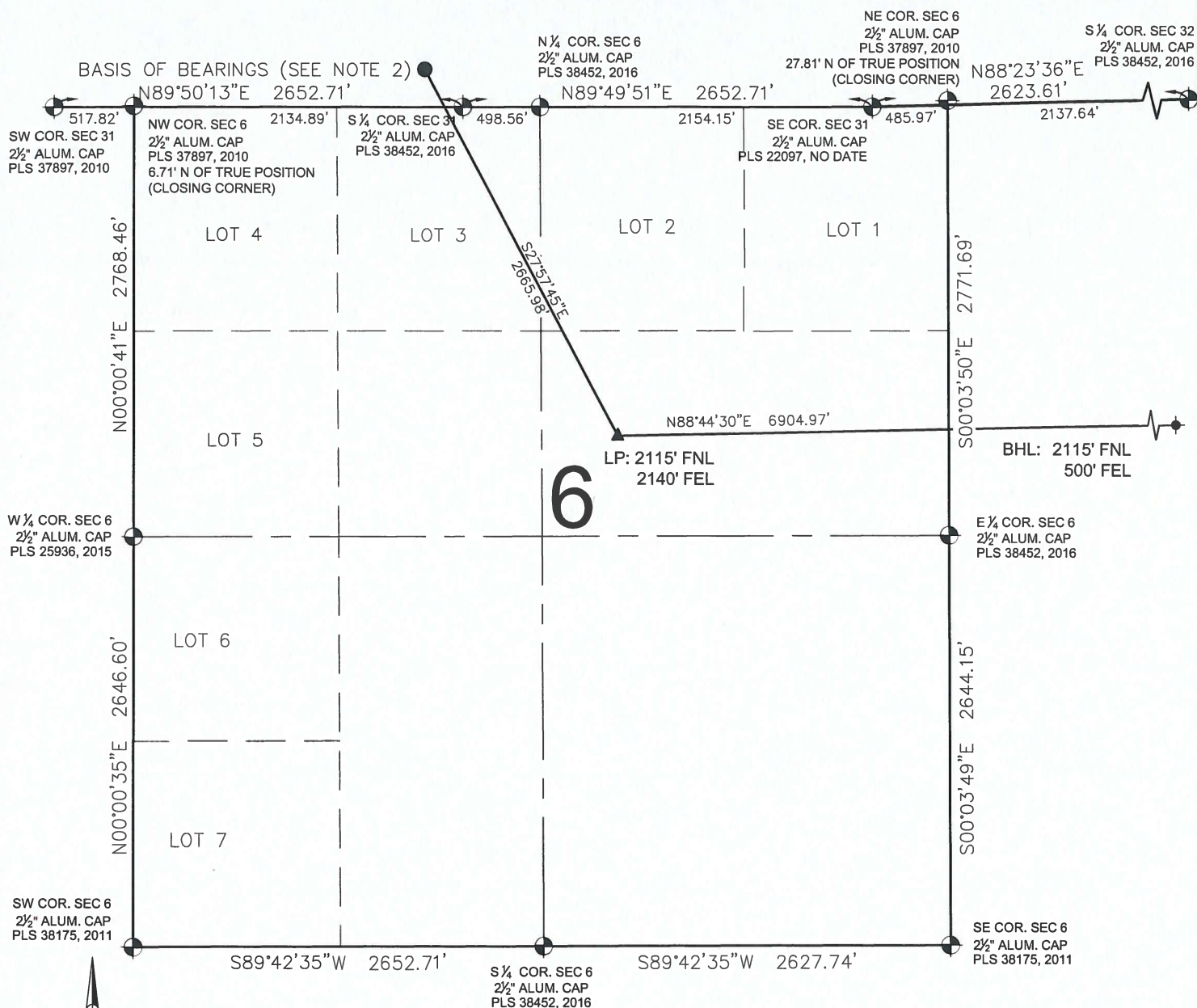


I, BRIAN C. RITZ, A LICENSED PROFESSIONAL LAND SURVEYOR IN THE STATE OF COLORADO DO HEREBY CERTIFY TO **CRESCENT POINT ENERGY**, THAT THE SURVEY AND WELL LOCATION CERTIFICATE SHOWN HEREON WERE DONE BY ME OR UNDER MY DIRECT SUPERVISION AND THAT THE DRAWING SHOWN HEREON ACCURATELY DEPICTS THE PROPOSED LOCATION OF THE WELL. THIS CERTIFICATE DOES NOT REPRESENT A LAND SURVEY PLAT OR IMPROVEMENT SURVEY PLAT AS DEFINED BY C.R.S. 38-51-102 AND CANNOT BE RELIED UPON TO DETERMINE OWNERSHIP.







BRIAN C. RITZ, PLS 38452
COLORADO LICENSED PROFESSIONAL LAND SURVEYOR
FOR AND ON BEHALF OF P.F.S., LLC

SHEET 1 OF 3

ANDERSON FED-8-59-6-2825AE
WELL LOCATION CERTIFICATE



LEGEND

-  = EXISTING MONUMENT  = BOTTOM HOLE
 = CALCULATED POSITION  = LANDING POINT
 = PROPOSED WELL LP = LANDING POINT
 = EXISTING WELL BHL = BOTTOM HOLE LOCATION

BRIAN C. RITZ, PLS 38452
COLORADO LICENSED PROFESSIONAL LAND SURVEYOR
FOR AND ON BEHALF OF P.F.S., LLC



SHEET 2 OF 3

PREPARED BY:



FIELD DATE:

02-24-16

DRAWING DATE:
04-19-16

BY:
KAD

CHECKED BY:
MLP

WELL NAME:

ANDERSON FED-8-59-6-2825AE

SURFACE LOCATION:

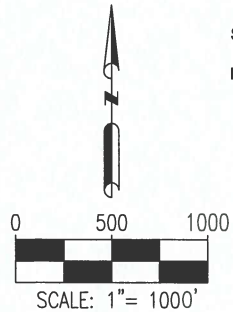
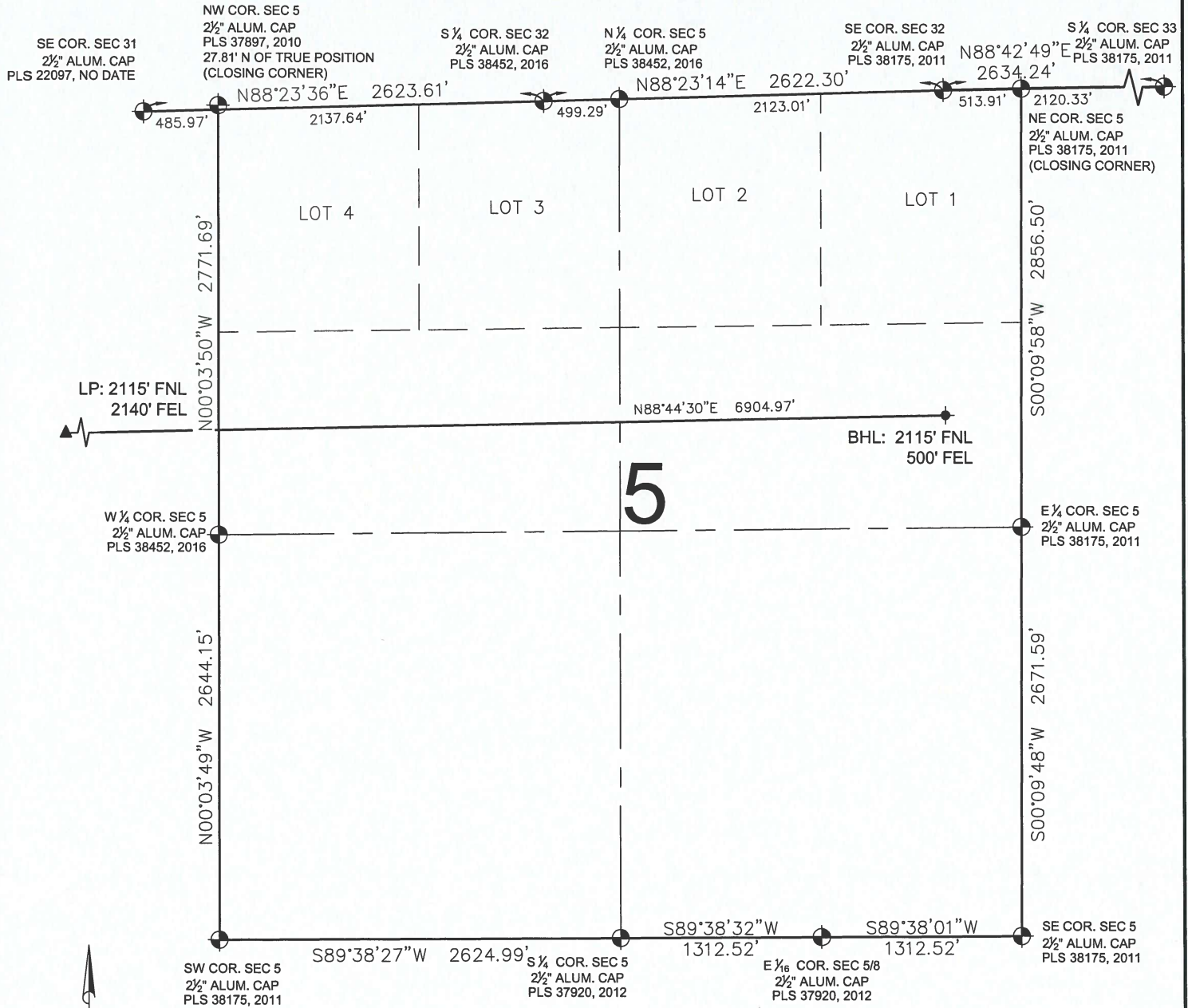
SE1/4 SW1/4 SEC. 31, T9N, R59W, 6TH P.M.

WELD COUNTY, COLORADO

PREPARED FOR:



ANDERSON FED-8-59-6-2825AE WELL LOCATION CERTIFICATE





LEGEND

- ⊕ = EXISTING MONUMENT
- = CALCULATED POSITION
- = PROPOSED WELL
- ◆ = EXISTING WELL
- ⬮ = BOTTOM HOLE
- ▲ = LANDING POINT
- LP = LANDING POINT
- BHL = BOTTOM HOLE LOCATION

BRIAN C. RITZ, PLS 38452
COLORADO LICENSED PROFESSIONAL LAND SURVEYOR
FOR AND ON BEHALF OF P.F.S., LLC



SHEET 3 OF 3

PREPARED BY:  PFS Petroleum Field Services, LLC 7535 Hilltop Circle Denver, CO 80221	FIELD DATE: 02-24-16 DRAWING DATE: 04-19-16 BY: KAD CHECKED BY: MLP	WELL NAME: ANDERSON FED-8-59-6-2825AE SURFACE LOCATION: SE1/4 SW1/4 SEC. 31, T9N, R59W, 6TH P.M. WELD COUNTY, COLORADO	PREPARED FOR:  Crescent Point ENERGY CORP
--	--	---	--