

# ANDERSON FED-8-59-6-2124CE2 WELL LOCATION CERTIFICATE

NW COR. SEC 31  
2 1/2" ALUM. CAP  
PLS 38452, 2016

N89°06'35"E 2638.29'

N 1/4 COR. SEC 31  
2 1/2" ALUM. CAP  
PLS 38452, 2016

N89°06'35"E 2623.20'

NE COR. SEC 31  
2 1/2" ALUM. CAP  
PLS 17492, 2010

N01°01'12"W 2666.14'

LOT 1

**SURFACE LOCATION:**  
GROUND ELEVATION=4872'  
NAD83  
LATITUDE:40.699977°  
LONGITUDE:104.021629°

**LANDING POINT LOCATION:**  
NAD83  
LATITUDE:40.693801°  
LONGITUDE:104.017256°

**BOTTOM HOLE LOCATION:**  
NAD83  
LATITUDE:40.693898°  
LONGITUDE:103.992354°

LOT 2

NE COR. LOT 3  
2 1/2" ALUM. CAP  
PLS 22097, NO DATE

# 31

**NOTES:**  
BH LOCATION PROVIDED BY CLIENT.  
LAND SURFACE USE-RANGELAND  
SEE ATTACHED MAP FOR ADDITIONAL  
IMPROVEMENTS WITHIN 500'

PDOP=2.1  
GPS OPERATOR: ALEC SHULL

ANDERSON FED-8-59-6-2124CE2

W 1/4 COR. SEC 31  
2 1/2" ALUM. CAP  
PLS 22097, 2012

LOT 3

N01°01'02"W 2666.39'

LOT 4

SW COR. SEC 31  
2 1/2" ALUM. CAP  
PLS 37897, 2010

S89°50'13"W 2652.71'

S 1/4 COR. SEC 31  
2 1/2" ALUM. CAP  
PLS 38452, 2016

SE COR. SEC 31  
2 1/2" ALUM. CAP  
PLS 22097, NO DATE

S89°49'51"W 2652.71'

LP: 1965' FNL  
2140' FEL

## LEGEND

- = EXISTING MONUMENT    ◆ = BOTTOM HOLE  
○ = CALCULATED POSITION    ▲ = LANDING POINT  
● = PROPOSED WELL    LP = LANDING POINT  
◆ = EXISTING WELL    BHL = BOTTOM HOLE LOCATION

## WELL ANDERSON FED-8-59-6-2124CE2 TO BE LOCATED 268' FSL & 2408' FWL

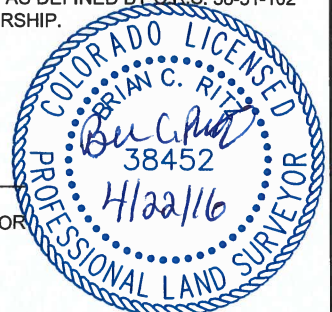
### NOTES:

- THIS FIELD SURVEY CONFORMS TO THE MINIMUM STANDARDS SET BY THE C.O.G.C.C., RULE NO. 215
- BEARINGS ARE BASED ON THE ASSUMPTION THAT THE SOUTH LINE OF THE SOUTHWEST QUARTER OF SECTION 31, BEARS S89°50'13"W BETWEEN THE MONUMENTS SHOWN HEREON.
- GRID DISTANCES ARE SHOWN, AS GPS MEASURED IN THE FIELD, WITH TIES TO WELLS MEASURED PERPENDICULAR TO SECTION LINES. TO GET GROUND DISTANCES MULTIPLY THE SHOWN DISTANCE BY 1.000240741.
- ELEVATIONS SHOWN ARE NAVD 88, AS DERIVED BY GPS OBSERVATIONS.
- FIELD VERIFICATION OF MONUMENTS COMPLETED WITHIN 1 YEAR OF SIGNATURE DATE.

NOTICE: ACCORDING TO COLORADO LAW YOU MUST COMMENCE ANY LEGAL ACTION BASED UPON ANY DEFECT IN THIS SURVEY WITHIN THREE YEARS AFTER YOU FIRST DISCOVER SUCH DEFECT. IN NO EVENT MAY ANY ACTION BASED UPON ANY DEFECT IN THIS SURVEY BE COMMENCED MORE THAN TEN YEARS FROM THIS SAID DATE OF THIS CERTIFICATION SHOWN HEREON.

I, BRIAN C. RITZ, A LICENSED PROFESSIONAL LAND SURVEYOR IN THE STATE OF COLORADO DO HEREBY CERTIFY TO **CRESCENT POINT ENERGY**, THAT THE SURVEY AND WELL LOCATION CERTIFICATE SHOWN HEREON WERE DONE BY ME OR UNDER MY DIRECT SUPERVISION AND THAT THE DRAWING SHOWN HEREON ACCURATELY DEPICTS THE PROPOSED LOCATION OF THE WELL. THIS CERTIFICATE DOES NOT REPRESENT A LAND SURVEY PLAT OR IMPROVEMENT SURVEY PLAT AS DEFINED BY C.R.S. 38-51-102 AND CANNOT BE RELIED UPON TO DETERMINE OWNERSHIP.

BRIAN C. RITZ, PLS 38452  
COLORADO LICENSED PROFESSIONAL LAND SURVEYOR  
FOR AND ON BEHALF OF P.F.S., LLC



SHEET 1 OF 3

PREPARED BY:



FIELD DATE:

02-24-16

WELL NAME:

ANDERSON FED-8-59-6-2124CE2

DRAWING DATE:

04-19-16

SURFACE LOCATION:

SE1/4 SW1/4 SEC. 31, T9N, R59W, 6TH P.M.

BY:

KAD

CHECKED BY:

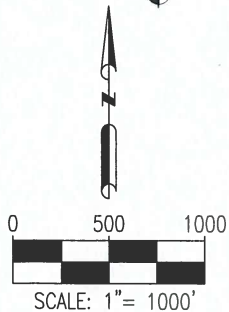
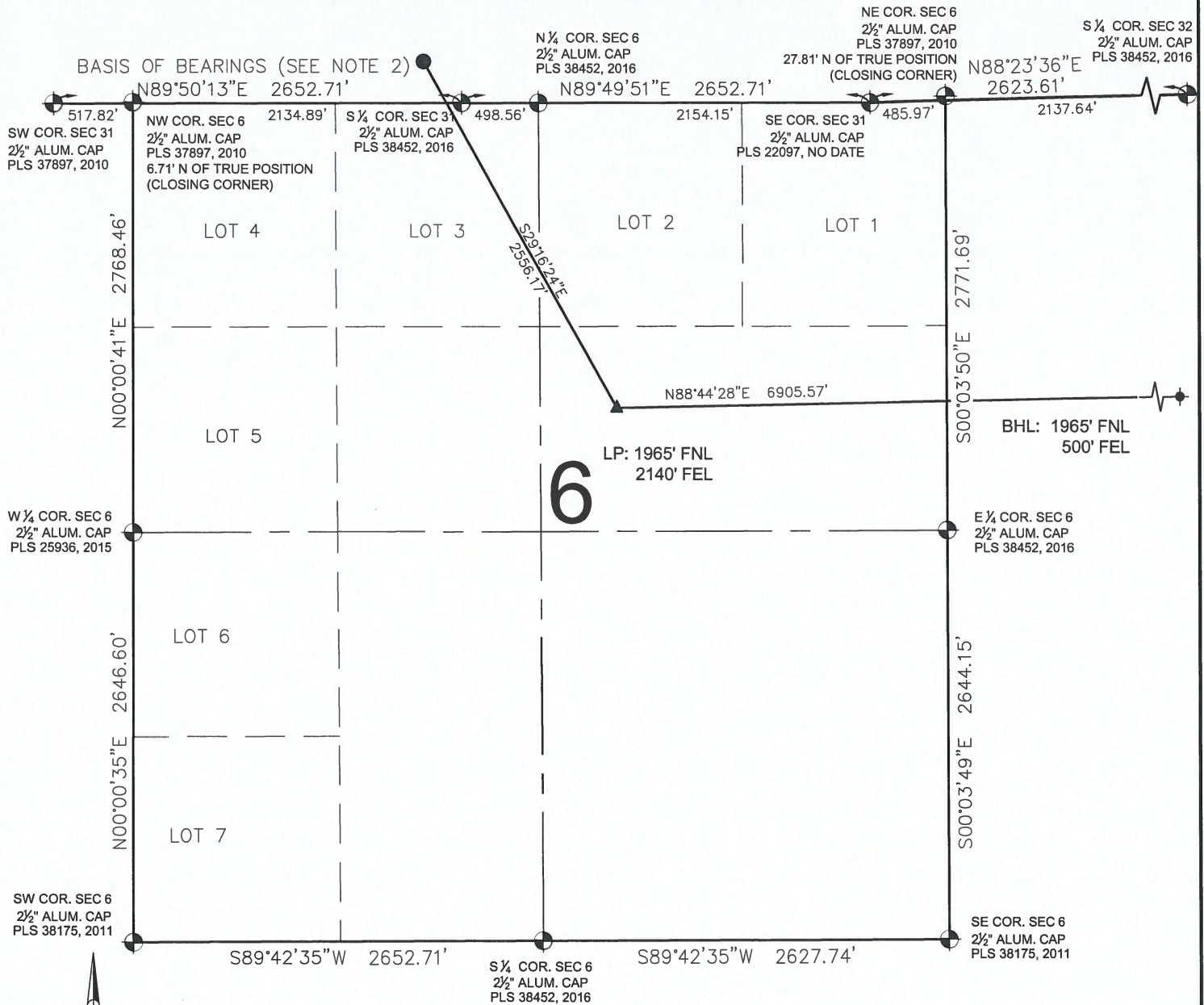
MLP

WELD COUNTY, COLORADO

PREPARED FOR:



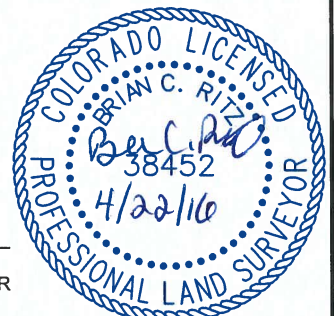
# ANDERSON FED-8-59-6-2124CE2 WELL LOCATION CERTIFICATE



## LEGEND

- ⊕ = EXISTING MONUMENT
- = CALCULATED POSITION
- = PROPOSED WELL
- ◆ = EXISTING WELL
- ⬮ = BOTTOM HOLE
- ▲ = LANDING POINT
- LP = LANDING POINT
- BHL = BOTTOM HOLE LOCATION

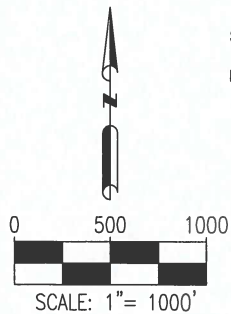
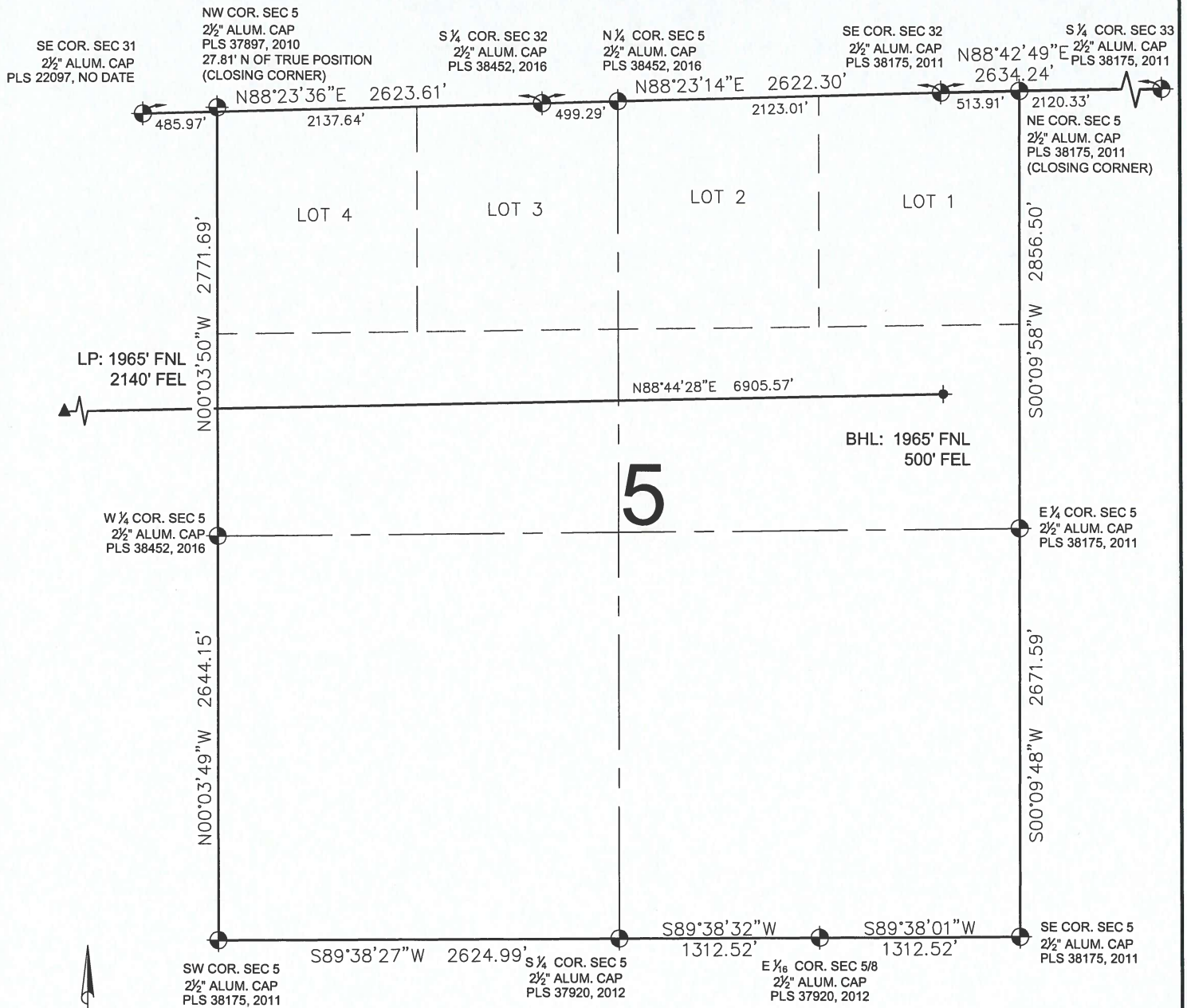
BRIAN C. RITZ, PLS 38452  
COLORADO LICENSED PROFESSIONAL LAND SURVEYOR  
FOR AND ON BEHALF OF P.F.S., LLC



SHEET 2 OF 3

<b>PREPARED BY:</b>  <b>PFS</b> Petroleum Field Services, LLC 7535 Hilltop Circle Denver, CO 80221	<b>FIELD DATE:</b> 02-24-16	<b>WELL NAME:</b> ANDERSON FED-8-59-6-2124CE2	<b>PREPARED FOR:</b>  <b>Crescent Point</b> ENERGY CORP
	<b>DRAWING DATE:</b> 04-19-16	<b>SURFACE LOCATION:</b> SE1/4 SW1/4 SEC. 31, T9N, R59W, 6TH P.M. WELD COUNTY, COLORADO	
	<b>BY:</b> KAD	<b>CHECKED BY:</b> MLP	

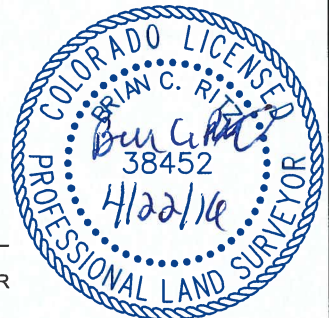
# ANDERSON FED-8-59-6-2124CE2 WELL LOCATION CERTIFICATE



## LEGEND

- ⊕ = EXISTING MONUMENT
- = CALCULATED POSITION
- = PROPOSED WELL
- ◆ = EXISTING WELL
- ⬮ = BOTTOM HOLE
- ▲ = LANDING POINT
- LP = LANDING POINT
- BHL = BOTTOM HOLE LOCATION

BRIAN C. RITZ, PLS 38452  
COLORADO LICENSED PROFESSIONAL LAND SURVEYOR  
FOR AND ON BEHALF OF P.F.S., LLC



SHEET 3 OF 3

PREPARED BY:



FIELD DATE:  
02-24-16

DRAWING DATE:  
04-19-16

BY:  
KAD

CHECKED BY:  
MLP

WELL NAME:

ANDERSON FED-8-59-6-2124CE2

SURFACE LOCATION:

SE1/4 SW1/4 SEC. 31, T9N, R59W, 6TH P.M.  
WELD COUNTY, COLORADO

PREPARED FOR:

