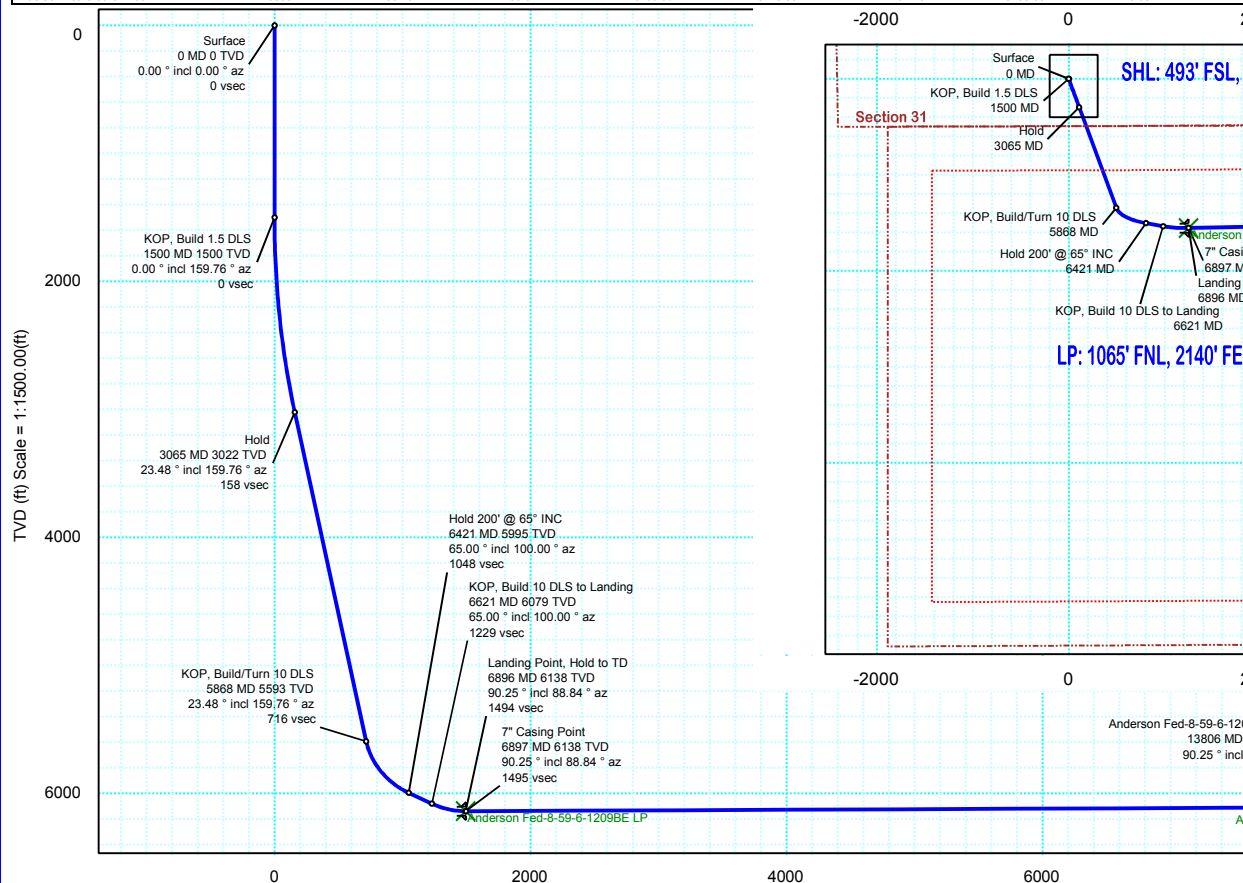


Borehole:	Well:	Field:	Structure:
Original Hole	Anderson Fed-8-59-6-1209BE	CO, Weld County (NAD 83 NZ)	31-09N-59W (Anderson-Shull Pad 4)

Gravity & Magnetic Parameters					Surface Location				NAD83 Colorado State Plane, Northern Zone, US Feet				Miscellaneous			
Model:	HDGM 2015	Dip:	67.139°	Date:	13-Apr-2016	Lat:	N 40 42 2.14	Northing:	1501487.26fUS	Grid Conv:	0.9552°	Slot:	Anderson Fed-8-59-6-1209BE	TVD Ref:	KB 18ft(4893ft above MSL)	
MagDec:	8.048°	FS:	52754.373nT	Gravity FS:	999.082mgn (9.80665 Based)	Lon:	W 104 1 17.82	Easting:	3409900.66fUS	Scale Fact:	0.99998762	Plan:	Anderson Fed-8-59-6-1209BE R0 mdv 13Apr16			

Northing: 1501487.255		Easting: 3409900.658		Latitude: N 40 42 2.14		Longitude: W 104 1 17.82		VSec Azimuth: 99.756	
Target Description		Grid Coord		Local Coord					
Target Name	Latitude	Longitude	Northing	Easting	TVD	VSec	N(+)S(-)	E(+)W(-)	DLS
Anderson-Shull Pad Sec 5-8N-59W	N 40 42 41.43	W 104 1 22.06	1505457.62	3409507.95	4893.00	-1059.84	3970.42	-392.72	0.00
Anderson-Shull Pad Sec 6-8N-59W	N 40 42 41.43	W 104 1 22.06	1505457.62	3409507.95	4893.00	-1059.84	3970.42	-392.72	0.00
Anderson-Shull Pad Sec 5-6 460' Setback	N 40 42 41.43	W 104 1 22.06	1505457.62	3409507.95	4893.00	-1059.84	3970.42	-392.72	0.00
Pad 4	N 40 42 41.43	W 104 1 22.06	1505457.62	3409507.95	4893.00	-1059.84	3970.42	-392.72	0.00
Anderson-Shull Pad Sec 31-9N-59W	N 40 42 41.43	W 104 1 22.06	1505457.62	3409507.95	4893.00	-1059.84	3970.42	-392.72	0.00
Anderson Fed-8-59-6-1209BE BHL	N 40 41 46.93	W 103 59 32.24	1500084.81	34118057.20	6108.00	8276.35	-1402.46	8156.66	9.98
Anderson Fed-8-59-6-1209BE LP	N 40 41 46.58	W 104 1 1.94	1499932.61	3411149.47	6138.00	1494.21	-1554.66	1248.83	0.00

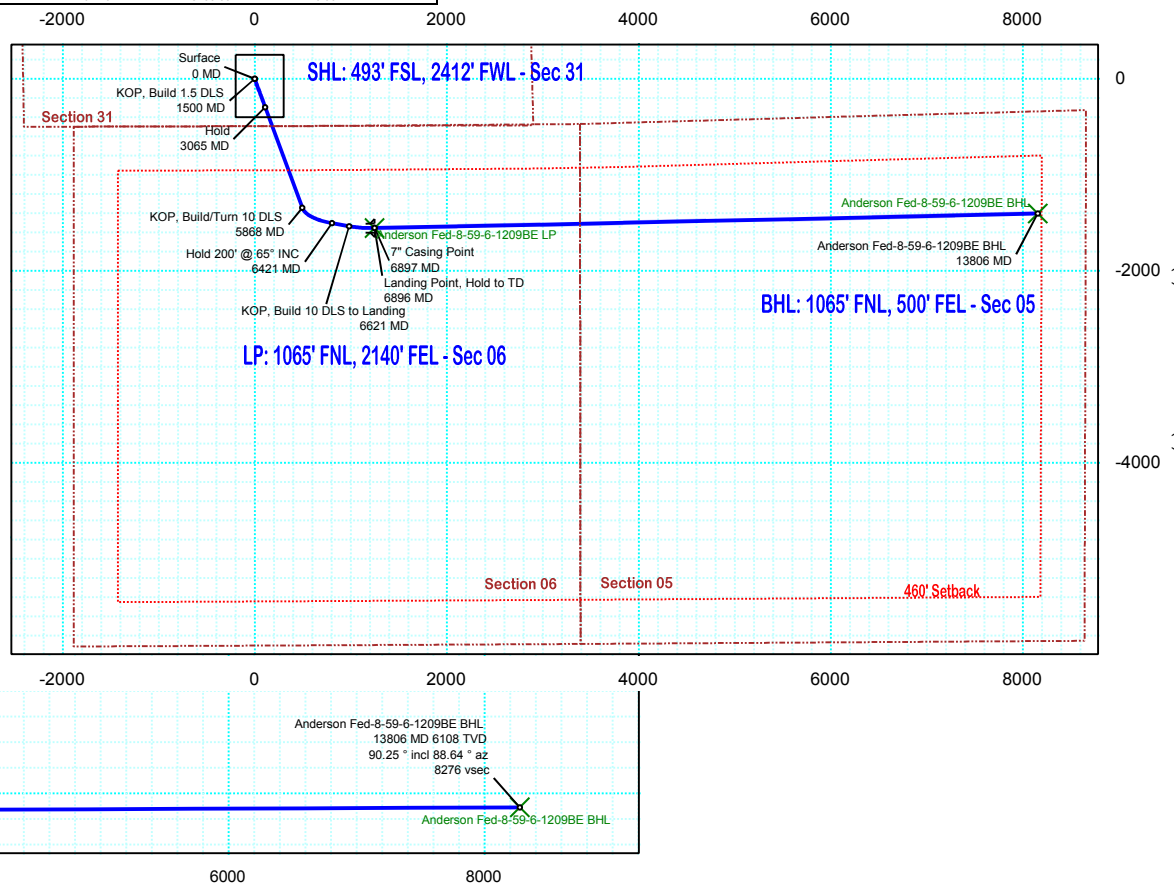


**Proposal
Rev 0**



Grid North
Tot Corr (M->G 7.093°)
Mag Dec (8.048°)
Grid Conv (0.955°)

EW (ft) Scale = 1:2000.00(ft)



Vertical Section (ft) Azim = 99.756° Scale = 1:1500.00(ft) Origin = 0N/-S, 0E/-W