

ANDERSON FED-8-59-6-2124CE WELL LOCATION CERTIFICATE

NW COR. SEC 31
2 1/2" ALUM. CAP
PLS 38452, 2016

N89°06'35"E 2638.29'

N 1/4 COR. SEC 31
2 1/2" ALUM. CAP
PLS 38452, 2016

N89°06'35"E 2623.20'

NE COR. SEC 31
2 1/2" ALUM. CAP
PLS 17492, 2010

N01°01'12"W 2666.14'

LOT 1

SURFACE LOCATION:
GROUND ELEVATION=4872'
NAD83
LATITUDE:40.700183°
LONGITUDE:104.021625°

LANDING POINT LOCATION:
NAD83
LATITUDE:40.695447°
LONGITUDE:104.017223°

BOTTOM HOLE LOCATION:
NAD83
LATITUDE:40.695545°
LONGITUDE:103.992311°

LOT 2

NE COR. LOT 3
2 1/2" ALUM. CAP
PLS 22097, NO DATE

W 1/4 COR. SEC 31
2 1/2" ALUM. CAP
PLS 22097, 2012

LOT 3

N01°01'02"W 2666.39'

31

NOTES:
BH LOCATION PROVIDED BY CLIENT.
LAND SURFACE USE-RANGELAND
SEE ATTACHED MAP FOR ADDITIONAL
IMPROVEMENTS WITHIN 500'

PDOP=2.1
GPS OPERATOR: ALEC SHULL

ANDERSON FED-8-59-6-2124CE

SW COR. SEC 31
2 1/2" ALUM. CAP
PLS 37897, 2010

S89°50'13"W 2652.71'
BASIS OF BEARINGS (SEE NOTE 2)

S 1/4 COR. SEC 31
2 1/2" ALUM. CAP
PLS 38452, 2016

SE COR. SEC 31
2 1/2" ALUM. CAP
PLS 22097, NO DATE

LP: 1365' FNL
2140' FEL

LEGEND

- = EXISTING MONUMENT
- = CALCULATED POSITION
- = PROPOSED WELL
- ◆ = EXISTING WELL
- ◆ = BOTTOM HOLE
- ▲ = LANDING POINT
- LP = LANDING POINT
- BHL = BOTTOM HOLE LOCATION

**WELL ANDERSON FED-8-59-6-2124CE
TO BE LOCATED 343' FSL & 2409' FWL**

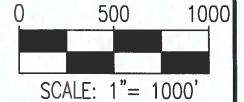
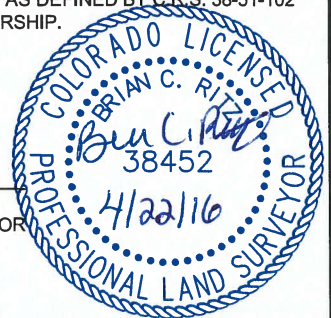
NOTES:

- THIS FIELD SURVEY CONFORMS TO THE MINIMUM STANDARDS SET BY THE C.O.G.C.C., RULE NO. 215
- BEARINGS ARE BASED ON THE ASSUMPTION THAT THE SOUTH LINE OF THE SOUTHWEST QUARTER OF SECTION 31, BEARS S89°50'13"W BETWEEN THE MONUMENTS SHOWN HEREON.
- GRID DISTANCES ARE SHOWN, AS GPS MEASURED IN THE FIELD, WITH TIES TO WELLS MEASURED PERPENDICULAR TO SECTION LINES. TO GET GROUND DISTANCES MULTIPLY THE SHOWN DISTANCE BY 1.000240741.
- ELEVATIONS SHOWN ARE NAVD 88, AS DERIVED BY GPS OBSERVATIONS.
- FIELD VERIFICATION OF MONUMENTS COMPLETED WITHIN 1 YEAR OF SIGNATURE DATE.

NOTICE: ACCORDING TO COLORADO LAW YOU MUST COMMENCE ANY LEGAL ACTION BASED UPON ANY DEFECT IN THIS SURVEY WITHIN THREE YEARS AFTER YOU FIRST DISCOVER SUCH DEFECT. IN NO EVENT MAY ANY ACTION BASED UPON ANY DEFECT IN THIS SURVEY BE COMMENCED MORE THAN TEN YEARS FROM THIS SAID DATE OF THIS CERTIFICATION SHOWN HEREON.

I, BRIAN C. RITZ, A LICENSED PROFESSIONAL LAND SURVEYOR IN THE STATE OF COLORADO DO HEREBY CERTIFY TO **CRESCENT POINT ENERGY**, THAT THE SURVEY AND WELL LOCATION CERTIFICATE SHOWN HEREON WERE DONE BY ME OR UNDER MY DIRECT SUPERVISION AND THAT THE DRAWING SHOWN HEREON ACCURATELY DEPICTS THE PROPOSED LOCATION OF THE WELL. THIS CERTIFICATE DOES NOT REPRESENT A LAND SURVEY PLAT OR IMPROVEMENT SURVEY PLAT AS DEFINED BY C.R.S. 38-51-102 AND CANNOT BE RELIED UPON TO DETERMINE OWNERSHIP.

BRIAN C. RITZ, PLS 38452
COLORADO LICENSED PROFESSIONAL LAND SURVEYOR
FOR AND ON BEHALF OF P.F.S., LLC



SHEET 1 OF 3

PREPARED BY:



FIELD DATE:

02-24-16

DRAWING DATE:

04-19-16

BY:

KAD

CHECKED BY:

MLP

WELL NAME:

ANDERSON FED-8-59-6-2124CE

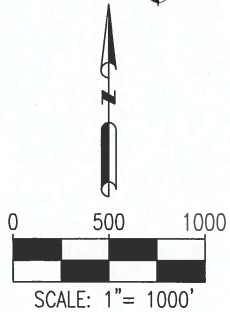
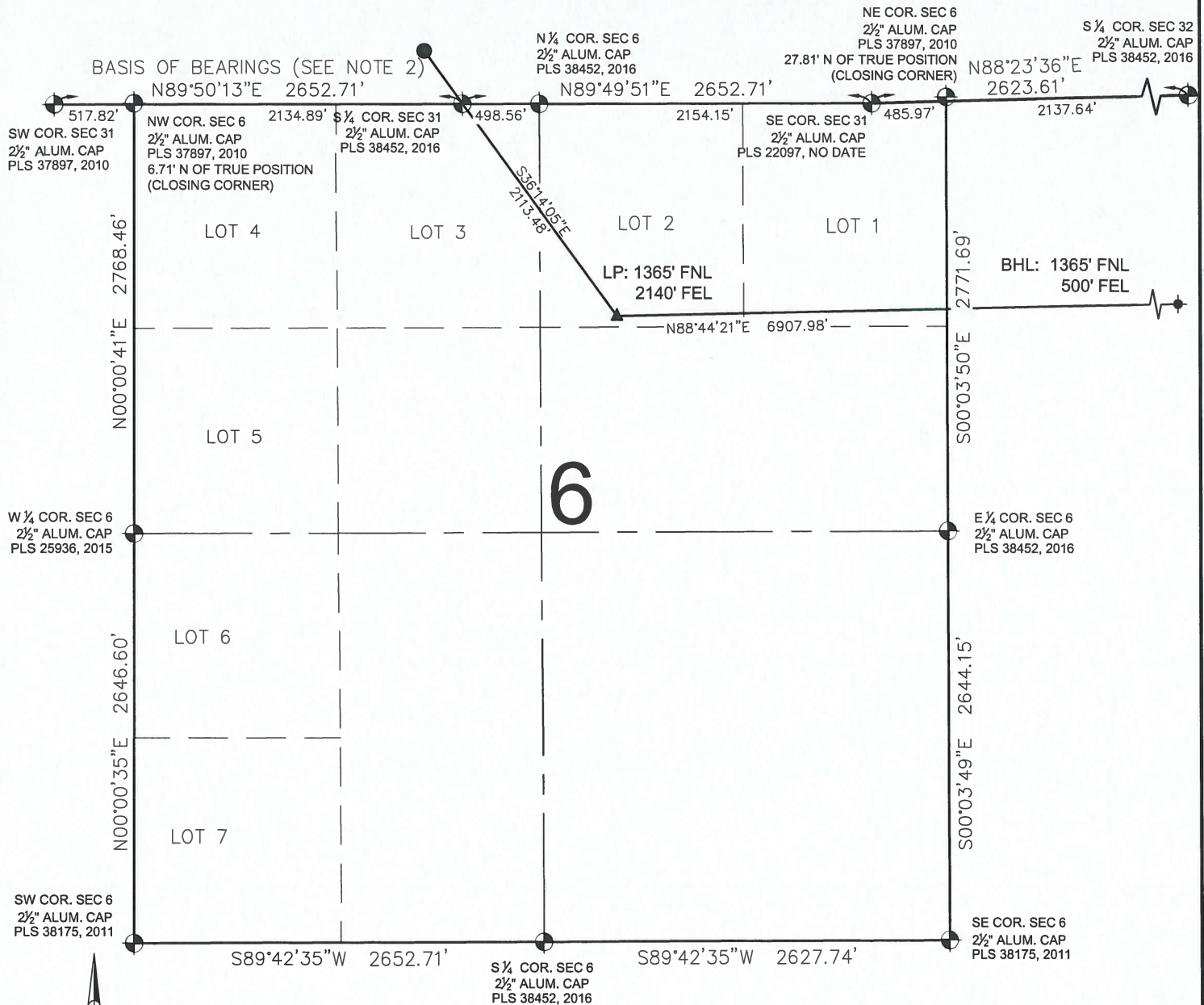
SURFACE LOCATION:

SE1/4 SW1/4 SEC. 31, T9N, R59W, 6TH P.M.
WELD COUNTY, COLORADO

PREPARED FOR:



ANDERSON FED-8-59-6-2124CE WELL LOCATION CERTIFICATE





LEGEND

- ⊕ = EXISTING MONUMENT
- = CALCULATED POSITION
- = PROPOSED WELL
- ◆ = EXISTING WELL
- ⬮ = BOTTOM HOLE
- ▲ = LANDING POINT
- LP = LANDING POINT
- BHL = BOTTOM HOLE LOCATION

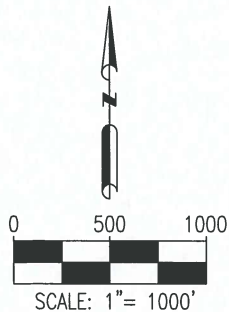
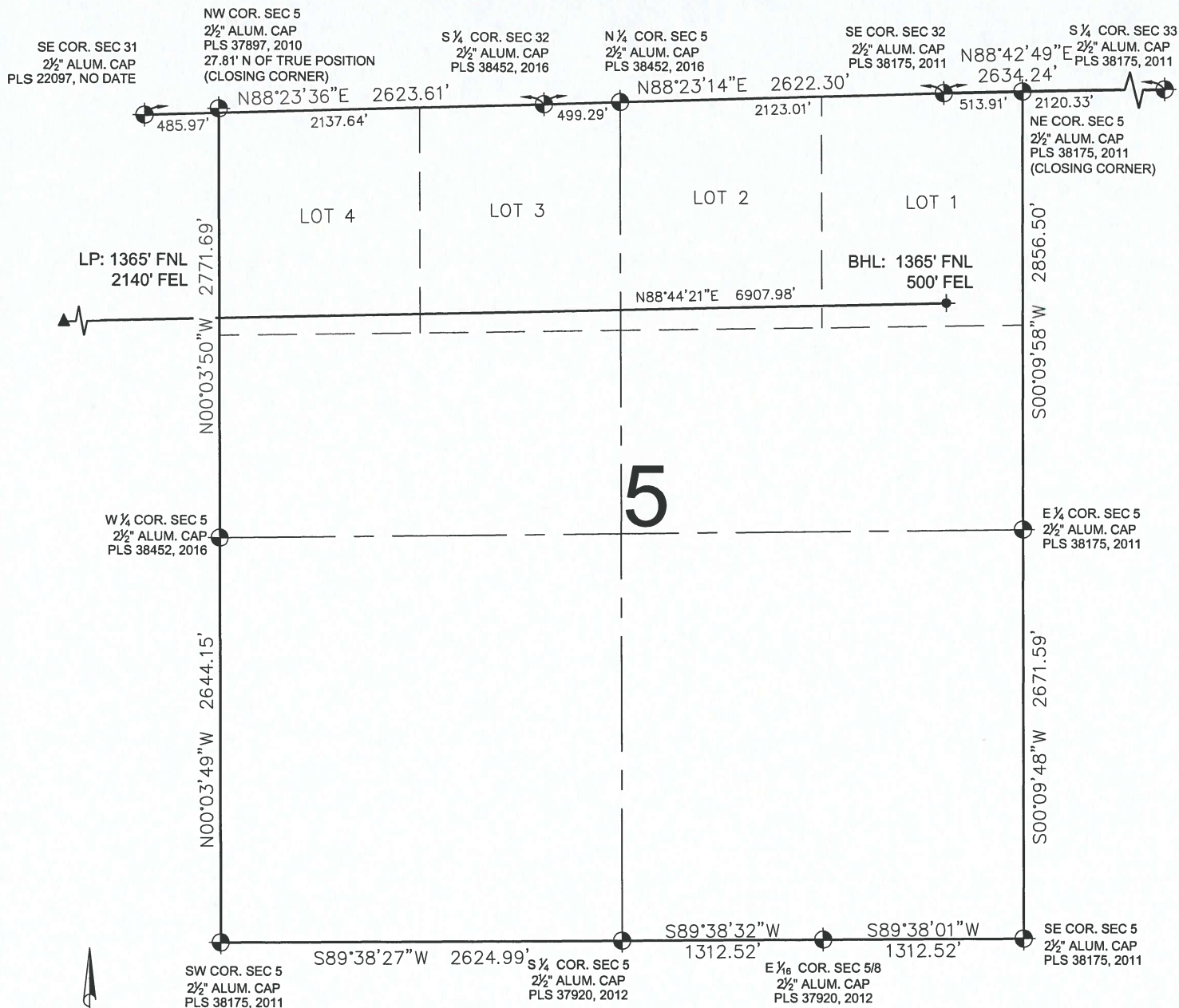
BRIAN C. RITZ, PLS 38452
COLORADO LICENSED PROFESSIONAL LAND SURVEYOR
FOR AND ON BEHALF OF P.F.S., LLC



SHEET 2 OF 3

PREPARED BY:  PFS Petroleum Field Services, LLC 7535 Hilltop Circle Denver, CO 80221	FIELD DATE: 02-24-16 DRAWING DATE: 04-19-16 BY: KAD CHECKED BY: MLP	WELL NAME: ANDERSON FED-8-59-6-2124CE SURFACE LOCATION: SE1/4 SW1/4 SEC. 31, T9N, R59W, 6TH P.M. WELD COUNTY, COLORADO	PREPARED FOR:  Crescent Point ENERGY CORP
--	--	---	--

ANDERSON FED-8-59-6-2124CE WELL LOCATION CERTIFICATE





LEGEND

- ⊕ = EXISTING MONUMENT
- = CALCULATED POSITION
- = PROPOSED WELL
- ◆ = EXISTING WELL
- ⬮ = BOTTOM HOLE
- ▲ = LANDING POINT
- LP = LANDING POINT
- BHL = BOTTOM HOLE LOCATION

BRIAN C. RITZ, PLS 38452
COLORADO LICENSED PROFESSIONAL LAND SURVEYOR
FOR AND ON BEHALF OF P.F.S., LLC



SHEET 3 OF 3

PREPARED BY:  PFS Petroleum Field Services, LLC 7535 Hilltop Circle Denver, CO 80221	FIELD DATE: 02-24-16 DRAWING DATE: 04-19-16 BY: KAD CHECKED BY: MLP	WELL NAME: ANDERSON FED-8-59-6-2124CE SURFACE LOCATION: SE1/4 SW1/4 SEC. 31, T9N, R59W, 6TH P.M. WELD COUNTY, COLORADO	PREPARED FOR:  Crescent Point ENERGY CORP
--	--	---	--