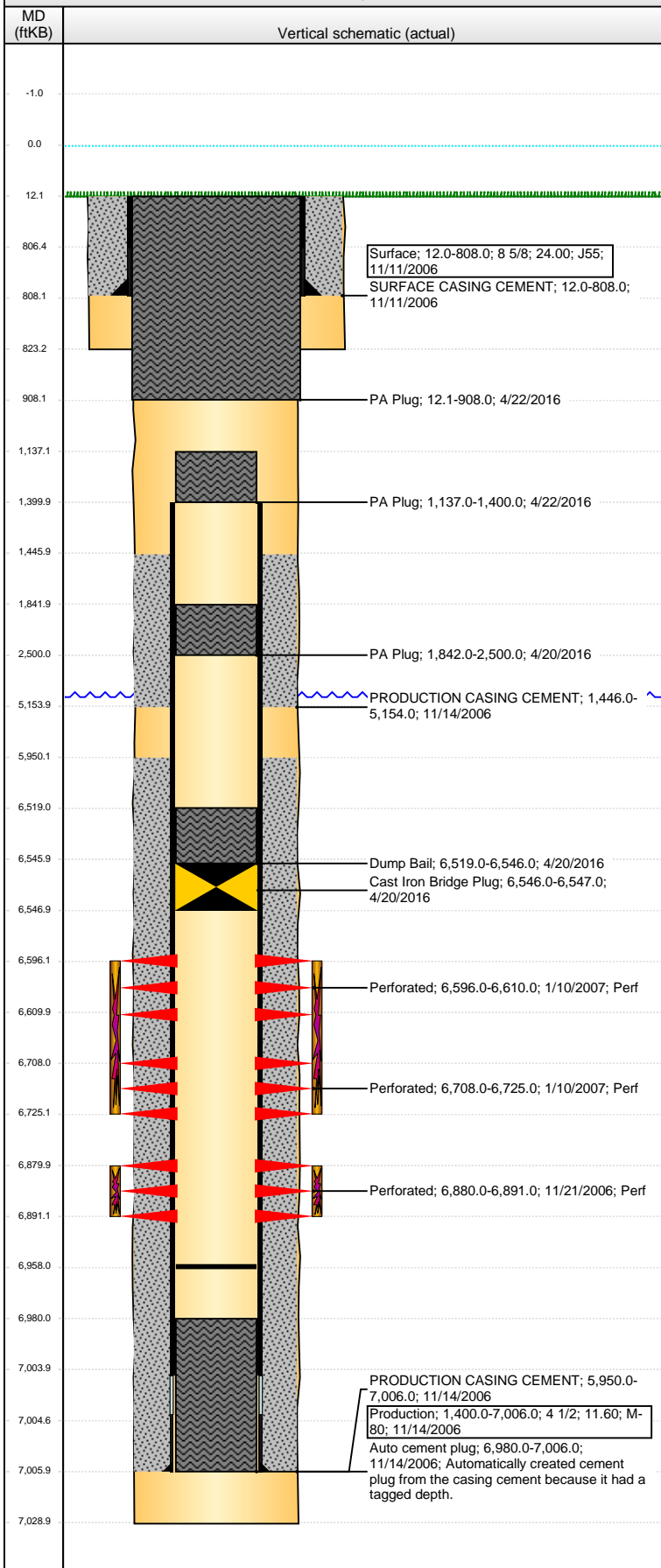


Well Name: CECIL USX A01-16

VERTICAL - ORIGINAL HOLE, 5/20/2016 2:00:16 PM



Well Header									
API 05-123-24339		Business Unit DJ BASIN		District 15		Well Config VERTICAL			
Original KB Elevation (ft) 4,727		KB - GL / MSL (ftKB) 12.00		Spud Date 11/10/2006		P & A Date			
Comment									
Directions To Well CR 61 AND CR 70 NORTH 1 MILE WEST .1 NORTHWEST INTO									
Congressional Location									
Quarter 1	Quarter 2	Quarter 3	Quarter 4	Section	Township	Twship N...	Range	Rng E/W Dir	
		SE	SE	1	6	N	64	W	
Bottom Hole Location									
North-South Distance (ft)		From N or S Line		East-West Distance (ft)			From E or W Line		
Plug Back Total Depths									
Date	Depth (ftKB)	Method			Com				
11/13/2006	7,005.0	FLOAT COLLAR							
11/20/2006	6,980.0	CASED HOLE LOG							
2/15/2007	6,958.0	TAG							
Wellbore Sections									
Section Des		Size (in)		Act Top, MD (ftKB)		Act Btm, MD (ftKB)			
SURFACE		12 1/4		12		823			
PRODUCTION		7 7/8		823		7,029			
Zone Statuses									
Zone Name	Status Date	Status	Fluid Type	Job	Prod Method				
NBRR	1/10/2007	PR	Water		Flowing				
NBRR	11/11/2010	PR							
NBRR	4/20/2016	P&A	Water	PLUG AND AB...	Flowing				
CODL	1/10/2007	PR							
CODL	11/11/2010	PR	Water	PLUG AND AB...	Flowing				
CODL	4/20/2016	P&A	Water						
NIOBRARA-C...	11/11/2010	PR	Water		Flowing				
Casing Strings									
Surface, 808.0ftKB									
Casing Description	Run Date	OD (in)	Wt/Len (l...	Grade	Top, MD (ft...	MD (ftKB)			
Surface	11/11/2006	8 5/8	24.00	J55	12.0	808.0			
Production, 7,006.0ftKB									
Casing Description	Run Date	OD (in)	Wt/Len (l...	Grade	Top, MD (ft...	MD (ftKB)			
Production	11/14/2006	4 1/2	11.60	M-80	12.0	7,006.0			
Cement									
Description				Top Depth (ftKB)	Bottom Depth (ftKB)				
SURFACE CASING CEMENT				12.0	808.0				
Description				Top Depth (ftKB)	Bottom Depth (ftKB)				
PRODUCTION CASING CEMENT				1,446.0	5,154.0				
Description				Top Depth (ftKB)	Bottom Depth (ftKB)				
PRODUCTION CASING CEMENT				5,950.0	7,006.0				
Description				Top Depth (ftKB)	Bottom Depth (ftKB)				
PA Plug				1,842.0	2,500.0				
Description				Top Depth (ftKB)	Bottom Depth (ftKB)				
Dump Bail				6,519.0	6,546.0				
Description				Top Depth (ftKB)	Bottom Depth (ftKB)				
PA Plug				1,137.0	1,400.0				
Description				Top Depth (ftKB)	Bottom Depth (ftKB)				
PA Plug				12.1	908.0				
Tubing Strings									
Tubing Description	Run Date	String...	ID (in)	Wt (lb/ft)	Grade	Len (ft)	Set De...		
Tubing	2/20/2007	2 3/8	1.995	4.70	J-55	6,855.00			
Perforation Data									
Zone	Bnch/St g	Entered Shot Total	Top (ftKB)	Btm (ftKB)	Date				
NBRR, ORIGINAL HOLE		84	6,596.00	6,610.00	1/10/2007				
NBRR, ORIGINAL HOLE		102	6,708.00	6,725.00	1/10/2007				
CODL, ORIGINAL HOLE		44	6,880.00	6,891.00	11/21/2006				

Well Name: CECIL USX A01-16

VERTICAL - ORIGINAL HOLE, 5/20/2016 2:00:18 PM

Stimulations & Treatments

Date	Zone	Primary Job Type
1/10/2007	CODL, ORIGINAL HOLE	
Technical Result	Tech Result Details	Tech Result Note

Comment
2nd attempt originally the sand master wouldn't start and job was delayed a day.

Date	Zone	Primary Job Type
1/10/2007	NBRR, ORIGINAL HOLE	
Technical Result	Tech Result Details	Tech Result Note

Comment
2nd attempt originally the sand master wouldn't start and job was delayed a day.

Other In Hole

Run Date	Des	OD (in)	Top (ftKB)	Btm (ftKB)
4/20/2016	Cast Iron Bridge Plug	3.99	6,546.0	6,547.0

Logs

Date	Type	Top, MD (ftKB)	Btm, MD (ftKB)
11/14/2006		12.0	7,029.0
11/14/2006	INDUCTION	12.0	7,029.0
11/20/2006	CEMENT BOND	1,270.0	6,980.0
1/13/2012	GYRO	12.0	6,800.0

