

K:\WADARKO\2013\113_113_COLORADO_T2N66W_SEC32\PLATS\LAND FED 13N-32HZ.dwg, 5/19/2016 8:57:02 AM, jlh

T2N, R66W

S 89°44'02" W
1326.23' (M)

S 89°30'59" W 2642.26' (C)

S 89°43'45" W
1325.84' (C)

E. 1/16 COR.
SEC. 29 & 32, T2N, R66W
FOUND 2 1/2" ALUM. CAP
L.S. NO. 30462

NE COR.
SEC. 32, T2N, R66W
FOUND 3 1/4" ALUM. CAP
L.S. NO. 25369

NW COR.
SEC. 32, T2N, R66W
FOUND 2 1/2" ALUM. CAP
WITNESS COR. 120' WEST
OF CORNER POSITION
L.S. NO. 13155

HEEL
LOCATION
1072'
1174'
1394'

CENTER N. 1/16 COR.
SEC. 32, T2N, R66W
FOUND 2 1/2" ALUM. CAP
L.S. NO. 25937

SURFACE LOCATION: NAD 83
GROUND ELEVATION= 4897.2'
LATITUDE= -104.099027°
LONGITUDE= -104.805574°
LONGITUDE= -104°48'20.066"
HEEL LOCATION: NAD 83
LATITUDE= 40.098937°
LONGITUDE= -104.806360°
LATITUDE= 40°05'56.175"
LONGITUDE= -104°48'22.895"
BOTTOM HOLE LOCATION: NAD 83
LATITUDE= 40.086534°
LONGITUDE= -104.806361°
LATITUDE= 40°05'11.522"
LONGITUDE= -104°48'22.898"

LAND FED 13S-32HZ

SURFACE LOCATION

W. 1/4 COR.
SEC. 32, T2N, R66W
FOUND 2 1/2" ALUM. CAP
L.S. NO. 25937

S 89°36'06" W
2650.08' (M)

CENTER COR.
SEC. 32, T2N, R66W
FOUND 2 1/2" ALUM. CAP
L.S. NO. 25937

S 89°36'16" W
2647.88' (M)

SURFACE LOCATION: NAD 27
LATITUDE= 40.099044°
LONGITUDE= -104.805047°
LATITUDE= 40°05'56.557"
LONGITUDE= -104°48'18.168"
HEEL LOCATION: NAD 27
LATITUDE= 40.098954°
LONGITUDE= -104.805833°
LATITUDE= 40°05'56.235"
LONGITUDE= -104°48'20.998"
BOTTOM HOLE LOCATION: NAD 27
LATITUDE= 40.086551°
LONGITUDE= -104.805833°
LATITUDE= 40°05'11.582"
LONGITUDE= -104°48'21.000"

E 1/4 COR.
SEC. 32, T2N, R66W
FOUND 2 1/2" ALUM. CAP
ILLEGIBLE

SW COR.
SEC. 32, T2N, R66W
FOUND 3 1/4" ALUM. CAP
L.S. NO. 17669

S 89°35'29" W
2656.71' (M)

BOTTOM OF HOLE:
300' FNL & 1166' FWL

S. 1/4 COR.
SEC. 32, T2N, R66W
FOUND 3 1/4" ALUM. CAP
L.S. NO. 14823

SE COR.
SEC. 32, T2N, R66W
FOUND 3 1/4" ALUM. CAP
L.S. NO. 13155

W. 1/4 COR.
SEC. 5, T1N, R66W
FOUND 2" ALUM. CAP
L.S. NO. 13155

N 00°33'03" W 2645.02' (M)

N 00°39'56" W 2587.92' (M)

S 00°26'44" E 4518' GRID
S 00°00'11" W TRUE
S 08°24'44" E MAGNETIC

N 00°41'40" W 2644.58' (M)

CENTER COR.
SEC. 5, T1N, R66W
FOUND 3 1/4" ALUM. CAP
L.S. NO. 13155

N 00°41'40" W 2644.58' (M)

S 89°32'16" W 2643.78' (M)

N 00°16'00" W 2594.81' (M)

E. 1/4 COR.
SEC. 5, T1N, R66W
FOUND 3 1/4" ALUM. CAP
L.S. NO. 13155

N 00°07'04" W 2600.30' (M)

CERTIFICATE OF SURVEYOR:

THIS IS TO CERTIFY THAT THE ABOVE PLAT WAS PREPARED FROM FIELD NOTES OF ACTUAL SURVEY MADE BY ME OR UNDER MY SUPERVISION AND THAT THE SAME ARE TRUE AND CORRECT TO THE BEST OF MY KNOWLEDGE AND BELIEF. THIS CERTIFICATE DOES NOT REPRESENT A LAND SURVEY PLAT OR IMPROVEMENT SURVEY PLAT AS DEFINED BY C.R.S. 38-51-102 AND CANNOT BE RELIED UPON TO DETERMINE OWNERSHIP.

Randall K. French
PROFESSIONAL LAND SURVEYOR
COLORADO REGISTRATION NUMBER 18512

NOTICE:
ACCORDING TO COLORADO STATE LAW YOU MUST COMMENCE ANY LEGAL ACTION BASED UPON ANY DEFECT IN THIS SURVEY WITHIN THREE YEARS AFTER YOU FIRST DISCOVER SUCH DEFECT. IN NO EVENT MAY ANY ACTION BASED UPON ANY DEFECT IN THIS SURVEY BE COMMENCED MORE THAN TEN YEARS FROM THE DATE ON THE CERTIFICATION SHOWN HEREON.

NOTE:
MAGNETIC NORTH IS CURRENT AS OF 6/2/2015.
MAGNETIC NORTH CHANGES WEST 0°06' PER YEAR.

0 1000' 2000'

SCALE: 1" = 1000'

NOTES:

- ▲ INDICATES FOUND SECTION CORNER
- INDICATES CALCULATED CORNER
- ELEVATION BASED ON NAVD88 (GEOID09)
- BASIS OF BEARING DERIVED FROM COLORADO COORDINATE SYSTEM 1983 NORTH ZONE UNLESS OTHERWISE NOTED.
- ALL MEASURED DISTANCES ARE GRID.
COMBINED SCALE FACTOR: .99972835
- OPERATOR: ROB WILSON / PDOP = 1.5
- SEE ADDENDUM TO WELL LOCATION CERTIFICATE FOR EXISTING IMPROVEMENTS WITHIN 500' OF THE WELL PAD.
- WELL FOOTAGES ARE MEASURED AT RIGHT ANGLES TO THE SECTION LINES.
- NO. 2 AS SHOWN HEREON IS GOVERNMENT LOT 2 OF THE ORIGINAL GLO SURVEY.
- THE BOTTOM OF HOLE BEARS S00°26'44"E 4518' FROM THE HEEL LOCATION.

WELL PAD - LAND FED 13N-32HZ

LAND FED 13S-32HZ
WELL LOCATION CERTIFICATE
1040' FNL & 1394' FWL NENW (SURFACE)
1072' FNL & 1174' FWL NWNW (HEEL)
LOCATED IN SECTION 32
T2N, R66W, 6TH P.M.
300' FNL & 1166' FWL LOT 2 (NWNW) (BOTTOM)
LOCATED IN SECTION 5
T1N, R66W, 6TH P.M.
WELD COUNTY, COLORADO

Kerr-McGee Oil &
Gas Onshore L.P.
1099 18th Street
Denver, Colorado 80202



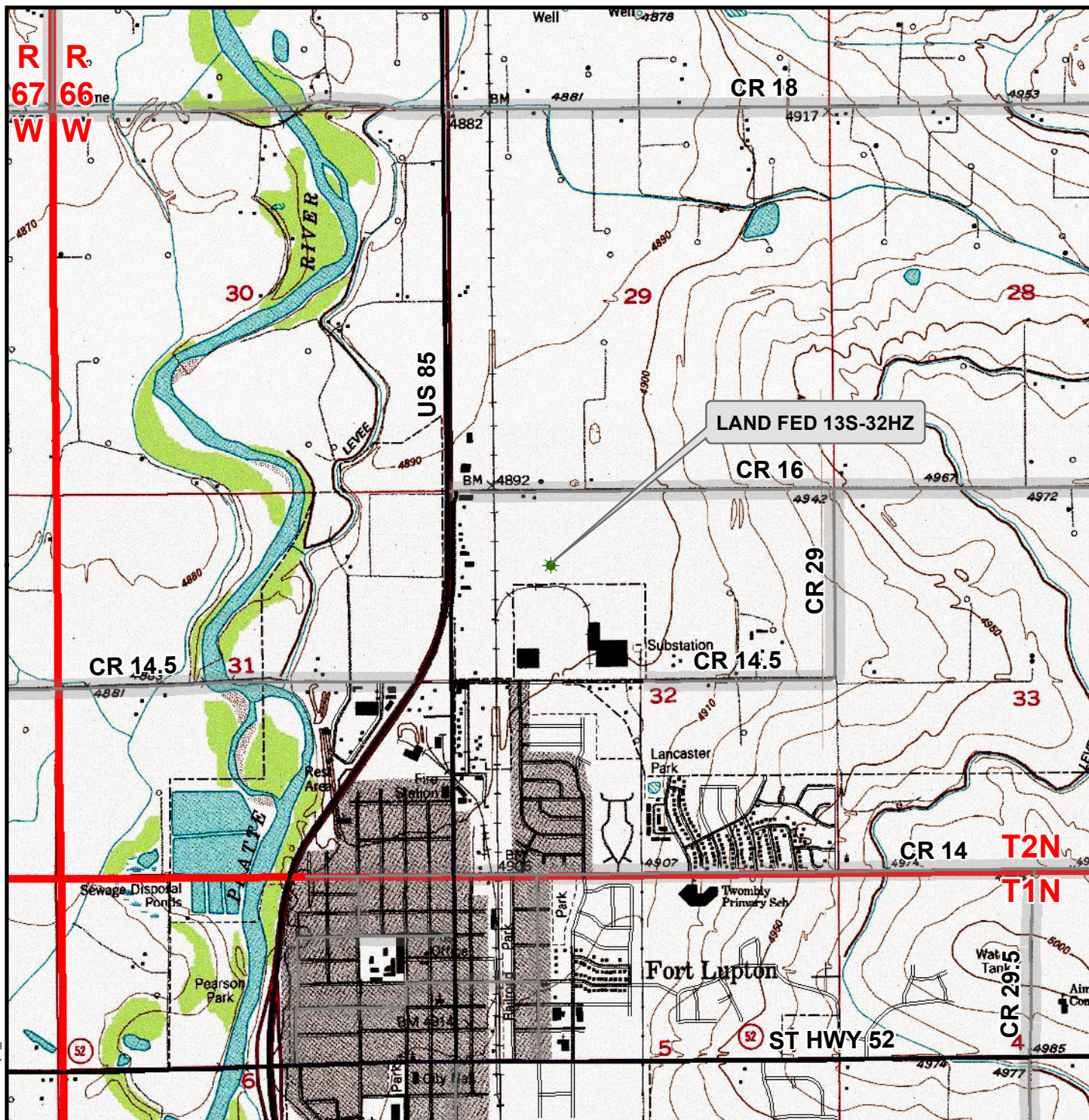
CONSULTING, LLC

SHERIDAN OFFICE
1095 Saberton Avenue
Sheridan, Wyoming 82801
Phone 307-674-0609

LOVELAND OFFICE
1635 Foxtrail Drive, Suite 204
Loveland, Colorado 80538
Phone 970-776-4331

DRAFTED BY:	MDZ	CHECKED BY:	RKF
DATE DRAFTED:	6/5/15	DATE SURVEYED:	3/24/15
REVISED:	5/18/16	FILE NAME:	13-113

K:\ANADARKO\2013\2013_113_COLORADO_T2N66W_SEC32\GIS\Maps_ABCLandFed 13N-32HZ\LandFed 13S-32HZ.mxd 6/9/2015 10:51:09 AM



Legend

- Well - Fee Proposed
- Well - Federal - Proposed
- Road - Primitive - Existing
- Road - Improved - Existing
- Road - County - Existing
- Road - Highway - Existing

WELL PAD - LAND FED 13N-32HZ

**GENERAL LOCATION MAP
LAND FED 13S-32HZ
LOCATED IN SECTION 32
T2N, R66W, 6th P.M.
WELD COUNTY, COLORADO**

**Kerr-McGee Oil &
Gas Onshore L.P.**

1099 18th Street
Denver, Colorado 80202



CONSULTING, LLC

SHERIDAN OFFICE
1095 Saberton Avenue
Sheridan, Wyoming 82801
Phone 307-674-0609

LOVELAND OFFICE
1635 Foxtail Drive, Suite 204
Loveland, Colorado 80538
Phone 970-776-4331



SCALE: 1" = 2,000ft

NAD83 CO-Nft

DRAWN: JELO

DATE: 10 June 2015

REVISED:

DATE: