

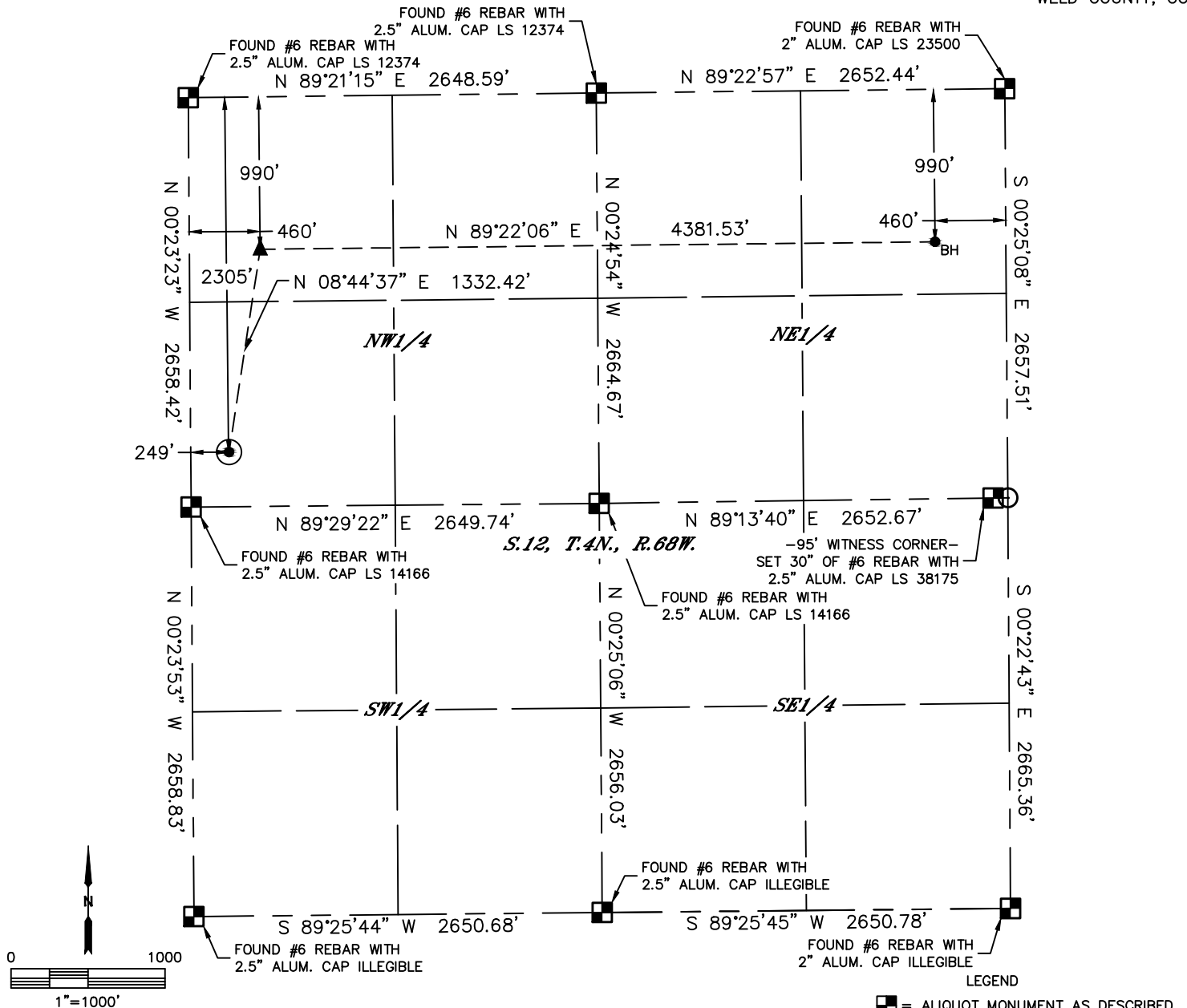


Lat40°, Inc. 6250 W. 10th Street, Unit 2, Greeley, CO 970-515-5294

WELL LOCATION CERTIFICATE

MAIL 3

SECTION: 12
TOWNSHIP: 4N
RANGE: 68W
6TH. P.M.
WELD COUNTY, CO



CLIENT: CUB CREEK ENERGY, LLC						LANDMAN: BOB GARDNER			
INSTRUMENT OPERATOR: BRIAN ROTTINGHAUS						SURVEY DATE: 1/15/2015		SURFACE USE: CROP LAND	
SHL FOOTAGE				SHL LAT °	SHL LONG °	SHL PDOP	SHL ELEV (FT.)	SHL 1/4/1/4	SHL S-T-R
2305	FNL	249	FWL	40.32931	-104.95988	2.3	4921	SWNW	12-4-68

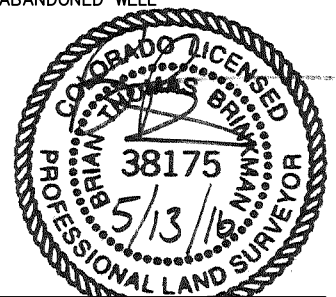
BHL FOOTAGE				BHL LAT °	BHL LONG °	BHL S-T-R	EP LAT °	EP LONG °	EP S-T-R
990	FNL	460	FEL	40.33298	-104.94341	12-4-68	40.33292	-104.95912	12-4-68

NOTE:

- 1) Bearings shown are Grid Bearings of the Colorado State Plane Coordinate System, North Zone, North American Datum 1983. The lineal dimensions as contained herein are based upon the "U.S. Survey Foot."
- 2) Ground elevations are based on an observed GPS elevation (NAVD 1988 DATUM).
- 3) Latitude and Longitude shown are (NAD 83 DATUM).
- 4) IMPROVEMENTS: See LOCATION DRAWING for all visible improvements within 500' of oil and gas location.
- 5) This map does not represent a boundary survey

NEAREST CULTURAL ITEMS	
BUILDING	±2169' NW
BUILDING UNIT	±2267' NE
HIGH OCCUPANCY BUILDING UNIT	±2569' NE
DESIGNATED OUTSIDE ACTIVITY AREA	5280'+
PUBLIC ROAD (HIGHWAY 60)	±2305' N
ABOVE GROUND UTILITY	±2227' NW
RAILROAD	±355' S
PROPERTY LINE	±249' W

- LEGEND
- = ALIQUOT MONUMENT AS DESCRIBED
 - = CALCULATED POSITION
 - = SURFACE HOLE LOCATION (SHL)
 - ▲ = ENTRY POINT LOCATION (EP)
 - BH = BOTTOM HOLE LOCATION (BHL)
 - ⊙ = EXISTING WELL
 - ⊙ = ABANDONED WELL



Brian T. Brinkman—On behalf of Lat40°, Inc.
Colorado Licensed Professional Land Surveyor No. 38175
DATE: 5/13/2016
PROJECT#: 2014184

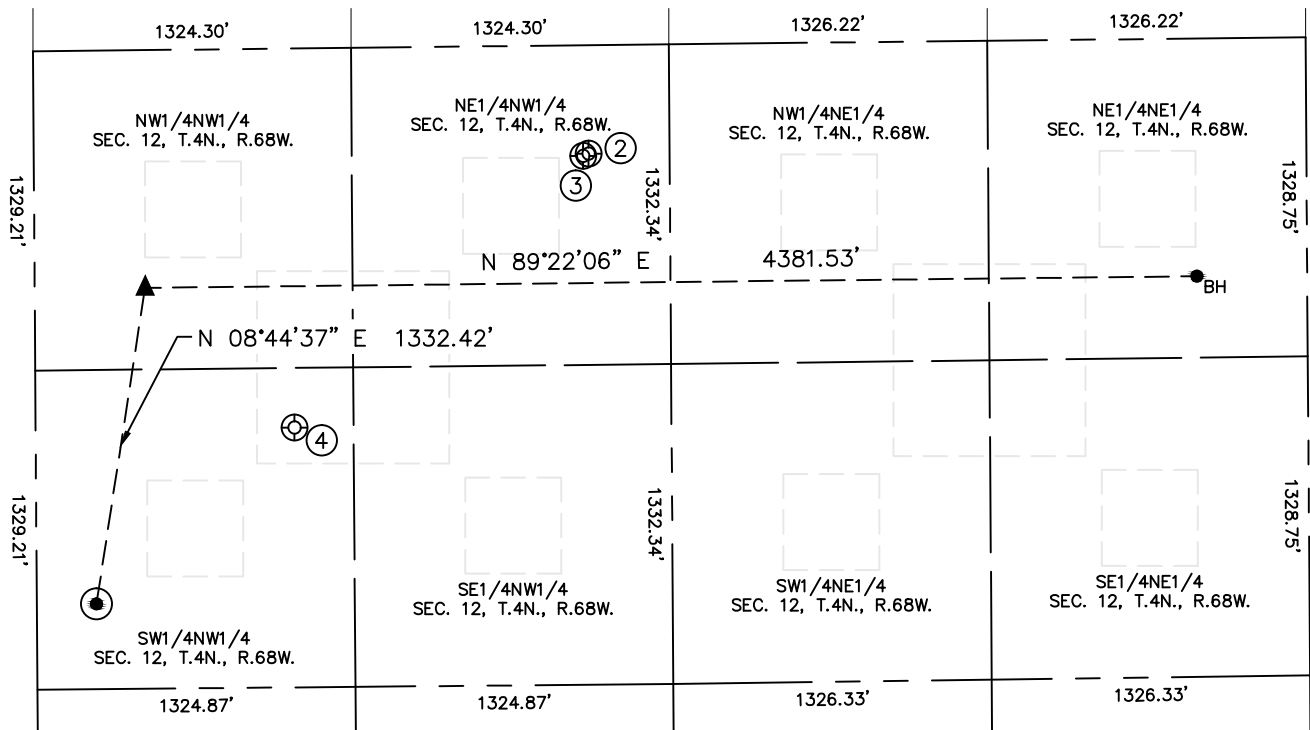


Lat40°, Inc. 6250 W. 10th Street, Unit 2, Greeley, CO 970-515-5294

SITE SKETCH

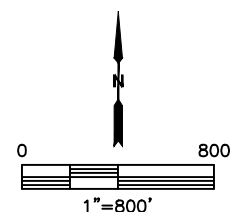
VAIL 3

SECTION: 12
TOWNSHIP: 4N
RANGE: 68W
6TH. P.M.
WELD COUNTY, CO



WELL NO.	WELL NAME	SHL FOOTAGE				SHL LAT°	SHL LONG°	PDOP	ELEV (FT.)	1/4/1/4
2	NLB 2-1-12	452	FNL	2312	FWL	40.33442	-104.95249	1.5	4973	NENW
3	NLB 1-3-12	462	FNL	2289	FWL	40.33440	-104.95257	1.5	4973	NENW
4	VAIL 1	1579	FNL	1078	FWL	40.33132	-104.95691	1.6	4930	SWNW

- LEGEND
- = SURFACE HOLE LOCATION (SHL)
 - ▲ = ENTRY POINT LOCATION (EP)
 - _{BH} = BOTTOM HOLE LOCATION (BHL)
 - ⊕ = EXISTING WELL
 - ⊗ = ABANDONED WELL



DATE: 5/13/2016
PROJECT#: 2014184