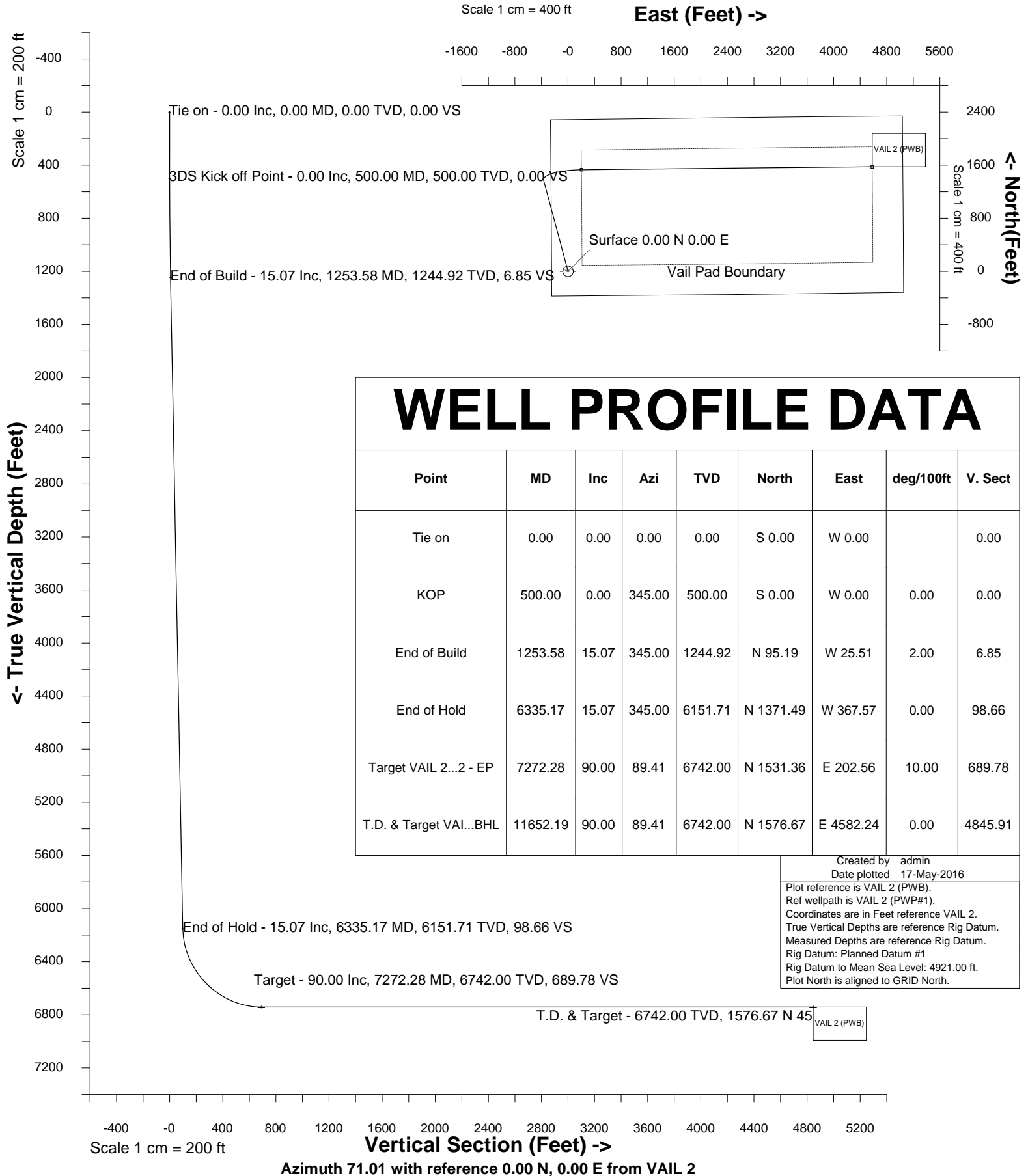


Cub Creek Energy, LLC

| | | | |
|---------------------|---------------------------------------|-----------------|---------------------|
| Location | Weld County, CO | Slot | VAIL 2 |
| Field | WATTENBERG | Well | VAIL 2 |
| Installation | Vail Pad - Rev 03 - 05-13-2016 | Wellbore | VAIL 2 (PWB) |



| Wellhead Details | | | | | | | |
|------------------|-------------|---------------|--------------|--------------|--------|-------|-----------------------------|
| Name | Latitude | Longitude | Northing | Easting | North | East | Slot Elevation Above Ground |
| VAIL 2 | 40.32936000 | -104.95988000 | 1363285.2594 | 3150584.8273 | 14.57S | 0.09E | 0.00 |

| Declination | | |
|-------------|--------------------------|-------|
| Date | Source | Time |
| May-16-2016 | EMM-2015 [2000.0-2020.0] | 11:20 |

| Installation Details | | | | | | |
|--------------------------------|----------------------------------|-----------------------------------|--------------|--------------|--------------------------------------------|-----------------|
| Name | Installation Position (Latitude) | Installation Position (Longitude) | Northing | Easting | Coord System Name | North Alignment |
| Vail Pad - Rev 03 - 05-13-2016 | 40.32940000 | -104.95988000 | 1363299.8308 | 3150584.7385 | CO83-NF on NORTH AMERICAN DATUM 1983 datum | Grid |

| Summary Wellpath | | | | | | | | | |
|------------------|----------|----------|---------|-----------|----------|--------------------|----------------------|------------|------------|
| MD[ft] | Inc[deg] | Azi[deg] | TVD[ft] | North[ft] | East[ft] | Dogleg [deg/100ft] | Vertical Section[ft] | Northing | Easting |
| 0.00 | 0.00 | 0.000 | 0.00 | 0.00N | 0.00E | | 0.00 | 1363285.26 | 3150584.83 |
| 500.00 | 0.00 | 345.000 | 500.00 | 0.00N | 0.00E | ==> | 0.00 | 1363285.26 | 3150584.83 |
| 1253.58 | 15.07 | 345.000 | 1244.92 | 95.19N | 25.51W | 2.00 | 6.85 | 1363380.44 | 3150559.32 |
| 6335.17 | 15.07 | 345.000 | 6151.71 | 1371.49N | 367.57W | ==> | 98.66 | 1364656.69 | 3150217.27 |
| 7272.28 | 90.00 | 89.410 | 6742.00 | 1531.36N | 202.56E | 10.00 | 689.78 | 1364816.55 | 3150787.38 |
| 11652.19 | 90.00 | 89.410 | 6742.00 | 1576.67N | 4582.24E | ==> | 4845.91 | 1364861.86 | 3155166.87 |

| Interpolated Wellpath | | | | | | | | |
|-----------------------|----------|----------|---------|-----------|----------|--------------------|----------------------|----------------------|
| MD[ft] | Inc[deg] | Azi[deg] | TVD[ft] | North[ft] | East[ft] | Dogleg [deg/100ft] | Vertical Section[ft] | All Station Comments |
| 0.00 | 0.00 | 0.000 | 0.00 | 0.00N | 0.00E | | 0.00 | Slot Datum |
| 100.00 | 0.00 | 0.000 | 100.00 | 0.00N | 0.00E | ==> | 0.00 | |
| 200.00 | 0.00 | 0.000 | 200.00 | 0.00N | 0.00E | ==> | 0.00 | |
| 300.00 | 0.00 | 0.000 | 300.00 | 0.00N | 0.00E | ==> | 0.00 | |
| 400.00 | 0.00 | 0.000 | 400.00 | 0.00N | 0.00E | ==> | 0.00 | |
| 500.00 | 0.00 | 345.000 | 500.00 | 0.00N | 0.00E | ==> | 0.00 | |
| 600.00 | 2.00 | 345.000 | 599.98 | 1.69N | 0.45W | 2.00 | 0.12 | |
| 700.00 | 4.00 | 345.000 | 699.84 | 6.74N | 1.81W | 2.00 | 0.48 | |
| 800.00 | 6.00 | 345.000 | 799.45 | 15.16N | 4.06W | 2.00 | 1.09 | |
| 900.00 | 8.00 | 345.000 | 898.70 | 26.93N | 7.22W | 2.00 | 1.94 | |
| 1000.00 | 10.00 | 345.000 | 997.47 | 42.04N | 11.27W | 2.00 | 3.02 | |
| 1100.00 | 12.00 | 345.000 | 1095.62 | 60.47N | 16.21W | 2.00 | 4.35 | |
| 1200.00 | 14.00 | 345.000 | 1193.06 | 82.20N | 22.03W | 2.00 | 5.91 | |
| 1300.00 | 15.07 | 345.000 | 1289.74 | 106.84N | 28.64W | ==> | 7.69 | |
| 1400.00 | 15.07 | 345.000 | 1386.30 | 131.96N | 35.37W | ==> | 9.49 | |
| 1500.00 | 15.07 | 345.000 | 1482.86 | 157.08N | 42.10W | ==> | 11.30 | |
| 1600.00 | 15.07 | 345.000 | 1579.42 | 182.19N | 48.83W | ==> | 13.11 | |
| 1700.00 | 15.07 | 345.000 | 1675.98 | 207.31N | 55.56W | ==> | 14.91 | |
| 1800.00 | 15.07 | 345.000 | 1772.54 | 232.43N | 62.29W | ==> | 16.72 | |
| 1900.00 | 15.07 | 345.000 | 1869.10 | 257.54N | 69.02W | ==> | 18.53 | |
| 2000.00 | 15.07 | 345.000 | 1965.66 | 282.66N | 75.75W | ==> | 20.33 | |
| 2100.00 | 15.07 | 345.000 | 2062.22 | 307.77N | 82.49W | ==> | 22.14 | |
| 2200.00 | 15.07 | 345.000 | 2158.78 | 332.89N | 89.22W | ==> | 23.95 | |
| 2300.00 | 15.07 | 345.000 | 2255.34 | 358.01N | 95.95W | ==> | 25.75 | |
| 2400.00 | 15.07 | 345.000 | 2351.90 | 383.12N | 102.68W | ==> | 27.56 | |
| 2500.00 | 15.07 | 345.000 | 2448.46 | 408.24N | 109.41W | ==> | 29.37 | |
| 2600.00 | 15.07 | 345.000 | 2545.02 | 433.36N | 116.14W | ==> | 31.17 | |
| 2700.00 | 15.07 | 345.000 | 2641.58 | 458.47N | 122.87W | ==> | 32.98 | |
| 2800.00 | 15.07 | 345.000 | 2738.14 | 483.59N | 129.61W | ==> | 34.79 | |
| 2900.00 | 15.07 | 345.000 | 2834.70 | 508.70N | 136.34W | ==> | 36.59 | |
| 3000.00 | 15.07 | 345.000 | 2931.27 | 533.82N | 143.07W | ==> | 38.40 | |
| 3100.00 | 15.07 | 345.000 | 3027.83 | 558.94N | 149.80W | ==> | 40.21 | |
| 3200.00 | 15.07 | 345.000 | 3124.39 | 584.05N | 156.53W | ==> | 42.01 | |

All data is in Feet unless otherwise stated
Coordinates are from Slot MD's are from Rig and TVD's are from Rig (Planned Datum #1 4921.0ft above Mean Sea Level)
Vertical Section is from 0.00N 0.00E on azimuth 71.010 degrees
Bottom hole distance is 4845.91 Feet on azimuth 71.01 degrees from Wellhead
Calculation method uses Minimum Curvature method
Prepared by IPT
Date Printed: 17-May-2016

| Interpolated Wellpath | | | | | | | | |
|-----------------------|----------|----------|---------|-----------|----------|-----------------------|-------------------------|-------------------------|
| MD[ft] | Inc[deg] | Azi[deg] | TVD[ft] | North[ft] | East[ft] | Dogleg [deg/100ft] | Vertical Section[ft] | All Station Comments |
| 3300.00 | 15.07 | 345.000 | 3220.95 | 609.17N | 163.26W | ==> | 43.82 | |
| 3400.00 | 15.07 | 345.000 | 3317.51 | 634.29N | 169.99W | ==> | 45.63 | |
| 3500.00 | 15.07 | 345.000 | 3414.07 | 659.40N | 176.73W | ==> | 47.43 | |
| 3600.00 | 15.07 | 345.000 | 3510.63 | 684.52N | 183.46W | ==> | 49.24 | |
| 3700.00 | 15.07 | 345.000 | 3607.19 | 709.63N | 190.19W | ==> | 51.05 | |
| 3800.00 | 15.07 | 345.000 | 3703.75 | 734.75N | 196.92W | ==> | 52.85 | |
| 3900.00 | 15.07 | 345.000 | 3800.31 | 759.87N | 203.65W | ==> | 54.66 | |
| 4000.00 | 15.07 | 345.000 | 3896.87 | 784.98N | 210.38W | ==> | 56.47 | |
| 4100.00 | 15.07 | 345.000 | 3993.43 | 810.10N | 217.11W | ==> | 58.27 | |
| 4200.00 | 15.07 | 345.000 | 4089.99 | 835.22N | 223.85W | ==> | 60.08 | |
| 4300.00 | 15.07 | 345.000 | 4186.55 | 860.33N | 230.58W | ==> | 61.89 | |
| 4400.00 | 15.07 | 345.000 | 4283.11 | 885.45N | 237.31W | ==> | 63.69 | |
| 4500.00 | 15.07 | 345.000 | 4379.67 | 910.56N | 244.04W | ==> | 65.50 | |
| 4600.00 | 15.07 | 345.000 | 4476.23 | 935.68N | 250.77W | ==> | 67.31 | |
| 4700.00 | 15.07 | 345.000 | 4572.79 | 960.80N | 257.50W | ==> | 69.11 | |
| 4800.00 | 15.07 | 345.000 | 4669.35 | 985.91N | 264.23W | ==> | 70.92 | |
| 4900.00 | 15.07 | 345.000 | 4765.91 | 1011.03N | 270.97W | ==> | 72.73 | |
| 5000.00 | 15.07 | 345.000 | 4862.47 | 1036.15N | 277.70W | ==> | 74.54 | |
| 5100.00 | 15.07 | 345.000 | 4959.03 | 1061.26N | 284.43W | ==> | 76.34 | |
| 5200.00 | 15.07 | 345.000 | 5055.59 | 1086.38N | 291.16W | ==> | 78.15 | |
| 5300.00 | 15.07 | 345.000 | 5152.15 | 1111.49N | 297.89W | ==> | 79.96 | |
| 5400.00 | 15.07 | 345.000 | 5248.71 | 1136.61N | 304.62W | ==> | 81.76 | |
| 5500.00 | 15.07 | 345.000 | 5345.27 | 1161.73N | 311.35W | ==> | 83.57 | |
| 5600.00 | 15.07 | 345.000 | 5441.83 | 1186.84N | 318.08W | ==> | 85.38 | |
| 5700.00 | 15.07 | 345.000 | 5538.39 | 1211.96N | 324.82W | ==> | 87.18 | |
| 5800.00 | 15.07 | 345.000 | 5634.95 | 1237.08N | 331.55W | ==> | 88.99 | |
| 5900.00 | 15.07 | 345.000 | 5731.51 | 1262.19N | 338.28W | ==> | 90.80 | |
| 6000.00 | 15.07 | 345.000 | 5828.07 | 1287.31N | 345.01W | ==> | 92.60 | |
| 6100.00 | 15.07 | 345.000 | 5924.63 | 1312.42N | 351.74W | ==> | 94.41 | |
| 6200.00 | 15.07 | 345.000 | 6021.19 | 1337.54N | 358.47W | ==> | 96.22 | |
| 6300.00 | 15.07 | 345.000 | 6117.75 | 1362.66N | 365.20W | ==> | 98.02 | |
| 6400.00 | 14.87 | 10.270 | 6214.41 | 1387.84N | 368.27W | 10.00 | 103.31 | |
| 6500.00 | 19.32 | 41.340 | 6310.16 | 1412.95N | 355.02W | 10.00 | 124.01 | |
| 6600.00 | 26.85 | 58.390 | 6402.19 | 1437.27N | 324.79W | 10.00 | 160.51 | |
| 6700.00 | 35.55 | 68.000 | 6487.69 | 1460.05N | 278.49W | 10.00 | 211.71 | |
| 6800.00 | 44.74 | 74.150 | 6564.08 | 1480.60N | 217.52W | 10.00 | 276.05 | |
| 6900.00 | 54.17 | 78.550 | 6629.03 | 1498.31N | 143.74W | 10.00 | 351.57 | |
| 7000.00 | 63.72 | 82.010 | 6680.57 | 1512.62N | 59.40W | 10.00 | 435.98 | |
| 7100.00 | 73.35 | 84.930 | 6717.13 | 1523.11N | 32.95E | 10.00 | 526.72 | |
| 7200.00 | 83.01 | 87.570 | 6737.59 | 1529.46N | 130.49E | 10.00 | 621.02 | |
| 7300.00 | 90.00 | 89.410 | 6742.00 | 1531.64N | 230.28E | ==> | 716.09 | |
| 7400.00 | 90.00 | 89.410 | 6742.00 | 1532.68N | 330.28E | ==> | 810.98 | |
| 7500.00 | 90.00 | 89.410 | 6742.00 | 1533.71N | 430.27E | ==> | 905.87 | |
| 7600.00 | 90.00 | 89.410 | 6742.00 | 1534.75N | 530.27E | ==> | 1000.76 | |
| 7700.00 | 90.00 | 89.410 | 6742.00 | 1535.78N | 630.26E | ==> | 1095.65 | |
| 7800.00 | 90.00 | 89.410 | 6742.00 | 1536.82N | 730.26E | ==> | 1190.55 | |
| 7900.00 | 90.00 | 89.410 | 6742.00 | 1537.85N | 830.25E | ==> | 1285.44 | |
| 8000.00 | 90.00 | 89.410 | 6742.00 | 1538.89N | 930.25E | ==> | 1380.33 | |
| 8100.00 | 90.00 | 89.410 | 6742.00 | 1539.92N | 1030.24E | ==> | 1475.22 | |
| 8200.00 | 90.00 | 89.410 | 6742.00 | 1540.95N | 1130.24E | ==> | 1570.11 | |
| 8300.00 | 90.00 | 89.410 | 6742.00 | 1541.99N | 1230.23E | ==> | 1665.00 | |
| 8400.00 | 90.00 | 89.410 | 6742.00 | 1543.02N | 1330.23E | ==> | 1759.89 | |
| 8500.00 | 90.00 | 89.410 | 6742.00 | 1544.06N | 1430.22E | ==> | 1854.78 | |
| 8600.00 | 90.00 | 89.410 | 6742.00 | 1545.09N | 1530.21E | ==> | 1949.67 | |
| 8700.00 | 90.00 | 89.410 | 6742.00 | 1546.13N | 1630.21E | ==> | 2044.56 | |
| 8800.00 | 90.00 | 89.410 | 6742.00 | 1547.16N | 1730.20E | ==> | 2139.45 | |
| 8900.00 | 90.00 | 89.410 | 6742.00 | 1548.20N | 1830.20E | ==> | 2234.34 | |
| 9000.00 | 90.00 | 89.410 | 6742.00 | 1549.23N | 1930.19E | ==> | 2329.23 | |
| 9100.00 | 90.00 | 89.410 | 6742.00 | 1550.27N | 2030.19E | ==> | 2424.12 | |

All data is in Feet unless otherwise stated
Coordinates are from Slot MD's are from Rig and TVD's are from Rig (Planned Datum #1 4921.0ft above Mean Sea Level)
Vertical Section is from 0.00N 0.00E on azimuth 71.010 degrees
Bottom hole distance is 4845.91 Feet on azimuth 71.01 degrees from Wellhead
Calculation method uses Minimum Curvature method
Prepared by IPT
Date Printed: 17-May-2016



SYSDRILL
Well Design Combined Report
Wellbore: VAIL 2 (PWB)



| Interpolated Wellpath | | | | | | | | |
|-----------------------|----------|----------|---------|-----------|----------|-----------------------|-------------------------|-------------------------|
| MD[ft] | Inc[deg] | Azi[deg] | TVD[ft] | North[ft] | East[ft] | Dogleg [deg/100ft] | Vertical Section[ft] | All Station Comments |
| 9200.00 | 90.00 | 89.410 | 6742.00 | 1551.30N | 2130.18E | ==> | 2519.01 | |
| 9300.00 | 90.00 | 89.410 | 6742.00 | 1552.34N | 2230.18E | ==> | 2613.90 | |
| 9400.00 | 90.00 | 89.410 | 6742.00 | 1553.37N | 2330.17E | ==> | 2708.79 | |
| 9500.00 | 90.00 | 89.410 | 6742.00 | 1554.41N | 2430.17E | ==> | 2803.68 | |
| 9600.00 | 90.00 | 89.410 | 6742.00 | 1555.44N | 2530.16E | ==> | 2898.58 | |
| 9700.00 | 90.00 | 89.410 | 6742.00 | 1556.48N | 2630.16E | ==> | 2993.47 | |
| 9800.00 | 90.00 | 89.410 | 6742.00 | 1557.51N | 2730.15E | ==> | 3088.36 | |
| 9900.00 | 90.00 | 89.410 | 6742.00 | 1558.54N | 2830.15E | ==> | 3183.25 | |
| 10000.00 | 90.00 | 89.410 | 6742.00 | 1559.58N | 2930.14E | ==> | 3278.14 | |
| 10100.00 | 90.00 | 89.410 | 6742.00 | 1560.61N | 3030.13E | ==> | 3373.03 | |
| 10200.00 | 90.00 | 89.410 | 6742.00 | 1561.65N | 3130.13E | ==> | 3467.92 | |
| 10300.00 | 90.00 | 89.410 | 6742.00 | 1562.68N | 3230.12E | ==> | 3562.81 | |
| 10400.00 | 90.00 | 89.410 | 6742.00 | 1563.72N | 3330.12E | ==> | 3657.70 | |
| 10500.00 | 90.00 | 89.410 | 6742.00 | 1564.75N | 3430.11E | ==> | 3752.59 | |
| 10600.00 | 90.00 | 89.410 | 6742.00 | 1565.79N | 3530.11E | ==> | 3847.48 | |
| 10700.00 | 90.00 | 89.410 | 6742.00 | 1566.82N | 3630.10E | ==> | 3942.37 | |
| 10800.00 | 90.00 | 89.410 | 6742.00 | 1567.86N | 3730.10E | ==> | 4037.26 | |
| 10900.00 | 90.00 | 89.410 | 6742.00 | 1568.89N | 3830.09E | ==> | 4132.15 | |
| 11000.00 | 90.00 | 89.410 | 6742.00 | 1569.93N | 3930.09E | ==> | 4227.04 | |
| 11100.00 | 90.00 | 89.410 | 6742.00 | 1570.96N | 4030.08E | ==> | 4321.93 | |
| 11200.00 | 90.00 | 89.410 | 6742.00 | 1572.00N | 4130.08E | ==> | 4416.82 | |
| 11300.00 | 90.00 | 89.410 | 6742.00 | 1573.03N | 4230.07E | ==> | 4511.71 | |
| 11400.00 | 90.00 | 89.410 | 6742.00 | 1574.06N | 4330.06E | ==> | 4606.60 | |
| 11500.00 | 90.00 | 89.410 | 6742.00 | 1575.10N | 4430.06E | ==> | 4701.50 | |
| 11600.00 | 90.00 | 89.410 | 6742.00 | 1576.13N | 4530.05E | ==> | 4796.39 | |
| 11652.19 | 90.00 | 89.410 | 6742.00 | 1576.67N | 4582.24E | ==> | 4845.91 | |

All data is in Feet unless otherwise stated
Coordinates are from Slot MD's are from Rig and TVD's are from Rig (Planned Datum #1 4921.0ft above Mean Sea Level)
Vertical Section is from 0.00N 0.00E on azimuth 71.010 degrees
Bottom hole distance is 4845.91 Feet on azimuth 71.01 degrees from Wellhead
Calculation method uses Minimum Curvature method
Prepared by IPT
Date Printed: 17-May-2016



SYSDRILL
Well Design Combined Report
Wellbore: VAIL 2 (PWB)



| Targets | | | | | | | |
|-------------------|-----------|----------|---------|-------------|---------------|------------|------------|
| Name | North[ft] | East[ft] | TVD[ft] | Latitude | Longitude | Northing | Easting |
| VAIL 2 - V2 - BHL | 1576.67N | 4582.24E | 6742.00 | 40.33361000 | -104.94341000 | 1364861.86 | 3155166.87 |
| VAIL 2 - V2 - EP | 1531.36N | 202.56E | 6742.00 | 40.33356000 | -104.95912000 | 1364816.55 | 3150787.38 |

| Survey Tool Program | | | | | |
|---------------------|-------------|----------|---------|-------------|-------------------|
| Reference | Survey Name | MD[ft] | TVD[ft] | Survey Tool | Error Model |
| 504796 | Planned | 11652.19 | 6742.00 | ISCWSA MWD | Rev 4 + SAG + FLT |

| Notes |
|-------|
| |



SYSDRILL
Closest Approach + Clearance Factor Summary Report
Wellbore: VAIL 2 (PWB)



| |
|--------------------------------------------------------------------------------------|
| Ellipse separations are reported ONLY if BOTH wells have uncertainty data |
| Only Depth and Magnetic Reference Field error terms are correlated across tie points |
| Scan limit is calculated on CENTRE to CENTRE distance |
| Summary data uses Closest Approach clearance calculation for all minima |
| Hole size/Casings ARE included |
| Hole size/Casings are NOT subtracted from Centre-Centre distance |
| Confidence limit of 95.00% / 2.80 SD. |

| Wellbore | | |
|--------------|-------------|--------------|
| Name | Created | Last Revised |
| VAIL 2 (PWB) | May-16-2016 | May-17-2016 |

| Well | | |
|--------|---------------|--------------|
| Name | Government ID | Last Revised |
| VAIL 2 | | May-16-2016 |

| Slot | | | | | | |
|--------|-------------|---------------|---------------|--------------|--------|-------|
| Name | Latitude | Longitude | Grid Northing | Grid Easting | North | East |
| VAIL 2 | 40.32936000 | -104.95988000 | 1363285.2594 | 3150584.8273 | 14.57S | 0.09E |

| Installation | | | | | | |
|--------------------------------|----------------------------------|-----------------------------------|--------------|--------------|--------------------------------------------|-----------------|
| Name | Installation Position (Latitude) | Installation Position (Longitude) | Easting | Northing | Coord System Name | North Alignment |
| Vail Pad - Rev 03 - 05-13-2016 | 40.32940000 | -104.95988000 | 3150584.7385 | 1363299.8308 | CO83-NF on NORTH AMERICAN DATUM 1983 datum | Grid |

| Clearance Summary | | | | | | | |
|---------------------------|-----------------|----------|--------------------|-------------------------|----------------|------------------|------------------|
| Offset WellName | Separation [ft] | MD[ft] | Diverging From[ft] | Ellipse Separation [ft] | Ellipse MD[ft] | Clearance Factor | Clearance MD[ft] |
| VAIL 1 | 14.56 | 566.99 | 11652.19 | 1.64 | 1295.93 | 1.12 | 1295.93 |
| VAIL 3 | 18.18 | 557.74 | 11652.19 | | | | |
| VAIL 4 | 32.76 | 557.74 | 11650.65 | 22.42 | 1066.27 | 1.63 | 11650.65 |
| VAIL 5 | 50.97 | 508.53 | 11649.88 | 41.95 | 1017.06 | 1.55 | 11649.88 |
| VAIL 6 | 65.55 | 508.53 | 705.38 | 56.84 | 967.85 | 2.36 | 11652.19 |
| VAIL 7 | 80.12 | 508.53 | 11648.50 | 73.77 | 738.19 | 2.49 | 11652.19 |
| VAIL 8 | 98.34 | 508.53 | 11647.56 | 98.31 | 1.00 | 1963.14 | 1.00 |
| VAIL 9 | 112.92 | 508.53 | 11646.98 | 107.50 | 574.15 | 3.80 | 11652.19 |
| NLB #2-1-12 | 170.46 | 10240.05 | 10240.05 | 2.75 | 10252.62 | 1.02 | 10252.62 |
| VAIL #1 | 818.65 | 7884.96 | 7884.96 | 744.03 | 7900.00 | 10.83 | 8021.65 |
| UPRC #11-818 | 1042.58 | 4500.00 | 4500.00 | 992.44 | 4642.39 | 17.59 | 6348.43 |
| NLB #1-3-12 | 1045.72 | 10127.54 | 10127.54 | 884.62 | 10170.60 | 6.36 | 10318.24 |
| ABRAMS #1 | 1887.56 | 7342.74 | 7342.74 | 1824.99 | 7381.89 | 23.33 | 8562.99 |
| HSR-MAPLEWOOD ACRES #12-7 | 2841.61 | 11652.19 | 11652.19 | 2644.15 | 11652.19 | 14.39 | 11652.19 |

