

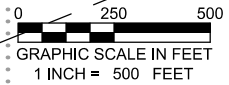
Section 7
T. 7 S., R. 93 W

Youberg
Beaver Creek Ranch

T. 7 S., R. 94 W
Section 12

T. 7 S., R. 93 W
Section 7

Youberg
Beaver Creek Ranch



500' Buffer

Youberg
Beaver Creek Ranch

Youberg
Beaver Creek Ranch

Gordman
Leverich, LLP

Youberg
Beaver Creek Ranch

CURRENT LAND USE		
<input type="checkbox"/> CROP LAND	<input checked="" type="checkbox"/> NON-CROP LAND	<input type="checkbox"/> SUBDIVIDED
<input type="checkbox"/> IRRIGATED	<input checked="" type="checkbox"/> RANGELAND	<input type="checkbox"/> INDUSTRIAL
<input type="checkbox"/> DRY LAND	<input type="checkbox"/> TIMBER	<input type="checkbox"/> COMMERCIAL
<input type="checkbox"/> IMPROVED PASTURE	<input type="checkbox"/> RECREATIONAL	<input type="checkbox"/> RESIDENTIAL
<input type="checkbox"/> HAY MEADOW	<input type="checkbox"/> OTHER (describe):	
<input type="checkbox"/> CRP	Existing Drill Pad	

136 East Third Street
Rifle, Colorado 81650
Ph. (970) 625-2720
Fax (970) 625-2773



BOOKCLIFF
Survey Services, Inc.

SCALE: 1" = 500'
DATE: 4/15/16
PLAT: 6 of 7
PROJECT: Valley
DFT: cs

Construction Plan Prepared for:
WPXENERGY

WPX Energy Rocky Mountain, LLC

SR 43-2 Drill Pad - Plat 6
LOCATION

*Visible Improvements to Well Head
(ft.)*

<i>Description</i>	<i>Building</i>	<i>Building Unit</i>	<i>High Occu. Building</i>	<i>DOAA</i>	<i>Public Road</i>	<i>Above Ground Utility</i>	<i>Railroad</i>	<i>Property Line</i>
RU 514-7	180° 4489	180° 4489	>5280	>5280	298° 2300	344° 3596	>5280	192° 843
RU 314-7	180° 4496	180° 4496	>5280	>5280	298° 2297	344° 3588	>5280	192° 850
RU 413-7	180° 4504	180° 4504	>5280	>5280	298° 2293	344° 3581	>5280	191° 857
RU 14-7	180° 4511	180° 4511	>5280	>5280	298° 2289	344° 3574	>5280	191° 865
RU 524-7	180° 4519	180° 4519	>5280	>5280	298° 2286	344° 3567	>5280	191° 872
RU 424-7	180° 4526	180° 4526	>5280	>5280	298° 2282	344° 3559	>5280	191° 879
RU 324-7	180° 4541	180° 4541	>5280	>5280	297° 2275	344° 3545	>5280	191° 894
RU 313-7	180° 4549	180° 4549	>5280	>5280	297° 2271	344° 3538	>5280	191° 901
RU 24-7	180° 4556	180° 4556	>5280	>5280	297° 2268	344° 3530	>5280	191° 909
SR 442-12	180° 4564	180° 4564	>5280	>5280	297° 2264	344° 3523	>5280	191° 916
SR 544-12	180° 4489	180° 4489	>5280	>5280	298° 2292	344° 3593	>5280	191° 841
SR 444-12	180° 4496	180° 4496	>5280	>5280	298° 2288	344° 3586	>5280	191° 848
SR 344-12	180° 4504	180° 4504	>5280	>5280	298° 2284	344° 3579	>5280	191° 855
RU 513-7	180° 4511	180° 4511	>5280	>5280	298° 2281	344° 3571	>5280	191° 863
SR 44-12	180° 4519	180° 4519	>5280	>5280	298° 2277	344° 3564	>5280	191° 870
SR 342-12	180° 4564	180° 4564	>5280	>5280	297° 2255	344° 3521	>5280	190° 914

Production Equipment

Seperators	181° 4599	181° 4599	>5280	>5280	294° 2303	344° 3431	>5280	196° 974
Tanks	181° 4402	181° 4402	>5280	>5280	297° 2382	344° 3600	>5280	200° 787

136 East Third Street
Rifle, Colorado 81650
Ph. (970) 625-2720
Fax (970) 625-2773



SCALE: NA
DATE: 4/15/16
PLAT: 6B of 7
PROJECT: Valley
DFT: cs

Construction Plan Prepared for:
WPXENERGY WPX Energy Rocky Mountain, LLC

*Drill Pad - Plat 6B
LOCATION TABLE*