

ESTIMATED EARTHWORK QUANTITIES (cy)				
ITEM	CUT	FILL	TOPSOIL	EXCESS
PAD	4350	12500	540	-8690
PIT	9000			9000
TOTALS	13350	12500	540	310

*NOTE:

- 1.) 10% Swell Factor Applied to Earthwork Cut Volume.
- 2.) Topsoil Volume Based on 12" Soil Depth.
- 3.) Total Disturbed Area = ± 7.71 ac.

REVISED: 4/25/16

136 East Third Street
Rifle, Colorado 81650
Ph. (970) 625-2720
Fax (970) 625-2773



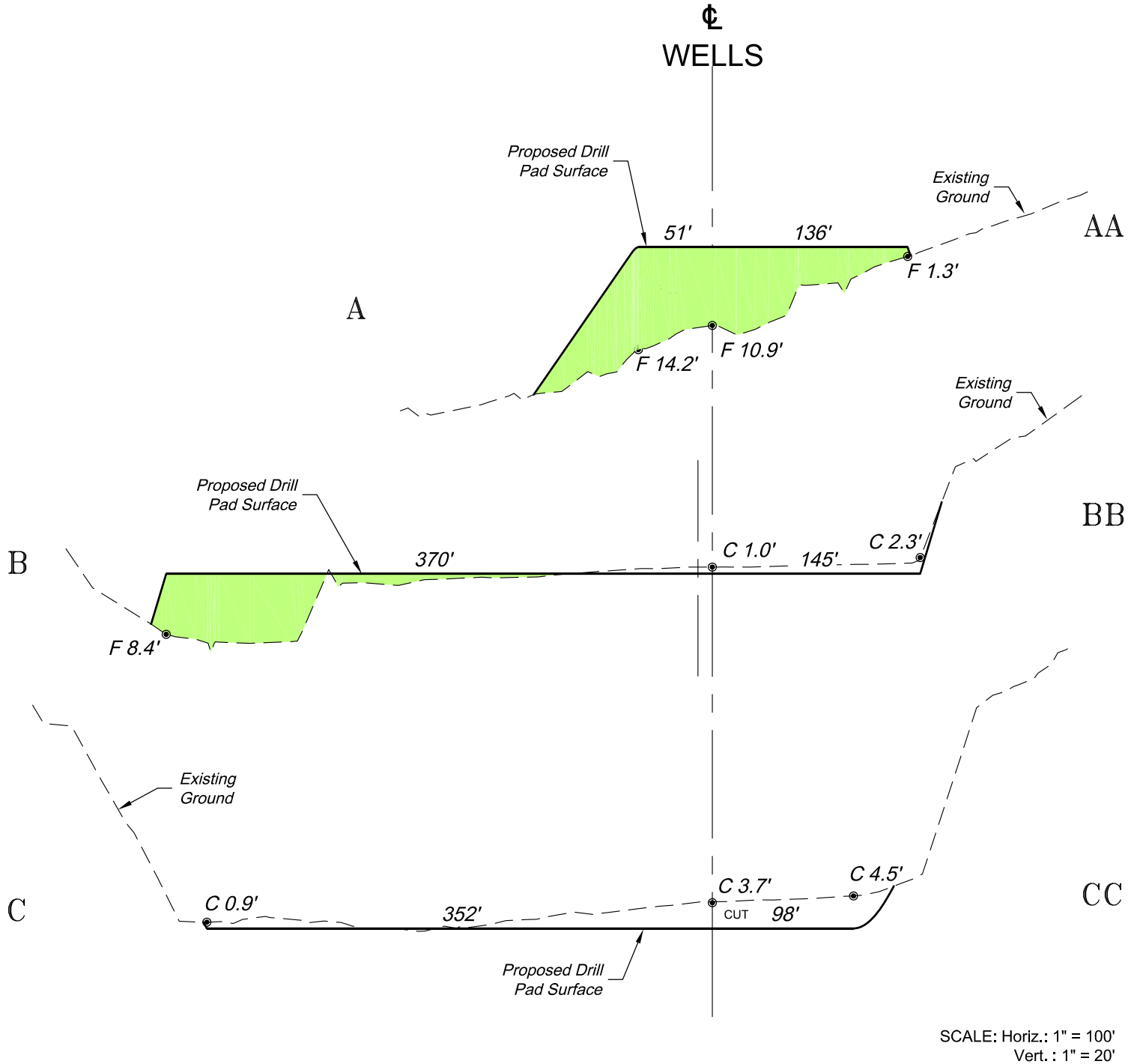
BOOKCLIFF
Survey Services, Inc.

SCALE: 1" = 100'
DATE: 4/15/16
PLAT: 2 of 7
PROJECT: Valley
DFT: cs

Construction Plan Prepared for:
WPX ENERGY

WPX Energy Rocky Mountain, LLC

SR 43-12 Drill Pad - Plat 2
CONSTRUCTION LAYOUT



*NOTE:
CUT SLOPES: 1.5:1
FILL SLOPES: 1.5:1,
UNLESS OTHERWISE NOTED.

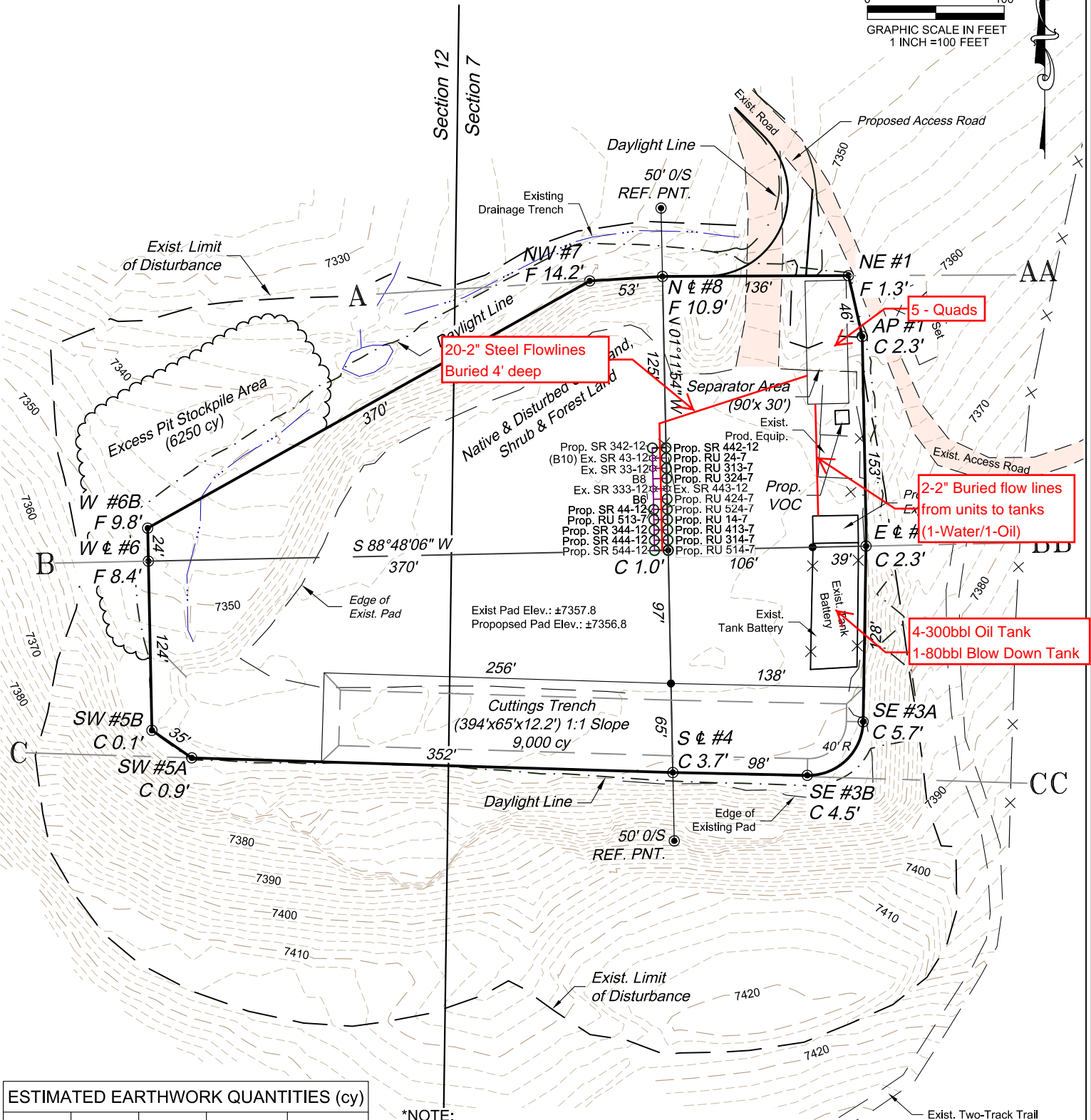
REVISED: 4/25/16

136 East Third Street
Rifle, Colorado 81650
Ph. (970) 625-2720
Fax (970) 625-2773



SCALE: As Noted
DATE: 4/15/16
PLAT: 3 of 7
PROJECT: Valley
DFT: cs

Construction Plan Prepared for:
WPX ENERGY
WPX Energy Rocky Mountain, LLC
SR 43-12 Drill Pad - Plat 3
CONSTRUCTION LAYOUT
CROSS SECTIONS



ESTIMATED EARTHWORK QUANTITIES (cy)				
ITEM	CUT	FILL	TOPSOIL	EXCESS
PAD	4350	12500	540	-8690
PIT	9000			9000
TOTALS	13350	12500	540	310

*NOTE:

- 1.) 10% Swell Factor Applied to Earthwork Cut Volume.
- 2.) Topsoil Volume Based on 12" Soil Depth.
- 3.) Total Disturbed Area = ± 7.71 ac.

REVISED: 4/25/16

136 East Third Street
Rifle, Colorado 81650
Ph. (970) 625-2720
Fax (970) 625-2773



BOOKCLIFF
Survey Services, Inc.

SCALE: 1" = 100'
DATE: 4/15/16
PLAT: 2 of 7
PROJECT: Valley
DFT: cs

Construction Plan Prepared for:
WPX ENERGY WPX Energy Rocky Mountain, LLC

SR 43-12 Drill Pad - Plat 2

Facility Layout Drawing