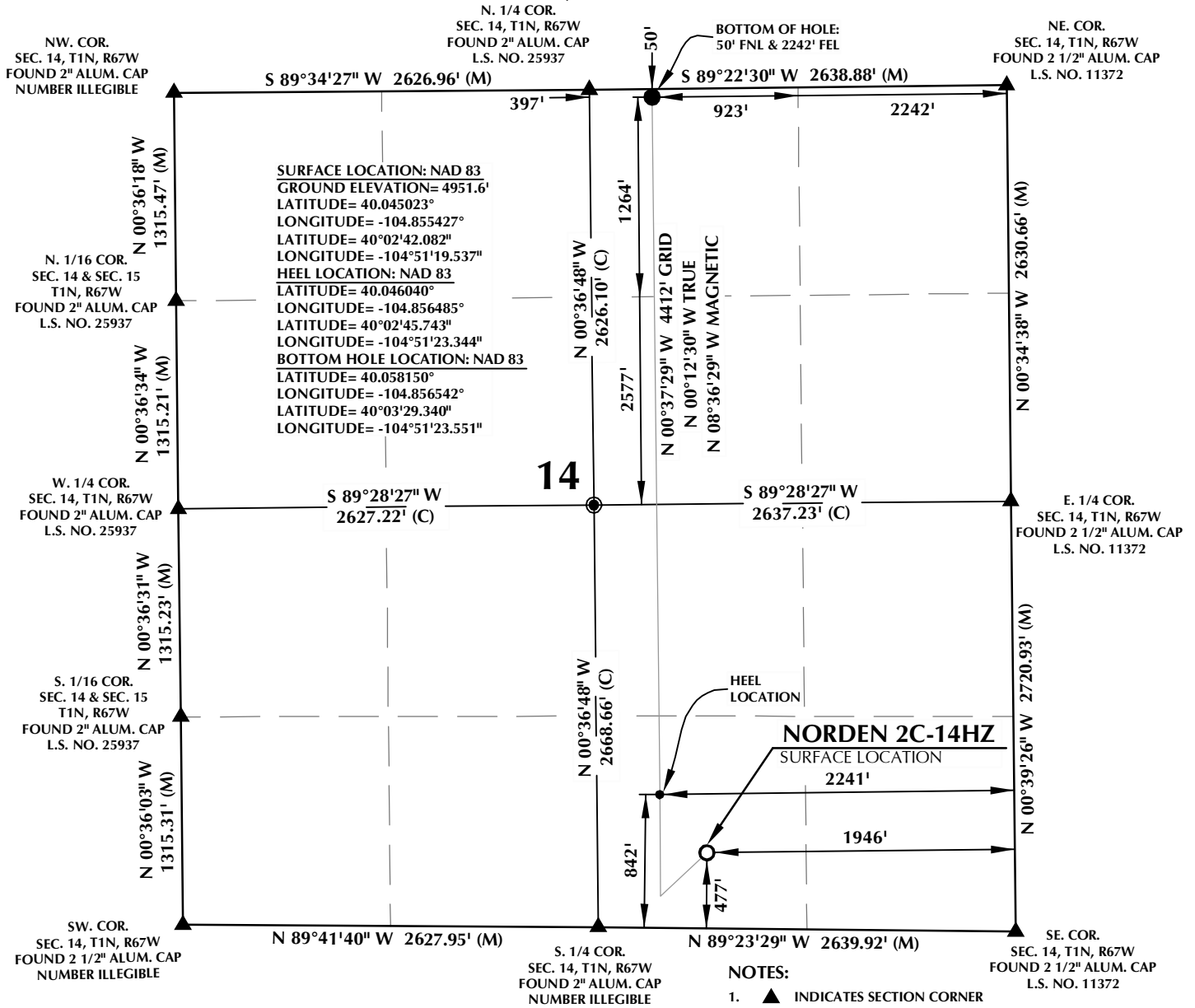


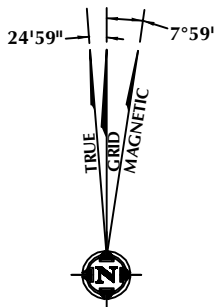
# T1N, R67W



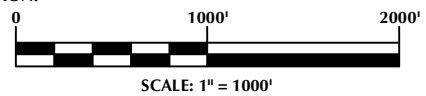
**SURFACE LOCATION: NAD 83**  
 GROUND ELEVATION= 4951.6'  
 LATITUDE= 40.045023°  
 LONGITUDE= -104.855427°  
 LATITUDE= 40°02'42.082"  
 LONGITUDE= -104°51'19.537"  
**HEEL LOCATION: NAD 83**  
 LATITUDE= 40.046040°  
 LONGITUDE= -104.856485°  
 LATITUDE= 40°02'45.743"  
 LONGITUDE= -104°51'23.344"  
**BOTTOM HOLE LOCATION: NAD 83**  
 LATITUDE= 40.058150°  
 LONGITUDE= -104.856542°  
 LATITUDE= 40°03'29.340"  
 LONGITUDE= -104°51'23.551"

**NOTES:**

- ▲ INDICATES SECTION CORNER
- INDICATES CALCULATED CORNER
- ELEVATION BASED ON NAVD88 (GEOID12B)
- BASIS OF BEARING DERIVED FROM COLORADO COORDINATE SYSTEM OF 1983 NORTH ZONE.
- ALL MEASURED DISTANCES ARE GRID. COMBINED SCALE FACTOR: .99972975
- OPERATOR: ROB WILSON / PDOP = 2.0
- SEE ADDENDUM TO WELL LOCATION CERTIFICATE FOR EXISTING IMPROVEMENTS WITHIN 500' OF THE WELL PAD.
- WELL FOOTAGES ARE MEASURED AT RIGHT ANGLES TO THE SECTION LINES.
- THE BOTTOM OF HOLE BEARS N00°37'29"W, 4412' FROM THE HEEL LOCATION.



**NOTE:**  
 MAGNETIC NORTH IS CURRENT AS OF 11/13/2015.  
 MAGNETIC NORTH CHANGES WEST 0'06" PER YEAR.



**CERTIFICATE OF SURVEYOR:**

THIS IS TO CERTIFY THAT THE ABOVE PLAT WAS PREPARED FROM FIELD NOTES OF ACTUAL SURVEY MADE BY ME OR UNDER MY SUPERVISION AND THAT THE SAME ARE TRUE AND CORRECT TO THE BEST OF MY KNOWLEDGE AND BELIEF. THIS CERTIFICATE DOES NOT REPRESENT A LAND SURVEY PLAT OR IMPROVEMENT SURVEY PLAT AS DEFINED BY C.R.S. 38-51-302 AND CANNOT BE RELIED UPON TO DETERMINE OWNERSHIP.

*Jacob I. Dunham*  
 JACOB I. DUNHAM  
 PROFESSIONAL LAND SURVEYOR  
 COLORADO REGISTRATION NUMBER 18459

**NOTICE:**  
 ACCORDING TO COLORADO STATE LAW YOU MUST COMMENCE ANY LEGAL ACTION BASED UPON ANY DEFECT IN THIS SURVEY WITHIN THREE YEARS AFTER YOU FIRST DISCOVER SUCH DEFECT. IN NO EVENT MAY ANY ACTION BASED UPON ANY DEFECT IN THIS SURVEY BE COMMENCED MORE THAN TEN YEARS FROM THE DATE ON THE CERTIFICATION SHOWN HEREON.

**WELL PAD - NORDEN 27N-14HZ**

**NORDEN 2C-14HZ**  
**WELL LOCATION CERTIFICATE**  
 477' FSL & 1946' FEL SWSE (SURFACE)  
 842' FSL & 2241' FEL SWSE (HEEL)  
 50' FNL & 2242' FEL NWNE (BOTTOM)  
 LOCATED IN SECTION 14  
 T1N, R67W, 6TH P.M.  
 WELD COUNTY, COLORADO

**Kerr-McGee Oil & Gas Onshore L.P.**

1099 18th Street  
 Denver, Colorado 80202

**609 CONSULTING, LLC**

**SHERIDAN OFFICE**  
 1095 Saberton Avenue  
 Sheridan, Wyoming 82801  
 Phone 307-674-0609

**LOVELAND OFFICE**  
 1635 Foxtrail Drive, Suite 204  
 Loveland, Colorado 80538  
 Phone 970-776-4331

DRAFTED BY:	LMO	CHECKED BY:	JJD
DATE DRAFTED:	11/18/15	DATE SURVEYED:	8/31/15
REVISED:		FILE NAME:	14-130

K:\ADARKO\2014\130\_NORDEN SEC. 14, T1N, R67W\PLAT\51\_NORDEN 27N-14HZ.dwg, 11/19/2015 8:17:13 AM, lba