



# Kerr-McGee Oil & Gas Onshore LP

A subsidiary of Anadarko Petroleum Corporation

1099 18<sup>th</sup> Street  
Denver, CO 80202  
720-929-6000

April 14, 2016

Matt Lepore  
Director, Colorado Oil and Gas Conservation Commission  
Department of Natural Resources  
The Chancery Building  
1120 Lincoln Street, Suite 801  
Denver, CO 80203

Re: **30 Day Certification Letter - 318A.e**  
NORDEN 2C-14HZ (Doc No. 401027662)  
Township 1 North, Range 67 West  
Section 14: SWSE  
Unit Acreage: 400 acres  
Unit Spacing: 01N67W Sec 14 W2E2, E2W2  
01N67W Sec 11 SESW, SWSE  
Weld County, Colorado

Dear Director Lepore:

Kerr McGee Oil and Gas Onshore LP (“KMG”) hereby certifies that KMG owns one hundred percent (100%) of the leasehold interest in the mineral rights in the proposed spacing unit. KMG hereby respectfully requests approval of this boundary well.

If you have any questions or issues regarding this permit, please contact our office.

Sincerely,

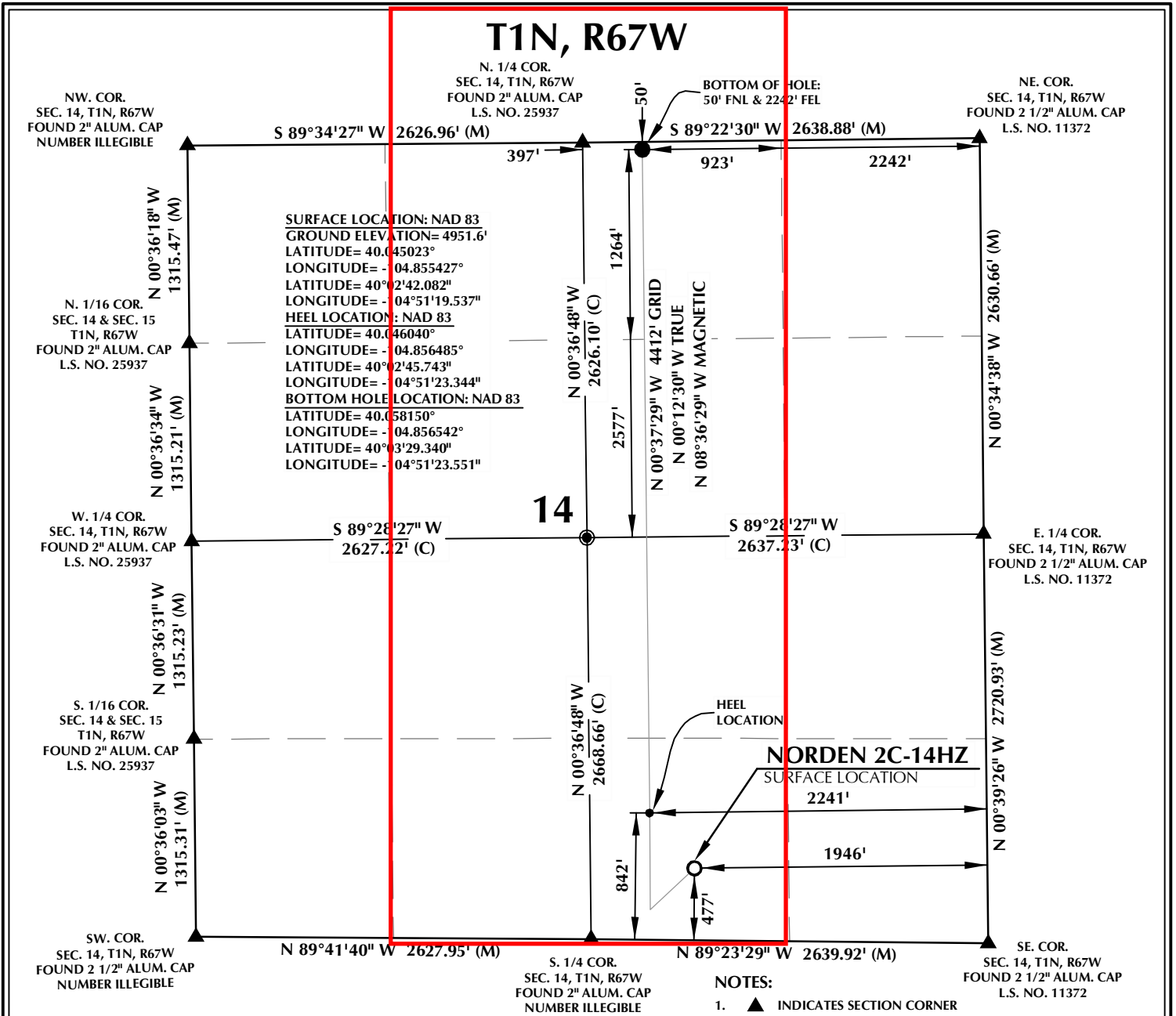
**Kerr-McGee Oil and Gas Onshore LP**

A handwritten signature in black ink that reads "Shayelyn Marshall".

Shayelyn Marshall  
Regulatory Analyst I

Enclosure

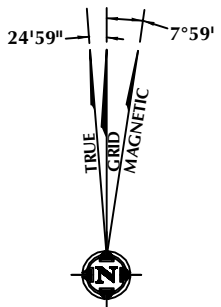
PROPOSED SPACING UNIT



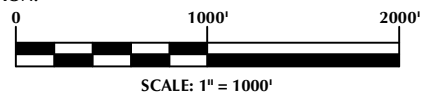
**SURFACE LOCATION: NAD 83**  
 GROUND ELEVATION= 4951.6'  
 LATITUDE= 40° 45'02.3"  
 LONGITUDE= - 104° 8'55.427"  
 LATITUDE= 40° 2'42.082"  
 LONGITUDE= - 104° 51'19.537"  
**HEEL LOCATION: NAD 83**  
 LATITUDE= 40° 46'04.0"  
 LONGITUDE= - 104° 8'56.485"  
 LATITUDE= 40° 2'45.743"  
 LONGITUDE= - 104° 51'23.344"  
**BOTTOM HOLE LOCATION: NAD 83**  
 LATITUDE= 40° 45'58.150"  
 LONGITUDE= - 104° 8'56.542"  
 LATITUDE= 40° 3'29.340"  
 LONGITUDE= - 104° 51'23.551"

NOTES:

- ▲ INDICATES SECTION CORNER
- INDICATES CALCULATED CORNER
- ELEVATION BASED ON NAVD88 (GEOID12B)
- BASIS OF BEARING DERIVED FROM COLORADO COORDINATE SYSTEM OF 1983 NORTH ZONE.
- ALL MEASURED DISTANCES ARE GRID. COMBINED SCALE FACTOR: .99972975
- OPERATOR: ROB WILSON / PDOP = 2.0
- SEE ADDENDUM TO WELL LOCATION CERTIFICATE FOR EXISTING IMPROVEMENTS WITHIN 500' OF THE WELL PAD.
- WELL FOOTAGES ARE MEASURED AT RIGHT ANGLES TO THE SECTION LINES.
- THE BOTTOM OF HOLE BEARS N00°37'29"W, 4412' FROM THE HEEL LOCATION.



NOTE: MAGNETIC NORTH IS CURRENT AS OF 11/13/2015. MAGNETIC NORTH CHANGES WEST 0°06' PER YEAR.



CERTIFICATE OF SURVEYOR:

THIS IS TO CERTIFY THAT THE ABOVE PLAT WAS PREPARED FROM FIELD NOTES OF ACTUAL SURVEY MADE BY ME OR UNDER MY SUPERVISION AND THAT THE SAME ARE TRUE AND CORRECT TO THE BEST OF MY KNOWLEDGE AND BELIEF. THIS CERTIFICATE DOES NOT REPRESENT A LAND SURVEY PLAT OR IMPROVEMENT SURVEY PLAT AS DEFINED BY C.R.S. 38-51-302 AND CANNOT BE RELIED UPON TO DETERMINE OWNERSHIP.

*Jacob I. Dunham*  
 JACOB I. DUNHAM  
 PROFESSIONAL LAND SURVEYOR  
 COLORADO REGISTRATION NUMBER 18459

NOTICE: ACCORDING TO COLORADO STATE LAW YOU MUST COMMENCE ANY LEGAL ACTION BASED UPON ANY DEFECT IN THIS SURVEY WITHIN THREE YEARS AFTER YOU FIRST DISCOVER SUCH DEFECT. IN NO EVENT MAY ANY ACTION BASED UPON ANY DEFECT IN THIS SURVEY BE COMMENCED MORE THAN TEN YEARS FROM THE DATE ON THE CERTIFICATION SHOWN HEREON.

**WELL PAD - NORDEN 27N-14HZ**

NORDEN 2C-14HZ  
 WELL LOCATION CERTIFICATE  
 477' FSL & 1946' FEL SWSE (SURFACE)  
 842' FSL & 2241' FEL SWSE (HEEL)  
 50' FNL & 2242' FEL NWNE (BOTTOM)  
 LOCATED IN SECTION 14  
 T1N, R67W, 6TH P.M.  
 WELD COUNTY, COLORADO

**Kerr-McGee Oil & Gas Onshore L.P.**

1099 18th Street  
 Denver, Colorado 80202

**609 CONSULTING, LLC**

SHERIDAN OFFICE: 1095 Saberton Avenue, Sheridan, Wyoming 82801, Phone 307-674-0609  
 LOVELAND OFFICE: 1635 Foxtrail Drive, Suite 204, Loveland, Colorado 80538, Phone 970-776-4331

DRAFTED BY: LMO	CHECKED BY: JID
DATE DRAFTED: 11/18/15	DATE SURVEYED: 8/31/15
REVISED:	FILE NAME: 14-130

K:\ADAR\KOV2014\2014\_130\_NORDEN SEC. 14, T1N, R67W\PLAT\51-NORDEN 27N-14HZ.dwg, 11/19/2015 8:17:13 AM, lba