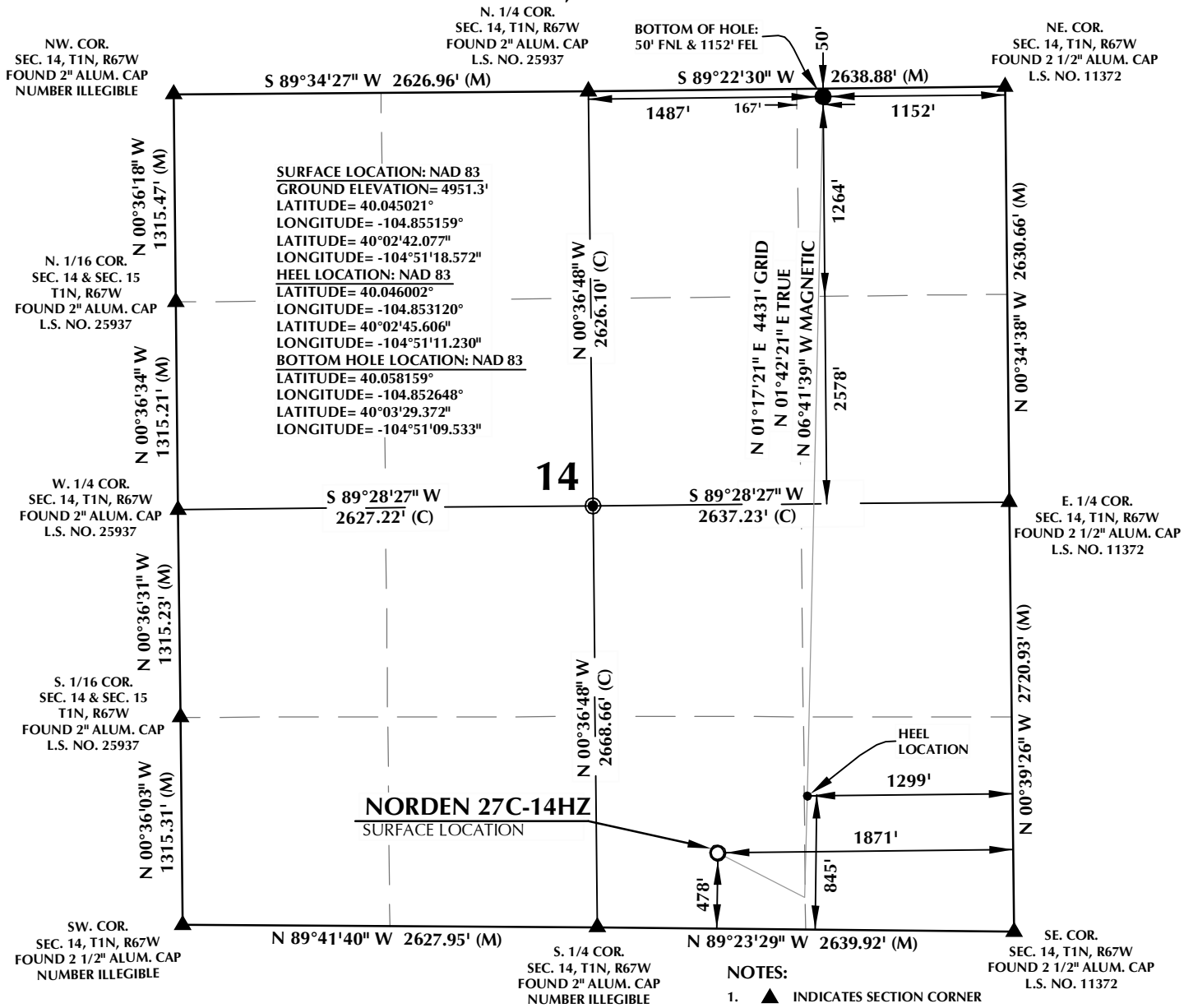


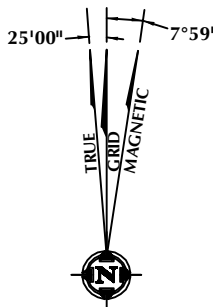
T1N, R67W



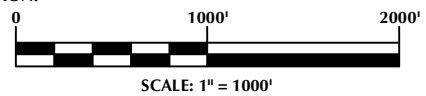
CERTIFICATE OF SURVEYOR:

THIS IS TO CERTIFY THAT THE ABOVE PLAT WAS PREPARED FROM FIELD NOTES OF ACTUAL SURVEY MADE BY ME OR UNDER MY SUPERVISION AND THAT THE SAME ARE TRUE AND CORRECT TO THE BEST OF MY KNOWLEDGE AND BELIEF. THIS CERTIFICATE DOES NOT REPRESENT A LAND SURVEY PLAT OR IMPROVEMENT SURVEY PLAT AS DEFINED BY C.R.S. 38-51-302 AND CANNOT BE RELIED UPON TO DETERMINE OWNERSHIP.

Jacob I. Dunham
 JACOB I. DUNHAM
 PROFESSIONAL LAND SURVEYOR
 COLORADO REGISTRATION NUMBER 18459



NOTE:
 MAGNETIC NORTH IS CURRENT AS OF 11/13/2015.
 MAGNETIC NORTH CHANGES WEST 0'06" PER YEAR.



WELL PAD - NORDEN 27N-14HZ

NORDEN 27C-14HZ
WELL LOCATION CERTIFICATE
 478' FSL & 1871' FEL SWSE (SURFACE)
 845' FSL & 1299' FEL SESE (HEEL)
 50' FNL & 1152' FEL NENE (BOTTOM)
 LOCATED IN SECTION 14
 T1N, R67W, 6TH P.M.
 WELD COUNTY, COLORADO

Kerr-McGee Oil & Gas Onshore L.P.
 1099 18th Street
 Denver, Colorado 80202



CONSULTING, LLC

SHERIDAN OFFICE
 1095 Saberton Avenue
 Sheridan, Wyoming 82801
 Phone 307-674-0609

LOVELAND OFFICE
 1635 Foxtrail Drive, Suite 204
 Loveland, Colorado 80538
 Phone 970-776-4331

DRAFTED BY:	LMO	CHECKED BY:	JID
DATE DRAFTED:	11/18/15	DATE SURVEYED:	8/31/15
REVISED:		FILE NAME:	14-130