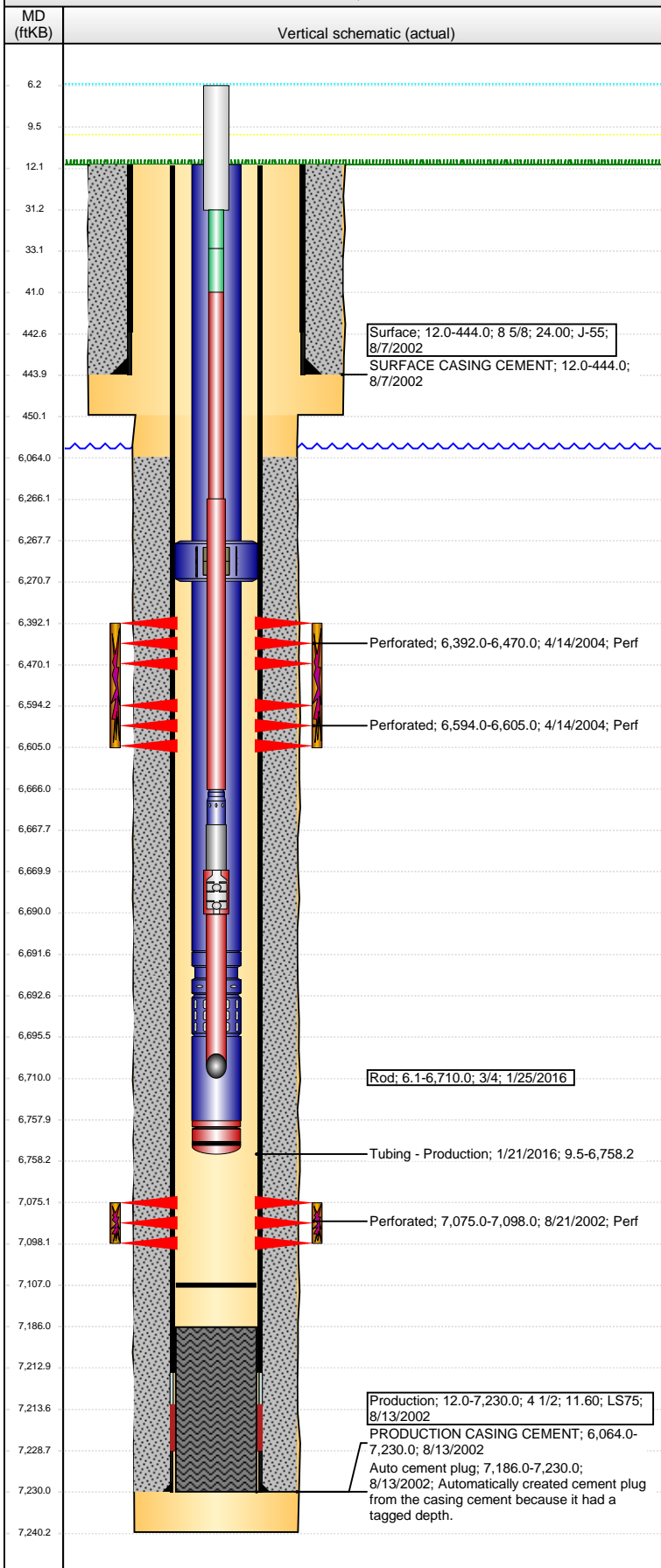


Well Name: CERVI 11-23

VERTICAL - ORIGINAL HOLE, 5/18/2016 10:33:00 AM



Well Header

API 05-123-21029	Business Unit DJ BASIN	District 15	Well Config VERTICAL
Original KB Elevation (ft) 4,732	KB - GL / MSL (ftKB) 12.00	Spud Date 8/7/2002	P & A Date

Comment

CIBP PUSED TO 7107' 5/30/07

Directions To Well

HWY 34 & WCR 69, EAST 0.1, SOUTH 1.4 MILES, EAST IN TO. GATE (2010)

Congressional Location

Quarter 1	Quarter 2	Quarter 3	Quarter 4	Section	Township	Twnshp N...	Range	Rng E/W Dir
		NW	NW	23	4	N	63	W

Bottom Hole Location

North-South Distance (ft)	From N or S Line	East-West Distance (ft)	From E or W Line

Plug Back Total Depths

Date	Depth (ftKB)	Method	Com
8/13/2002	7,213.0	CASING TALLY	TOP OF FLOAT COLLAR
8/21/2002	7,186.0	CASED HOLE LOG	DEPTH LOGGER ON CBL
10/26/2009	7,107.0	TUBING TALLY	
3/16/2011	7,107.0	TBG TALLY	believe plug was pushed to here.

Wellbore Sections

Section Des	Size (in)	Act Top, MD (ftKB)	Act Btm, MD (ftKB)
SURFACE	12 1/4	12.0	450.0
PRODUCTION	7 7/8	450.0	7,240.0

Zone Statuses

Zone Name	Status Date	Status	Fluid Type	Job	Prod Method
J SAND	9/17/2002	PR	Gas	DRILLING/CO...	
J SAND	4/14/2004	SI		RECOMPLETI...	
J SAND	6/7/2007	PR	Gas	TUBING INSTA...	
CODELL	4/23/2004	PR	Gas	RECOMPLETI...	
CODELL	6/4/2007	PR	Gas	TUBING INSTA...	
NIORARA	4/23/2004	PR	Gas	RECOMPLETI...	
NIORARA	6/4/2007	PR	Gas	TUBING INSTA...	

Casing Strings

Surface, 444.0ftKB

Casing Description	Run Date	OD (in)	Wt/Len (l...	Grade	Top, MD (ft...	MD (ftKB)
Surface	8/7/2002	8 5/8	24.00	J-55	12.0	444.0

Production, 7,230.0ftKB

Casing Description	Run Date	OD (in)	Wt/Len (l...	Grade	Top, MD (ft...	MD (ftKB)
Production	8/13/2002	4 1/2	11.60	LS75	12.0	7,230.0

Cement

Description	Top Depth (ftKB)	Bottom Depth (ftKB)
SURFACE CASING CEMENT	12.0	444.0
Description	Top Depth (ftKB)	Bottom Depth (ftKB)
PRODUCTION CASING CEMENT	6,064.0	7,230.0

Tubing Strings

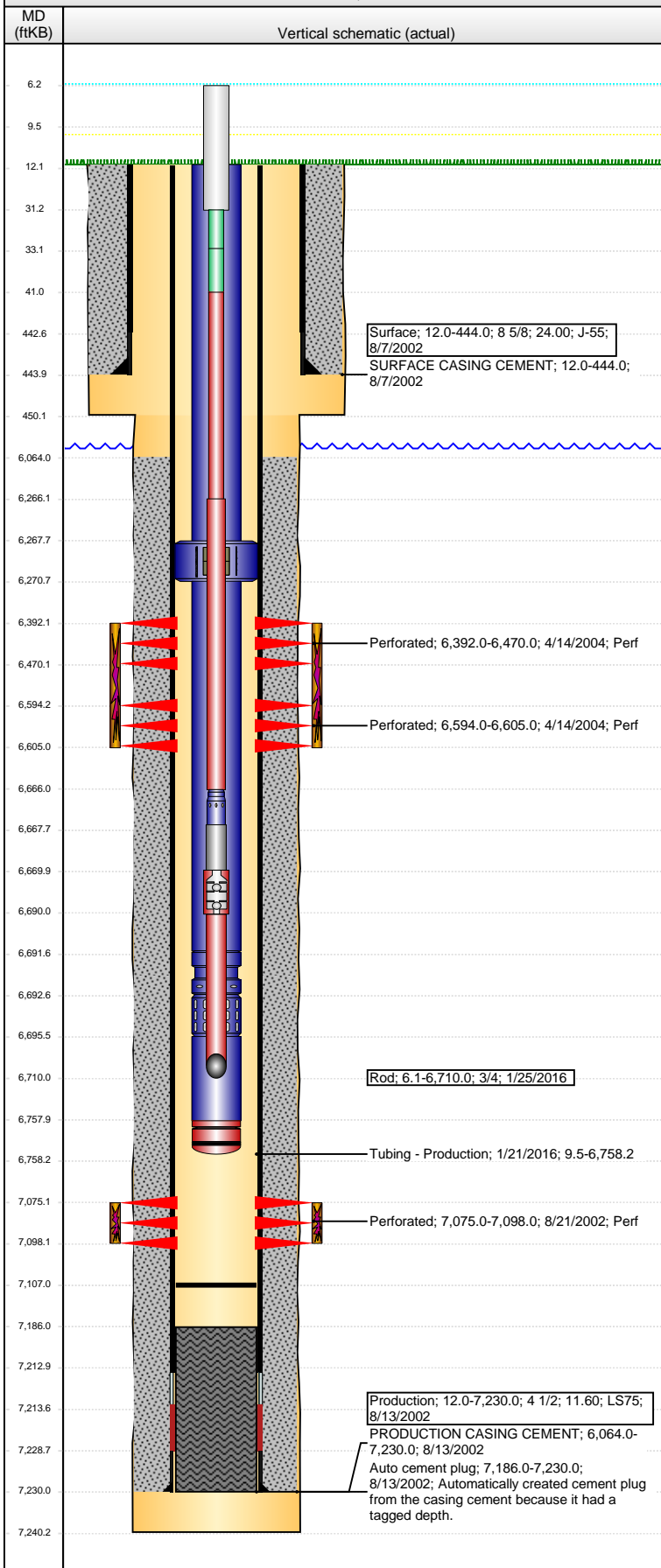
Tubing Description	Run Date	String...	ID (in)	Wt (lb/ft)	Grade	Len (ft)	Set De...
Tubing - Production	5/31/2007	2 3/8	1.995	4.70	J-55	7,056.00	
Tubing Description	Run Date	String...	ID (in)	Wt (lb/ft)	Grade	Len (ft)	Set De...
Tubing - Production	10/26/2009	2 3/8	1.995	4.70	J-55	7,055.43	
Tubing Description	Run Date	String...	ID (in)	Wt (lb/ft)	Grade	Len (ft)	Set De...
Tubing - Production	3/16/2011	2 3/8	1.995	4.70	J-55	6,568.91	
Tubing Description	Run Date	String...	ID (in)	Wt (lb/ft)	Grade	Len (ft)	Set De...
Tubing - Production	1/21/2016	2 3/8	1.995	4.70	J-55	6,748.66	

Tubing Components

Item Des	OD (in)	Wt (lb/ft)	Grade	Jts	Len (ft)	Btm (ftKB)	Btm (TVD) (ftKB)
Stretch Correction				1	2.50	12.0	
EUE 8rd Tubing	2 3/8	4.70	J-55	193	6,255.83	6,267.8	
Anchor/catcher	3.99	4.70	J-55	1	2.90	6,270.7	
EUE 8rd Tubing	2 3/8	4.70	J-55	13	420.77	6,691.5	
Pump Seating Nipple	2 3/8	1.10		1	1.10	6,692.6	

Well Name: CERVI 11-23

VERTICAL - ORIGINAL HOLE, 5/18/2016 10:33:03 AM



Tubing Components							
Item Des	OD (in)	Wt (lb/ft)	Grade	Jts	Len (ft)	Btm (ftKB)	Btm (TVD) (ftKB)
PERF SUB	2 3/8	4.70	J-55	1	3.00	6,695.6	
EUE 8rd Tubing	2 3/8	4.70	J-55	2	62.11	6,757.7	
Bull Plug	2 3/8			1	0.45	6,758.2	
Rods & Pumps							
Rod Description				Run Date		Set Depth (ftKB)	
Rod				1/25/2016		6,710.0	
Comment							
Item Description				OD Nominal (in)	Joints	Length (ft)	
Polished Rod				1 1/4	1	25.00	
Item Description				OD Nominal (in)	Joints	Length (ft)	
Pony Rod				3/4	1	2.00	
Item Description				OD Nominal (in)	Joints	Length (ft)	
Pony Rod				3/4	1	8.00	
Item Description				OD Nominal (in)	Joints	Length (ft)	
Sucker Rod				3/4	249	6,225.00	
Item Description				OD Nominal (in)	Joints	Length (ft)	
Sucker Rod				7/8	16	400.00	
Item Description				OD Nominal (in)	Joints	Length (ft)	
Shear Coupling				7/8	1	1.40	
Item Description				OD Nominal (in)	Joints	Length (ft)	
Stabilizer Bar				1	1	2.50	
Item Description				OD Nominal (in)	Joints	Length (ft)	
Rod Pump				1 1/4	1	20.00	
API Pump Type		Barrel Length (ft)		Seating Assembly Type			
R		16.00		C			
Item Description				OD Nominal (in)	Joints	Length (ft)	
Dip Tube				1	1	20.00	
Perforation Data							
Zone	Bnch/St g	Entered Shot Total	Top (ftKB)	Btm (ftKB)	Date		
NIOBRARA, ORIGINAL HOLE		44	6,392.00	6,470.00	4/14/2004		
CODELL, ORIGINAL HOLE		44	6,594.00	6,605.00	4/14/2004		
J SAND, ORIGINAL HOLE		60	7,075.00	7,098.00	8/21/2002		
Stimulations & Treatments							
Date	Zone			Primary Job Type			
8/22/2002	J SAND, ORIGINAL HOLE			DRILLING/COMPLETION - ORIGINAL			
Technical Result		Tech Result Details			Tech Result Note		
Comment							
Date	Zone			Primary Job Type			
4/15/2004	NIOBRARA-CODELL, ORIGINAL HOLE			RECOMPLETION			
Technical Result		Tech Result Details			Tech Result Note		
Comment							
LIMITED ENTRY FRAC							
washed out 3 chokes (18,16,14) in 3 hrs, switch to 12							
Other In Hole							
Run Date	Des				OD (in)	Top (ftKB)	Btm (ftKB)
Logs							
Date	Type				Top, MD (ftKB)	Btm, MD (ftKB)	
8/13/2002	COMPENSATED DENSITY				450.0	7,240.0	
8/21/2002	CBL/CCL/GR				5,811.0	7,181.0	