

T1N, R67W

N. 1/4 COR.
SEC. 14, T1N, R67W
FOUND 2" ALUM. CAP
L.S. NO. 25937

NE. COR.
SEC. 14, T1N, R67W
FOUND 2 1/2" ALUM. CAP
L.S. NO. 11372

NW. COR.
SEC. 14, T1N, R67W
FOUND 2" ALUM. CAP
NUMBER ILLEGIBLE

N. 1/16 COR.
SEC. 14 & SEC. 15
T1N, R67W
FOUND 2" ALUM. CAP
L.S. NO. 25937

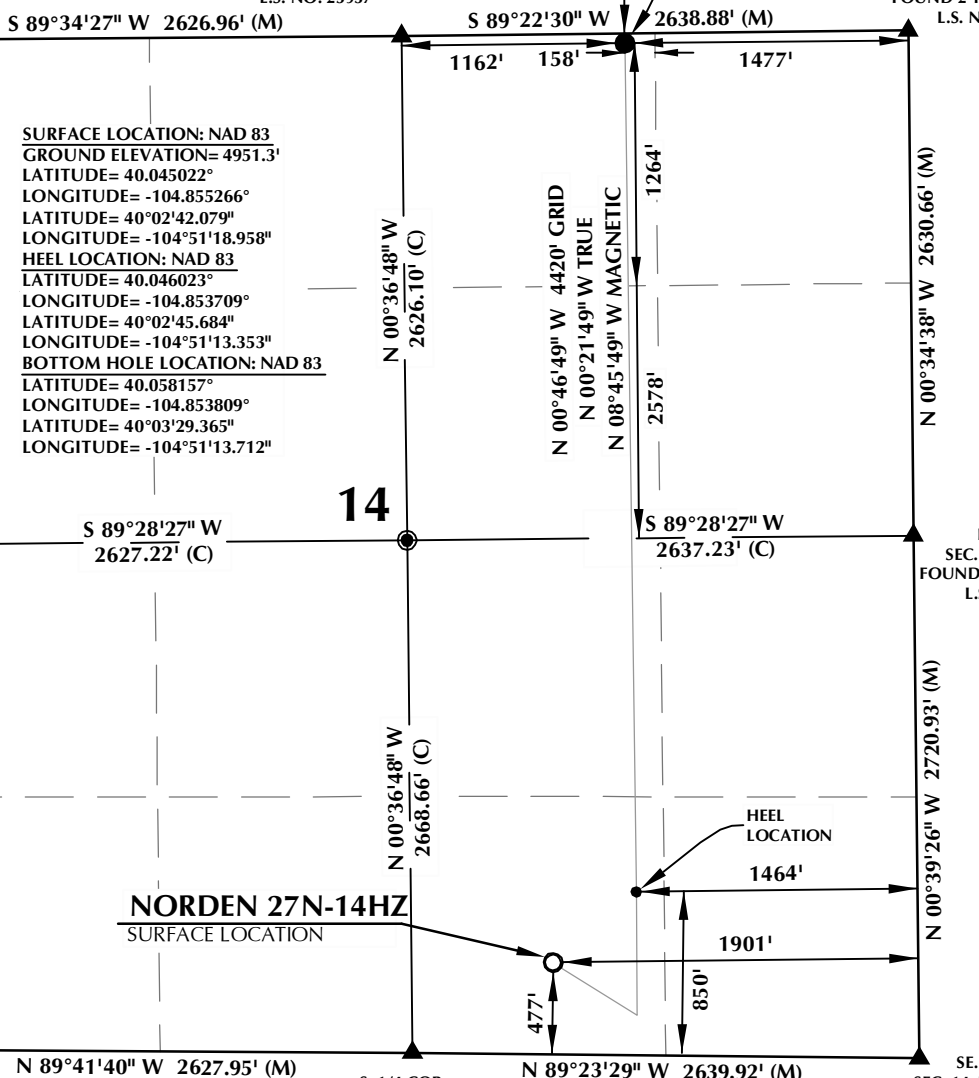
W. 1/4 COR.
SEC. 14, T1N, R67W
FOUND 2" ALUM. CAP
L.S. NO. 25937

S. 1/16 COR.
SEC. 14 & SEC. 15
T1N, R67W
FOUND 2" ALUM. CAP
L.S. NO. 25937

SW. COR.
SEC. 14, T1N, R67W
FOUND 2 1/2" ALUM. CAP
NUMBER ILLEGIBLE

S. 1/4 COR.
SEC. 14, T1N, R67W
FOUND 2" ALUM. CAP
NUMBER ILLEGIBLE

SE. COR.
SEC. 14, T1N, R67W
FOUND 2 1/2" ALUM. CAP
L.S. NO. 11372

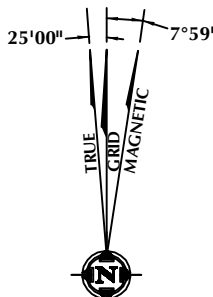


SURFACE LOCATION: NAD 83
GROUND ELEVATION= 4951.3'
LATITUDE= -104.855266°
LONGITUDE= -104.855266°
LATITUDE= 40°02'42.079"
LONGITUDE= -104°51'18.958"
HEEL LOCATION: NAD 83
LATITUDE= 40.046023°
LONGITUDE= -104.853709°
LATITUDE= 40°02'45.684"
LONGITUDE= -104°51'13.353"
BOTTOM HOLE LOCATION: NAD 83
LATITUDE= 40.058157°
LONGITUDE= -104.853809°
LATITUDE= 40°03'29.365"
LONGITUDE= -104°51'13.712"

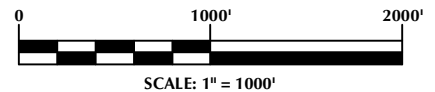
NORDEN 27N-14HZ
SURFACE LOCATION

NOTES:

- ▲ INDICATES SECTION CORNER
- INDICATES CALCULATED CORNER
- ELEVATION BASED ON NAVD88 (GEOID12B)
- BASIS OF BEARING DERIVED FROM COLORADO COORDINATE SYSTEM OF 1983 NORTH ZONE.
- ALL MEASURED DISTANCES ARE GRID. COMBINED SCALE FACTOR: .99972975
- OPERATOR: ROB WILSON / PDOP = 1.4
- SEE ADDENDUM TO WELL LOCATION CERTIFICATE FOR EXISTING IMPROVEMENTS WITHIN 500' OF THE WELL PAD.
- WELL FOOTAGES ARE MEASURED AT RIGHT ANGLES TO THE SECTION LINES.
- THE BOTTOM OF HOLE BEARS N00°46'49"W, 4420' FROM THE HEEL LOCATION.



NOTE:
MAGNETIC NORTH IS CURRENT AS OF 11/13/2015.
MAGNETIC NORTH CHANGES WEST 0°06' PER YEAR.



CERTIFICATE OF SURVEYOR:

THIS IS TO CERTIFY THAT THE ABOVE PLAT WAS PREPARED FROM FIELD NOTES OF ACTUAL SURVEY MADE BY ME OR UNDER MY SUPERVISION AND THAT THE SAME ARE TRUE AND CORRECT TO THE BEST OF MY KNOWLEDGE AND BELIEF. THIS CERTIFICATE DOES NOT REPRESENT A LAND SURVEY PLAT OR IMPROVEMENT SURVEY PLAT AS DEFINED BY C.R.S. 38-51-302 AND CANNOT BE RELIED UPON TO DETERMINE OWNERSHIP.

Jacob I. Dunham
JACOB I. DUNHAM
PROFESSIONAL LAND SURVEYOR
COLORADO REGISTRATION NUMBER 18459

NOTICE:
ACCORDING TO COLORADO STATE LAW YOU MUST COMMENCE ANY LEGAL ACTION BASED UPON ANY DEFECT IN THIS SURVEY WITHIN THREE YEARS AFTER YOU FIRST DISCOVER SUCH DEFECT. IN NO EVENT MAY ANY ACTION BASED UPON ANY DEFECT IN THIS SURVEY BE COMMENCED MORE THAN TEN YEARS FROM THE DATE ON THE CERTIFICATION SHOWN HEREON.

WELL PAD - NORDEN 27N-14HZ

NORDEN 27N-14HZ
WELL LOCATION CERTIFICATE
477' FSL & 1901' FEL SWSE (SURFACE)
850' FSL & 1464' FEL SWSE (HEEL)
50' FNL & 1477' FEL NWNE (BOTTOM)
LOCATED IN SECTION 14
T1N, R67W, 6TH P.M.
WELD COUNTY, COLORADO

Kerr-McGee Oil & Gas Onshore L.P.
1099 18th Street
Denver, Colorado 80202



CONSULTING, LLC

SHERIDAN OFFICE
1095 Saberton Avenue
Sheridan, Wyoming 82801
Phone 307-674-0609

LOVELAND OFFICE
1635 Foxtrail Drive, Suite 204
Loveland, Colorado 80538
Phone 970-776-4331

DRAFTED BY:	LMO	CHECKED BY:	JID
DATE DRAFTED:	11/18/15	DATE SURVEYED:	8/31/15
REVISED:	12/2/15	FILE NAME:	14-130

K:\WADARCO\2014\14_130_NORDEN_SEC.14_T1N_R67W\PLAT\5_NORDEN_27N-14HZ.dwg, 12/2/2015 12:50:07 PM, sheet 1