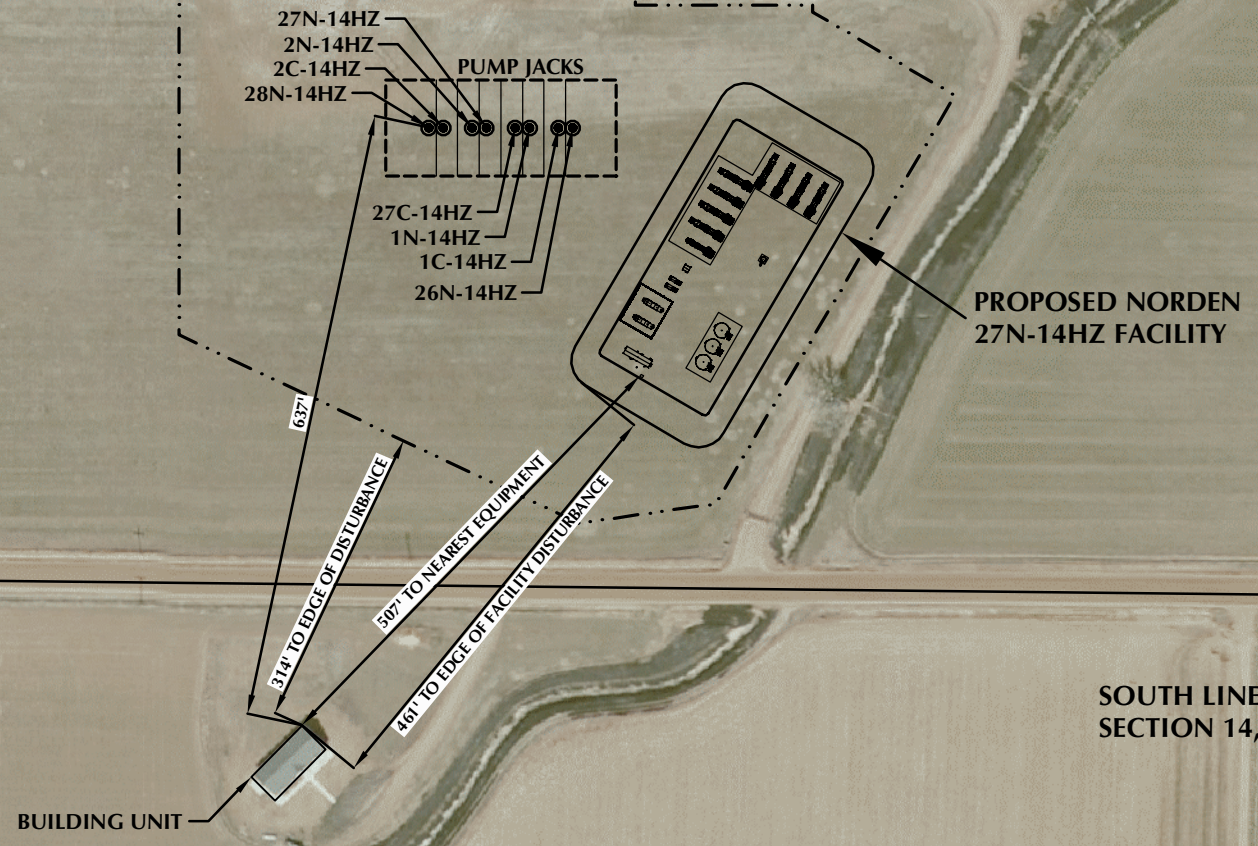
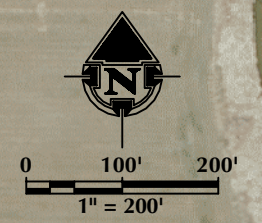


WEST LINE OF SE 1/4 SECTION 14, T1N, R67W

OPERATIONAL DISTURBANCE AREA



SOUTH LINE OF SECTION 14, T1N, R67W



NOTES:
1. EQUIPMENT PLACEMENT IS APPROXIMATE AND SUBJECT TO MINOR MODIFICATION DUE TO SPECIFIC CIRCUMSTANCES.

DATA SOURCES:
- AERIAL COURTESY OF ESRI, INC.
- WATER WELLS COURTESY OF COLORADO DIVISION OF WATER RESOURCES

609 CONSULTING, LLC
LOVELAND OFFICE
1635 Foxtrail Drive, Suite 204
Loveland, Colorado 80538
Phone 970-776-4331
SHERIDAN OFFICE
1095 Saberton Avenue
Sheridan, Wyoming 82801
Phone 307-674-0609

Anadarko
Petroleum Corporation
1099 18th Street
Denver, CO 80202

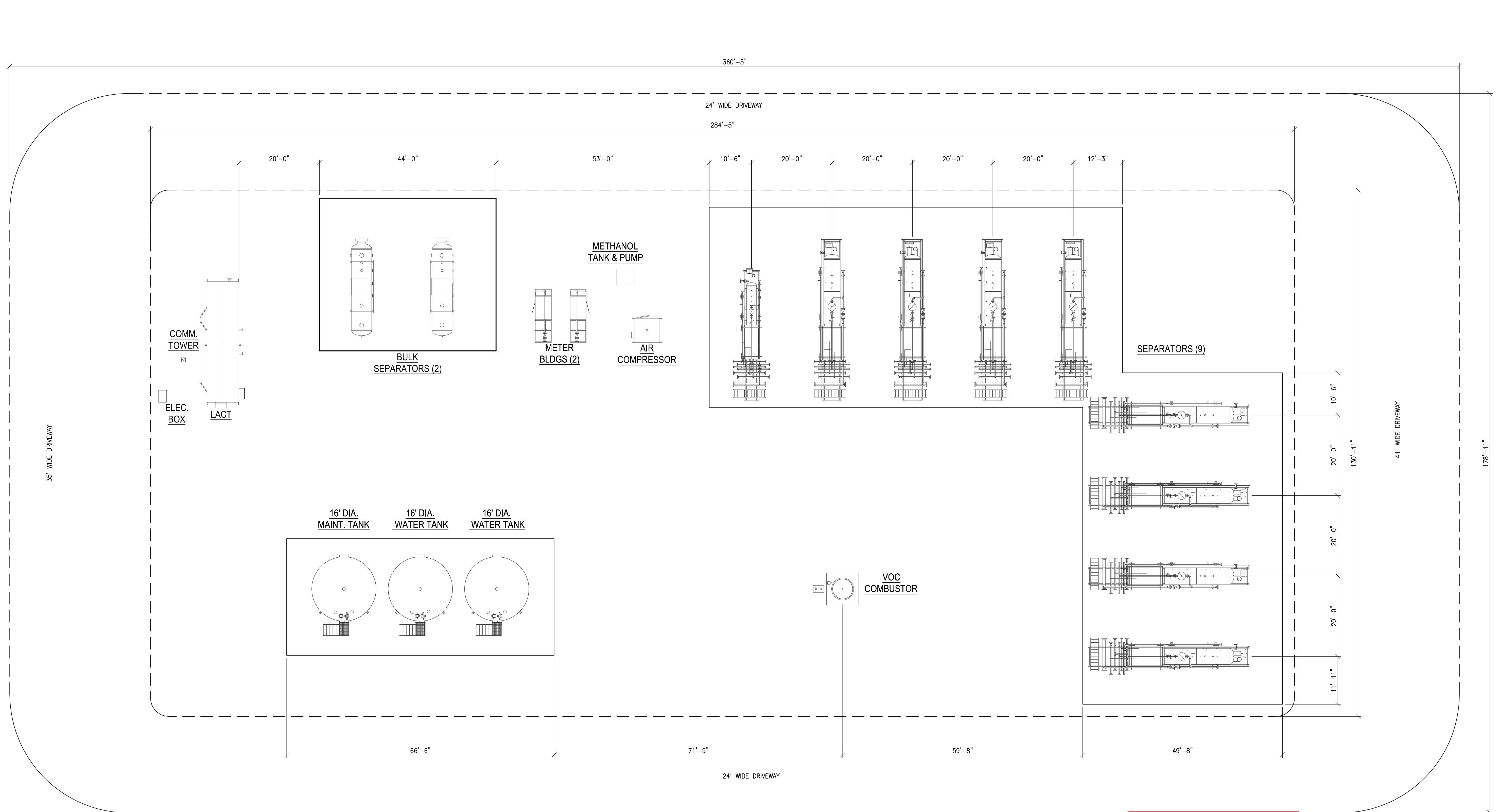
SCALE: 1" = 200'
DATE SURVEYED: 8/31/15
DATE: 11/18/15
DRAFTER: RAL
REVISED: 2/23/16

FACILITY LAYOUT AERIAL
NORDEN 27N-14HZ
LOCATED IN SECTION 14, T1N, R67W, 6TH P.M.
WELD COUNTY, COLORADO

K:\ANADARKO\2014\2014_130_NORDEN_SEC_14_T1N_R67W\DWG\LOCATION DRAWING\NORDEN LOC.dwg, 2/23/2016 9:30:51 AM, shen

THIS DRAWING AND THE DESIGN IT COVERS ARE CONFIDENTIAL AND REMAIN THE PROPERTY OF ANADARKO PETROLEUM CORPORATION AND SHALL NOT BE DISCLOSED TO OTHERS OR REPRODUCED IN ANY MANNER OR USED FOR ANY PURPOSE WHATSOEVER EXCEPT BY WRITTEN PERMISSION BY THE OWNER.

FILE LOCATION: N:\Projects\Norden\Drawings\Permit - \CAD Drawings\20638-STOR-01-PP-2020 REV 1.dwg LAST SAVED: 2/18/2016 8:56:56 AM



ISSUED FOR PERMIT

NOTES:

REFERENCE DRAWINGS		REVISIONS			
DWG. NO.	TITLE	NO.	DESCRIPTION	DATE	DATE
		1	RE-ISSUED FOR PERMIT	2/18/16	2/18/16
		0	ISSUED FOR PERMIT	8/18/15	8/18/15

NORDEN

PERMIT PLOT PLAN PRODUCTION FACILITY W/ EQUIPMENT LOCATIONS		
DRAWN BY: GRT	CREATION DATE: 8/12/15	AFE No.:
APPROVED: RWG	APPR. DATE: -	
DWG. No.:	X20638-STOR-01-PP-2020	
SCALE: (3/32"=1'-0")	SHEET No.:	1 OF 1