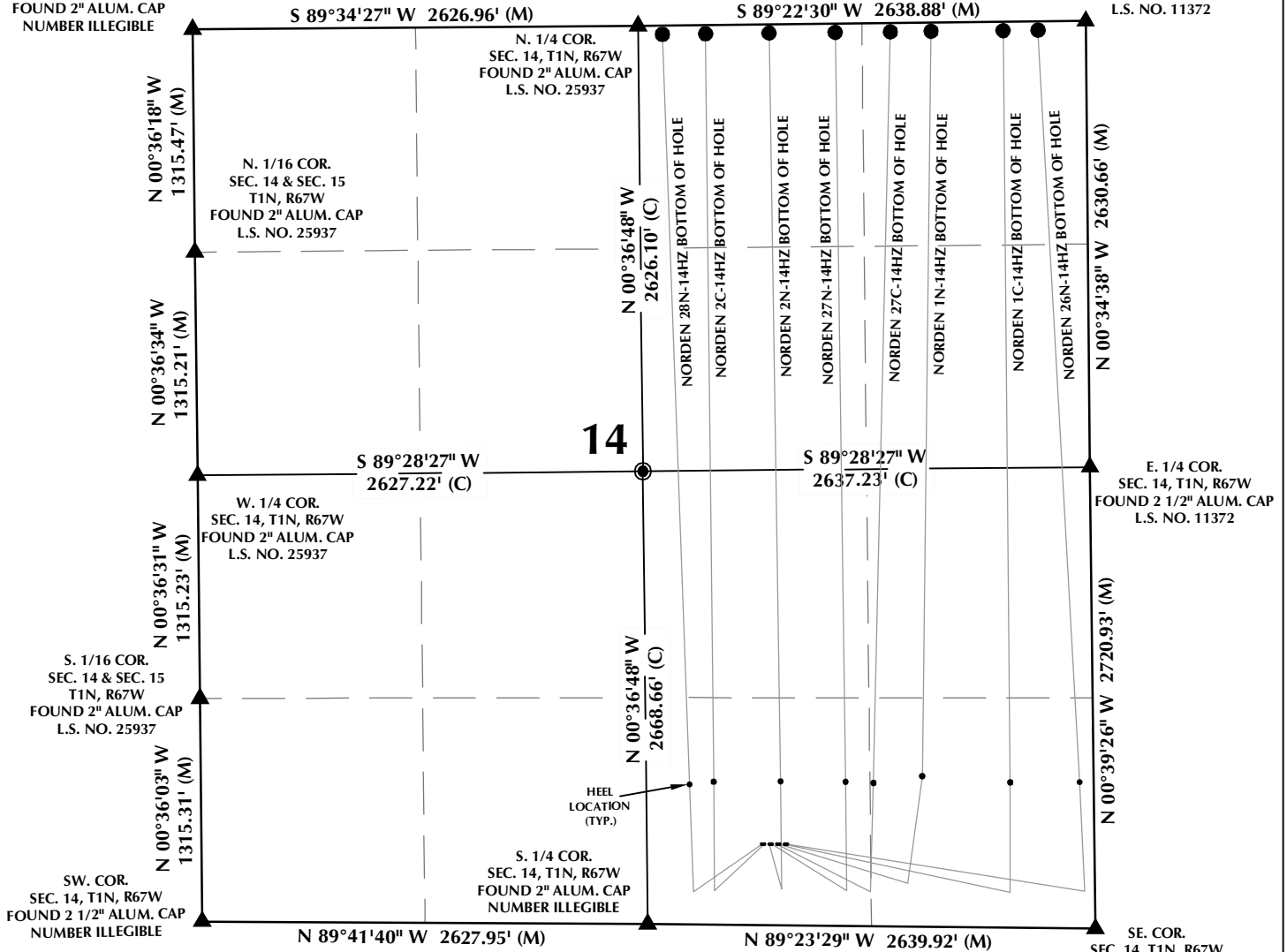


# MULTI-WELL PLAN SECTION 14, T1N, R67W

NW. COR.  
SEC. 14, T1N, R67W  
FOUND 2" ALUM. CAP  
NUMBER ILLEGIBLE

NE. COR.  
SEC. 14, T1N, R67W  
FOUND 2 1/2" ALUM. CAP  
L.S. NO. 11372



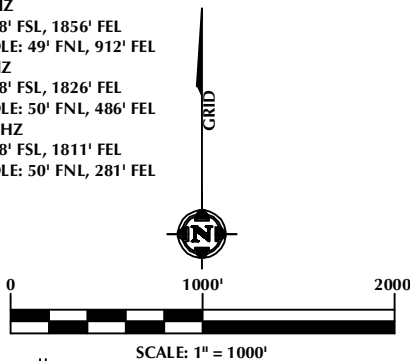
**WELL NOTES:**

- NORDEN 28N-14HZ  
SURFACE: 477' FSL, 1961' FEL  
BOTTOM HOLE: 50' FNL, 2497' FEL
- NORDEN 2C-14HZ  
SURFACE: 477' FSL, 1946' FEL  
BOTTOM HOLE: 50' FNL, 2242' FEL
- NORDEN 2N-14HZ  
SURFACE: 477' FSL, 1916' FEL  
BOTTOM HOLE: 50' FNL, 1867' FEL
- NORDEN 27N-14HZ  
SURFACE: 477' FSL, 1901' FEL  
BOTTOM HOLE: 50' FNL, 1477' FEL
- NORDEN 27C-14HZ  
SURFACE: 478' FSL, 1871' FEL  
BOTTOM HOLE: 50' FNL, 1152' FEL

- NORDEN 1N-14HZ  
SURFACE: 478' FSL, 1856' FEL  
BOTTOM HOLE: 49' FNL, 912' FEL
- NORDEN 1C-14HZ  
SURFACE: 478' FSL, 1826' FEL  
BOTTOM HOLE: 50' FNL, 486' FEL
- NORDEN 26N-14HZ  
SURFACE: 478' FSL, 1811' FEL  
BOTTOM HOLE: 50' FNL, 281' FEL

**NOTES:**

1. ▲ INDICATES SECTION CORNER
2. ● INDICATES CALCULATED CORNER
3. BASIS OF BEARING DERIVED FROM COLORADO COORDINATE SYSTEM OF 1983 NORTH ZONE.
4. ALL MEASURED DISTANCES ARE GRID.
5. WELL FOOTAGES ARE MEASURED AT RIGHT ANGLES TO THE SECTION LINES.



**WELL PAD - NORDEN 27N-14HZ**

MULTI-WELL PLAN  
NORDEN 28N-14HZ, NORDEN 2C-14HZ,  
NORDEN 2N-14HZ, NORDEN 27N-14HZ,  
NORDEN 27C-14HZ, NORDEN 1N-14HZ,  
NORDEN 1C-14HZ & NORDEN 26N-14HZ  
LOCATED IN SECTION 14  
T1N, R67W, 6TH P.M.  
WELD COUNTY, COLORADO

**Kerr-McGee Oil &  
Gas Onshore L.P.**  
1099 18th Street  
Denver, Colorado 80202



**CONSULTING, LLC**

**SHERIDAN OFFICE**  
1095 Saberton Avenue  
Sheridan, Wyoming 82801  
Phone 307-674-0609

**LOVELAND OFFICE**  
1635 Foxtrail Drive, Suite 204  
Loveland, Colorado 80538  
Phone 970-776-4331

DRAFTED BY:	LMO	CHECKED BY:	JID
DATE DRAFTED:	11/18/15	DATE SURVEYED:	8/31/15
REVISED:	12/3/15	FILE NAME:	14-130