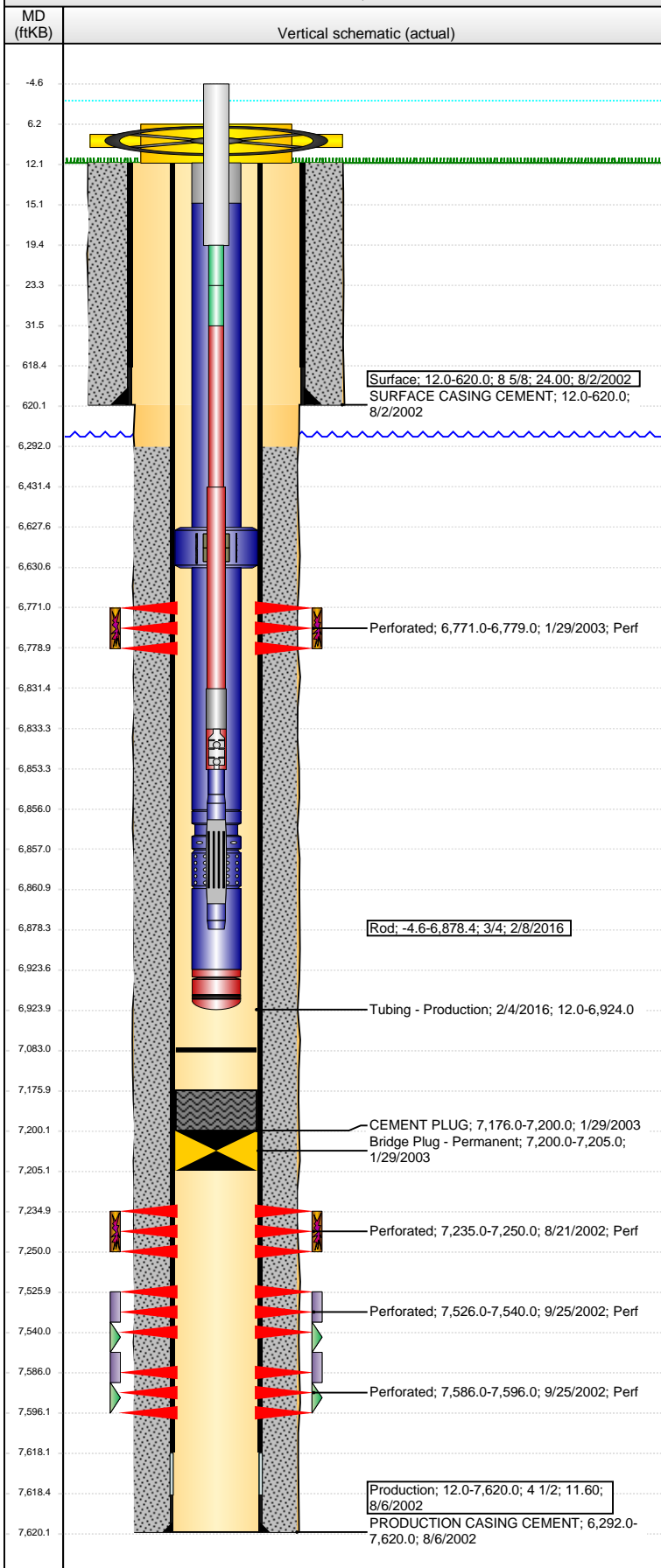


Well Name: CERVI 11-27

VERTICAL - ORIGINAL HOLE, 5/18/2016 9:28:31 AM



Well Header

API 05-123-21002	Business Unit DJ BASIN	District 15	Well Config VERTICAL
Original KB Elevation (ft) 4,872	KB - GL / MSL (ftKB) 12.00	Spud Date 8/1/2002	P & A Date

Comment

Ran pump & rods 1/06; will pull pump & rods. Pulled pump and rods in April of 2009.

Directions To Well

HWY 34 & RD 69, E. 3/10, S. 2 - 2/10, W 9/10, S. INTO.

Congressional Location

Quarter 1	Quarter 2	Quarter 3	Quarter 4	Section	Township	Twnshp N...	Range	Rng E/W Dir
		NW	NW	27	4	N	63	W

Bottom Hole Location

North-South Distance (ft)	From N or S Line	East-West Distance (ft)	From E or W Line

Plug Back Total Depths

Date	Depth (ftKB)	Method	Com
8/6/2002	7,577.0	CASING TALLY	FLOAT COLLAR ON CASING TALLY
8/21/2002	7,521.0	TAG	DEPTH LOGGER ON CBL
9/24/2002	7,620.0	TAG	CLEANOUT
4/30/2009	7,083.0	TAG	

Wellbore Sections

Section Des	Size (in)	Act Top, MD (ftKB)	Act Btm, MD (ftKB)
SURFACE	12 1/4	12.0	620.0
PRODUCTION	7 7/8	620.0	7,620.0

Zone Statuses

Zone Name	Status Date	Status	Fluid Type	Job	Prod Method
DAKOTA	1/29/2003	AB		DRILLING/CO...	
J SAND	1/29/2003	AB		DRILLING/CO...	
CODELL	2/10/2003	PR	Gas	DRILLING/CO...	
CODELL	8/1/2006	SI	Gas		
CODELL	6/1/2009	PR		RECONFIGUR...	

Casing Strings

Surface, 620.0ftKB

Casing Description	Run Date	OD (in)	Wt/Len (l...)	Grade	Top, MD (ft...)	MD (ftKB)
Surface	8/2/2002	8 5/8	24.00		12.0	620.0

Production, 7,620.0ftKB

Casing Description	Run Date	OD (in)	Wt/Len (l...)	Grade	Top, MD (ft...)	MD (ftKB)
Production	8/6/2002	4 1/2	11.60		12.0	7,620.0

Cement

Description	Top Depth (ftKB)	Bottom Depth (ftKB)
SURFACE CASING CEMENT	12.0	620.0
PRODUCTION CASING CEMENT	6,292.0	7,620.0
CEMENT PLUG	7,176.0	7,200.0

Tubing Strings

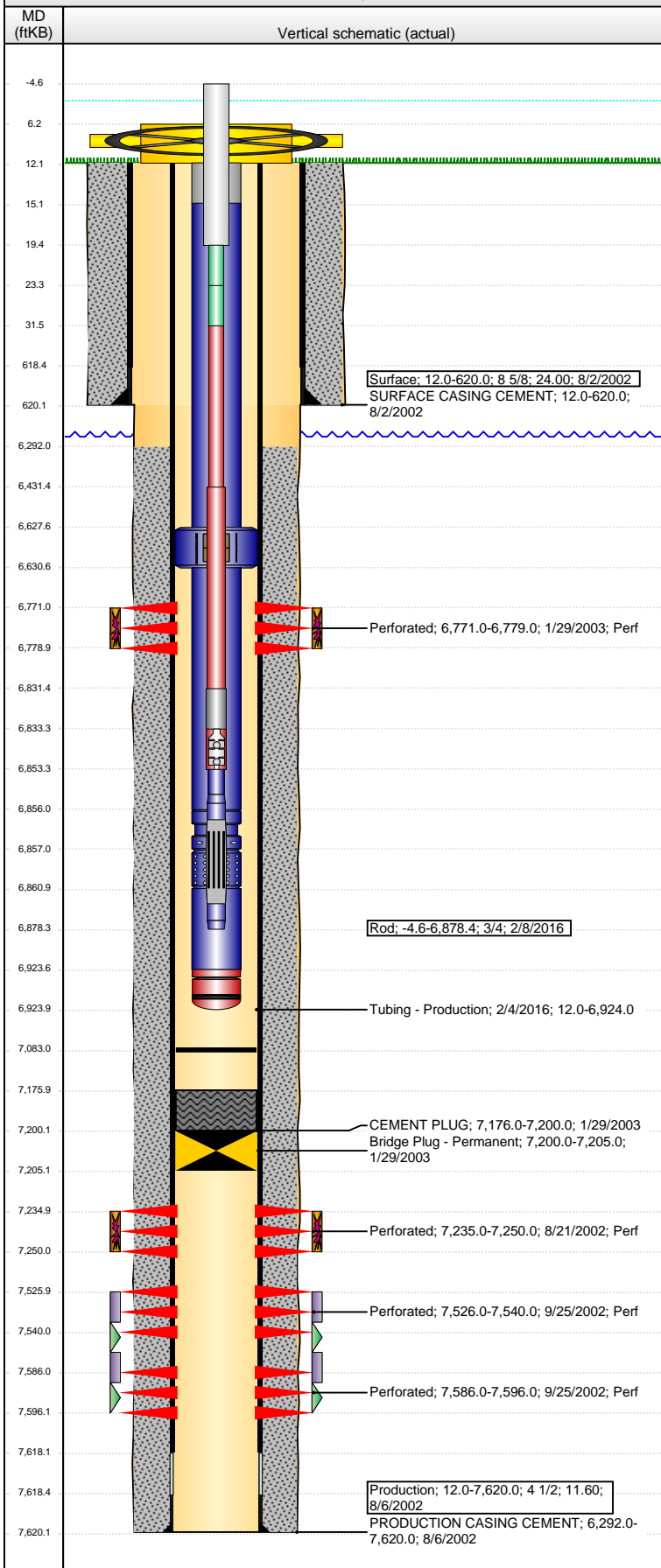
Tubing Description	Run Date	String...	ID (in)	Wt (lb/ft)	Grade	Len (ft)	Set De...
Tubing	1/19/2006						
Tubing Description	Run Date	String...	ID (in)	Wt (lb/ft)	Grade	Len (ft)	Set De...
Tubing - Production	4/30/2009	2 3/8	1.995	4.70	J-55	6,743.34	
Tubing Description	Run Date	String...	ID (in)	Wt (lb/ft)	Grade	Len (ft)	Set De...
Tubing - Production	2/4/2016	2 3/8	1.995	4.70	J-55	6,911.97	

Tubing Components

Item Des	OD (in)	Wt (lb/ft)	Grade	Jts	Len (ft)	Btm (ftKB)	Btm (TVD) (ftKB)
Stretch Correction	2 3/8			1	3.00	15.0	
EUE 8rd Tubing	2 3/8	4.70	J-55	203	6,612.61	6,627.6	
Anchor/catcher	3.99	4.70	N-80	1	3.05	6,630.7	
EUE 8rd Tubing	2 3/8	4.70	J-55	7	225.29	6,856.0	
Pump Seating Nipple	2 3/8	1.10		1	1.10	6,857.1	
PERF SUB	2 3/8	4.70	J-55	1	4.00	6,861.1	
EUE 8rd Tubing	2 3/8	4.70	J-55	2	62.47	6,923.5	
MUD ANCHOR							
Bull Plug	2 3/8			1	0.45	6,924.0	

Well Name: CERV 11-27

VERTICAL - ORIGINAL HOLE, 5/18/2016 9:28:34 AM



Rods & Pumps

Rod Description	Run Date	Set Depth (ftKB)
Rod	2/8/2016	6,878.4
Comment		
Item Description	OD Nominal (in)	Joints
Polished Rod	1 1/4	1
Item Description	OD Nominal (in)	Joints
Pony Rod	3/4	1
Item Description	OD Nominal (in)	Joints
Pony Rod	3/4	1
Item Description	OD Nominal (in)	Joints
Sucker Rod	3/4	256
Item Description	OD Nominal (in)	Joints
Sucker Rod	7/8	16
Item Description	OD Nominal (in)	Joints
Stabilizer Bar	1	1
Item Description	OD Nominal (in)	Joints
Rod Pump	1	1
API Pump Type	Barrel Length (ft)	Seating Assembly Type
R	16.00	C
Item Description	OD Nominal (in)	Joints
Gas Anchor	1	1

Perforation Data

Zone	Bnch/St g	Entered Shot Total	Top (ftKB)	Btm (ftKB)	Date
CODELL, ORIGINAL HOLE		32	6,771.00	6,779.00	1/29/2003
J SAND, ORIGINAL HOLE		60	7,235.00	7,250.00	8/21/2002
DAKOTA, ORIGINAL HOLE		56	7,526.00	7,540.00	9/25/2002
DAKOTA, ORIGINAL HOLE		40	7,586.00	7,596.00	9/25/2002

Stimulations & Treatments

Date	Zone	Primary Job Type
8/22/2002	J SAND, ORIGINAL HOLE	DRILLING/COMPLETION - ORIGINAL
Technical Result	Tech Result Details	Tech Result Note
Comment		
Pump in pressure decline throughout job		
Date	Zone	Primary Job Type
9/26/2002	DAKOTA, ORIGINAL HOLE	DRILLING/COMPLETION - ORIGINAL
Technical Result	Tech Result Details	Tech Result Note
Comment		
ACID JOB		
Date	Zone	Primary Job Type
10/7/2002	DAKOTA, ORIGINAL HOLE	DRILLING/COMPLETION - ORIGINAL
Technical Result	Tech Result Details	Tech Result Note
Comment		
ACID JOB		
Date	Zone	Primary Job Type
1/30/2003	CODELL, ORIGINAL HOLE	DRILLING/COMPLETION - ORIGINAL
Technical Result	Tech Result Details	Tech Result Note
Comment		

Other In Hole

Run Date	Des	OD (in)	Top (ftKB)	Btm (ftKB)
1/29/2003	Bridge Plug - Permanent	3.99	7,200.0	7,205.0

Logs

Date	Type	Top, MD (ftKB)	Btm, MD (ftKB)
8/6/2002	TRIPLE COMBO	617.0	7,620.0
8/21/2002	CBL/CCL/GR	6,090.0	7,516.0