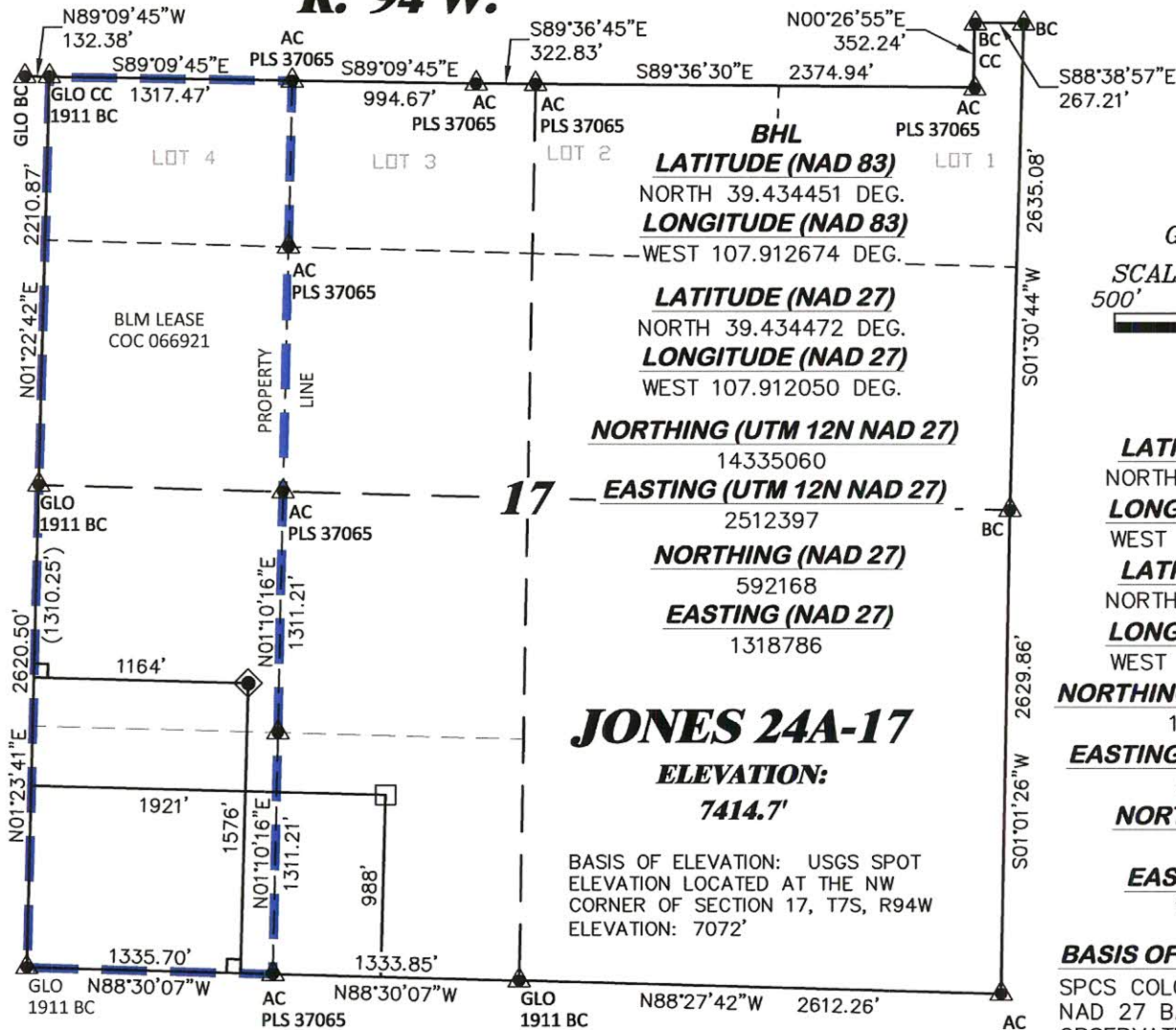


R. 94 W.



JONES 24A-17

ELEVATION:

7414.7'

BASIS OF ELEVATION: USGS SPOT
ELEVATION LOCATED AT THE NW
CORNER OF SECTION 17, T7S, R94W
ELEVATION: 7072'

NOTES

1. GPS OPERATOR D. HENDERHAN
OBSERVED A PDOP OF 1.5.
2. ALL GPS OBSERVATIONS ARE IN
COMPLIANCE WITH COGCC RULE No.215.
3. EXISTING IMPROVEMENTS WITHIN 500'
OF LOCATION. SEE EXHIBIT 2D.
4. SURROUNDING SURFACE USE IS
NATIVE BRUSH, NON CROP RANGELAND.

LEGEND

- ◆ WELL LOCATION
- APPROX. BHL
- └ DENOTES 90° TIE
- ▲ PREVIOUSLY
FOUND MONUMENT
- LEASE LINE

SURVEYOR'S STATEMENT

I, DAVID E. HENDERHAN, AN EMPLOYEE AND AGENT ON BEHALF OF D.R. GRIFFIN & ASSOCIATES, INC. STATE THE PLAT HEREON IS A CORRECT REPRESENTATION OF A SURVEY MADE UNDER MY SUPERVISION ON THE 11th DAY OF MAY, 2016 OF THE SHOWN JONES 24A-17 AS DRILLED CONDUCTOR.

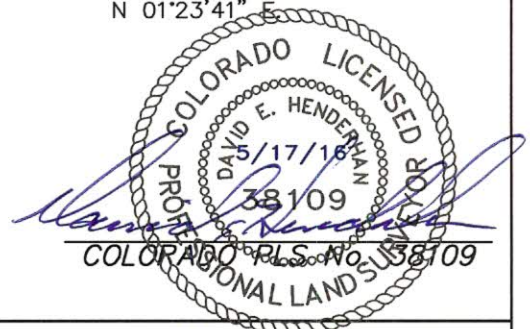
Notice: In accordance with Colorado State Law, any legal action based upon any defect in this survey plat must commence within three (3) years after first discovery of such defect. In no event, may any action based upon any defect in this survey plat be commenced more than ten (10) years from the date of certification shown hereon.

17L-794 PAD

BASIS OF BEARING/DATUM

SPCS COLORADO CENTRAL
NAD 27 BASED ON GPS
OBSERVATIONS AND OPUS
SOLUTION ON DRG CONTROL
POINT "17-7-94 RESET"
HAVING A POSITION OF:
NAD83(2011)
LAT 39° 26' 10.67" NORTH
LONG 107° 54' 58.98" WEST
NAVD88 ELEVATION: 7356.85'

THE WEST LINE OF THE SW¼
OF SECTION 17, MONUMENTED
BY GLO BC'S AND BEARING
N 01°23'41" E



(307) 362-5028

1414 ELK ST., ROCK SPRINGS, WY 82901

DRAWN: 4/16/2015 - TCM

SCALE: 1" = 1000'

REVISED: 5/17/2016 - TCM

DRG JOB No. 20793

REVISED SHL

20793 - EXHIBIT 1U

**PLAT OF CONDUCTOR LOCATION IN
NWSW, SECTION 17, FOR
CAERUS OIL & GAS**

**1576' F/SL, & 1164' F/WL, SECTION 17,
T. 7 S., R. 94 W., 6TH P.M.,
GARFIELD COUNTY, COLORADO**