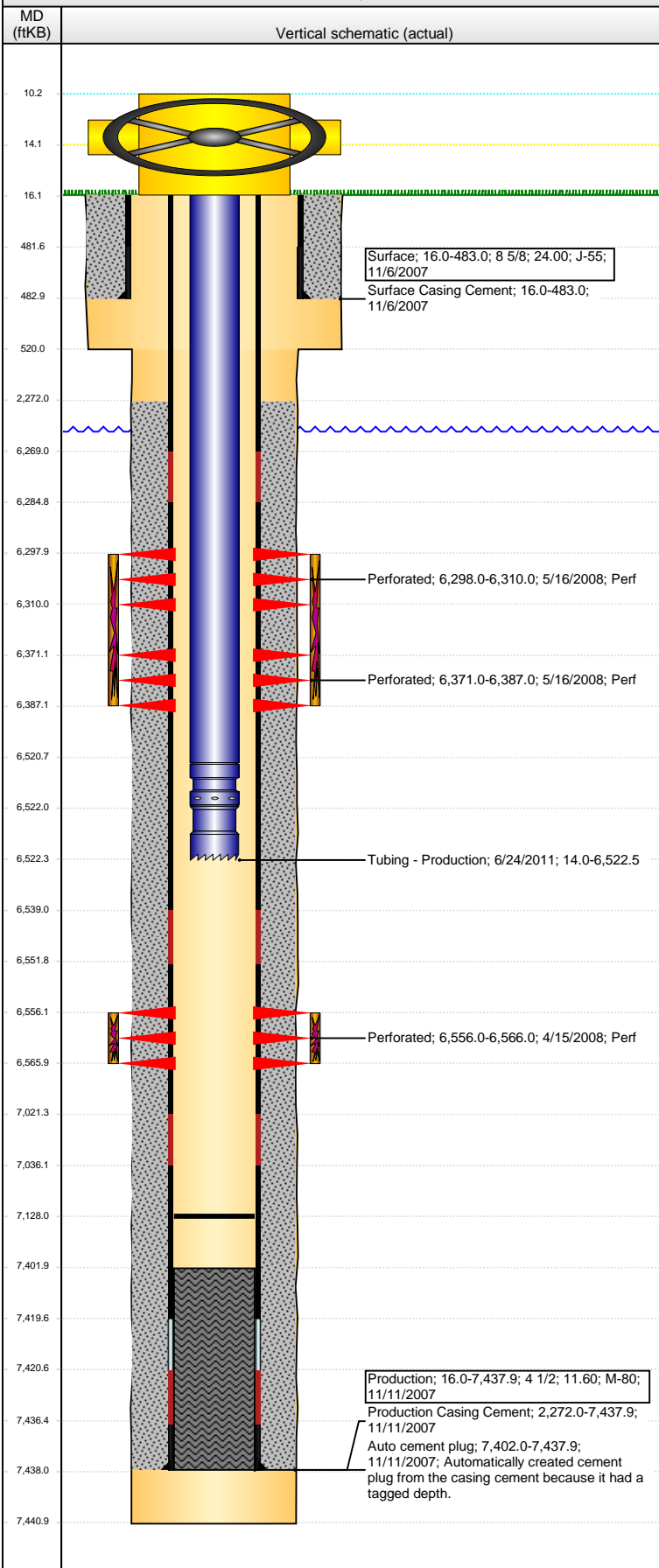


Well Name: CERVI USX CC23-02

VERTICAL - ORIGINAL HOLE, 5/16/2016 3:14:45 PM



Well Header

API 05-123-26052	Business Unit DJ BASIN	District 15	Well Config VERTICAL
Original KB Elevation (ft) 4,673	KB - GL / MSL (ftKB) 16.00	Spud Date 11/5/2007	P & A Date

Comment

Directions To Well

HWY 34 & WCR 69, (GATE 2010) EAST 0.1, SOUTH 2.2 MILES, EAST 1.1, NORTH 0.3, WEST 0.3 MILES INTO

Congressional Location

Quarter 1	Quarter 2	Quarter 3	Quarter 4	Section	Township	Twnshp N...	Range	Rng E/W Dir
		NW	NE	23	4	N	63	W

Bottom Hole Location

North-South Distance (ft)	From N or S Line	East-West Distance (ft)	From E or W Line
---------------------------	------------------	-------------------------	------------------

Plug Back Total Depths

Date	Depth (ftKB)	Method	Com
11/10/2007	7,420.0	CASING TALLY	FLOAT COLLAR
12/18/2007	7,402.0	CASED HOLE LOG	DEPTH-LOGGER/CBL
6/24/2011	7,128.0	TUBING TALLY	DRILL PLUG AND PUSH TO 7128'

Wellbore Sections

Section Des	Size (in)	Act Top, MD (ftKB)	Act Btm, MD (ftKB)
SURFACE	12 1/4	16.0	520.0
PRODUCTION	7 7/8	520.0	7,441.0

Zone Statuses

Zone Name	Status Date	Status	Fluid Type	Job	Prod Method
CODELL	5/16/2008	SI		DRILLING/CO...	
CODELL	1/25/2011	PR		DRILLING/CO...	
NIOBRARA	5/16/2008	SI		DRILLING/CO...	
NIOBRARA	1/25/2011	PR		DRILLING/CO...	

Casing Strings

Surface, 483.0ftKB

Casing Description	Run Date	OD (in)	Wt/Len (l...)	Grade	Top, MD (ft...)	MD (ftKB)
Surface	11/6/2007	8 5/8	24.00	J-55	16.0	483.0

Production, 7,437.9ftKB

Casing Description	Run Date	OD (in)	Wt/Len (l...)	Grade	Top, MD (ft...)	MD (ftKB)
Production	11/11/2007	4 1/2	11.60	M-80	16.0	7,437.9

Cement

Description	Top Depth (ftKB)	Bottom Depth (ftKB)
Surface Casing Cement	16.0	483.0
Description	Top Depth (ftKB)	Bottom Depth (ftKB)
Production Casing Cement	2,272.0	7,437.9

Tubing Strings

Tubing Description	Run Date	String...	ID (in)	Wt (lb/ft)	Grade	Len (ft)	Set De...
Tubing - Production	6/24/2011	2 3/8	1.995	4.70	J-55	6,508.46	

Tubing Components

Item Des	OD (in)	Wt (lb/ft)	Grade	Jts	Len (ft)	Btm (ftKB)	Btm (TVD) (ftKB)
EUE 8rd Tubing	2 3/8	4.70	J-55	210	6,506.81	6,520.8	
Pump Seating	2 3/8	4.70	J-55	1	1.10	6,521.9	
Nipple							
Notched collar	2 3/8	4.70	J-55	1	0.55	6,522.5	

Perforation Data

Zone	Bnch/St g	Entered Shot Total	Top (ftKB)	Btm (ftKB)	Date
NIOBRARA, ORIGINAL HOLE	A	64	6,298.00	6,310.00	5/16/2008
NIOBRARA, ORIGINAL HOLE	B	64	6,371.00	6,387.00	5/16/2008
CODELL, ORIGINAL HOLE		40	6,556.00	6,566.00	4/15/2008

Stimulations & Treatments

Date	Zone	Primary Job Type
5/16/2008	CODELL, ORIGINAL HOLE	DRILLING/COMPLETION - ORIGINAL
Technical Result	Tech Result Details	Tech Result Note
Success	According to Plan	

Comment

PRE-ISIP = 3091 PSI, 5-MIN ISIP = 2842 PSI. PRESSURE RESPONSE TURNED POSITIVE IN THE 3.0 PPG SAND (NOLTE = 0.086). POST-ISIP= 3334 PSI, 5-MIN = 3263 PSI.

Well Name: CERVI USX CC23-02

VERTICAL - ORIGINAL HOLE, 5/16/2016 3:14:47 PM

Stimulations & Treatments

Date 5/16/2008	Zone NIOBRARA, ORIGINAL HOLE	Primary Job Type DRILLING/COMPLETION - ORIGINAL
Technical Result Success	Tech Result Details According to Plan	Tech Result Note

Comment
PRE-ISIP = 3231 PSI, 5-MIN ISIP = 3096 PSI. PRESSURE RESPONSE TURNED POSITIVE IN THE 2.0 PPG SAND (NOLTE = 0.05). POST-ISIP= 3299 PSI, 5-MIN = 3211 PSI.

Other In Hole

Run Date	Des	OD (in)	Top (ftKB)	Btm (ftKB)

Logs

Date	Type	Top, MD (ftKB)	Btm, MD (ftKB)
11/10/2007	COMPENSATED DENSITY	2,600.0	7,421.0
11/10/2007	INDUCTION	483.0	7,441.0
12/18/2007	CBL/CCL/GR	2,130.0	7,400.0

