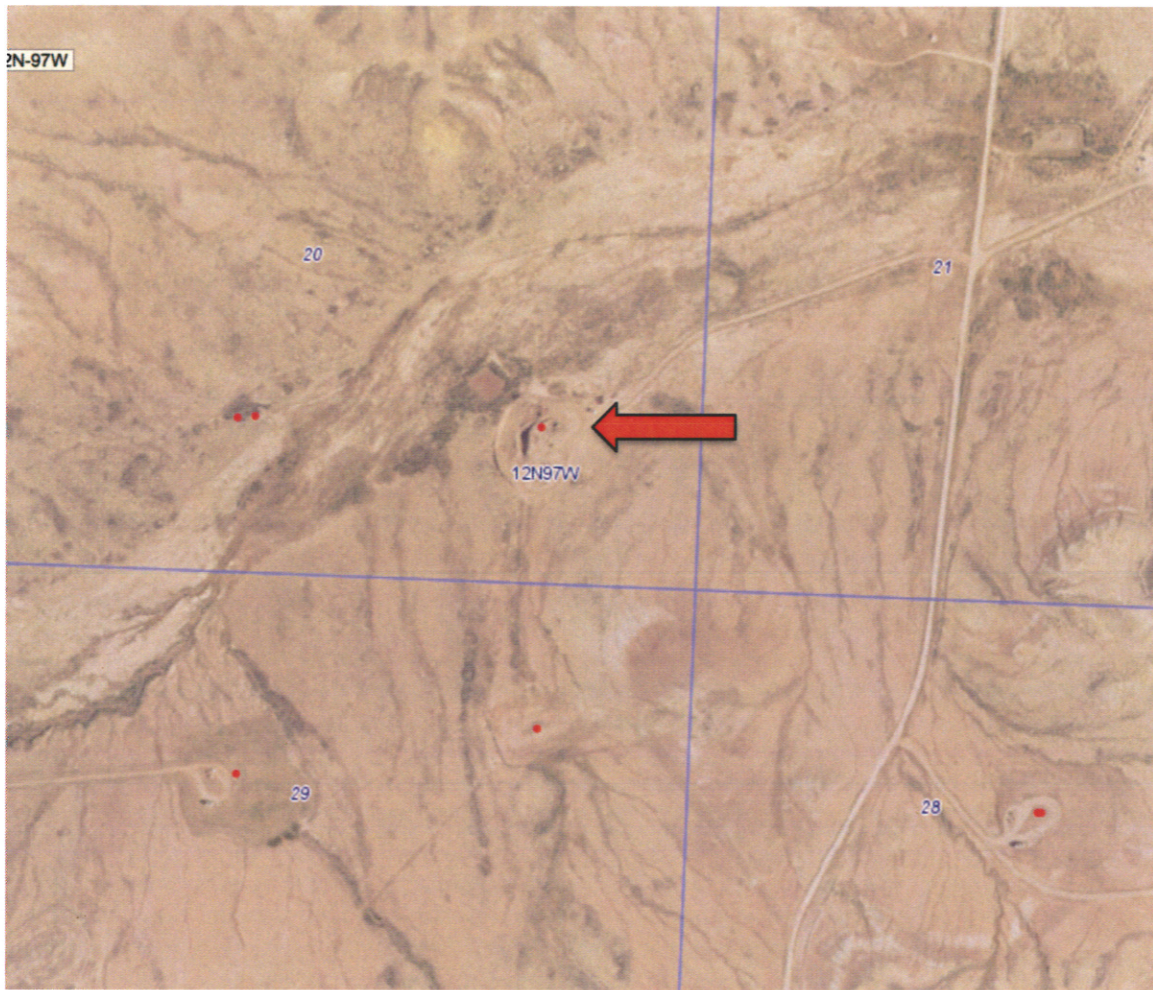


Figures

Figure 1: Location of Grynberg Chivington 1; SESE Section 20, T12N-R97W



Source: COGCC GIS Online Data, 2016

Figure 2: Aerial of Grynberg Chivington 1 Location Facility ID Number 100600



Source: GoogleEarth Images 2016

Figure 3: Diagram of Chivington 1 Layout and Excavation Locations (approximate dimensions, not to scale)

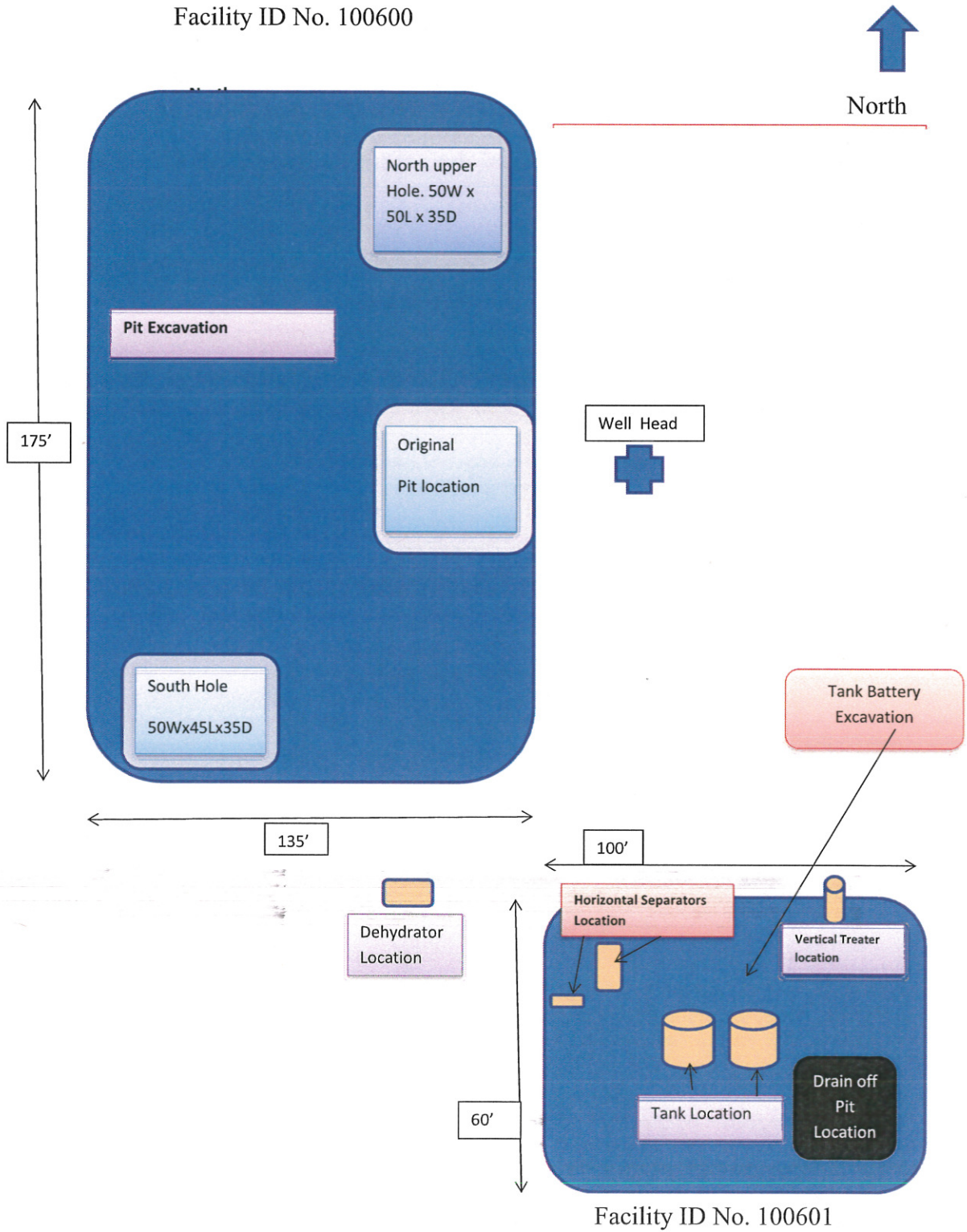


Figure 4: Diagram of Northern Pit Excavation (Facility ID 100600; approximate dimensions, not to scale)

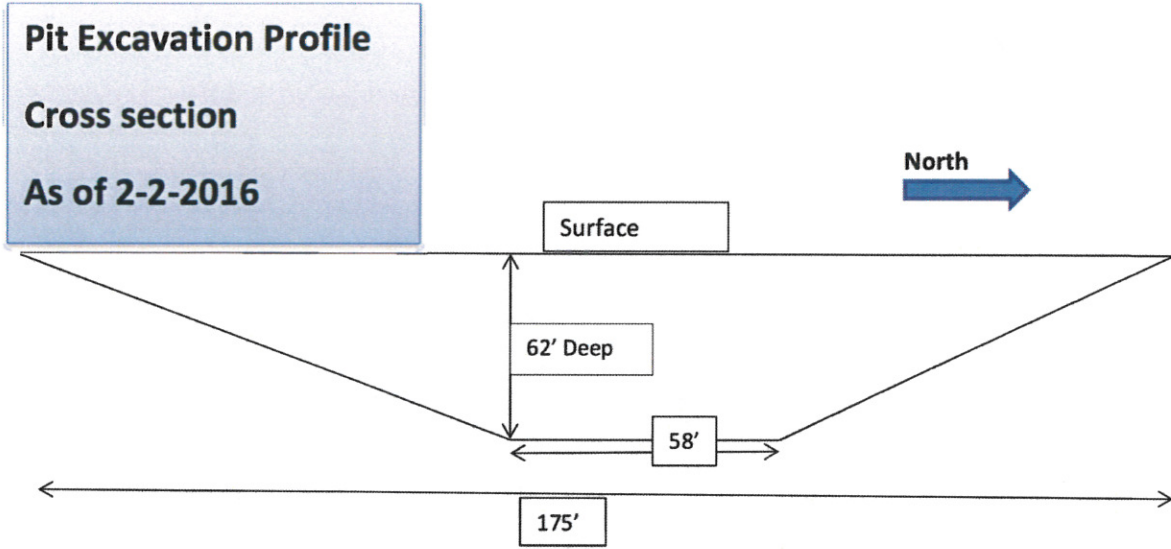


Figure 5: Aerial View Diagram of Proposed Pit Soil Sample Locations (Facility ID No. 100600; approximate dimensions, not to scale). Location with label of “BTEX-TPH” will have a laboratory analysis of BTEX and TPH only. Location with label of “910-1” will be analyzed according COGCC Table 910-1 criteria. Location approximately 175 feet north to south and 135 feet east to west.

