

COLUMBINE LOGGING

Scale: 5" / 100'
Measured Depth Log

Well Name Albrighton L-10HN

Location S10 T6N R64W

State Colorado

Country United States

API Number 05-123-42504

Geographic Region DJ Basin

Spud Date 2/1/2016

Surface Coordinates 40.496613/- 104.541259
1170 FSL, 1242 FWL

Bottom Hole Coordinates 470 FFNLL, 2531 FFWLL

County Weld

Rig Number Frontier (Utah) 8

AFE # 42504

Field Wattenberg

Drilling Completed 2/7/2016

Ground Elevation 4807'

K.B. Elevation 4830'

Logged Interval 6000' **To** 11673'

Total Depth 11673'

Formation Niobrara

Type of Drilling Fluid WBM

Operator

Company Bayswater Exploration & Production, LLC.

Address 730 17th St.
Denver, CO 80202



Geologist

Name Mark E. Brown

Company Bayswater Exploration & Production, LLC.

Address 730 17th St.
Denver, CO 80202

Other

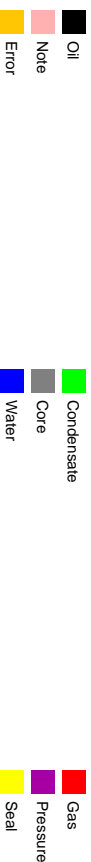
Robert Davis Senior Lead Wellsite Geologic

Andrew Martens Wellsite Geologist

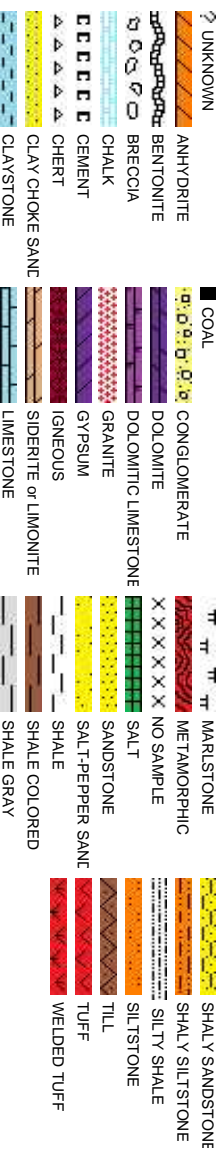
Columbine Logging Computer 148

Bloodhound Unit 331

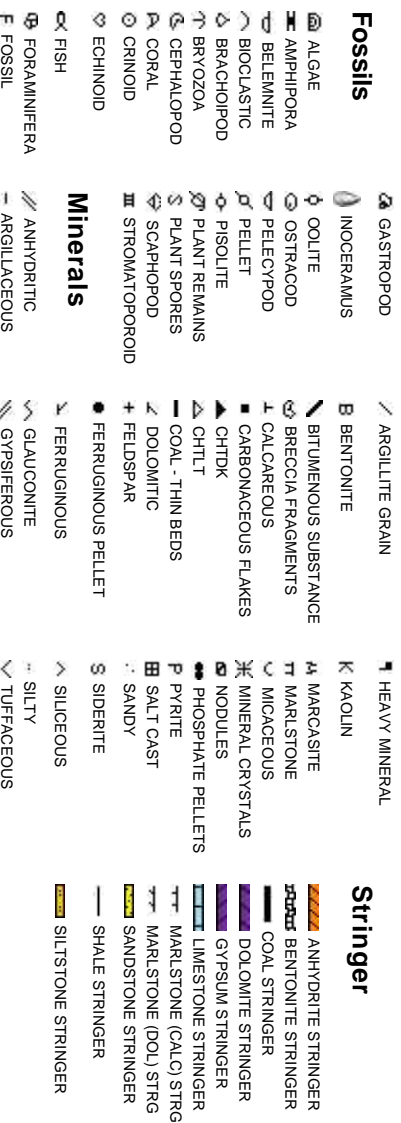
Zone Color Coding



Rock Types



Accessories



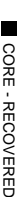
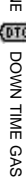
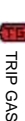
Oil Show



Engineering



Porosity



glist

Other Symbols

 DST INTERVAL  WIRELINE TESTED - LEFT **E** EARTHY

 FAULT  WIRELINE TESTED - RT **FX** FINELYXLN

 FORMATION TOP  DRILL STEM TEST **GS** GRAINSTONE

 GAS SHOW  MINDEPTH MN DEPTH **L** LITHOGRAPHIC

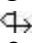
 OIL SHOW **MX** MICROXLN


Rounding

 MINDEPTH UP **MIS** MUDSTONE

 MINDEPTH (DOWN) **PS** PACKSTONE

 NORMAL FAULT **R** ROUNDED **WIS** WACKSTONE

(LEFT)  OVERTURNED STRATA **B** SUBANG


 REVERSE FAULT **F** SUBRND

Sorting


 CASING **M** MODERATE

Textures

 SIDEWALL CORE (LEFT) **P** POOR

 SIDEWALL CORE (RIGHT) **BS** BOUNDSTONE **W** WELL

 SLIDE **C** CHALKY

 SURVEY **CX** CRYPTOXLN

Slide/Rotate

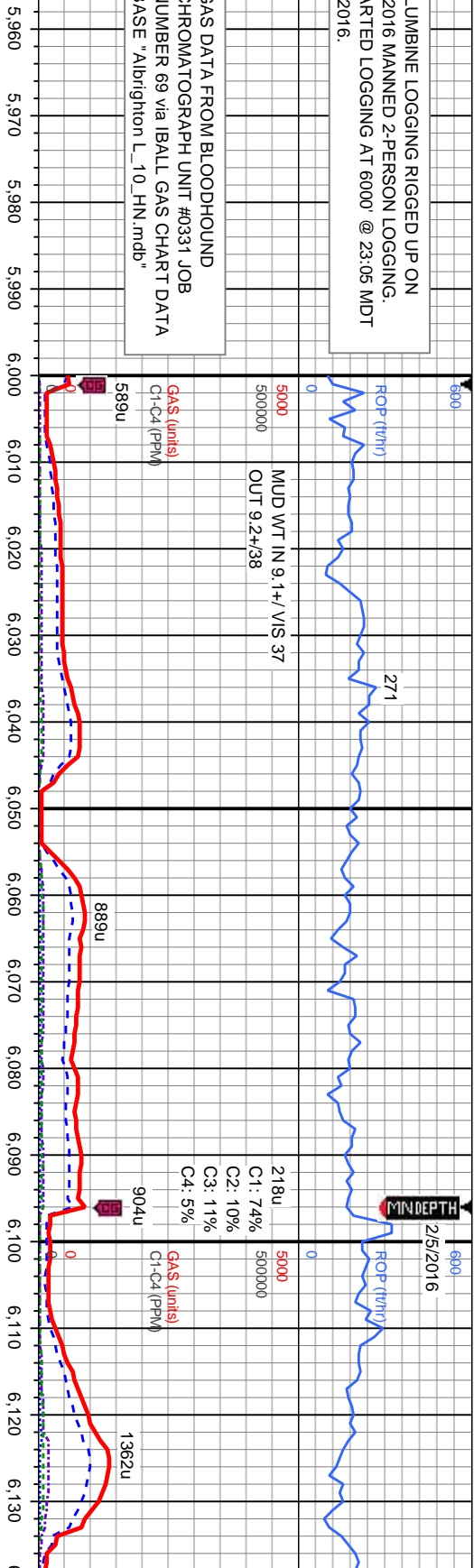
ROP
ROP

COLUMBINE LOGGING RIGGED UP ON
2/4/2016 MANNED 2-PERSON LOGGING.
STARTED LOGGING AT 6000' @ 23:05 MDT
2/4/2016.

Total Gas & Chromatograph

GAS DATA FROM BLOODHOUND
CHROMATOGRAPH UNIT #0331 JOB
NUMBER 69 via IBALL GAS CHART DATA
BASE "Albrighton L_10_HN.mdb"

Depth Labels



% Lith

Gamma
GAMMA



SURVEY, GAMMA, and ROP DATA
PROVIDED BY BAKER HUGHES

Well Bore
TVD

Bit Data
Bit #: 1
Type: AT506S
Size: 8.75
Depth In.: 1.555'
Jets: 3 x16
S/N: 7046096

TVD (ft)

MD: 6.072'
Inclination: 3.71°
Azimuth: 147.14°
TVD: 5,784.15'
VS: -632.27'

TVD (ft)

Oil Show

E
G
M
F
T
S

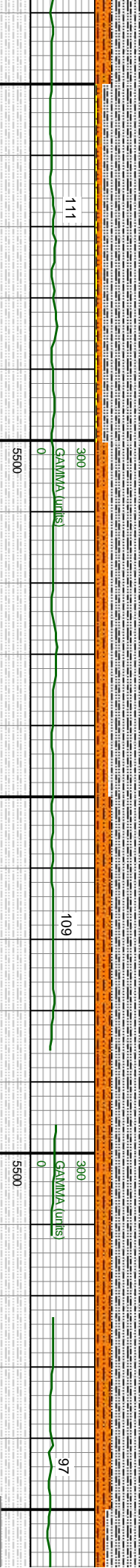
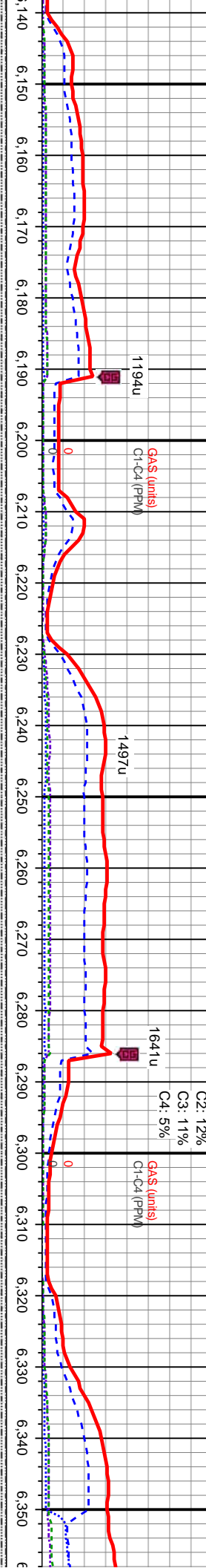
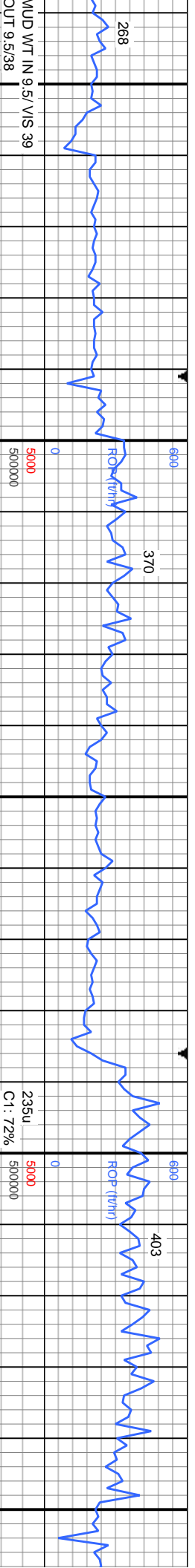
Table with columns for depth and oil show indicators (E, G, M, F, T, S).

SLTY SH: med-dk gy, sit gr, mod frm, sb pily-pily, rthy-sb rthy lex, SHY SLTST: lt-med gy, sil-vf gr, sil-fm-hd, sb pily-sb blkly, gt tex, arg cmt, sh incl, non calc, tr shy ss, slow difse, no stmg, v dul bl cut, sil even omng ring resd

SLTY SH: med-dk gy, occ lt gy, sit gr, r sil-vf gr, sil-fm-hd, sb pily-sb blkly, gt tex, v dul bl cut, even omng ring resd

Images





MD: 6.167'
Inclination: 3.03°
Azimuth: 151.6°
TVD: 5.878.98'
VS: -635.8'

MD: 6.262'
Inclination: 0.1°
Azimuth: 331.66°
TVD: 5.973.94'
VS: -637.41'

MD: 6.357'
Inclination: 6.06°
Azimuth: 151.6°
TVD: 6.06'
VS: -637.2'

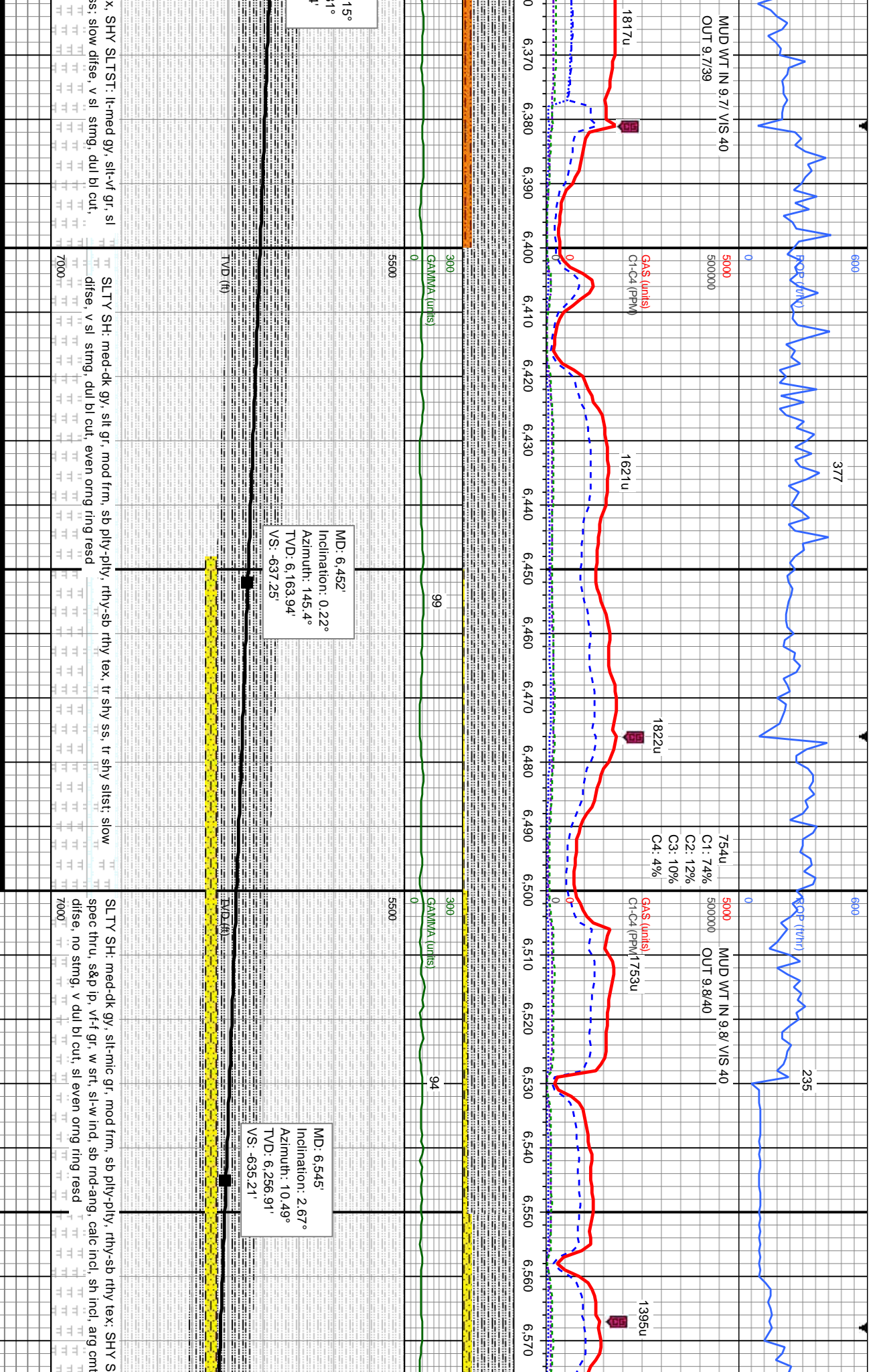
mod frm, sb pily-pily, rthy-sb rthy tex. SHY SLTST: ll-med gy, arg cmt, sh incl, non calc, tr sny ss, slow disse, no sting.

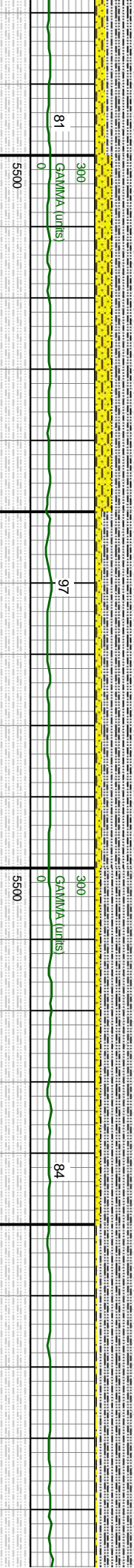
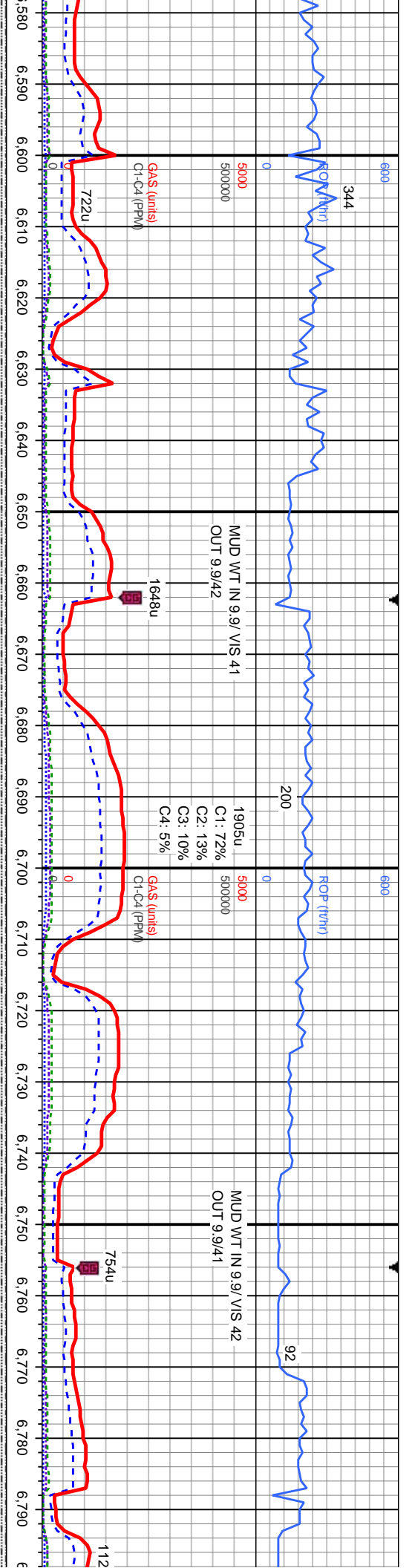
SLTY SH: med-dk gy, occ lt gy, slit gr, mod frm, sb pily-pily, rthy-sb rthy tex. SHY SLTST: ll-med gy, slit-vf gr, sl frm-hd, sb pily-sb blkly, gt tex, arg cmt, sh incl, non calc, v slow disse, no sting, v dul bl cut, sl even orng ring resd

7000

TVD (ft)





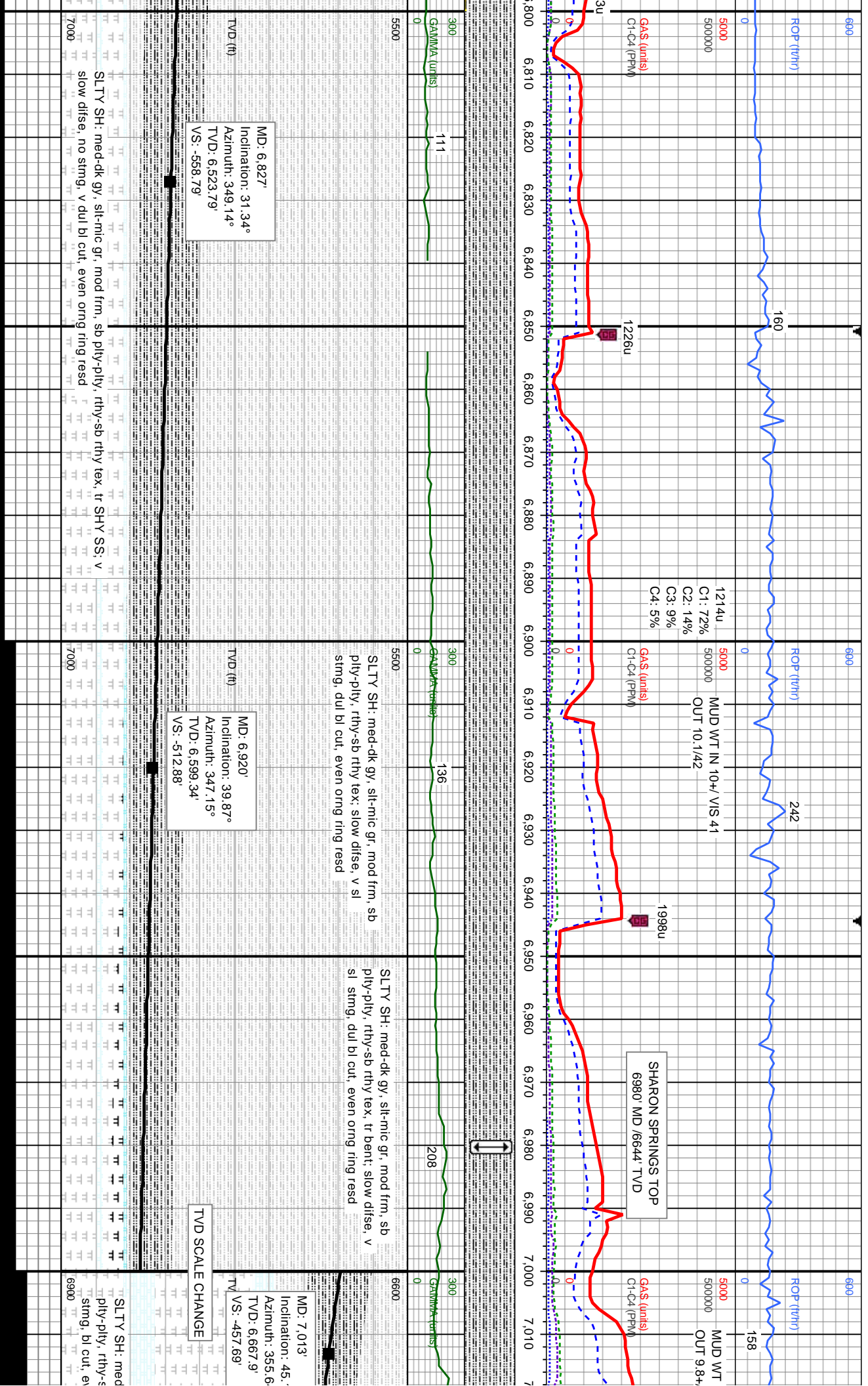


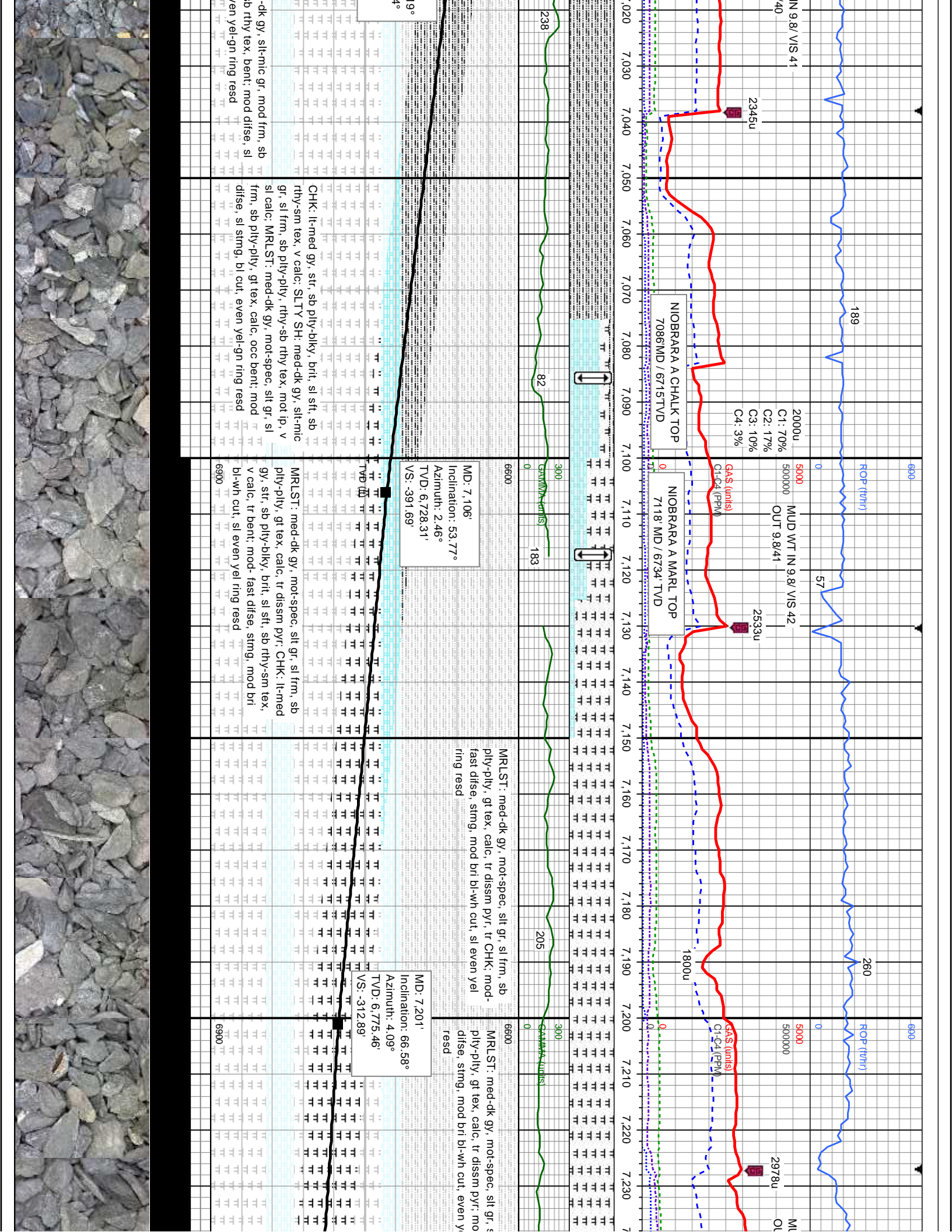
MD: 6.640'
 Inclination: 13.94°
 Azimuth: 2.14°
 TVD: 6.350.76'
 VS: -622.1'

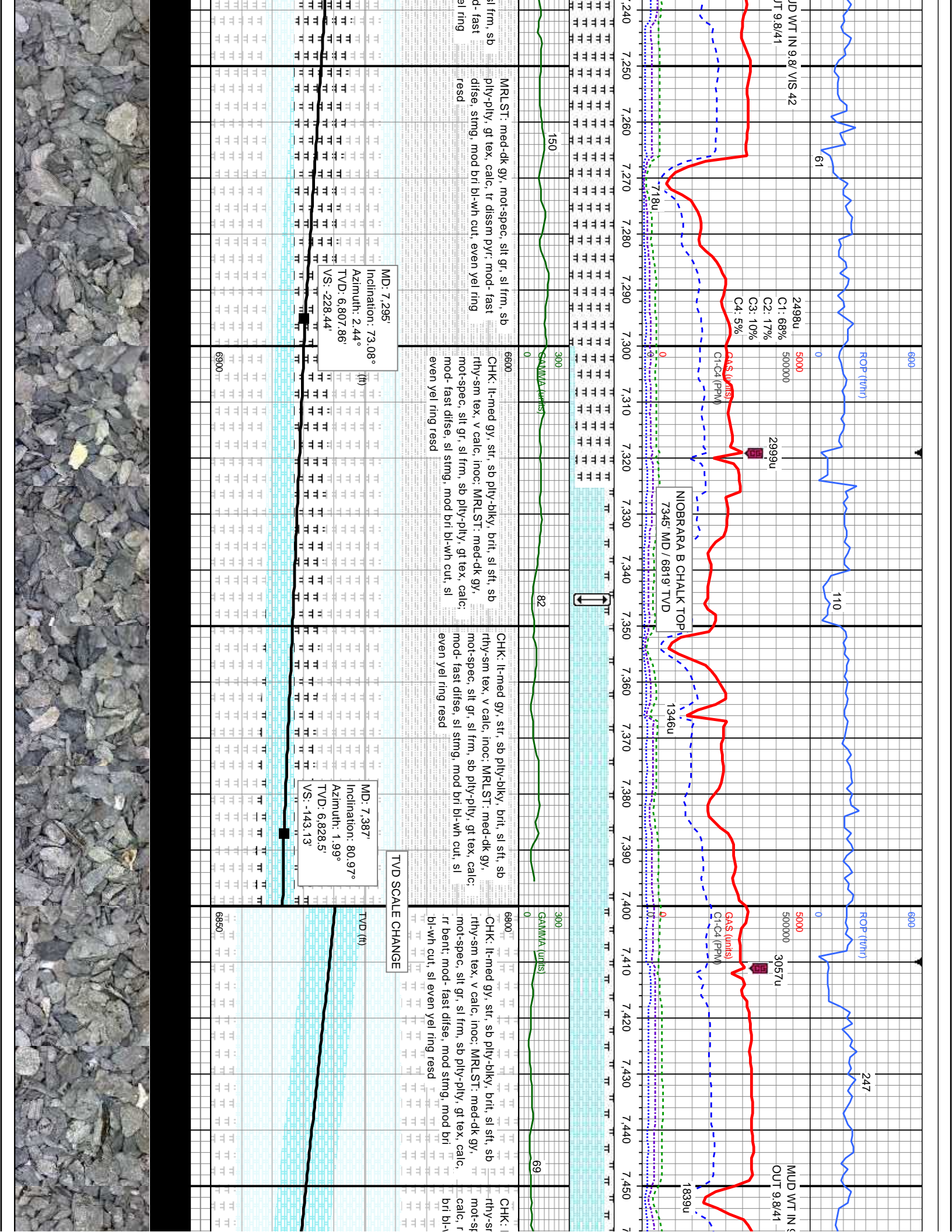
MD: 6.733'
 Inclination: 20.88°
 Azimuth: 0.89°
 TVD: 6.439.45'
 VS: -595.74'

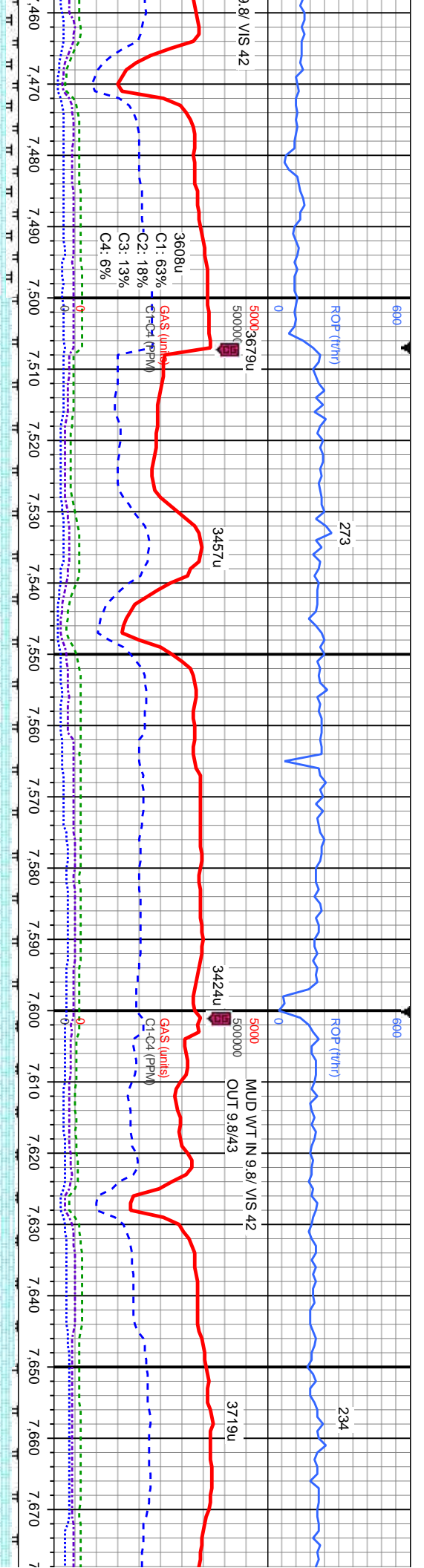
SLTY SH: med-dk gy, silt-mic gr, mod frm, sb pily-pily, rthy-sb rthy tex: SHY SS: wht-lt gy, sl
 trnsf-op, spec thru, s&p ip, vrf-gr, w srl, sl-w ind, sb mnd-ang, calc incl, sh incl, arg cmt, tr shy
 siltst: v slow
 SLTY SH: med-dk gy, silt-mic gr, mod frm, sb pily-pily, rthy-sb rthy tex: SHY SS: wht-lt gy, sl
 trnsf-op, spec thru, s&p ip, vrf-gr, w srl, sl-w ind, sb mnd-ang, calc incl, sh incl, arg cmt, tr shy
 siltst: v slow
 SLTY SH: med-dk gy, silt-mic gr, mod frm, sb pily-pily, rthy-sb rthy tex: SHY SS: wht-lt gy, sl
 trnsf-op, spec thru, s&p ip, vrf-gr, w srl, sl-w ind, sb mnd-ang, calc incl, sh incl, arg cmt, tr shy
 siltst: v slow











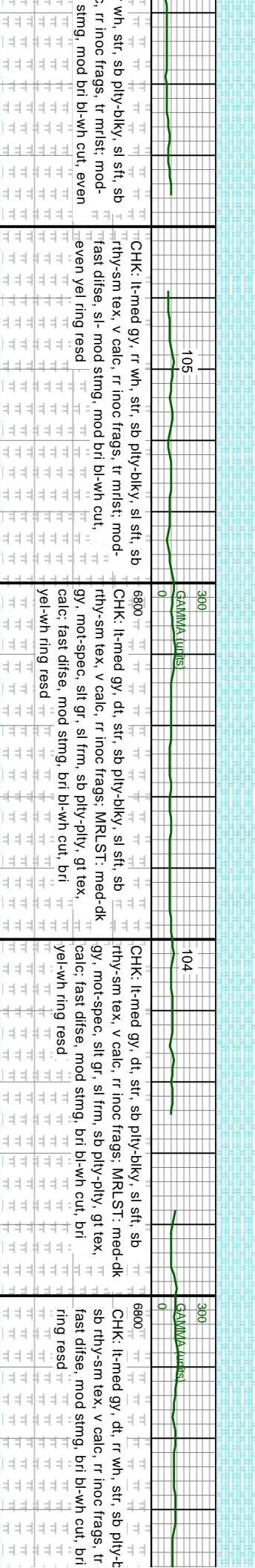
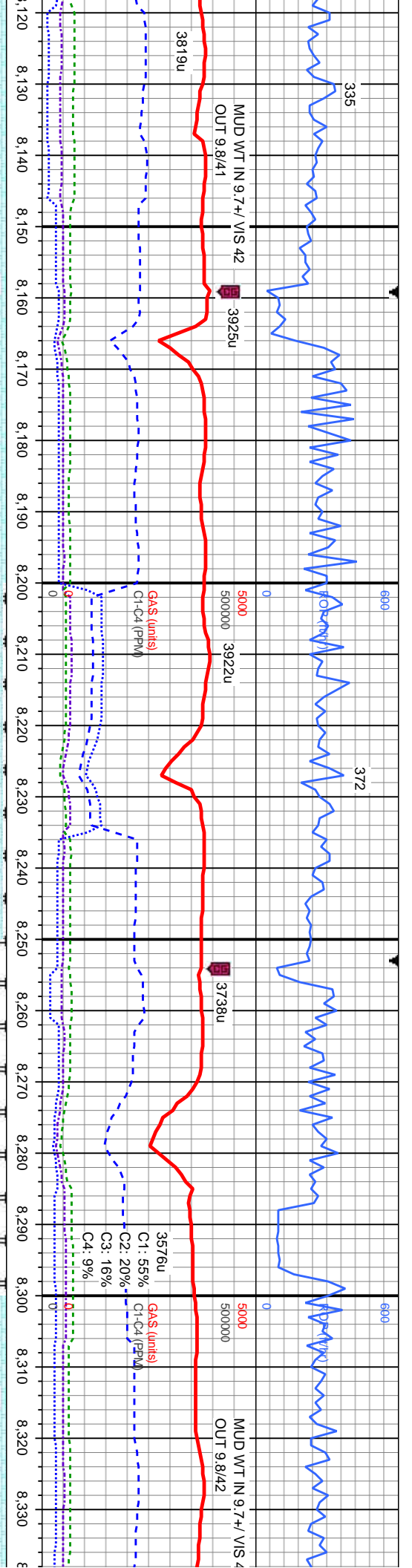
MD: 7.481'
Inclination: 88.09°
Azimuth: 2.13°
TVD: 6.837.46'
VS: -54.15'

MD: 7.576'
Inclination: 91.29°
Azimuth: 0.34°
TVD: 6.837.97'
VS: 35.8'

MD: 7.668'
Inclination: 91.08°
Azimuth: 369.57°
TVD: 6.836.07'
VS: 122.23'

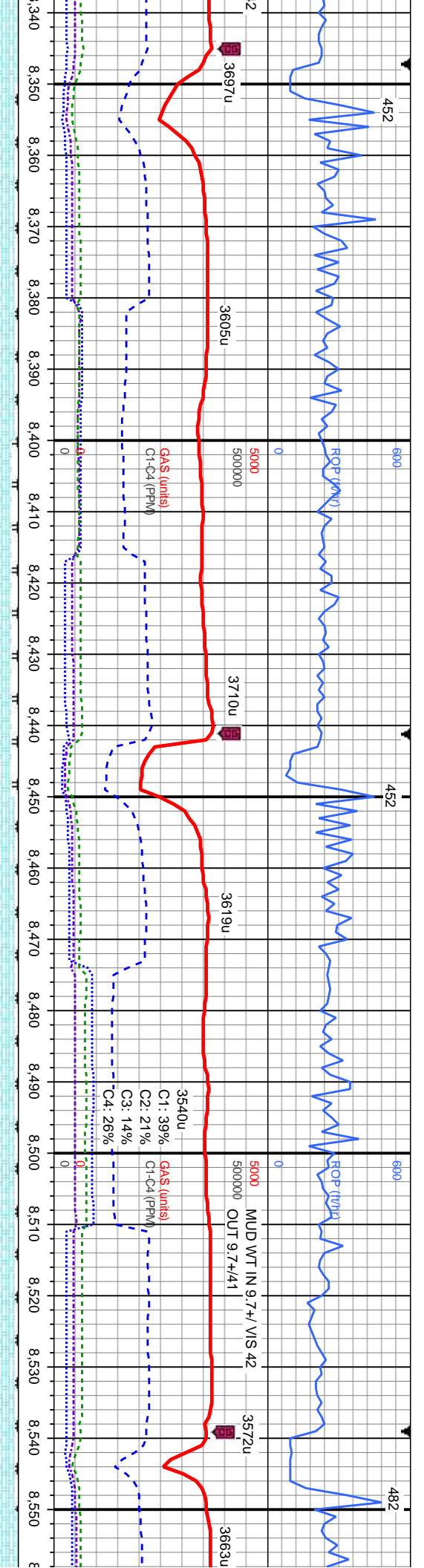
Depth (ft)	Gamma (units)	Log Description
6800	300	CHK: lt-med gy, str, sb ply-blky, brit, sl sft, sb rhy-sm tex, v calc, inoc: MRLST: med-dk gy, mot-spec, silt gr, sl frm, sb ply-pty, gt tex, calc, rr bent: mod-fast difse, sting, mod bri bl-wh cut, even yel ring resd
6850	106	CHK: lt-med gy, str, sb ply-blky, brit, sl sft, sb rhy-sm tex, v calc, inoc: MRLST: med-dk gy, mot-spec, silt gr, sl frm, sb ply-pty, gt tex, calc, rr bent: mod-fast difse, sting, mod bri bl-wh cut, even yel ring resd
6800	300	CHK: lt-med gy, str, sb ply-blky, brit, sl sft, sb rhy-sm tex, v calc, inoc: MRLST: med-dk gy, mot-spec, silt gr, sl frm, sb ply-pty, gt tex, calc, rr bent: mod-fast difse, sting, mod bri bl-wh cut, even yel ring resd
6850	85	CHK: lt-med gy, str, sb ply-blky, sl sft, sb rhy-sm tex, v calc, com inoc frags: MRLST: med-dk gy, mot-spec, silt gr, sl frm, sb ply-pty, gt tex, calc, rr bent: mod-fast difse, sl-mod sting, mod bri bl-wh cut, sl even yel ring resd
6800	300	CHK: lt-med gy, str, sb ply-blky, brit, sl sft, sb rhy-sm tex, v calc, inoc frags: MRLST: med-dk gy, mot-spec, silt gr, sl frm, sb ply-pty, gt tex, calc, rr bent: mod-fast difse, sl-mod sting, mod bri bl-wh cut, sl even yel ring resd
6850	85	CHK: lt-med gy, str, sb ply-blky, sl sft, sb rhy-sm tex, v calc, com inoc frags: MRLST: med-dk gy, mot-spec, silt gr, sl frm, sb ply-pty, gt tex, calc, rr bent: mod-fast difse, sl-mod sting, mod bri bl-wh cut, sl even yel ring resd





MD: 8.136' Inclination: 90.25° Azimuth: 358.84° TVD: 6.835.04' VS: 561.41'	CHK: lt-med gy, rr wh, str, sb ply-blky, sl sft, sb rthy-sm tex, v calc, rr inoc frags, tr mlst: mod-fast dtise, sl- mod stmg, mod bri bl-wh cut, even yel ring resd	CHK: lt-med gy, dt, str, sb ply-blky, sl sft, sb rthy-sm tex, v calc, rr inoc frags: MRLST: med-dk gy, mot-spec, slt gr, sl frm, sb ply-pty, gt tex, calc: fast dtise, mod stmg, bri bl-wh cut, bri yel-wh ring resd	CHK: lt-med gy, dt, rr wh, str, sb ply-blky, sl sft, sb rthy-sm tex, v calc, rr inoc frags, tr mlst: mod-fast dtise, mod stmg, bri bl-wh cut, bri ring resd
MD: 8.230' Inclination: 90° Azimuth: 358.74° TVD: 6.834.84' VS: 649.06'	CHK: lt-med gy, dt, str, sb ply-blky, sl sft, sb rthy-sm tex, v calc, rr inoc frags: MRLST: med-dk gy, mot-spec, slt gr, sl frm, sb ply-pty, gt tex, calc: fast dtise, mod stmg, bri bl-wh cut, bri yel-wh ring resd	CHK: lt-med gy, dt, str, sb ply-blky, sl sft, sb rthy-sm tex, v calc, rr inoc frags: MRLST: med-dk gy, mot-spec, slt gr, sl frm, sb ply-pty, gt tex, calc: fast dtise, mod stmg, bri bl-wh cut, bri ring resd	CHK: lt-med gy, dt, rr wh, str, sb ply-blky, sl sft, sb rthy-sm tex, v calc, rr inoc frags, tr mlst: mod-fast dtise, mod stmg, bri bl-wh cut, bri ring resd
MD: 8.324' Inclination: 89.54° Azimuth: 359.08° TVD: 6.835.21' VS: 736.78'	CHK: lt-med gy, dt, str, sb ply-blky, sl sft, sb rthy-sm tex, v calc, rr inoc frags, tr mlst: mod-fast dtise, mod stmg, bri bl-wh cut, bri ring resd	CHK: lt-med gy, dt, str, sb ply-blky, sl sft, sb rthy-sm tex, v calc, rr inoc frags, tr mlst: mod-fast dtise, mod stmg, bri bl-wh cut, bri ring resd	CHK: lt-med gy, dt, rr wh, str, sb ply-blky, sl sft, sb rthy-sm tex, v calc, rr inoc frags, tr mlst: mod-fast dtise, mod stmg, bri bl-wh cut, bri ring resd

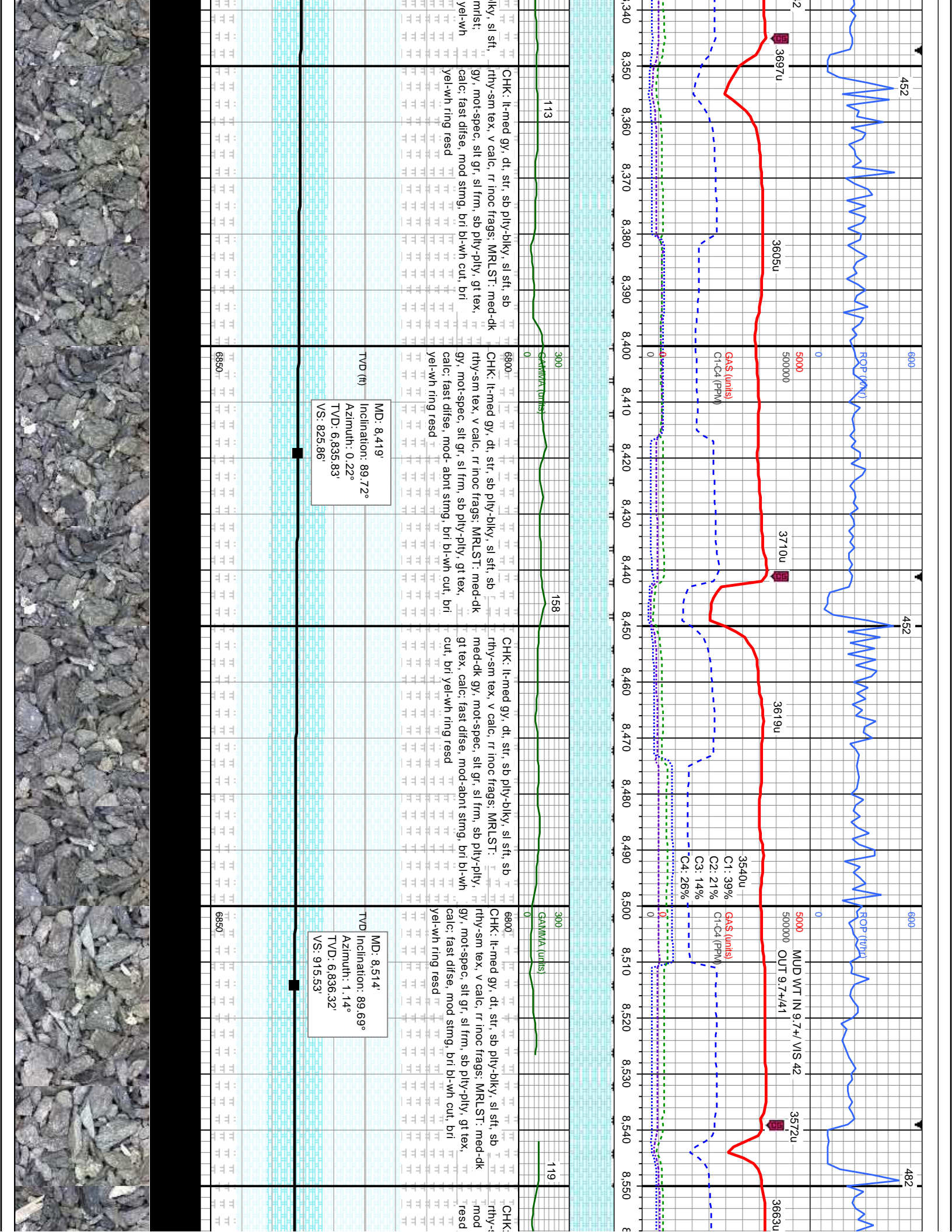


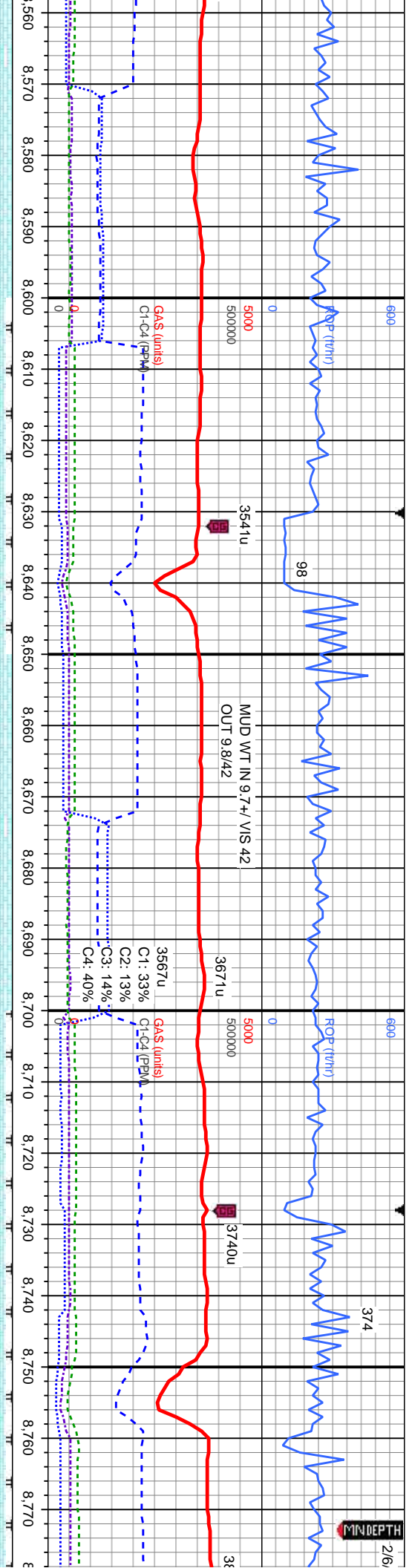


113	CHK: lt-med gy, dt, str, sb pty-blky, sl sft, sb rthy-sm tex, v calc, rr inoc frags: MRLST: med-dk gy, mot-spec, slt gr, sl frm, sb pty-pty, gt tex, calc: fast dfse, mod stmg, bri bl-wh cut, bri yel-wh ring resd
158	CHK: lt-med gy, dt, str, sb pty-blky, sl sft, sb rthy-sm tex, v calc, rr inoc frags: MRLST: med-dk gy, mot-spec, slt gr, sl frm, sb pty-pty, gt tex, calc: fast dfse, mod-abnt stmg, bri bl-wh cut, bri yel-wh ring resd
119	CHK: lt-med gy, dt, str, sb pty-blky, sl sft, sb rthy-sm tex, v calc, rr inoc frags: MRLST: med-dk gy, mot-spec, slt gr, sl frm, sb pty-pty, gt tex, calc: fast dfse, mod stmg, bri bl-wh cut, bri yel-wh ring resd

MD: 8.419'
 Inclination: 89.72°
 Azimuth: 0.22°
 TVD: 6,835.83'
 VS: 825.86'

MD: 8.514'
 Inclination: 89.69°
 Azimuth: 1.14°
 TVD: 6,836.32'
 VS: 915.53'



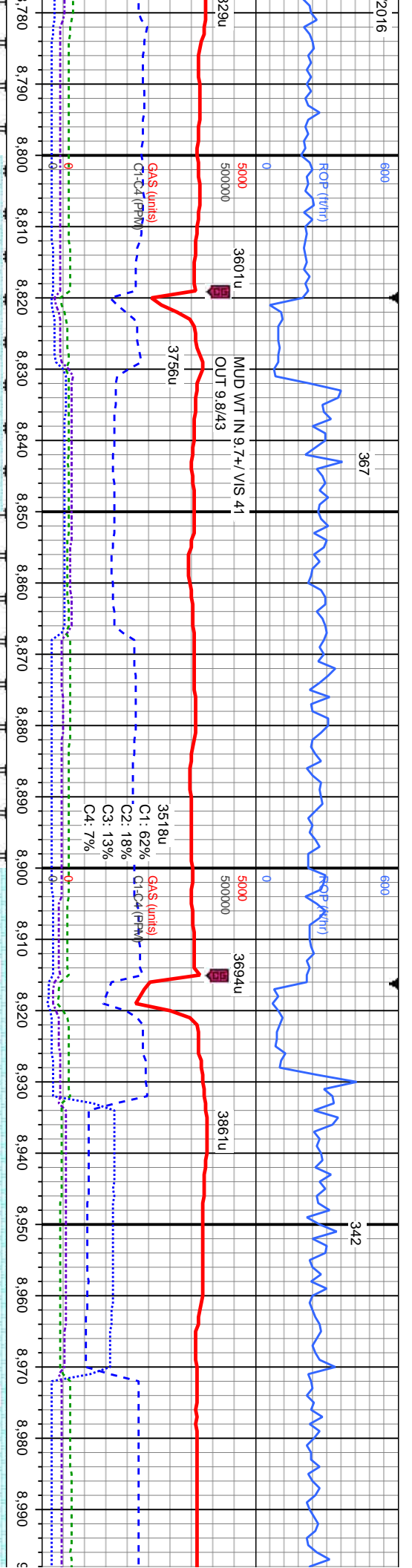


8,560	8,570	8,580	8,590	8,600	8,610	8,620	8,630	8,640	8,650	8,660	8,670	8,680	8,690	8,700	8,710	8,720	8,730	8,740	8,750	8,760	8,770	
Il-med gy, dt, str, sb pily-blky, sl sft, sb rthy-sm tex, v calc, rr inoc frags; fast difse, smng, bri bl-wh cut, bri yel-wh ring	Il-med gy, dt, str, sb pily-blky, sl sft, sb rthy-sm tex, v calc, rr inoc frags; fast difse, smng, bri bl-wh cut, bri yel-wh ring	Il-med gy, dt, str, sb pily-blky, sl sft, sb rthy-sm tex, v calc, rr inoc frags; fast difse, smng, bri bl-wh cut, bri yel-wh ring	Il-med gy, dt, str, sb pily-blky, sl sft, sb rthy-sm tex, v calc, rr inoc frags; fast difse, smng, bri bl-wh cut, bri yel-wh ring	Il-med gy, dt, str, sb pily-blky, sl sft, sb rthy-sm tex, v calc, rr inoc frags; fast difse, smng, bri bl-wh cut, bri yel-wh ring	Il-med gy, dt, str, sb pily-blky, sl sft, sb rthy-sm tex, v calc, rr inoc frags; fast difse, smng, bri bl-wh cut, bri yel-wh ring	Il-med gy, dt, str, sb pily-blky, sl sft, sb rthy-sm tex, v calc, rr inoc frags; fast difse, smng, bri bl-wh cut, bri yel-wh ring	Il-med gy, dt, str, sb pily-blky, sl sft, sb rthy-sm tex, v calc, rr inoc frags; fast difse, smng, bri bl-wh cut, bri yel-wh ring	Il-med gy, dt, str, sb pily-blky, sl sft, sb rthy-sm tex, v calc, rr inoc frags; fast difse, smng, bri bl-wh cut, bri yel-wh ring	Il-med gy, dt, str, sb pily-blky, sl sft, sb rthy-sm tex, v calc, rr inoc frags; fast difse, smng, bri bl-wh cut, bri yel-wh ring	Il-med gy, dt, str, sb pily-blky, sl sft, sb rthy-sm tex, v calc, rr inoc frags; fast difse, smng, bri bl-wh cut, bri yel-wh ring	Il-med gy, dt, str, sb pily-blky, sl sft, sb rthy-sm tex, v calc, rr inoc frags; fast difse, smng, bri bl-wh cut, bri yel-wh ring	Il-med gy, dt, str, sb pily-blky, sl sft, sb rthy-sm tex, v calc, rr inoc frags; fast difse, smng, bri bl-wh cut, bri yel-wh ring	Il-med gy, dt, str, sb pily-blky, sl sft, sb rthy-sm tex, v calc, rr inoc frags; fast difse, smng, bri bl-wh cut, bri yel-wh ring	Il-med gy, dt, str, sb pily-blky, sl sft, sb rthy-sm tex, v calc, rr inoc frags; fast difse, smng, bri bl-wh cut, bri yel-wh ring	Il-med gy, dt, str, sb pily-blky, sl sft, sb rthy-sm tex, v calc, rr inoc frags; fast difse, smng, bri bl-wh cut, bri yel-wh ring	Il-med gy, dt, str, sb pily-blky, sl sft, sb rthy-sm tex, v calc, rr inoc frags; fast difse, smng, bri bl-wh cut, bri yel-wh ring	Il-med gy, dt, str, sb pily-blky, sl sft, sb rthy-sm tex, v calc, rr inoc frags; fast difse, smng, bri bl-wh cut, bri yel-wh ring	Il-med gy, dt, str, sb pily-blky, sl sft, sb rthy-sm tex, v calc, rr inoc frags; fast difse, smng, bri bl-wh cut, bri yel-wh ring	Il-med gy, dt, str, sb pily-blky, sl sft, sb rthy-sm tex, v calc, rr inoc frags; fast difse, smng, bri bl-wh cut, bri yel-wh ring	Il-med gy, dt, str, sb pily-blky, sl sft, sb rthy-sm tex, v calc, rr inoc frags; fast difse, smng, bri bl-wh cut, bri yel-wh ring	Il-med gy, dt, str, sb pily-blky, sl sft, sb rthy-sm tex, v calc, rr inoc frags; fast difse, smng, bri bl-wh cut, bri yel-wh ring	Il-med gy, dt, str, sb pily-blky, sl sft, sb rthy-sm tex, v calc, rr inoc frags; fast difse, smng, bri bl-wh cut, bri yel-wh ring

MD: 8.609'
 Inclination: 90.4°
 Azimuth: 2.11°
 TVD: 6.836.24'
 VS: 1.005.7'

MD: 8.704'
 Inclination: 90.65°
 Azimuth: 2.37°
 TVD: 6.835.37'
 VS: 1.096.18'





2016
 690
 ROP (ft/hr)
 5000
 5000000
 3601u
 MUD WT IN 9.74 / VIS 41
 OUT 9.8/43
 3756u
 367
 8,780 8,790 8,800 8,810 8,820 8,830 8,840 8,850 8,860 8,870 8,880 8,890 8,900 8,910 8,920 8,930 8,940 8,950 8,960 8,970 8,980 8,990 9,000
 3518u
 GAS (units)
 C1: 62%
 C2: 18%
 C3: 13%
 C4: 7%
 3694u
 3861u
 342
 8,980 8,990 9,000

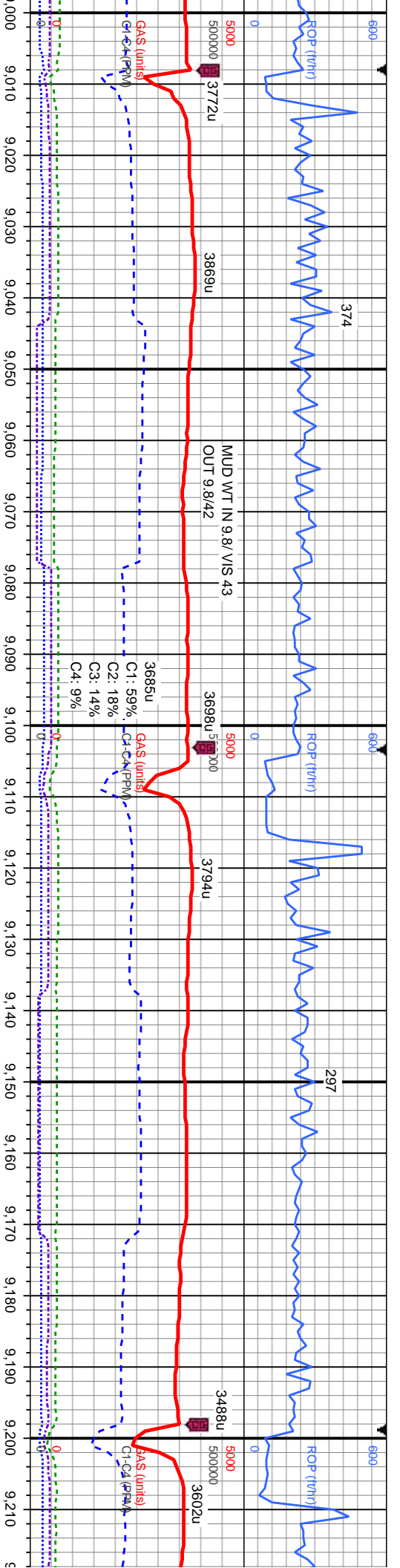
MD: 8,798'
 Inclination: 90.49°
 Azimuth: 3.35°
 TVD: 6,834.44'
 VS: 1,186.02'

MD: 8,894'
 Inclination: 90.46°
 Azimuth: 3.21°
 TVD: 6,833.64'
 VS: 1,277.97'

MD: 8,987'
 Inclination: 90.12°
 Azimuth: 2.13°
 TVD: 6,833.17'
 VS: 1,366.76'

6800
 CHK: lt-med gy, dt, str, rr wh, sb ply- sb blkly, sl
 sft, sb rthy-sm tex, v calc, tr inoc frags: MRLST:
 med-dk gy, mot-spec, slt gr, sl frm, sb ply-ply,
 mod stmg, mod bri
 yel-wh ring resd
 300
 GAMMA (units)
 0
 6850
 6800
 CHK: lt-med gy, dt, str, rr wh, sb ply- sb blkly, sl
 sft, sb rthy-sm tex, v calc, tr inoc frags: MRLST:
 med-dk gy, mot-spec, slt gr, sl frm, sb ply-ply,
 gt tex, calc: fast difse, mod stmg, bri bl-wh cut,
 bri yel-wh ring resd
 112
 GAMMA (units)
 0
 6850
 6800
 CHK: lt-med gy, dt, v rr wh, str, sb ply- sb blkly, sl
 sft, sb rthy-sm tex, v calc, tr mlst: fast difse,
 mod stmg, bri bl-wh cut, bri yel-wh ring resd
 106
 GAMMA (units)
 0
 6850
 6800
 CHK: lt-med gy, dt, v rr wh, str, sb ply- sb blkly,
 sl sft, sb rthy-sm tex, v calc, tr inoc frags, tr
 mlst: fast difse, mod stmg, bri bl-wh cut, bri
 yel-wh ring resd





6800 TVD (ft) 6850

CHK: lt-med gy, dt, v rr wh, str, sb pily- sb blk, si sft, sb rthy-sm tex, v calc, tr mlst, tr inoc frags: mod- fast difse, mod stmg, mod bri bl-wh cut, sl even yel ring resd

6800 TVD (ft) 6850

CHK: lt-med gy, dt, v rr wh, str, sb pily- sb blk, si sft, sb rthy-sm tex, v calc, tr mlst, tr inoc frags: mod- fast difse, mod stmg, mod bri bl-wh cut, sl even yel ring resd

6800 TVD (ft) 6850

CHK: lt-med gy, dt, v rr wh, str, sb pily- sb blk, si sft, sb rthy-sm tex, v calc, tr mlst, tr-abnt inoc frags: mod- fast difse, mod stmg, mod bri bl-wh cut, even yel ring resd

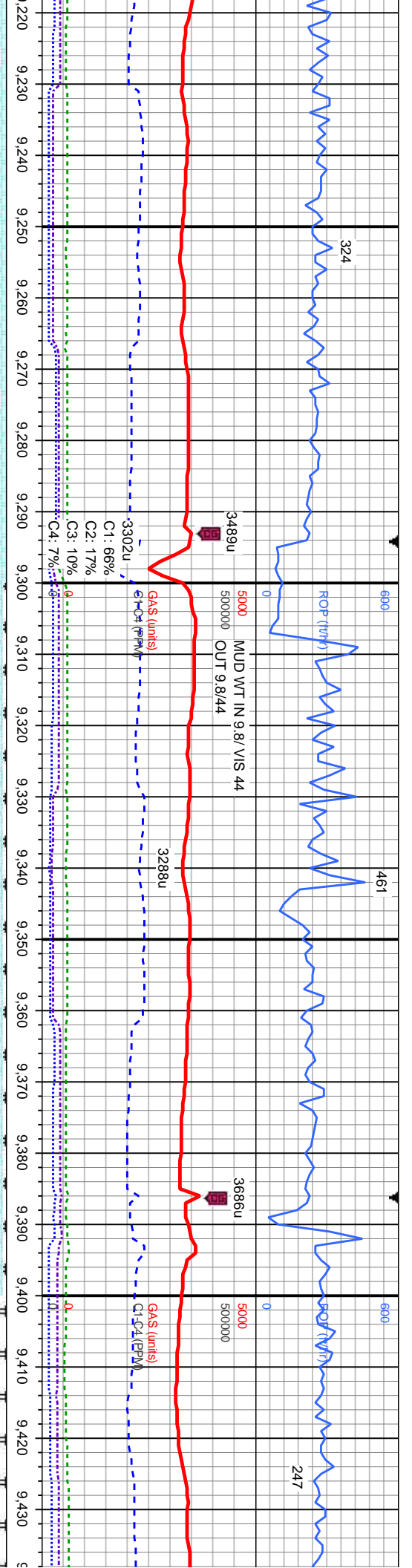
6800 TVD (ft) 6850

CHK: lt-med gy, dt, v rr wh, str, sb pily- sb blk, si sft, sb rthy-sm tex, v calc, tr mlst, tr-abnt inoc frags: mod- fast difse, mod stmg, mod bri bl-wh cut, sl even yel ring resd

MD: 9.081°
 Inclination: 90.31°
 Azimuth: 2.41°
 TVD: 6,832.82'
 VS: 1,456.31'

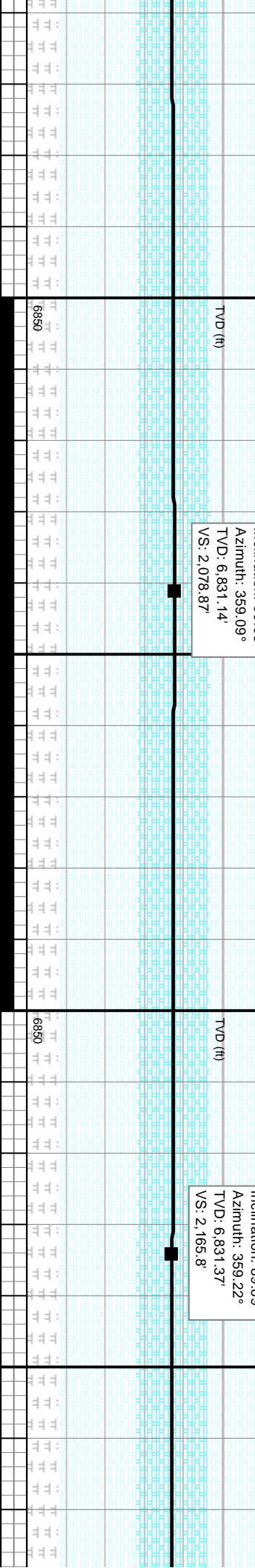
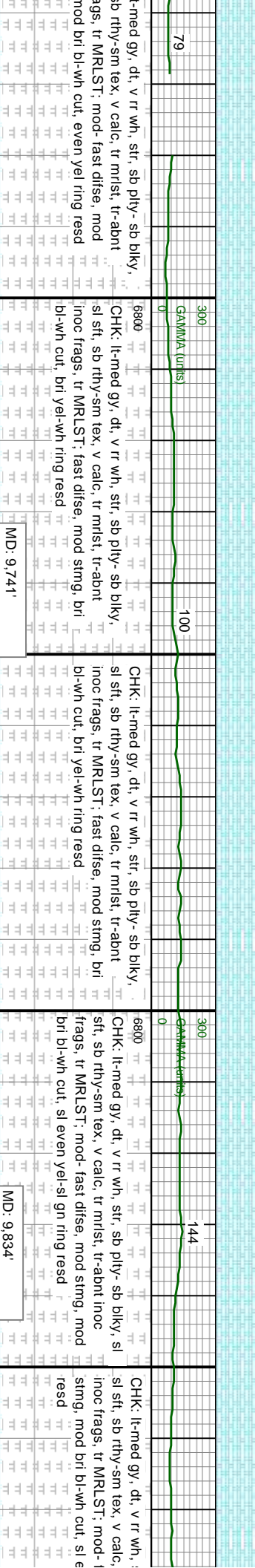
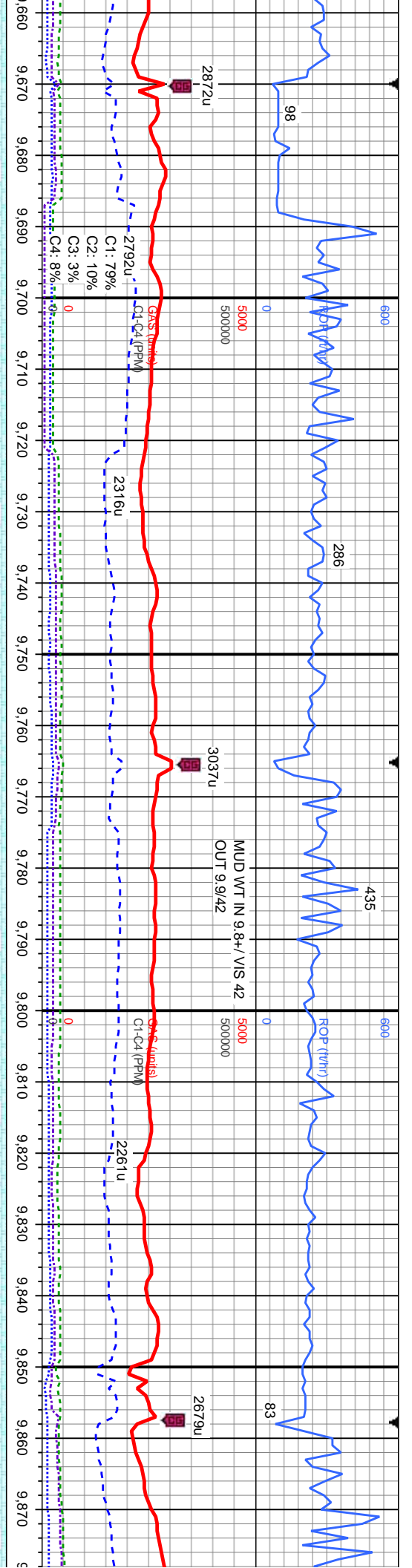
MD: 9.176°
 Inclination: 90.06°
 Azimuth: 0.88°
 TVD: 6,832.51'
 VS: 1,546.49'





Depth (ft)	106	104	85
9,220 - 9,250	It. v rr wh, str, sb ply- sb blk, fast difse, mod stimg, mod bri yel ring resd	It. v rr wh, str, sb ply- sb blk, fast difse, mod stimg, mod bri yel ring resd	It. v rr wh, str, sb ply- sb blk, fast difse, mod stimg, mod bri yel ring resd
9,250 - 9,280	CHK: It-med gy, dt, v rr wh, str, sb ply- sb blk, sft, sb rhy-sm tex, v calc, tr mlst, tr-abnt inoc frags: mod- fast difse, mod stimg, mod bri bl-wh cut, sl even yel ring resd	CHK: It-med gy, dt, str, sb ply- sb blk, sft, sb rhy-sm tex, v calc, tr-abnt inoc frags: MRLST: med-dk gy, mot-spec, sft gr, sl frm, sb ply-pty, gt tex, calc: mod- fast difse, mod stimg, mod bri bl-wh cut, even yel ring resd	CHK: It-med gy, dt, str, sb ply- sb blk, sft, sb rhy-sm tex, v calc, tr-abnt inoc frags: MRLST: med-dk gy, mot-spec, sft gr, sl frm, sb ply-pty, gt tex, calc: mod- fast difse, mod stimg, mod bri bl-wh cut, even yel ring resd
9,280 - 9,310	MD: 9.270' Inclination: 90.18° Azimuth: 1.08° TVD: 6.832.31' VS: 1.636.37'	MD: 9.363' Inclination: 90° Azimuth: 0.56° TVD: 6.832.17' VS: 1.723.22'	MD: 9.363' Inclination: 90° Azimuth: 0.56° TVD: 6.832.17' VS: 1.723.22'
9,310 - 9,340	6800 TVD (ft)	6800 TVD (ft)	6800 TVD (ft)
9,340 - 9,370	300 GAMMA (units)	300 GAMMA (units)	300 GAMMA (units)
9,370 - 9,400	6850	6850	6850

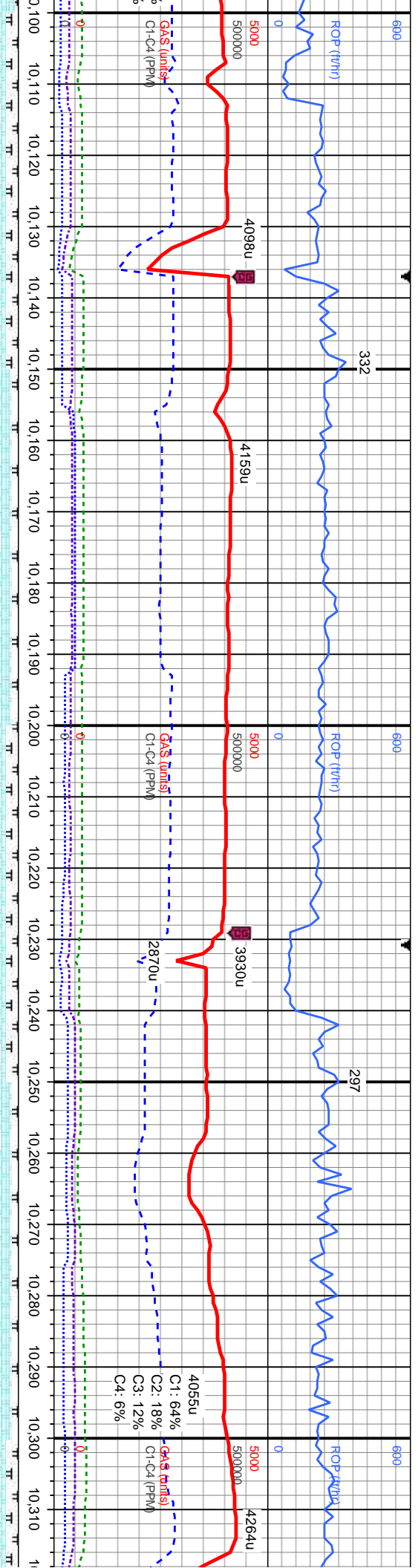




MD: 9.741'
 Inclination: 90.03°
 Azimuth: 359.09°
 TVD: 6,831.14'
 VS: 2,078.87'

MD: 9.834'
 Inclination: 89.69°
 Azimuth: 359.22°
 TVD: 6,831.37'
 VS: 2,165.8'





332

297

CHK: It-med gy, str, sb ply- sb blk, sl sft, sb rhy-sm tex, v calc, tr inoc frags: MRLST: med-dk gy, mot-spec, silt gr, sl frm, sb ply-pty, gt tex, calc: fast difse, mod stmg, bri bl-wh cut, bri yel-wh ring resd

CHK: It-med gy, str, sb ply- sb blk, sl sft, sb rhy-sm tex, v calc, tr inoc frags: MRLST: med-dk gy, mot-spec, silt gr, sl frm, sb ply-pty, gt tex, calc: fast difse, mod stmg, bri bl-wh cut, bri yel-wh ring resd

CHK: It-med gy, str, sb ply- sb blk, sl sft, sb rhy-sm tex, v calc, tr inoc frags: MRLST: med-dk gy, mot-spec, silt gr, sl frm, sb ply-pty, gt tex, calc: mod-fast difse, mod stmg, mod bri bl-wh cut, even yel ring resd

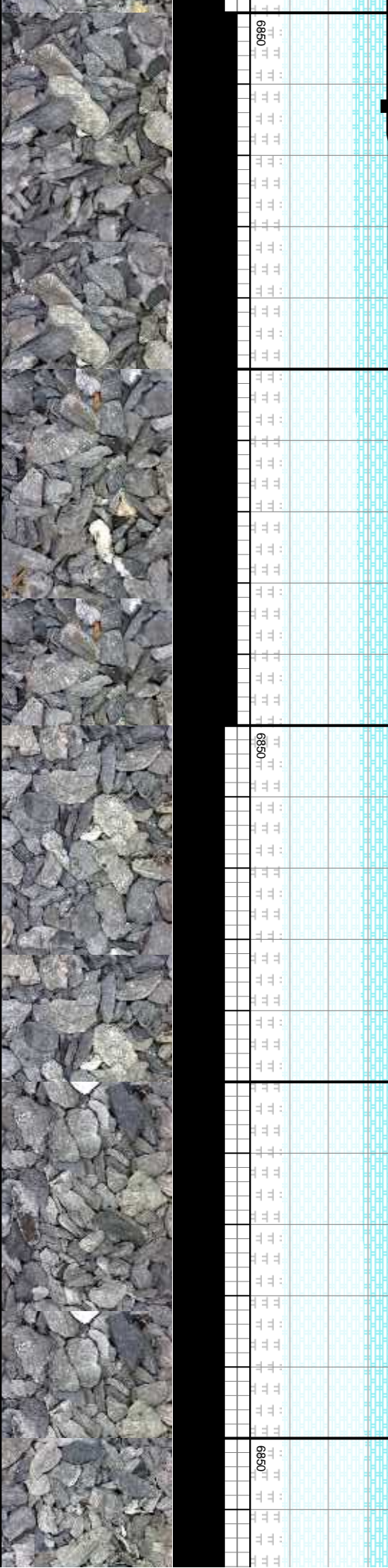
CHK: med gy, str, sb ply- sb blk, sl sft, sb rhy-sm tex, v calc, tr inoc frags: MRLST: med-dk gy, mot-spec, silt gr, sl frm, sb ply-pty, gt tex, calc: mod-fast difse, mod stmg, mod bri bl-wh cut, even yel ring resd

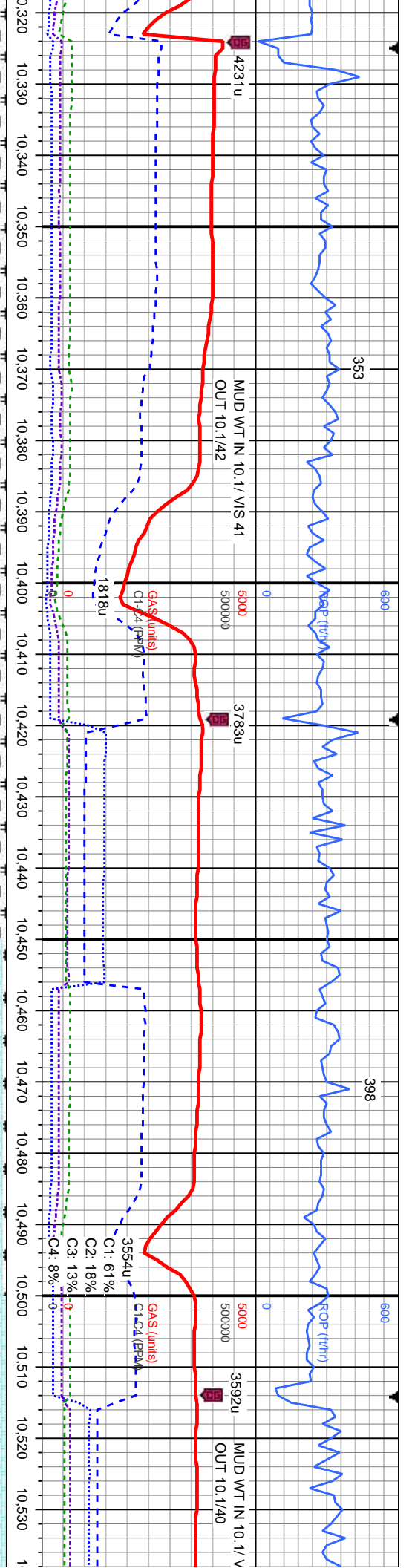
CHK: med gy, str, rhy-sm tex, v calc

MD: 10,113
 Inclination: 90.31°
 Azimuth: 0.03°
 TVD: 6,832.31'
 VS: 2,425.86'

MD: 10,208
 Inclination: 90.74°
 Azimuth: 359.72°
 TVD: 6,831.44'
 VS: 2,515.07'

MD: 10,301
 Inclination: 90.03°
 Azimuth: 359.98°
 TVD: 6,830.81'
 VS: 2,602.4'

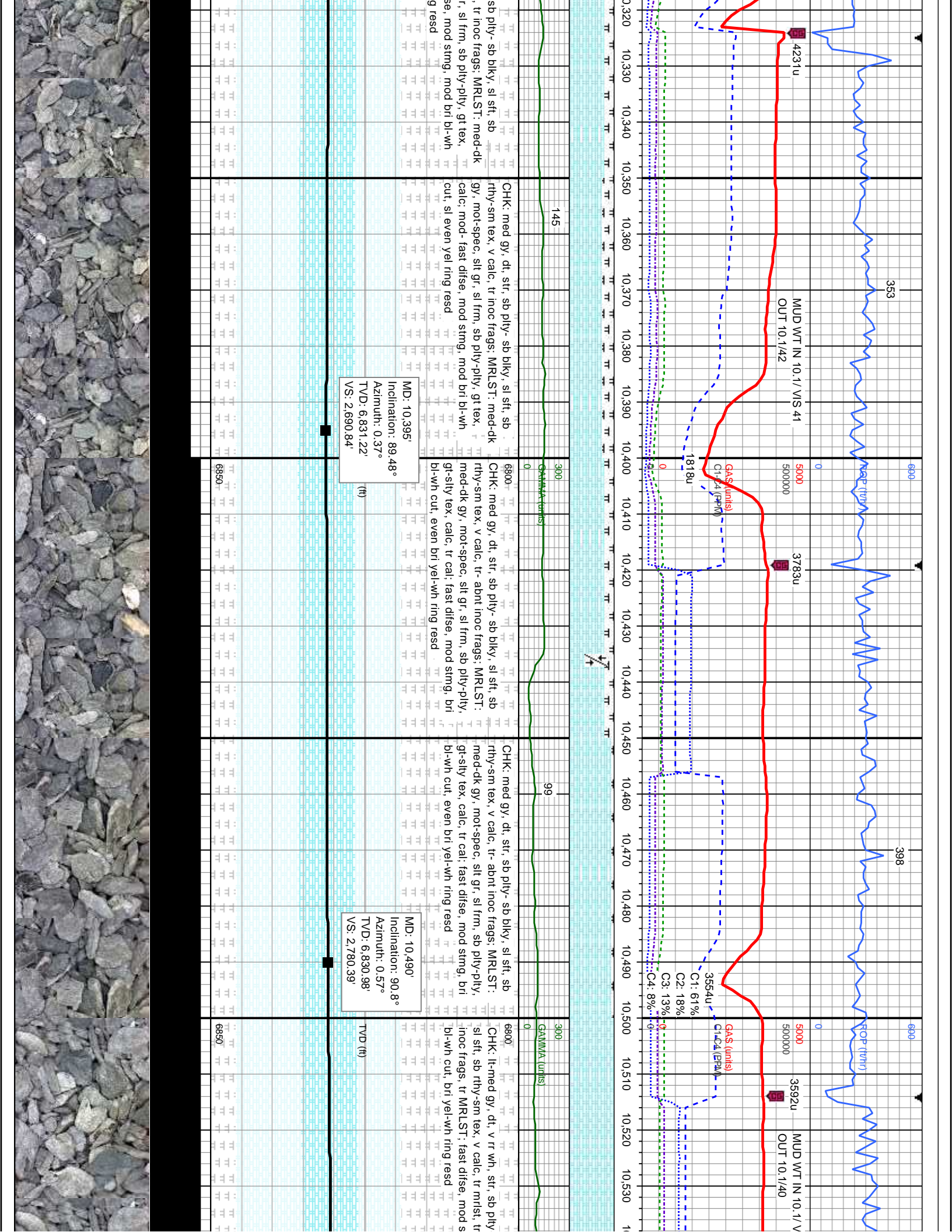


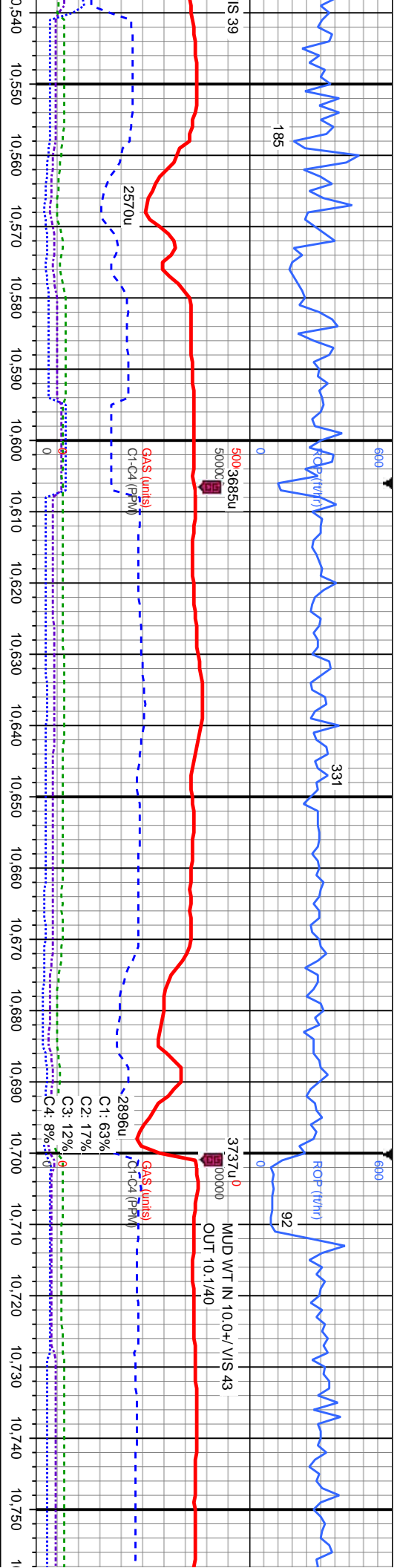


145
 300
 6800
 CHK: med gy, dt, str, sb ply- sb blk, sl sft, sb rthy-sm tex, v calc, tr inoc frags: MRLST: med-dk gy, mot-spec, slit gr, sl frm, sb ply-pty, gt tex, calc: mod- fast difse, mod stmg, mod bri bl-wh cut, sl even yel ring resd
 1818u
 99
 300
 6800
 CHK: med gy, dt, str, sb ply- sb blk, sl sft, sb rthy-sm tex, v calc, tr- abnt inoc frags: MRLST: med-dk gy, mot-spec, slit gr, sl frm, sb ply-pty, gt-sily tex, calc, tr cal: fast difse, mod stmg, bri bl-wh cut, even bri yel-wh ring resd
 3554u
 3592u
 CHK: lt-med gy, dt, v rr wh, str, sb ply- sb blk, sl sft, sb rthy-sm tex, v calc, tr inoc frags: MRLST: fast difse, mod stmg, mod s
 bl-wh cut, bri yel-wh ring resd

MD: 10,395'
 Inclination: 89.48°
 Azimuth: 0.37°
 TVD: 6,831.22'
 VS: 2,690.84'
 (ft)

MD: 10,490'
 Inclination: 90.8°
 Azimuth: 0.57°
 TVD: 6,830.98'
 VS: 2,780.39'
 (ft)



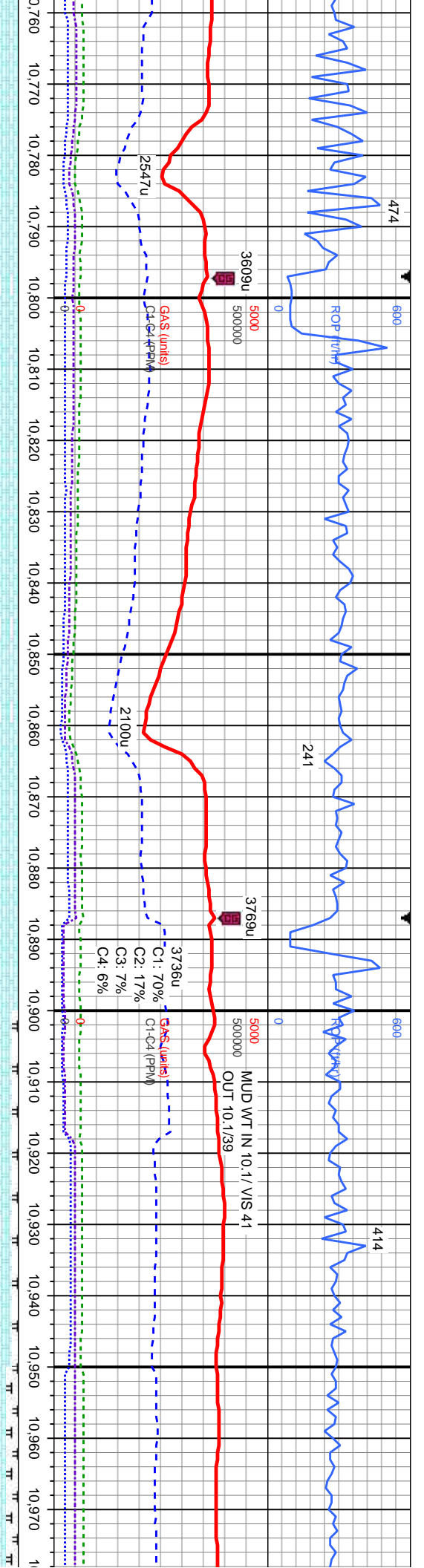


MD: 10,582'
 Inclination: 90.34°
 Azimuth: 1.23°
 TVD: 6,830.07'
 VS: 2,867.33'

MD: 10,677'
 Inclination: 90.46°
 Azimuth: 2.39°
 TVD: 6,829.41'
 VS: 2,957.6'

Depth (ft)	Gamma (lunils)	Gas (lunils)	C1-C4 (PPM)	Remarks
10,540	90	0	0	CHK: It-med gy, dt, v rr wh, str, sb ply- sb
10,550	90	0	0	CHK: It-med gy, dt, v rr wh, str, sb ply- sb
10,560	90	0	0	CHK: It-med gy, dt, v rr wh, str, sb ply- sb
10,570	90	0	0	CHK: It-med gy, dt, v rr wh, str, sb ply- sb
10,580	90	0	0	CHK: It-med gy, dt, v rr wh, str, sb ply- sb
10,590	90	0	0	CHK: It-med gy, dt, v rr wh, str, sb ply- sb
10,600	90	0	0	CHK: It-med gy, dt, v rr wh, str, sb ply- sb
10,610	90	0	0	CHK: It-med gy, dt, v rr wh, str, sb ply- sb
10,620	90	0	0	CHK: It-med gy, dt, v rr wh, str, sb ply- sb
10,630	90	0	0	CHK: It-med gy, dt, v rr wh, str, sb ply- sb
10,640	90	0	0	CHK: It-med gy, dt, v rr wh, str, sb ply- sb
10,650	90	0	0	CHK: It-med gy, dt, v rr wh, str, sb ply- sb
10,660	90	0	0	CHK: It-med gy, dt, v rr wh, str, sb ply- sb
10,670	90	0	0	CHK: It-med gy, dt, v rr wh, str, sb ply- sb
10,680	90	0	0	CHK: It-med gy, dt, v rr wh, str, sb ply- sb
10,690	90	0	0	CHK: It-med gy, dt, v rr wh, str, sb ply- sb
10,700	90	0	0	CHK: It-med gy, dt, v rr wh, str, sb ply- sb
10,710	90	0	0	CHK: It-med gy, dt, v rr wh, str, sb ply- sb
10,720	90	0	0	CHK: It-med gy, dt, v rr wh, str, sb ply- sb
10,730	90	0	0	CHK: It-med gy, dt, v rr wh, str, sb ply- sb
10,740	90	0	0	CHK: It-med gy, dt, v rr wh, str, sb ply- sb
10,750	90	0	0	CHK: It-med gy, dt, v rr wh, str, sb ply- sb





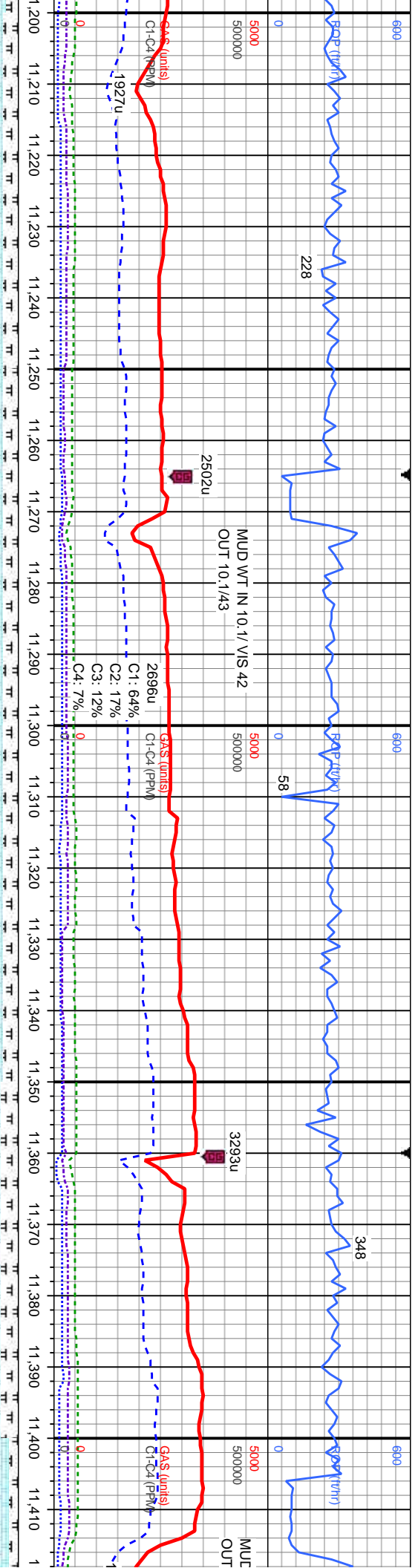
MD: 10.772°
 Inclination: 89.97°
 Azimuth: 3.12°
 TVD: 6.829.05'
 VS: 3.048.34'

MD: 10.865°
 Inclination: 90.4°
 Azimuth: 2.66°
 TVD: 6.828.75'
 VS: 3.137.24'

MD: 10.958°
 Inclination: 89.75°
 Azimuth: 0.64°
 TVD: 6.828.63'
 VS: 3.225.52'

Depth (ft)	Gamma (units)	Description
970	168	CHK: med gy, dt, str, sb ply- sb blk, rthy-sm tex, v calc, tr- abnt
960	168	CHK: med gy, dt, str, sb ply- sb blk, rthy-sm tex, v calc, tr- abnt
950	168	CHK: med gy, dt, str, sb ply- sb blk, rthy-sm tex, v calc, tr- abnt
940	168	CHK: med gy, dt, str, sb ply- sb blk, rthy-sm tex, v calc, tr- abnt
930	168	CHK: med gy, dt, str, sb ply- sb blk, rthy-sm tex, v calc, tr- abnt
920	168	CHK: med gy, dt, str, sb ply- sb blk, rthy-sm tex, v calc, tr- abnt
910	168	CHK: med gy, dt, str, sb ply- sb blk, rthy-sm tex, v calc, tr- abnt
900	168	CHK: med gy, dt, str, sb ply- sb blk, rthy-sm tex, v calc, tr- abnt
890	168	CHK: med gy, dt, str, sb ply- sb blk, rthy-sm tex, v calc, tr- abnt
880	168	CHK: med gy, dt, str, sb ply- sb blk, rthy-sm tex, v calc, tr- abnt
870	168	CHK: med gy, dt, str, sb ply- sb blk, rthy-sm tex, v calc, tr- abnt
860	168	CHK: med gy, dt, str, sb ply- sb blk, rthy-sm tex, v calc, tr- abnt
850	168	CHK: med gy, dt, str, sb ply- sb blk, rthy-sm tex, v calc, tr- abnt
840	168	CHK: med gy, dt, str, sb ply- sb blk, rthy-sm tex, v calc, tr- abnt
830	168	CHK: med gy, dt, str, sb ply- sb blk, rthy-sm tex, v calc, tr- abnt
820	168	CHK: med gy, dt, str, sb ply- sb blk, rthy-sm tex, v calc, tr- abnt
810	168	CHK: med gy, dt, str, sb ply- sb blk, rthy-sm tex, v calc, tr- abnt
800	168	CHK: med gy, dt, str, sb ply- sb blk, rthy-sm tex, v calc, tr- abnt
790	168	CHK: med gy, dt, str, sb ply- sb blk, rthy-sm tex, v calc, tr- abnt
780	168	CHK: med gy, dt, str, sb ply- sb blk, rthy-sm tex, v calc, tr- abnt
770	168	CHK: med gy, dt, str, sb ply- sb blk, rthy-sm tex, v calc, tr- abnt
760	168	CHK: med gy, dt, str, sb ply- sb blk, rthy-sm tex, v calc, tr- abnt





6800 CHK: med gy, dt, str, sb ply- sb blk, sl sft, sb rthy-sm tex, v calc, tr- abnt inoc frags; MRLST: med-dk gy, mot-spec, slt gr, sl frm, sb ply-pty, gt-sily tex, calc, tr cal; mod- fast difse, sl- mod stmg, mod bri bl-wh cut, even yel ring resd

6800 CHK: med gy, dt, str, sb ply- sb blk, sl sft, sb rthy-sm tex, v calc, tr- abnt inoc frags; MRLST: med-dk gy, mot-spec, slt gr, sl frm, sb ply-pty, gt-sily tex, calc, tr cal; mod- fast difse, sl- mod stmg, mod bri bl-wh cut, even yel ring resd

6800 CHK: med gy, dt, str, sb ply- sb blk, sl sft, sb rthy-sm tex, v calc, tr- abnt inoc frags; MRLST: med-dk gy, mot-spec, slt gr, sl frm, sb ply-pty, gt-sily tex, calc, tr cal; mod- fast difse, sl- mod stmg, mod bri bl-wh cut, even yel ring resd

6800 CHK: med gy, dt, str, sb ply- sb blk, sl sft, sb rthy-sm tex, v calc, tr- abnt inoc frags; MRLST: med-dk gy, mot-spec, slt gr, sl frm, sb ply-pty, gt-sily tex, calc, tr cal; mod- fast difse, sl- mod stmg, mod bri bl-wh cut, even yel ring resd

MD: 11.240'
 Inclination: 89.51°
 Azimuth: 4.02°
 TVD: 6,830.89'
 VS: 3,492.96'

MD: 11.334'
 Inclination: 89.78°
 Azimuth: 1.73°
 TVD: 6,831.47'
 VS: 3,582.8'

