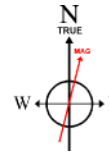


BAYSWATER E & P LLC

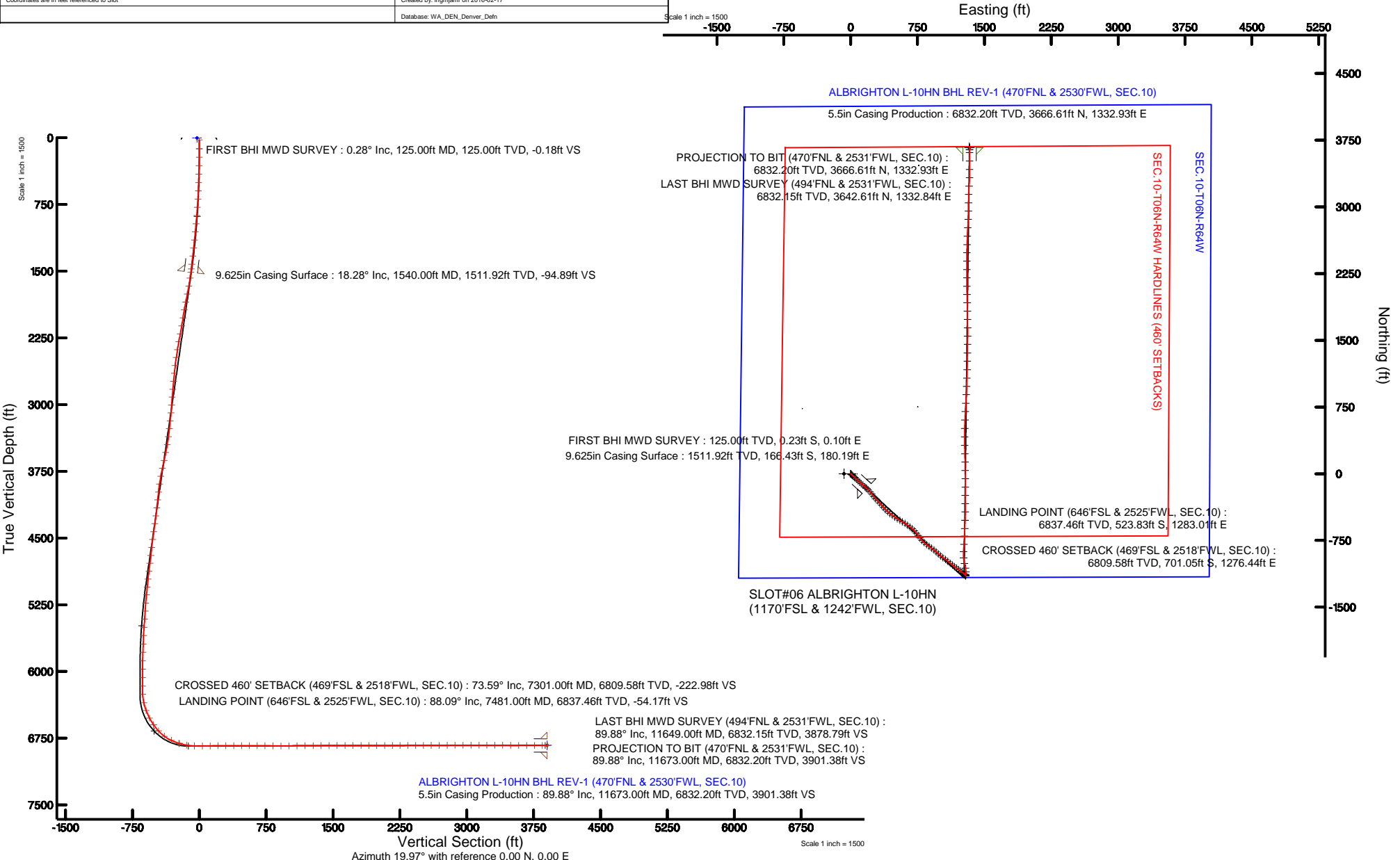
Location: COLORADO Slot: SLOT#06 ALBRIGHTON L-10HN (1170'FSL & 1242'FWL, SEC.10)
 Field: WELD COUNTY (NAD83/TRUE NORTH) Well: ALBRIGHTON L-10HN
 Facility: SEC.10-T06N-R64W Wellbore: ALBRIGHTON L-10HN PWB

Plot reference wellpath is ALBRIGHTON L-10HN (REV-A.0) PWP	
True vertical depths are referenced to FRONTIER 8 (RKB)	Grid System: NAD83 / Lambert Colorado SP, Northern Zone (501), US feet
Measured depths are referenced to FRONTIER 8 (RKB)	* = Wellpath was transformed from a different geodetic datum
FRONTIER 8 (RKB) to Mean Sea Level: 4830 feet	North Reference: True north
Mean Sea Level to Mud line (At Slot: SLOT#06 ALBRIGHTON L-10HN (1170'FSL & 1242'FWL, SEC.10)): 0 feet	Scale: True distance
Coordinates are in feet referenced to Slot	Depths are in feet
	Created by: ingmjmr on 2016-02-17
	Database: WA_DEN_Denver_Defn



BGGM (1945.0 to 2017.0) Dip: 67.07° Field: 52637.1 nT
 Magnetic North is 8.38 degrees East of True North (at 1/19/2016)

To correct azimuth from Magnetic to True add 8.38 degrees



REFERENCE WELLPATH IDENTIFICATION

Operator	BAYSWATER E & P LLC	Slot	SLOT#06 ALBRIGHTON L-10HN (1170'FSL & 1242'FWL, SEC.10)
Area	COLORADO	Well	ALBRIGHTON L-10HN
Field	WELD COUNTY (NAD83/TRUE NORTH)	Wellbore	ALBRIGHTON L-10HN AWB
Facility	SEC.10-T06N-R64W		

REPORT SETUP INFORMATION

Projection System	NAD83 / Lambert Colorado SP, Northern Zone (501), US feet	Software System	WellArchitect® 5.0
North Reference	True	User	Ingmjmr
Scale	0.999966	Report Generated	2/17/2016 at 11:07:04 AM
Convergence at slot	0.62° East	Database/Source file	WA_DEN_Denver_Defn/ALBRIGHTON_L-10HN_AWP.xml

WELLPATH LOCATION

	Local coordinates		Grid coordinates		Geographic coordinates	
	North[ft]	East[ft]	Easting[US ft]	Northing[US ft]	Latitude	Longitude
Slot Location	0.40	75.09	3266633.60	1425198.03	40°29'47.807"N	104°32'28.532"W
Facility Reference Pt			3266558.51	1425196.82	40°29'47.803"N	104°32'29.504"W
Field Reference Pt			3174587.00	1430859.75	40°30'51.890"N	104°52'19.470"W

WELLPATH DATUM

Calculation method	Minimum curvature	FRONTIER 8 (RKB) to Facility Vertical Datum	4830.00ft
Horizontal Reference Pt	Slot	FRONTIER 8 (RKB) to Mean Sea Level	4830.00ft
Vertical Reference Pt	FRONTIER 8 (RKB)	FRONTIER 8 (RKB) to Mud Line at Slot (SLOT#06 ALBRIGHTON L-10HN (1170'FSL & 1242'FWL, SEC.10))	4830.00ft
MD Reference Pt	FRONTIER 8 (RKB)	Section Origin	N 0.00, E 0.00 ft
Field Vertical Reference	Mean Sea Level	Section Azimuth	19.97°

Actual Wellpath Report

ALBRIGHTON L-10HN AWP

REFERENCE WELLPATH IDENTIFICATION

Operator	BAYSWATER E & P LLC	Slot	SLOT#06 ALBRIGHTON L-10HN (1170'FSL & 1242'FWL, SEC.10)
Area	COLORADO	Well	ALBRIGHTON L-10HN
Field	WELD COUNTY (NAD83/TRUE NORTH)	Wellbore	ALBRIGHTON L-10HN AWB
Facility	SEC.10-T06N-R64W		

WELLPATH DATA (128 stations) † = interpolated/extrapolated station

MD [ft]	Inclination [°]	Azimuth [°]	TVD [ft]	Vert Sect [ft]	North [ft]	East [ft]	DLS [°/100ft]	Comments
0.00†	0.000	156.570	0.00	0.00	0.00	0.00	0.00	
23.00	0.000	156.570	23.00	0.00	0.00	0.00	0.00	
125.00	0.280	156.570	125.00	-0.18	-0.23	0.10	0.27	FIRST BHI MWD SURVEY
219.00	1.240	131.590	218.99	-0.72	-1.11	0.95	1.06	
315.00	2.930	136.070	314.92	-2.19	-3.57	3.43	1.77	
409.00	3.990	135.000	408.75	-4.63	-7.61	7.41	1.13	
504.00	5.130	128.790	503.45	-7.39	-12.61	13.06	1.31	
597.00	6.670	131.750	595.95	-10.74	-18.81	20.33	1.69	
692.00	8.320	135.440	690.14	-15.74	-27.39	29.27	1.81	
786.00	10.320	129.600	782.90	-21.50	-37.60	40.53	2.35	
878.00	11.520	135.090	873.23	-28.17	-49.36	53.36	1.72	
973.00	12.650	134.080	966.12	-36.44	-63.31	67.54	1.21	
1066.00	13.850	133.130	1056.65	-44.98	-78.01	82.97	1.31	
1161.00	14.510	133.010	1148.75	-54.11	-93.90	99.98	0.70	
1256.00	15.920	131.370	1240.42	-63.52	-110.63	118.46	1.55	
1350.00	16.290	131.740	1330.73	-73.12	-127.93	137.97	0.41	
1445.00	17.710	132.920	1421.58	-83.70	-146.64	158.49	1.54	
1502.00	18.080	131.850	1475.82	-90.37	-158.44	171.43	0.87	
1609.00	18.650	134.650	1577.37	-103.70	-181.55	195.97	0.98	
1704.00	19.480	138.740	1667.16	-117.67	-204.13	217.22	1.66	
1799.00	19.650	142.660	1756.68	-133.92	-228.74	237.36	1.39	
1895.00	20.570	142.710	1846.83	-151.76	-254.99	257.37	0.96	
1990.00	20.470	137.040	1935.81	-168.35	-280.43	278.80	2.09	
2085.00	20.270	133.790	2024.87	-182.56	-303.97	302.00	1.21	
2181.00	20.450	136.840	2114.88	-196.85	-327.71	325.48	1.12	
2276.00	20.440	141.750	2203.90	-213.09	-352.85	347.10	1.80	
2370.00	20.540	138.670	2291.96	-229.66	-378.12	368.16	1.15	
2466.00	20.400	134.790	2381.90	-244.77	-402.56	391.15	1.42	
2561.00	20.580	132.370	2470.89	-258.08	-425.47	415.24	0.91	
2656.00	20.520	128.590	2559.85	-269.76	-447.11	440.59	1.40	
2751.00	20.620	124.670	2648.80	-279.32	-467.02	467.36	1.45	
2847.00	20.830	125.070	2738.58	-288.06	-486.44	495.24	0.26	
2942.00	20.700	123.170	2827.41	-296.30	-505.33	523.12	0.72	
3037.00	20.920	122.840	2916.22	-303.91	-523.71	551.42	0.26	
3132.00	20.790	120.390	3004.99	-310.74	-541.44	580.21	0.93	
3227.00	20.700	122.870	3093.84	-317.53	-559.08	608.86	0.93	
3322.00	21.040	126.330	3182.61	-326.09	-578.30	636.70	1.35	
3417.00	20.970	126.070	3271.29	-335.61	-598.41	664.18	0.12	
3512.00	20.460	130.600	3360.16	-346.17	-619.23	690.53	1.77	
3608.00	20.610	136.940	3450.07	-359.75	-642.49	714.81	2.32	
3703.00	20.970	142.060	3538.89	-376.36	-668.12	736.68	1.95	
3798.00	20.500	143.200	3627.74	-394.51	-694.85	757.09	0.65	
3893.00	21.680	144.600	3716.37	-413.60	-722.47	777.23	1.35	
3989.00	21.540	136.320	3805.65	-431.50	-749.68	799.67	3.18	
4084.00	21.720	131.410	3893.96	-445.67	-773.92	824.90	1.91	

REFERENCE WELLPATH IDENTIFICATION

Operator	BAYSWATER E & P LLC	Slot	SLOT#06 ALBRIGHTON L-10HN (1170'FSL & 1242'FWL, SEC.10)
Area	COLORADO	Well	ALBRIGHTON L-10HN
Field	WELD COUNTY (NAD83/TRUE NORTH)	Wellbore	ALBRIGHTON L-10HN AWB
Facility	SEC.10-T06N-R64W		

WELLPATH DATA (128 stations) † = interpolated/extrapolated station

MD [ft]	Inclination [°]	Azimuth [°]	TVD [ft]	Vert Sect [ft]	North [ft]	East [ft]	DLS ["/100ft]	Comments
4179.00	21.240	127.420	3982.37	-457.26	-796.00	851.76	1.62	
4274.00	20.890	125.400	4071.02	-466.92	-816.27	879.23	0.85	
4369.00	20.750	127.030	4159.82	-476.37	-836.22	906.47	0.63	
4465.00	20.460	129.780	4249.68	-487.04	-857.20	932.94	1.05	
4560.00	20.720	131.250	4338.61	-498.77	-878.90	958.34	0.61	
4655.00	20.620	131.460	4427.50	-511.00	-901.06	983.51	0.13	
4750.00	20.820	131.060	4516.35	-523.20	-923.22	1008.77	0.26	
4845.00	20.860	126.020	4605.15	-533.96	-944.26	1035.19	1.89	
4942.00	20.630	124.590	4695.86	-543.04	-964.12	1063.22	0.57	
5037.00	20.790	129.510	4784.72	-552.91	-984.35	1090.01	1.84	
5132.00	21.060	131.640	4873.46	-564.85	-1006.41	1115.77	0.85	
5226.00	18.320	125.670	4961.97	-575.09	-1026.26	1140.41	3.61	
5320.00	19.240	125.900	5050.96	-583.34	-1043.95	1164.95	0.98	
5414.00	18.640	128.250	5139.87	-592.30	-1062.33	1189.30	1.03	
5509.00	15.170	127.650	5230.75	-600.84	-1079.33	1211.07	3.66	
5602.00	14.110	124.370	5320.73	-607.36	-1093.16	1230.06	1.45	
5696.00	13.380	126.270	5412.04	-613.26	-1106.07	1248.29	0.91	
5789.00	10.090	135.230	5503.09	-619.76	-1118.22	1262.70	4.03	
5883.00	7.470	129.210	5595.98	-625.29	-1127.93	1273.24	2.95	
5978.00	5.000	132.350	5690.42	-628.90	-1134.63	1281.09	2.62	
6072.00	3.710	147.140	5784.15	-632.30	-1139.94	1285.76	1.81	
6167.00	3.030	151.600	5878.98	-635.82	-1144.73	1288.63	0.77	
6262.00	0.100	331.660	5973.94	-637.43	-1146.87	1289.78	3.29	
6357.00	0.150	50.810	6068.94	-637.27	-1146.72	1289.84	0.17	
6452.00	0.220	145.400	6163.94	-637.27	-1146.79	1290.04	0.29	
6545.00	2.670	10.490	6256.91	-635.24	-1144.80	1290.53	3.04	
6640.00	13.940	2.140	6350.76	-622.12	-1131.15	1291.37	11.90	
6733.00	20.880	0.890	6439.45	-595.76	-1103.35	1292.04	7.47	
6827.00	31.340	349.140	6523.79	-558.81	-1062.45	1287.68	12.36	
6920.00	39.870	347.150	6599.34	-512.91	-1009.54	1276.47	9.26	
7013.00	45.190	355.640	6667.90	-457.71	-947.49	1267.32	8.40	
7106.00	53.770	2.460	6728.31	-391.71	-876.94	1266.42	10.77	
7201.00	66.580	4.090	6775.46	-312.91	-794.83	1271.20	13.57	
7295.00	73.080	2.440	6807.86	-228.46	-706.79	1276.19	7.11	
7301.00†	73.595	2.410	6809.58	-222.98	-701.05	1276.44	8.59	CROSSED 460' SETBACK (469'FSL & 2518'FWL, SEC.10)
7387.00	80.970	1.990	6828.50	-143.15	-617.28	1279.65	8.59	
7481.00	88.090	2.130	6837.46	-54.17	-523.83	1283.01	7.58	LANDING POINT (646'FSL & 2525'FWL, SEC.10)
7576.00	91.290	0.340	6837.97	35.78	-428.87	1285.06	3.86	
7668.00	91.080	359.570	6836.07	122.21	-336.89	1284.99	0.87	
7762.00	90.490	0.430	6834.78	210.55	-242.90	1284.99	1.11	
7855.00	89.660	0.170	6834.66	298.12	-149.90	1285.47	0.94	
7949.00	89.750	359.600	6835.14	386.40	-55.90	1285.28	0.61	
8042.00	90.060	359.430	6835.30	473.54	37.10	1284.50	0.38	
8136.00	90.250	358.840	6835.04	561.39	131.08	1283.08	0.66	
8230.00	90.000	358.740	6834.84	649.04	225.06	1281.09	0.29	

REFERENCE WELLPATH IDENTIFICATION

Operator	BAYSWATER E & P LLC	Slot	SLOT#06 ALBRIGHTON L-10HN (1170'FSL & 1242'FWL, SEC.10)
Area	COLORADO	Well	ALBRIGHTON L-10HN
Field	WELD COUNTY (NAD83/TRUE NORTH)	Wellbore	ALBRIGHTON L-10HN AWP
Facility	SEC.10-T06N-R64W		

WELLPATH DATA (128 stations)

MD [ft]	Inclination [°]	Azimuth [°]	TVD [ft]	Vert Sect [ft]	North [ft]	East [ft]	DLS ["/100ft]	Comments
8324.00	89.540	359.080	6835.21	736.76	319.04	1279.30	0.61	
8419.00	89.720	0.220	6835.83	825.85	414.04	1278.72	1.21	
8514.00	89.690	1.140	6836.32	915.51	509.03	1279.85	0.97	
8609.00	90.400	2.110	6836.24	1005.68	603.99	1282.55	1.27	
8704.00	90.650	2.370	6835.37	1096.17	698.91	1286.26	0.38	
8798.00	90.490	3.350	6834.44	1186.00	792.79	1290.95	1.06	
8894.00	90.460	3.210	6833.64	1277.96	888.63	1296.44	0.15	
8987.00	90.120	2.130	6833.17	1366.75	981.53	1300.77	1.22	
9081.00	90.310	2.410	6832.82	1456.30	1075.45	1304.50	0.36	
9176.00	90.060	0.880	6832.51	1546.48	1170.41	1307.22	1.63	
9270.00	90.180	1.080	6832.31	1635.36	1264.40	1308.83	0.25	
9363.00	90.000	0.560	6832.17	1723.21	1357.39	1310.16	0.59	
9459.00	90.090	0.890	6832.09	1813.85	1453.38	1311.38	0.36	
9553.00	90.180	0.510	6831.87	1902.58	1547.37	1312.53	0.42	
9646.00	90.340	359.470	6831.45	1989.98	1640.37	1312.51	1.13	
9741.00	90.030	359.090	6831.14	2078.86	1735.36	1311.32	0.52	
9834.00	89.690	359.220	6831.37	2165.79	1828.35	1309.94	0.39	
9927.00	89.970	358.030	6831.64	2252.41	1921.32	1307.71	1.31	
10020.00	89.450	358.590	6832.11	2338.84	2014.28	1304.97	0.82	
10113.00	90.310	0.030	6832.31	2425.85	2107.27	1303.85	1.80	
10208.00	90.740	359.720	6831.44	2515.07	2202.26	1303.64	0.56	
10301.00	90.030	359.980	6830.81	2602.39	2295.26	1303.40	0.81	
10395.00	89.480	0.370	6831.22	2690.83	2389.26	1303.69	0.72	
10490.00	90.800	0.570	6830.98	2780.38	2484.25	1304.47	1.41	
10582.00	90.340	1.230	6830.07	2867.33	2576.24	1305.91	0.87	
10677.00	90.460	2.390	6829.41	2957.60	2671.18	1308.91	1.23	
10772.00	89.970	3.120	6829.05	3048.34	2766.07	1313.48	0.93	
10865.00	90.400	2.660	6828.75	3137.24	2858.95	1318.17	0.68	
10958.00	89.750	0.640	6828.63	3225.52	2951.91	1320.84	2.28	
11052.00	89.570	0.770	6829.18	3314.25	3045.90	1322.00	0.24	
11146.00	89.420	1.430	6830.01	3403.20	3139.88	1323.80	0.72	
11240.00	89.510	4.020	6830.89	3492.96	3233.76	1328.27	2.76	
11334.00	89.780	1.730	6831.47	3582.80	3327.63	1332.99	2.45	
11428.00	89.690	359.500	6831.91	3671.48	3421.62	1334.00	2.37	
11522.00	90.220	359.390	6831.98	3759.51	3515.62	1333.09	0.58	
11616.00	89.720	0.170	6832.03	3847.74	3609.62	1332.72	0.99	
11649.00	89.880	0.220	6832.15	3878.79	3642.61	1332.84	0.51	LAST BHI MWD SURVEY (494'FNL & 2531'FWL, SEC.10)
11673.00	89.880	0.220	6832.20	3901.38	3666.61	1332.93	0.00	PROJECTION TO BIT (470'FNL & 2531'FWL, SEC.10)

Actual Wellpath Report

ALBRIGHTON L-10HN AWP

REFERENCE WELLPATH IDENTIFICATION

Operator	BAYSWATER E & P LLC	Slot	SLOT#06 ALBRIGHTON L-10HN (1170'FSL & 1242'FWL, SEC.10)
Area	COLORADO	Well	ALBRIGHTON L-10HN
Field	WELD COUNTY (NAD83/TRUE NORTH)	Wellbore	ALBRIGHTON L-10HN AWB
Facility	SEC.10-T06N-R64W		

HOLE & CASING SECTIONS - Ref Wellbore: ALBRIGHTON L-10HN AWB Ref Wellpath: ALBRIGHTON L-10HN AWP

String/Diameter	Start MD [ft]	End MD [ft]	Interval [ft]	Start TVD [ft]	End TVD [ft]	Start N/S [ft]	Start E/W [ft]	End N/S [ft]	End E/W [ft]
13.5in Open Hole	23.00	1570.00	1547.00	23.00	1540.40	0.00	0.00	-172.91	187.07
9.625in Casing Surface	23.00	1540.00	1517.00	23.00	1511.92	0.00	0.00	-166.43	180.19
8.75in Open Hole	1570.00	11673.00	10103.00	1540.40	6832.20	-172.91	187.07	3666.61	1332.93
5.5in Casing Production	23.00	11673.00	11650.00	23.00	6832.20	0.00	0.00	3666.61	1332.93

TARGETS

Name	TVD [ft]	North [ft]	East [ft]	Grid East [US ft]	Grid North [US ft]	Latitude	Longitude	Shape
SEC.10-T06N-R64W	1.00	-0.40	-75.09	3266558.51	1425196.82	40°29'47.803"N	104°32'29.504"W	polygon
ALBRIGHTON L-10HN BHL REV-1 (470'FNL & 2530'FWL, SEC.10)	6830.00	3666.60	1332.30	3267926.13	1428878.69	40°30'24.038"N	104°32'11.284"W	point
SEC.10-T06N-R64W HARDLINES (460' SETBACKS)	7001.00	-0.40	-75.09	3266558.51	1425196.82	40°29'47.803"N	104°32'29.504"W	polygon

WELLPATH COMPOSITION - Ref Wellbore: ALBRIGHTON L-10HN AWB Ref Wellpath: ALBRIGHTON L-10HN AWP

Start MD [ft]	End MD [ft]	Positional Uncertainty Model	Log Name/Comment	Wellbore
23.00	1502.00	Custom NaviTrak (Standard) (Rockies 0.03Gt model)	BHI MWD/NAVITRAK (STD) 13.5" HOLE <125-1502>	ALBRIGHTON L-10HN AWB
1502.00	11649.00	Custom NaviTrak (Short spacing) (AT Curve sf 0.01) (Rockies 0.03Gt model)	BHI MWD/NAVITRAK (AT-CURVE; SHORT SPACING) 8.75" HOLE <1609-11649>	ALBRIGHTON L-10HN AWB
11649.00	11673.00	Blind Drilling (std)	Projection to bit	ALBRIGHTON L-10HN AWB

REFERENCE WELLPATH IDENTIFICATION

Operator	BAYSWATER E & P LLC	Slot	SLOT#06 ALBRIGHTON L-10HN (1170'FSL & 1242'FWL, SEC.10)
Area	COLORADO	Well	ALBRIGHTON L-10HN
Field	WELD COUNTY (NAD83/TRUE NORTH)	Wellbore	ALBRIGHTON L-10HN AWB
Facility	SEC.10-T06N-R64W		

WELLPATH COMMENTS

MD [ft]	Inclination [°]	Azimuth [°]	TVD [ft]	Comment
125.00	0.280	156.570	125.00	FIRST BHI MWD SURVEY
7301.00	73.595	2.410	6809.58	CROSSED 460' SETBACK (469'FSL & 2518'FWL, SEC.10)
7481.00	88.090	2.130	6837.46	LANDING POINT (646'FSL & 2525'FWL, SEC.10)
11649.00	89.880	0.220	6832.15	LAST BHI MWD SURVEY (494'FNL & 2531'FWL, SEC.10)
11673.00	89.880	0.220	6832.20	PROJECTION TO BIT (470'FNL & 2531'FWL, SEC.10)