

COLUMBINE LOGGING

Scale: 5" / 100'
Measured Depth Log

Well Name Albrighton K-10HC

Location S10 T6N R64W

State Colorado

Country United States

API Number 05-123-42495

Geographic Region DJ Basin

Spud Date 1/31/2016

Surface Coordinates 40.496613/- 104.541313
1170 FSL, 1242 FWL

Bottom Hole Coordinates 470 FFNLL, 2365 FFWLL

County Weld

Rig Number Frontier (Utah) 8

AFE # 42495

Field Wattenberg

Drilling Completed 3/4/2016

Ground Elevation 4807'

K.B. Elevation 4830'

Logged Interval 6000' **To** 11751'

Total Depth 11751'

Formation Codell

Type of Drilling Fluid WBM

Operator

Company Bayswater Exploration & Production, LLC.

Address 730 17th St.
Denver, CO 80202



BAYSWATER
EXPLORATION & PRODUCTION

Geologist

Name Mark E. Brown

Company Bayswater Exploration & Production, LLC.

Address 730 17th St.
Denver, CO 80202

Other

Robert Davis Senior Lead Wellsite Geologist

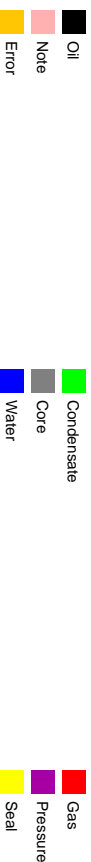
Andrew Martens Wellsite Geologist

Columbine Logging Computer 148

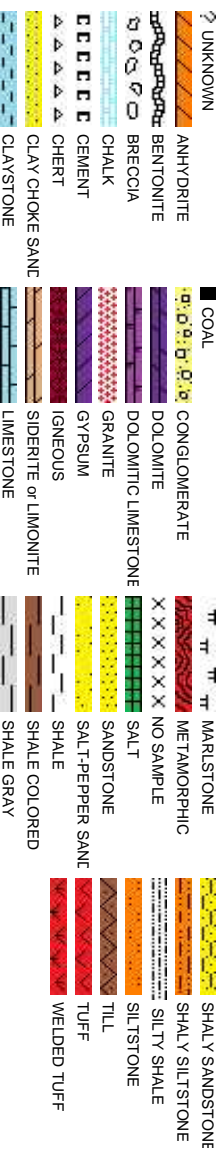
Bloodhound Unit 331

Tracy Lawson Wellsite Geologist

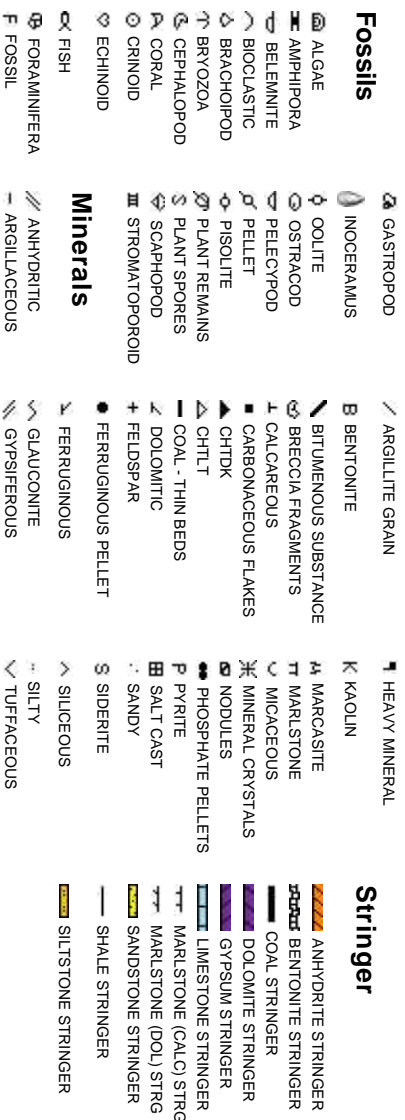
Zone Color Coding



Rock Types



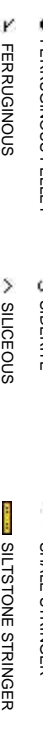
Accessories



Fossils



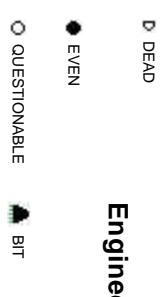
Minerals



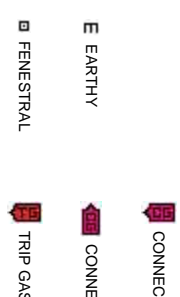
Oil Show



Engineering



Porosity



Interactions




Time Gas



Core - Recovered



Other Symbols

 DST INTERVAL  WIRELINE TESTED - LEFT **E** EARTHY

 FAULT  WIRELINE TESTED - RT **FX** FINELYXLN

 FORMATION TOP  DRILL STEM TEST **GS** GRAINSTONE

 GAS SHOW  MINDEPTH MN DEPTH **L** LITHOGRAPHIC

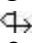
 OIL SHOW **MX** MICROXLN


 MINDEPTH UP **MJS** MUDSTONE

Rounding

 MN DEPTH (DOWN) **A** ANGULAR **PS** PACKSTONE

 NORMAL FAULT **R** ROUNDED **WIS** WACKSTONE

(LEFT)  OVERTURNED STRATA **B** SUBANG


 REVERSE FAULT **F** SUBRND

Sorting


 CASING **M** MODERATE

Textures

 SIDEWALL CORE (LEFT) **P** POOR

 SIDEWALL CORE (RIGHT) **BS** BOUNDSTONE **W** WELL

 SLIDE **C** CHALKY

 SURVEY **CX** CRYPTOXLN

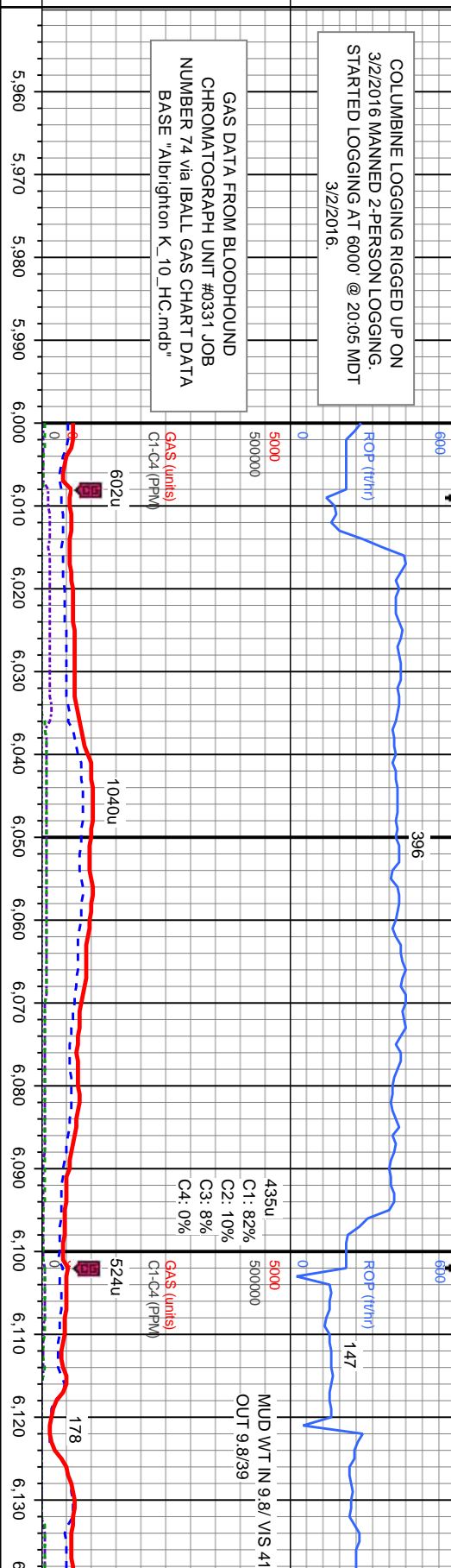
Slide/Rotate

ROP
ROP —

COLUMBINE LOGGING RIGGED UP ON
3/2/2016 MANNED 2-PERSON LOGGING.
STARTED LOGGING AT 6000' @ 20:05 MDT
3/2/2016.

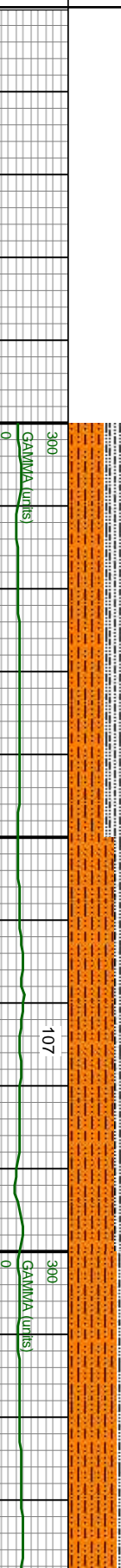
GAS DATA FROM BLOODHOUND
CHROMATOGRAPH UNIT #0331 JOB
NUMBER 74 via IBALL GAS CHART DATA
BASE "Abrington K_10_HC.mdb"

Total Gas & Chromatograph
GAS —
C1 - - -
C2 - - -
C3 - - -
C4 - - -



% Lith

Gamma
GAMMA —

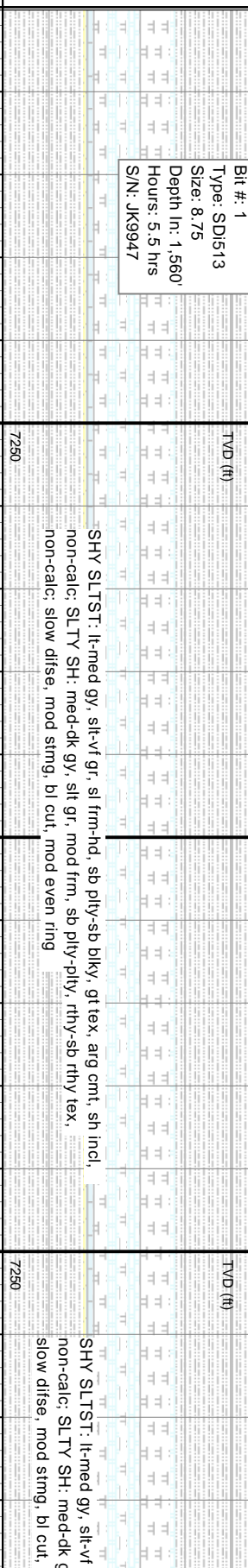


SURVEY, GAMMA, and ROP DATA
PROVIDED BY BAKER HUGHES

Bit Data
Bit #: 1
Type: SD1513
Size: 8.75
Depth In: 1,560'
Hours: 5.5 hrs
S/N: JK9947

MD: 6.054'
Inclination: 6.2°
Azimuth: 138.9°
TVD: 5,810.75'
VS: 3.23'

Well Bore
TVD —

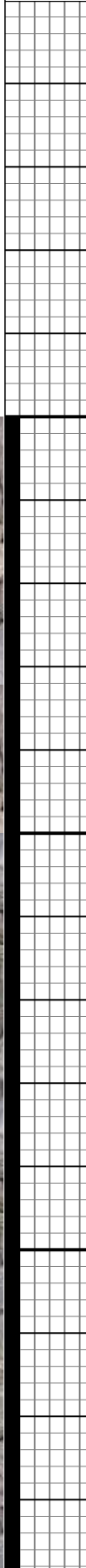


SHY SLTST: lk-med gy, silt-vf gr, sl frm-hd, sb plty-sb blkly, gr tex, arg cmt, sh incl,
non-calc; SLTY SH: med-dk gy, silt gr, mod frm, sb plty-plty, rthy-sb rthy tex,
non-calc; slow difse, mod stmg, bl cut, mod even ring

SHY SLTST: lk-med gy, silt-vf
non-calc; SLTY SH: med-dk g
slow difse, mod stmg, bl cut,

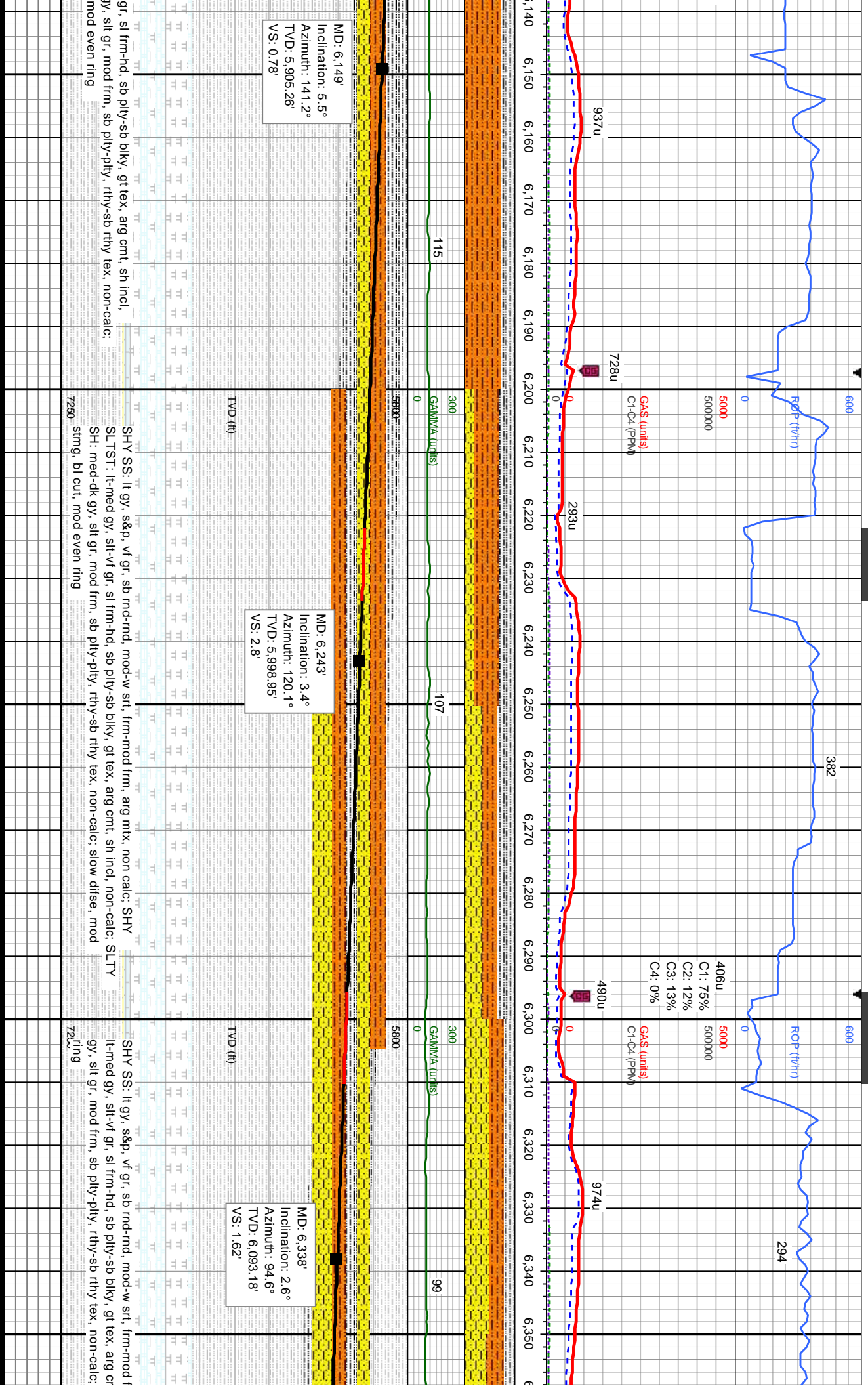
Oil Show

E
M
F
T
S



Images





MD: 6.149'
 Inclination: 5.5°
 Azimuth: 141.2°
 TVD: 5.905.26'
 VS: 0.78'

MD: 6.243'
 Inclination: 3.4°
 Azimuth: 120.1°
 TVD: 5.998.95'
 VS: 2.8'

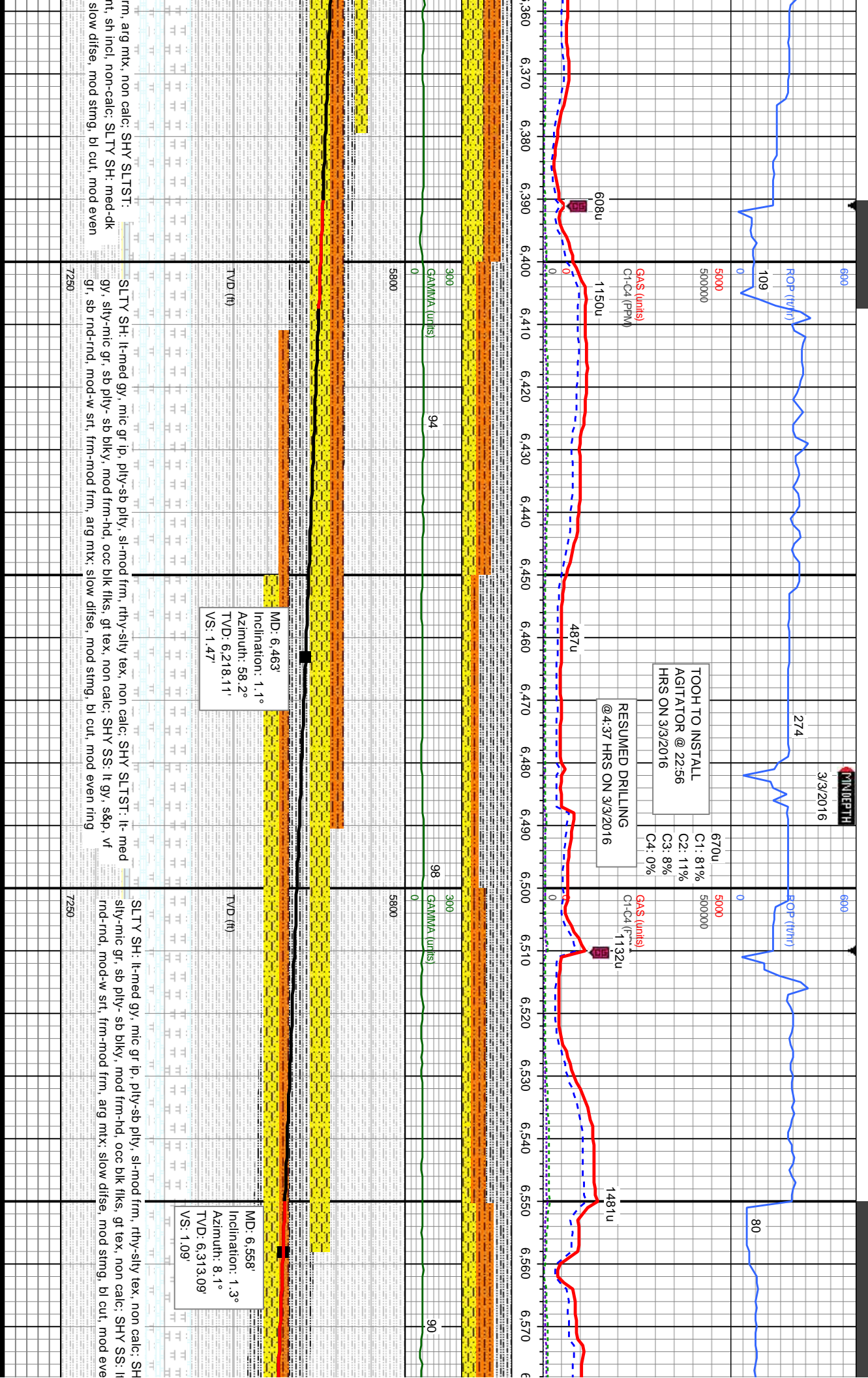
MD: 6.338'
 Inclination: 2.6°
 Azimuth: 94.6°
 TVD: 6.093.18'
 VS: 1.62'

gr, sl frm-hd, sb ply-sb blkly, gt tex, arg cnt, sh incl, gyl, slt gr, mod frm, sb ply-pty, rthy-sb rthy tex, non-calc, mod even ring

SHY SS: lt gy, s&p, vf gr, sb md-rnd, mod-w srt, frm-mod frm, arg mtx, non-calc: SHY
 SLTST: lt-med gy, slt-vf gr, sl frm-hd, sb ply-sb blkly, gt tex, arg cnt, sh incl, non-calc: SLTY
 SH: med-dk gy, slt gr, mod frm, sb ply-pty, rthy-sb rthy tex, non-calc: slow disse, mod stmg, bl cut, mod even ring

SHY SS: lt gy, s&p, vf gr, sb md-rnd, mod-w srt, frm-mod frm, arg cnt, sh incl, non-calc: SHY
 lt-med gy, slt-vf gr, sl frm-hd, sb ply-sb blkly, gt tex, arg cnt, sh incl, non-calc: SLTY
 gy, slt gr, mod frm, sb ply-pty, rthy-sb rthy tex, non-calc: mod even ring





TOOH TO INSTALL
AGITATOR @ 22:56
HRS ON 3/3/2016

670u
C1: 81%
C2: 11%
C3: 8%
C4: 0%

RESUMED DRILLING
@ 4:37 HRS ON 3/3/2016

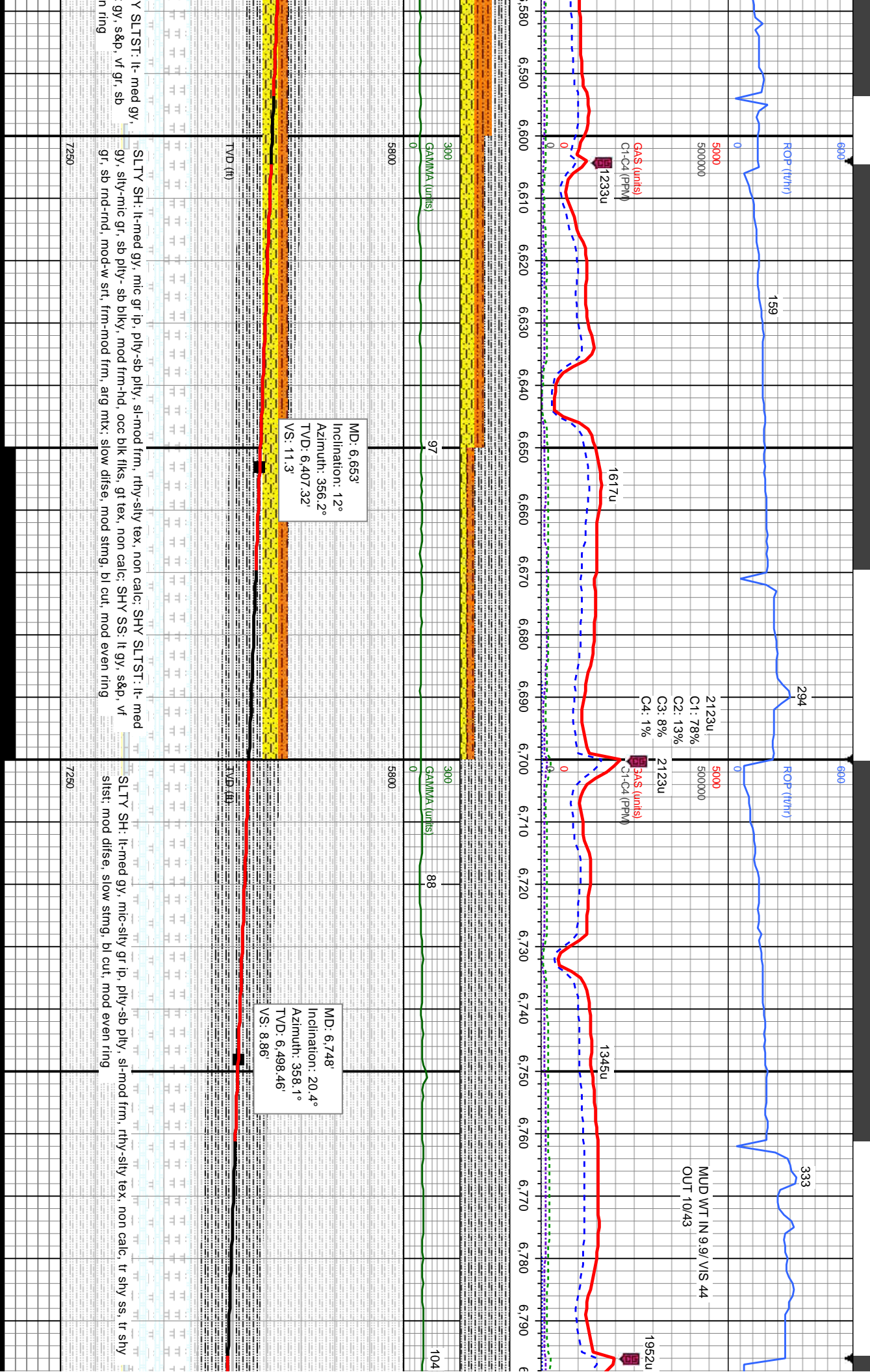
MD: 6,463'
Inclination: 1.1°
Azimuth: 58.2°
TVD: 6,218.11'
VS: 1.47'

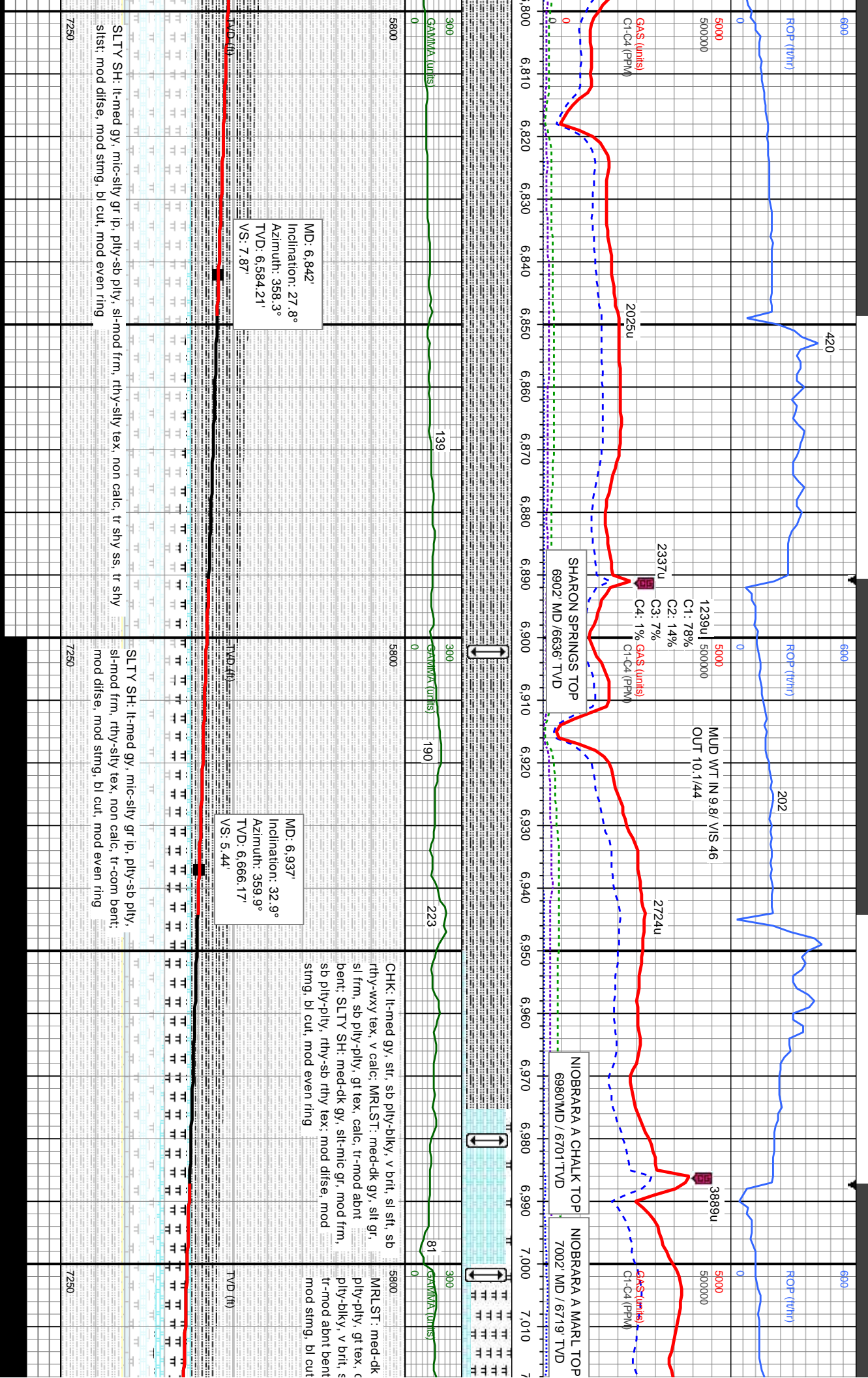
MD: 6,558'
Inclination: 1.3°
Azimuth: 8.1°
TVD: 6,313.09'
VS: 1.09'

frm, arg mtx, non calc; SHY SLTST:
frm, sh incl, non-calc; SLTY SH: med-dk
slow disse, mod stmg, bl cut, mod even

SLTY SH: lt-med gy, mic gr ip, ply-sb ply, sl-mod frm, rhy-sly tex, non calc; SHY SLTST: lt-med
gy, sly-mic gr, sb ply- sb blk, mod frm-hd, occ blk flks, gt tex, non calc; SHY SS: lt gy, s&p, vf
gr, sb rnd-rnd, mod-w srt, frm-mod frm, arg mtx; slow disse, mod stmg, bl cut, mod even ring

SLTY SH: lt-med gy, mic gr ip, ply-sb ply, sl-mod frm, rhy-sly tex, non calc; SH
sly-mic gr, sb ply- sb blk, mod frm-hd, occ blk flks, gt tex, non calc; SHY SS: lt
rnd-rnd, mod-w srt, frm-mod frm, arg mtx; slow disse, mod stmg, bl cut, mod even





6900

420

6900

6900

ROP (T/Hr)

ROP (T/Hr)

ROP (T/Hr)

5000

5000

5000

GAS (units)

GAS (units)

GAS (units)

CI-C4 (PPM)

CI-C4 (PPM)

CI-C4 (PPM)

2025u

2337u

1239u

5000000

MUD WT IN 9.8' VIS 46

OUT 10.1/44

202

2724u

3889u

SHARON SPRINGS TOP
6902 MD / 6636' TVD

NIORARA A CHALK TOP
6980 MD / 6701' TVD

NIORARA A MARL TOP
7002 MD / 6719' TVD

MD: 6.842'
Inclination: 27.8°
Azimuth: 358.3°
TVD: 6,584.21'
VS: 7.87'

MD: 6.937'
Inclination: 32.9°
Azimuth: 359.9°
TVD: 6,666.17'
VS: 5.44'

CHK: lt-med gy, str, sb pily-blky, v brit, sl sft, sb rthy-wxy tex, v calc; MRLST: med-dk gy, slt gr, sl frm, sb pily-pily, gt tex, calc, tr-mod abnt bent; SLTY SH: med-dk gy, slt-mic gr, mod frm, sb pily-pily, rthy-sb rthy tex; mod disse, mod string, bl cut, mod even ring

MRLST: med-dk pily-pily, gt tex, calc, tr-mod abnt bent; SLTY SH: med-dk gy, slt-mic gr, mod frm, sb pily-pily, rthy-sb rthy tex; mod disse, mod string, bl cut

SLTY SH: lt-med gy, mic-silty gr ip, pily-sb pily, sl-mod frm, rthy-silty tex, non calc, tr shy ss, tr shy sltst; mod disse, mod string, bl cut, mod even ring

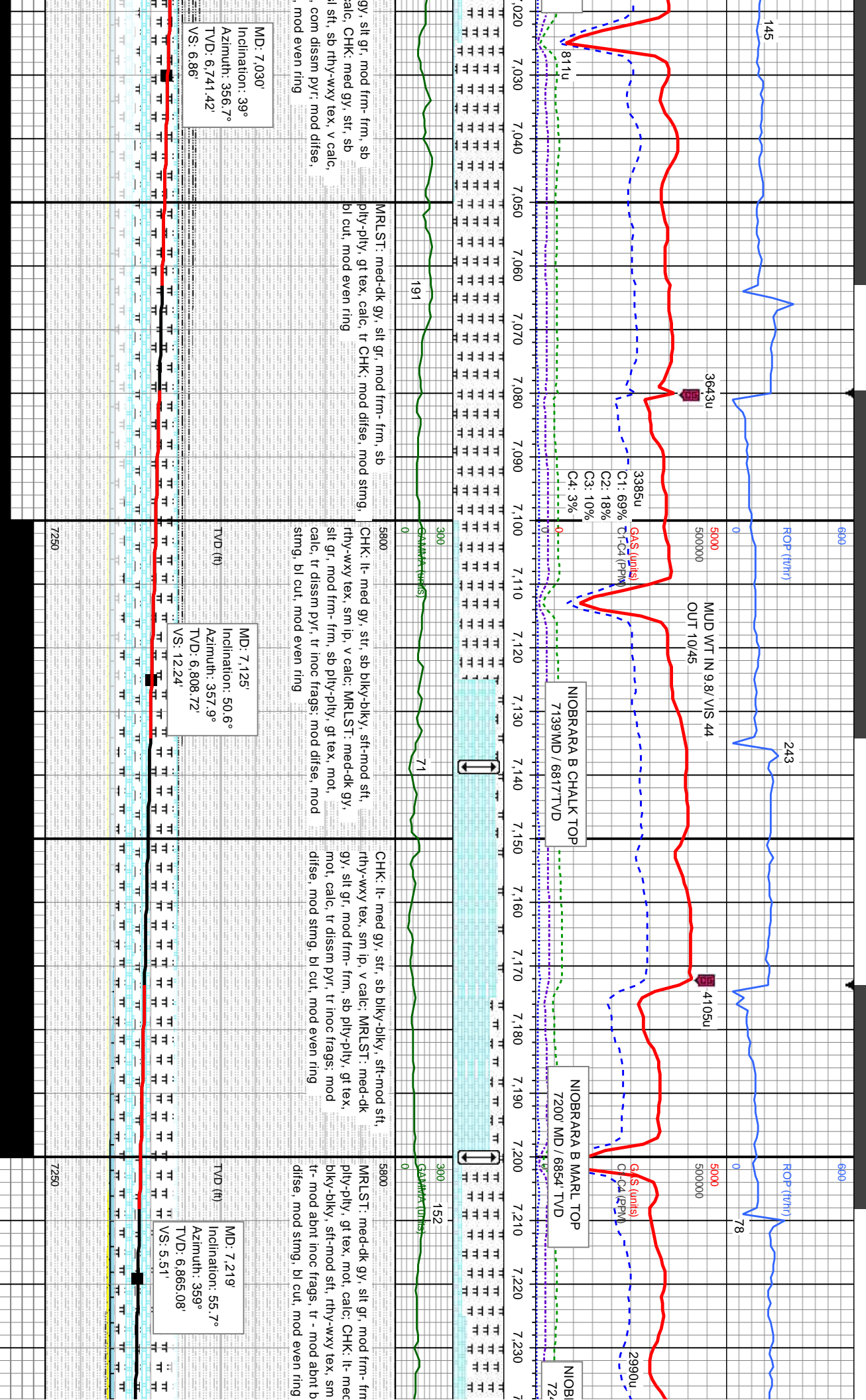
SLTY SH: lt-med gy, mic-silty gr ip, pily-sb pily, sl-mod frm, rthy-silty tex, non calc, tr-com bent; mod disse, mod string, bl cut, mod even ring

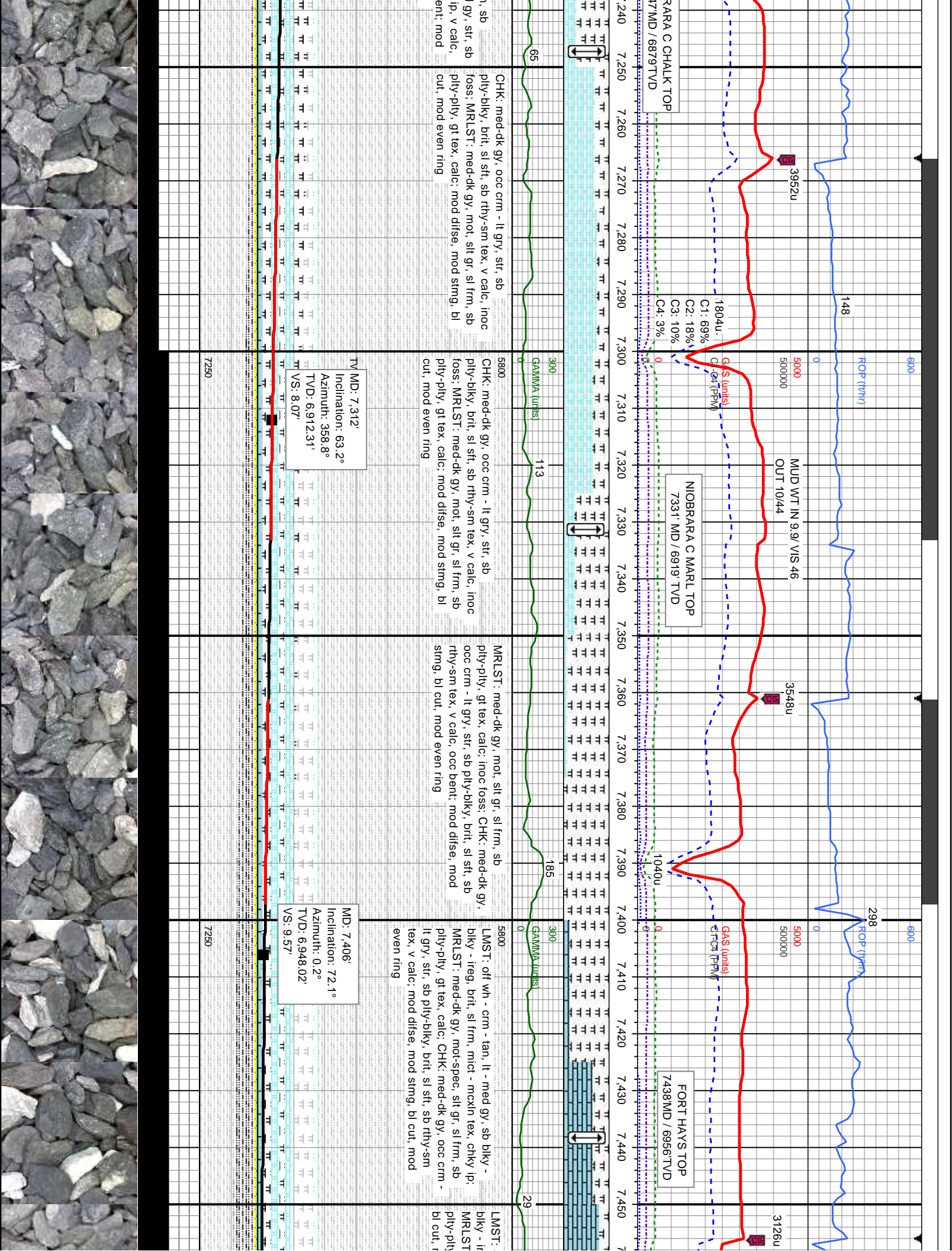
7250

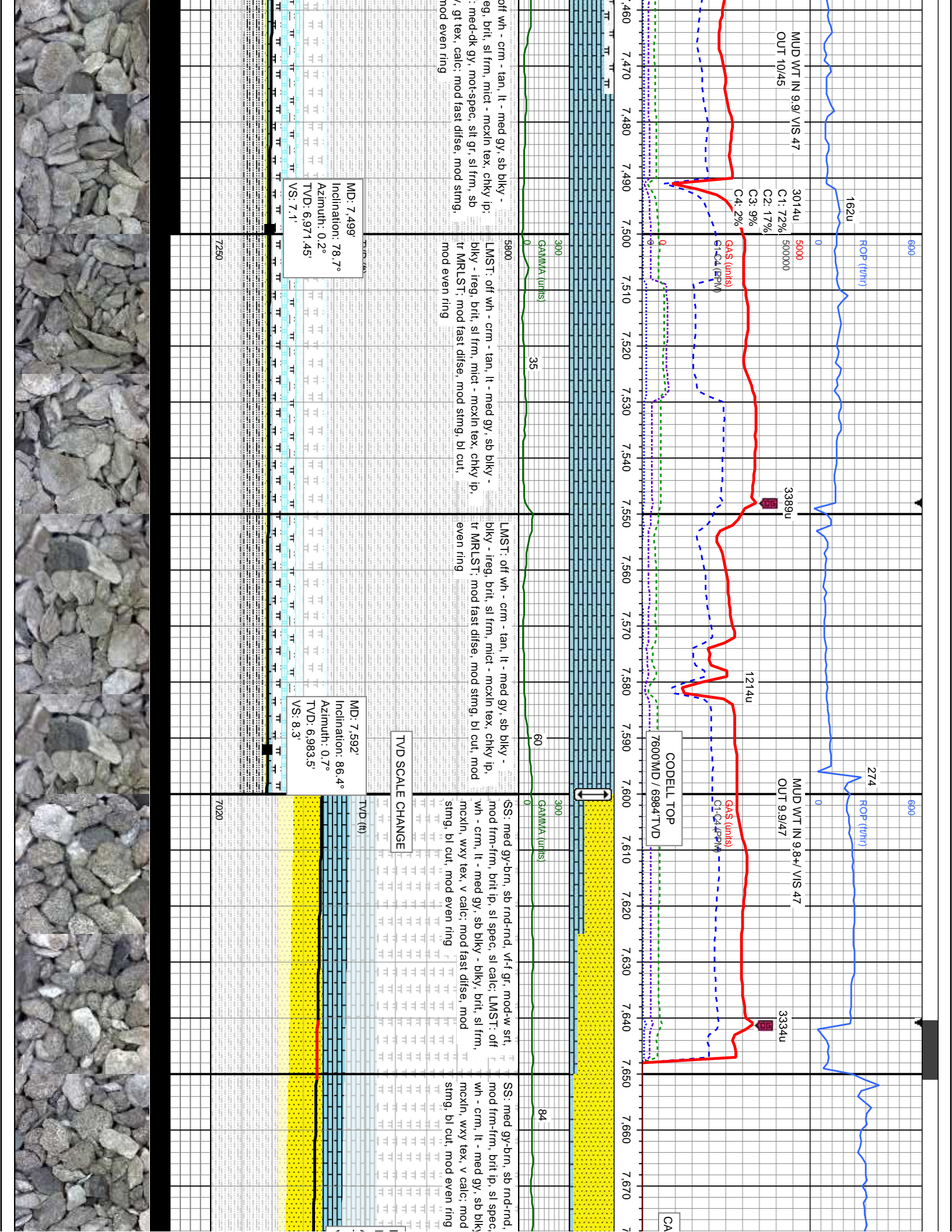
7250

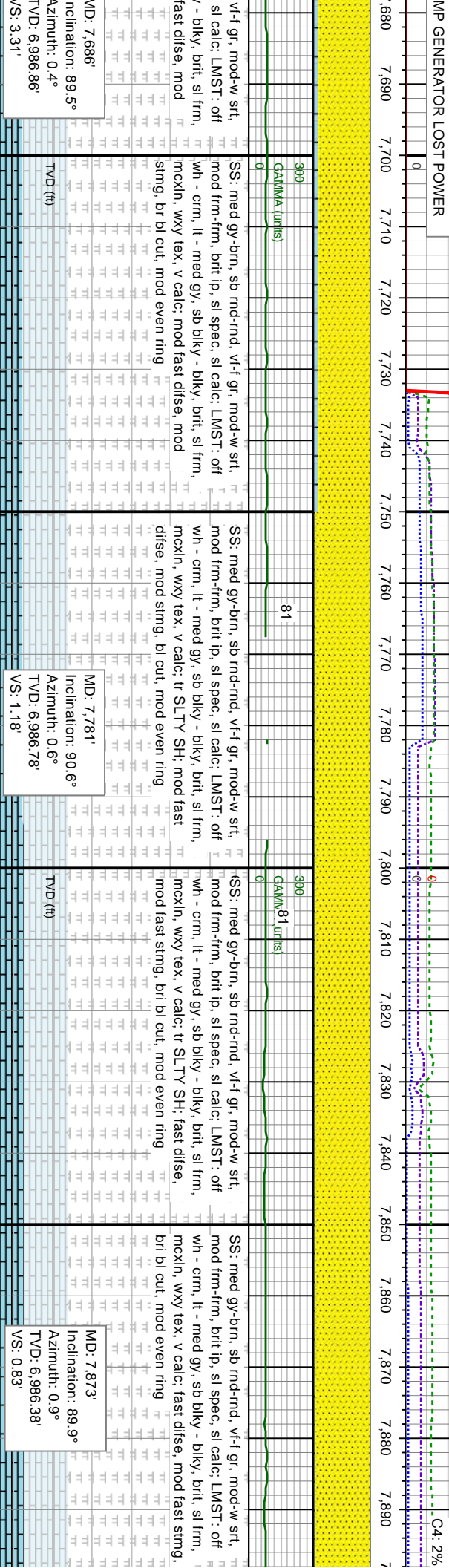
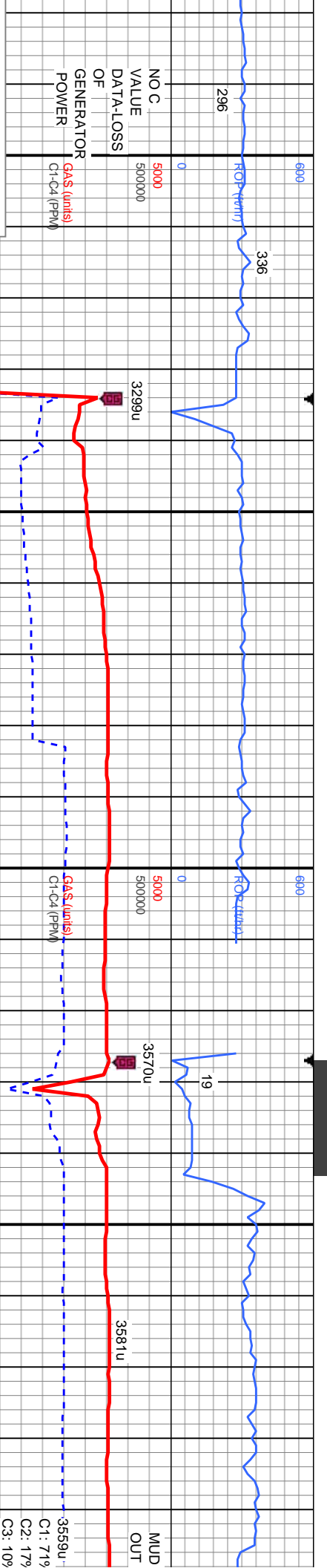
7250





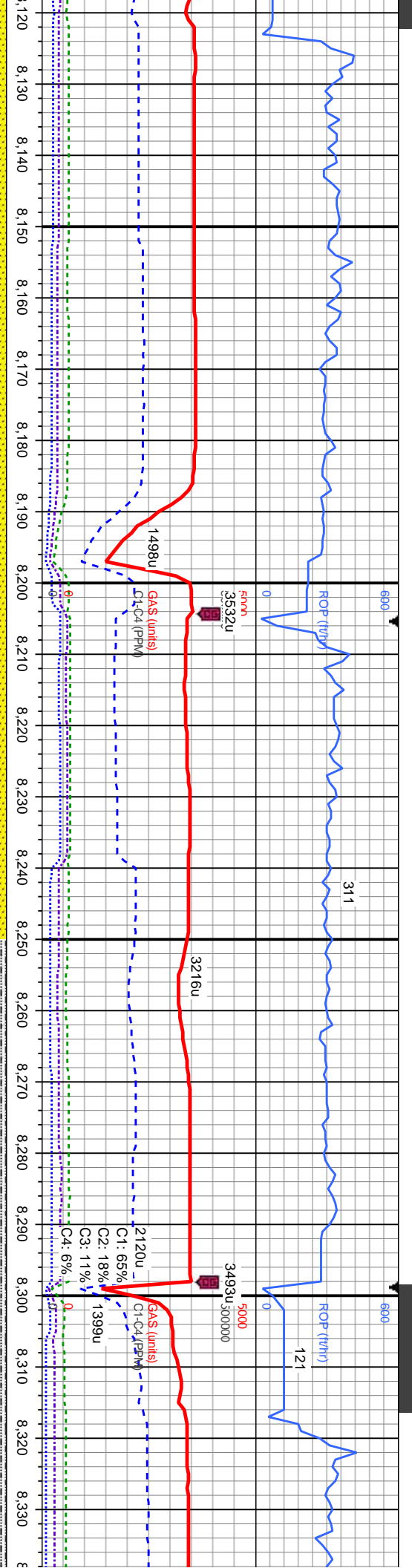






MD: 7.686° Inclination: 89.5° Azimuth: 0.4° TVD: 6.986.86° VS: 3.31'	TVD (ft)	SS: med gy-brn, sb nd-nd, vf-f gr, mod-w srt, mod frm-frm, brit ip, sl spec, sl calc; LMST: off wh - crm, lt - med gy, sb blkv - blkv, brit, sl frm, mckln, wxy tex, v calc; mod fast difse, mod string, br bl cut; mod even ring	MD: 7.781° Inclination: 90.6° Azimuth: 0.6° TVD: 6.986.78° VS: 1.18'	TVD (ft)	SS: med gy-brn, sb nd-nd, vf-f gr, mod-w srt, mod frm-frm, brit ip, sl spec, sl calc; LMST: off wh - crm, lt - med gy, sb blkv - blkv, brit, sl frm, mckln, wxy tex, v calc; tr SLTY SH; mod fast difse, mod string, br bl cut; mod even ring	MD: 7.873° Inclination: 89.9° Azimuth: 0.9° TVD: 6.986.38° VS: 0.83'	TVD (ft)	SS: med gy-brn, sb nd-nd, vf-f gr, mod-w srt, mod frm-frm, brit ip, sl spec, sl calc; LMST: off wh - crm, lt - med gy, sb blkv - blkv, brit, sl frm, mckln, wxy tex, v calc; fast difse, mod fast string, br bl cut; mod even ring
--	----------	---	--	----------	---	--	----------	--





103 SS: lt gy-brn, occ clr, sb md-rnd, vf-f gr, mod-w
 srt, mod frm-frm, brit ip, sl spec, sl calc; fast
 difse, mod fast stng, bri bl cut, mod even ring

6SS: lt gy-brn, occ clr, sb md-rnd, vf-f gr, mod-w
 srt, mod frm-frm, brit ip, sl spec, sl calc; tr
 SLTY SH: fast difse, mod fast stng, bri bl cut,
 mod even ring

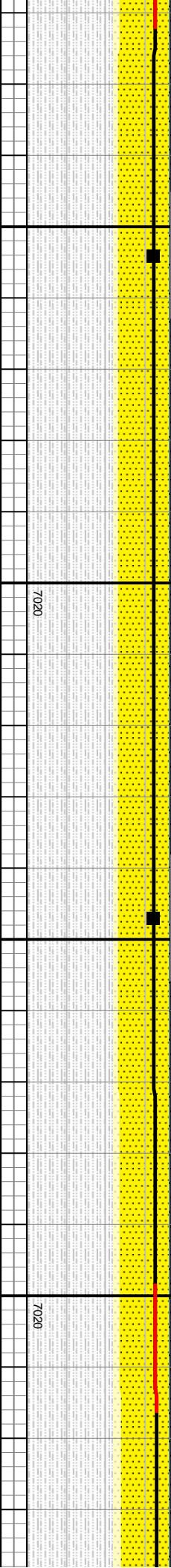
110 SS: lt gy-brn, occ wh, sb md-rnd, vf-f gr,
 mod-w srt, mod frm-frm, brit ip, sl spec, sl
 calc; SLTY SH: med gy - gy: occ dk gy, silty
 gr, ply-sb ply, frm - mod hd, rthy tex, non
 calc; fast difse, mod fast stng, bri bl cut,
 mod even ring

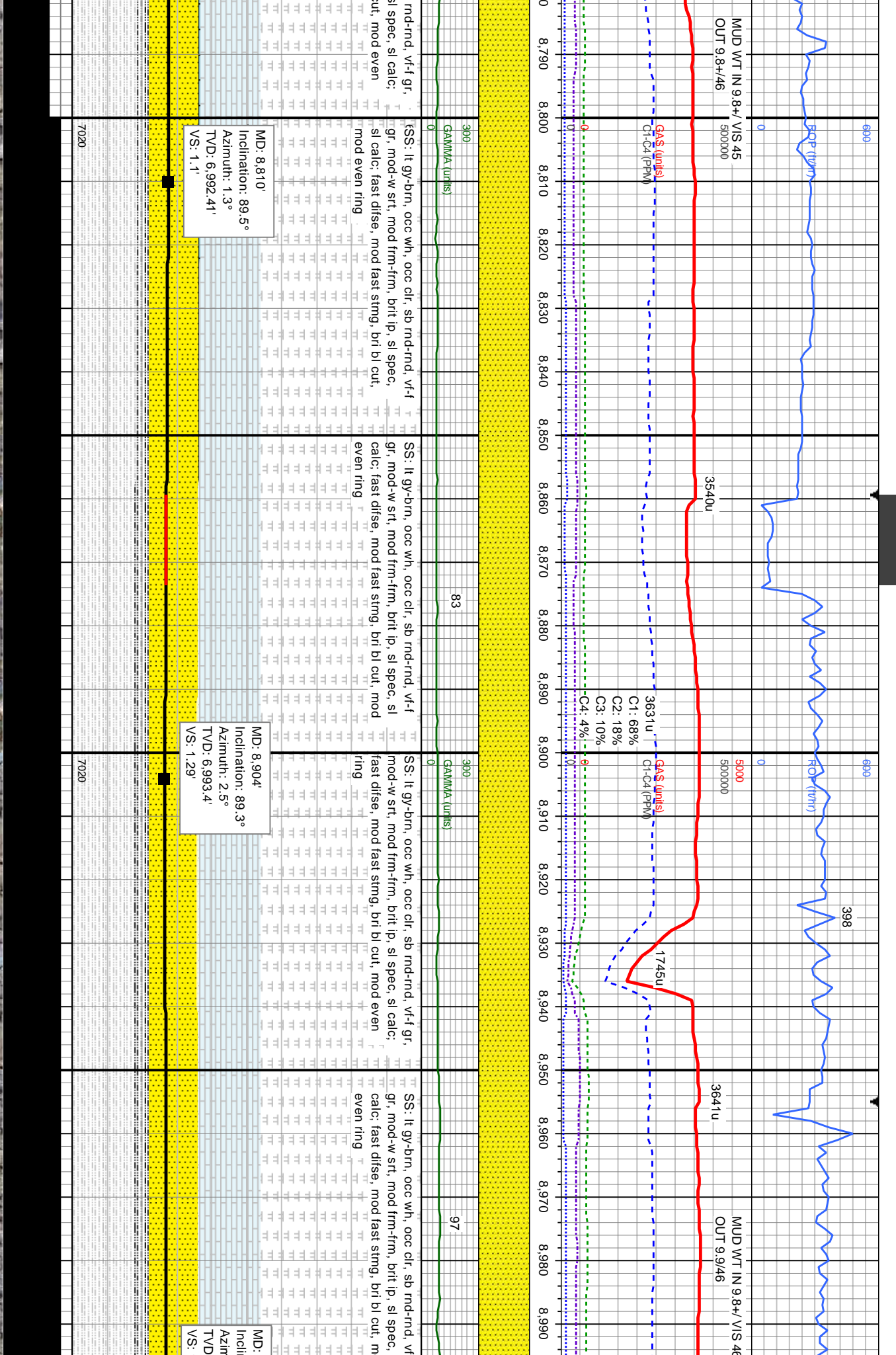
107 6SS: lt gy-brn, occ wh, sb md-rnd, vf-f gr,
 srt, mod frm-frm, brit ip, sl spec, sl cal
 SH: med gy - gy: occ dk gy, silty gr, ply
 frm - mod hd, rthy tex, non calc; fast d
 fast stng, bri bl cut, mod even ring

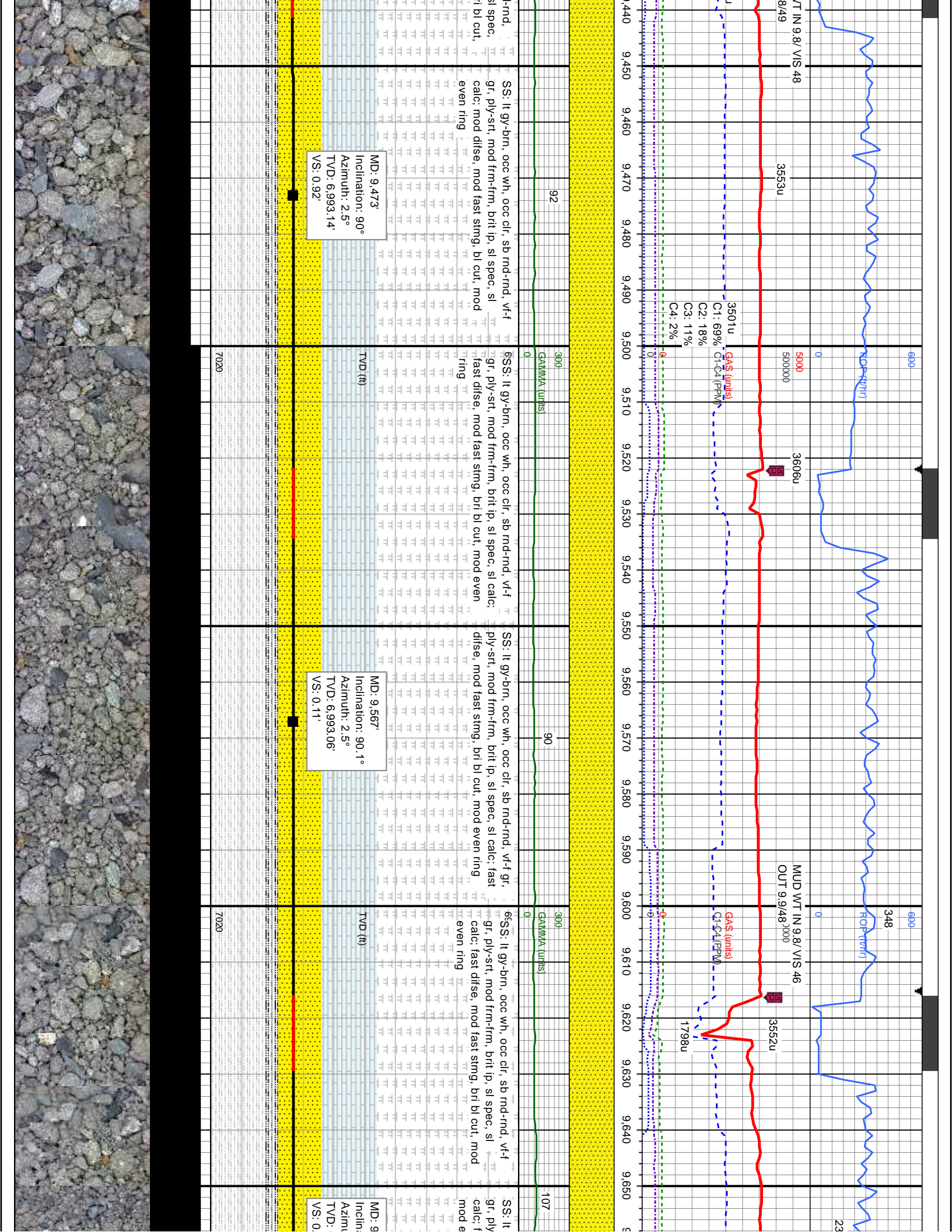
MD: 8.154'
 Inclination: 89.2°
 Azimuth: 0.4°
 TVD: 6,987.75'
 VS: 0.88'

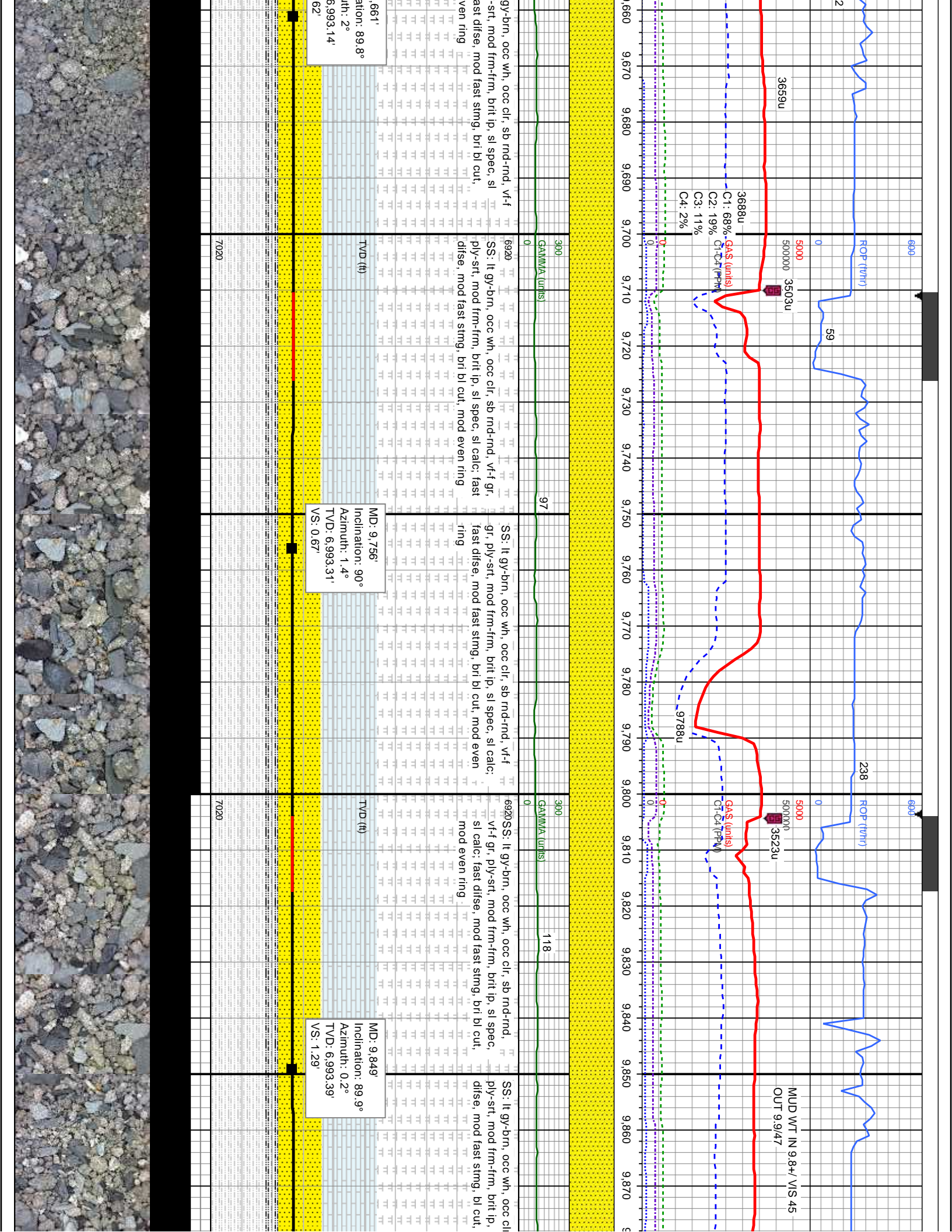
MD: 8.247'
 Inclination: 90.9°
 Azimuth: 359.5°
 TVD: 6,987.67'
 VS: 2.07'

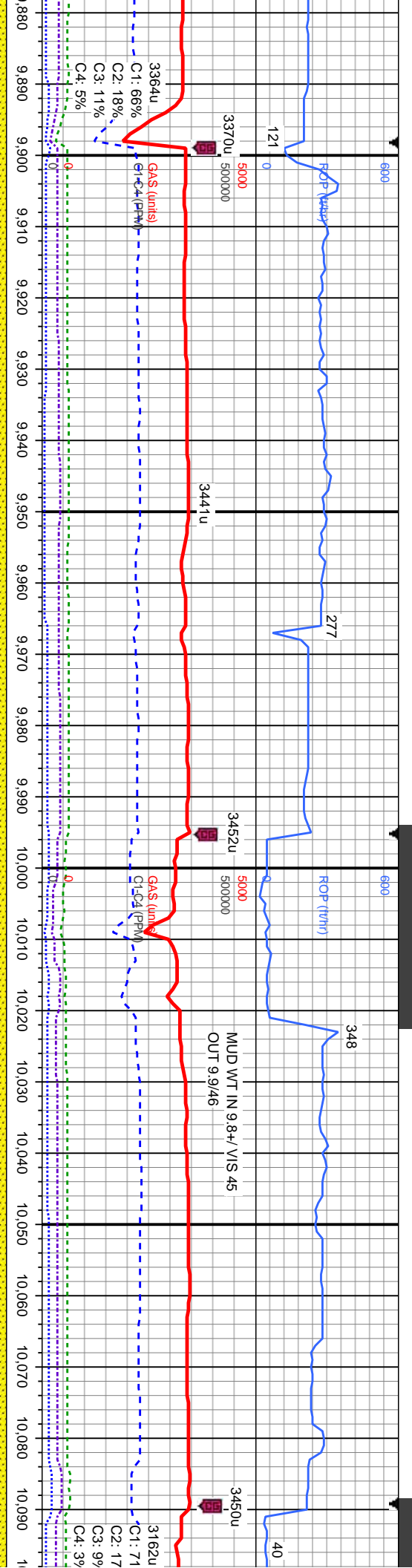
MD: 8
 Incln:
 Azim:
 TVD:
 VS: 1







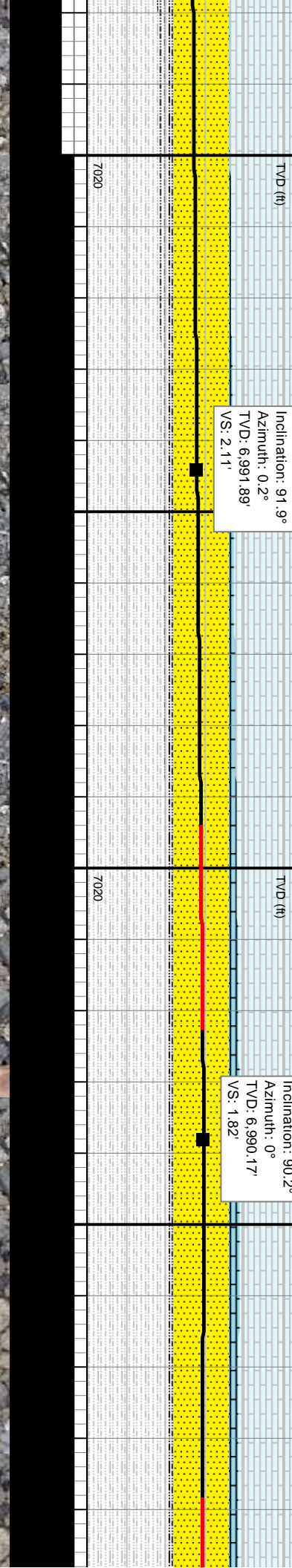


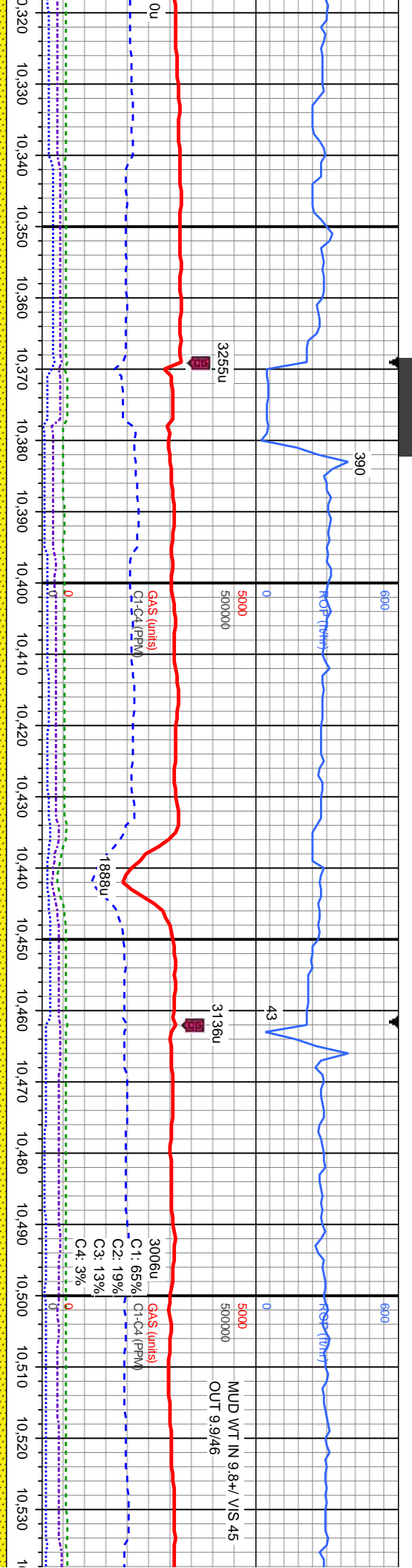


Depth (ft)	Gamma (units)	SS: It gy-brn, occ wh, occ clr, sb rnd-rnd, vf-f gr, ply-srt, mod frm-frm, brit lp, sl spec, sl calc; fast disse, mod fast stmg, bri bl cut, mod even ring
94	300	SS: It gy-brn, occ wh, occ clr, sb rnd-rnd, vf-f gr, ply-srt, mod frm-frm, brit lp, sl spec, sl calc; fast disse, mod fast stmg, bri bl cut, mod even ring
90	300	SS: It gy-brn, occ wh, occ clr, sb rnd-rnd, vf-f gr, ply-srt, mod frm-frm, brit lp, sl spec, sl calc; fast disse, mod fast stmg, bri bl cut, mod even ring
76	300	SS: It gy-brn, occ wh, occ clr, sb rnd-rnd, vf-f gr, ply-srt, mod frm-frm, brit lp, sl spec, sl calc; fast disse, mod fast stmg, bri bl cut, mod even ring
85	300	SS: It gy-brn, occ wh, occ clr, sb rnd-rnd, vf-f gr, ply-srt, mod frm-frm, brit lp, sl spec, sl calc; fast disse, mod fast stmg, bri bl cut, mod even ring

MD: 9.944'
 Inclination: 91.9°
 Azimuth: 0.2°
 TVD: 6.991.89'
 VS: 2.11'

MD: 10.038'
 Inclination: 90.2°
 Azimuth: 0°
 TVD: 6.990.17'
 VS: 1.82'





ion: 89.7°
h: 1.6°
990.59'

SS: lt gy-brn, occ wh, occ clr, sb rnd-rnd, vf-f, ply-srt, mod frm-frn, brit lp, sl spec, sl calc; mod disse, mod fast stmg, bri bl cut, mod even ring

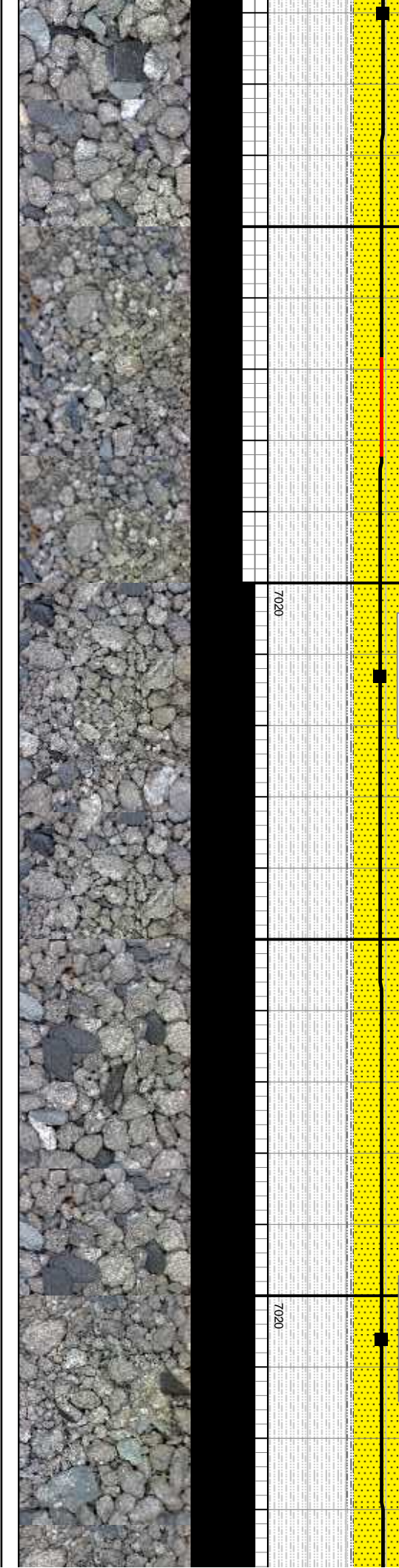
SS: lt gy-brn, occ wh, occ clr, sb rnd-rnd, vf-f gr, ply-srt, mod frm-frn, brit lp, sl spec, sl calc; mod disse, mod fast stmg, bri bl cut, mod even ring

SS: lt gy-brn, occ wh, occ clr, sb rnd-rnd, vf-f gr, ply-srt, mod frm-frn, brit lp, sl spec, sl calc; fast disse, mod fast stmg, bri bl cut, mod even ring

SS: lt gy-brn, occ wh, occ clr, sb rnd-rnd, vf-f gr, ply-srt, mod frm-frn, brit lp, sl spec, sl calc; fast disse, mod fast stmg, bri bl cut, mod even ring

MD: 10.413'
Inclination: 89.4°
Azimuth: 2.7°
TVD: 6.991.32'
VS: 1.23'

MD: 10.506'
Inclination: 91.2°
Azimuth: 2.5°
TVD: 6.990.83'
VS: 1.95'





SS: lt gy-brn, occ wh, occ clr, sb md-rnd, v-f gr, ply-srt, mod frm-frm, brit lp, sl spec, sl calc; fast difse, mod fast stmg, bri bl cut, mod even ring

SS: lt gy-brn, occ wh, occ clr, sb md-rnd, v-f gr, ply-srt, mod frm-frm, brit lp, sl spec, sl calc; fast difse, mod fast stmg, bri bl cut, mod even ring

SS: lt gy-brn, occ wh, occ clr, sb md-rnd, v-f gr, mod difse, mod fast stmg, bri bl cut, mod even ring

SS: lt gy-brn, occ wh, occ clr, sb md-rnd, v-f gr, ply-srt, mod frm-frm, brit lp, sl spec, sl calc; fast difse, mod fast stmg, bri bl cut, mod even ring

SS: lt gy-brn, occ wh, occ clr, sb md-rnd, v-f gr, mod difse, mod fast stmg, bri bl cut, mod even ring

SS: lt gy-brn, occ wh, occ clr, sb md-rnd, v-f gr, ply-srt, mod frm-frm, brit lp, sl spec, sl calc; fast difse, mod fast stmg, bri bl cut, mod even ring

SS: lt gy-brn, occ wh, occ clr, sb md-rnd, v-f gr, mod difse, mod fast stmg, bri bl cut, mod even ring

SS: lt gy-brn, occ wh, occ clr, sb md-rnd, v-f gr, ply-srt, mod frm-frm, brit lp, sl spec, sl calc; fast difse, mod fast stmg, bri bl cut, mod even ring

SS: lt gy-brn, occ wh, occ clr, sb md-rnd, v-f gr, mod difse, mod fast stmg, bri bl cut, mod even ring

SS: lt gy-brn, occ wh, occ clr, sb md-rnd, v-f gr, ply-srt, mod frm-frm, brit lp, sl spec, sl calc; fast difse, mod fast stmg, bri bl cut, mod even ring

SS: lt gy-brn, occ wh, occ clr, sb md-rnd, v-f gr, mod difse, mod fast stmg, bri bl cut, mod even ring

SS: lt gy-brn, occ wh, occ clr, sb md-rnd, v-f gr, ply-srt, mod frm-frm, brit lp, sl spec, sl calc; fast difse, mod fast stmg, bri bl cut, mod even ring

SS: lt gy-brn, occ wh, occ clr, sb md-rnd, v-f gr, mod difse, mod fast stmg, bri bl cut, mod even ring

SS: lt gy-brn, occ wh, occ clr, sb md-rnd, v-f gr, ply-srt, mod frm-frm, brit lp, sl spec, sl calc; fast difse, mod fast stmg, bri bl cut, mod even ring

SS: lt gy-brn, occ wh, occ clr, sb md-rnd, v-f gr, mod difse, mod fast stmg, bri bl cut, mod even ring

SS: lt gy-brn, occ wh, occ clr, sb md-rnd, v-f gr, ply-srt, mod frm-frm, brit lp, sl spec, sl calc; fast difse, mod fast stmg, bri bl cut, mod even ring

SS: lt gy-brn, occ wh, occ clr, sb md-rnd, v-f gr, mod difse, mod fast stmg, bri bl cut, mod even ring

SS: lt gy-brn, occ wh, occ clr, sb md-rnd, v-f gr, ply-srt, mod frm-frm, brit lp, sl spec, sl calc; fast difse, mod fast stmg, bri bl cut, mod even ring

SS: lt gy-brn, occ wh, occ clr, sb md-rnd, v-f gr, mod difse, mod fast stmg, bri bl cut, mod even ring

SS: lt gy-brn, occ wh, occ clr, sb md-rnd, v-f gr, ply-srt, mod frm-frm, brit lp, sl spec, sl calc; fast difse, mod fast stmg, bri bl cut, mod even ring

SS: lt gy-brn, occ wh, occ clr, sb md-rnd, v-f gr, mod difse, mod fast stmg, bri bl cut, mod even ring

SS: lt gy-brn, occ wh, occ clr, sb md-rnd, v-f gr, ply-srt, mod frm-frm, brit lp, sl spec, sl calc; fast difse, mod fast stmg, bri bl cut, mod even ring

SS: lt gy-brn, occ wh, occ clr, sb md-rnd, v-f gr, mod difse, mod fast stmg, bri bl cut, mod even ring

SS: lt gy-brn, occ wh, occ clr, sb md-rnd, v-f gr, ply-srt, mod frm-frm, brit lp, sl spec, sl calc; fast difse, mod fast stmg, bri bl cut, mod even ring

SS: lt gy-brn, occ wh, occ clr, sb md-rnd, v-f gr, mod difse, mod fast stmg, bri bl cut, mod even ring

SS: lt gy-brn, occ wh, occ clr, sb md-rnd, v-f gr, ply-srt, mod frm-frm, brit lp, sl spec, sl calc; fast difse, mod fast stmg, bri bl cut, mod even ring

MD: 10.589'
Inclination: 89.3°
Azimuth: 2.3°
TVD: 6,990.43'
VS: 2.05'

MD: 10.693'
Inclination: 91.1°
Azimuth: 2.7°
TVD: 6,990.1'
VS: 1.96'

VD (ft)

ROP (ft/hr)

MUD WT IN 9.8 / VIS 47
OUT 9.9/48

GAS (units)
C1: 67%
C2: 19%
C3: 13%
C4: 1%

GAMMA (units)

3169u

237

3164u

177

3270u

3369u

103

95

94

7020

7020

7020

7020

7020

7020

7020

7020

7020

7020

7020

7020

7020

7020

7020

7020

7020

7020

7020

7020

7020

7020

7020

7020

7020

7020

7020

7020

7020

7020

7020

7020

7020

7020

7020

7020

7020

7020

7020

7020

7020

7020

7020

7020

7020

7020

7020

7020

7020

7020

7020

7020

7020

7020

7020

7020

7020

7020

7020

7020

7020

7020

7020

7020

7020

7020

7020

7020

7020

7020

7020

7020

7020

7020

7020

7020

7020

7020

7020

7020

7020

7020

7020

7020

7020

7020

7020

7020

7020

7020

7020

7020

7020

7020

7020

7020

7020

7020

7020

7020

7020

7020

7020

7020

7020

7020

7020

7020

7020

7020

7020

7020

7020

7020

7020

7020

7020

7020

7020

7020

7020

7020

7020

7020

7020

7020

7020

7020

7020

7020

7020

7020

7020

7020

7020

7020

7020

7020

7020

7020

7020

7020

7020

7020

7020

7020

7020

7020

7020

7020

7020

7020

7020

7020

7020

7020

7020

7020

7020

7020

7020

7020

7020

7020

7020

7020

7020

7020

7020

7020

7020

7020

7020

7020

7020

7020

7020

7020

7020

7020

7020

7020

7020

7020

7020

7020

7020

7020

7020

7020

7020

7020

7020

7020

7020

7020

7020

7020

7020

7020

7020

7020

7020

7020

7020

7020

7020

7020

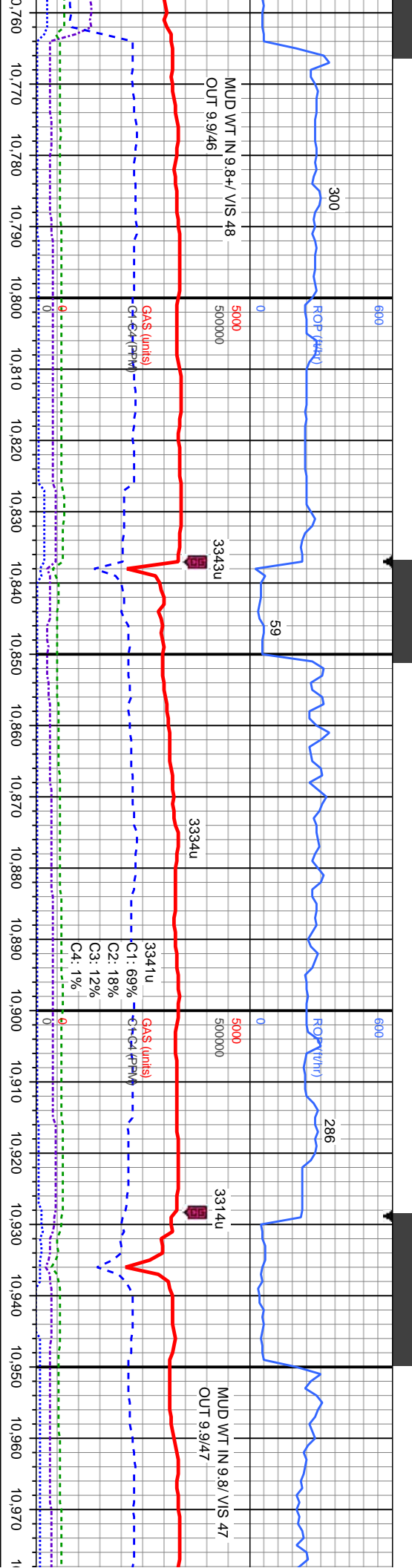
7020

7020

7020

7020

7020



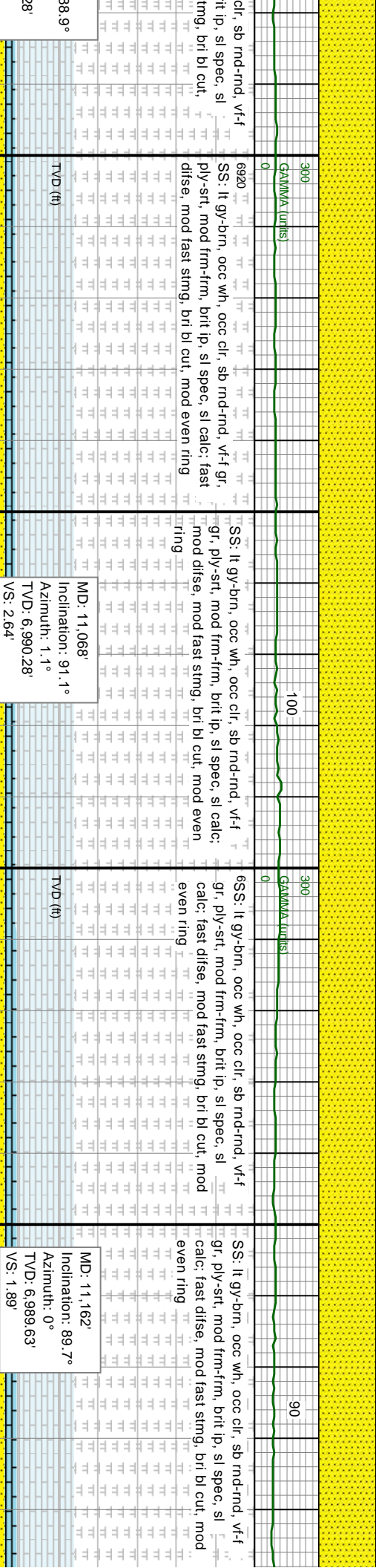
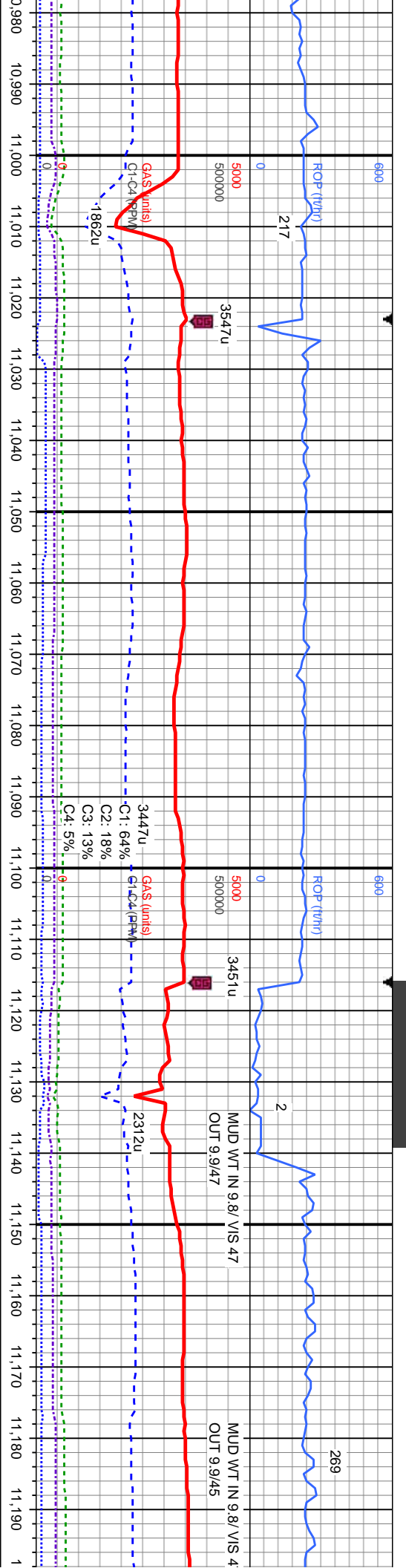
MD: 10,786'
 Inclination: 90.2°
 Azimuth: 1.4°
 TVD: 6,989.04'
 VS: 1.7'

MD: 10,880'
 Inclination: 89.7°
 Azimuth: 1.4°
 TVD: 6,989.12'
 VS: 0.53'

MD: 10,975'
 Inclination: 0°
 Azimuth: 0°
 TVD: 6,990.0'
 VS: 1.7'

Depth (ft)	Formation	Notes
10,760 - 10,780	SS: It gy-brn, occ wh, occ clr, sb rnd-rnd, vf-f gr, mod frm-frm, brit lp, sl spec, sl calc; fast ply-st, mod frm-frm, brit lp, sl spec, sl calc; fast difse, mod fast stmg, bri bl cut, mod even ring	
10,780 - 10,800	SS: It gy-brn, occ wh, occ clr, sb rnd-rnd, vf-f gr, mod frm-frm, brit lp, sl spec, sl calc; fast ply-st, mod frm-frm, brit lp, sl spec, sl calc; fast difse, mod fast stmg, bri bl cut, mod even ring	
10,800 - 10,820	SS: It gy-brn, occ wh, occ clr, sb rnd-rnd, vf-f gr, mod frm-frm, brit lp, sl spec, sl calc; fast ply-st, mod frm-frm, brit lp, sl spec, sl calc; fast difse, mod fast stmg, bri bl cut, mod even ring	
10,820 - 10,840	SS: It gy-brn, occ wh, occ clr, sb rnd-rnd, vf-f gr, mod frm-frm, brit lp, sl spec, sl calc; fast ply-st, mod frm-frm, brit lp, sl spec, sl calc; fast difse, mod fast stmg, bri bl cut, mod even ring	
10,840 - 10,860	SS: It gy-brn, occ wh, occ clr, sb rnd-rnd, vf-f gr, mod frm-frm, brit lp, sl spec, sl calc; fast ply-st, mod frm-frm, brit lp, sl spec, sl calc; fast difse, mod fast stmg, bri bl cut, mod even ring	
10,860 - 10,880	SS: It gy-brn, occ wh, occ clr, sb rnd-rnd, vf-f gr, mod frm-frm, brit lp, sl spec, sl calc; fast ply-st, mod frm-frm, brit lp, sl spec, sl calc; fast difse, mod fast stmg, bri bl cut, mod even ring	
10,880 - 10,900	SS: It gy-brn, occ wh, occ clr, sb rnd-rnd, vf-f gr, mod frm-frm, brit lp, sl spec, sl calc; fast ply-st, mod frm-frm, brit lp, sl spec, sl calc; fast difse, mod fast stmg, bri bl cut, mod even ring	
10,900 - 10,920	SS: It gy-brn, occ wh, occ clr, sb rnd-rnd, vf-f gr, mod frm-frm, brit lp, sl spec, sl calc; fast ply-st, mod frm-frm, brit lp, sl spec, sl calc; fast difse, mod fast stmg, bri bl cut, mod even ring	
10,920 - 10,940	SS: It gy-brn, occ wh, occ clr, sb rnd-rnd, vf-f gr, mod frm-frm, brit lp, sl spec, sl calc; fast ply-st, mod frm-frm, brit lp, sl spec, sl calc; fast difse, mod fast stmg, bri bl cut, mod even ring	
10,940 - 10,960	SS: It gy-brn, occ wh, occ clr, sb rnd-rnd, vf-f gr, mod frm-frm, brit lp, sl spec, sl calc; fast ply-st, mod frm-frm, brit lp, sl spec, sl calc; fast difse, mod fast stmg, bri bl cut, mod even ring	
10,960 - 10,970	SS: It gy-brn, occ wh, occ clr, sb rnd-rnd, vf-f gr, mod frm-frm, brit lp, sl spec, sl calc; fast ply-st, mod frm-frm, brit lp, sl spec, sl calc; fast difse, mod fast stmg, bri bl cut, mod even ring	





Depth (ft)	Gamma (API)	MD (ft)
6920	300	11.068'
11000	100	11.162'
11020	300	
11040	300	
11060	300	
11080	300	
11100	300	
11120	300	
11140	300	
11160	300	
11180	300	
11200	300	
11220	300	
11240	300	
11260	300	
11280	300	
11300	300	
11320	300	
11340	300	
11360	300	
11380	300	
11400	300	
11420	300	
11440	300	
11460	300	
11480	300	
11500	300	
11520	300	
11540	300	
11560	300	
11580	300	
11600	300	
11620	300	
11640	300	
11660	300	
11680	300	
11700	300	
11720	300	
11740	300	
11760	300	
11780	300	
11800	300	
11820	300	
11840	300	
11860	300	
11880	300	
11900	300	



MD: 11.068'
 Inclination: 91.1°
 Azimuth: 1.1°
 TVD: 6.990.28'
 VS: 2.64'

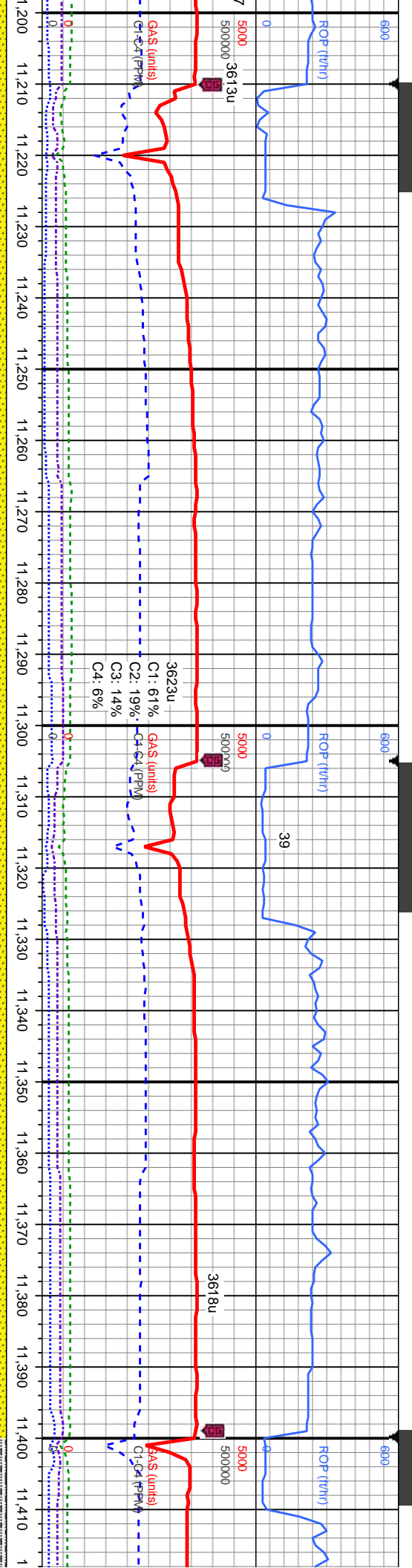
MD: 11.162'
 Inclination: 89.7°
 Azimuth: 0°
 TVD: 6.989.63'
 VS: 1.89'

SS: lt gy-brn, occ wh, occ clr, sb rnd-rnd, vf-f
 gr, ply-srt, mod frm-frm, brt lp, sl spec, sl calc: fast
 mod difse, mod fast stmg, bri bl cut, mod even ring

SS: lt gy-brn, occ wh, occ clr, sb rnd-rnd, vf-f
 gr, ply-srt, mod frm-frm, brt lp, sl spec, sl calc:
 mod difse, mod fast stmg, bri bl cut, mod even
 ring

SS: lt gy-brn, occ wh, occ clr, sb rnd-rnd, vf-f
 gr, ply-srt, mod frm-frm, brt lp, sl spec, sl
 calc: fast difse, mod fast stmg, bri bl cut, mod
 even ring

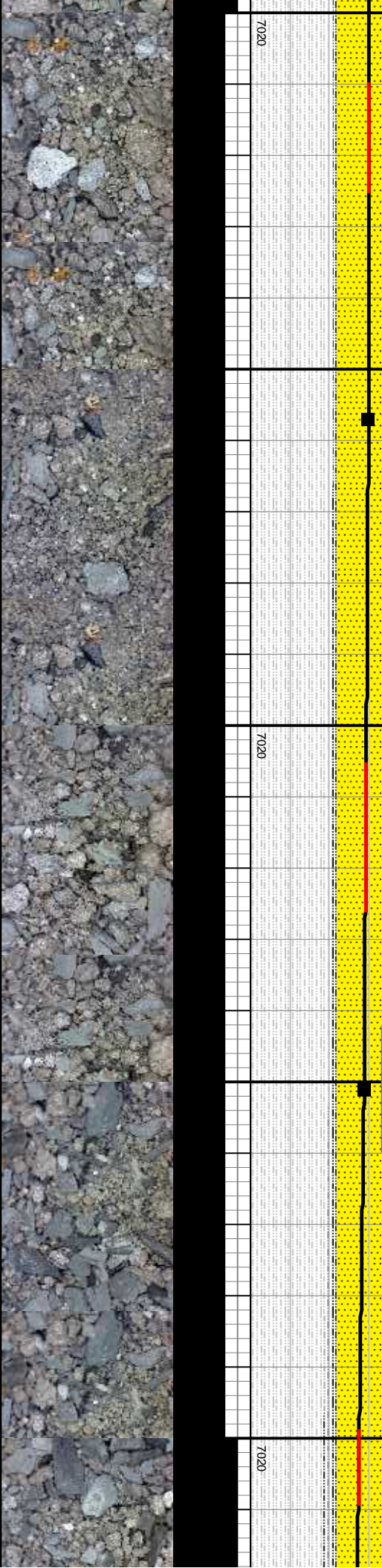
SS: lt gy-brn, occ wh, occ clr, sb rnd-rnd, vf-f
 gr, ply-srt, mod frm-frm, brt lp, sl spec, sl
 calc: fast difse, mod fast stmg, bri bl cut, mod
 even ring

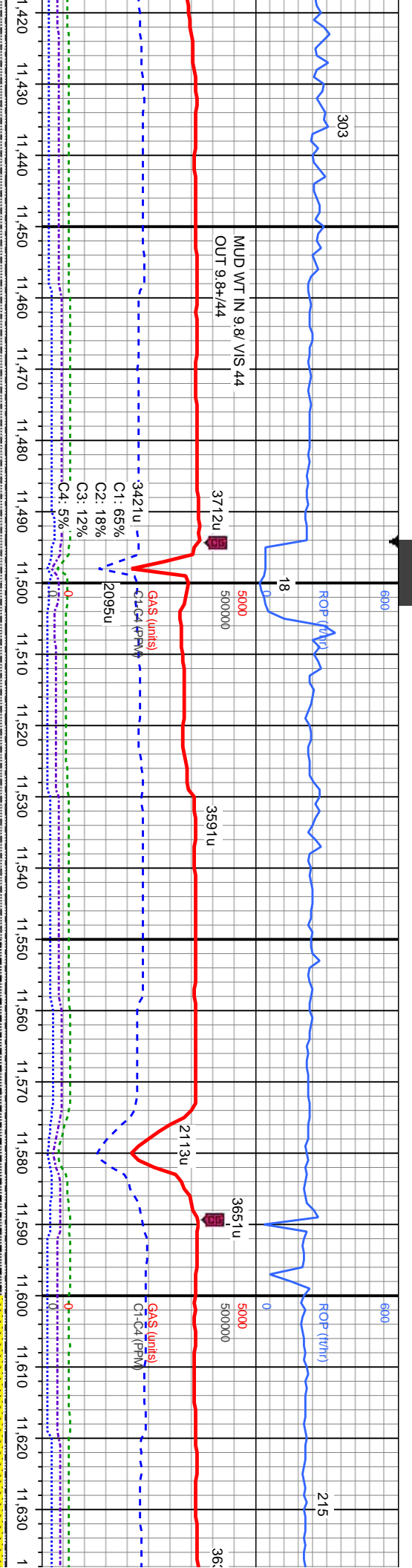


Depth (ft)	Stratigraphic Unit	Gamma (units)
11,250	SS: lt gy-brn, occ wh, occ clr, sb md-rnd, vf-f gr, ply-srt, mod frm-frm, brit ip, sl spec, sl calc; mod difse, fast stmg, bl cut, mod even ring	0
11,257	SS: lt gy-brn, occ wh, occ clr, sb md-rnd, vf-f gr, ply-srt, mod frm-frm, brit ip, sl spec, sl calc; mod difse, fast stmg, bl cut, mod even ring	78
11,290	SS: lt gy-brn, occ wh, occ clr, sb md-rnd, vf-f gr, ply-srt, mod frm-frm, brit ip, sl spec, sl calc; mod difse, fast stmg, bl cut, mod even ring	0
11,300	SS: lt gy-brn, occ wh, occ clr, sb md-rnd, vf-f gr, ply-srt, mod frm-frm, brit ip, sl spec, sl calc; mod difse, fast stmg, bl cut, mod even ring	0
11,350	SS: lt gy-brn, occ wh, occ clr, sb md-rnd, vf-f gr, ply-srt, mod frm-frm, brit ip, sl spec, sl calc; mod difse, fast stmg, bl cut, mod even ring	0
11,357	SS: lt gy-brn, occ wh, occ clr, sb md-rnd, vf-f gr, ply-srt, mod frm-frm, brit ip, sl spec, sl calc; mod difse, fast stmg, bl cut, mod even ring	84
11,400	SS: lt gy-brn, occ wh, occ clr, sb md-rnd, vf-f gr, ply-srt, mod frm-frm, brit ip, sl spec, sl calc; mod difse, fast stmg, bl cut, mod even ring	0

MD: 11,257'
 Inclination: 90°
 Azimuth: 358.6°
 TVD: 6,989.88'
 VS: 1.51'

MD: 11,351'
 Inclination: 88.6°
 Azimuth: 357.9°
 TVD: 6,991.03'
 VS: 1.67'





MD: 11,444'
Inclination: 88.5°
Azimuth: 359.3°
TVD: 6,993.38'
VS: 1.51'

MD: 11,538'
Inclination: 88.2°
Azimuth: 359.5°
TVD: 6,996.09'
VS: 0.38'

MD: 11,632'
Inclination: 90.
Azimuth: 0°
TVD: 6,996.99'
VS: 2.71'

wh, sb rnd-rnd, vf-f gr, mod-w brit ip, sl spec, sl calc: SLTY	SS: lt gy-brn, occ wh, sb rnd-rnd, vf-f gr, mod-w srt, mod frm-frm, brit ip, sl spec, sl calc: SLTY SH: med gy - gy, occ dk gy, silty gr, pily-sb pily, frm - mod hd, rthy tex, non calc: fast difse, mod fast stmg, bri bl cut, mod even ring	SS: lt gy-brn, occ wh, sb rnd-rnd, vf-f gr, mod-w srt, mod frm-frm, brit ip, sl spec, sl calc: SLTY SH: med gy - gy, occ dk gy, silty gr, pily-sb pily, frm - mod hd, rthy tex, non calc: fast difse, mod fast stmg, bri bl cut, mod even ring	SS: lt gy-brn, occ wh, sb rnd-rnd, vf-f gr, mod-w srt, mod frm-frm, brit ip, sl spec, sl calc: SLTY SH: med gy - gy, occ dk gy, silty gr, pily-sb pily, frm - mod hd, rthy tex, non calc: fast difse, mod fast stmg, bri bl cut, mod even ring	SS: lt gy-brn, occ wh, sb rnd-rnd, vf-f gr, mod-w srt, mod frm-frm, brit ip, sl spec, sl calc: SLTY SH: med gy - gy, occ dk gy, silty gr, pily-sb pily, frm - mod hd, rthy tex, non calc: fast difse, mod fast stmg, bri bl cut, mod even ring
6920	6920	6920	6920	6920
300	300	300	300	300
GAMMA (units)	GAMMA (units)	GAMMA (units)	GAMMA (units)	GAMMA (units)
0	0	0	0	0
7020	7020	7020	7020	7020
TVD (ft)	TVD (ft)	TVD (ft)	TVD (ft)	TVD (ft)



