

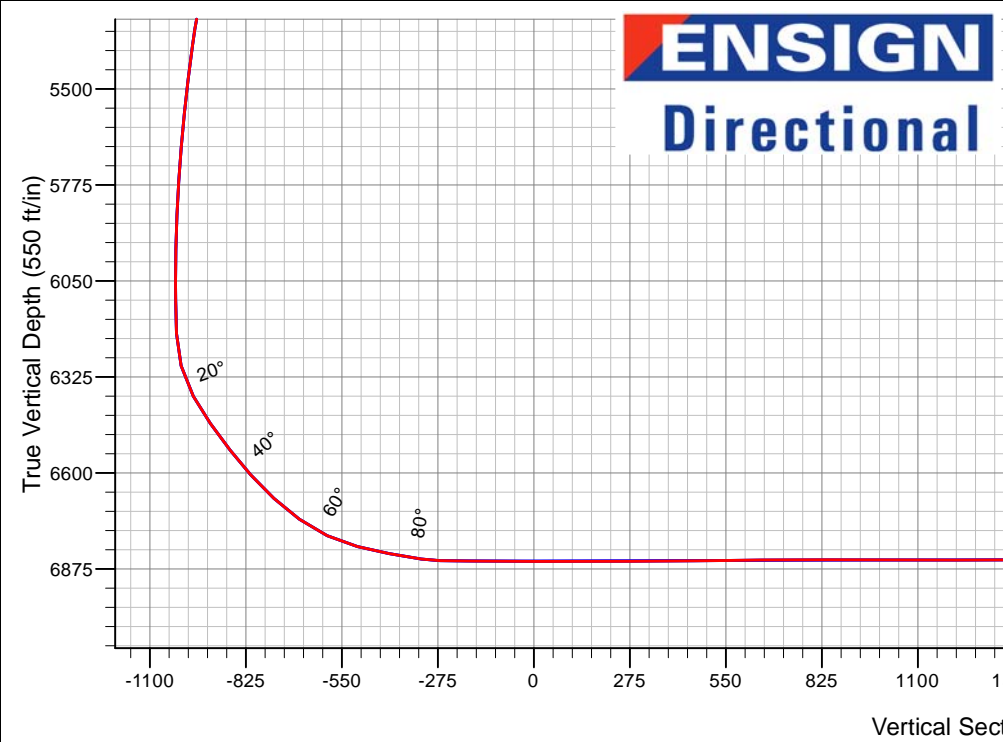
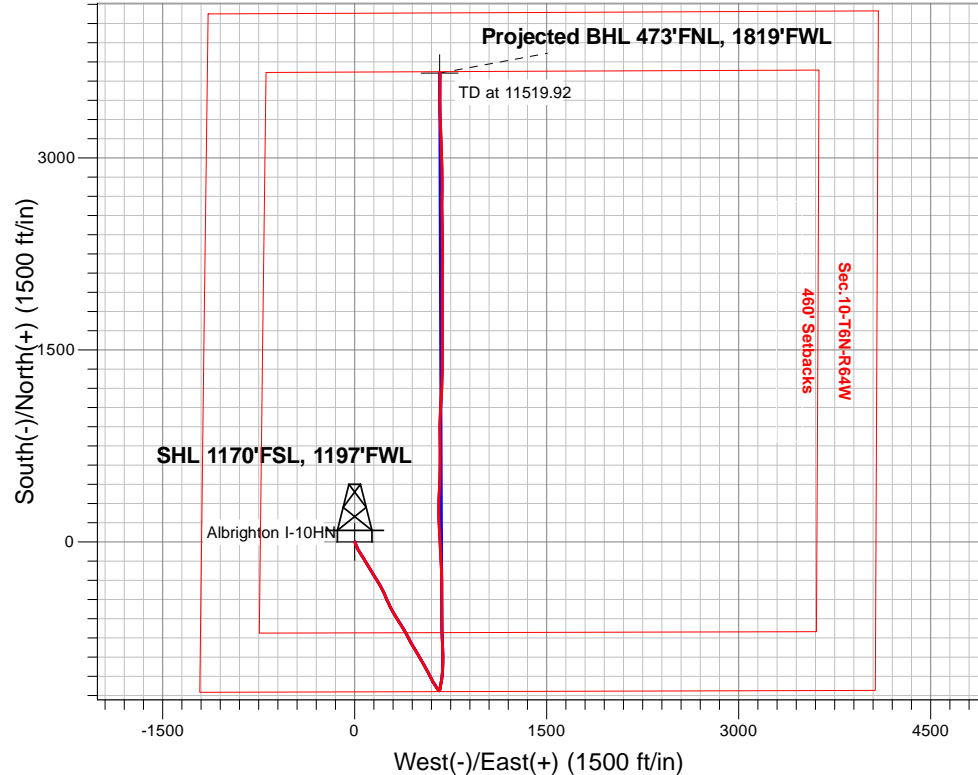
# Bayswater Exploration & Production, LLC

Well Name: **Albrighton I-10HN**

Surface Location: Albrighton 10-P Pad Sec.10-T6N-R64W  
 North American Datum 1983 , US State Plane 1983, Colorado Northern Zone  
 Ground Elevation: 4807.0  
 +N/-S+E/-W Northing Easting Latitude Longitude Slot  
 0.0 0.01425197.48 3266588.51 40.496613 -104.541421  
 RKB - 23' WELL @ 4830.0ft (RKB - 23')

## FINAL SURVEY

**Projected Bottom Hole Location**  
**11519'MD 6840'TVD 3661'N & 666'E of SHL**  
**90.0 degree Incl @ 0.4 degree AZM**

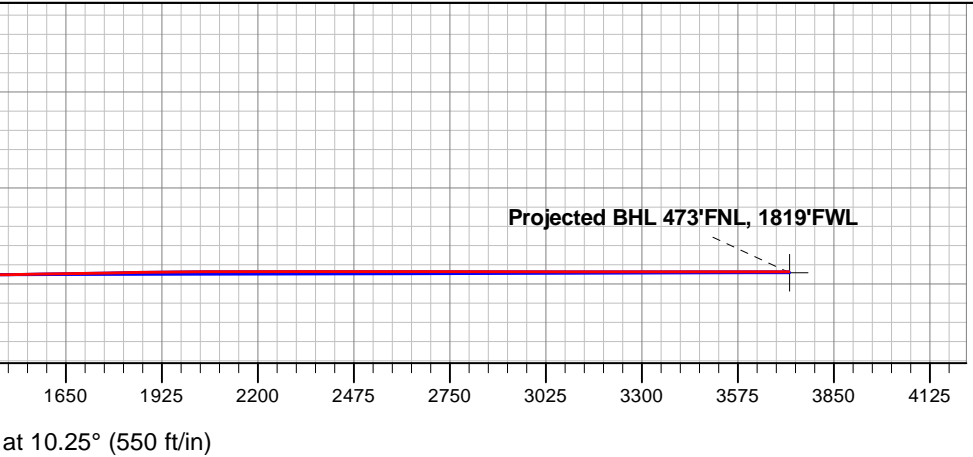


Albrighton 10-P Pad Sec.10-T6N-R64W  
 Albrighton I-10HN  
 Wellbore #1  
 6:39, February 18 2016

**ANNOTATIONS**  
 No annotation data is available.

**LEGEND**

- △ Albrighton I-10HN, Wellbore #1, Plan #7 (2-16-16) V0
- Wellbore #1
- Survey #1





# **Bayswater Exploration & Production, LLC**

**SEC.10-T6N-R64W**

**Albrighton 10-P Pad Sec.10-T6N-R64W**

**Albrighton I-10HN**

**Wellbore #1**

**Survey: Survey #1**

## **Standard Survey Report**

**18 February, 2016**



<b>Company:</b>	Bayswater Exploration & Production, LLC	<b>Local Co-ordinate Reference:</b>	Well Albrighton I-10HN
<b>Project:</b>	SEC.10-T6N-R64W	<b>TVD Reference:</b>	WELL @ 4830.0ft (RKB - 23')
<b>Site:</b>	Albrighton 10-P Pad Sec.10-T6N-R64W	<b>MD Reference:</b>	WELL @ 4830.0ft (RKB - 23')
<b>Well:</b>	Albrighton I-10HN	<b>North Reference:</b>	True
<b>Wellbore:</b>	Wellbore #1	<b>Survey Calculation Method:</b>	Minimum Curvature
<b>Design:</b>	Wellbore #1	<b>Database:</b>	US_EDM

<b>Project</b>	SEC.10-T6N-R64W, Weld County, Colorado		
<b>Map System:</b>	US State Plane 1983	<b>System Datum:</b>	Mean Sea Level
<b>Geo Datum:</b>	North American Datum 1983		Using Well Reference Point
<b>Map Zone:</b>	Colorado Northern Zone		Using geodetic scale factor

<b>Site</b>	Albrighton 10-P Pad Sec.10-T6N-R64W				
<b>Site Position:</b>		<b>Northing:</b>	1,425,196.03 usft	<b>Latitude:</b>	40.496612
<b>From:</b>	Lat/Long	<b>Easting:</b>	3,266,483.40 usft	<b>Longitude:</b>	-104.541799
<b>Position Uncertainty:</b>	0.0 ft	<b>Slot Radius:</b>	13-3/16 "	<b>Grid Convergence:</b>	0.62 °

<b>Well</b>	Albrighton I-10HN					
<b>Well Position</b>	<b>+N/-S</b>	0.0 ft	<b>Northing:</b>	1,425,197.48 usft	<b>Latitude:</b>	40.496613
	<b>+E/-W</b>	0.0 ft	<b>Easting:</b>	3,266,588.52 usft	<b>Longitude:</b>	-104.541421
<b>Position Uncertainty</b>		0.0 ft	<b>Wellhead Elevation:</b>	ft	<b>Ground Level:</b>	4,807.0 ft

<b>Wellbore</b>	Wellbore #1				
<b>Magnetics</b>	<b>Model Name</b>	<b>Sample Date</b>	<b>Declination (°)</b>	<b>Dip Angle (°)</b>	<b>Field Strength (nT)</b>
	IGRF2010	2/16/2016	8.12	67.00	52,712

<b>Design</b>	Wellbore #1				
<b>Audit Notes:</b>					
<b>Version:</b>	1.0	<b>Phase:</b>	ACTUAL	<b>Tie On Depth:</b>	0.0
<b>Vertical Section:</b>	<b>Depth From (TVD) (ft)</b>	<b>+N/-S (ft)</b>	<b>+E/-W (ft)</b>	<b>Direction (°)</b>	
	0.0	0.0	0.0	10.25	

<b>Survey Program</b>	<b>Date</b>	2/18/2016			
<b>From (ft)</b>	<b>To (ft)</b>	<b>Survey (Wellbore)</b>	<b>Tool Name</b>	<b>Description</b>	
23.0	11,519.0	Survey #1 (Wellbore #1)	MWD	MWD - Standard	

<b>Survey</b>										
<b>Measured Depth (ft)</b>	<b>Inclination (°)</b>	<b>Azimuth (°)</b>	<b>Vertical Depth (ft)</b>	<b>+N/-S (ft)</b>	<b>+E/-W (ft)</b>	<b>Vertical Section (ft)</b>	<b>Dogleg Rate (°/100usft)</b>	<b>Build Rate (°/100usft)</b>	<b>Turn Rate (°/100usft)</b>	
0.0	0.00	0.00	0.0	0.0	0.0	0.0	0.00	0.00	0.00	
1.0	0.00	0.00	1.0	0.0	0.0	0.0	0.00	0.00	0.00	
<b>SHL 1170'FSL, 1197'FWL</b>										
23.0	0.00	139.37	23.0	0.0	0.0	0.0	0.00	0.00	0.00	
125.0	0.43	139.37	125.0	-0.3	0.2	-0.2	0.42	0.42	0.00	
219.0	1.32	154.93	219.0	-1.5	0.9	-1.3	0.97	0.95	16.55	
315.0	2.11	165.81	314.9	-4.3	1.8	-3.9	0.89	0.82	11.33	
409.0	3.17	160.41	408.8	-8.4	3.1	-7.7	1.16	1.13	-5.74	
504.0	4.15	156.33	503.6	-14.0	5.4	-12.8	1.07	1.03	-4.29	
597.0	6.11	156.86	596.3	-21.6	8.7	-19.7	2.11	2.11	0.57	
692.0	7.51	160.66	690.6	-32.1	12.7	-29.4	1.55	1.47	4.00	

<b>Company:</b>	Bayswater Exploration & Production, LLC	<b>Local Co-ordinate Reference:</b>	Well Albrighton I-10HN
<b>Project:</b>	SEC.10-T6N-R64W	<b>TVD Reference:</b>	WELL @ 4830.0ft (RKB - 23')
<b>Site:</b>	Albrighton 10-P Pad Sec.10-T6N-R64W	<b>MD Reference:</b>	WELL @ 4830.0ft (RKB - 23')
<b>Well:</b>	Albrighton I-10HN	<b>North Reference:</b>	True
<b>Wellbore:</b>	Wellbore #1	<b>Survey Calculation Method:</b>	Minimum Curvature
<b>Design:</b>	Wellbore #1	<b>Database:</b>	US_EDM

Survey									
Measured Depth (ft)	Inclination (°)	Azimuth (°)	Vertical Depth (ft)	+N/-S (ft)	+E/-W (ft)	Vertical Section (ft)	Dogleg Rate (°/100usft)	Build Rate (°/100usft)	Turn Rate (°/100usft)
786.0	8.92	155.83	783.6	-44.6	17.8	-40.7	1.67	1.50	-5.14
878.0	10.05	152.18	874.4	-58.2	24.4	-52.9	1.39	1.23	-3.97
973.0	11.80	148.01	967.7	-73.8	33.4	-66.6	2.02	1.84	-4.39
1,066.0	12.56	146.83	1,058.6	-90.3	44.0	-81.0	0.86	0.82	-1.27
1,161.0	13.91	147.71	1,151.0	-108.6	55.8	-96.9	1.44	1.42	0.93
1,256.0	15.36	148.40	1,242.9	-129.0	68.5	-114.7	1.54	1.53	0.73
1,350.0	15.89	148.12	1,333.5	-150.5	81.8	-133.6	0.57	0.56	-0.30
1,445.0	15.94	150.93	1,424.8	-172.9	95.0	-153.3	0.81	0.05	2.96
1,507.0	16.03	149.04	1,484.4	-187.7	103.5	-166.3	0.85	0.15	-3.05
1,578.0	15.80	149.10	1,552.7	-204.4	113.5	-181.0	0.32	-0.32	0.08
1,673.0	15.30	147.70	1,644.2	-226.1	126.9	-199.9	0.66	-0.53	-1.47
1,766.0	16.30	148.00	1,733.7	-247.6	140.3	-218.7	1.08	1.08	0.32
1,861.0	15.10	146.30	1,825.2	-269.2	154.3	-237.4	1.35	-1.26	-1.79
1,954.0	16.20	145.80	1,914.7	-290.0	168.3	-255.4	1.19	1.18	-0.54
2,048.0	15.90	151.00	2,005.1	-312.1	181.9	-274.7	1.56	-0.32	5.53
2,142.0	15.40	148.60	2,095.6	-334.0	194.6	-294.0	0.87	-0.53	-2.55
2,234.0	14.90	155.20	2,184.4	-355.2	206.0	-312.9	1.95	-0.54	7.17
2,328.0	14.60	154.20	2,275.3	-376.8	216.2	-332.3	0.42	-0.32	-1.06
2,422.0	14.20	154.40	2,366.3	-397.9	226.3	-351.3	0.43	-0.43	0.21
2,517.0	13.80	152.40	2,458.5	-418.4	236.6	-369.7	0.66	-0.42	-2.11
2,608.0	14.80	158.40	2,546.7	-438.8	245.9	-388.1	1.96	1.10	6.59
2,699.0	14.30	156.50	2,634.8	-459.9	254.7	-407.3	0.76	-0.55	-2.09
2,797.0	13.80	156.80	2,729.9	-481.8	264.1	-427.1	0.52	-0.51	0.31
2,890.0	14.80	152.40	2,820.0	-502.5	274.0	-445.8	1.59	1.08	-4.73
2,983.0	14.20	152.40	2,910.0	-523.1	284.8	-464.2	0.65	-0.65	0.00
3,077.0	16.10	149.60	3,000.7	-544.6	296.7	-483.2	2.17	2.02	-2.98
3,171.0	15.50	148.90	3,091.2	-566.6	309.8	-502.5	0.67	-0.64	-0.74
3,265.0	15.40	148.60	3,181.8	-588.0	322.8	-521.2	0.14	-0.11	-0.32
3,358.0	15.10	147.70	3,271.5	-608.8	335.7	-539.4	0.41	-0.32	-0.97
3,452.0	14.30	146.80	3,362.4	-628.9	348.6	-556.8	0.89	-0.85	-0.96
3,546.0	14.50	148.40	3,453.5	-648.6	361.1	-574.0	0.47	0.21	1.70
3,640.0	14.10	148.00	3,544.6	-668.3	373.4	-591.3	0.44	-0.43	-0.43
3,735.0	13.70	151.40	3,636.8	-688.0	384.9	-608.6	0.96	-0.42	3.58
3,830.0	14.70	150.50	3,728.9	-708.4	396.2	-626.6	1.08	1.05	-0.95
3,925.0	15.70	152.80	3,820.6	-730.3	408.0	-646.1	1.23	1.05	2.42
4,020.0	16.00	151.70	3,912.0	-753.3	420.1	-666.5	0.45	0.32	-1.16
4,115.0	16.20	151.20	4,003.2	-776.4	432.7	-687.1	0.26	0.21	-0.53
4,208.0	16.10	151.20	4,092.6	-799.1	445.1	-707.2	0.11	-0.11	0.00
4,303.0	15.70	151.40	4,183.9	-821.9	457.6	-727.4	0.42	-0.42	0.21
4,397.0	16.10	147.50	4,274.3	-844.1	470.7	-746.9	1.21	0.43	-4.15
4,491.0	15.20	146.10	4,364.8	-865.3	484.6	-765.3	1.04	-0.96	-1.49
4,584.0	15.30	147.50	4,454.6	-885.8	498.0	-783.1	0.41	0.11	1.51
4,680.0	15.20	150.20	4,547.2	-907.4	511.1	-802.0	0.75	-0.10	2.81

<b>Company:</b>	Bayswater Exploration & Production, LLC	<b>Local Co-ordinate Reference:</b>	Well Albrighton I-10HN
<b>Project:</b>	SEC.10-T6N-R64W	<b>TVD Reference:</b>	WELL @ 4830.0ft (RKB - 23')
<b>Site:</b>	Albrighton 10-P Pad Sec.10-T6N-R64W	<b>MD Reference:</b>	WELL @ 4830.0ft (RKB - 23')
<b>Well:</b>	Albrighton I-10HN	<b>North Reference:</b>	True
<b>Wellbore:</b>	Wellbore #1	<b>Survey Calculation Method:</b>	Minimum Curvature
<b>Design:</b>	Wellbore #1	<b>Database:</b>	US_EDM

Survey										
Measured Depth (ft)	Inclination (°)	Azimuth (°)	Vertical Depth (ft)	+N/-S (ft)	+E/-W (ft)	Vertical Section (ft)	Dogleg Rate (°/100usft)	Build Rate (°/100usft)	Turn Rate (°/100usft)	
4,774.0	16.50	151.70	4,637.6	-929.8	523.5	-821.9	1.45	1.38	1.60	
4,868.0	15.60	152.10	4,728.0	-952.7	535.8	-842.2	0.96	-0.96	0.43	
4,961.0	15.70	152.40	4,817.5	-974.9	547.4	-862.0	0.14	0.11	0.32	
5,056.0	16.30	150.70	4,908.8	-998.0	559.9	-882.4	0.80	0.63	-1.79	
5,149.0	16.70	152.40	4,998.0	-1,021.2	572.5	-903.1	0.67	0.43	1.83	
5,241.0	15.50	151.40	5,086.4	-1,043.7	584.5	-923.1	1.34	-1.30	-1.09	
5,334.0	15.30	152.60	5,176.0	-1,065.5	596.1	-942.5	0.40	-0.22	1.29	
5,429.0	13.50	152.60	5,268.1	-1,086.5	607.0	-961.2	1.89	-1.89	0.00	
5,522.0	11.30	146.50	5,358.9	-1,103.7	617.0	-976.4	2.75	-2.37	-6.56	
5,616.0	9.40	144.20	5,451.4	-1,117.6	626.6	-988.3	2.07	-2.02	-2.45	
5,711.0	7.70	151.00	5,545.3	-1,129.5	634.2	-998.7	2.08	-1.79	7.16	
5,804.0	7.10	150.50	5,637.5	-1,139.9	640.0	-1,007.9	0.65	-0.65	-0.54	
5,898.0	6.30	138.40	5,730.9	-1,148.8	646.3	-1,015.6	1.72	-0.85	-12.87	
5,993.0	5.10	136.10	5,825.4	-1,155.8	652.7	-1,021.2	1.29	-1.26	-2.42	
6,087.0	2.60	133.30	5,919.2	-1,160.2	657.2	-1,024.9	2.67	-2.66	-2.98	
6,179.0	1.00	121.70	6,011.1	-1,162.1	659.4	-1,026.3	1.77	-1.74	-12.61	
6,273.0	0.70	97.60	6,105.1	-1,162.6	660.6	-1,026.6	0.49	-0.32	-25.64	
6,368.0	2.60	32.90	6,200.1	-1,160.9	662.4	-1,024.5	2.51	2.00	-68.11	
6,462.0	14.50	5.50	6,292.9	-1,147.3	664.7	-1,010.8	13.03	12.66	-29.15	
6,556.0	29.20	12.70	6,379.9	-1,113.0	670.9	-976.0	15.87	15.64	7.66	
6,649.0	34.90	8.10	6,458.7	-1,064.5	679.6	-926.7	6.66	6.13	-4.95	
6,743.0	38.00	3.50	6,534.3	-1,009.0	685.2	-871.0	4.39	3.30	-4.89	
6,837.0	42.40	1.60	6,606.1	-948.4	687.8	-810.9	4.86	4.68	-2.02	
6,932.0	47.70	359.00	6,673.2	-881.2	688.1	-744.8	5.90	5.58	-2.74	
7,027.0	55.10	357.00	6,732.5	-807.1	685.5	-672.3	7.96	7.79	-2.11	
7,122.0	64.70	357.40	6,780.0	-725.1	681.5					
7,216.0	76.90	0.20	6,810.9	-636.5	679.7					Planned TPZ @ 7149', 470' FSL, 1878' FWL
7,310.0	78.70	0.00	6,830.8	-544.6	679.8	-415.0	1.93	1.91	-0.21	
7,405.0	81.60	359.00	6,847.0	-451.0	679.0	-323.1	3.22	3.05	-1.05	
7,460.0	89.40	359.90	6,851.3	-396.3	678.5	-269.3	14.28	14.18	1.64	
7,553.0	89.60	359.50	6,852.1	-303.3	678.0	-177.8	0.48	0.22	-0.43	
7,646.0	89.40	357.60	6,853.0	-210.3	675.7	-86.8	2.05	-0.22	-2.04	
7,740.0	90.00	357.40	6,853.4	-116.4	671.6	4.9	0.67	0.64	-0.21	
7,834.0	89.90	356.90	6,853.5	-22.5	666.9	96.5	0.54	-0.11	-0.53	
7,927.0	90.50	356.50	6,853.2	70.3	661.5	186.9	0.78	0.65	-0.43	
8,021.0	90.00	357.60	6,852.8	164.2	656.7	278.4	1.29	-0.53	1.17	
8,115.0	90.30	0.90	6,852.5	258.2	655.5	370.7	3.53	0.32	3.51	
8,208.0	90.70	2.50	6,851.7	351.1	658.2	462.6	1.77	0.43	1.72	
8,302.0	90.60	2.70	6,850.7	445.0	662.5	555.8	0.24	-0.11	0.21	
8,398.0	90.40	1.10	6,849.8	541.0	665.7	650.8	1.68	-0.21	-1.67	
8,493.0	90.40	0.20	6,849.2	636.0	666.8	744.4	0.95	0.00	-0.95	
8,588.0	90.00	359.00	6,848.8	731.0	666.1	837.8	1.33	-0.42	-1.26	
8,683.0	89.70	359.30	6,849.1	826.0	664.7	931.0	0.45	-0.32	0.32	

<b>Company:</b>	Bayswater Exploration & Production, LLC	<b>Local Co-ordinate Reference:</b>	Well Albrighton I-10HN
<b>Project:</b>	SEC.10-T6N-R64W	<b>TVD Reference:</b>	WELL @ 4830.0ft (RKB - 23')
<b>Site:</b>	Albrighton 10-P Pad Sec.10-T6N-R64W	<b>MD Reference:</b>	WELL @ 4830.0ft (RKB - 23')
<b>Well:</b>	Albrighton I-10HN	<b>North Reference:</b>	True
<b>Wellbore:</b>	Wellbore #1	<b>Survey Calculation Method:</b>	Minimum Curvature
<b>Design:</b>	Wellbore #1	<b>Database:</b>	US_EDM

Survey										
Measured Depth (ft)	Inclination (°)	Azimuth (°)	Vertical Depth (ft)	+N/-S (ft)	+E/-W (ft)	Vertical Section (ft)	Dogleg Rate (°/100usft)	Build Rate (°/100usft)	Turn Rate (°/100usft)	
8,777.0	89.70	0.60	6,849.6	920.0	664.6	1,023.5	1.38	0.00	1.38	
8,871.0	90.00	3.50	6,849.8	1,013.9	668.0	1,116.5	3.10	0.32	3.09	
8,965.0	90.00	3.40	6,849.8	1,107.7	673.6	1,209.9	0.11	0.00	-0.11	
9,059.0	90.40	3.00	6,849.5	1,201.6	678.9	1,303.2	0.60	0.43	-0.43	
9,154.0	90.00	0.70	6,849.2	1,296.5	681.9	1,397.1	2.46	-0.42	-2.42	
9,247.0	90.70	0.60	6,848.6	1,389.5	683.0	1,488.8	0.76	0.75	-0.11	
9,342.0	91.20	0.40	6,847.0	1,484.5	683.8	1,582.4	0.57	0.53	-0.21	
9,437.0	90.70	359.20	6,845.4	1,579.5	683.5	1,675.9	1.37	-0.53	-1.26	
9,531.0	91.00	359.90	6,844.1	1,673.5	682.7	1,768.2	0.81	0.32	0.74	
9,624.0	91.00	0.00	6,842.4	1,766.4	682.7	1,859.7	0.11	0.00	0.11	
9,718.0	90.90	0.00	6,840.9	1,860.4	682.7	1,952.2	0.11	-0.11	0.00	
9,812.0	90.30	0.40	6,839.9	1,954.4	683.0	2,044.7	0.77	-0.64	0.43	
9,904.0	90.00	0.60	6,839.6	2,046.4	683.8	2,135.4	0.39	-0.33	0.22	
9,997.0	90.00	0.60	6,839.6	2,139.4	684.8	2,227.1	0.00	0.00	0.00	
10,091.0	89.90	0.00	6,839.7	2,233.4	685.3	2,319.7	0.65	-0.11	-0.64	
10,184.0	89.90	359.30	6,839.9	2,326.4	684.7	2,411.1	0.75	0.00	-0.75	
10,279.0	90.00	359.30	6,840.0	2,421.4	683.5	2,504.4	0.11	0.11	0.00	
10,374.0	90.00	358.80	6,840.0	2,516.4	682.0	2,597.6	0.53	0.00	-0.53	
10,466.0	90.00	359.70	6,840.0	2,608.4	680.8	2,687.9	0.98	0.00	0.98	
10,561.0	89.70	0.70	6,840.2	2,703.4	681.1	2,781.4	1.10	-0.32	1.05	
10,656.0	90.00	0.60	6,840.5	2,798.4	682.2	2,875.1	0.33	0.32	-0.11	
10,750.0	90.30	359.00	6,840.2	2,892.4	681.8	2,967.5	1.73	0.32	-1.70	
10,842.0	89.80	357.90	6,840.1	2,984.3	679.3	3,057.6	1.31	-0.54	-1.20	
10,936.0	90.00	357.60	6,840.3	3,078.3	675.7	3,149.3	0.38	0.21	-0.32	
11,031.0	90.00	357.70	6,840.3	3,173.2	671.8	3,242.1	0.11	0.00	0.11	
11,124.0	90.00	357.20	6,840.3	3,266.1	667.6	3,332.8	0.54	0.00	-0.54	
11,218.0	90.10	359.20	6,840.2	3,360.0	664.7	3,424.7	2.13	0.11	2.13	
11,312.0	90.00	0.40	6,840.1	3,454.0	664.3	3,517.1	1.28	-0.11	1.28	
11,406.0	89.90	0.90	6,840.2	3,548.0	665.4	3,609.8	0.54	-0.11	0.53	
11,443.0	90.00	0.40	6,840.3	3,585.0	665.8	3,646.3	1.38	0.27	-1.35	
11,519.0	90.00	0.40	6,840.3	3,661.0	666.4	3,721.2	0.00	0.00	0.00	
<b>BHL 470'FNL, 1815'FWL</b>										

Design Targets										
Target Name - hit/miss target - Shape	Dip Angle (°)	Dip Dir. (°)	TVD (ft)	+N/-S (ft)	+E/-W (ft)	Northing (usft)	Easting (usft)	Latitude	Longitude	
SHL 1170'FSL, 1197'FW - survey hits target center - Point	0.00	0.00	1.0	0.0	0.0	1,425,197.53	3,266,588.52	40.496613	-104.541421	
BHL 470'FNL, 1815'FWL - survey misses target center by 5.6ft at 11519.0ft MD (6840.3 TVD, 3661.0 N, 666.4 E) - Point	0.00	0.00	6,843.0	3,663.6	662.2	1,428,867.94	3,267,211.05	40.506669	-104.539040	

<b>Company:</b>	Bayswater Exploration & Production, LLC	<b>Local Co-ordinate Reference:</b>	Well Albrighton I-10HN
<b>Project:</b>	SEC.10-T6N-R64W	<b>TVD Reference:</b>	WELL @ 4830.0ft (RKB - 23')
<b>Site:</b>	Albrighton 10-P Pad Sec.10-T6N-R64W	<b>MD Reference:</b>	WELL @ 4830.0ft (RKB - 23')
<b>Well:</b>	Albrighton I-10HN	<b>North Reference:</b>	True
<b>Wellbore:</b>	Wellbore #1	<b>Survey Calculation Method:</b>	Minimum Curvature
<b>Design:</b>	Wellbore #1	<b>Database:</b>	US_EDM

Checked By: \_\_\_\_\_ Approved By: \_\_\_\_\_ Date: \_\_\_\_\_