

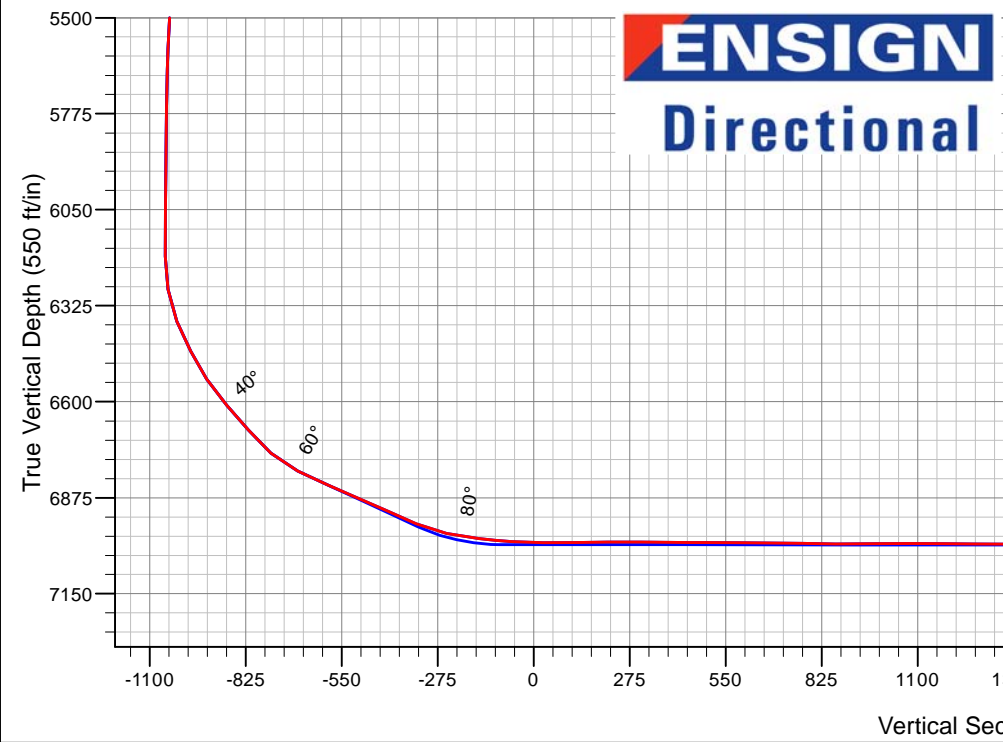
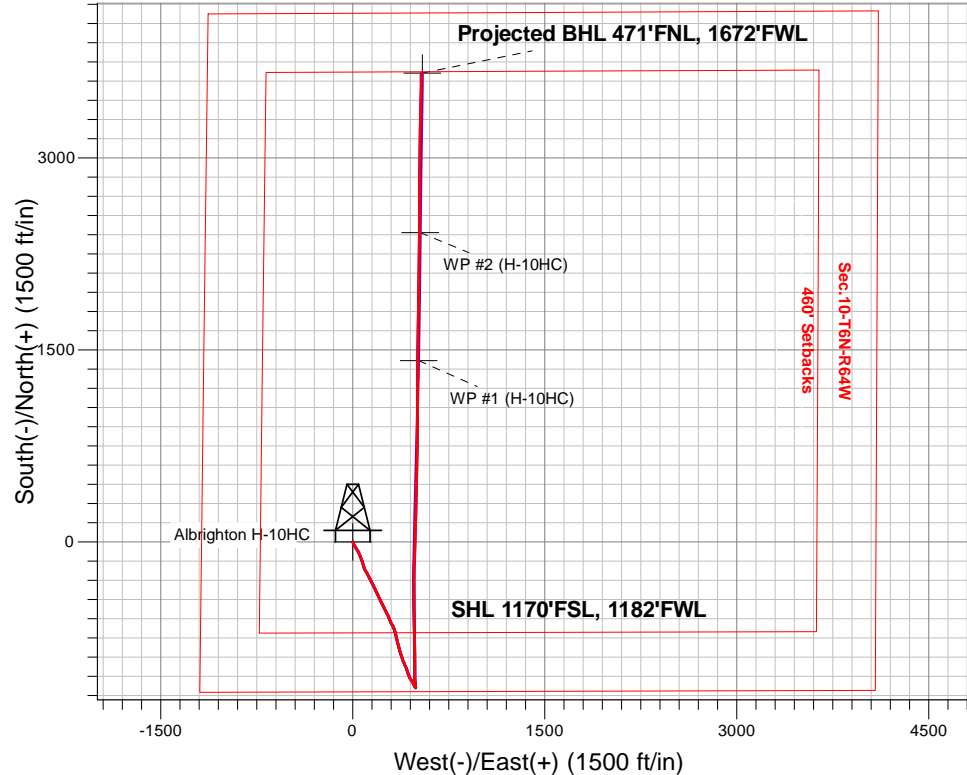
Bayswater Exploration & Production, LLC

Well Name: **Albrighton H-10HC**

Surface Location: Albrighton 10-P Pad Sec.10-T6N-R64W
 North American Datum 1983 , US State Plane 1983, Colorado Northern Zone
 Ground Elevation: 4806.0
 +N/-S+E/-W Northing Easting Longitude Slot
 0.0 0.0425197.32 3266573.50 40.496613 -104.541475
 RKB-23' WELL @ 4829.0ft (RKB-23')

FINAL SURVEY

Projected Bottom Hole Location
11553'MD 6997'TVD 3662'N & 534'E of SHL
91.5 degree Incl @ 0 degree AZM

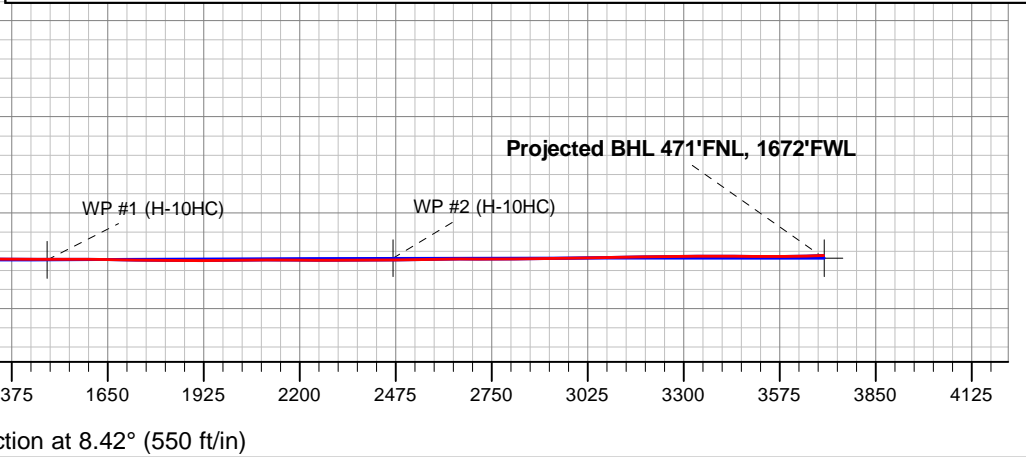


Albrighton 10-P Pad Sec.10-T6N-R64W
 Albrighton H-10HC
 Wellbore #1
 4:45, February 29 2016

ANNOTATIONS
 No annotation data is available.

LEGEND

- ✕ Albrighton H-10HC, Wellbore #1, Plan 7 (Feb 26 2016) V0
- Wellbore #1
- Survey #1





Bayswater Exploration & Production, LLC

SEC.10-T6N-R64W

Albrighton 10-P Pad Sec.10-T6N-R64W

Albrighton H-10HC

Wellbore #1

Survey: Survey #1

Standard Survey Report

29 February, 2016



Company:	Bayswater Exploration & Production, LLC	Local Co-ordinate Reference:	Well Albrighton H-10HC
Project:	SEC.10-T6N-R64W	TVD Reference:	WELL @ 4829.0ft (RKB-23')
Site:	Albrighton 10-P Pad Sec.10-T6N-R64W	MD Reference:	WELL @ 4829.0ft (RKB-23')
Well:	Albrighton H-10HC	North Reference:	True
Wellbore:	Wellbore #1	Survey Calculation Method:	Minimum Curvature
Design:	Wellbore #1	Database:	US_EDM

Project	SEC.10-T6N-R64W, Weld County, Colorado		
Map System:	US State Plane 1983	System Datum:	Mean Sea Level
Geo Datum:	North American Datum 1983		Using Well Reference Point
Map Zone:	Colorado Northern Zone		Using geodetic scale factor

Site	Albrighton 10-P Pad Sec.10-T6N-R64W				
Site Position:		Northing:	1,425,196.03 usft	Latitude:	40.496612
From:	Lat/Long	Easting:	3,266,483.40 usft	Longitude:	-104.541799
Position Uncertainty:	0.0 ft	Slot Radius:	13-3/16 "	Grid Convergence:	0.62 °

Well	Albrighton H-10HC					
Well Position	+N/-S	0.0 ft	Northing:	1,425,197.32 usft	Latitude:	40.496613
	+E/-W	0.0 ft	Easting:	3,266,573.50 usft	Longitude:	-104.541475
Position Uncertainty		0.0 ft	Wellhead Elevation:	ft	Ground Level:	4,806.0 ft

Wellbore	Wellbore #1				
Magnetics	Model Name	Sample Date	Declination (°)	Dip Angle (°)	Field Strength (nT)
	IGRF2010	2/12/2016	8.12	67.00	52,713

Design	Wellbore #1				
Audit Notes:					
Version:	1.0	Phase:	ACTUAL	Tie On Depth:	0.0
Vertical Section:	Depth From (TVD) (ft)	+N/-S (ft)	+E/-W (ft)	Direction (°)	
	0.0	0.0	0.0	8.42	

Survey Program	Date	2/29/2016			
From (ft)	To (ft)	Survey (Wellbore)	Tool Name	Description	
23.0	11,553.0	Survey #1 (Wellbore #1)	MWD	MWD - Standard	

Survey										
Measured Depth (ft)	Inclination (°)	Azimuth (°)	Vertical Depth (ft)	+N/-S (ft)	+E/-W (ft)	Vertical Section (ft)	Dogleg Rate (°/100usft)	Build Rate (°/100usft)	Turn Rate (°/100usft)	
0.0	0.00	0.00	0.0	0.0	0.0	0.0	0.00	0.00	0.00	
1.0	0.00	0.00	1.0	0.0	0.0	0.0	0.00	0.00	0.00	
SHL 1170'FSL, 1182'FWL										
23.0	0.00	157.42	23.0	0.0	0.0	0.0	0.00	0.00	0.00	
125.0	0.66	165.14	125.0	-0.6	0.2	-0.5	0.65	0.65	0.00	
219.0	0.87	177.86	219.0	-1.8	0.3	-1.7	0.29	0.22	13.53	
315.0	1.79	170.28	315.0	-4.0	0.6	-3.9	0.97	0.96	-7.90	
409.0	3.13	157.55	408.9	-7.8	1.8	-7.5	1.53	1.43	-13.54	
504.0	3.89	156.82	503.7	-13.2	4.1	-12.4	0.80	0.80	-0.77	
597.0	4.63	149.87	596.4	-19.3	7.2	-18.1	0.97	0.80	-7.47	
692.0	5.73	151.88	691.0	-26.8	11.4	-24.9	1.17	1.16	2.12	

Company:	Bayswater Exploration & Production, LLC	Local Co-ordinate Reference:	Well Albrighton H-10HC
Project:	SEC.10-T6N-R64W	TVD Reference:	WELL @ 4829.0ft (RKB-23')
Site:	Albrighton 10-P Pad Sec.10-T6N-R64W	MD Reference:	WELL @ 4829.0ft (RKB-23')
Well:	Albrighton H-10HC	North Reference:	True
Wellbore:	Wellbore #1	Survey Calculation Method:	Minimum Curvature
Design:	Wellbore #1	Database:	US_EDM

Survey									
Measured Depth (ft)	Inclination (°)	Azimuth (°)	Vertical Depth (ft)	+N/-S (ft)	+E/-W (ft)	Vertical Section (ft)	Dogleg Rate (°/100usft)	Build Rate (°/100usft)	Turn Rate (°/100usft)
786.0	6.22	147.92	784.5	-35.3	16.3	-32.5	0.68	0.52	-4.21
878.0	7.78	146.24	875.9	-44.7	22.4	-40.9	1.71	1.70	-1.83
973.0	9.02	148.07	969.8	-56.4	29.9	-51.4	1.34	1.31	1.93
1,066.0	10.19	151.16	1,061.5	-69.7	37.7	-63.5	1.37	1.26	3.32
1,161.0	11.31	154.60	1,154.9	-85.5	45.8	-77.9	1.36	1.18	3.62
1,256.0	12.45	158.38	1,247.8	-103.5	53.5	-94.5	1.45	1.20	3.98
1,350.0	12.81	159.24	1,339.5	-122.6	61.0	-112.4	0.43	0.38	0.91
1,445.0	13.63	160.24	1,432.0	-143.0	68.5	-131.4	0.90	0.86	1.05
1,507.0	13.88	159.79	1,492.3	-156.9	73.5	-144.4	0.44	0.40	-0.73
1,565.0	14.60	161.00	1,548.5	-170.3	78.3	-157.0	1.34	1.24	2.09
1,660.0	14.10	165.30	1,640.5	-192.8	85.1	-178.3	1.24	-0.53	4.53
1,755.0	14.20	156.70	1,732.6	-214.7	92.7	-198.8	2.21	0.11	-9.05
1,850.0	14.00	150.70	1,824.8	-235.4	102.9	-217.8	1.55	-0.21	-6.32
1,946.0	14.60	148.90	1,917.8	-255.9	114.9	-236.3	0.78	0.63	-1.88
2,041.0	15.70	151.60	2,009.5	-277.5	127.2	-255.9	1.38	1.16	2.84
2,136.0	16.30	151.20	2,100.8	-300.5	139.7	-276.8	0.64	0.63	-0.42
2,231.0	15.60	152.80	2,192.2	-323.5	152.0	-297.8	0.87	-0.74	1.68
2,326.0	16.10	156.30	2,283.6	-346.9	163.1	-319.3	1.14	0.53	3.68
2,421.0	16.40	156.30	2,374.8	-371.3	173.8	-341.8	0.32	0.32	0.00
2,517.0	16.10	152.80	2,466.9	-395.5	185.3	-364.1	1.07	-0.31	-3.65
2,612.0	16.40	152.80	2,558.1	-419.2	197.5	-385.7	0.32	0.32	0.00
2,707.0	16.40	154.50	2,649.3	-443.2	209.4	-407.8	0.51	0.00	1.79
2,802.0	17.00	156.30	2,740.3	-468.0	220.7	-430.7	0.83	0.63	1.89
2,897.0	15.10	154.40	2,831.6	-491.9	231.7	-452.7	2.07	-2.00	-2.00
2,993.0	16.00	153.30	2,924.0	-515.0	243.0	-473.9	0.99	0.94	-1.15
3,088.0	17.10	150.70	3,015.1	-538.9	255.7	-495.6	1.40	1.16	-2.74
3,183.0	15.70	155.40	3,106.2	-562.8	267.9	-517.4	2.03	-1.47	4.95
3,278.0	16.60	157.50	3,197.5	-587.0	278.4	-539.9	1.13	0.95	2.21
3,373.0	15.30	156.30	3,288.8	-611.0	288.7	-562.1	1.41	-1.37	-1.26
3,468.0	13.50	155.10	3,380.8	-632.5	298.4	-582.0	1.92	-1.89	-1.26
3,563.0	12.00	153.00	3,473.5	-651.4	307.5	-599.3	1.65	-1.58	-2.21
3,659.0	11.50	151.00	3,567.5	-668.7	316.7	-615.1	0.67	-0.52	-2.08
3,754.0	13.40	162.10	3,660.3	-687.4	324.7	-632.4	3.21	2.00	11.68
3,849.0	14.60	165.80	3,752.4	-709.5	331.0	-653.4	1.58	1.26	3.89
3,944.0	17.90	166.00	3,843.6	-735.3	337.5	-677.9	3.47	3.47	0.21
4,040.0	19.70	167.00	3,934.5	-765.4	344.7	-706.6	1.90	1.88	1.04
4,135.0	20.90	166.50	4,023.6	-797.4	352.2	-737.3	1.28	1.26	-0.53
4,230.0	21.30	165.60	4,112.2	-830.6	360.5	-768.9	0.54	0.42	-0.95
4,325.0	19.50	163.50	4,201.3	-862.5	369.3	-799.2	2.05	-1.89	-2.21
4,420.0	20.20	161.40	4,290.6	-893.3	379.0	-828.2	1.05	0.74	-2.21
4,516.0	18.00	158.40	4,381.3	-922.8	389.8	-855.8	2.51	-2.29	-3.13
4,611.0	17.60	156.00	4,471.8	-949.6	401.0	-880.6	0.88	-0.42	-2.53
4,706.0	15.50	157.50	4,562.9	-974.4	411.7	-903.6	2.26	-2.21	1.58

Company:	Bayswater Exploration & Production, LLC	Local Co-ordinate Reference:	Well Albrighton H-10HC
Project:	SEC.10-T6N-R64W	TVD Reference:	WELL @ 4829.0ft (RKB-23')
Site:	Albrighton 10-P Pad Sec.10-T6N-R64W	MD Reference:	WELL @ 4829.0ft (RKB-23')
Well:	Albrighton H-10HC	North Reference:	True
Wellbore:	Wellbore #1	Survey Calculation Method:	Minimum Curvature
Design:	Wellbore #1	Database:	US_EDM

Survey										
Measured Depth (ft)	Inclination (°)	Azimuth (°)	Vertical Depth (ft)	+N/-S (ft)	+E/-W (ft)	Vertical Section (ft)	Dogleg Rate (°/100usft)	Build Rate (°/100usft)	Turn Rate (°/100usft)	
4,801.0	15.80	161.40	4,654.3	-998.4	420.7	-926.0	1.15	0.32	4.11	
4,896.0	13.30	161.80	4,746.3	-1,021.0	428.2	-947.3	2.63	-2.63	0.42	
4,991.0	12.80	159.60	4,838.8	-1,041.3	435.3	-966.3	0.74	-0.53	-2.32	
5,088.0	11.60	154.20	4,933.6	-1,060.1	443.3	-983.8	1.71	-1.24	-5.57	
5,183.0	9.80	144.20	5,027.0	-1,075.3	452.2	-997.5	2.72	-1.89	-10.53	
5,278.0	9.80	143.30	5,120.6	-1,088.3	461.8	-1,009.0	0.16	0.00	-0.95	
5,373.0	9.40	149.60	5,214.3	-1,101.5	470.5	-1,020.7	1.18	-0.42	6.63	
5,467.0	5.60	155.60	5,307.5	-1,112.3	476.3	-1,030.6	4.12	-4.04	6.38	
5,560.0	4.80	159.80	5,400.1	-1,120.1	479.5	-1,037.8	0.95	-0.86	4.52	
5,655.0	3.60	155.40	5,494.8	-1,126.5	482.1	-1,043.8	1.31	-1.26	-4.63	
5,749.0	2.70	150.00	5,588.7	-1,131.1	484.5	-1,048.0	1.01	-0.96	-5.74	
5,842.0	1.90	138.00	5,681.6	-1,134.2	486.6	-1,050.7	1.00	-0.86	-12.90	
5,936.0	0.70	163.90	5,775.6	-1,135.9	487.8	-1,052.2	1.39	-1.28	27.55	
6,030.0	0.80	155.60	5,869.6	-1,137.1	488.2	-1,053.3	0.16	0.11	-8.83	
6,124.0	0.90	135.40	5,963.6	-1,138.2	489.0	-1,054.3	0.33	0.11	-21.49	
6,219.0	0.60	144.00	6,058.5	-1,139.1	489.8	-1,055.1	0.34	-0.32	9.05	
6,344.0	0.40	76.30	6,183.5	-1,139.5	490.6	-1,055.4	0.47	-0.16	-54.16	
6,439.0	9.50	348.60	6,278.1	-1,131.8	489.4	-1,047.9	9.99	9.58	-92.32	
6,534.0	23.00	354.60	6,369.1	-1,105.5	486.1	-1,022.4	14.30	14.21	6.32	
6,629.0	27.20	357.60	6,455.1	-1,065.3	483.4	-983.0	4.62	4.42	3.16	
6,722.0	33.40	0.70	6,535.4	-1,018.4	482.9	-936.7	6.87	6.67	3.33	
6,817.0	42.00	0.90	6,610.5	-960.4	483.7	-879.2	9.05	9.05	0.21	
6,911.0	40.90	359.70	6,680.9	-898.1	484.0	-817.6	1.44	-1.17	-1.28	
7,004.0	48.50	358.10	6,747.0	-832.8	482.7	-753.1	8.26	8.17	-1.72	
7,098.0	65.00	359.00	6,798.4	-754.5	480.8					
7,191.0	65.50	358.80	6,837.3	-670.0	479.2					
7,284.0	67.60	359.70	6,874.3	-584.7	478.0	-508.4	2.43	2.26	0.97	
7,378.0	66.40	0.00	6,911.0	-498.2	477.8	-422.9	1.31	-1.28	0.32	
7,404.4	66.26	0.06	6,921.6	-474.0	477.8	-398.9	0.56	-0.53	0.21	
LPL 660'FSL, 1680'FWL										
7,473.0	65.90	0.20	6,949.4	-411.3	478.0	-336.9	0.56	-0.53	0.21	
7,565.0	79.30	0.60	6,976.9	-323.7	478.6	-250.1	14.57	14.57	0.43	
7,660.0	82.70	0.40	6,991.7	-229.9	479.4	-157.2	3.58	3.58	-0.21	
7,707.0	84.70	0.60	6,996.9	-183.2	479.8	-111.0	4.28	4.26	0.43	
7,754.0	86.70	1.10	7,000.4	-136.3	480.5	-64.5	4.39	4.26	1.06	
7,846.0	89.10	2.70	7,003.8	-44.5	483.6	26.8	3.13	2.61	1.74	
7,939.0	91.30	1.80	7,003.5	48.5	487.2	119.3	2.56	2.37	-0.97	
8,033.0	90.90	0.90	7,001.7	142.4	489.4	212.6	1.05	-0.43	-0.96	
8,127.0	89.30	1.10	7,001.5	236.4	491.1	305.8	1.72	-1.70	0.21	
8,221.0	89.10	1.40	7,002.8	330.4	493.1	399.0	0.38	-0.21	0.32	
8,314.0	90.10	1.60	7,003.5	423.3	495.6	491.3	1.10	1.08	0.22	
8,408.0	89.30	1.80	7,004.0	517.3	498.3	584.7	0.88	-0.85	0.21	
8,502.0	89.90	0.70	7,004.6	611.3	500.4	678.0	1.33	0.64	-1.17	

Planned TPZ @ 7158', 470' FSL, 1662' FWL

Company:	Bayswater Exploration & Production, LLC	Local Co-ordinate Reference:	Well Albrighton H-10HC
Project:	SEC.10-T6N-R64W	TVD Reference:	WELL @ 4829.0ft (RKB-23')
Site:	Albrighton 10-P Pad Sec.10-T6N-R64W	MD Reference:	WELL @ 4829.0ft (RKB-23')
Well:	Albrighton H-10HC	North Reference:	True
Wellbore:	Wellbore #1	Survey Calculation Method:	Minimum Curvature
Design:	Wellbore #1	Database:	US_EDM

Survey										
Measured Depth (ft)	Inclination (°)	Azimuth (°)	Vertical Depth (ft)	+N/-S (ft)	+E/-W (ft)	Vertical Section (ft)	Dogleg Rate (°/100usft)	Build Rate (°/100usft)	Turn Rate (°/100usft)	
8,596.0	88.60	0.70	7,005.8	705.2	501.5	771.1	1.38	-1.38	0.00	
8,691.0	89.90	0.40	7,007.1	800.2	502.5	865.2	1.40	1.37	-0.32	
8,809.0	90.70	1.30	7,006.5	918.2	504.2	982.2	1.02	0.68	0.76	
8,904.0	89.80	359.70	7,006.1	1,013.2	505.0	1,076.2	1.93	-0.95	-1.68	
8,999.0	89.20	0.00	7,006.9	1,108.2	504.8	1,170.2	0.71	-0.63	0.32	
9,093.0	90.10	0.20	7,007.5	1,202.2	504.9	1,263.2	0.98	0.96	0.21	
9,187.0	89.40	0.20	7,007.9	1,296.2	505.3	1,356.2	0.74	-0.74	0.00	
9,281.0	90.20	359.50	7,008.2	1,390.2	505.0	1,449.2	1.13	0.85	-0.74	
9,306.9	90.12	359.88	7,008.1	1,416.1	504.9	1,474.8	1.51	-0.32	1.47	
WP #1 (H-10HC)										
9,376.0	89.90	0.90	7,008.1	1,485.2	505.4	1,543.2	1.51	-0.32	1.47	
9,470.0	88.90	2.10	7,009.1	1,579.1	507.8	1,636.5	1.66	-1.06	1.28	
9,563.0	89.30	1.60	7,010.6	1,672.1	510.8	1,728.9	0.69	0.43	-0.54	
9,659.0	89.10	0.70	7,011.9	1,768.1	512.7	1,824.1	0.96	-0.21	-0.94	
9,753.0	90.50	0.40	7,012.2	1,862.0	513.6	1,917.2	1.52	1.49	-0.32	
9,847.0	91.10	0.40	7,010.9	1,956.0	514.3	2,010.3	0.64	0.64	0.00	
9,940.0	90.00	0.70	7,010.0	2,049.0	515.2	2,102.4	1.23	-1.18	0.32	
10,034.0	89.10	0.00	7,010.8	2,143.0	515.8	2,195.4	1.21	-0.96	-0.74	
10,128.0	90.20	0.90	7,011.3	2,237.0	516.5	2,288.5	1.51	1.17	0.96	
10,220.0	90.50	0.90	7,010.8	2,329.0	518.0	2,379.7	0.33	0.33	0.00	
10,307.3	90.69	0.62	7,009.9	2,416.2	519.1	2,466.2	0.39	0.22	-0.32	
WP #2 (H-10HC)										
10,313.0	90.70	0.60	7,009.8	2,422.0	519.2	2,471.9	0.39	0.22	-0.32	
10,407.0	90.70	0.20	7,008.7	2,516.0	519.8	2,565.0	0.43	0.00	-0.43	
10,501.0	90.70	358.80	7,007.5	2,610.0	519.0	2,657.8	1.49	0.00	-1.49	
10,595.0	89.50	1.40	7,007.3	2,704.0	519.2	2,750.8	3.05	-1.28	2.77	
10,690.0	90.80	1.40	7,007.1	2,798.9	521.5	2,845.1	1.37	1.37	0.00	
10,782.0	90.90	0.40	7,005.7	2,890.9	522.9	2,936.3	1.09	0.11	-1.09	
10,877.0	90.90	359.20	7,004.2	2,985.9	522.6	3,030.2	1.26	0.00	-1.26	
10,972.0	90.60	1.80	7,003.0	3,080.9	523.4	3,124.3	2.75	-0.32	2.74	
11,066.0	91.90	1.10	7,000.9	3,174.8	525.8	3,217.6	1.57	1.38	-0.74	
11,158.0	90.00	1.60	6,999.4	3,266.8	528.0	3,308.9	2.14	-2.07	0.54	
11,252.0	90.00	1.40	6,999.4	3,360.7	530.4	3,402.2	0.21	0.00	-0.21	
11,347.0	89.40	1.10	6,999.9	3,455.7	532.5	3,496.4	0.71	-0.63	-0.32	
11,441.0	90.60	0.40	6,999.9	3,549.7	533.7	3,589.6	1.48	1.28	-0.74	
11,503.0	91.50	0.00	6,998.8	3,611.7	534.0	3,650.9	1.59	1.45	-0.65	
11,553.0	91.50	0.00	6,997.5	3,661.7	534.0	3,700.4	0.00	0.00	0.00	
BHL 470'FNL, 1680'FWL										

Company:	Bayswater Exploration & Production, LLC	Local Co-ordinate Reference:	Well Albrighton H-10HC
Project:	SEC.10-T6N-R64W	TVD Reference:	WELL @ 4829.0ft (RKB-23')
Site:	Albrighton 10-P Pad Sec.10-T6N-R64W	MD Reference:	WELL @ 4829.0ft (RKB-23')
Well:	Albrighton H-10HC	North Reference:	True
Wellbore:	Wellbore #1	Survey Calculation Method:	Minimum Curvature
Design:	Wellbore #1	Database:	US_EDM

Design Targets										
Target Name - hit/miss target - Shape	Dip Angle (°)	Dip Dir. (°)	TVD (ft)	+N/-S (ft)	+E/-W (ft)	Northing (usft)	Easting (usft)	Latitude	Longitude	
SHL 1170'FSL, 1182'FW - survey hits target center - Point	0.00	0.00	1.0	0.0	0.0	1,425,197.37	3,266,573.50	40.496613	-104.541475	
WP #2 (H-10HC) - survey misses target center by 8.8ft at 10307.3ft MD (7009.9 TVD, 2416.2 N, 519.1 E) - Point	0.00	0.00	7,005.0	2,416.1	526.4	1,427,618.88	3,267,073.74	40.503245	-104.539582	
BHL 470'FNL, 1680'FWL - survey misses target center by 11.2ft at 11553.0ft MD (6997.5 TVD, 3661.7 N, 534.0 E) - Point	0.00	0.00	7,005.0	3,662.6	542.3	1,428,865.38	3,267,076.12	40.506666	-104.539525	
WP #1 (H-10HC) - survey misses target center by 9.0ft at 9306.9ft MD (7008.1 TVD, 1416.0 N, 504.9 E) - Point	0.00	0.00	7,010.0	1,416.1	513.7	1,426,618.84	3,267,071.85	40.500500	-104.539628	

Checked By: _____ Approved By: _____ Date: _____