



Albrighton G-10HN

MD
2" : 100'

Directional Services

Company: Bayswater Exploration & Production, LLC
Well Name: Albrighton G-10HN

API:
Country/Parish: Weld
State: CO

Country: United States

Job number:
Field: WATTENBERG

Rig Id: Frontier 8
Survey Company: Ensign Directional Services

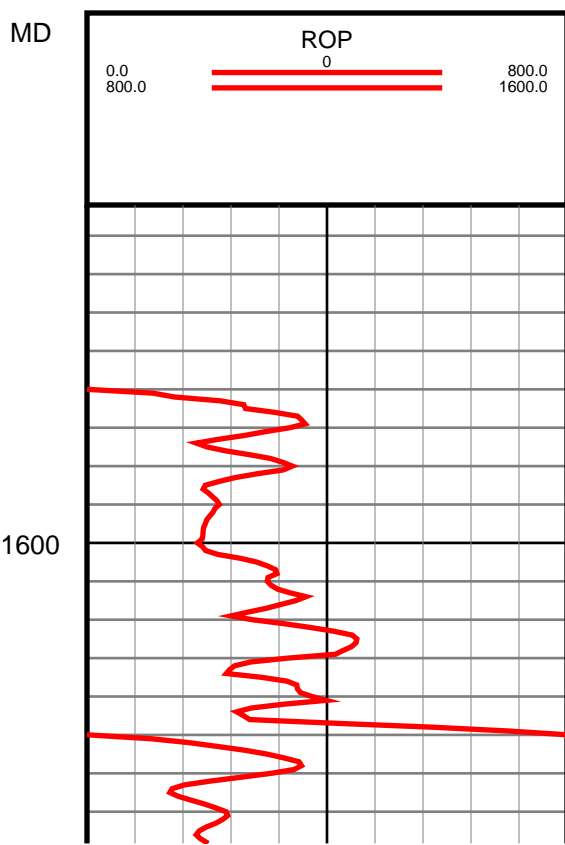
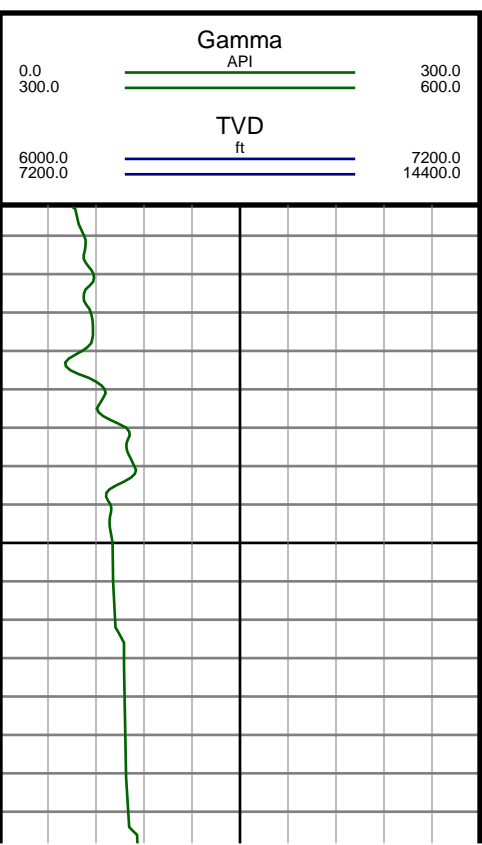
DIR. DRILLER DAY Zach Gentry
DIR. DRILLER NIGHT Chris Saykally
LWD/MWD DAYS Ryan Prue
LWD/MWD NIGHTS Jessie Snider

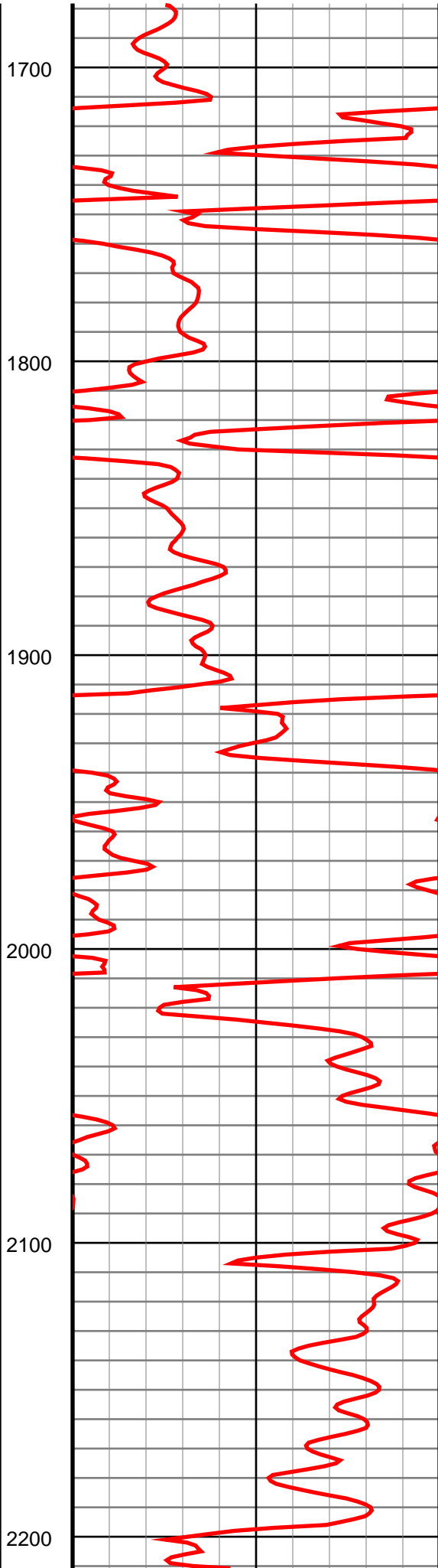
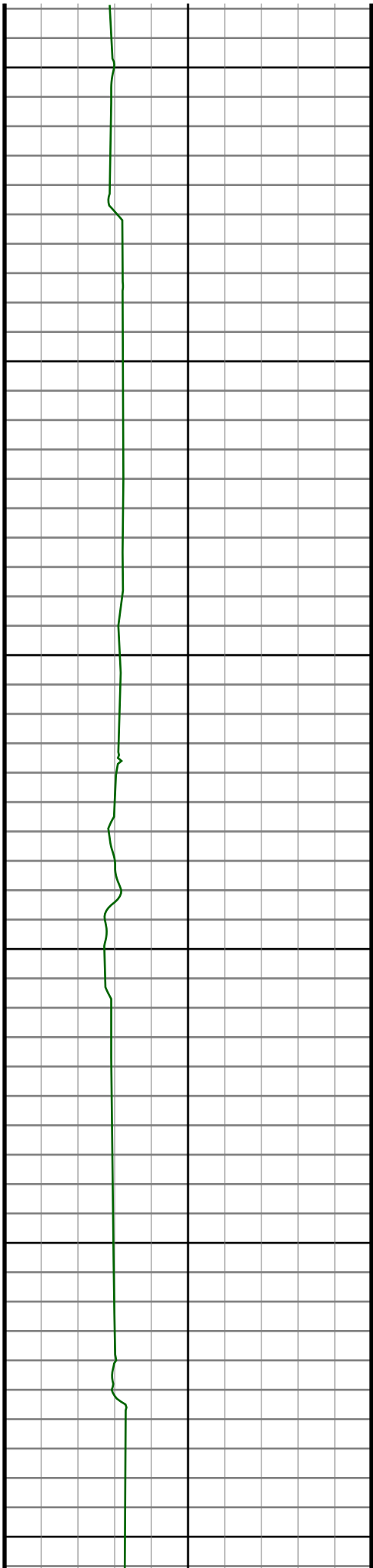
Log measurements: Gamma	Depth	Date
Depth measured from: Rig Floor ft	Start: 1560 ft	2/14/16
Maximum temperature:	End: 11635 ft	

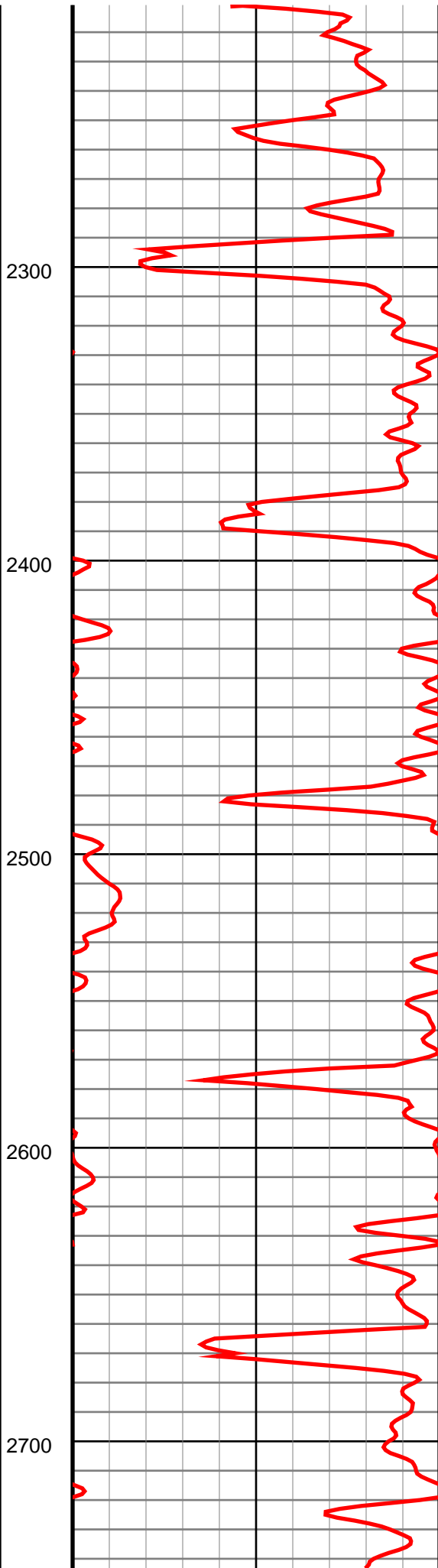
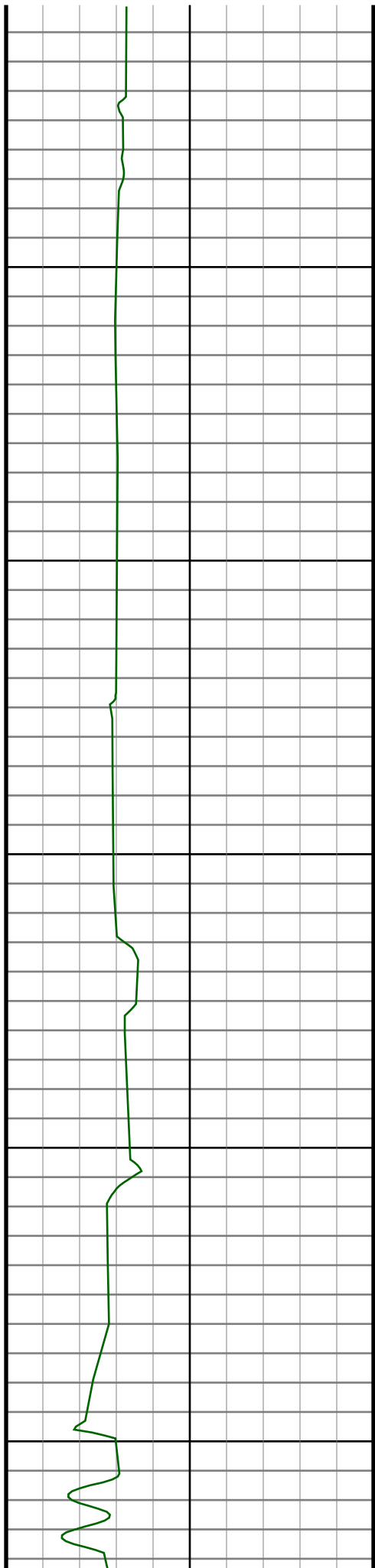
Casing	Depth	Size	Mud Type: H2O	Elevations
Surface:	1560 ft	9.625"	Density:	KB: 4853 ft
Intermediate:			Viscosity:	GL: 4830 ft
			Rm:	DF: 4853 ft
			Rmf:	
			Rmc:	

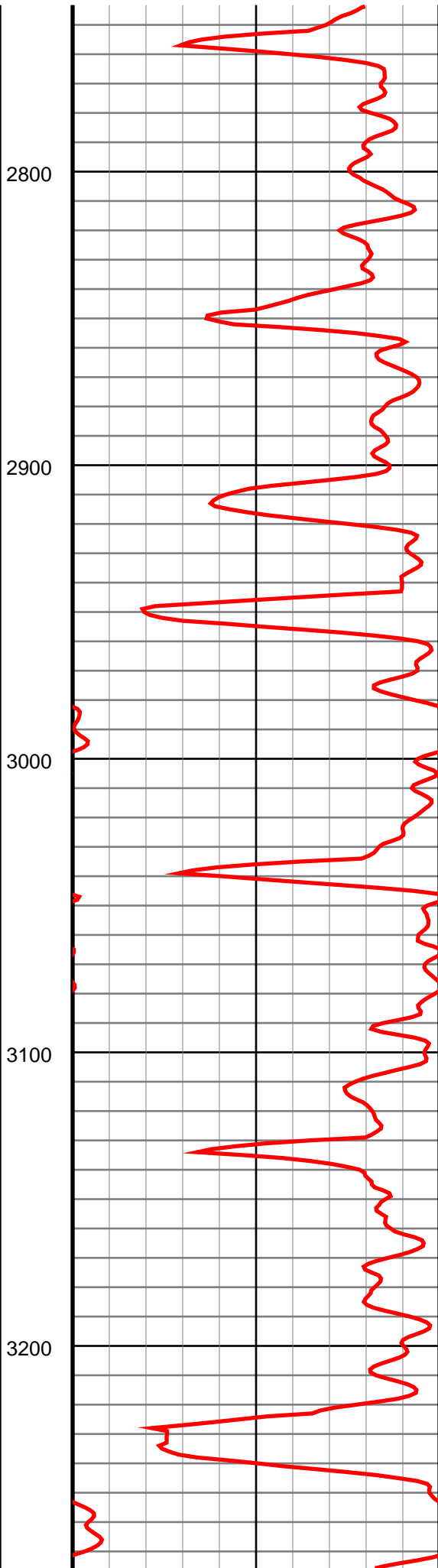
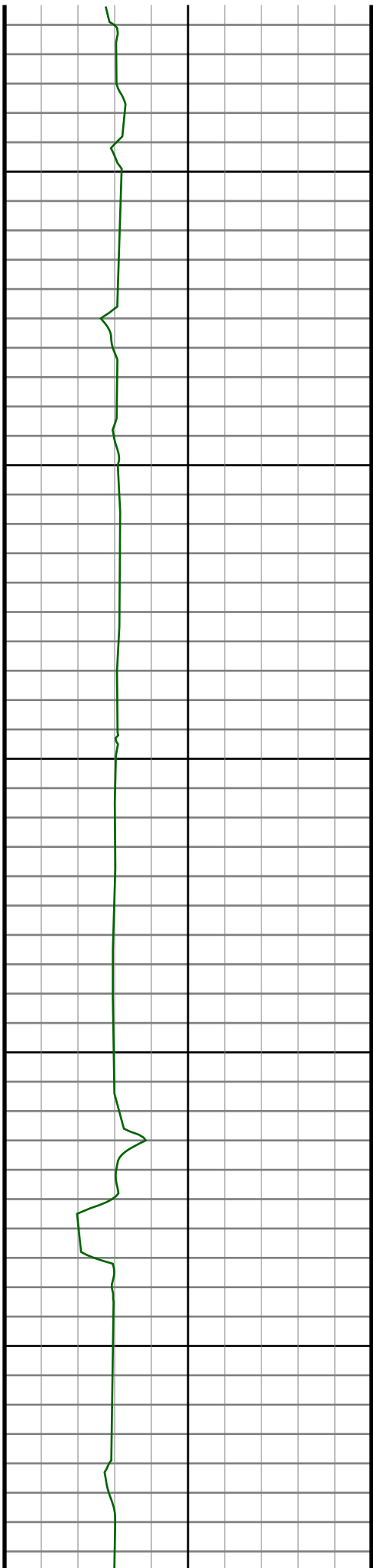
Run	Bit Size	Offsets		Depths		Dates	
		Gamma	Survey	Start	End	Start	End
1	8 3/4"	48.57 ft	49.94 ft	1560 ft	7387 ft	2/19/2016	2/20/2016
2	8 3/4"	78.96 ft	80.33 ft	7387 ft	9376 ft	2/20/2016	2/22/2016
3	8 3/4"	72.73 ft	74.10 ft	9376 ft	11635 ft	2/22/2016	2/23/2016
4							
5							
6							
7							
8							
9							
10							

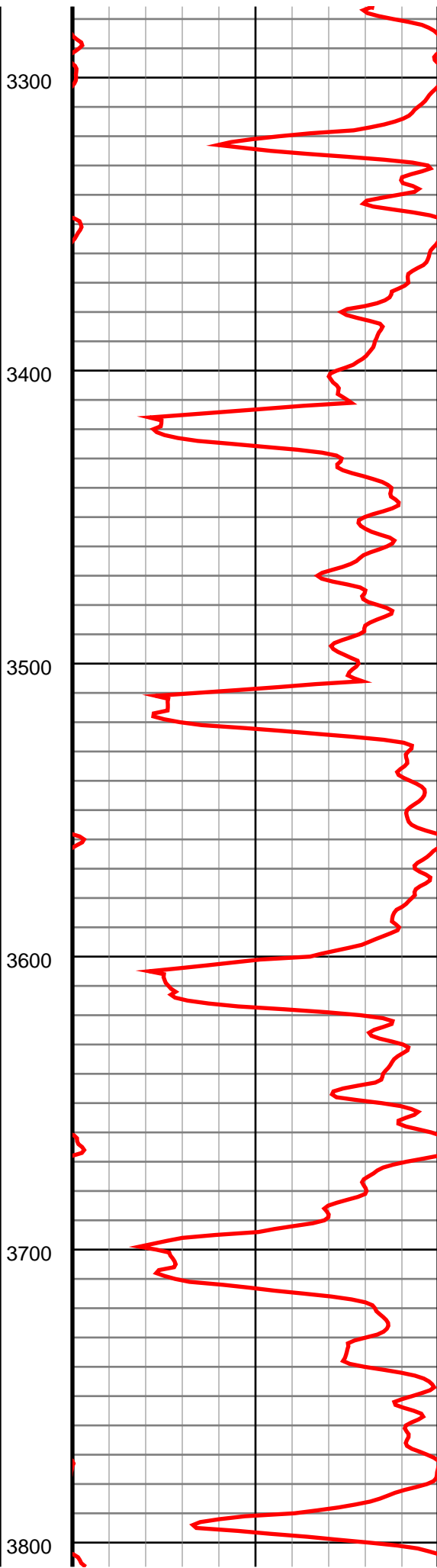
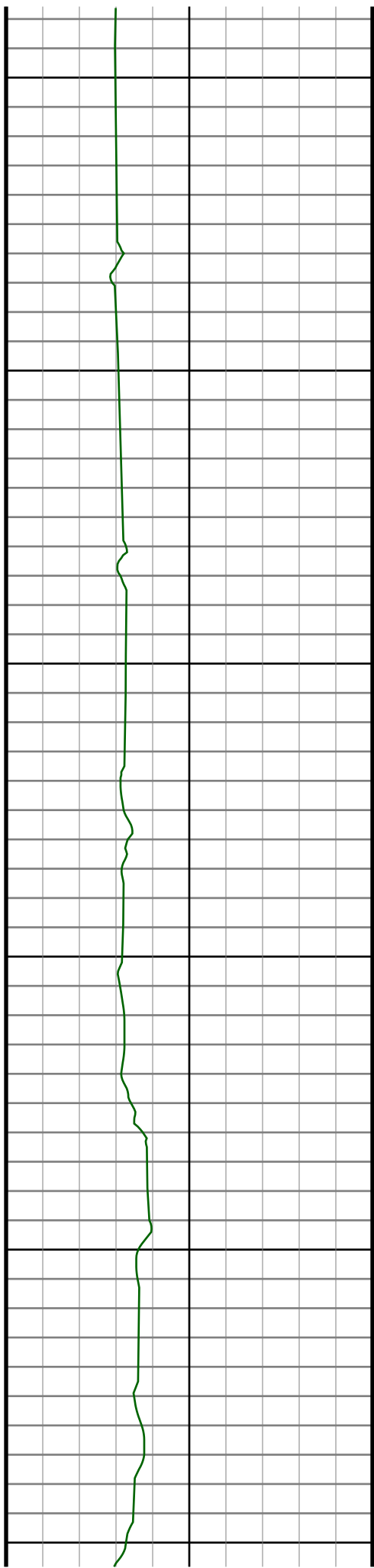
Ensign Directional Services uses its best efforts to provide its customers with accurate information and interpretations in conjunction with services performed but will not be held liable or responsible for the accuracy of such information or interpretation.

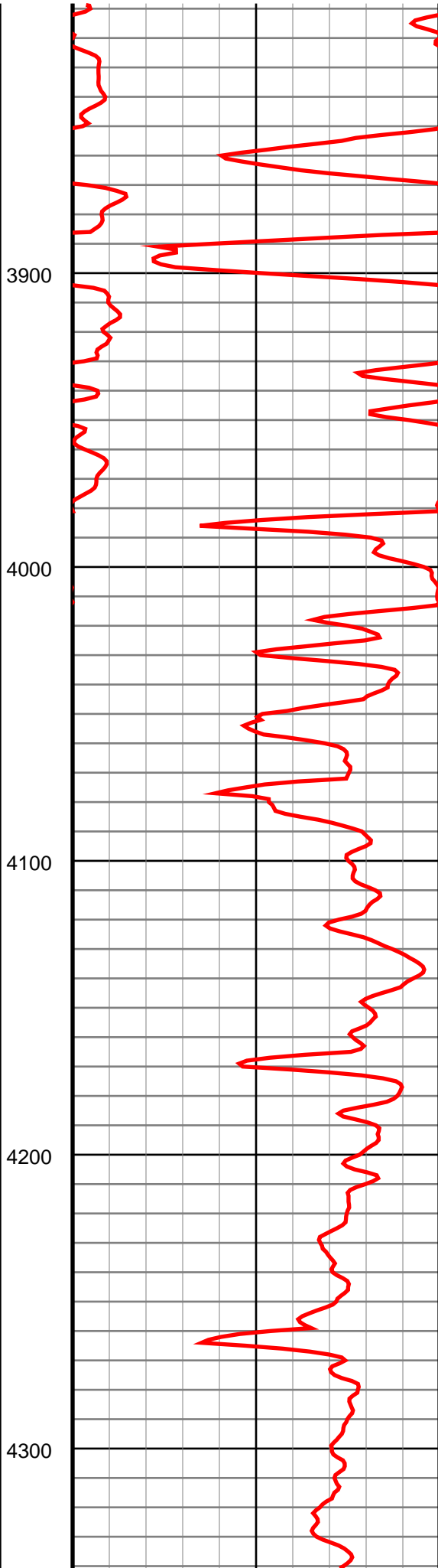
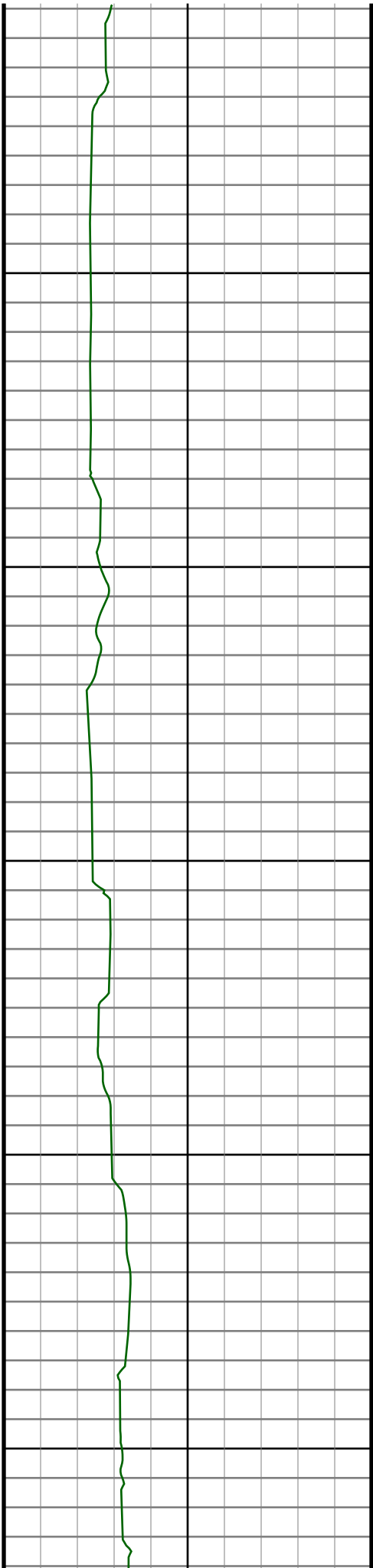


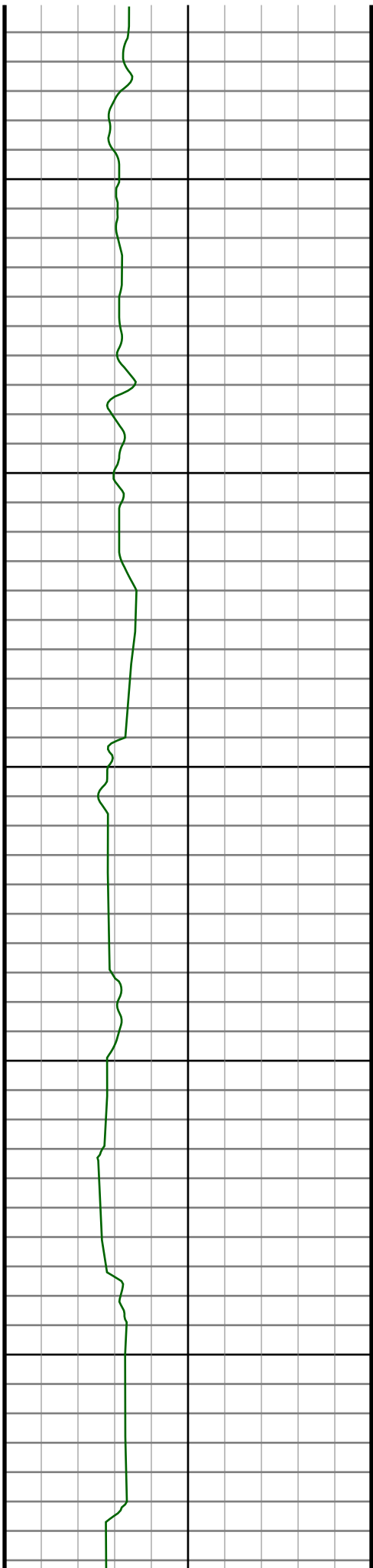


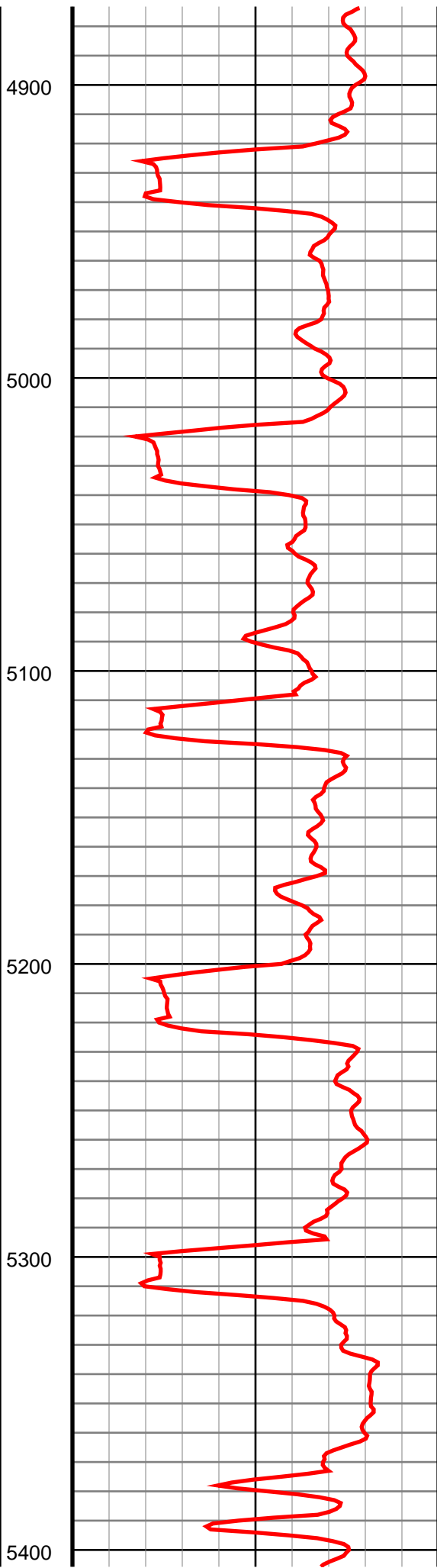
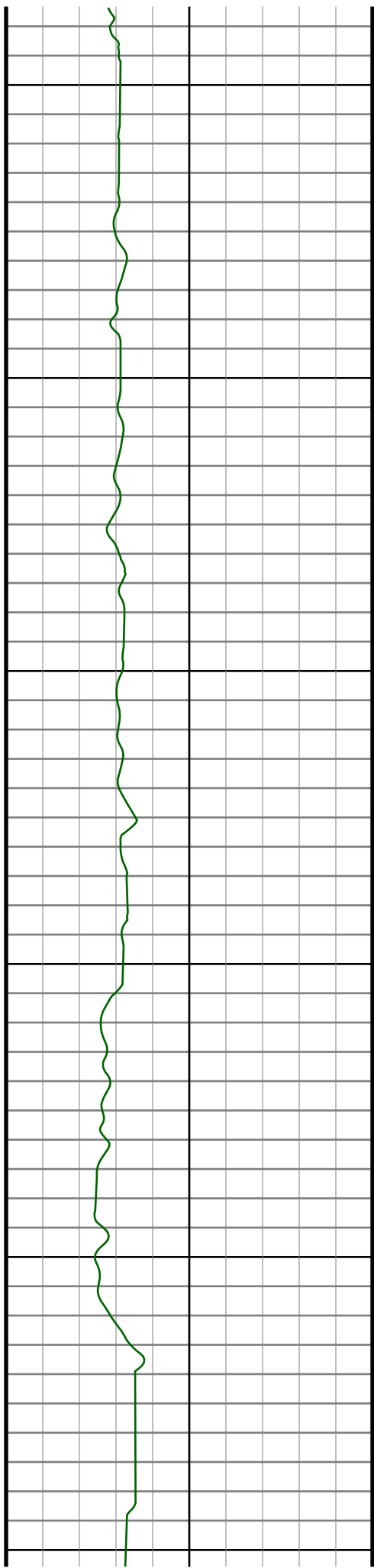


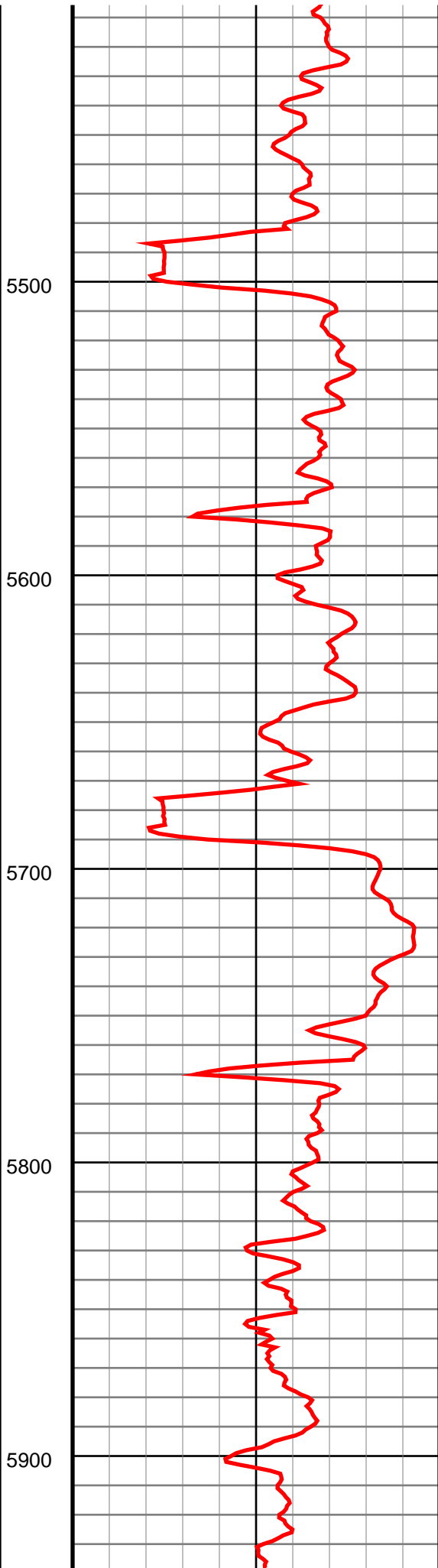
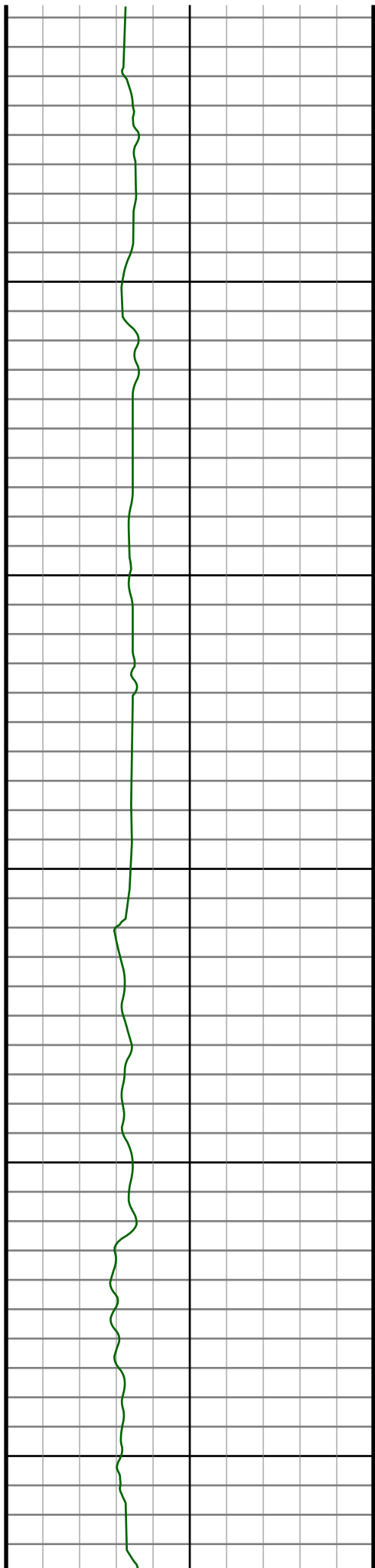


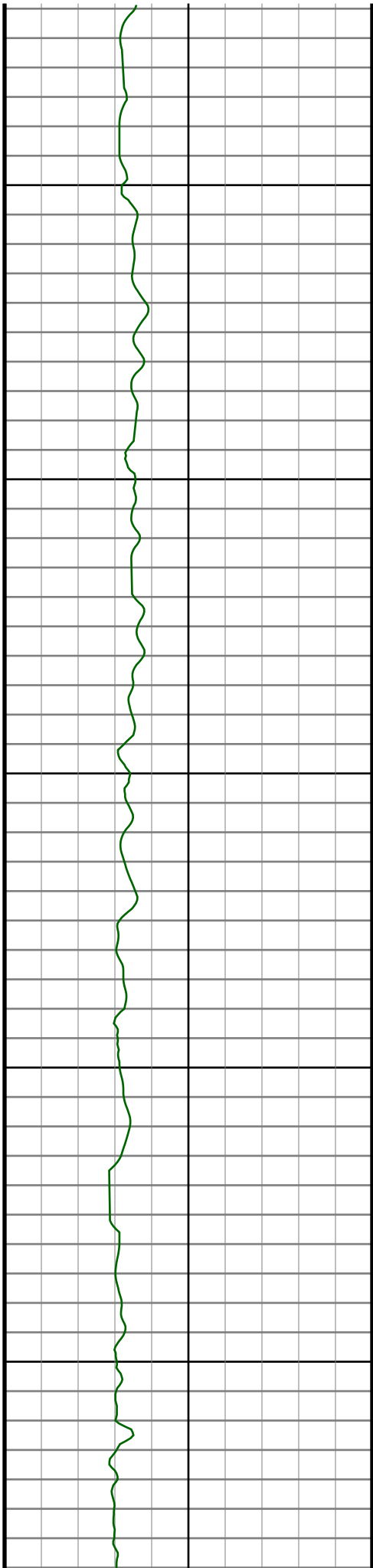












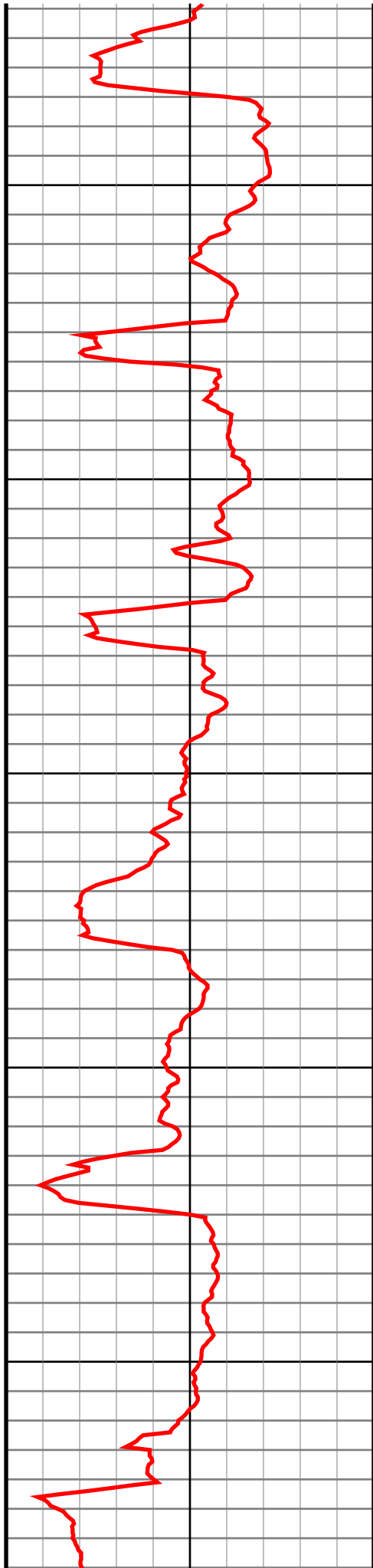
6000

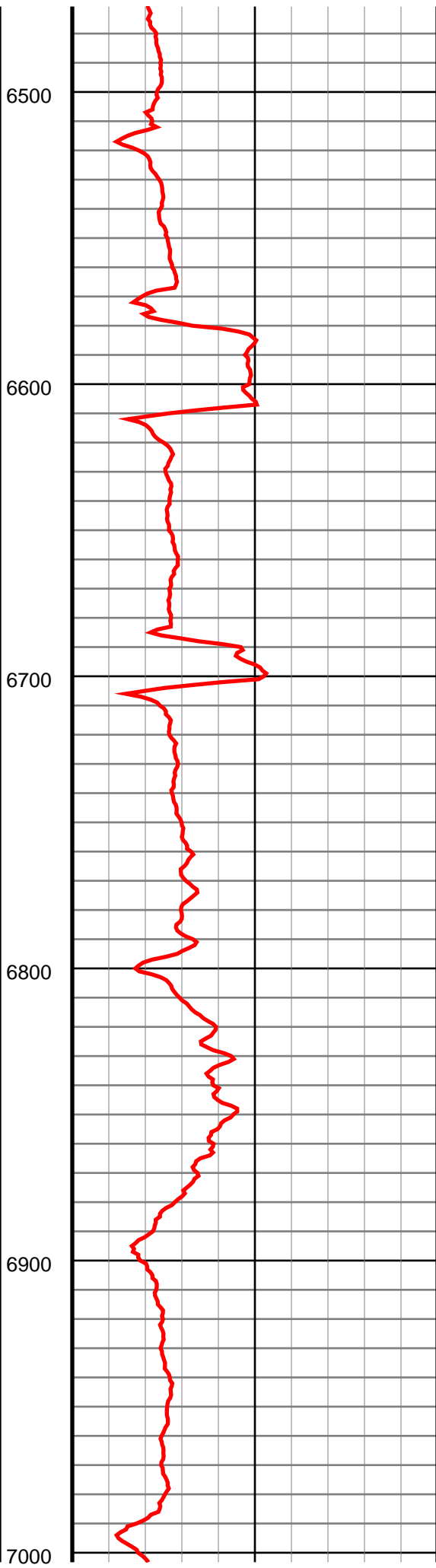
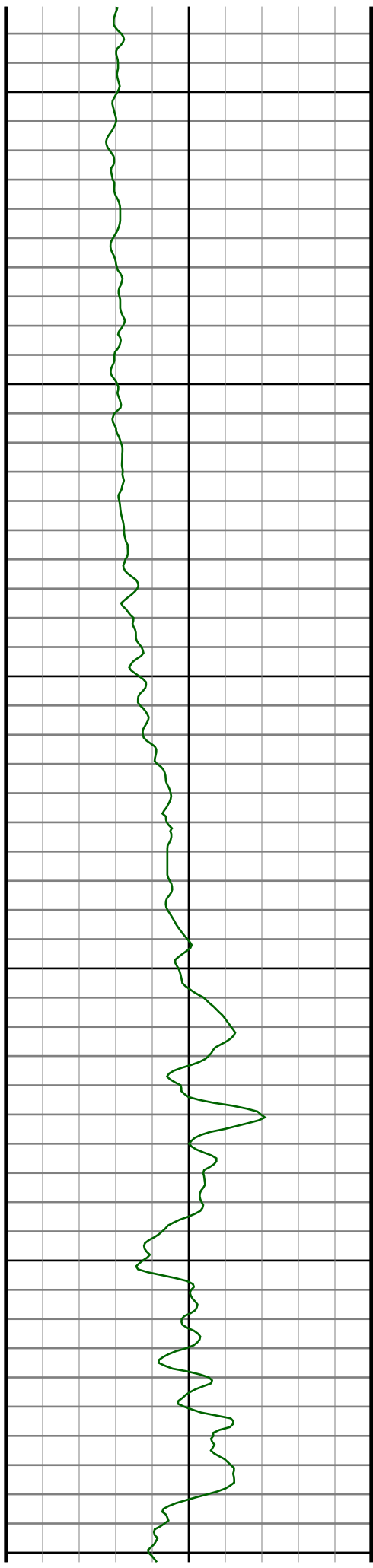
6100

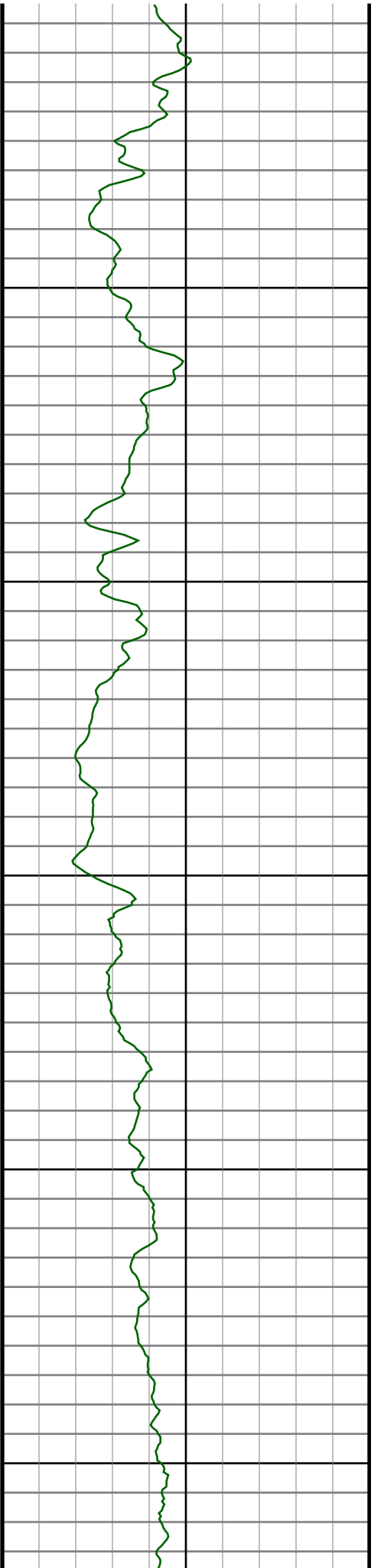
6200

6300

6400







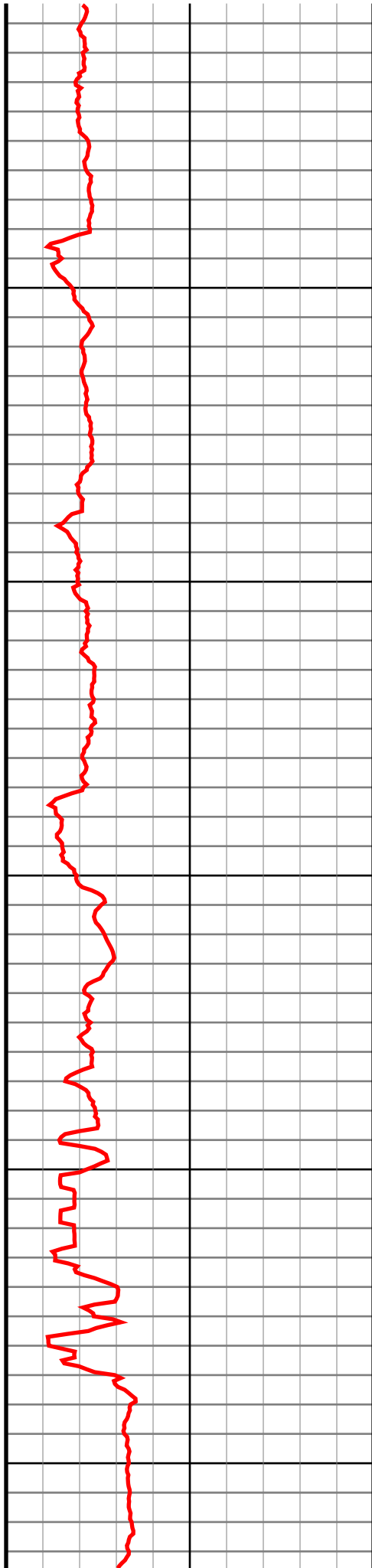
7100

7200

7300

7400

7500



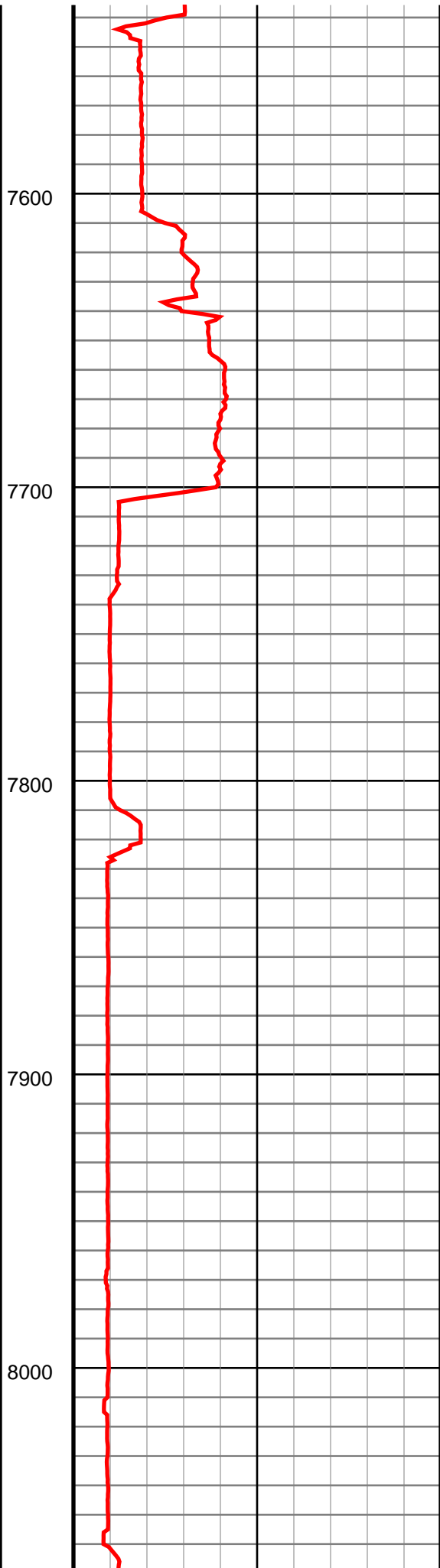
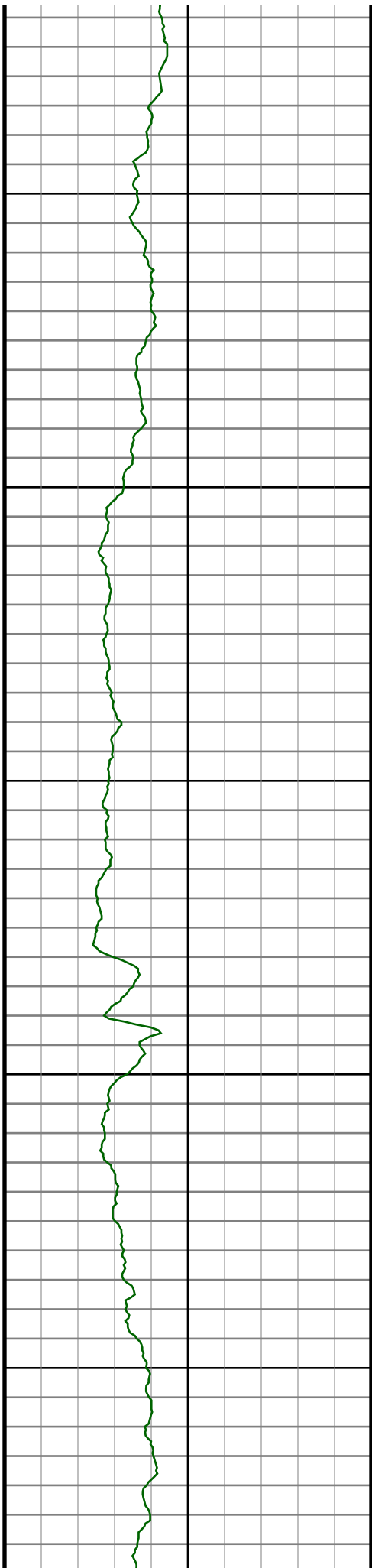
7100

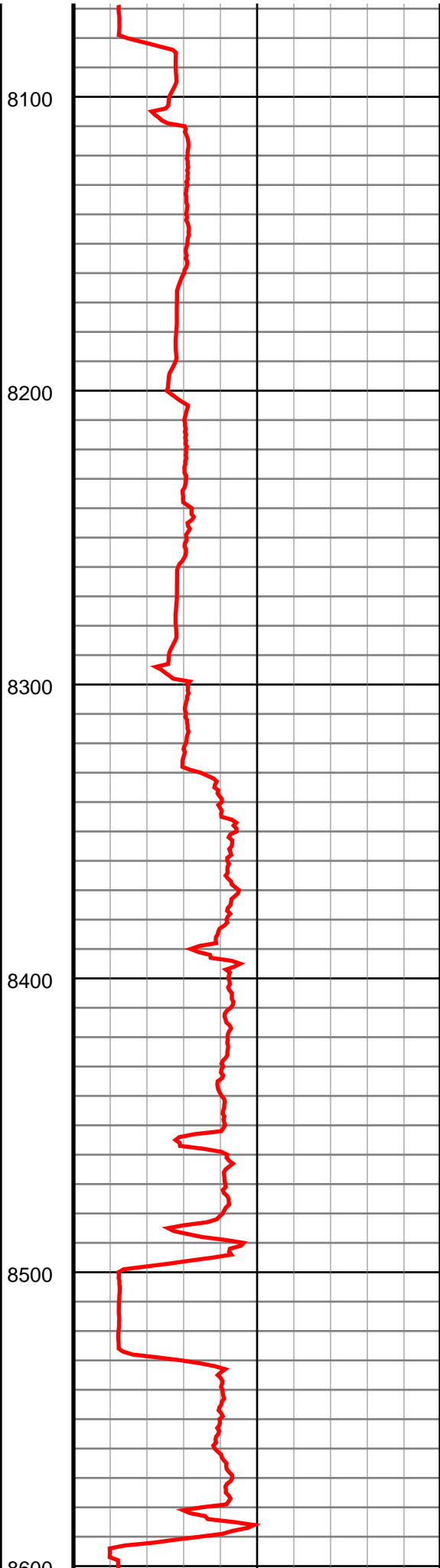
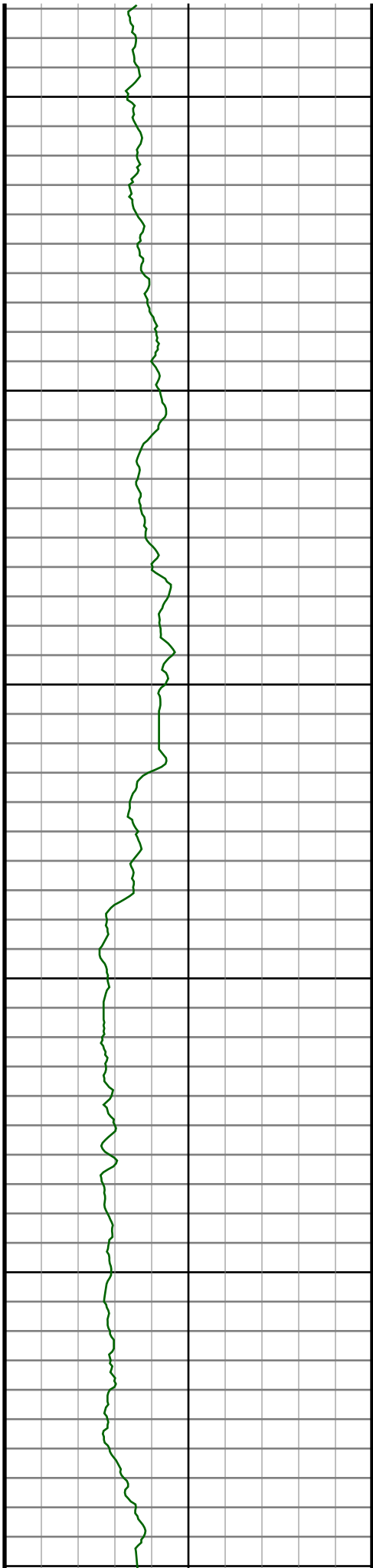
7200

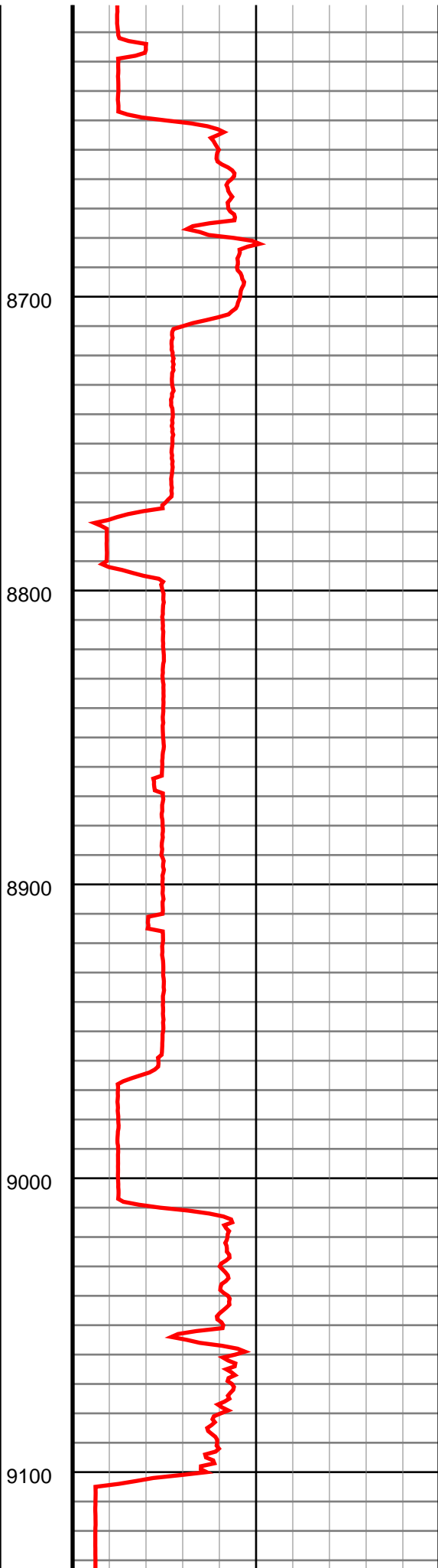
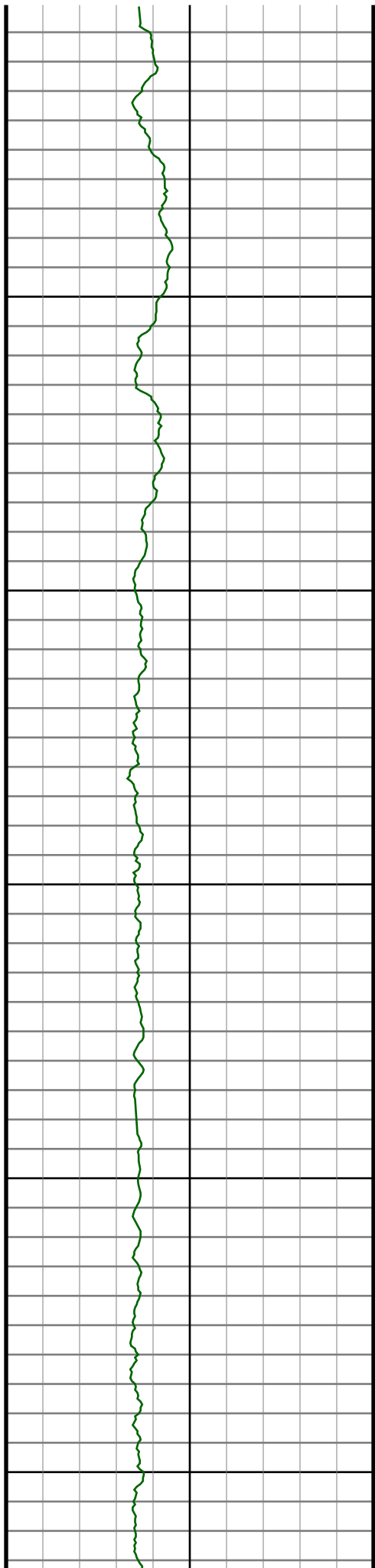
7300

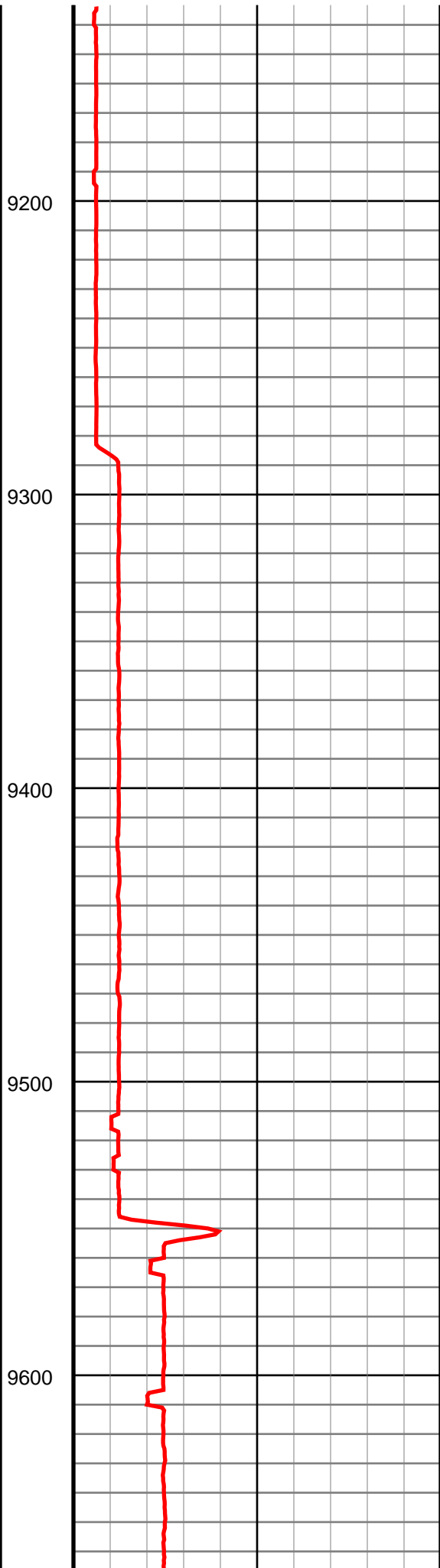
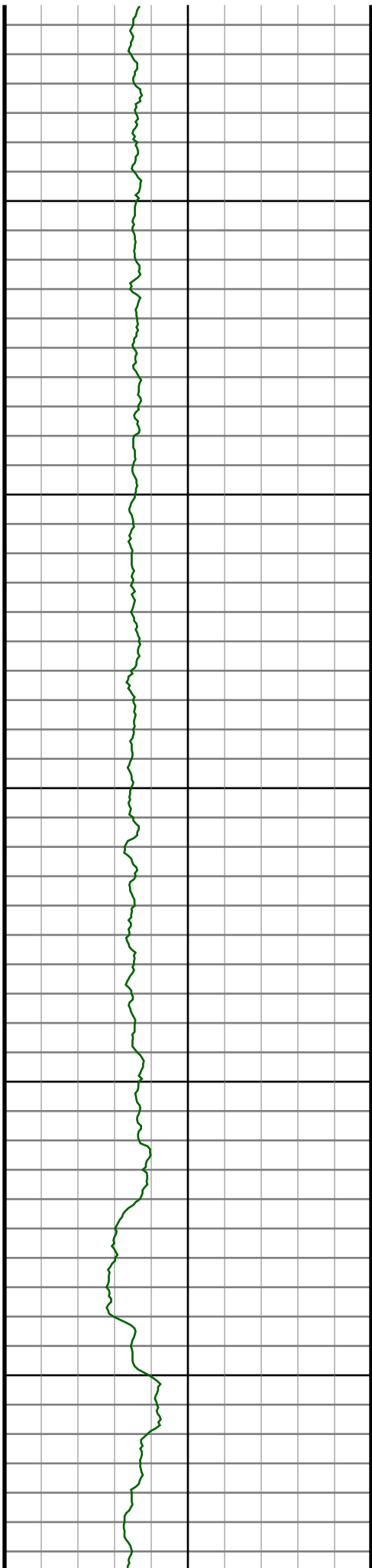
7400

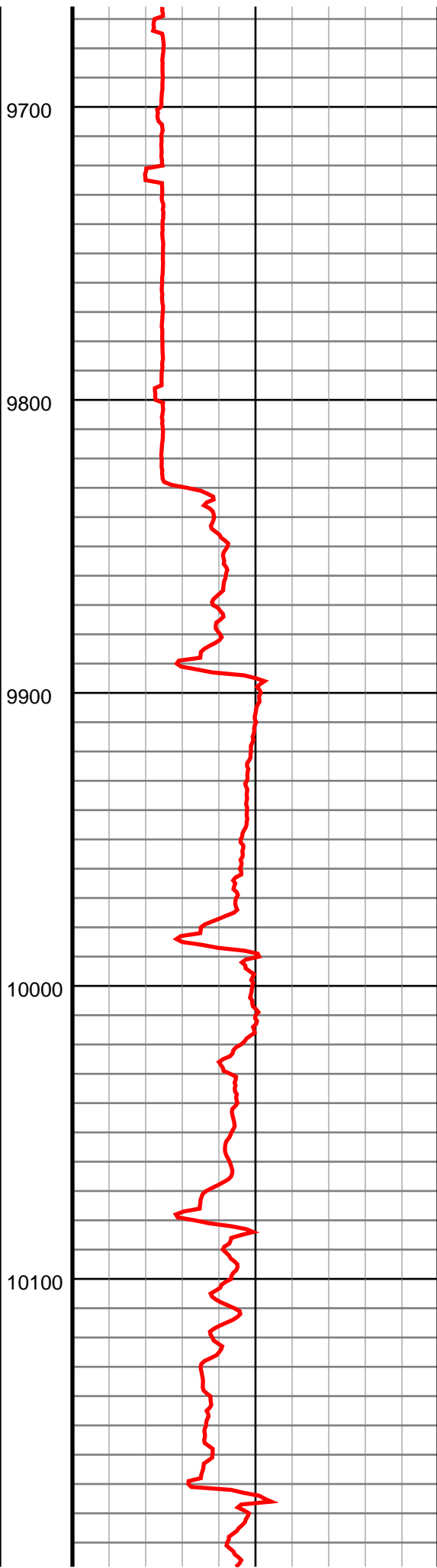
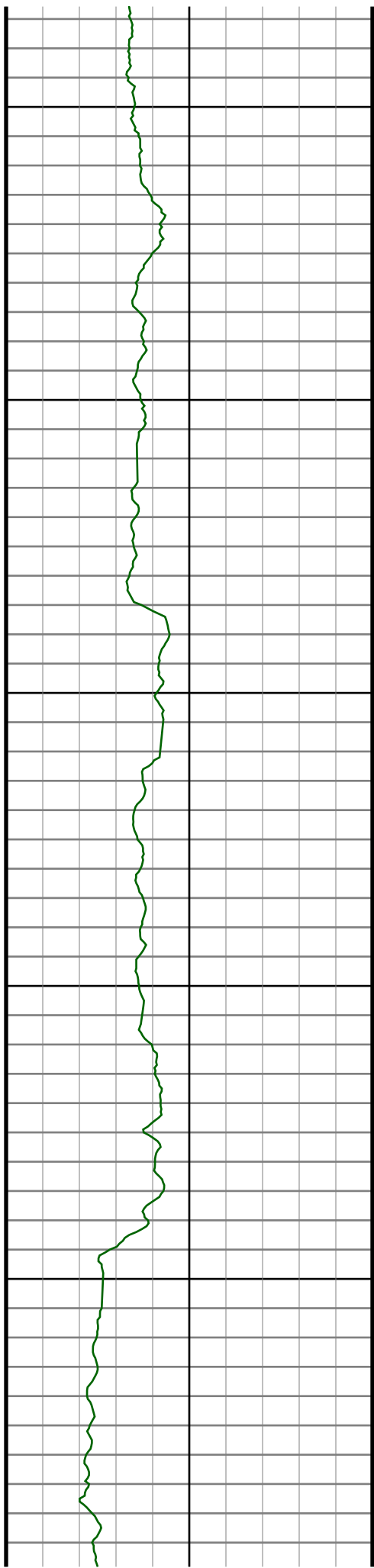
7500

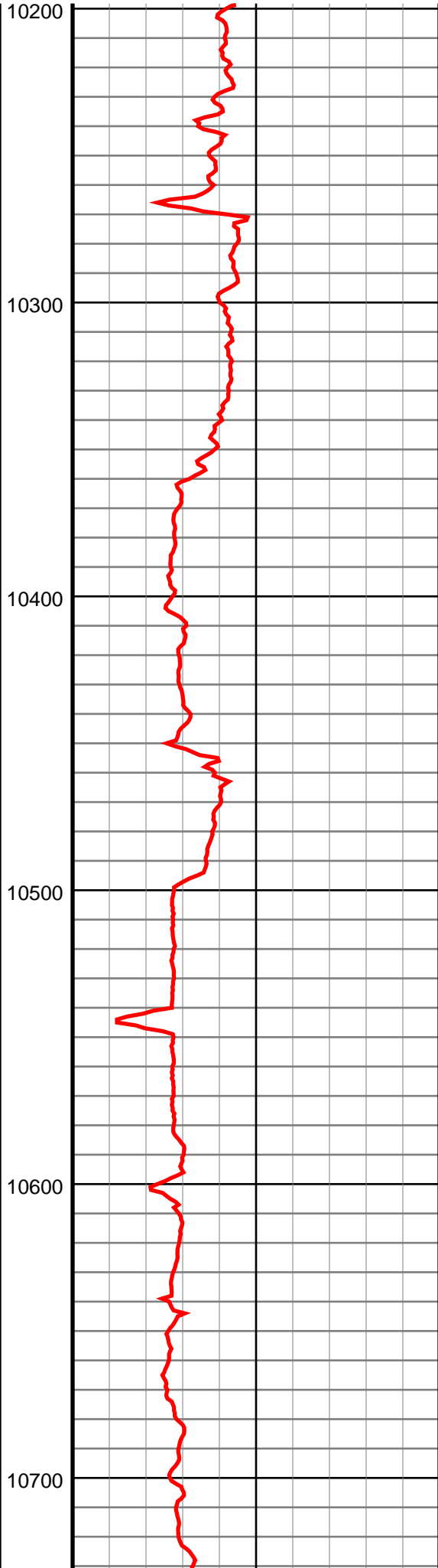
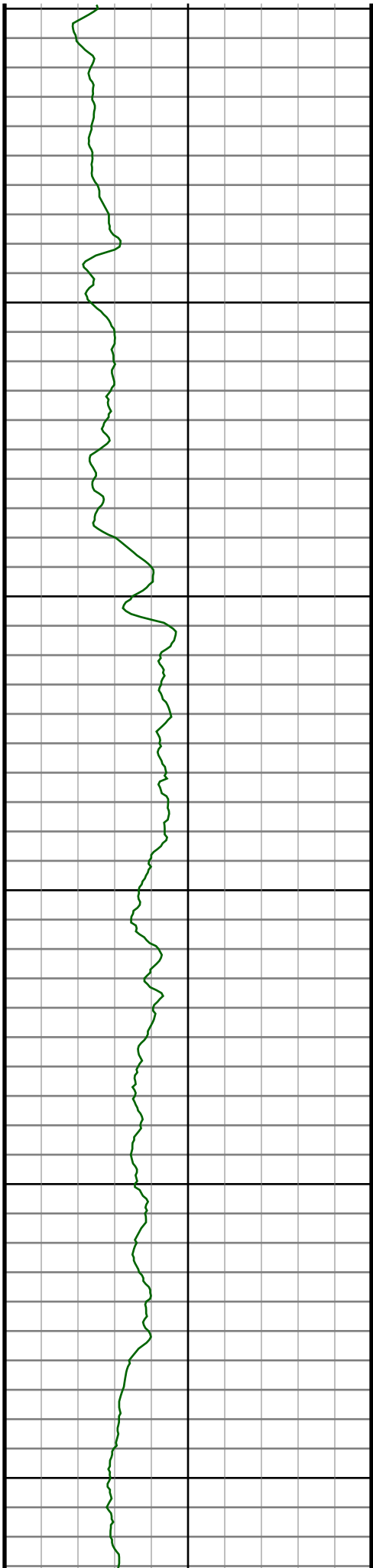


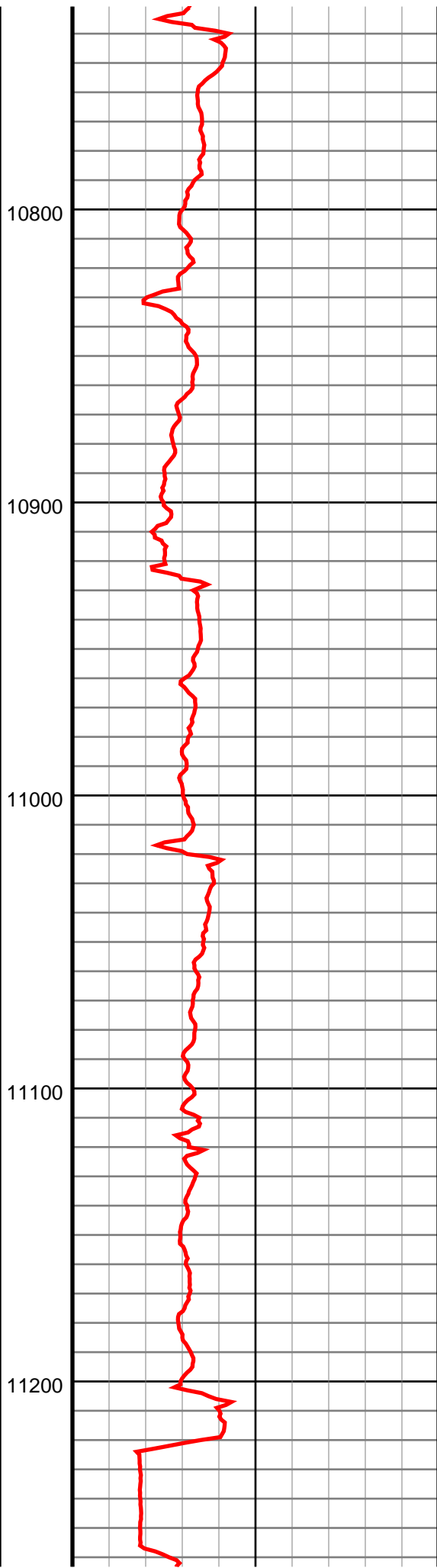
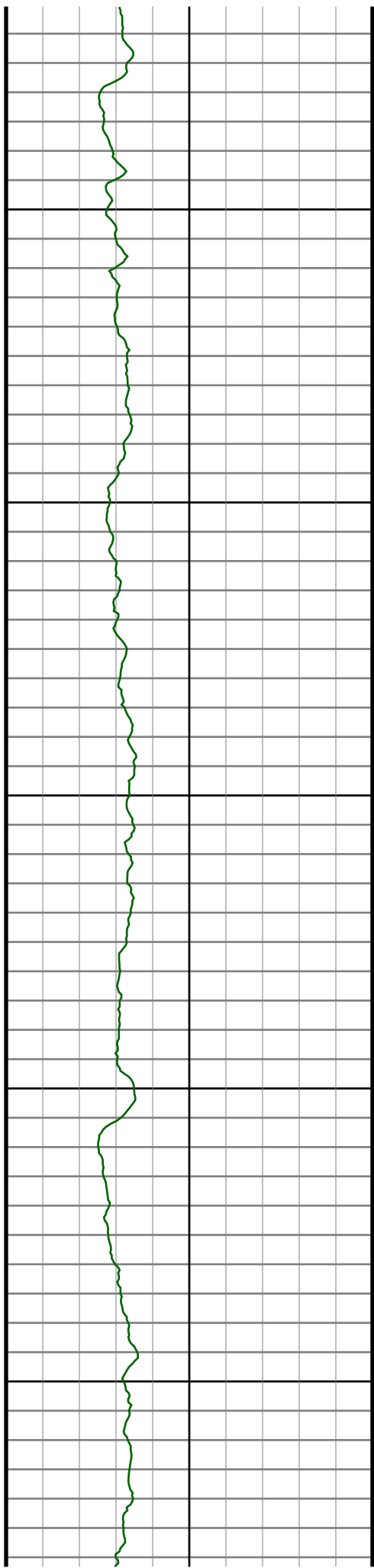


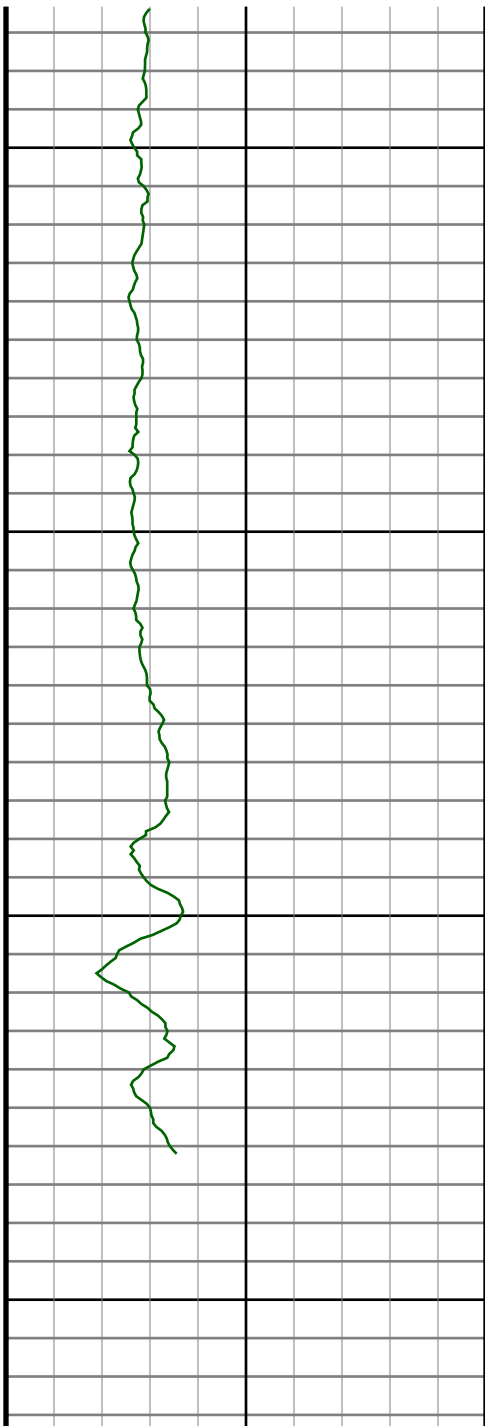












11300

11400

11500

11600

