

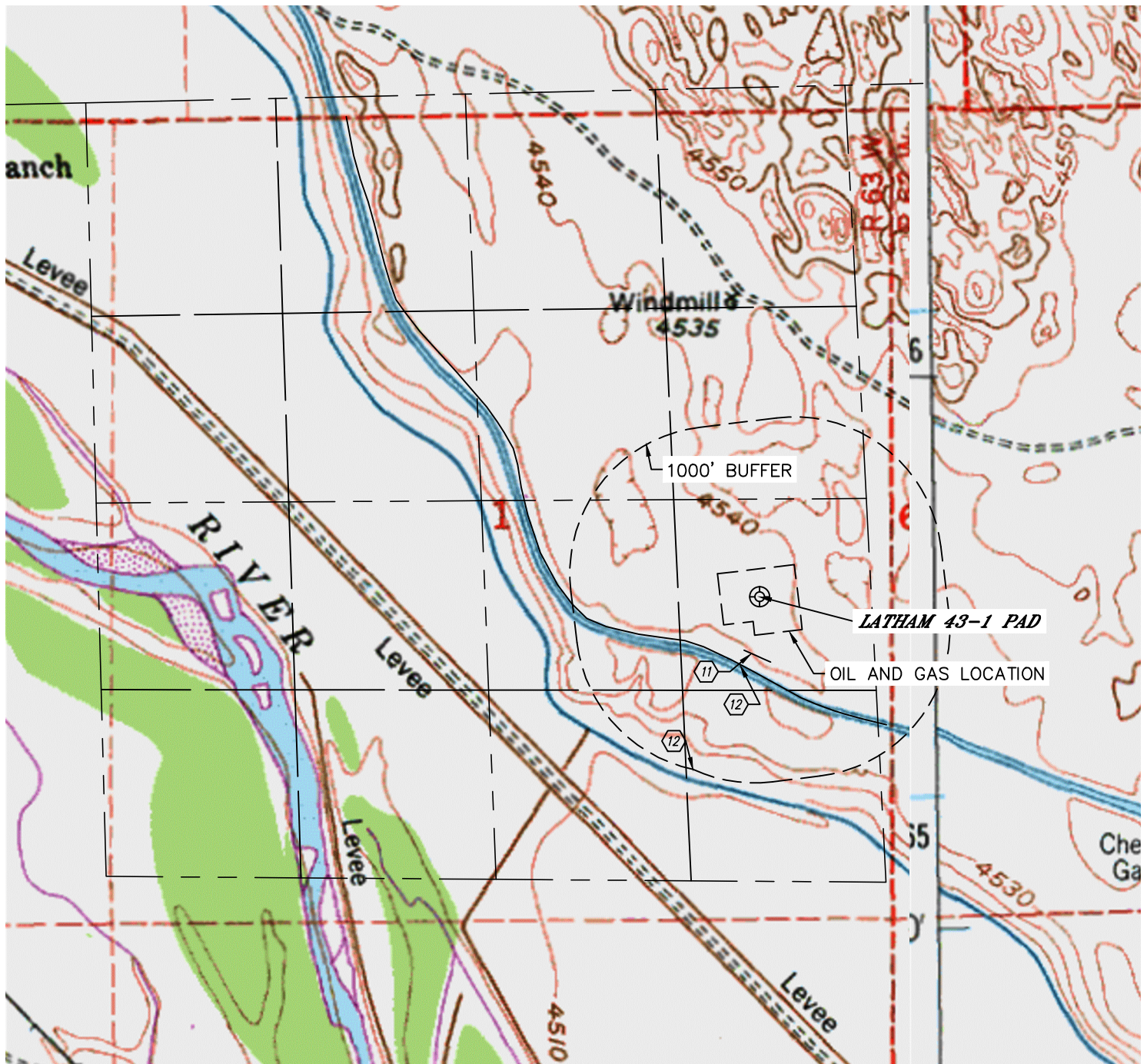


Lat40°, Inc. 6250 W. 10th Street, Unit 2, Greeley, CO 970-515-5294

HYDROLOGY MAP

LATHAM 43-1 PAD

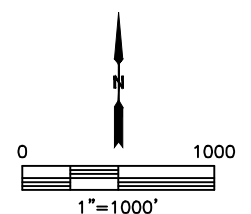
SECTION: 1
TOWNSHIP: 4N
RANGE: 63W
6TH. P.M.
WELD COUNTY, CO



DISTANCES MEASURED FROM EDGE OF OIL AND GAS LOCATION.

⑪ BARROW DITCH 122' SW

⑫ CANAL 222' & 1050' SW



DATE: 10/6/2015
PROJECT#: 2015071