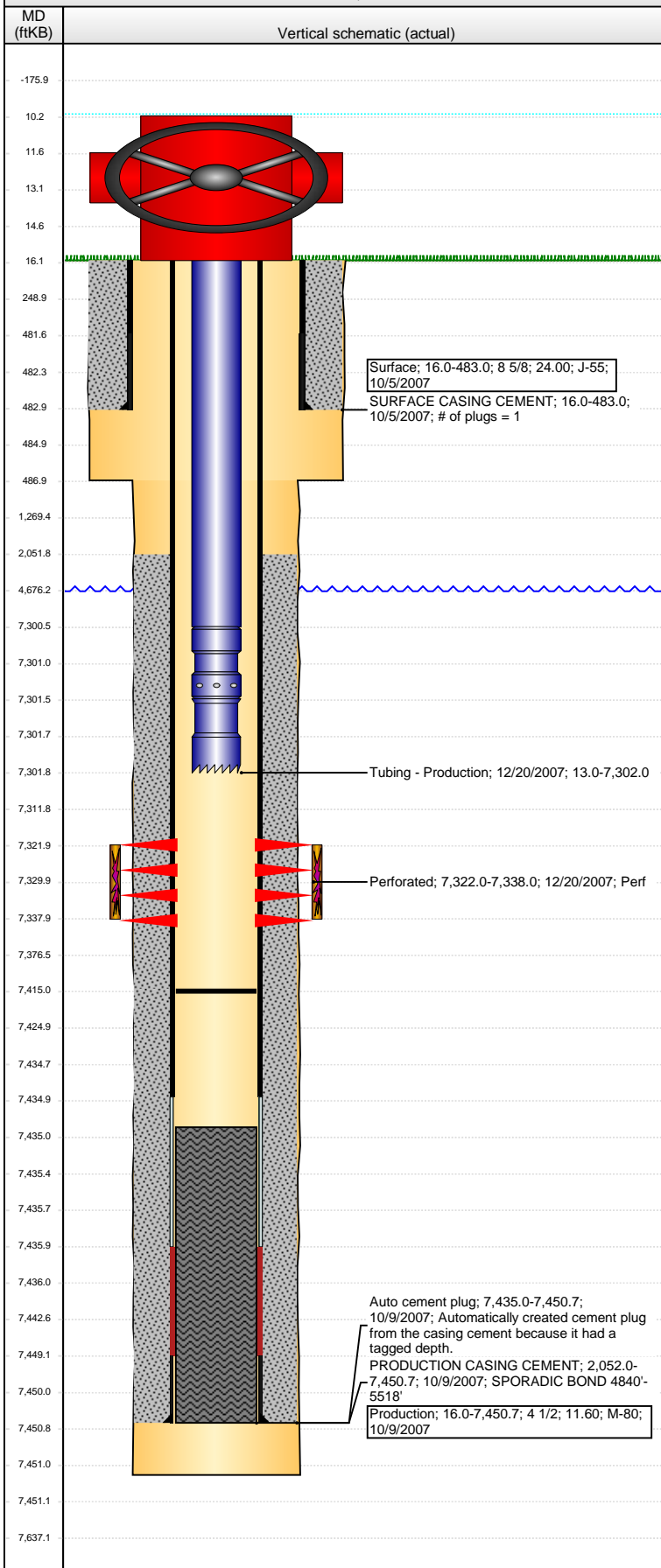


# Wellbore Schematic Input Report

**Well Name: CERVI USX CC15-09**

VERTICAL - ORIGINAL HOLE, 5/16/2016 10:57:48 AM



Well Header									
API 05-123-26005		Business Unit DJ BASIN		District 15		Well Config VERTICAL			
Original KB Elevation (ft) 4,688		KB - GL / MSL (ftKB) 16.00		Spud Date 10/4/2007		P & A Date			
Comment WELL WAS DRILLED/FRAC'D IN '07-'08 THEN SI - WAITED ON PIPELINE UNTIL 2011.									
Directions To Well FROM WCR 69 & HWY 34, NORTHWEST 1/2 MILE, SOUTH 1.5 MILES, WEST 3/8 MILE, SOUTH 1.25 MILES, EAST 1 MILE, NORTH 1.25 MILES, WEST 1/8 MILE TO LOCATION.									
Congressional Location									
Quarter 1	Quarter 2	Quarter 3 NE	Quarter 4 SE	Section 15	Township 4 N	Twship N...	Range 63	Rng E/W Dir W	
Bottom Hole Location									
North-South Distance (ft)		From N or S Line		East-West Distance (ft)			From E or W Line		
Plug Back Total Depths									
Date	Depth (ftKB)	Method			Com				
10/9/2007	7,435.0	CASING TALLY			FLOAT COLLAR				
10/26/2007	7,399.0	CASED HOLE LOG			DEPTH LOGGER ON CBL				
12/19/2007	7,415.0	TAG			TAGGED FILL				
Wellbore Sections									
Section Des			Size (in)		Act Top, MD (ftKB)		Act Btm, MD (ftKB)		
SURFACE			12 1/4		16.0		487.0		
PRODUCTION			7 7/8		487.0		7,451.0		
Zone Statuses									
Zone Name	Status Date	Status	Fluid Type		Job	Prod Method			
DAKOTA	1/14/2008	SI			DRILLING/CO...				
DAKOTA	1/13/2011	PR			DRILLING/CO...				
Casing Strings									
Surface, 483.0ftKB									
Casing Description		Run Date	OD (in)	Wt/Len (l...	Grade	Top, MD (ft...	MD (ftKB)		
Surface		10/5/2007	8 5/8	24.00	J-55	16.0	483.0		
Production, 7,450.7ftKB									
Casing Description		Run Date	OD (in)	Wt/Len (l...	Grade	Top, MD (ft...	MD (ftKB)		
Production		10/9/2007	4 1/2	11.60	M-80	16.0	7,450.7		
Cement									
Description					Top Depth (ftKB)		Bottom Depth (ftKB)		
SURFACE CASING CEMENT					16.0		483.0		
Description					Top Depth (ftKB)		Bottom Depth (ftKB)		
PRODUCTION CASING CEMENT					2,052.0		7,450.7		
Tubing Strings									
Tubing Description		Run Date	String...	ID (in)	Wt (lb/ft)	Grade	Len (ft)	Set De...	
Tubing - Production		12/20/2007	2 3/8	1.995	4.70	J-55	7,289.00		
Tubing Components									
Item Des		OD (in)	Wt (lb/ft)	Grade	Jts	Len (ft)	Btm (ftKB)	Btm (TVD) (ftKB)	
Tubing		2 3/8	4.70	J-55	237	7,287.50	7,300.5		
Pump Seating		2 3/8				1.00	7,301.5		
Nipple									
Notched collar		2 3/8				0.50	7,302.0		
Perforation Data									
Zone		Bnch/St g	Entered Shot Total	Top (ftKB)		Btm (ftKB)		Date	
DAKOTA, ORIGINAL HOLE			64	7,322.00		7,338.00		12/20/2007	
Stimulations & Treatments									
Date	Zone			Primary Job Type					
1/14/2008	DAKOTA, ORIGINAL HOLE			DRILLING/COMPLETION - ORIGINAL					
Technical Result Success			Tech Result Details According to Plan			Tech Result Note			
Comment DAKOTA FRAC WENT WELL. NO ISSUES WITH EQUIPMENT OR FLUID. AVG NOLTE = +0.19.									
Other In Hole									
Run Date		Des			OD (in)	Top (ftKB)		Btm (ftKB)	

**Well Name: CERV USX CC15-09**

VERTICAL - ORIGINAL HOLE, 5/16/2016 10:57:53 AM

## Logs

