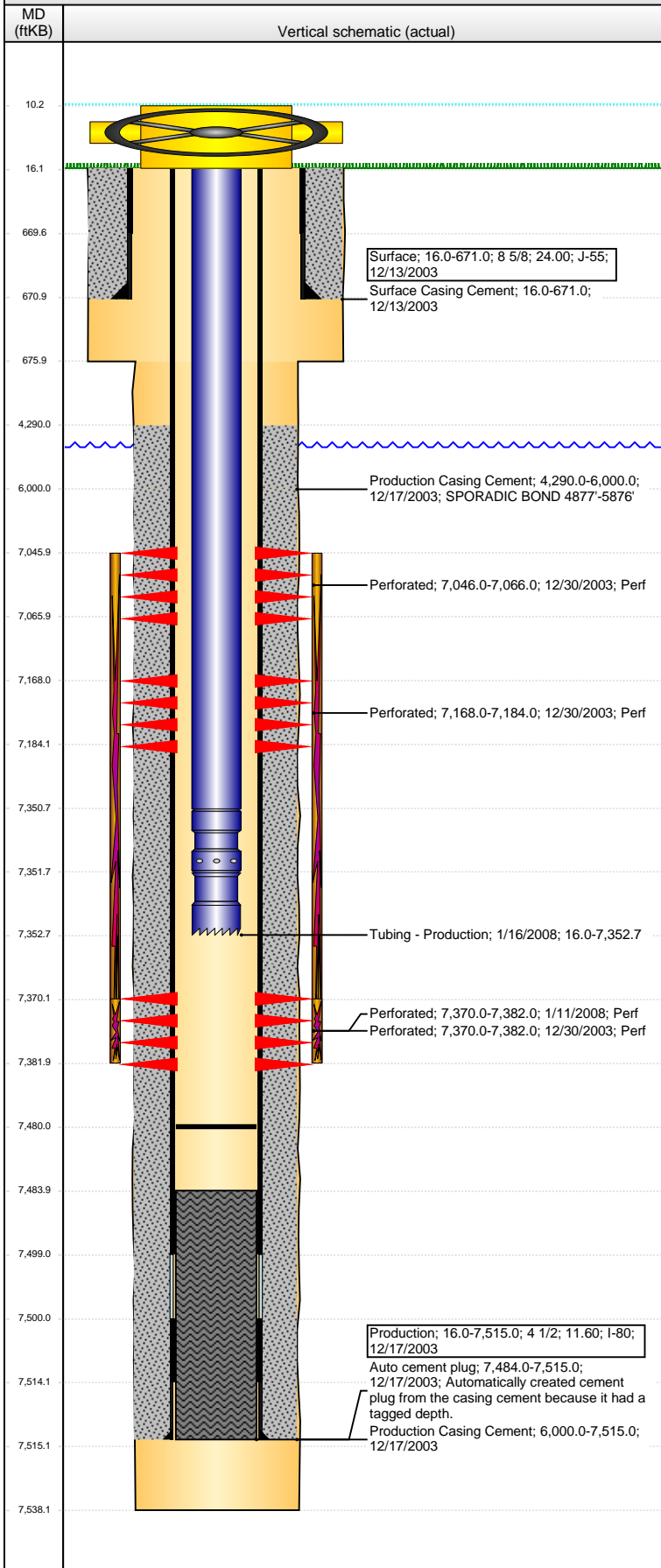


**Well Name: BERNHARDT STATE 10-36**

VERTICAL - ORIGINAL HOLE, 5/16/2016 9:13:59 AM



## Well Header

API	Business Unit	District	Well Config
05-123-21822	DJ BASIN	15	VERTICAL
Original KB Elevation (ft)	KB - GL / MSL (ftKB)	Spud Date	P & A Date
4,893	16.00	12/13/2003	
Comment			

## Directions To Well

HWY 60 & WCR 23 1/2, N 1 MILE, WEST INTO

## Congressional Location

Quarter 1	Quarter 2	Quarter 3	Quarter 4	Section	Township	Twnshp N...	Range	Rng E/W Dir
		NW	SE	36	5	N	67	W

## Bottom Hole Location

North-South Distance (ft)	From N or S Line	East-West Distance (ft)	From E or W Line

## Plug Back Total Depths

Date	Depth (ftKB)	Method	Com
12/17/2003	7,499.0	CASING TALLY	TOP OF FLOAT COLLAR
12/30/2003	7,484.0	CASED HOLE LOG	DEPTH LOGGER ON CBL
1/8/2004	7,480.0	TAG	CLEAN OUT

## Wellbore Sections

Section Des	Size (in)	Act Top, MD (ftKB)	Act Btm, MD (ftKB)
SURFACE	12 1/4	16.0	676.0
PRODUCTION	7 7/8	676.0	7,538.0

## Zone Statuses

Zone Name	Status Date	Status	Fluid Type	Job	Prod Method
NIOBRARA	2/4/2004	PR		DRILLING/CO...	
CODELL	2/4/2004	PR		DRILLING/CO...	
CODELL	1/24/2008	PR		RE-FRAC, 12/1...	

## Casing Strings

### Surface, 671.0ftKB

Casing Description	Run Date	OD (in)	Wt/Len (l...	Grade	Top, MD (ft...	MD (ftKB)
Surface	12/13/2003	8 5/8	24.00	J-55	16.0	671.0

### Production, 7,515.0ftKB

Casing Description	Run Date	OD (in)	Wt/Len (l...	Grade	Top, MD (ft...	MD (ftKB)
Production	12/17/2003	4 1/2	11.60	I-80	16.0	7,515.0

## Cement

Description	Top Depth (ftKB)	Bottom Depth (ftKB)
Surface Casing Cement	16.0	671.0
Description	Top Depth (ftKB)	Bottom Depth (ftKB)
Production Casing Cement	4,290.0	6,000.0
Description	Top Depth (ftKB)	Bottom Depth (ftKB)
Production Casing Cement	6,000.0	7,515.0

## Tubing Strings

Tubing Description	Run Date	String...	ID (in)	Wt (lb/ft)	Grade	Len (ft)	Set De...
PRODUCTION TUBING	1/8/2004	2 3/8				7,331.00	
Tubing Description	Run Date	String...	ID (in)	Wt (lb/ft)	Grade	Len (ft)	Set De...
Tubing - Production	1/16/2008	2 3/8	1.995	4.70	J-55	7,336.72	

## Tubing Components

Item Des	OD (in)	Wt (lb/ft)	Grade	Jts	Len (ft)	Btm (ftKB)	Btm (TVD) (ftKB)
Tubing	2 3/8	4.70	J-55	237	7,334.72	7,350.7	
Seal Nipple	2 3/8			1	1.00	7,351.7	
Notched collar	2 3/8			1	1.00	7,352.7	

## Perforation Data

Zone	Bnch/St g	Entered Shot Total	Top (ftKB)	Btm (ftKB)	Date
NIOBRARA, ORIGINAL HOLE	A	10	7,046.00	7,066.00	12/30/2003
NIOBRARA, ORIGINAL HOLE	B	8	7,168.00	7,184.00	12/30/2003
CODELL, ORIGINAL HOLE		24	7,370.00	7,382.00	12/30/2003
CODELL, ORIGINAL HOLE		48	7,370.00	7,382.00	1/11/2008

## Stimulations & Treatments

Date	Zone	Primary Job Type
1/6/2004	NIOBRARA-CODELL, ORIGINAL HOLE	DRILLING/COMPLETION - ORIGINAL
Technical Result	Tech Result Details	Tech Result Note

## Comment

LIMITED ENTRY FRAC

**Well Name: BERNHARDT STATE 10-36**

VERTICAL - ORIGINAL HOLE, 5/16/2016 9:14:01 AM

## Stimulations & Treatments

Date 1/14/2008	Zone CODELL, ORIGINAL HOLE	Primary Job Type RE-FRAC
Technical Result	Tech Result Details	Tech Result Note
Comment		

## Other In Hole

Run Date	Des	OD (in)	Top (ftKB)	Btm (ftKB)

## Logs

Date	Type	Top, MD (ftKB)	Btm, MD (ftKB)
12/17/2003	COMPENSATED NEUTRON	4,100.0	7,512.0
12/17/2003	INDUCTION	671.0	7,522.0
12/20/2003	CBL/CCL/GR	5,500.0	7,478.0
1/11/2008	COLLAR LOCATOR	7,200.0	7,400.0

