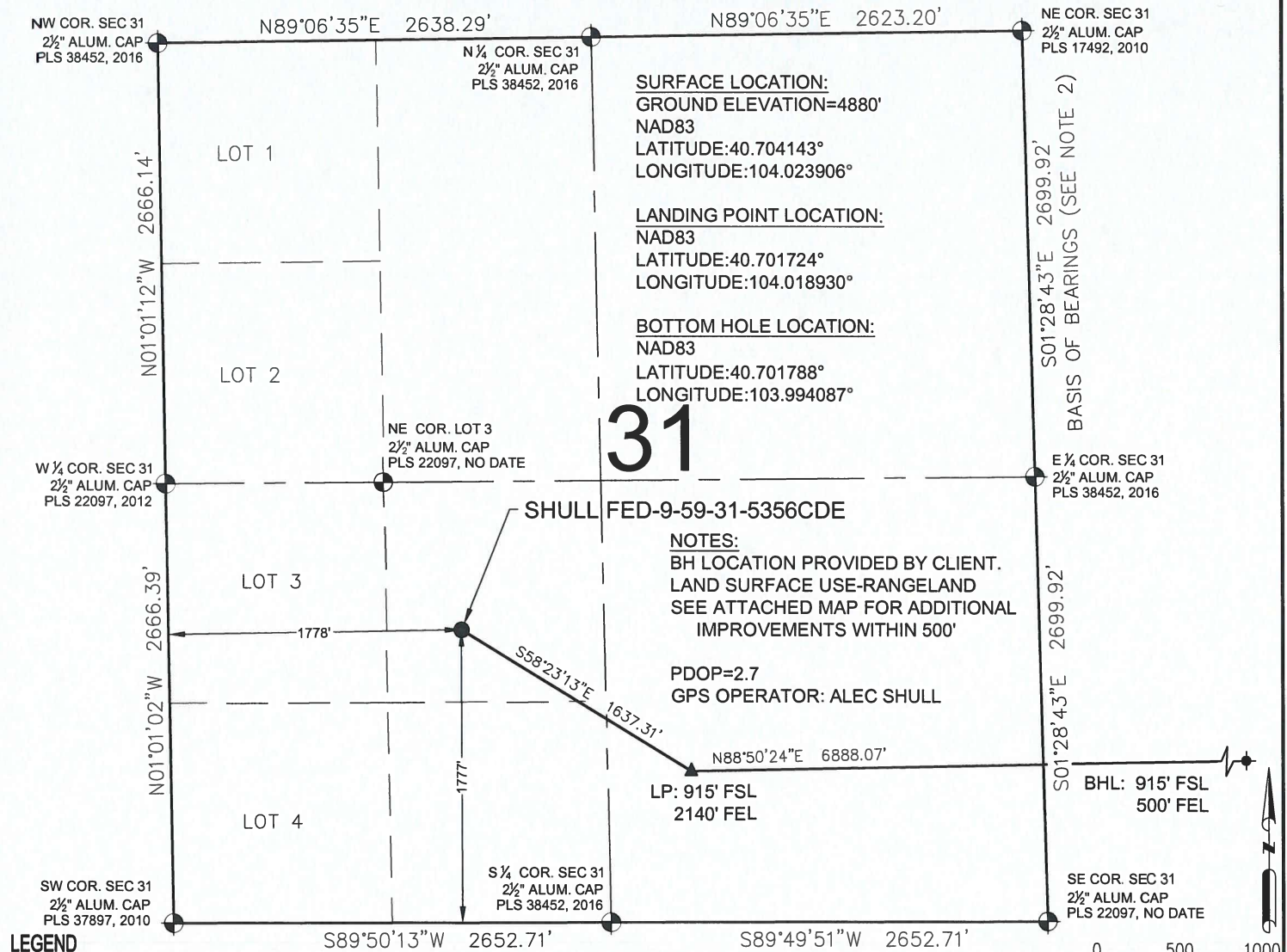


# SHULL FED-9-59-31-5356CDE WELL LOCATION CERTIFICATE



**LEGEND**

- = EXISTING MONUMENT
- = CALCULATED POSITION
- = PROPOSED WELL
- ◆ = EXISTING WELL
- ◆ = BOTTOM HOLE
- ▲ = LANDING POINT
- LP = LANDING POINT
- BHL = BOTTOM HOLE LOCATION

- NOTES:**
- THIS FIELD SURVEY CONFORMS TO THE MINIMUM STANDARDS SET BY THE C.O.G.C.C., RULE NO. 215
  - BEARINGS ARE BASED ON THE ASSUMPTION THAT THE EAST LINE OF THE NORTHEAST QUARTER OF SECTION 31, BEARS S01°28'43"E BETWEEN THE MONUMENTS SHOWN HEREON.
  - GRID DISTANCES ARE SHOWN, AS GPS MEASURED IN THE FIELD, WITH TIES TO WELLS MEASURED PERPENDICULAR TO SECTION LINES. TO GET GROUND DISTANCES MULTIPLY THE SHOWN DISTANCE BY 1.000240741.
  - ELEVATIONS SHOWN ARE NAVD 88, AS DERIVED BY GPS OBSERVATIONS.
  - FIELD VERIFICATION OF MONUMENTS COMPLETED WITHIN 1 YEAR OF SIGNATURE DATE.

**NOTICE:** ACCORDING TO COLORADO LAW YOU MUST COMMENCE ANY LEGAL ACTION BASED UPON ANY DEFECT IN THIS SURVEY WITHIN THREE YEARS AFTER YOU FIRST DISCOVER SUCH DEFECT. IN NO EVENT MAY ANY ACTION BASED UPON ANY DEFECT IN THIS SURVEY BE COMMENCED MORE THAN TEN YEARS FROM THIS SAID DATE OF THIS CERTIFICATION SHOWN HEREON.

**WELL SHULL FED-9-59-31-5356CDE TO  
BE LOCATED 1777' FSL & 1778' FWL**

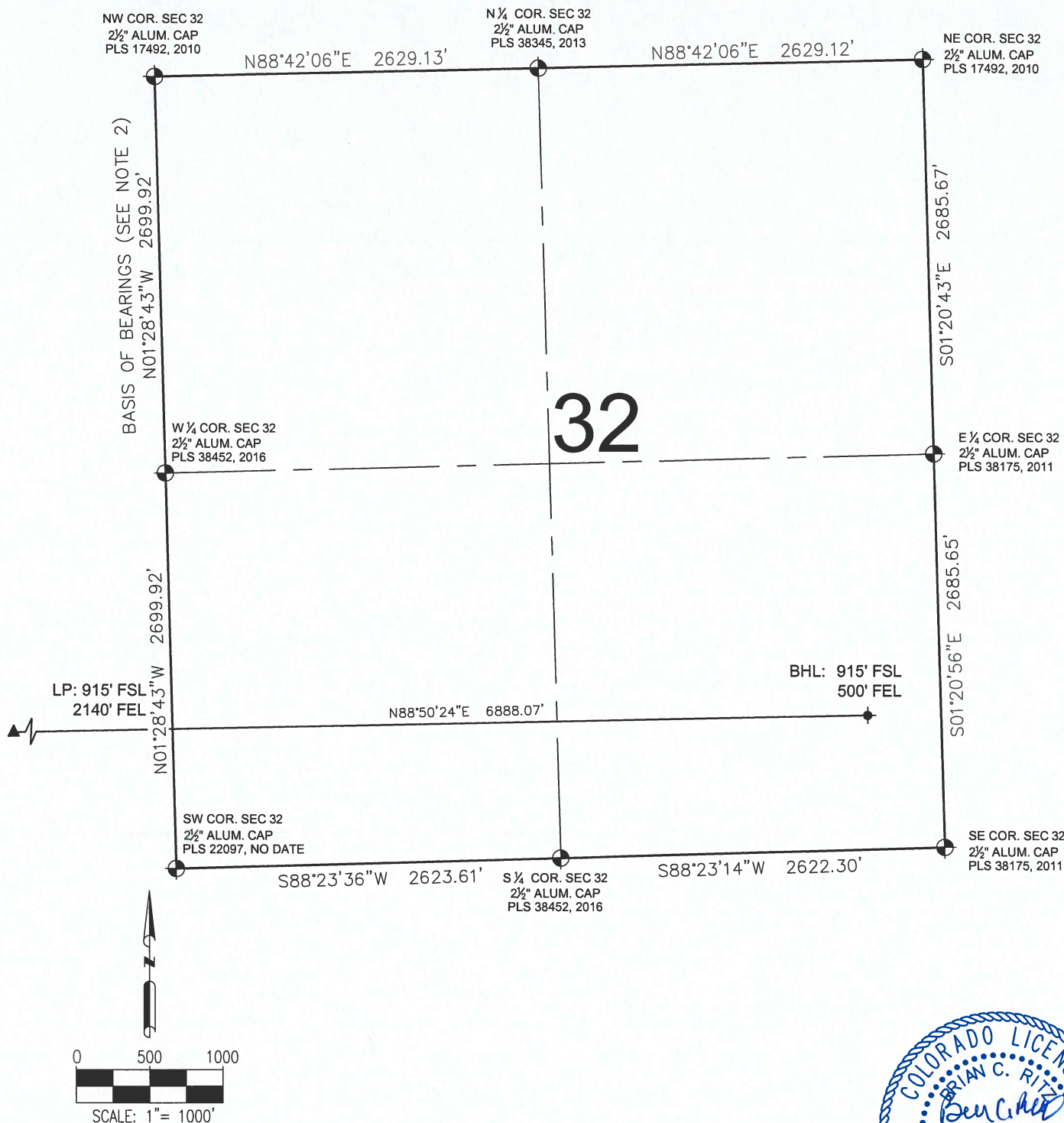
I, BRIAN C. RITZ, A LICENSED PROFESSIONAL LAND SURVEYOR IN THE STATE OF COLORADO DO HEREBY CERTIFY TO CRESCENT POINT ENERGY, THAT THE SURVEY AND WELL LOCATION CERTIFICATE SHOWN HEREON WERE DONE BY ME OR UNDER MY DIRECT SUPERVISION AND THAT THE DRAWING SHOWN HEREON ACCURATELY DEPICTS THE PROPOSED LOCATION OF THE WELL. THIS CERTIFICATE DOES NOT REPRESENT A LAND SURVEY PLAT OR IMPROVEMENT SURVEY PLAT AS DEFINED BY C.R.S. 38-51-102 AND CANNOT BE RELIED UPON TO DETERMINE OWNERSHIP.

**BRIAN C. RITZ, PLS 38452**  
**COLORADO LICENSED PROFESSIONAL LAND SURVEYOR**  
**FOR AND ON BEHALF OF P.F.S., LLC**



<b>PREPARED BY:</b>  <b>PFS</b> Petroleum Field Services, LLC 7535 Hilltop Circle Denver, CO 80221	<b>FIELD DATE:</b> 02-24-16	<b>WELL NAME:</b> SHULL FED-9-59-31-5356CDE	<b>PREPARED FOR:</b>  <b>Crescent Point</b> ENERGY CORP
	<b>DRAWING DATE:</b> 04-13-16	<b>SURFACE LOCATION:</b> NE1/4 SW1/4 SEC. 31, T9N, R59W, 6TH P.M.	
	<b>BY:</b> KAD	<b>CHECKED BY:</b> MLP	

# SHULL FED-9-59-31-5356CDE WELL LOCATION CERTIFICATE



## LEGEND

- ⊙ = EXISTING MONUMENT
- = CALCULATED POSITION
- = PROPOSED WELL
- ◆ = EXISTING WELL
- ⬮ = BOTTOM HOLE
- ▲ = LANDING POINT
- LP = LANDING POINT
- BHL = BOTTOM HOLE LOCATION

BRIAN C. RITZ, PLS 38452  
COLORADO LICENSED PROFESSIONAL LAND SURVEYOR  
FOR AND ON BEHALF OF P.F.S., LLC



SHEET 2 OF 2

PREPARED BY:



FIELD DATE:

02-24-16

DRAWING DATE:

04-13-16

BY:

KAD

CHECKED BY:

MLP

WELL NAME:

SHULL FED-9-59-31-5356CDE

SURFACE LOCATION:

NE1/4 SW1/4 SEC. 31, T9N, R59W, 6TH P.M.  
WELD COUNTY, COLORADO

PREPARED FOR:

