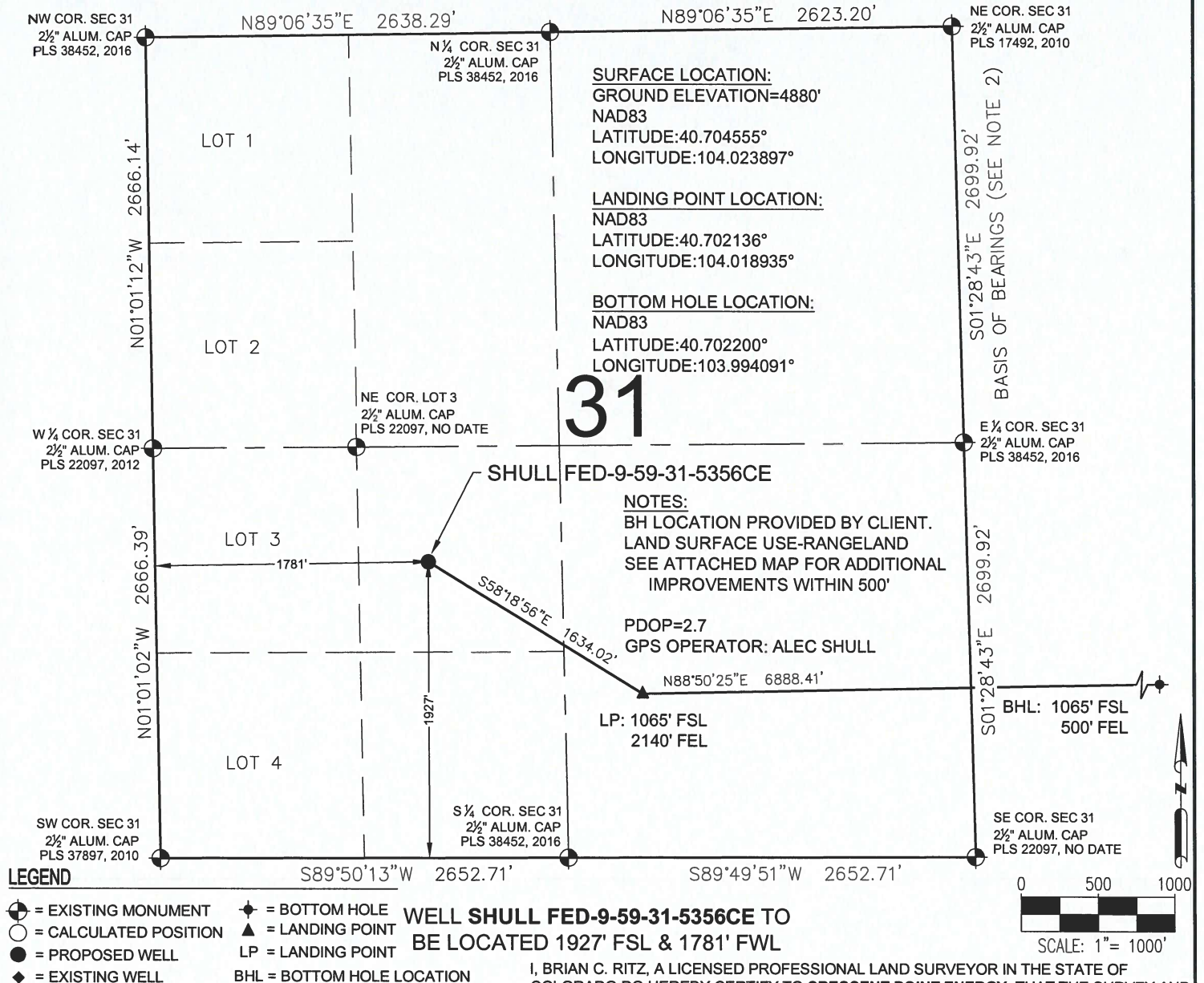




# SHULL FED-9-59-31-5356CE WELL LOCATION CERTIFICATE



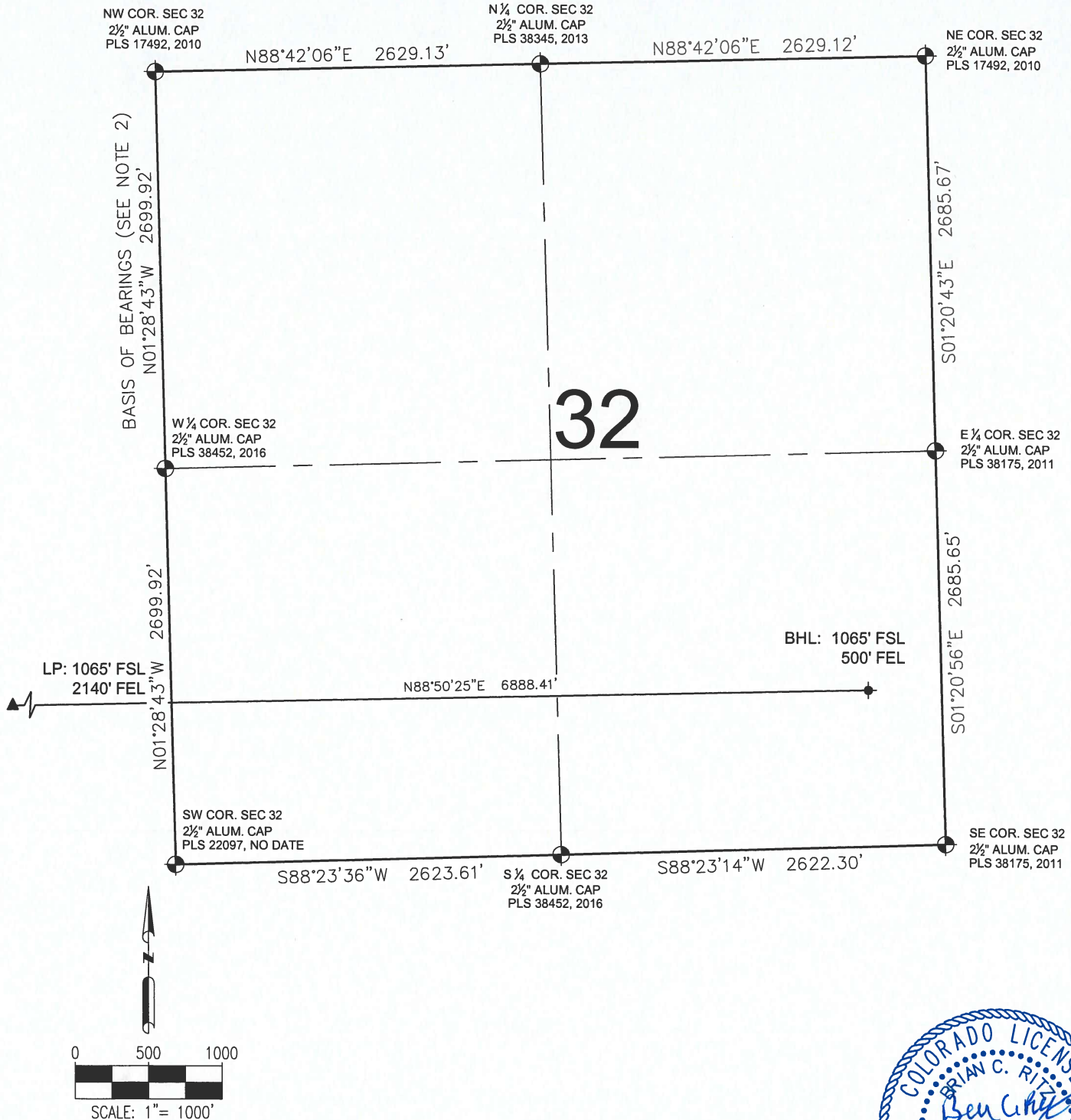
- NOTES:**
1. THIS FIELD SURVEY CONFORMS TO THE MINIMUM STANDARDS SET BY THE C.O.G.C.C., RULE NO. 215
  2. BEARINGS ARE BASED ON THE ASSUMPTION THAT THE EAST LINE OF THE NORTHEAST QUARTER OF SECTION 31, BEARS S01°28'43"E BETWEEN THE MONUMENTS SHOWN HEREON.
  3. GRID DISTANCES ARE SHOWN, AS GPS MEASURED IN THE FIELD, WITH TIES TO WELLS MEASURED PERPENDICULAR TO SECTION LINES. TO GET GROUND DISTANCES MULTIPLY THE SHOWN DISTANCE BY 1.000240741.
  4. ELEVATIONS SHOWN ARE NAVD 88, AS DERIVED BY GPS OBSERVATIONS.
  5. FIELD VERIFICATION OF MONUMENTS COMPLETED WITHIN 1 YEAR OF SIGNATURE DATE.

NOTICE: ACCORDING TO COLORADO LAW YOU MUST COMMENCE ANY LEGAL ACTION BASED UPON ANY DEFECT IN THIS SURVEY WITHIN THREE YEARS AFTER YOU FIRST DISCOVER SUCH DEFECT. IN NO EVENT MAY ANY ACTION BASED UPON ANY DEFECT IN THIS SURVEY BE COMMENCED MORE THAN TEN YEARS FROM THIS SAID DATE OF THIS CERTIFICATION SHOWN HEREON.

SHEET 1 OF 2

PREPARED BY:  <b>PFS</b> Petroleum Field Services, LLC 7535 Hilltop Circle Denver, CO 80221	FIELD DATE: 02-24-16 DRAWING DATE: 04-13-16 BY: KAD CHECKED BY: MLP	WELL NAME: SHULL FED-9-59-31-5356CE SURFACE LOCATION: NE1/4 SW1/4 SEC. 31, T9N, R59W, 6TH P.M. WELD COUNTY, COLORADO	PREPARED FOR:  <b>Crescent Point</b> ENERGY CORP
--	--	--	--

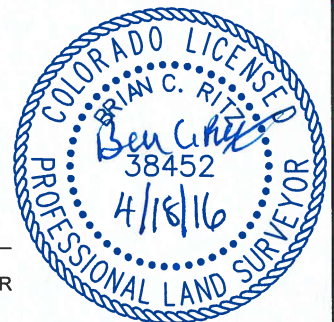
# SHULL FED-9-59-31-5356CE WELL LOCATION CERTIFICATE



## LEGEND

- ⊕ = EXISTING MONUMENT
- = CALCULATED POSITION
- = PROPOSED WELL
- ◆ = EXISTING WELL
- ⬮ = BOTTOM HOLE
- ▲ = LANDING POINT
- LP = LANDING POINT
- BHL = BOTTOM HOLE LOCATION

BRIAN C. RITZ, PLS 38452  
COLORADO LICENSED PROFESSIONAL LAND SURVEYOR  
FOR AND ON BEHALF OF P.F.S., LLC



SHEET 2 OF 2

<b>PREPARED BY:</b>  <b>PFS</b> Petroleum Field Services, LLC 7535 Hilltop Circle Denver, CO 80221	<b>FIELD DATE:</b> 02-24-16 <b>DRAWING DATE:</b> 04-13-16 <b>BY:</b> KAD <b>CHECKED BY:</b> MLP	<b>WELL NAME:</b> SHULL FED-9-59-31-5356CE <b>SURFACE LOCATION:</b> NE1/4 SW1/4 SEC. 31, T9N, R59W, 6TH P.M. WELD COUNTY, COLORADO	<b>PREPARED FOR:</b>  <b>Crescent Point</b> ENERGY CORP
---	--	--	--